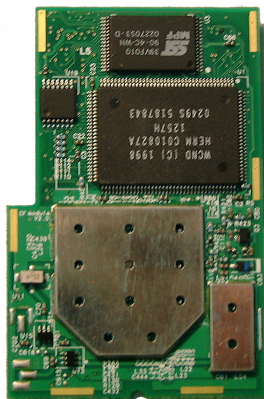




USI WLAN Card 802.11b 2.4GHz

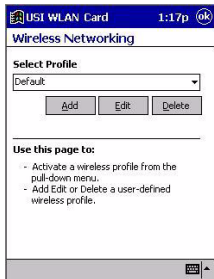
Quick Start Guide



Configure the Wireless Network

To configure the wireless network in a PocketPC environment:

1. Tap **Start** → **Settings** → **System** tab.
2. Tap the **USI WLAN Card** icon to run the Wireless Network-
ing Setting utility.
3. Select, add, or delete a profile:



- a. Select a profile from the drop-down menu, and tap **OK** to switch your station from one wireless network to another.