

Note 6T Smart phone

Quick Start Guide

1. ABOUT PHONE

Overview



- ① Earphone Jack
- ② Light Sensor
- ③ Receiver
- ④ Front Camera
- ⑤ LCD
- ⑥ Mic

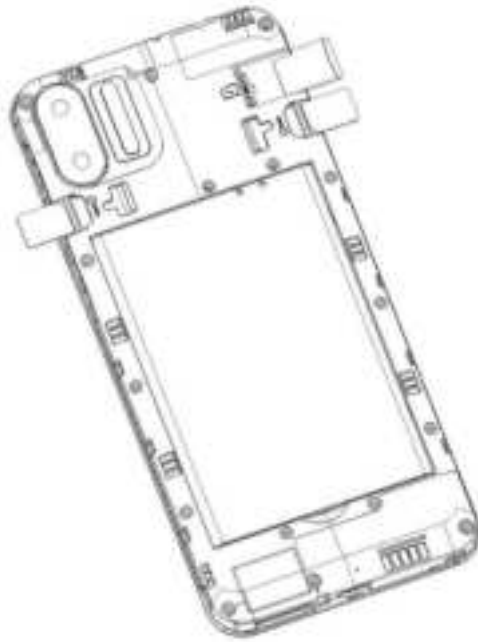
- ⑦ USB
- ⑧ Speaker
- ⑨ Volume Key
- ⑩ Power Key
- ⑪ Camera
- ⑫ Flash Light

2. BEFORE USING

The phone is a Dual SIM mobile that allows you to use two mobile networks.

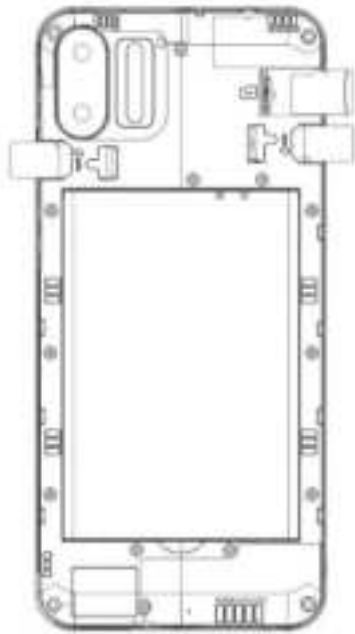
Insert SIM cards and SD card

- 1) Switch off the mobile phone, then remove the cover as shown in the figure.



- 2) Remove the battery, and install SIM and SD cards, place the cards with chip facing downwards, and then slide it into its slot. Make sure that it is correctly inserted.

Installing and removing SIM cards/ microSD card



✓ **Note:** SD card can be used as internal storage.

Option 1: Notification Center--> Tap the notice to set up-->Use for extra phone storage -->Next--> Format(For apps,files and media on this phone only)

Option 2: Notification Center--> Tap the notice to set up-->Use for portable storage ->Next ->Done(For transferring files and media between devices)

✓ **Note:**

- Do not remove the cards while the device is transferring data. Doing so may cause data to be lost or damage to the cards and device.
- The SIM cards and SD card are small parts. Please keep them away from children to avoid swallowing the card by accident.
 - Please do not touch the metal surface of SIM and SD card and keep them away from electromagnetic field to avoid damaged data.

Charge the Battery

Charge the battery before using it. Connect the USB cable to the USB power adaptor, and then plug the end of the USB cable into the USB Port.

3. GETTING STARTED

Basic Function

- Turn on the phone

Press and hold the power key for a while to turn on the phone.

- Turn off the phone

Long press the power key until a menu shows. Choose "Power off" to turn off the phone.

- Restart the phone

Long press the power key until a menu shows. Choose "Restart" to restart the phone.

- Lock the screen

Option 1: Press the power key to turn off the screen and lock it

Option 2: The screen will auto lock if you don't use the phone for a while.

- Unlock the screen

Press the power key, and then slide to top for unlocking.

4. COMMUNICATION & CONNECTION

Make a call

- Touch the phone icon on the Home screen.
- Enter the phone number you want to dial.
- Touch the phone icon to dial the number that you entered.

Send a Message

You can use this phone to exchange text messages and multimedia messages with others. The messages from the same contact will be grouped into one conversation list. So you can see your entire message history with a person conveniently.

WLAN

WLAN is a wireless networking technology that can provide internet access at distance of up to 100 meters, depending on the WLAN router and your surroundings. You can configure the WLAN as follow:

- **Settings-->Wi-Fi** to turn it on.

The device scans for available WLAN networks and displays the names of those it finds.

Tap one of the listed networks and enter the password, if asked to join in.

5. WARNING

Any changes or modifications not expressly approved by the party responsible for compliance could void the user's authority to operate this equipment.

This device complies with Part 15 of the FCC Rules. Operation is subject to the following two conditions:

- (1) This device may not cause harmful interference, and
- (2) this device must accept any interference received, including interference that may cause undesired operation.

This Product meets the government's requirements for exposure to radio waves. The guidelines are based on standards that were developed by independent scientific organizations through periodic and thorough evaluation of scientific studies. The standards include a substantial safety margin designed to assure the safety of all persons regardless of age or health.

FCC RF Exposure Information and Statement the SAR limit of USA (FCC) is 1.6 W/kg averaged over one gram of this Device GQ3277 (FCC ID: 2AOWK-3277) has been tested against this SAR limit. SAR information on this can be viewed on-line at <http://www.fcc.gov/oet/ea/fccid/>. Please use the device FCC ID number for search. This device was tested for typical operations 10mm from the body. To maintain compliance with FCC RF exposure requirements, 10mm separation distance should be maintained to the user's bodies

NOTE:

This equipment has been tested and found to comply with the limits for a Class B digital device, pursuant to Part 15 of the FCC Rules. These limits are designed to provide reasonable protection against harmful interference in a residential installation. This equipment generates, uses and can radiate radiofrequency energy and, if not installed and used in accordance with the instructions, may cause harmful interference to radio communications.

However, there is no guarantee that interference will not occur in a particular installation. If this equipment does cause harmful interference to radio or television reception, which can be determined by turning the equipment off and on, the user is encouraged to try to correct the interference by one or more of the following measures:

- Reorient or relocate the receiving antenna.
- Increase the separation between the equipment and receiver.
- Connect the equipment into an outlet on a circuit different from that to which the receiver is connected.
- Consult the dealer or an experienced radio/TV technician for help.