

Nov. 24.2006

Tune up procedure for DEKO 4008

1. General

- 1.1. This Procedure is conducted by the customer using RMS SW, on
“Parameters and Control “ screen.

2. Procedure

- 2.1. Connect to unit using RMS (see Manual).
- 2.2. Chose “Parameters and Control “ screen (see figure 1).
- 2.3. Set Max Power to the required output power using the combo choice list.
- 2.4. Set Max Gain to maximum value.
- 2.5. Set SALC check box on.
- 2.6. Set Power check box on for Downlink and uplink.

3. Result:

- 3.1. The unit is set to the required power, the SALC control the Gain so that the
output power will not exceed the maximum output power.

- Switch to the **Parameters and Control** tab as shown on the figure below and follow the instructions.

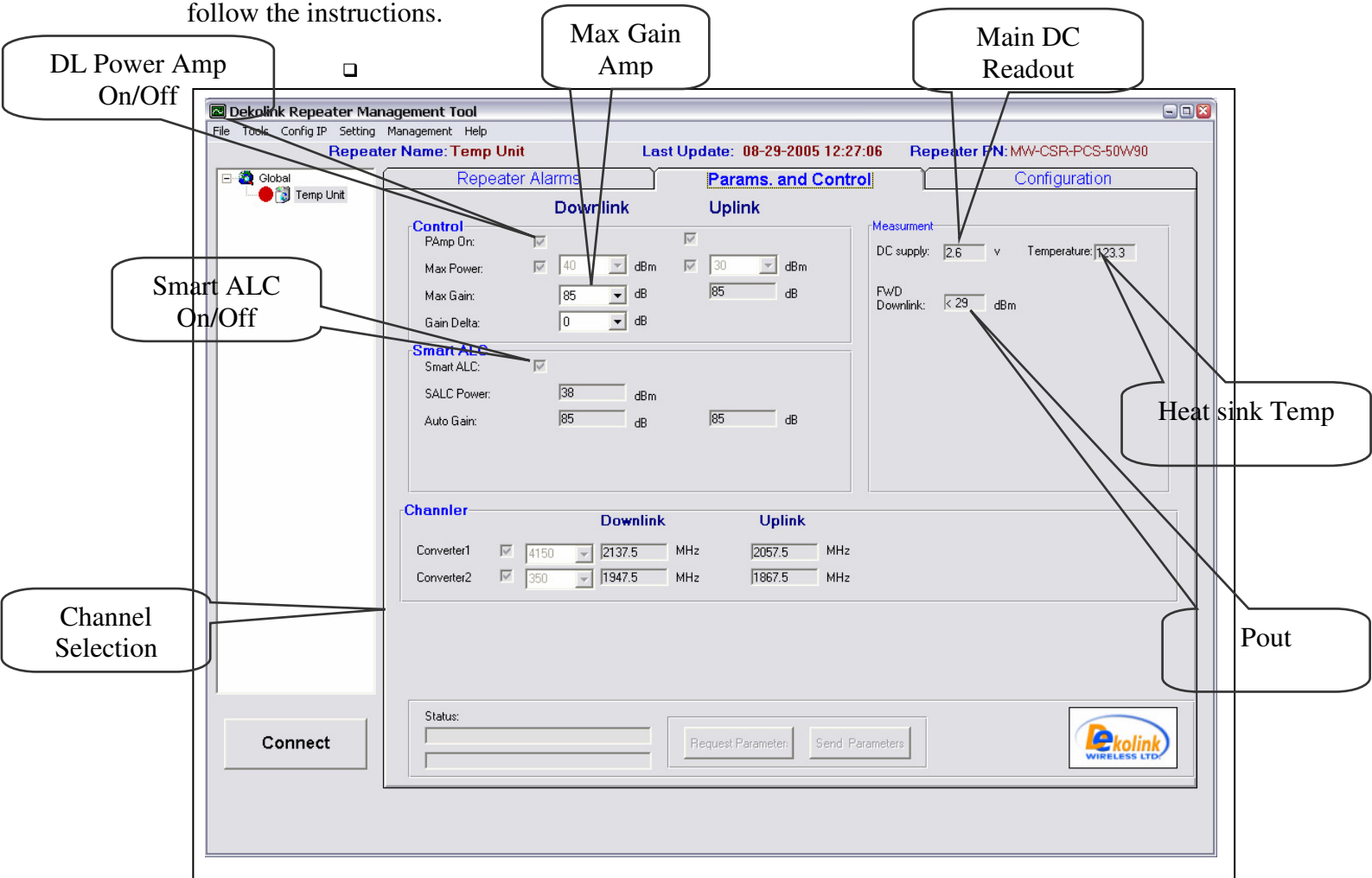


Figure 1: RMS Software – Controls and Parameters Screen