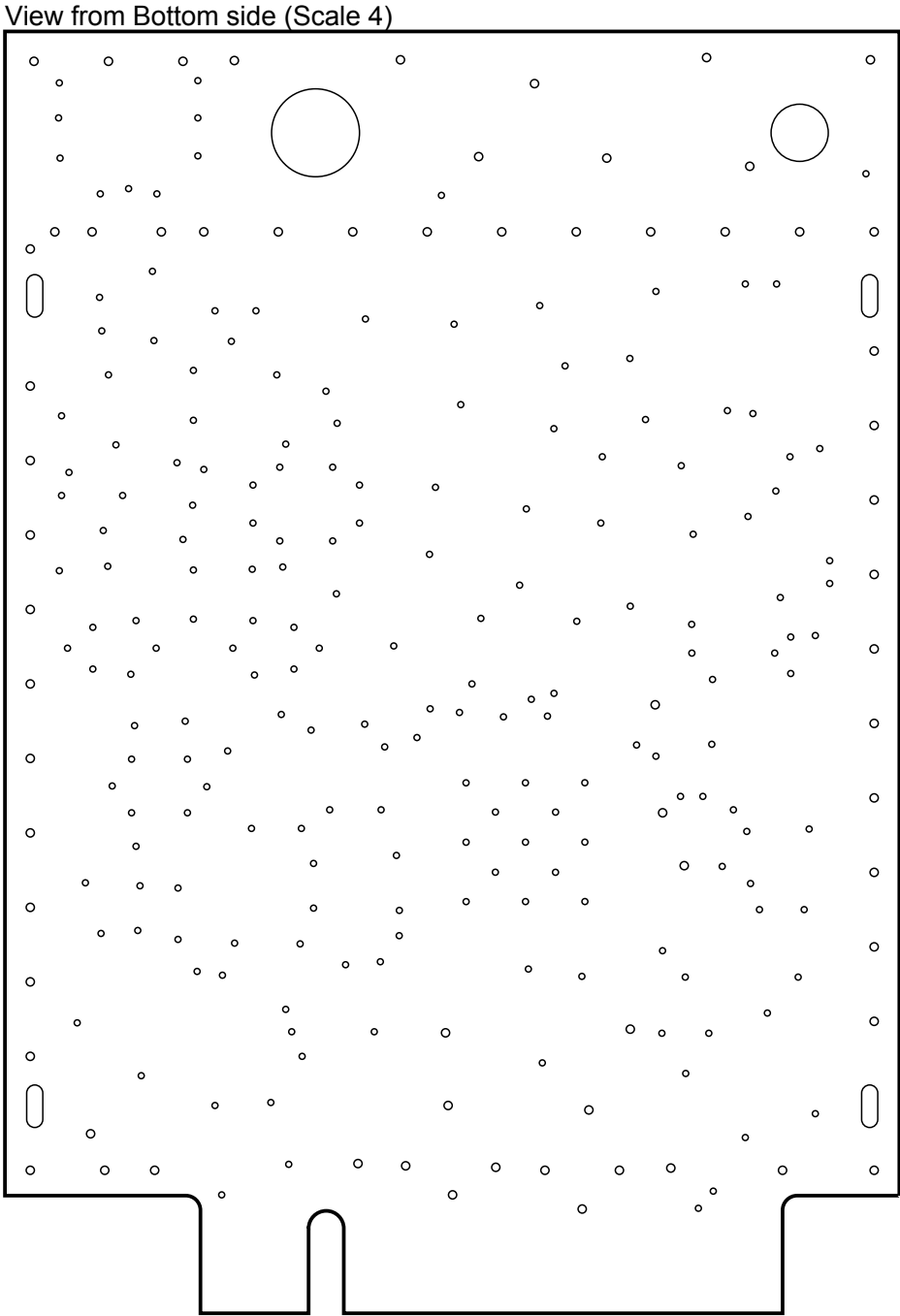
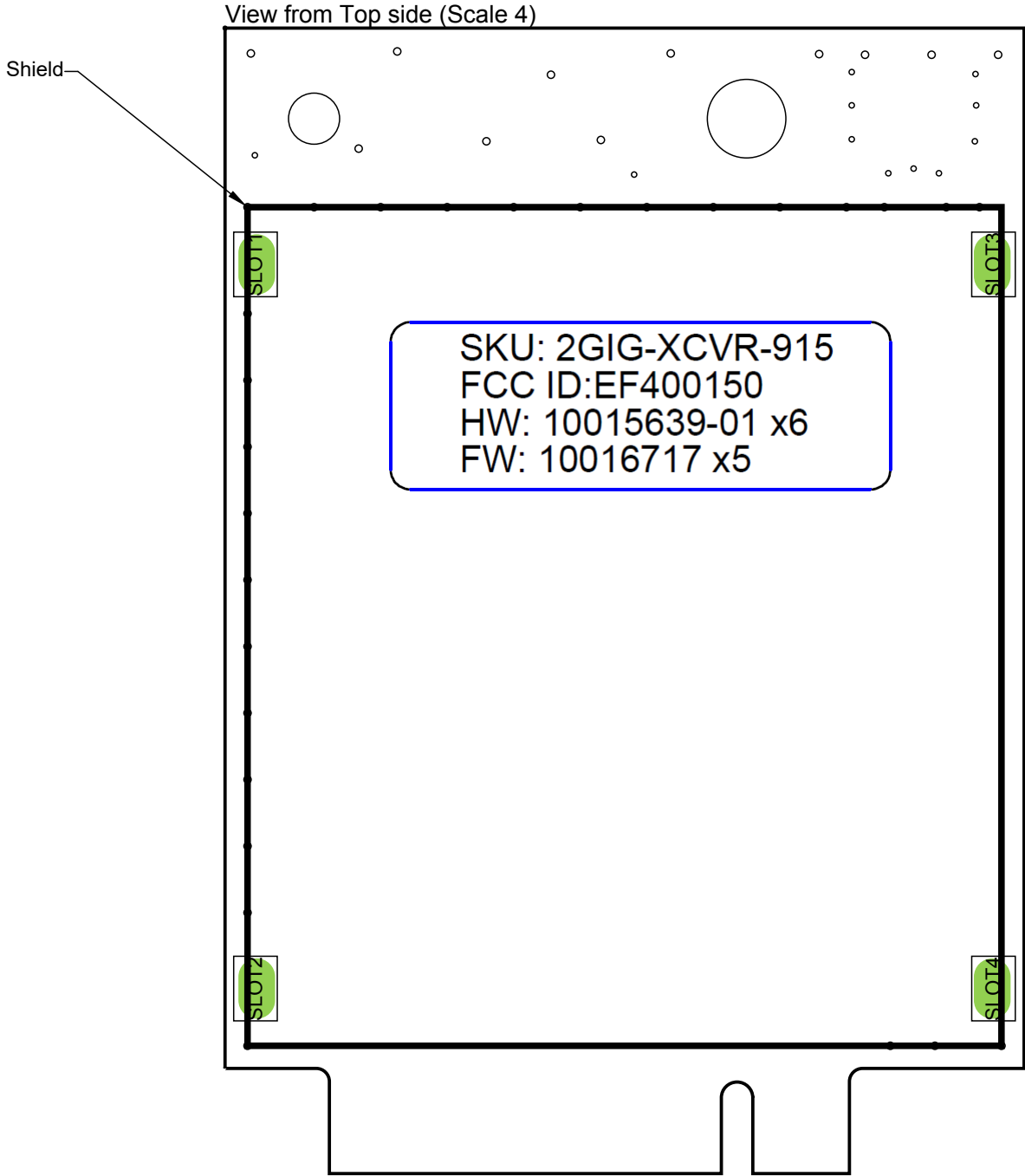



REVISION	DESCRIPTION	DATE	ECO NUMBER
X3	ADD SHIELD AND LABEL	04/06/2017	ECO-021529
X4	ADD TP13, A FIXTURE ALIGNMENT HOLE AND MOVE LABEL	05/15/2017	ECO-021759
X5	ADD NOVA 915MHz XCVR LABEL	05/20/2017	ECO-021807



Nova_915_X2 Assembly Diagram

THE INFORMATION CONTAINED IN THIS DOCUMENT IS THE CONFIDENTIAL PROPERTY OF NORTEK SECURITY & CONTROL. ANY REPRODUCTION IN PART OR AS A WHOLE WITHOUT WRITTEN PERMISSION IS PROHIBITED.

**NORTEK**
SECURITY & CONTROL

TITLE
Nova 915MHz XCVR

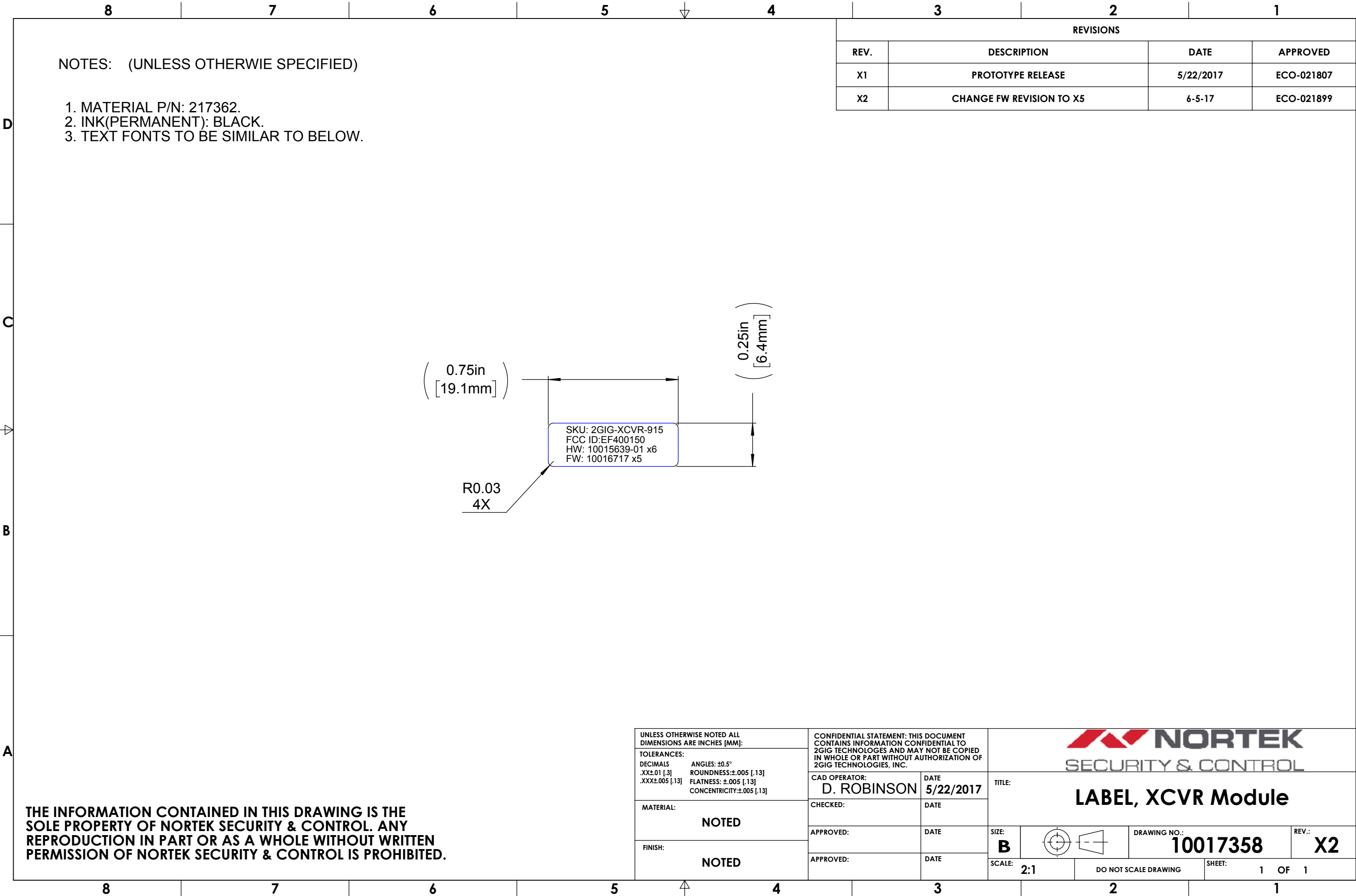
SIZE
B

DWG. NO.:
10015641

REV:
X5

SCALE: 1:1

SHEET 1 OF 2



NOTES: (UNLESS OTHERWIE SPECIFIED)

- 1. MATERIAL P/N: 217362.
- 2. INK(PERMANENT): BLACK.
- 3. TEXT FONTS TO BE SIMILAR TO BELOW.

REVISIONS			
REV.	DESCRIPTION	DATE	APPROVED
X1	PROTOTYPE RELEASE	5/22/2017	ECO-021807
X2	CHANGE FW REVISION TO X5	6-5-17	ECO-021899

SKU: 2GIG-XCVR-915
FCC ID: EF400150
HW: 10015639-01 x6
FW: 10016717 x5

R0.03
4X

0.75in
[19.1mm]

0.25in
[6.4mm]

THE INFORMATION CONTAINED IN THIS DRAWING IS THE
SOLE PROPERTY OF NORTEK SECURITY & CONTROL. ANY
REPRODUCTION IN PART OR AS A WHOLE WITHOUT WRITTEN
PERMISSION OF NORTEK SECURITY & CONTROL IS PROHIBITED.

UNLESS OTHERWISE NOTED ALL DIMENSIONS ARE INCHES [MM]:		CONFIDENTIAL STATEMENT: THIS DOCUMENT CONTAINS INFORMATION CONFIDENTIAL TO 2GIG TECHNOLOGES AND MAY NOT BE COPIED IN WHOLE OR PART WITHOUT AUTHORIZATION OF 2GIG TECHNOLOGIES, INC.			
TOLERANCES: DECIMALS .XX±.01 [.3] .XXX±.005 [.13] ANGLES: ±0.5° ROUNDNESS: ±.005 [.13] FLATNESS: ±.005 [.13] CONCENTRICITY: ±.005 [.13]		CAD OPERATOR: D. ROBINSON	DATE 5/22/2017	TITLE: LABEL, XCVR Module	
MATERIAL: NOTED		CHECKED:	DATE		
FINISH: NOTED		APPROVED:	DATE	SIZE: B	
		APPROVED:	DATE	SCALE: 2:1	DO NOT SCALE DRAWING
				DRAWING NO.: 10017358	REV.: X2
				SHEET: 1	OF 1