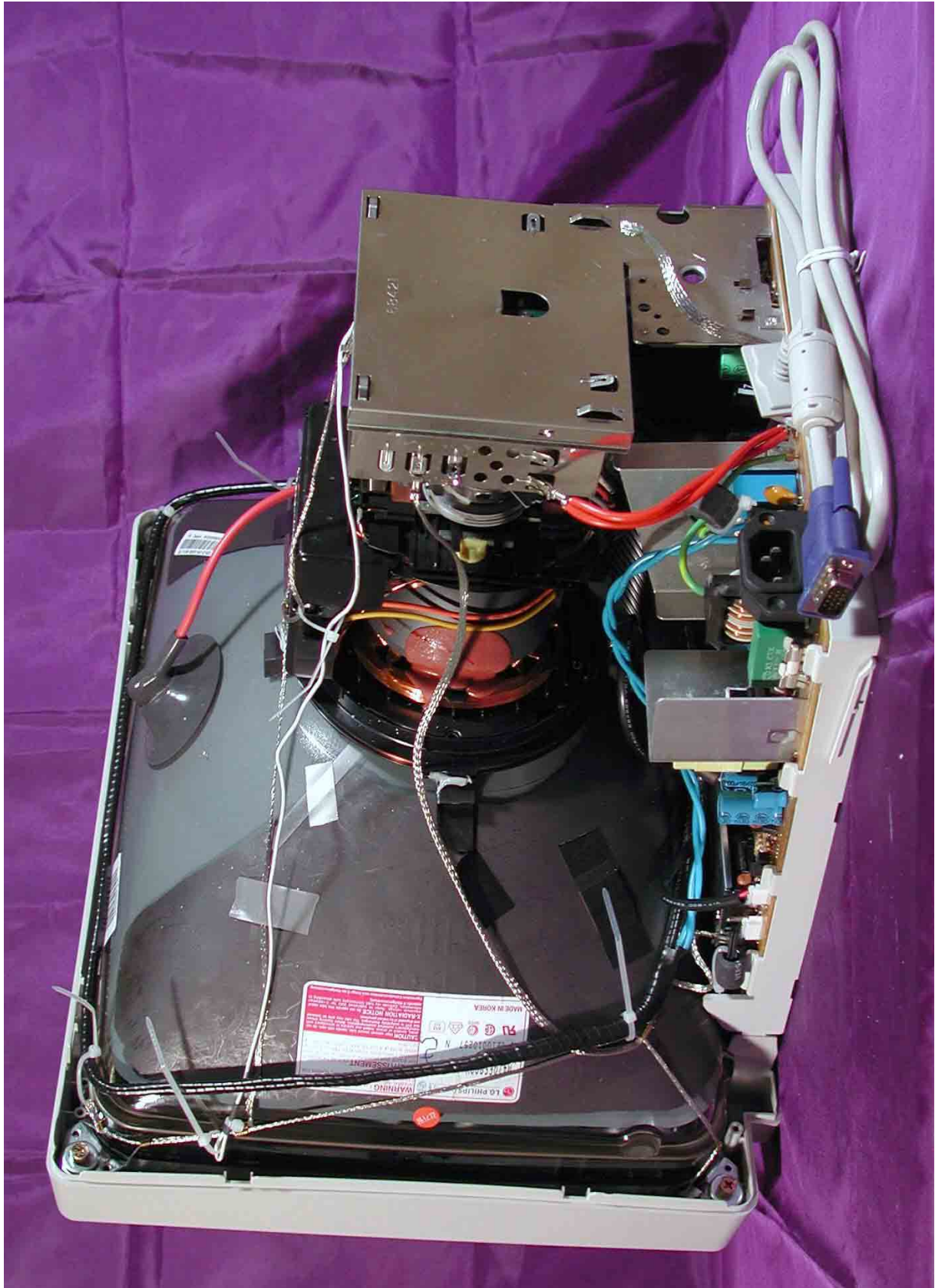


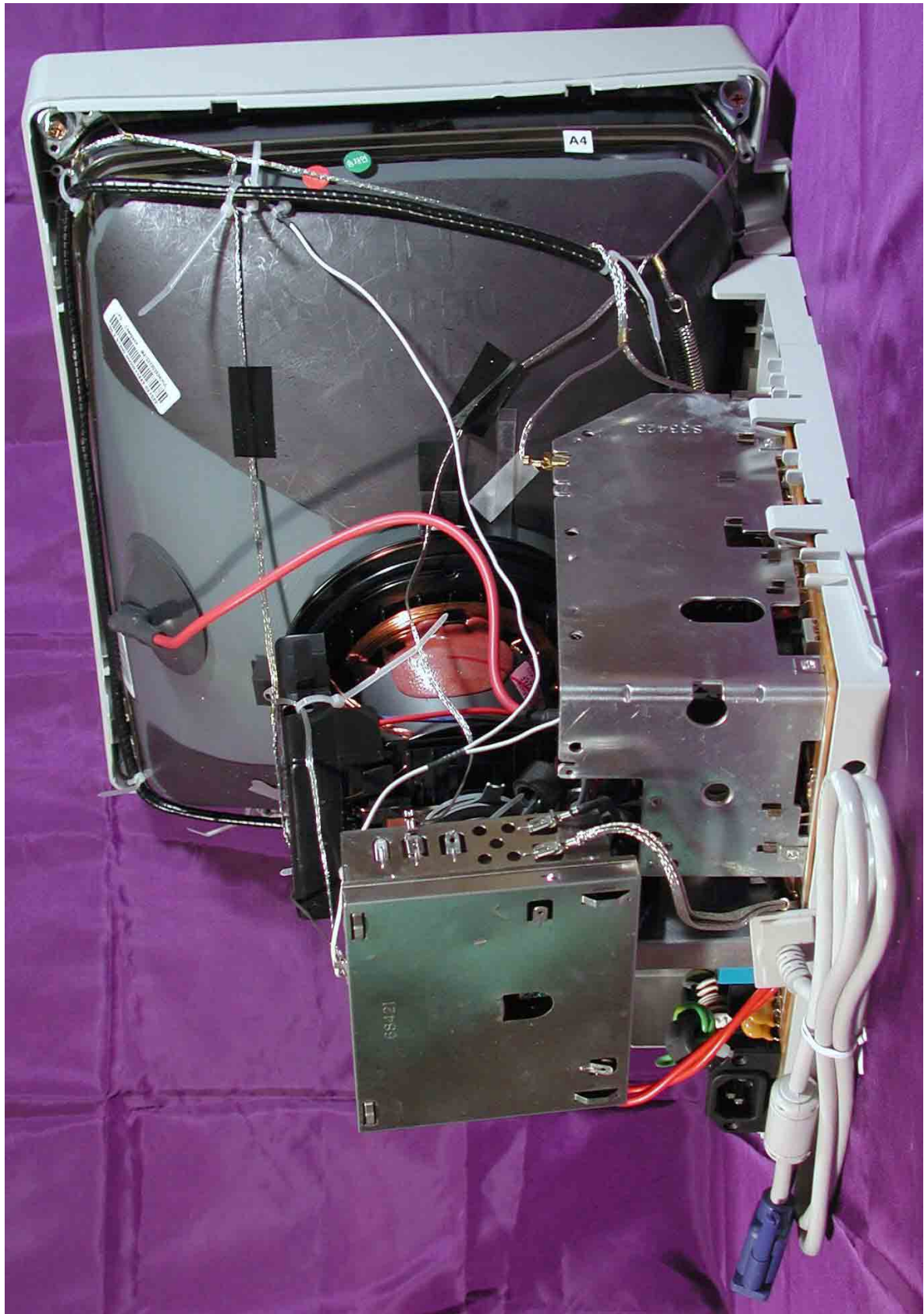
Top View Without Back Cover



Side View Without Back Cover



Side View Without Back Cover



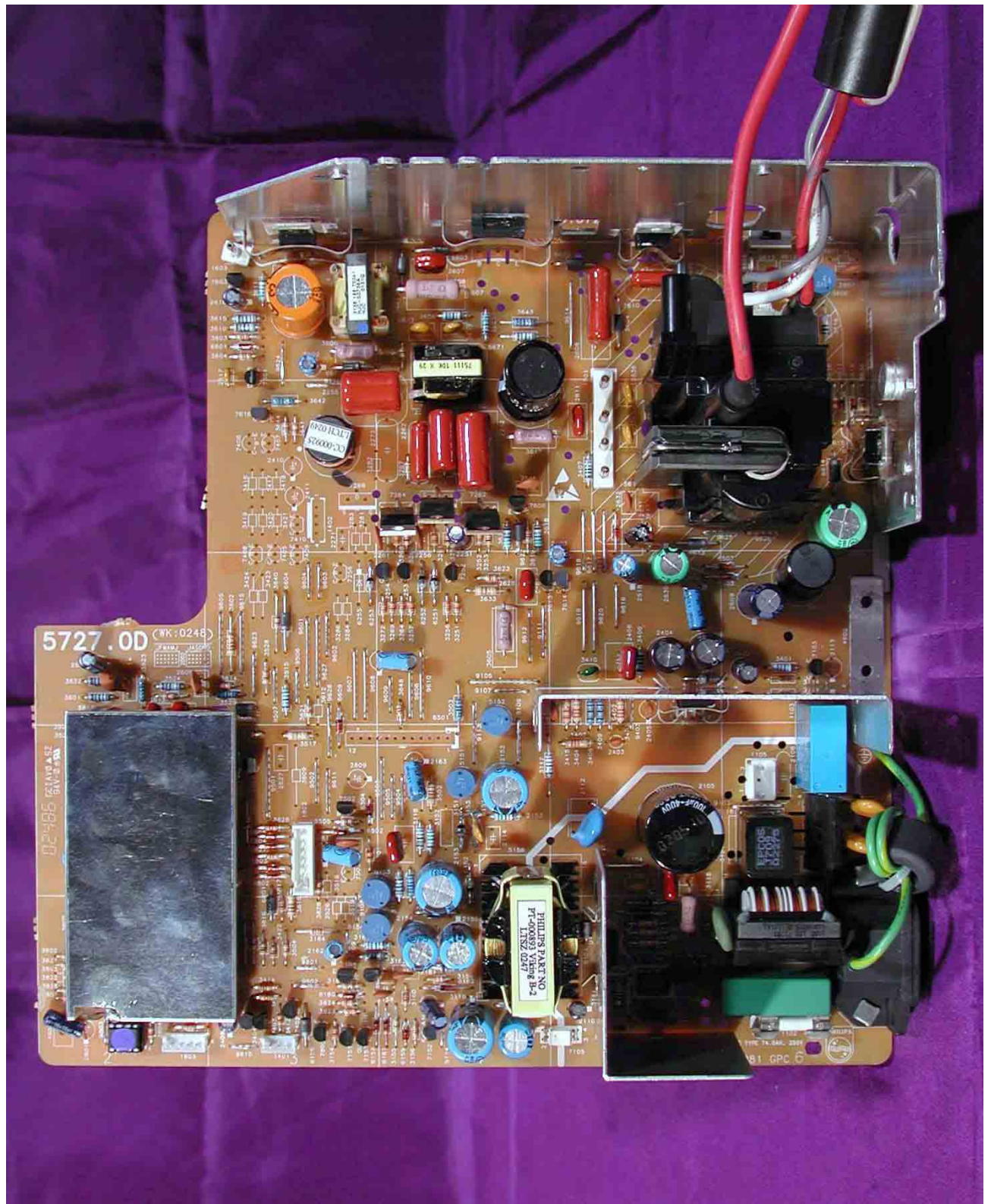
Shielding



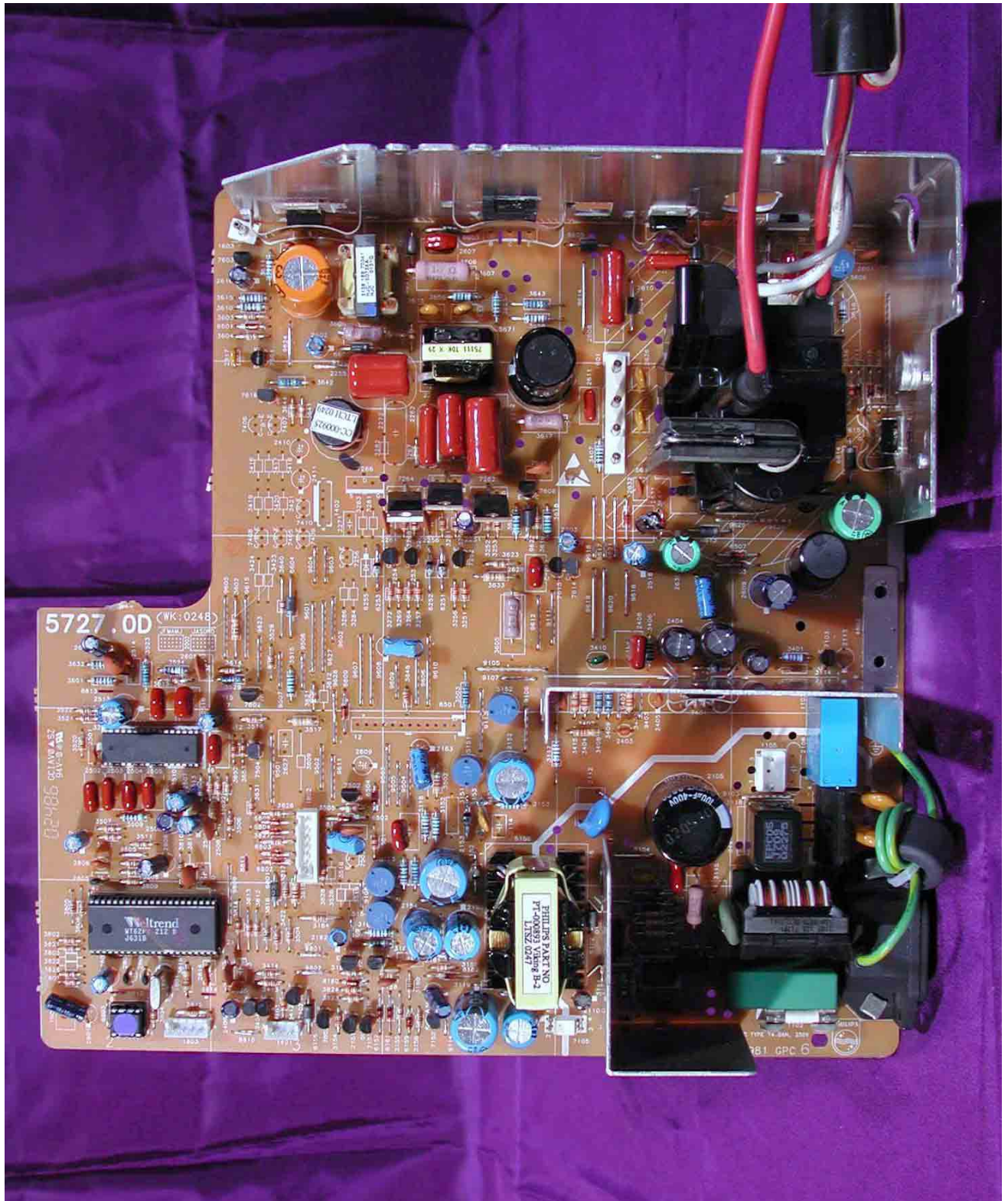
A photograph of the internal components of a laptop, showing the cooling system, battery, and various cables. The laptop is open, revealing the underside of the display and the internal chassis. The cooling system, including a fan and heat sink, is visible in the center. The battery is located at the bottom. Various cables, including power, data, and audio, are connected to the system. The laptop is resting on a purple fabric surface.



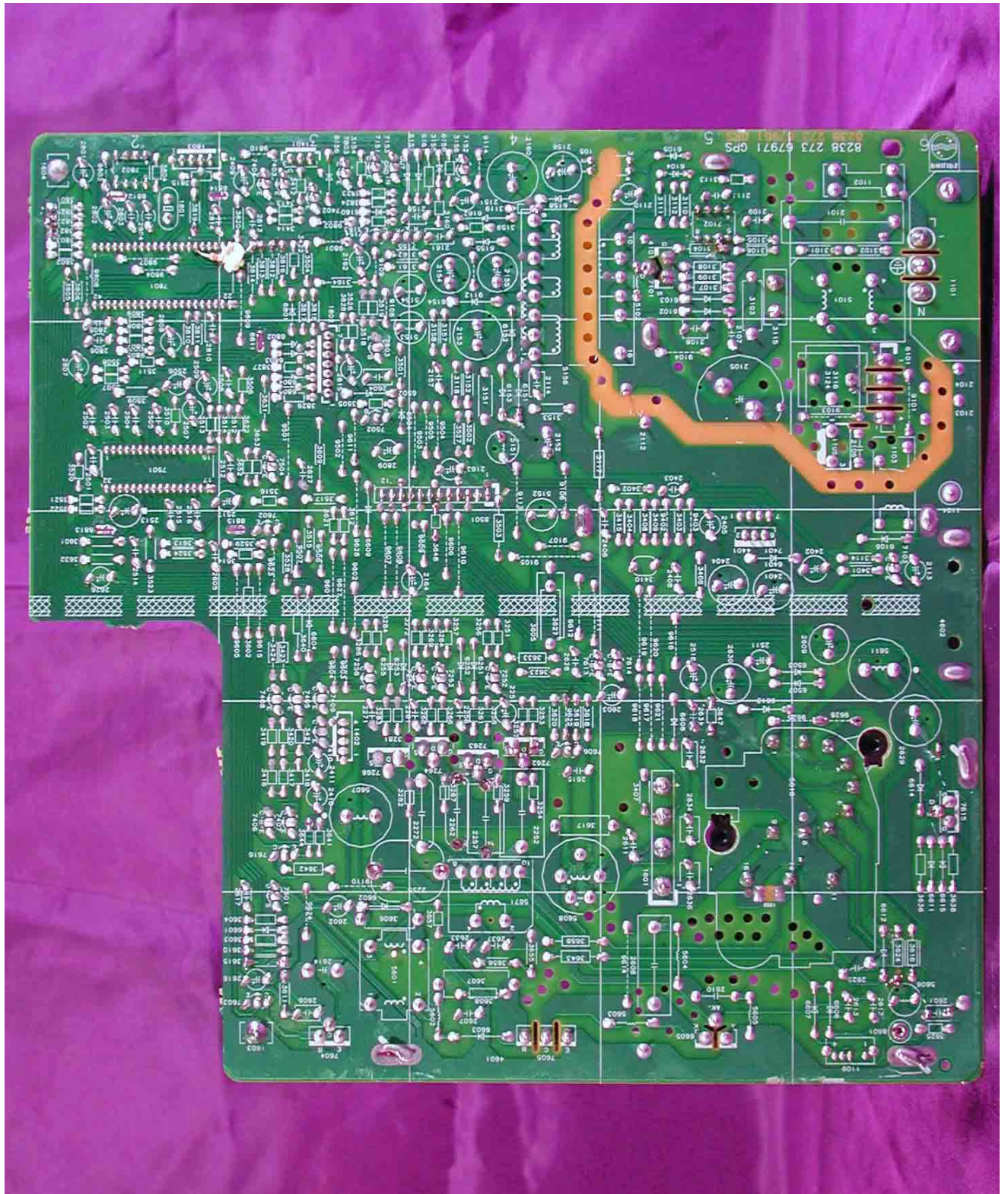
PCB Layout with Shielding



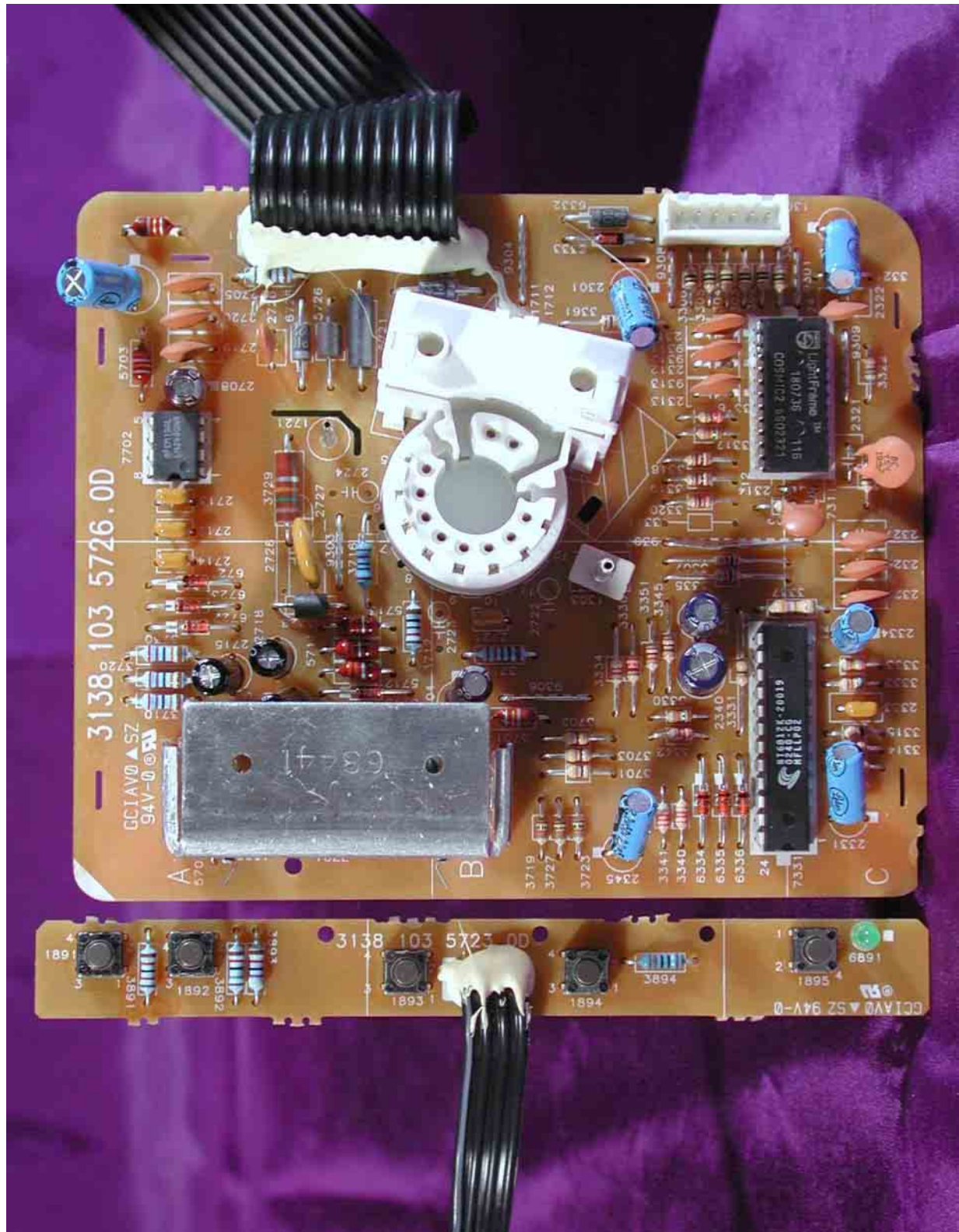
PCB Layout



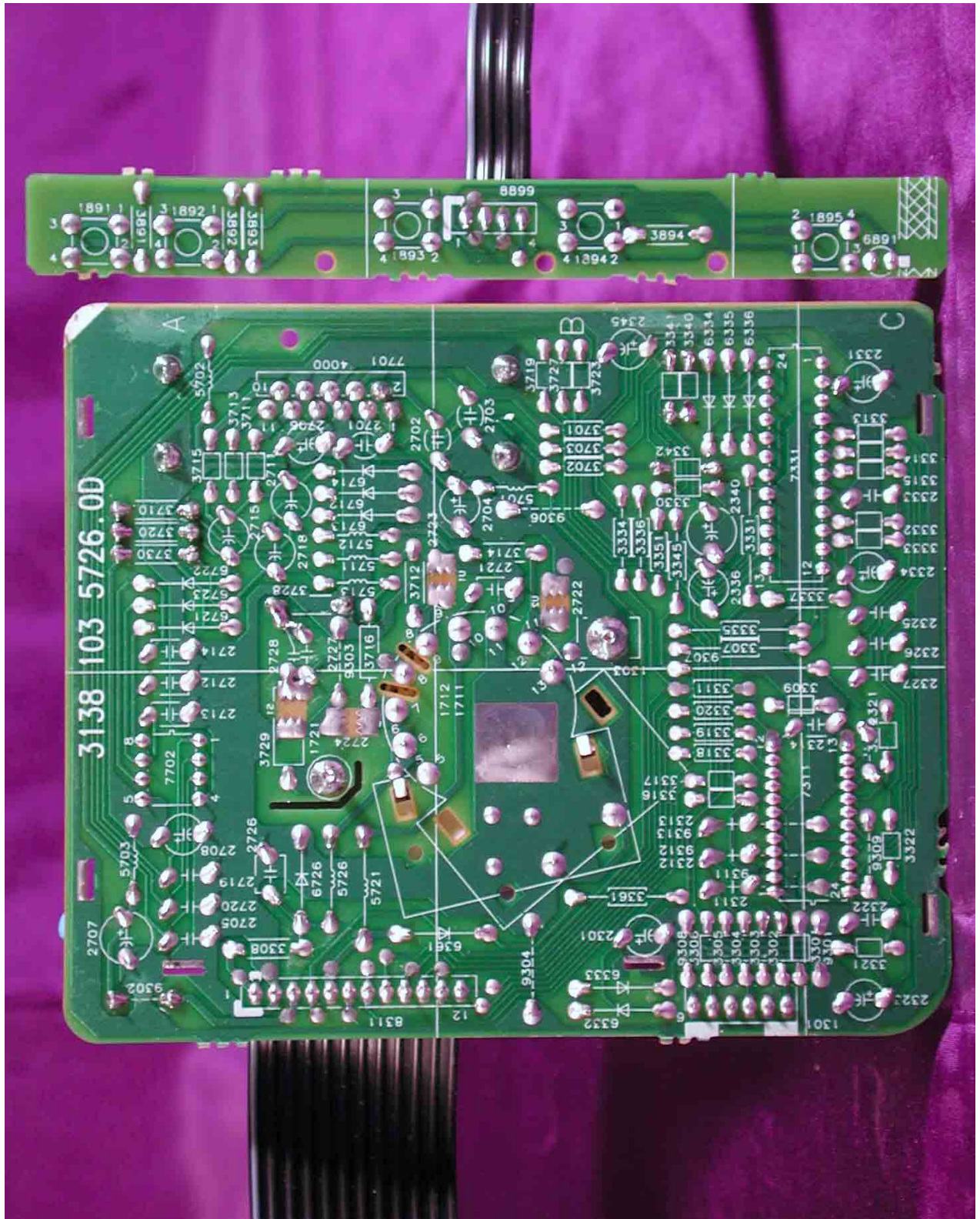
PCB Layout



PCB Layout



PCB Layout



Power Cord and I/F Cables

