

6. **Attach the case back** to the mounting plate by sliding the keyhole slots in the case back down onto the mounting plate's holding posts. The locking tab will click as the case back locks in place. To **disengage** the unit from an installed mounting plate, insert a small screwdriver into the mounting plate release hole, push down to retract the locking tab and push upward on the unit to disengage from posts.
7. **Set the DIP switch** (after the control panel has enrolled the transmitter's input IDs) for the desired primary loop characteristics, as described in the table below.

PRIMARY LOOP OPTIONS TABLE				
SWITCH SETTING	DIP SWITCH POSITION			
	1	2	3	4
ON	REPEATING TRANSMISSION (every 4 sec.) UPON PRIMARY LOOP FAULT Use for high priority alarm, such as fire.	SWITCH MUST ALWAYS BE IN THE ON POSITION	SWITCH MUST ALWAYS BE IN THE ON POSITION	SWITCH MUST ALWAYS BE IN THE OFF POSITION
OFF	SINGLE TRANSMISSION PER PRIMARY LOOP CHANGE-OF-STATE			

- Notes:**
- In order for the control panel to enroll the transmitter, the DIP switches must be set to OFF – ON – ON – OFF (see diagram 2).
 - The Auxiliary loops are not affected by the DIP switch settings.

Wiring Connections

With the battery still not inserted, connect the loop wiring to the unit's terminals (see Diagram 2).

- Notes:**
- Primary loop 1 is a supervised loop and must have an end-of-line (EOL) resistor (470K ohms, supplied) placed across the last sensor.
 - If loop 2 is not going to be used, the magnet is not necessary.
 - If loop 3 is not going to be used, no connection is needed across its terminals.

BATTERY INSTALLATION/REPLACEMENT

- Remove the transmitter's cover (if not already off) as described in Mounting Step 1.
- Observe correct polarity and insert the battery provided into the battery holder (see Diagram 2). *Take care not to bend the antenna.*
Note: Replace battery only with: Duracell DL123A, Sanyo CR123A, Panasonic CR123A, Ademco 466, Varta CR123A, or Tekecell CR123A.
CAUTION: Risk of fire, explosion, and burns. Do not recharge, disassemble, heat above 212°F (100°C), or incinerate. Dispose of used batteries promptly. Keep away from children.
- To replace the cover, engage the hooks along the top edge and snap shut.

SPECIFICATIONS

Dimensions 1-9/16"W x 3-1/2"H x 1-3/16"D (40mm x 89mm x 30mm)
Battery 3V Lithium (see BATTERY INSTALLATION/REPLACEMENT).

TO THE INSTALLER

Regular maintenance and inspection (at least annually) by the installer and frequent testing by the user are vital to continuous satisfactory operation of any alarm system. The installer should assume the responsibility of developing and offering a regular maintenance program to the user, as well as acquainting the user with the proper operation and limitations of the alarm system and its component parts. Recommendations must be included for a specific program of frequent testing (at least weekly) to insure the system's operation at all times.

FOR DETAILS ON LIMITATIONS OF THE ENTIRE ALARM SYSTEM, REFER TO THE CONTROL PANEL'S INSTALLATION INSTRUCTIONS FOR THE RECEIVER/CONTROL WITH WHICH THIS DEVICE IS USED.

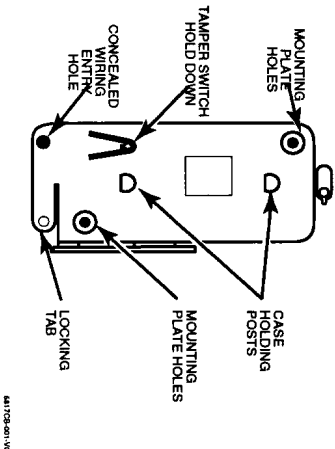


Diagram 1. Mounting Plate

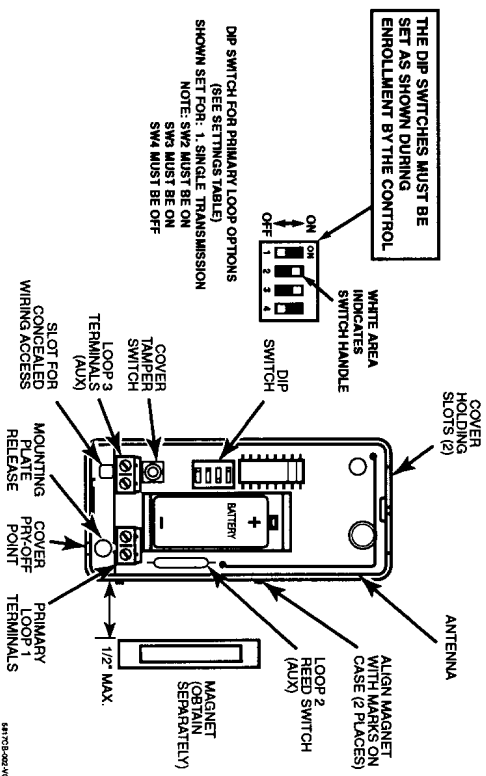


Diagram 2. Transmitter, Cover Removed