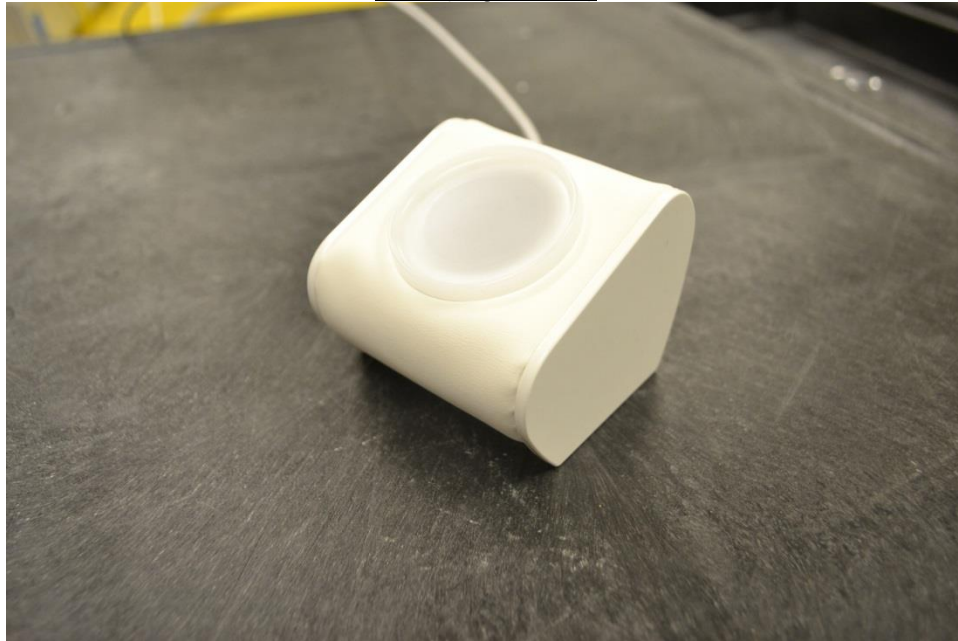


8. SETUP PHOTOS

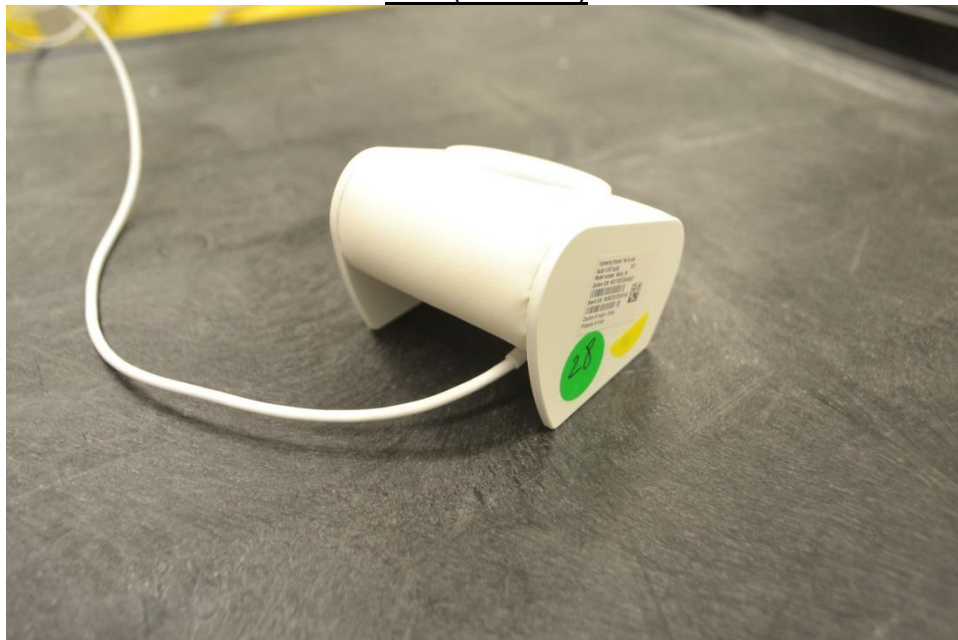
Electric and magnetic field probe, 9 kHz – 30 MHz - EUT basic setup

A foam extension was attached to the front of the probe. The tip of the extension is 10cm from the geometric center of the probe. The probe was positioned so that the tip of the extension was coincident with the edge(s) of the EUT as shown in the photographs below.

EUT (Right Side)



EUT (Left Side)



Edge 1 EUT and Watch w/metal band



Edge 2 EUT and Watch w/metal band



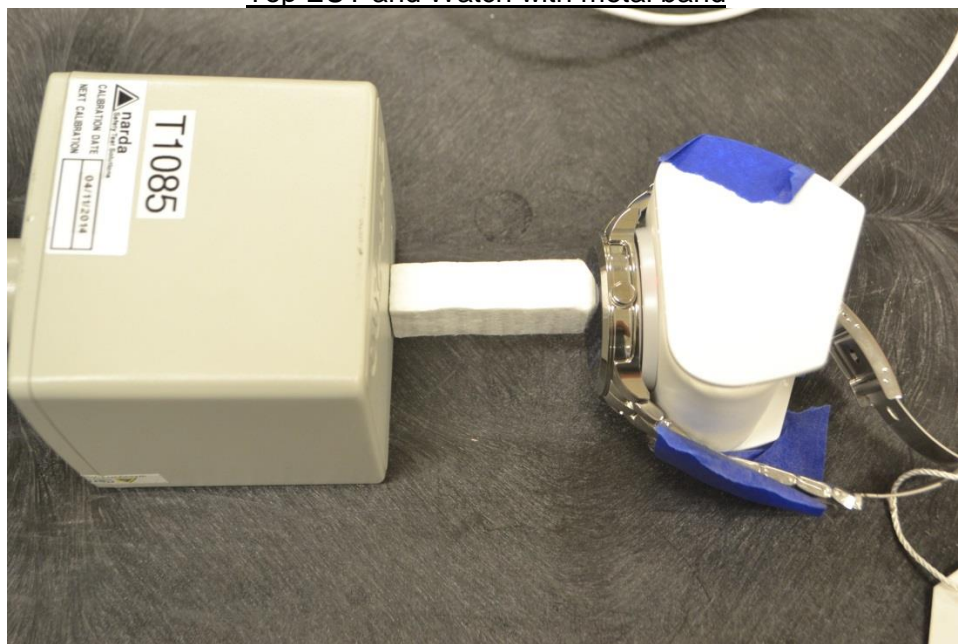
Edge 3 EUT and Watch with metal band



Edge 4 EUT and Watch with metal band



Top EUT and Watch with metal band



EUT without Watch



END OF REPORT