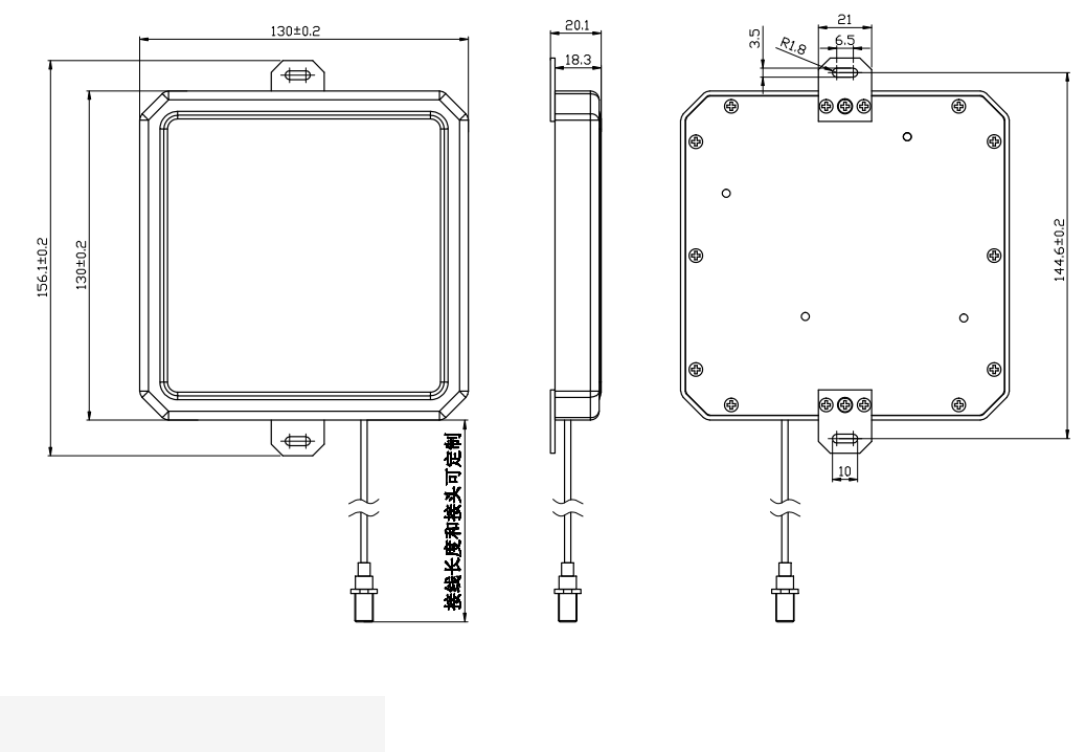


1. Antenna Description:

Antenna type	External antenna
Model	SIR7223
Frequency range	902.75MHz-927.25MHz
Manufacturer	Beijing Silion Technology Corp., Ltd.
ANT Peak Gain	6.0 dBi

2. Antenna Photo:



3. Test Equipment & Conditions

3.1 Test instrument

VSWR is tested using Agilent E5071B connected to a hand mechanism, and the status is free space.

3.2 Test environment and methods

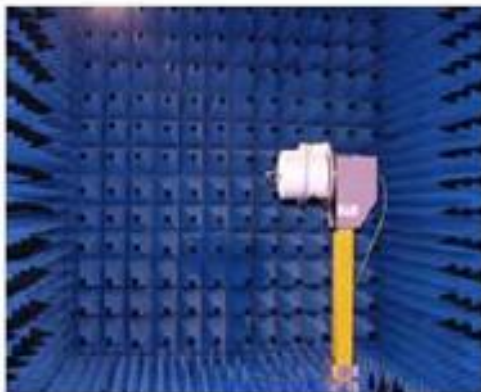
Dark room specifications: ETS-743

TD-SCDMA test equipment: StarPoint SP6010/Agilent 8960

LTE-TDD/FDD-SCDMA test equipment: StarPoint SP8011/CMW500

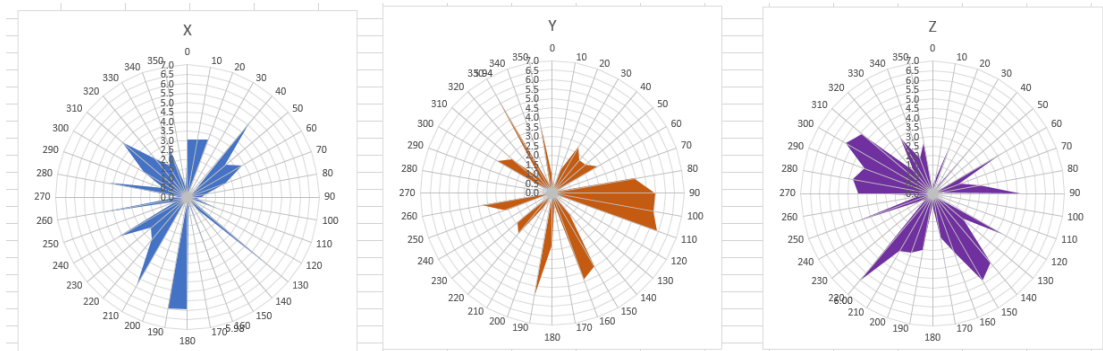
WCDMA/GSM/CDMA test equipment: Agilent 8960

Passive efficiency testing equipment: Agilent Technologies E5071B

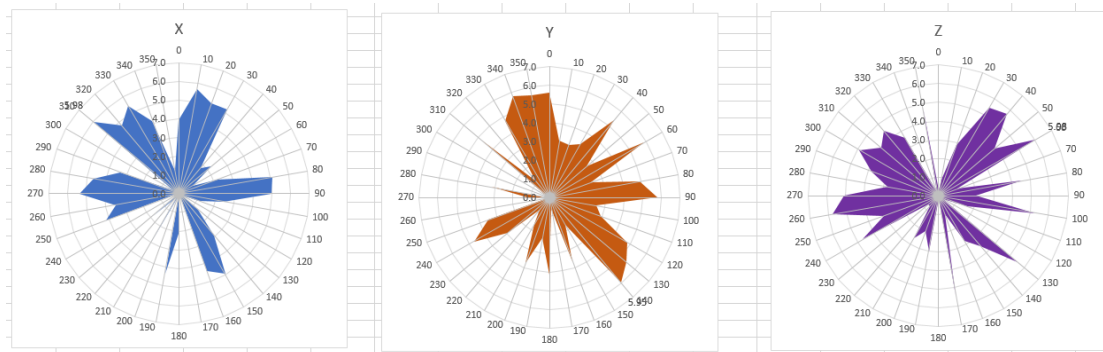


4 . Antenna Radiation Pattern

902.75MHz



914.75MHz



927.25MHz

