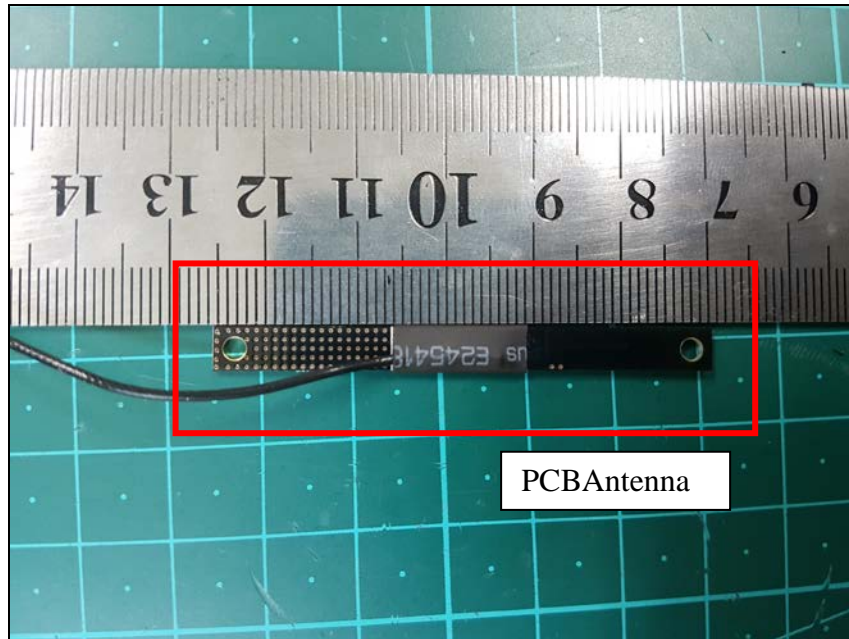


Internal photos of EUT

Antenna view of EUT



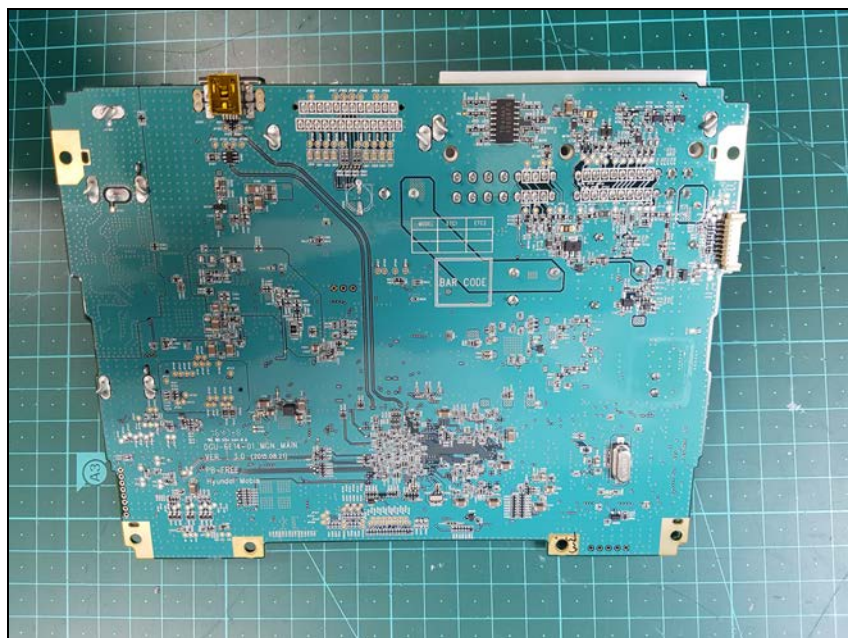
Internal view of EUT



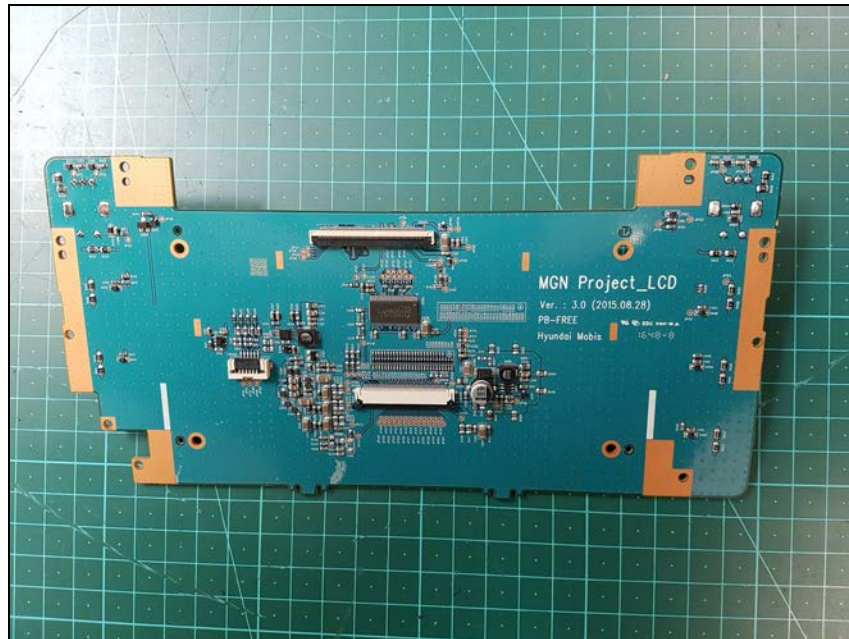
Top view of Main PCB



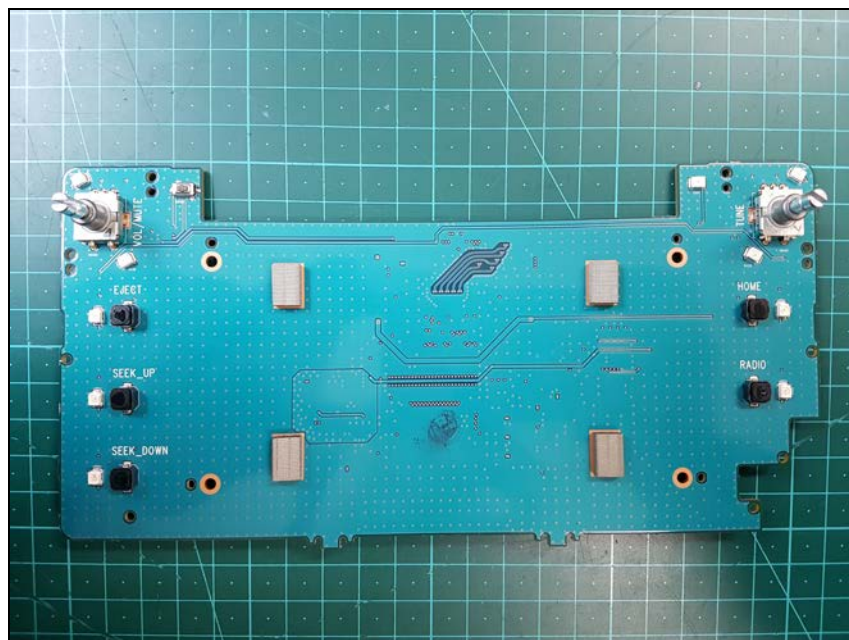
Bottom view of Main PCB



Top view of Front PCB



Bottom view of Front PCB



Top view of GPS PCB



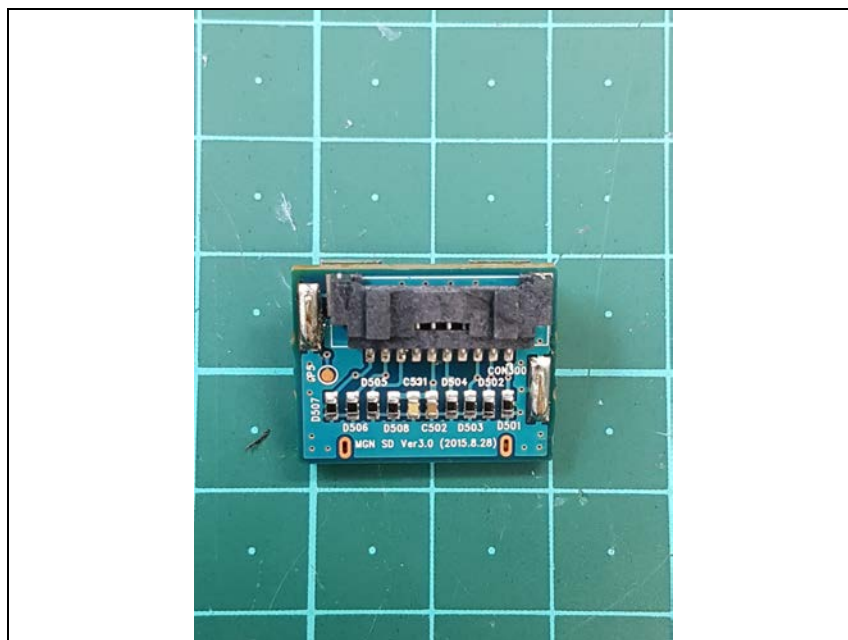
Bottom view of GPS PCB



Top view of SD slot PCB



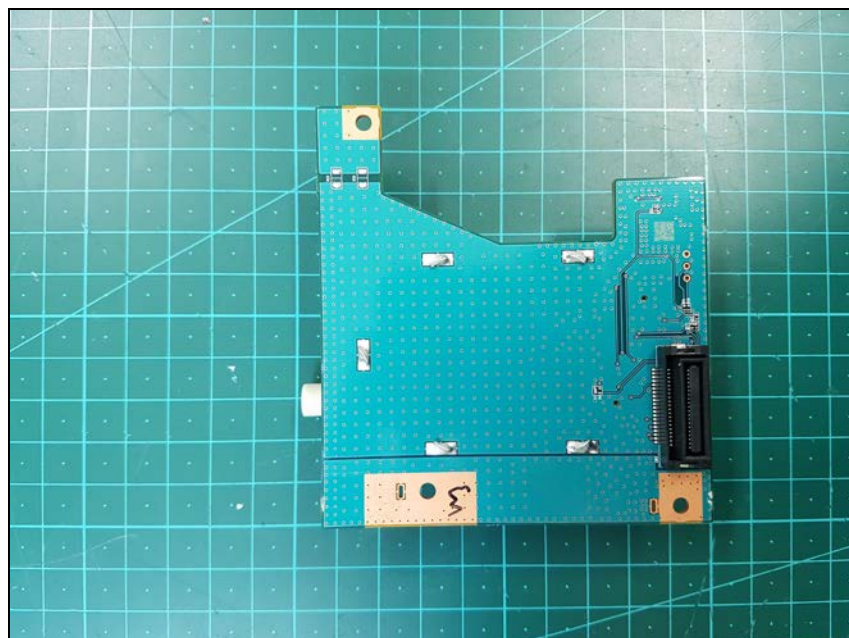
Bottom view of SD slot PCB



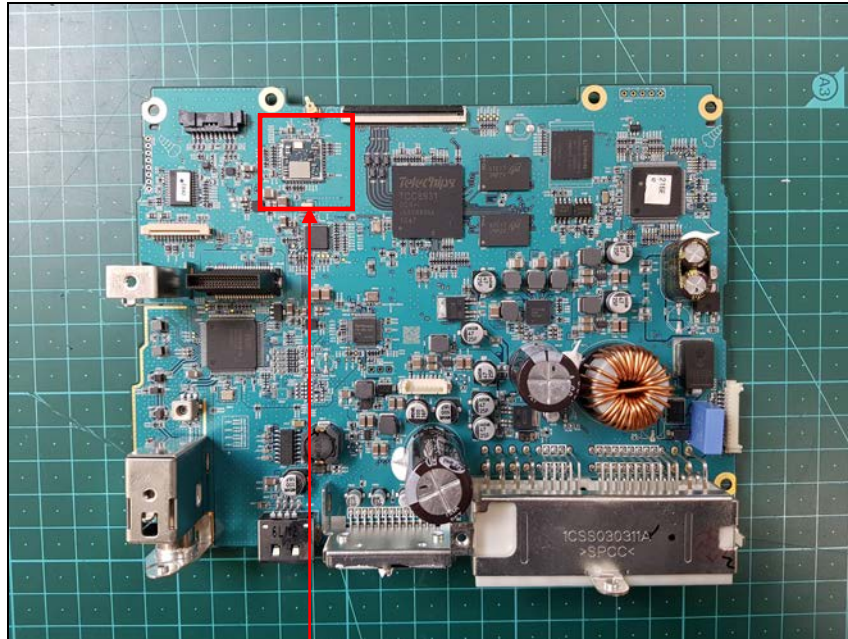
Top view of Sub PCB



Bottom view of Sub PCB



Top view of Module



Remove shield can(Bluetooth Module)

