



EXHIBIT 2 - TEST SETUP PHOTOGRAPHS

TEST REPORT NUMBER	DOJ 1504TEL567-C
TEST REPORT DATE	27 th Apr 2015
TEST REPORT VERSION	1.20
MANUFACTURER	Gemtek Electronics (ChangSHU) Co.
PRODUCT NAME	5GHz ePMP Integrated Radio and 5GHz ePMP Connectorized Radio
PRODUCT MODEL NO.	C058900P072A, C058900C072A, C058900P062A, C058900C062A
PART NO.	142000001193A
REV	0B
CONDITION OF EUT WHEN RECEIVED	GOOD and in working condition
ISSUED TO	3800 Golf Road, Suite 360 Rolling Meadows, IL 60008. USA +1 888-863-5250
ISSUED BY	TARANG Lab Wipro Technologies, SJP2, Survey#70,77,78/8A, Dodda Kanelli, Sarjapur road, Bangalore. Karnataka. India - 560 035 Tel: +91-80-30292929 Fax: +91-80-30298200 Email: tarang.planet@wipro.com Web: www.wipro.com



AMENDMENT HISTORY

Amendment Number	Amendment Date	Author of Amendment	Previous Report Version	Previous Report Date
1.10	22 nd Apr 2015	Harsha K	1.0	10 th Apr 2015
Amendment Details	Test setup photos have been updated based on the radiated emissions test done on 22 nd Apr 2015.			

Amendment Number	Amendment Date	Author of Amendment	Previous Report Version	Previous Report Date
1.20	27 th Apr 2015	Harsha K	1.10	22 nd Apr 2015
Amendment Details	Test setup photos have been updated for the following: a) Radiated Emissions Test Setup for above 1GHz. This is reflected in Figures 8 to 11. b) Conducted Emissions Test Setup. This is reflected in Figure 13.			

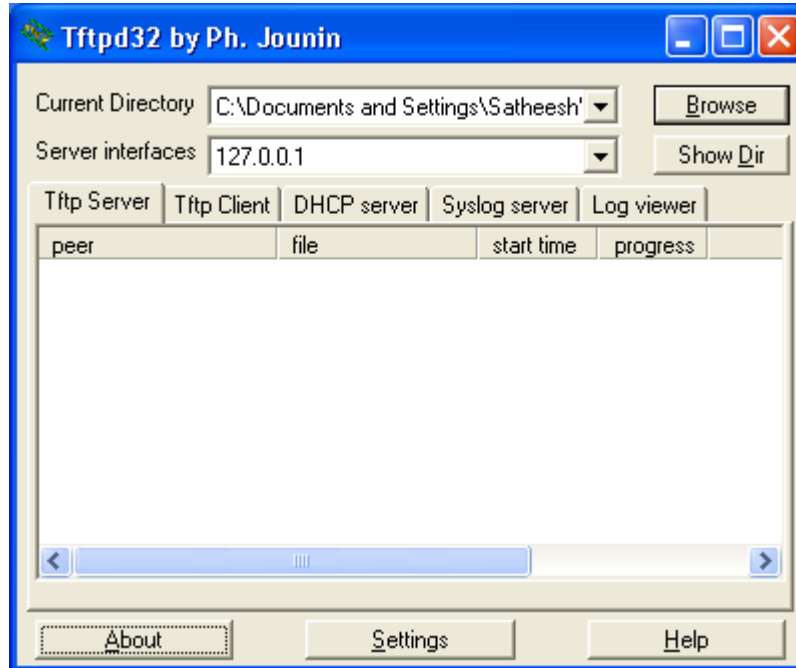


Figure 1: tftpd32 application screenshot

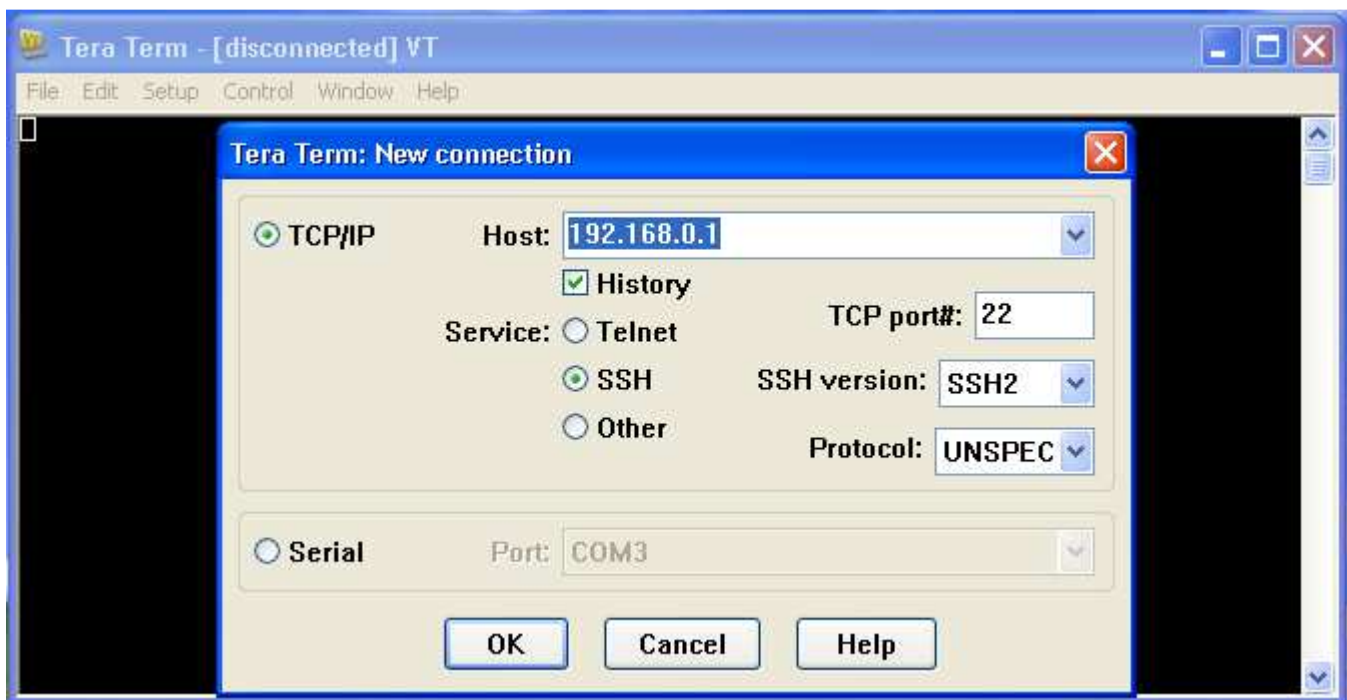


Figure 2: Tera term application screenshot

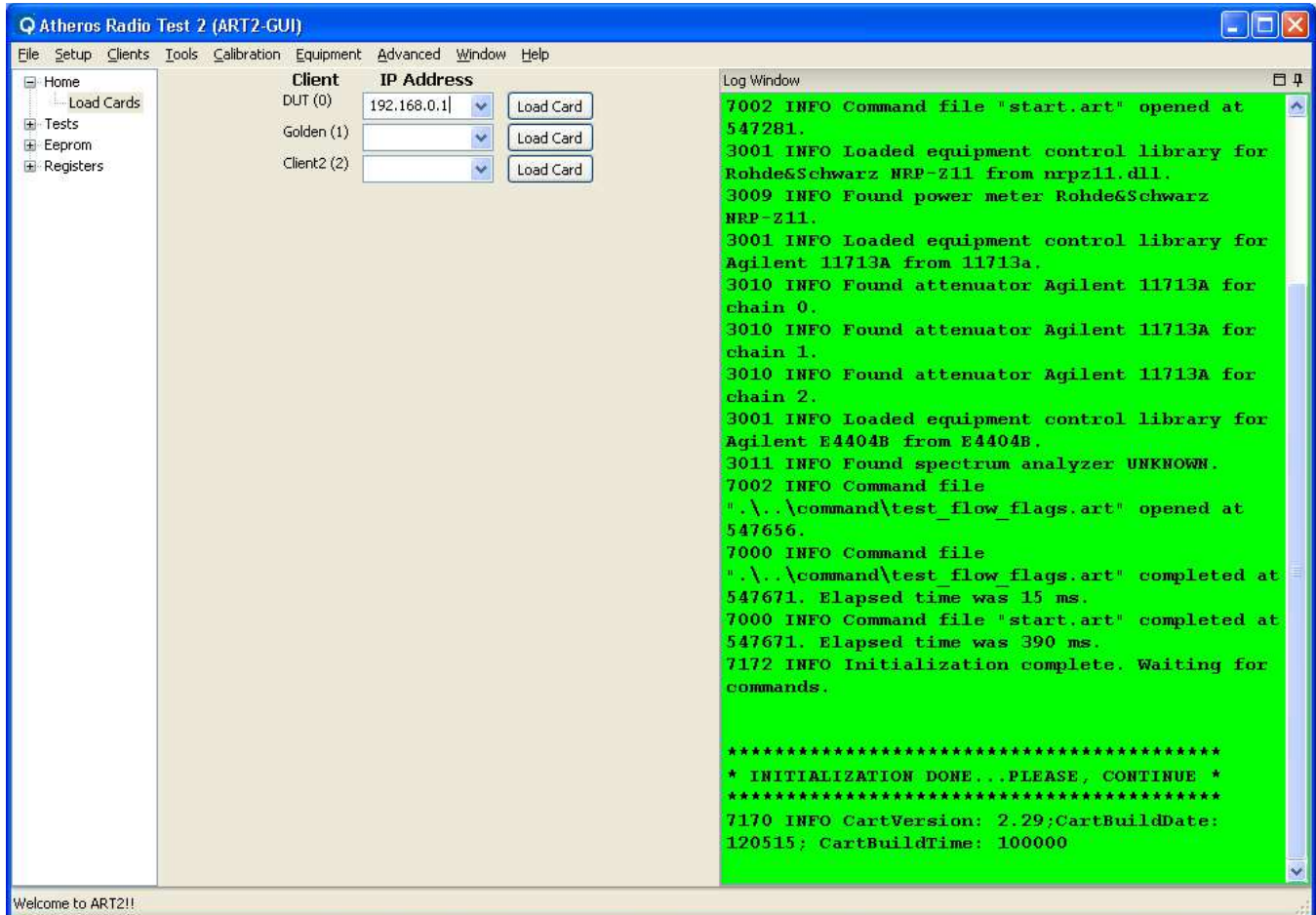


Figure 3: Atheros Radio Test GUI screenshot – 1

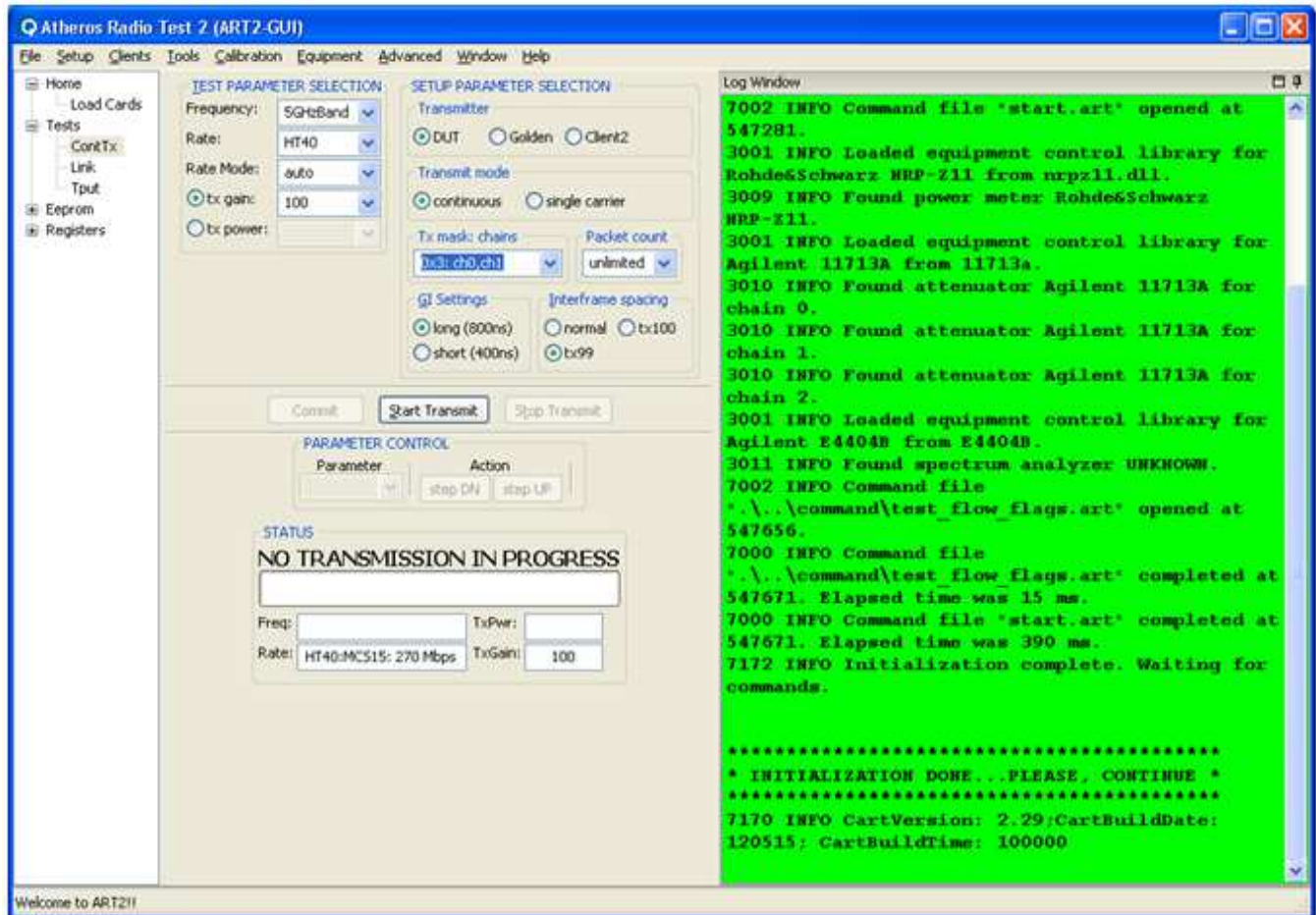


Figure 4: Atheros Radio Test GUI screenshot – 2



Figure 5: Test setup for Radiated Emission E field measurement from 9 kHz to 30MHz



Figure 6: Test setup for Radiated Emission test from 30MHz to 1GHz - Horizontal Polarization

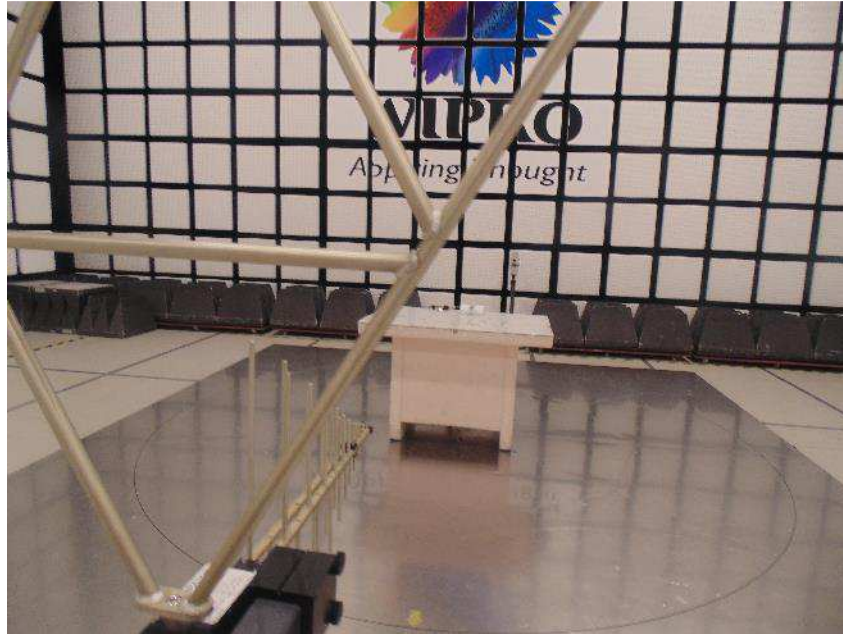


Figure 7: Test setup for Radiated Emission test from 30MHz to 1GHz - Vertical Polarization



Figure 8: Test setup for Radiated Emission Test from 1 GHz to 18 GHz – Horizontal Polarization



Figure 9: Test setup for Radiated Emission Test from 1 GHz to 18 GHz – Vertical Polarization



Figure 10: Test setup for Radiated Emission Test from 18 GHz to 40 GHz – Horizontal Polarization



Figure 11: Test setup for Radiated Emission Test from 18 GHz to 40 GHz – Vertical Polarization

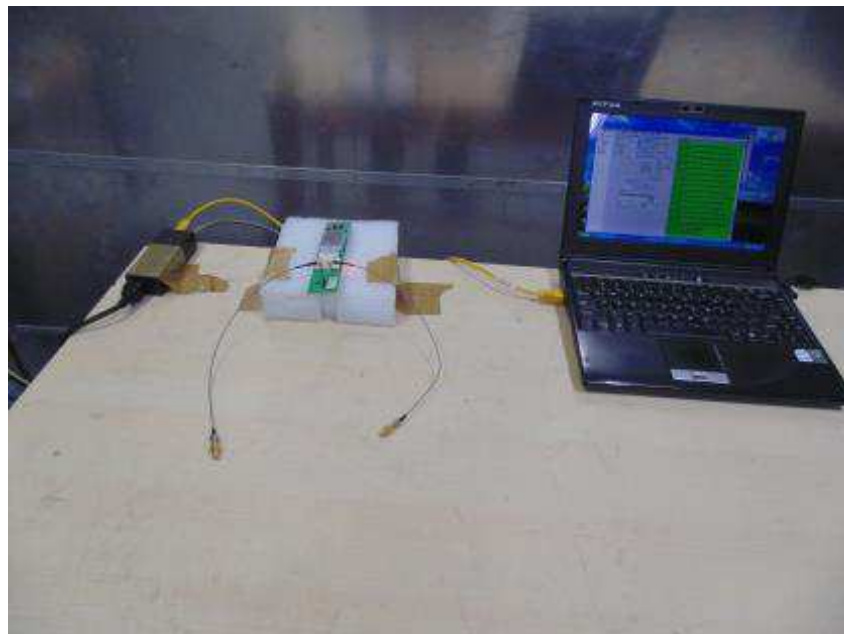


Figure 12: EUT setup for Conducted Emission Test



Figure 13: Conducted Emission Test set up photograph – 150 kHz to 30 MHz



Figure 14: Conducted RF Test set up photograph



END OF REPORT