

145mm

FCC/ ISED Radiation Exposure Statement

This equipment should be installed and operated with minimum distance 20cm between the radiator & your body. This transmitter must not be co-located or operating in conjunction with any other antenna or transmitter.

Cet équipement doit être installé et utilisé avec un minimum de 20cm de distance entre le radiateur et votre corps. Cet émetteur ne doit pas être co-localisés ou fonctionner en conjonction avec une autre antenne ou émetteur.

SMART LED BULB

Environmental Specification:

- Only install in operating environments between -20°C and + 40°C (-4°F and +104°F).

Federal Communication Commission Interference Statement

This device complies with part 15 of the FCC Rules. Operation is subject to the following two conditions: (1) This device may not cause harmful interference, and (2) this device must accept any interference received, including interference that may cause undesired operation. This equipment has been tested and found to comply with the limits for a Class B digital device, pursuant to part 15 of the FCC Rules. These limits are designed to provide reasonable protection against harmful interference in a residential installation. This equipment generates, uses and can radiate radio frequency energy and, if not installed and used in accordance with the instructions,

4

1

145mm

may cause harmful interference to radio communications. However, there is no guarantee that interference will not occur in a particular installation. If this equipment does cause harmful interference to radio or television reception, which can be determined by turning the equipment off and on, the user is encouraged to try to correct the interference by one or more of the following measures:

- Reorient or relocate the receiving antenna.
- Increase the separation between the equipment and receiver.
- Connect the equipment into an outlet on a circuit different from that to which the receiver is connected.
- Consult the dealer or an experienced radio/TV technician for help.

FCC Caution: Any Changes or modifications not expressly approved by the party responsible for compliance could void the user's authority to operate the equipment.

2

ISED RSS Warning

This device complies with Innovation, Science and Economic Development Canada Compliance license-exempt RSS standard (s). Operation is subject to the following two conditions: (1) this device may not cause interference, and (2) this device must accept any interference, including interference that may cause undesired operation of the device.

Le présent appareil est conforme aux CNR d'Innovation, Sciences et Développement économique ISED applicables aux appareils radio exempts de licence. L'exploitation est autorisée aux deux conditions suivantes:

- (1) l'appareil ne doit pas produire de brouillage, et
- (2) l'utilisateur de l'appareil doit accepter tout brouillage radioélectrique subi, même si le brouillage est susceptible d'en compromettre le fonctionnement.

3

165mm

LED LAMP

Installation Guide

1 DOWNLOAD AND INSTALL THE FEIT ELECTRIC APP

- Search for the Feit Electric App in the App Store or Google Play Store.
- Download and install the Feit Electric App on your smart device.
- Setup an account or login to your existing account.



2 INSTALL YOUR LIGHT BULB

- Install your light bulb(s) into a socket.

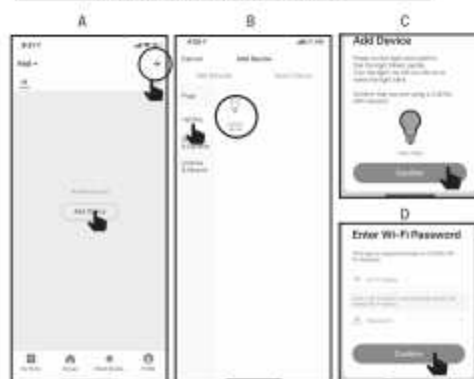
NOTE: Constant power to the bulb(s) is required at all times.



3 ADDING YOUR SMART WI-FI BULB USING THE FEIT ELECTRIC APP

- Tap + in the upper right corner. Note: if this is the first device you are setting up you can also select Add Device (A).
- Tap Lighting and select Lighting device (B).
- Power On the bulb(s) and confirm the bulb(s) is blinking. Then tap Confirm (C).
- You will be prompted to confirm your WIFI network and enter password. Then tap Confirm (D).

Be sure to connect to a 2.4 GHz WIFI network that covers your installation location.



NOTE: If the bulb(s) is not blinking, turn the bulb(s) ON-OFF-ON-OFF-ON.

4 STATUS MENU

- The status menu will appear. Wait until it's completed.

NOTE: If unsuccessful, the "Failed to Add" screen will appear. Close the app and repeat the previous steps. If successful, continue to step 5.



5 NAMING DEVICES

- To name the bulb(s) tap the Pen icon, enter the new name and tap Done. The bulb(s) is now ready to be controlled with the Feit Electric App.



For full user guide and setup instructions, please visit www.feit.com

200mm