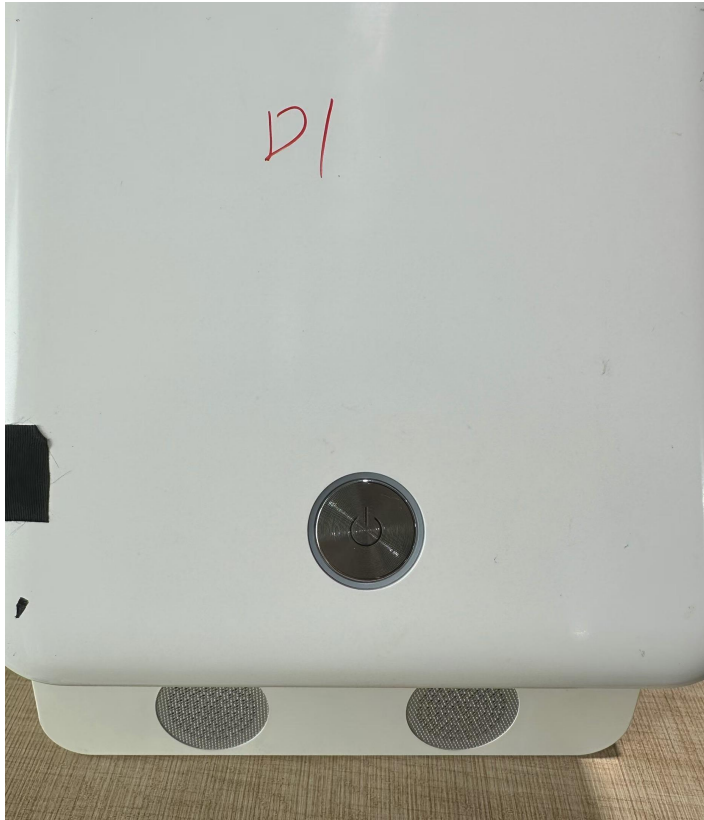
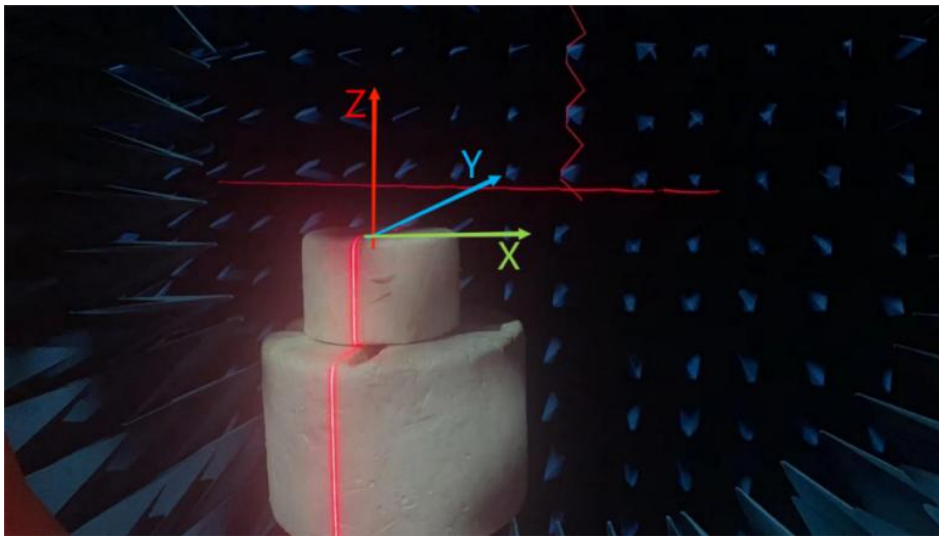
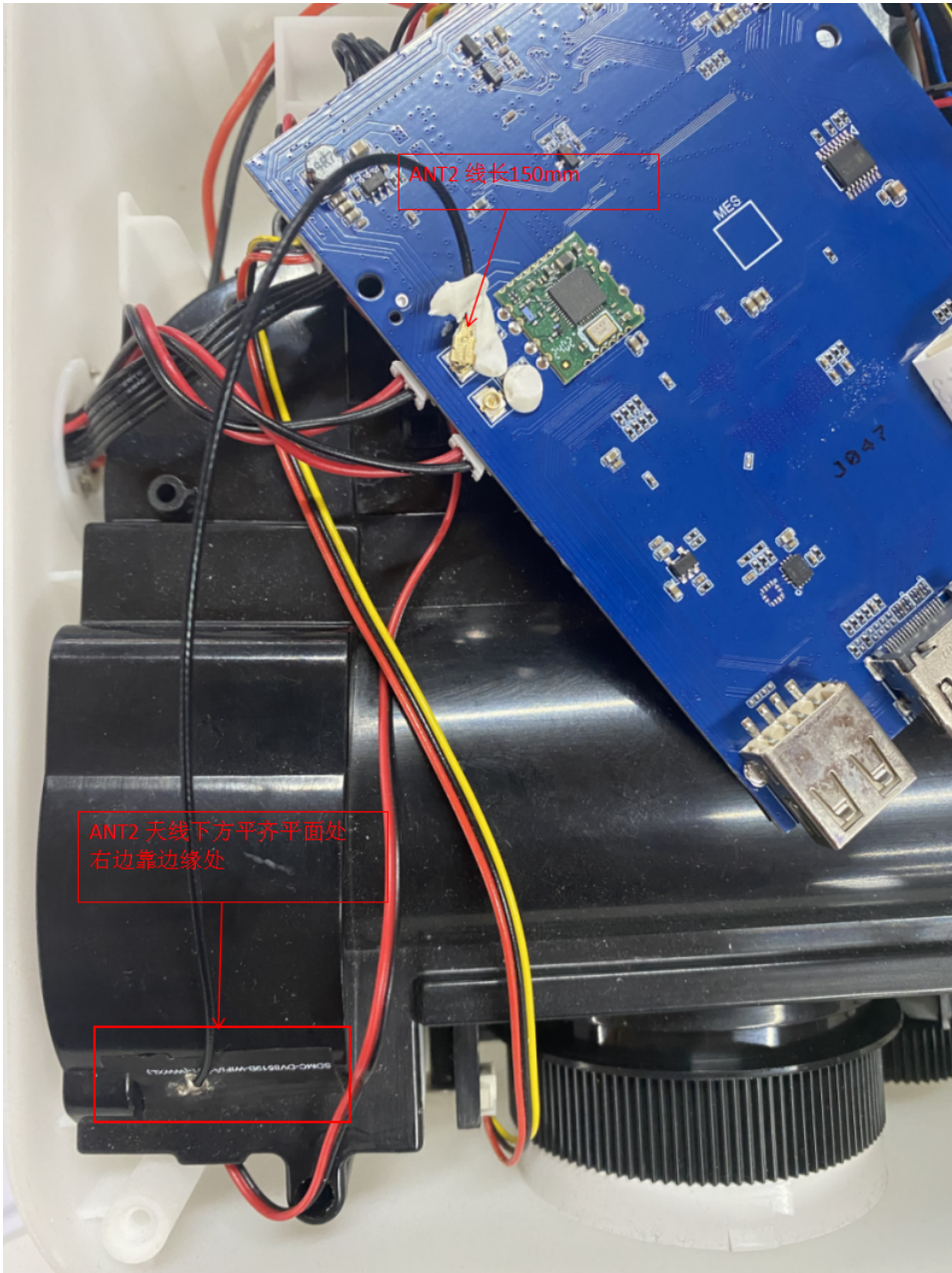


投影仪设备 WIFI 天线调试数据报告

项目名称	JY9269E-D1
芯片型号	Cdtech (B1A1880-11)
天线形式	FPC
报告日期	2024/12/4

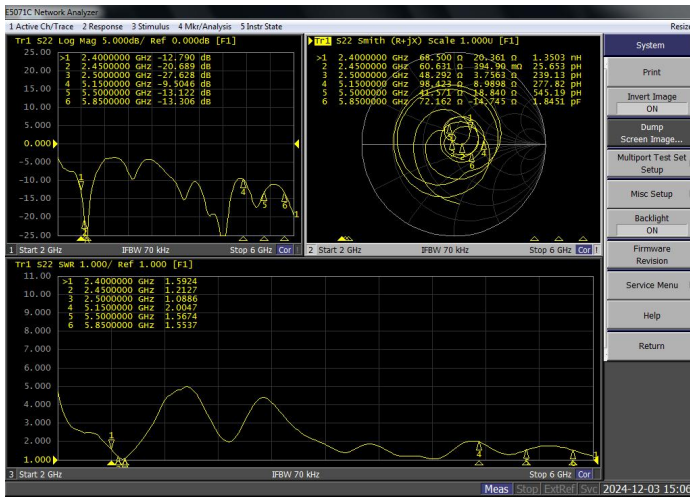
一、天线及测试环境图 Antenna and test environment diagram





二、天线驻波比 Antenna standing wave ratio

ANT



三、无源效率 Passive efficiency

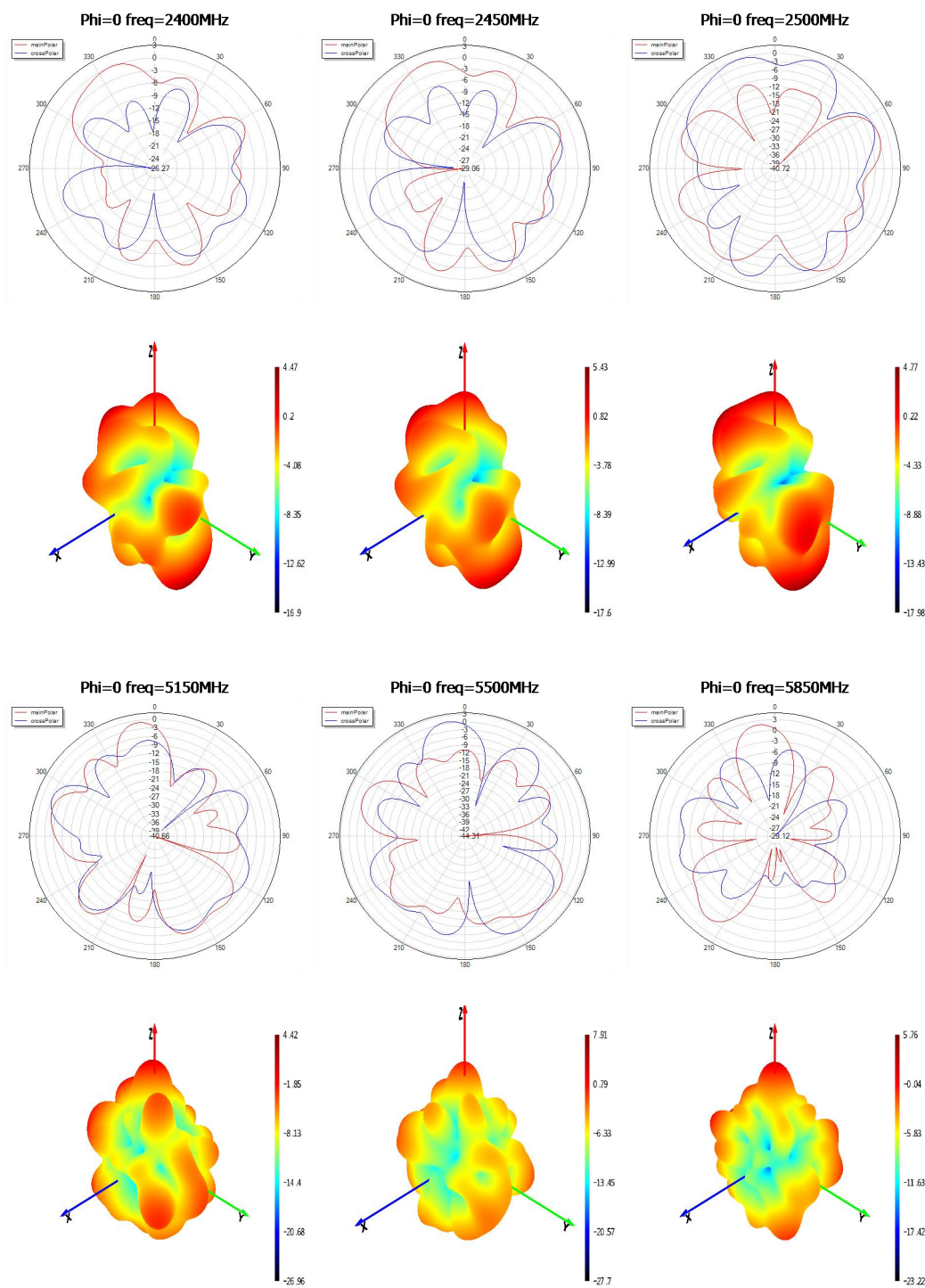
ANT

Gain&Efficiency&PhaseCenter 增益、效率和相位中心						
Frequency 频率(MHz)	Gain 增益(dBi)	MinGain 最小增益 (dBi)	CO Gain 主极化最 大增益 (dBi)	CP Gain 交叉极化 最大增益 (dBi)	Efficiency 效率(dB)	Efficiency 效率(%)
2400.00	4.47	-16.90	3.72	3.21	-2.44	57.06
2410.00	4.70	-16.37	3.88	3.28	-2.43	57.15
2420.00	4.90	-15.90	4.02	3.73	-2.12	61.32
2430.00	5.04	-16.47	4.09	3.42	-2.13	61.21
2440.00	5.29	-16.63	4.32	3.77	-2.04	62.54
2450.00	5.43	-17.60	4.45	4.06	-1.70	67.54
2460.00	5.32	-18.78	4.34	3.77	-2.09	61.87
2470.00	5.22	-19.19	4.28	3.92	-1.75	66.80
2480.00	5.45	-18.30	4.48	4.36	-1.54	70.20
2490.00	4.94	-17.89	4.36	4.00	-1.60	69.26
2500.00	4.77	-17.98	4.10	3.78	-1.65	68.33

Gain&Efficiency&PhaseCenter 增益、效率和相位中心						
Frequency 频率(MHz)	Gain 增益(dBi)	MinGain 最小增益 (dBi)	CO Gain 主极化最 大增益 (dBi)	CP Gain 交叉极化 最大增益 (dBi)	Efficiency 效率(dB)	Efficiency 效率(%)
5150.00	4.42	-26.96	2.40	0.75	-3.70	42.66
5200.00	4.74	-26.20	2.29	1.50	-3.90	40.78
5250.00	5.63	-33.13	2.98	2.70	-3.70	42.61
5300.00	5.66	-33.18	3.44	2.38	-4.07	39.22
5350.00	5.60	-27.41	3.58	1.91	-4.31	37.08
5400.00	5.56	-29.56	3.40	2.27	-4.55	35.06
5450.00	6.90	-29.41	4.64	3.68	-3.93	40.50
5500.00	7.91	-27.70	5.41	4.86	-3.67	42.95
5550.00	7.46	-33.56	4.94	4.33	-4.38	36.43
5600.00	7.23	-28.96	4.75	4.22	-4.56	35.01
5650.00	8.43	-28.24	6.40	5.05	-3.46	45.04
5700.00	8.27	-24.43	6.28	5.04	-3.50	44.72
5750.00	7.64	-30.52	5.95	4.22	-3.72	42.42
5800.00	7.24	-25.14	5.50	4.26	-3.79	41.81
5850.00	5.76	-23.22	4.33	4.32	-4.39	36.43

四、2D3D 方向图 2D3D orientation map

ANT



五、有源数据 Active data

Test mode: 802.11b 11Mbps BW 20M

Test	Wifi 2G TRP			Test	Wifi 2G TIS		
CH	1	6	11	CH	1	6	11
Frequency (MHz)	2412	2437	2472	Frequency (MHz)	2412	2437	2472
TRP(dBm)	15.68	17.28	17.84	TIS(dBm)	-81.16	-84.16	-84.41

Test mode: 802.11a 54Mbps BW 20M

Test	Wifi 5G TRP			Test	Wifi 5G TIS		
CH	36	100	161	CH	36	100	161
Frequency (MHz)	5180	5500	5825	Frequency (MHz)	5180	5500	5825
TRP(dBm)	14.21	13.78	11.4	TIS(dBm)	-72.88	-71.78	-71.16

六、吞吐量测试 Throughput testing

40M	2.4G-WIFI		
Band	信道	TX	RX
B 模	1	87.5	87
	6	81.4	80.8
	11	81.1	87.9

80M	5.8G-WIFI		
Band	信道	TX	RX
A 模	36	223.5	221.6
	100	227.9	222.5
	161	225.1	225.7

Band	angle	信道					
		1		6		11	
		TX	RX	TX	RX	TX	RX
2.4G/B 模	0	83.5	82.9	76.4	75.7	81.9	83.8
	30	91.7	91.1	85.4	84.7	83.1	92.0
	60	90.9	90.3	79.5	78.8	80.1	91.2
	90	85.0	84.4	81.2	80.5	79.1	85.3
	120	90.1	89.5	79.3	78.6	80.9	90.4
	150	88.5	87.9	86.3	85.6	82.8	88.8
	180	83.6	83.0	82.3	81.6	80.2	83.9

Band	angle	信道					
		36		100		161	
		TX	RX	TX	RX	TX	RX
5.8G/A 模	0	225.4	221.8	229.8	221.2	227.0	224.3
	30	220.9	222.8	227.4	221.9	224.6	225.0
	60	225.2	223.1	229.5	221.8	226.7	224.9
	90	225.0	214.2	227.3	223.5	224.5	226.6
	120	225.4	223.4	228.5	221.8	225.7	224.9
	150	223.1	223.3	227.4	224.4	224.6	227.5
	180	220.1	223.6	225.7	223.5	222.9	226.6

深圳市万物相连通讯有限公司

2024.12.4