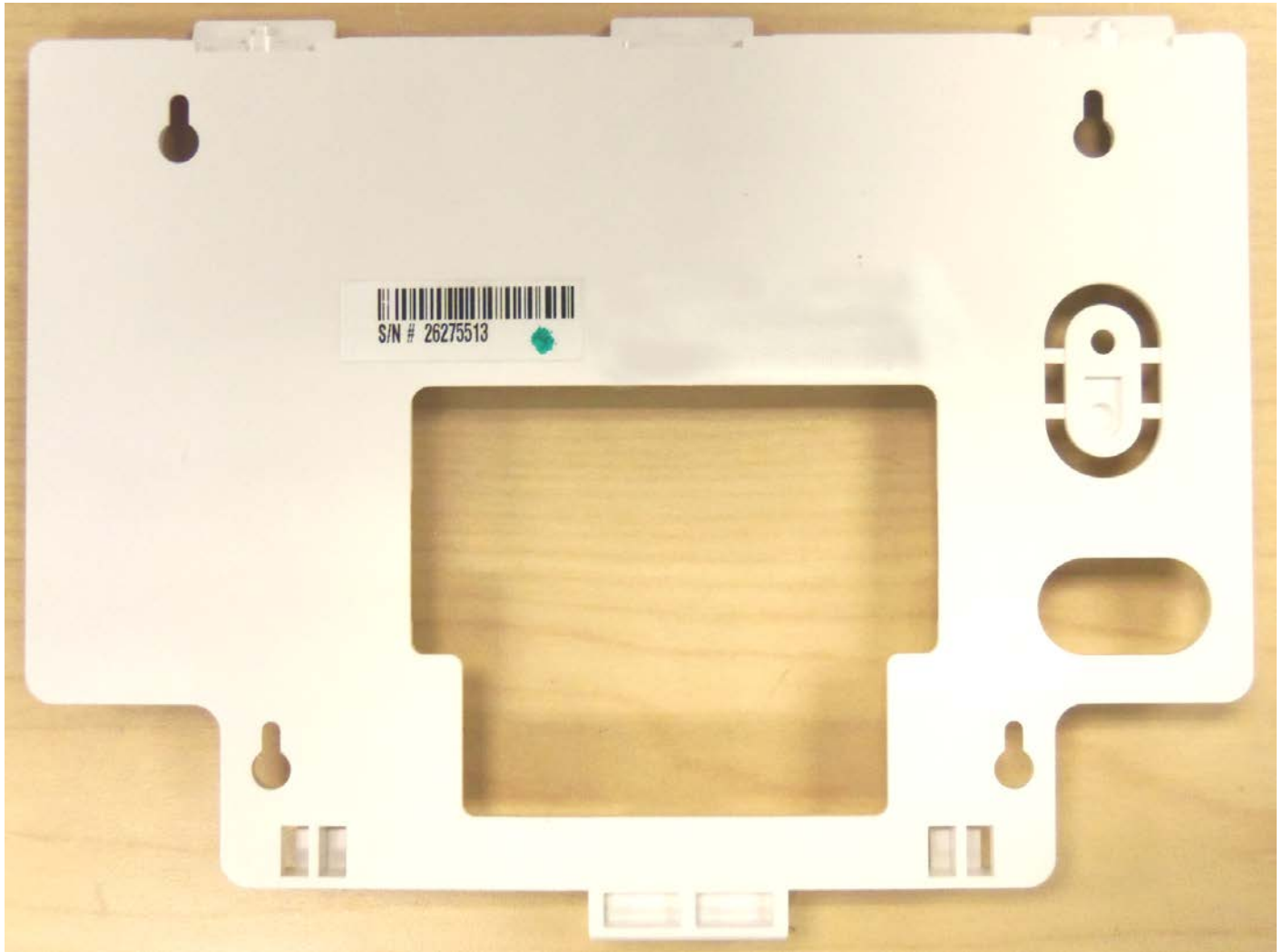


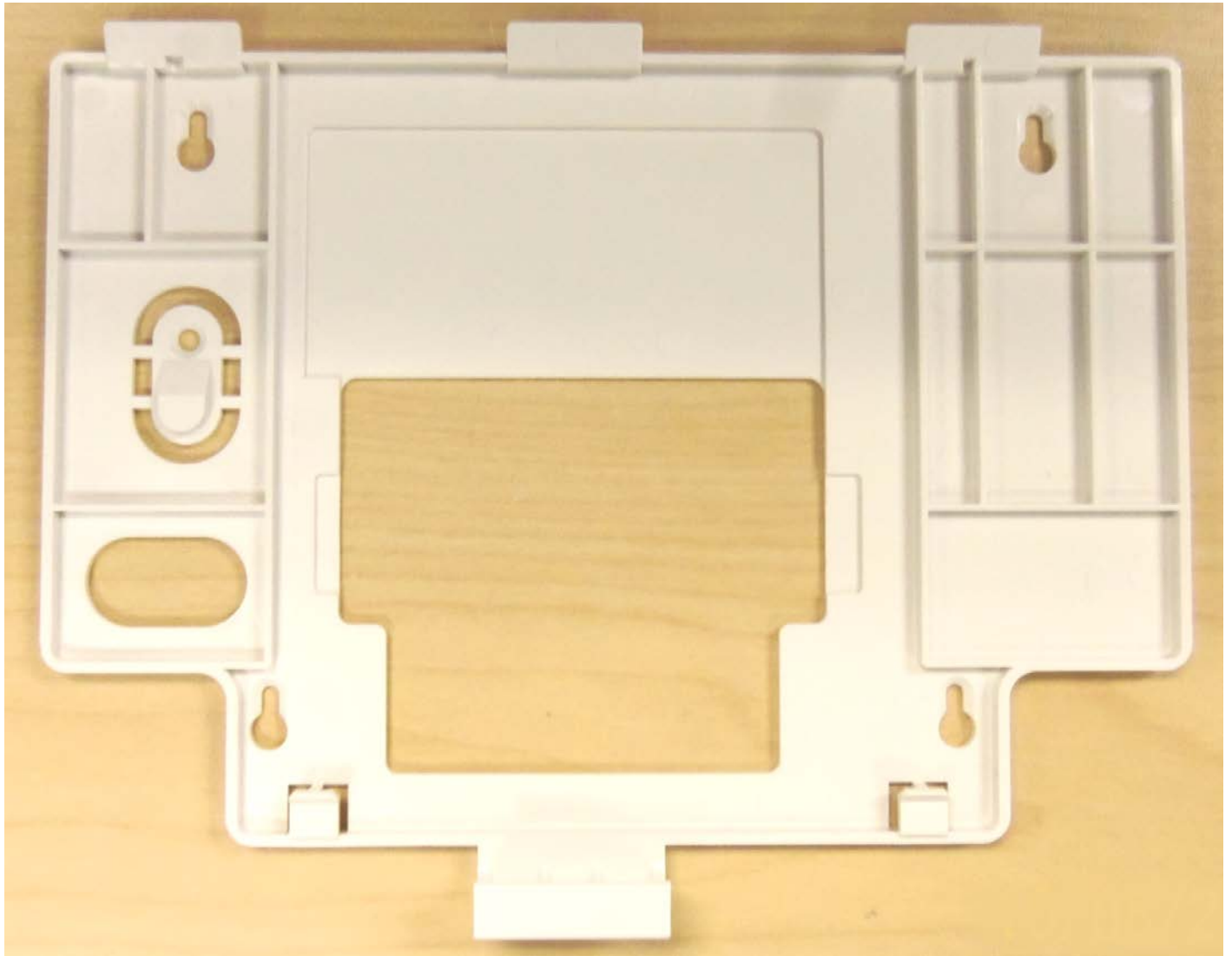
**INTERNAL PHOTOS**

**WALL MOUNT - EXTERIOR FACE**



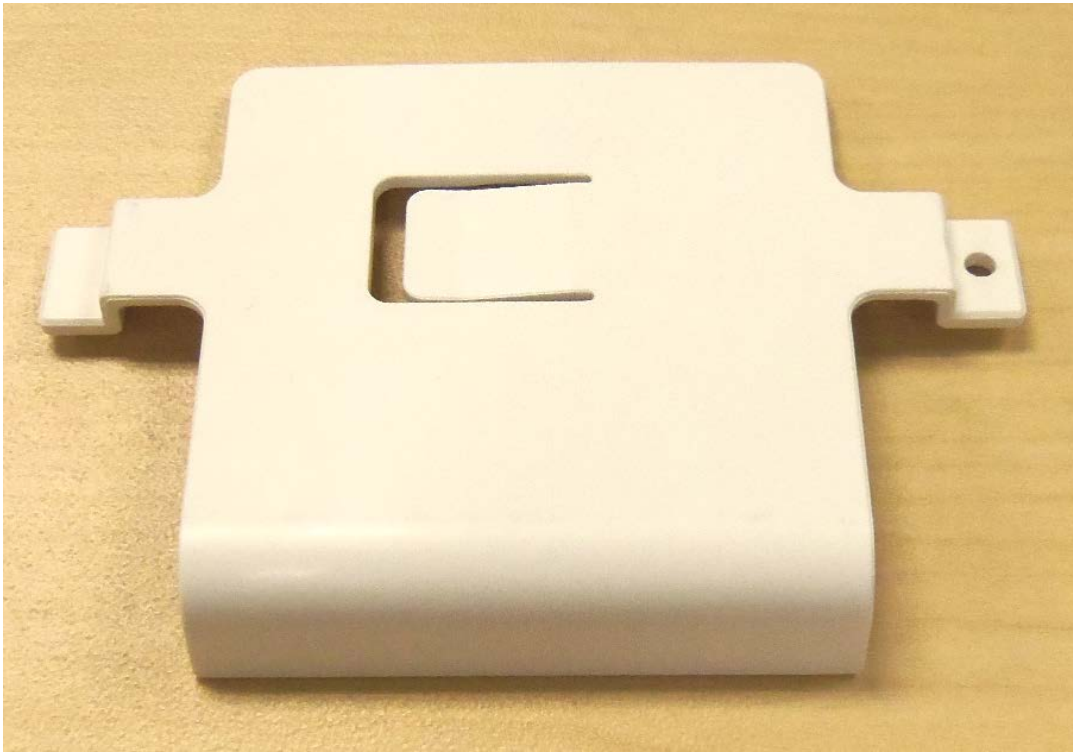
**INTERNAL PHOTOS CONT.**

**WALL MOUNT - INTERIOR FACE**

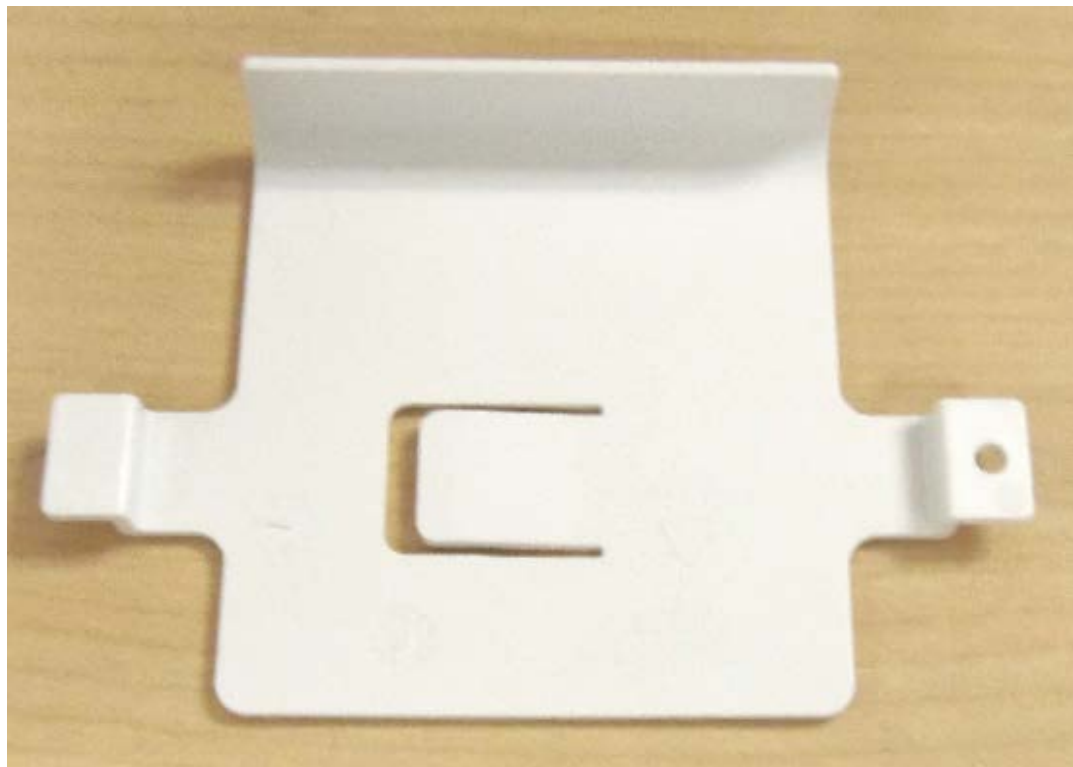


**INTERNAL PHOTOS CONT.**

**BATTERY HOLDER - OUTSIDE**



**BATTERY HOLDER - INSIDE**



**INTERNAL PHOTOS CONT.**

**BATTERY PACK TOP**



**BATTERY PACK BOTTOM**



**INTERNAL PHOTOS CONT.****CELLULAR CARTRIDGE DOOR**

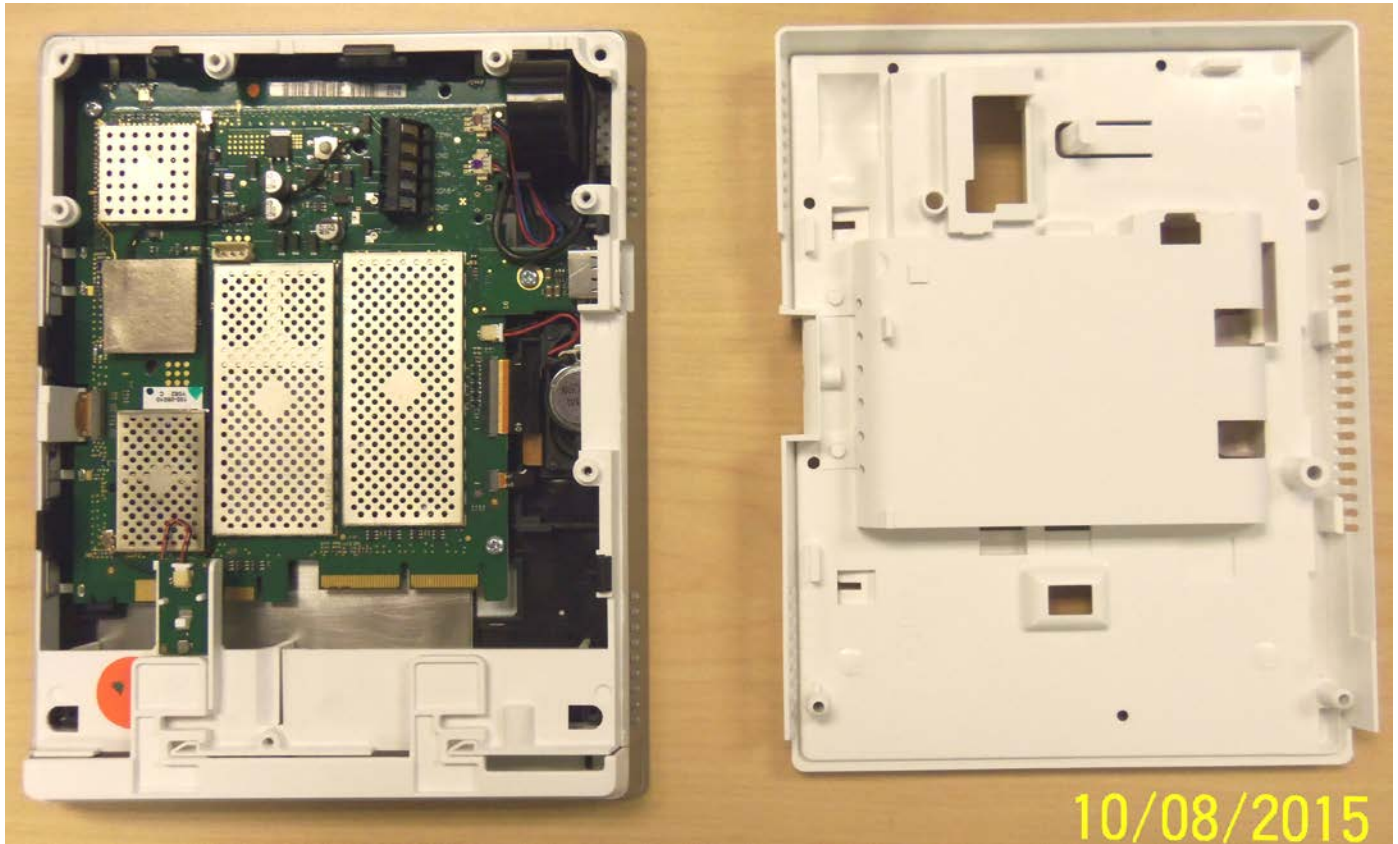
DOOR IS ON  
EDGE OF  
CONSOLE





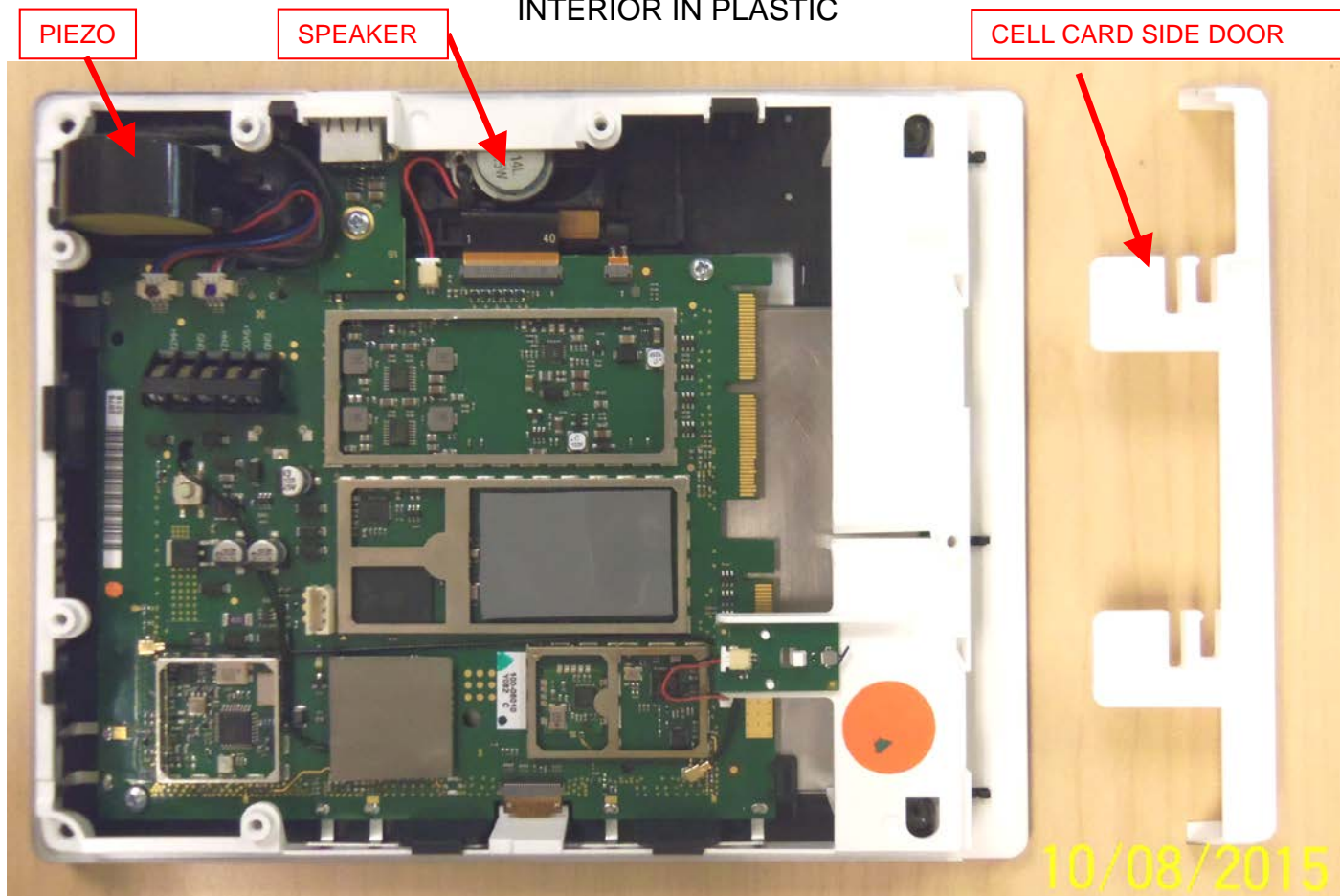
**INTERNAL PHOTOS CONT.**

**CASE BACK REMOVED**



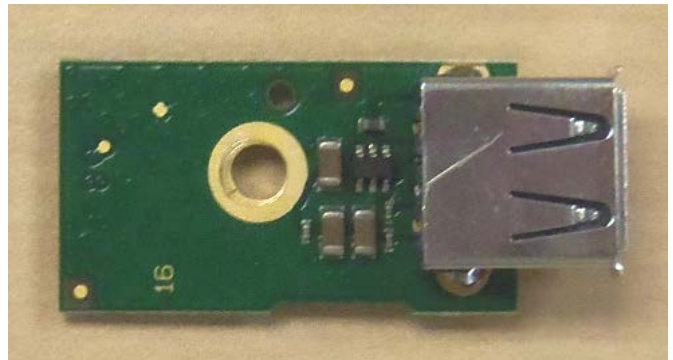
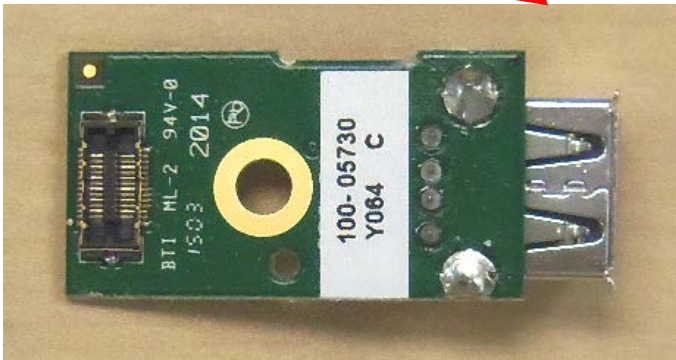
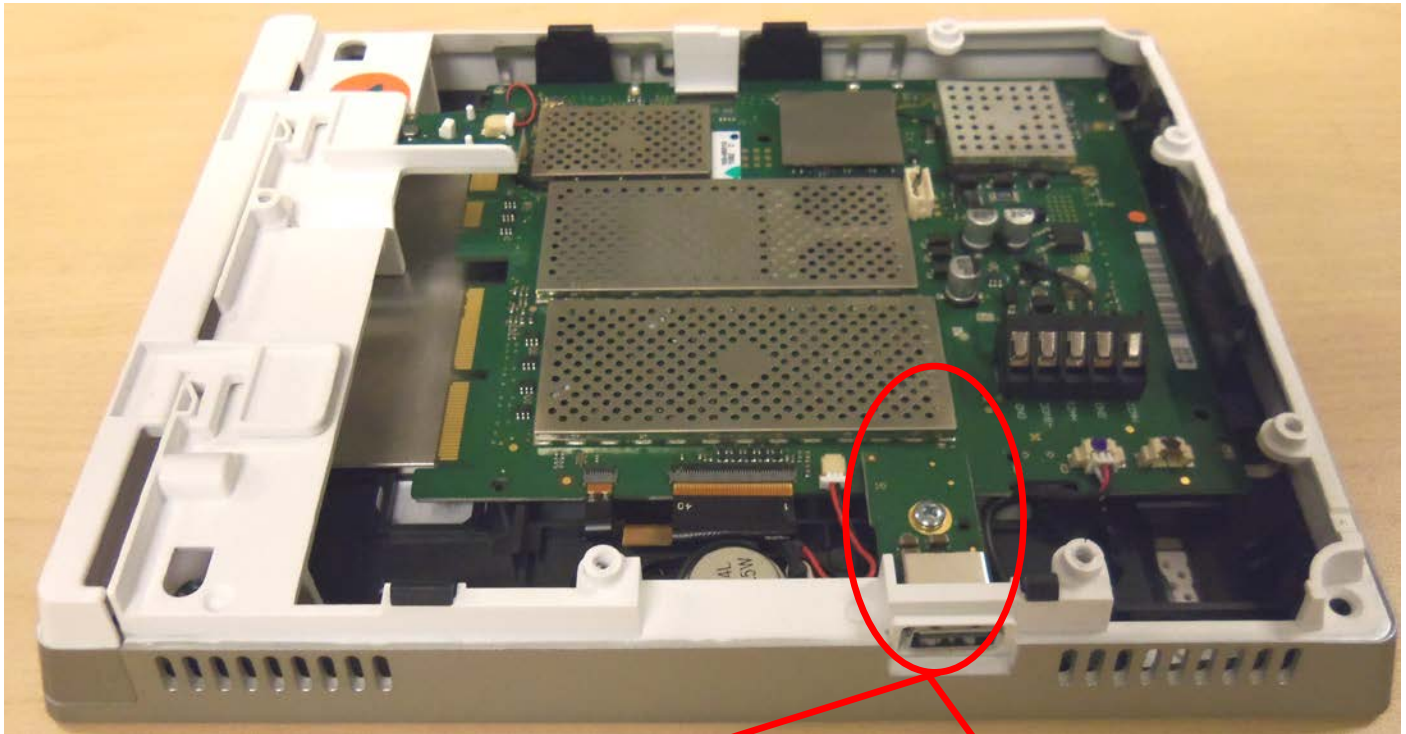
**INTERNAL PHOTOS CONT.**

INTERIOR IN PLASTIC



**INTERNAL PHOTOS CONT.**

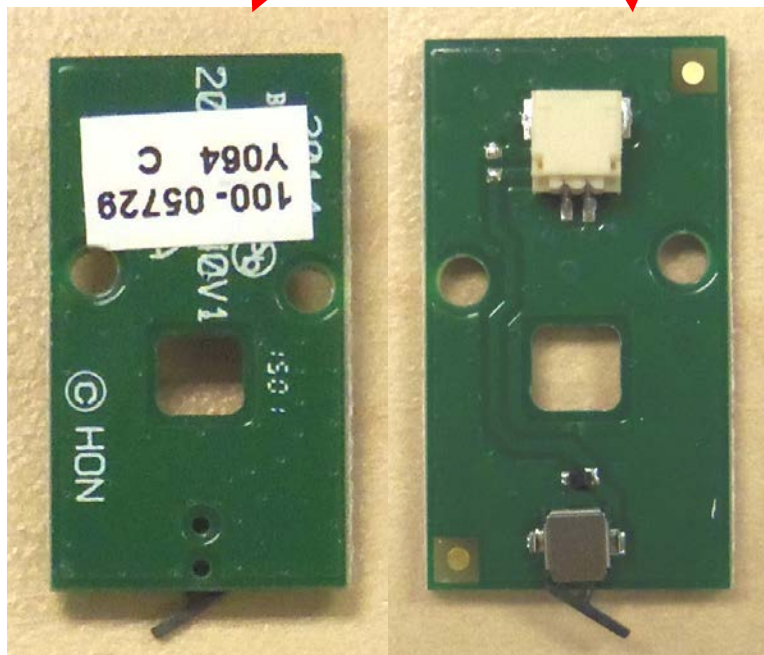
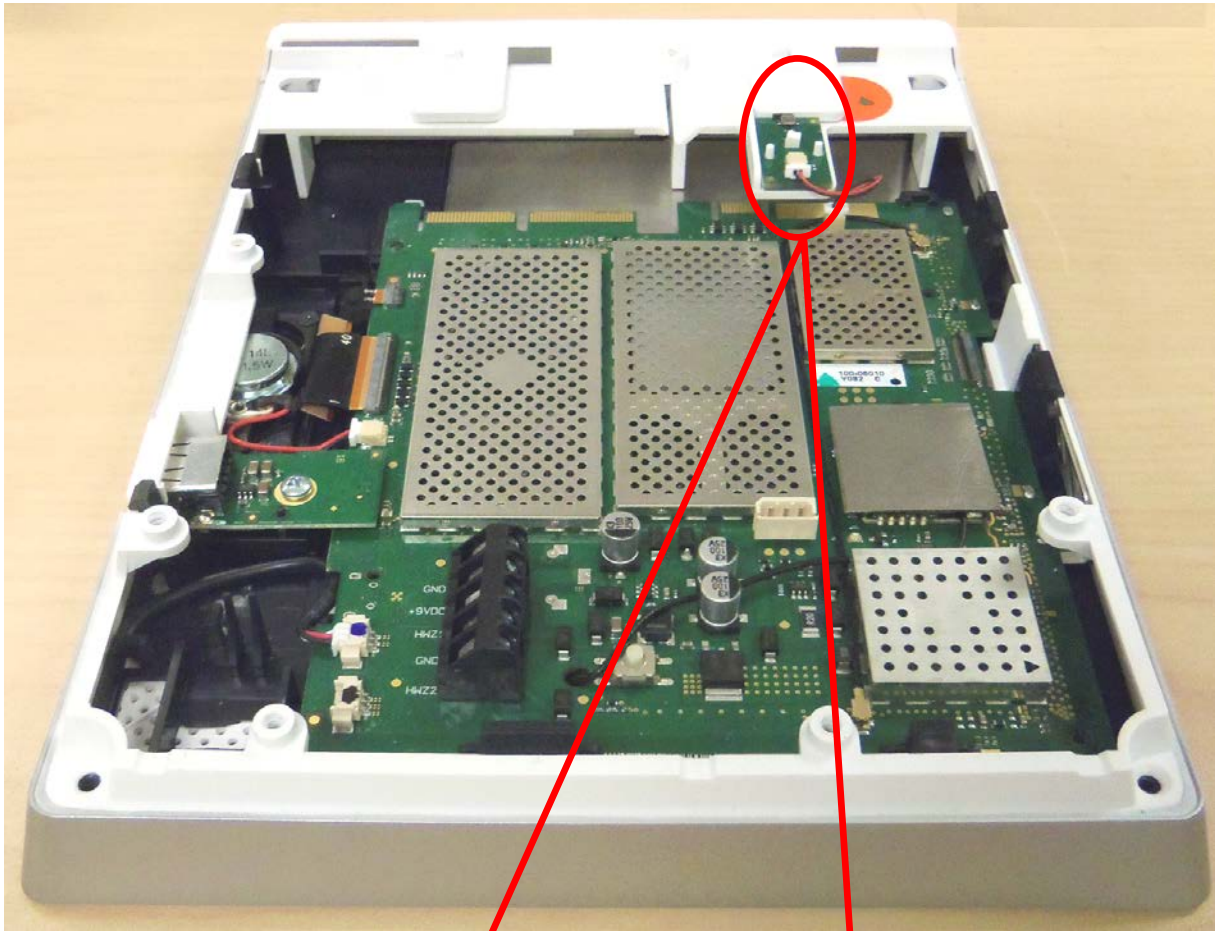
**USB BOARD**





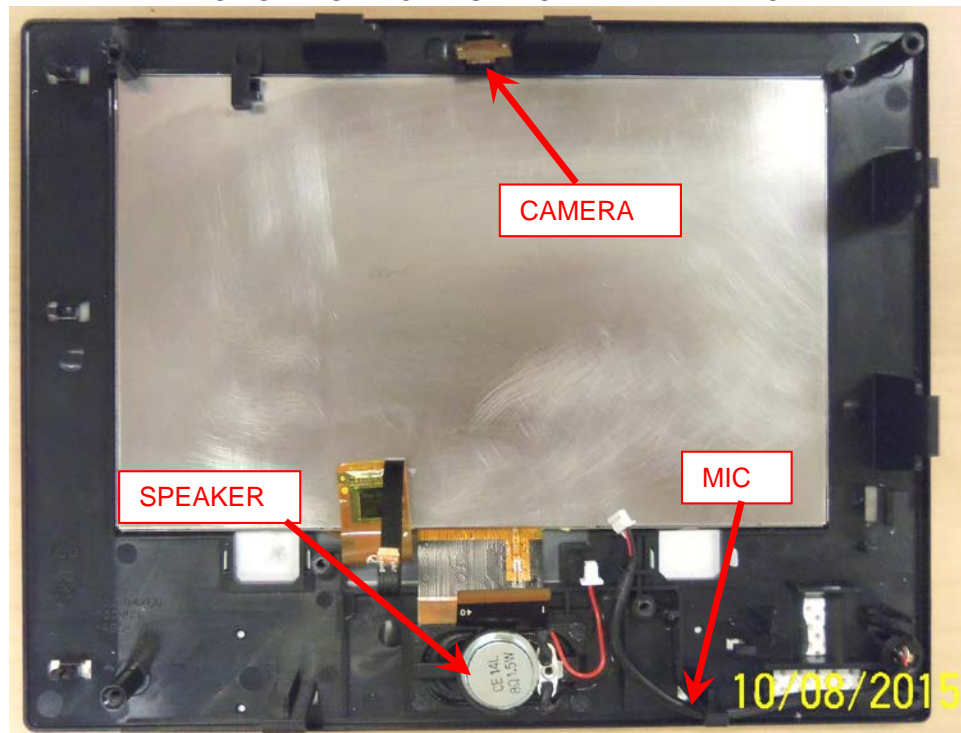
INTERNAL PHOTOS CONT.

TAMPER BOARD

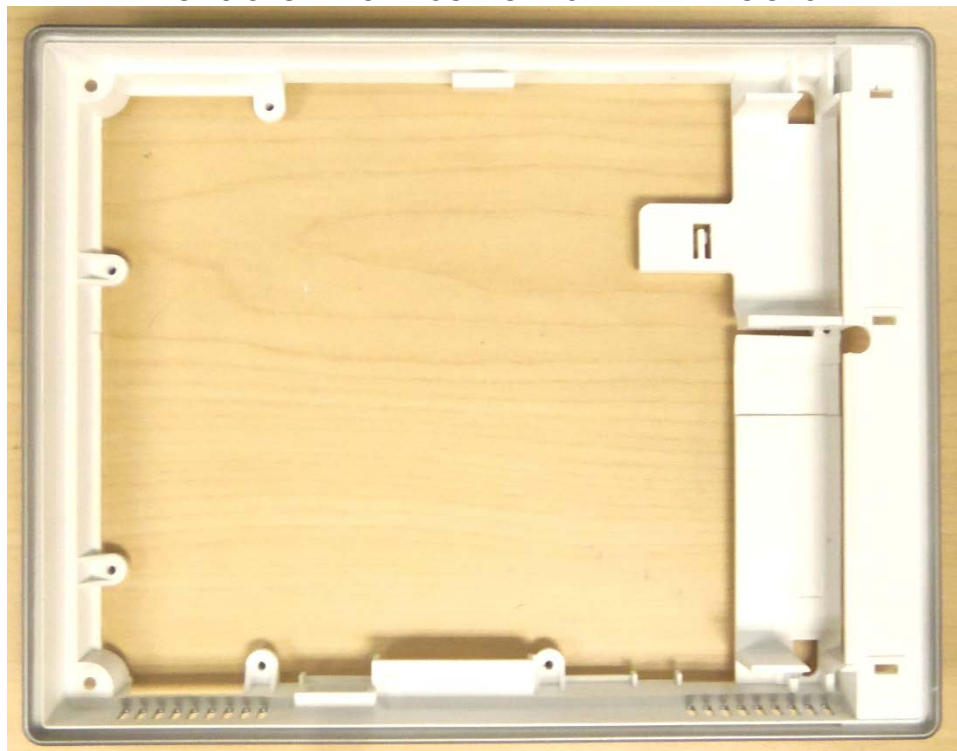


**INTERNAL PHOTOS CONT.****INSIDE OF CASE-FRONT**

- LCD ADHERES TO BEZEL
- PCB SNAPS INTO THIS PIECE BEHIND THE LCD

**CENTER PIECE**

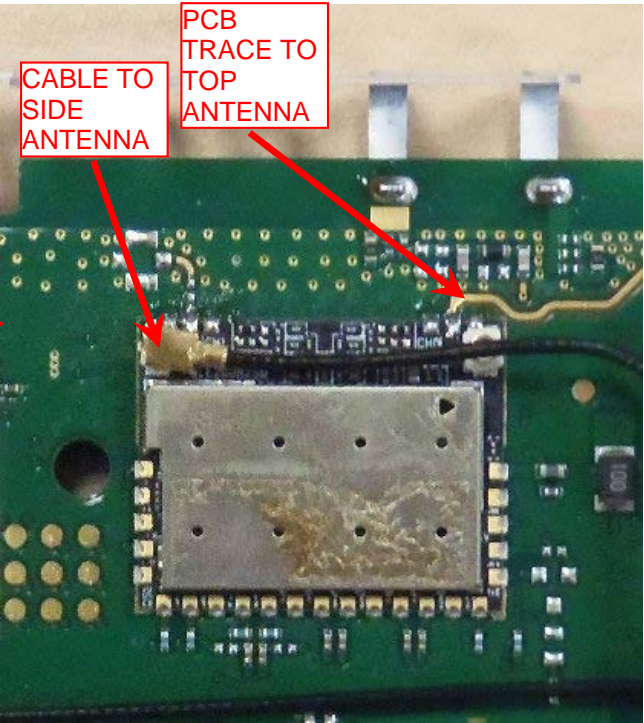
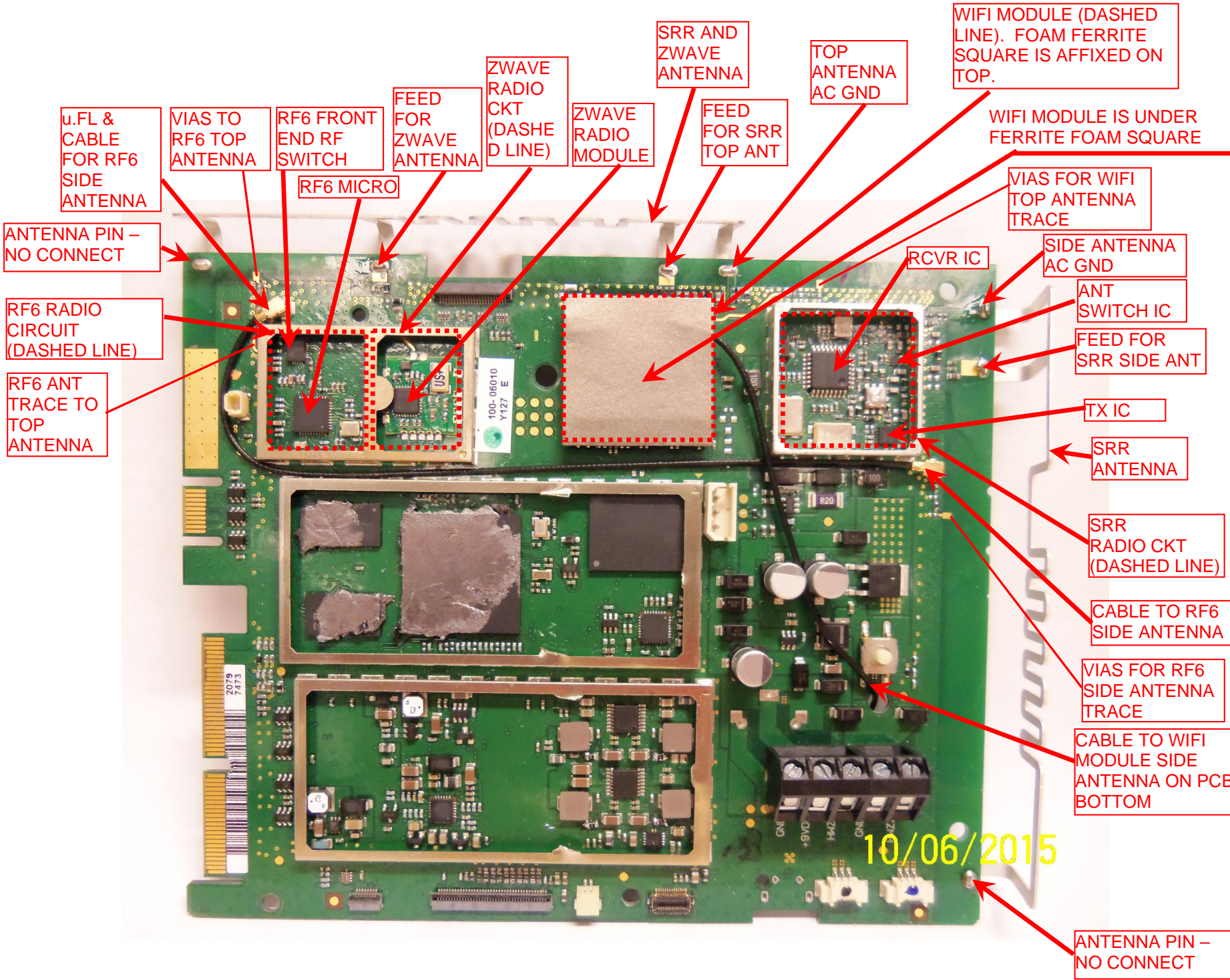
- CASE FRONT (ABOVE) FLIPS HORIZONTALLY AND DROPS IN
- PLASTIC CASE BACK MOUNTS FROM BEHIND AS SHOWN



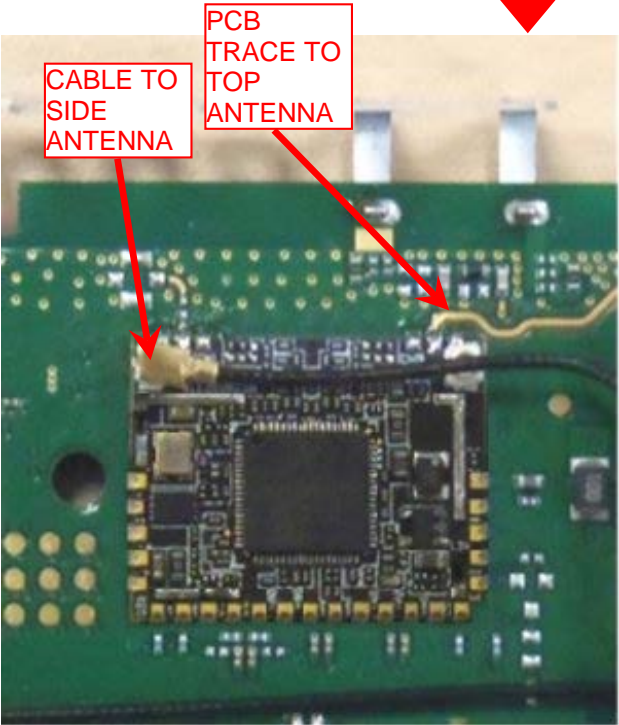


INTERNAL PHOTOS CONT.

PCB TOP



WIFI MODULE CLOSE-UP. FOAM FERRITE SQUARE IS REMOVED, EMI SHIELD IS PRESENT.



WIFI MODULE CLOSE-UP. FOAM FERRITE SQUARE IS REMOVED, EMI SHIELD IS REMOVED TO SHOW MODULE COMPONENTS.



## INTERNAL PHOTOS CONT.

## PCB BOTTOM

- SPRING TABS ON GROUND RING MOUNT AGAINST LCD

