

APPENDIX I  
: USER'S MANUAL

# MX-3000

Color Touch Screen



Owners Manual



**HOME THEATER MASTER®**  
Entertainment Made Simple™

*This remote control was  
Custom Programmed for you by:*

.....

*For questions about your Custom  
Programming call:*

.....

*Custom Programming of a complex home theater and/or a  
multi-room system is one of the most challenging tasks  
within an audio/video installation. It involves an intimate  
knowledge of how the components interact and exact details  
on the proper sequences of control.*

*Only a Home Theater Master dealer has the requisite  
experience and training to quickly and effectively customize a  
remote control for true automated operation.*

*Congratulations on your choice!*

*MX-3000 Owners Manual © 2004 Universal Remote Control, Inc.*

*The information in this manual is copyright protected. No part of this manual may  
be copied or reproduced in any form without prior written consent from Universal  
Remote Control, Inc.*

*UNIVERSAL REMOTE CONTROL, INC. SHALL NOT BE LIABLE FOR OPERATIONAL,  
TECHNICAL OR EDITORIAL ERRORS/OMISSIONS MADE IN THIS MANUAL.*

*The information in this manual may be subject to change without prior notice.*

*Home Theater Master is a registered trademark of Universal Remote Control, Inc.  
Entertainment Made Simple is a trademark of Universal Remote Control, Inc.*

*All other brand or product names are trademarks or registered trademarks of their  
respective companies or organizations.*



500 Mamaroneck Avenue, Harrison, NY 10528  
Phone: (914) 835-4484 Fax: (914) 835-4532

## TABLE OF CONTENTS

Congratulations	1
Connecting the Battery Pack	1
Using the Charging Base	2
Programming the MX-3000	2
No More Pointing!	3
Operating Your System	4
Displaying the Settings Screen	5
Adjusting Backlighting	5
Adjusting Brightness	5
Button Light Settings	5
Sound	6
Setting Time and Date	6
Power Settings	6
System	6
Pickup Settings	7
Calibration	7
Factory Default	7
Exit	7
Maintaining Your MX-3000	8
Warranty	8
Specifications	8
Information To The User	9
Warning	9

## Congratulations

You've purchased a unique synthesis of hardware and software engineering, the Home Theater Master MX-3000. The twin goals of the design team were to improve the elegance and usability of touch screens through the physical design while providing a new standard in brightness, clarity and animation for the touch screen itself.



## Easy Operation

By assigning the important home theater operational buttons to the natural resting place of the end users thumbs, the MX-3000 achieves a new standard in use and comfort.

## Automatic Backlighting

The integral motion sensor detects any movement of the touch screen and automatically backlights the screen. You do not have to press any button to display the screen. Any movement of the MX-3000 renews the backlighting. To adjust the backlighting, see page 5.

## Connecting the Battery Pack

Unlock the rear cover by using a coin to move the locking screw to the Unlock position.

Remove the cover. For shipment from the factory, the battery cable is left unplugged. Plug the cable into the socket next to the battery. The connector is slotted to prevent plugging it in the wrong way, so don't force it.

Replace the cover and lock it into place with a coin.



Locked



Un-Locked



Battery Cable Plugged In

## Using the Charging Base

---

Plug the 5V DC adapter into a power outlet and into the back of the charging base.

Gently place the MX-3000 into the cradle of the charging base.

Push down on the base of the MX-3000 until you hear and feel a firm “click”.

The Status light should immediately light. Red indicates that it is charging. Blue shows that it is fully charged. There is no harm in leaving the MX-3000 on its charging base whenever it is not in use.



The MX-3000 on it's Charging Base.

## Programming the MX-3000

---

The MX-3000 is programmed via a windows PC equipped with a USB port (we include a programming cable in the box), using our proprietary software, MX-3000 Editor. You can download this software from our website:

[www.universalremote.com](http://www.universalremote.com)

Basic setup takes only a few minutes with this software. However, to fully automate an audio/video system the user must have a detailed knowledge of how the system is connected and operated. We highly recommend that you use a professional audio/video installer to program your MX-3000 if you would like to enjoy one touch operation via macros.

## No More Pointing!

The combination of the MX-3000 with it's companion MRF-250 base station will enable you to place your audio/video components out of sight behind closed doors and/or in another room of your house. The MX-3000 sends radio signals to the MRF-250 throughout your house (50-100' away, indoors or outdoors). The MRF-250 converts your commands to the infrared signals that control your A/V components.

1. The MX-3000 remote control sends radio waves in every direction, so you don't have to point the remote anymore!



2. The MRF-250's built-in Front Blaster sends commands to components in the same cabinet space as the MRF-250.



3. Self-adhesive "Flashers" affix to the Infrared sensors on the front panels of your components. The Flashers relay commands to components out of sight of the MRF-250's Front Blaster. The flashers plug in to the MRF-250's rear flasher line outputs via their 10 foot cables.

## Operating Your System

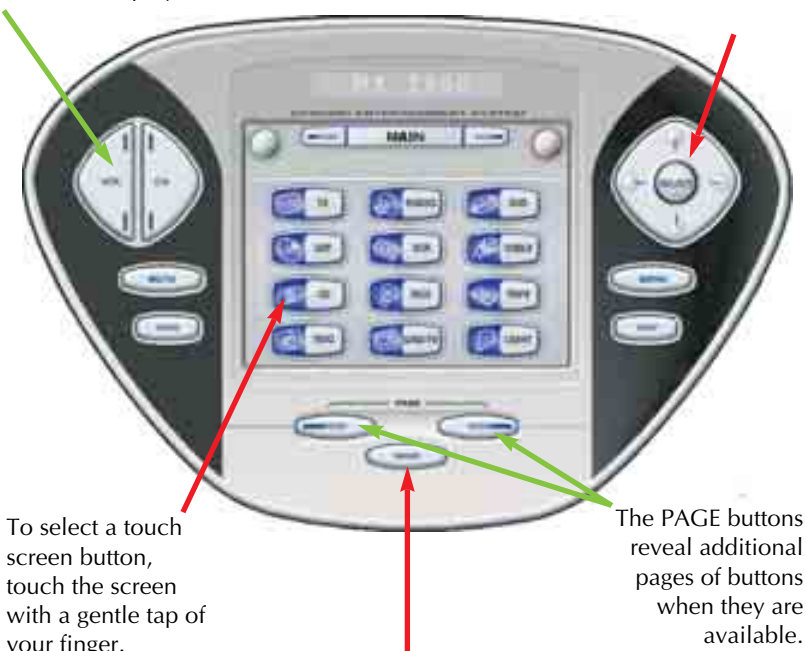
The MX-3000's MAIN menu displays the most popular activities and devices in your system. Press the MAIN button to see the MAIN menu. Large systems may have more than one page. Press the page button if you don't see all your devices.

Gently press any screen button with your finger to select an activity or a device. The screen will change to a display of the buttons you need for that activity/device. The PAGE buttons may reveal additional buttons for some devices and activities.

When you would like to control another device, press the MAIN button and select a new device from the MAIN menu.

The Volume and Mute buttons are always available regardless of what screen is displayed.

The 4 way cursor buttons enable you to navigate on screen guides and menus with ease.



To select a touch screen button, touch the screen with a gentle tap of your finger.

The PAGE buttons reveal additional pages of buttons when they are available.

The MAIN Button below the screen always takes you to the first page of the MAIN Menu.



## Displaying the Settings Screen

You can adjust the settings of the MX-3000 whenever you like by pressing and holding the MAIN button for five seconds. When you do, the screen will change to the SETTINGS screen. If you do not press any button on the SETTINGS screen within 30 seconds, the MX-3000 will time out and automatically return to normal operation.



The Settings Screen

## Adjusting Backlighting

If you uncheck the check boxes, the MX-3000 will stay lit until the battery is exhausted. If you check the check boxes, you can select from the list of delays. The amount of delay you select will be the how long the MX-3000 stays lit. You can save battery life this way.



The Backlight Screen

## Adjusting Brightness

Simply touch and drag the brightness slider to the desired level. Increased brightness does affect battery life.

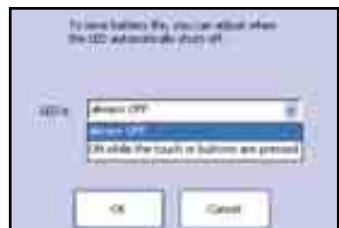


The Brightness Screen

## Button Light Settings

You can opt to conserve battery life, by disabling the LED lighting behind the buttons.

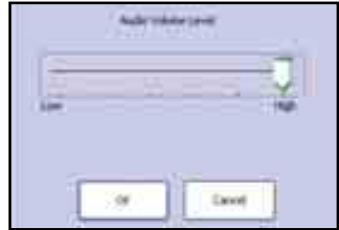
This is done by pulling down the list box and selecting "always off" from the list.



The Button Light Screen

## Sound

Your MX-3000 may have been programmed to make sounds. This is optional, and some professional installers may prefer to keep it silent. However, you can adjust the volume to any level you like by touching and dragging the volume control here.



The Sound Screen

## Setting Time and Date

Your MX-3000 may have been programmed to display the time or date on a touch screen button. If so, you can correct the time displayed by changing the settings on this screen.



The Time and Date Screen

## Power Settings

You can display the remaining charge by selecting Power Settings.

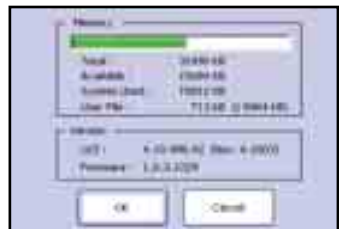
You can also adjust when the low battery warning screen will appear.



The Power Screen

## System

The System screen displays data about your MX-3000's operating system, memory etc.



The System Screen

## Pickup Settings

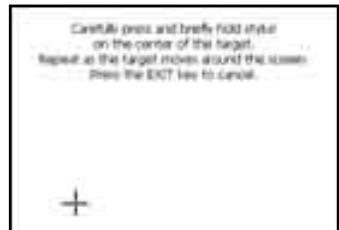
You can set your MX-3000 to only turn on when touched, or every time you move it.



The Pickup Screen

## Calibration

If you like, you can calibrate where you tap by running the calibration. You will need a pen top or PDA stylus to do this. Do not attempt to calibrate using your fingers.



The Calibration Screen

## Factory Default

**WARNING!** Only use this button when instructed to by Technical Support. It resets the memory of the MX-3000 to the factory condition. All your programming will be lost!



The Default Screen

## Exit

When you have finished adjusting Settings, simply tap the EXIT button to return to normal operation.



The Exit Button

## Maintaining Your MX-3000

---

Be careful not to scratch the touch screen, only use your finger to tap the LCD touch screen or use a plastic pen top or PDA stylus. Never use a real pen, pencil or any other sharp object on the screen. Keep it away from extreme cold or heat. The MX-3000 is not waterproof. Do not use it in any location that is damp or wet.

If you spill water on it, take out the battery pack and let the MX-3000 dry for 48 hours before you try powering it up again. If you spill coffee or another beverage on it, clean it with distilled water. Make sure no water gets inside the MX-3000. The touch screen contains a glass element. Don't drop the MX-3000 or impact it against anything.

Use a soft, damp cloth to clean the screen. If the screen still shows finger prints, clean it with watered down window-cleaner. Do not use anything abrasive and don't use too much water, some might leak into the interior.

## Warranty

---

The MX-3000 is covered against any manufacturing defects or faults in workmanship for a period of one year from the date of purchase when purchased from an authorized Home Theater Master dealer. Units purchased from online auction sites or other unauthorized resellers have no warranty. This warranty does not cover the following items:

- ◆ Damage from misuse, neglect, or acts of nature.
- ◆ Products that have been modified or incorporated into other products.
- ◆ Products purchased more than 12 months ago.
- ◆ Units purchased from unauthorized dealers or companies.

## Specifications

---

Microprocessor: 206MHz RISC

Memory - 16 Megabytes of RAM (for User Configuration)

Devices - Supports up to 255 Devices

Pages- Supports up to 255 Pages on each Device

Learning Capability - Standard frequencies (15kHz to 100kHz)

Macro Capability - Up to 255 steps each, however nesting is allowed

IR Range (Line of Sight via Infrared): 30-50 feet, depending on the environment

RF Range (radio frequency): 50 to 100 feet, depending upon the environment

RF Frequency: 418MHz

Weight: 10.4 oz. (with batteries)

Size: 7.17" x 4.76" x 1.18"

Batteries: Lithium Ion battery pack included

## Information To The User

---

This equipment has been tested and found to comply with the limits for a Class B digital device, pursuant to part 15 of the FCC Rules.

These limits are designed to provide reasonable protection against harmful interference in a residential installation.

This equipment generates, uses and can radiate radio frequency energy and, if not installed and used in accordance with the instructions, may cause harmful interference to radio communications.

However, there is no guarantee that interference will not occur in a particular installation. If this equipment does cause harmful interference to radio or television reception, which can be determined by turning the equipment off and on, the user is encouraged to try to correct the interference by one more of the following measures:

- Reorient or relocate the receiving antenna.
- Increase the separation between the equipment and receiver.
- Connect the equipment into an outlet on a circuit different from that to which the receiver is connected.
- Consult the dealer or an experienced radio/TV technician for help.

## Warning

---

Changes or modifications not expressly approved by the manufacturer could void the user's authority to operate the equipment.

Note : The manufacturer is not responsible for any Radio or TV interference caused by unauthorized modifications to this equipment. Such modifications could void the user's authority to operate the equipment.



*500 Mamaroneck Avenue, Harrison, NY 10528*

*Phone: (914) 835-4484 Fax: (914) 835-4532*

[www.universalremote.com](http://www.universalremote.com)