



# SPECIFICATION

## APPLICATION FOR APPROVAL

客户名称 CUSTOMER : 深圳市美高电子有限公司  
客户案号 CS P/N : V3  
零件名称 PART NAME : M05.08.V3000002  
耀登案号 DEVE NO. : AUK02532B-WIFI1  
零件料号 PART NAME : A73283-30  
承认日期 DATE : Aug.2, 2024

客户确认:			
射频工程师	结构工程师	研发经理	产品经理
耀登电通科技(昆山)有限公司			
电气工程师	结构工程师	项目	核准
吕杰	孙涛	陈红雪	毛建军

### 总部

耀登電通科技(昆山)有限公司  
江苏省昆山市周市镇迎宾路 15 号  
TEL: 0512-57646998  
FAX: 0512-57646168

### Head Quarter

Auden Techno(KUNSHAN)CO.LTD  
NO.15 YING-BIN ROAD, LUYANGTOWN, KUNSHAN, JIANGSU  
CHINA

### 分公司:

耀登電通科技(昆山)有限公司西安分公司  
西安市 高新区 唐延南路 10 号 中兴产业园 E1-04  
TEL: 13382157879

### Branch

Auden Techno(KUNSHAN)CO.LTD. Xi 'an branch  
E1-04, zhongxing industrial park, no.10 tangyan south road,  
high-tech zone, xi 'an

耀登電通科技(昆山)有限公司深圳分公司  
地址: 深圳市南山区桃源街道红花岭工业区第五区 A 栋二楼  
201-202 (南区)  
TEL: 185 8845 5257

Auden Techno(KUNSHAN)CO.LTD. Shenzhen branch  
Address: 201-202, 2nd floor, building A, zone 5, honghualing  
industrial zone, taoyuan street, nanshan district, shenzhen  
(southern district)

### CONFIDENTIAL

This message contains information that may be confidential and privileged. Unless you are the addressee (or authorized to receive messages for the addressee), you can not use, copy or disclose to any third party or any information contained in the message. If you have received the message in error, please advise the sender by reply e-mail and delete the message. Nothing in this message should be interpreted as a digital or electronic signature that can be used to authenticate a contract or other legal document. Thank you very much.

## INDEX

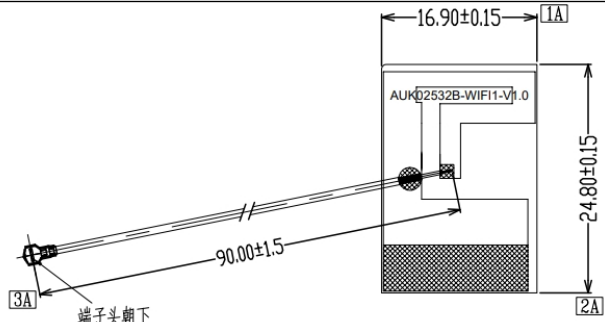
- 一、 规格书封面 (Cover)
- 二、 规格书目录 (Index)
- 三、 天线基本参数 (The Basic Parameters)
- 四、 电气测试报告 (RF Performance Test Report)
- 五、 工程图纸 (Product Drawing)
- 六、 尺寸报告 (Dimensional check reports)
- 七、 可靠性测试报告 (Reliability test report)

---

### CONFIDENTIAL

This message contains information that may be confidential and privileged. Unless you are the addressee (or authorized to receive messages for the addressee), you can not use, copy or disclose to any third party or any information contained in the message. If you have received the message in error, please advise the sender by reply e-mail and delete the message. Nothing in this message should be interpreted as a digital or electronic signature that can be used to authenticate a contract or other legal document. Thank you very much.

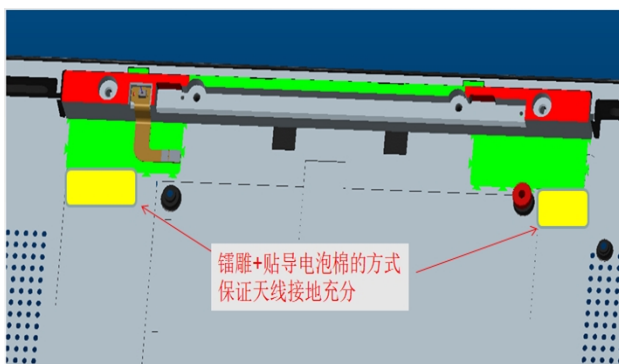
## 天线基本参数 (The Basic Parameters)

项目 (Item)	特性 (Specifications)
天线结构组成	FPC+CABLE
频率 (Frequency)	2.4g~WIFI6E
驻波比 (V. S. W. R)	$\leq 3$
增益 (Gain)	$\leq 4$
极化方式 (Polarization)	线极化
特性阻抗 (Impedance)	50 $\Omega$
塑胶材质 (Plastic material)	无
接头形式 (joint type)	4 代端子+Cable
工作温度 (Operation temperature)	-40°C to 85°C
储存温度 (Storage temperature)	-40°C to 85°C
湿度 (humidity)	Non-condensing 65°C 95% RH
天线图片	

## CONFIDENTIAL

This message contains information that may be confidential and privileged. Unless you are the addressee (or authorized to receive messages for the addressee), you can not use, copy or disclose to any third party or any information contained in the message. If you have received the message in error, please advise the sender by reply e-mail and delete the message. Nothing in this message should be interpreted as a digital or electronic signature that can be used to authenticate a contract or other legal document. Thank you very much.

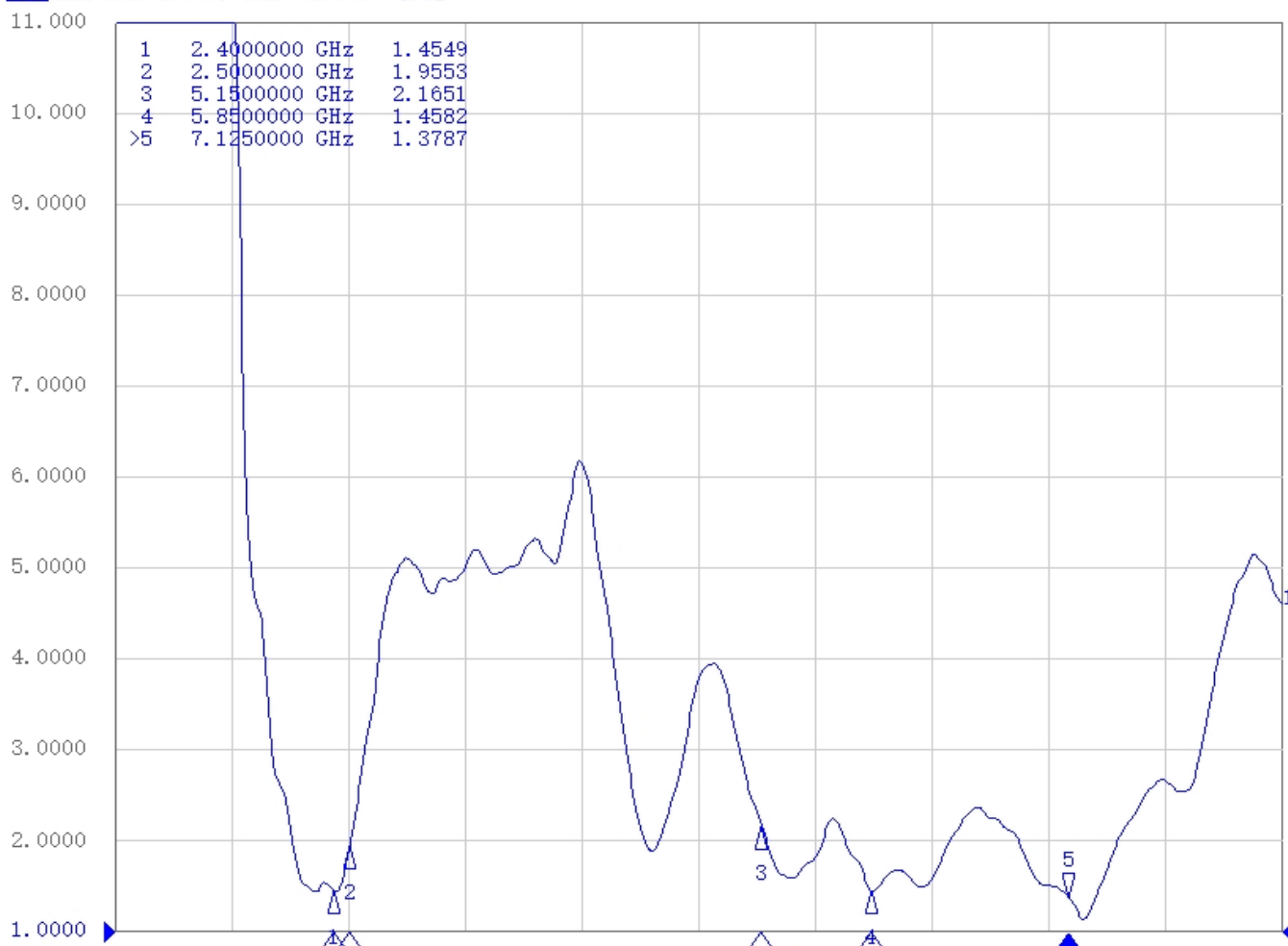
## 天线组装位置（图片仅供参考组装）



## 电气测试报告（RF Performance Test Report）

### WIFI1-V.S.W.R

► Tr1 S11 SWR 1.000/ Ref 1.000 [F1]



## CONFIDENTIAL

This message contains information that may be confidential and privileged. Unless you are the addressee (or authorized to receive messages for the addressee), you can not use, copy or disclose to any third party or any information contained in the message. If you have received the message in error, please advise the sender by reply e-mail and delete the message. Nothing in this message should be interpreted as a digital or electronic signature that can be used to authenticate a contract or other legal document. Thank you very much.

**WIFI1-无源测试数据**

freq(MHz)	Effi (%)	Gain	freq(MHz)	Effi (%)	Gain	freq(MHz)	Effi (%)	Gain
2400	38.64	1.96	5150	37.33	2.00	5900	34.78	2.72
2410	40.59	1.94	5200	35.07	1.35	6000	35.06	2.94
2420	42.41	1.93	5250	34.43	2.05	6100	31.15	3.27
2430	43.48	2.19	5300	34.55	2.75	6200	33.73	2.98
2440	44.75	2.41	5350	31.59	2.86	6300	34.43	3.06
2450	45.32	2.32	5400	34.06	3.32	6400	34.74	2.25
2460	45.43	2.22	5450	33.10	2.52	6500	34.37	1.35
2470	44.57	2.03	5500	35.52	1.30	6600	33.09	1.43
2480	42.41	1.96	5550	37.85	1.59	6700	34.42	1.05
2490	39.35	2.04	5600	36.97	1.51	6800	32.40	0.75
2500	36.29	2.09	5650	39.81	1.59	6900	32.26	0.71
			5700	35.29	1.13	7000	31.65	0.91
			5750	34.19	2.16	7100	30.19	0.88
			5800	35.09	2.20	7200	29.75	1.07
			5850	34.78	2.12			

**WIFI 1 –有源测试数据**

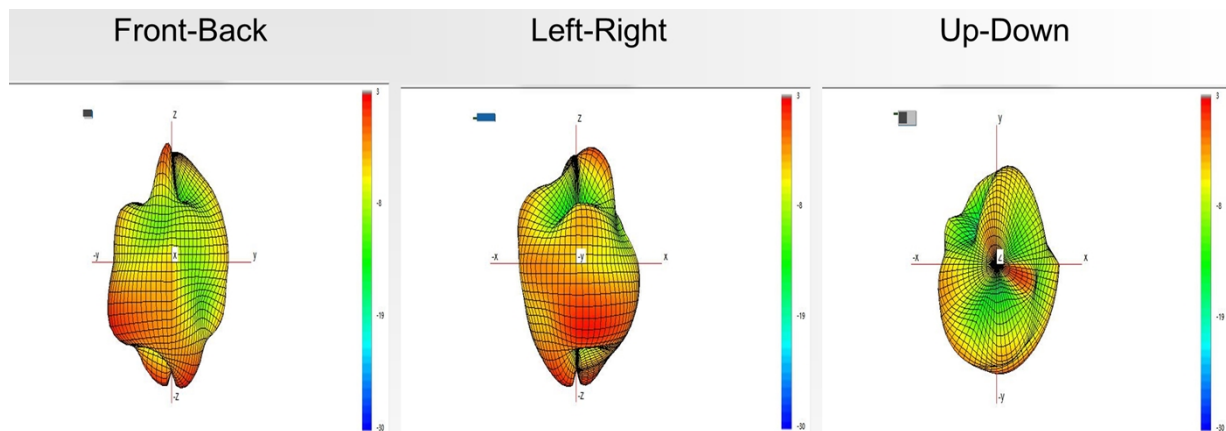
	channel	TRP	TIS
802.11a	36	12.48	-60.49
	100	12.59	-60.35
	157	13.68	-61.28
802.11b	1	10.46	-62.39
	7	10.18	-61.85
	11	10.32	-61.67

**CONFIDENTIAL**

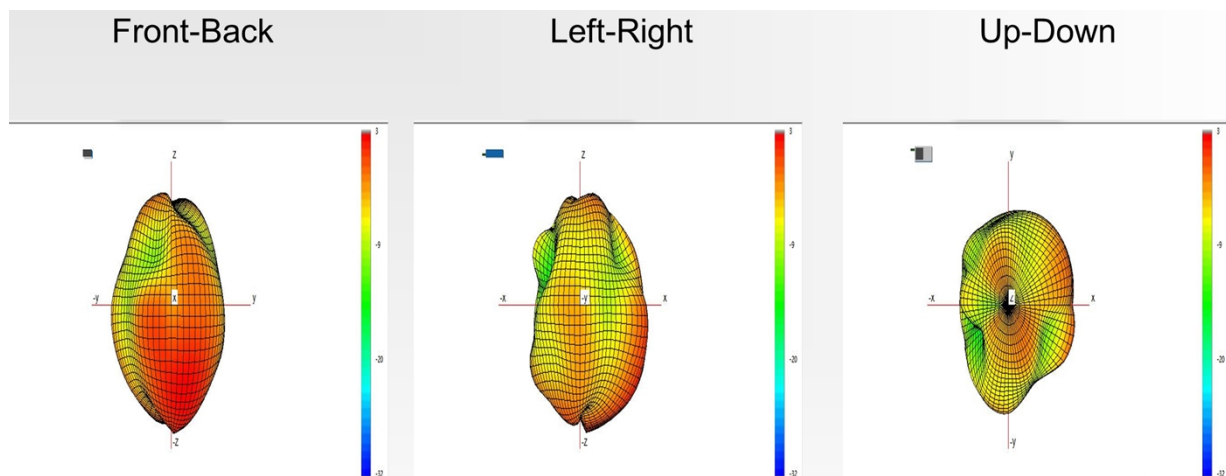
This message contains information that may be confidential and privileged. Unless you are the addressee (or authorized to receive messages for the addressee), you can not use, copy or disclose to any third party or any information contained in the message. If you have received the message in error, please advise the sender by reply e-mail and delete the message. Nothing in this message should be interpreted as a digital or electronic signature that can be used to authenticate a contract or other legal document. Thank you very much.

## WIFI1-天线辐射 3D 图

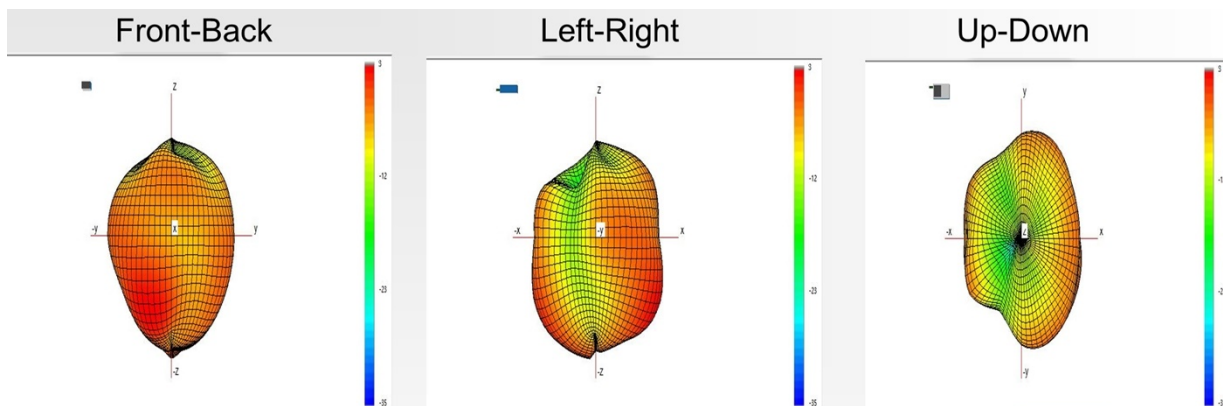
### 2450M:



### 5500M:



### 6525M:

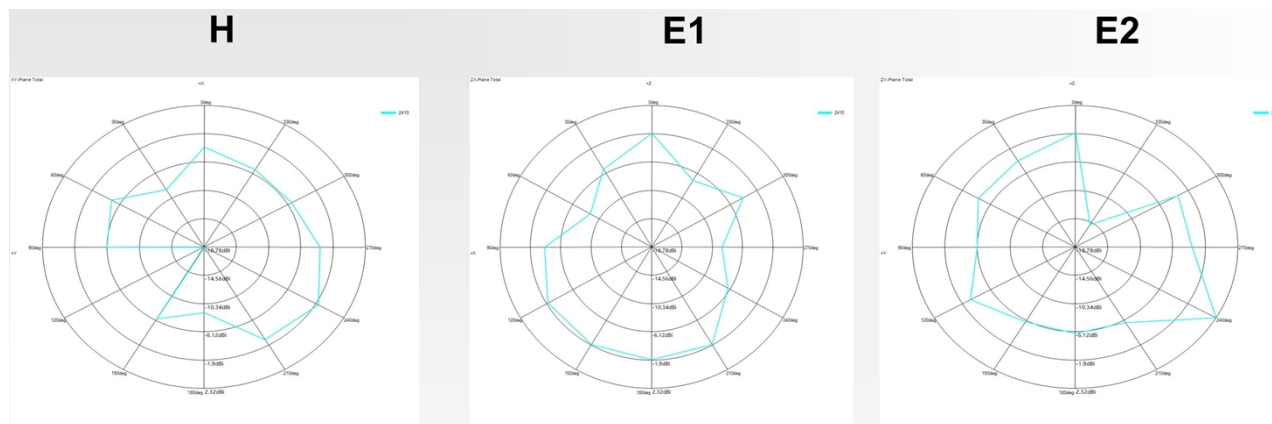


## CONFIDENTIAL

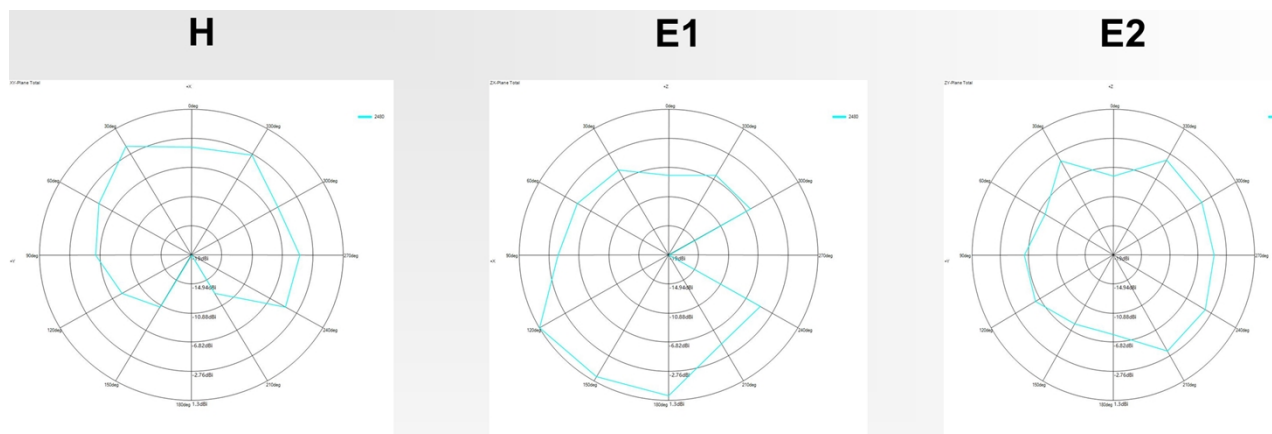
This message contains information that may be confidential and privileged. Unless you are the addressee (or authorized to receive messages for the addressee), you can not use, copy or disclose to any third party or any information contained in the message. If you have received the message in error, please advise the sender by reply e-mail and delete the message. Nothing in this message should be interpreted as a digital or electronic signature that can be used to authenticate a contract or other legal document. Thank you very much.

## WIFI1-天线辐射 2D 图

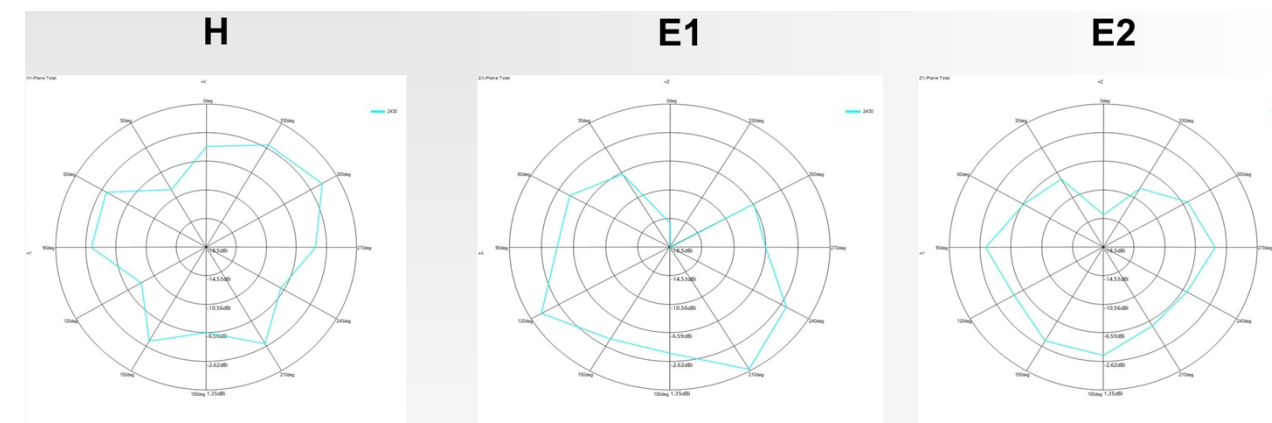
### 2450M:



### 5500M:



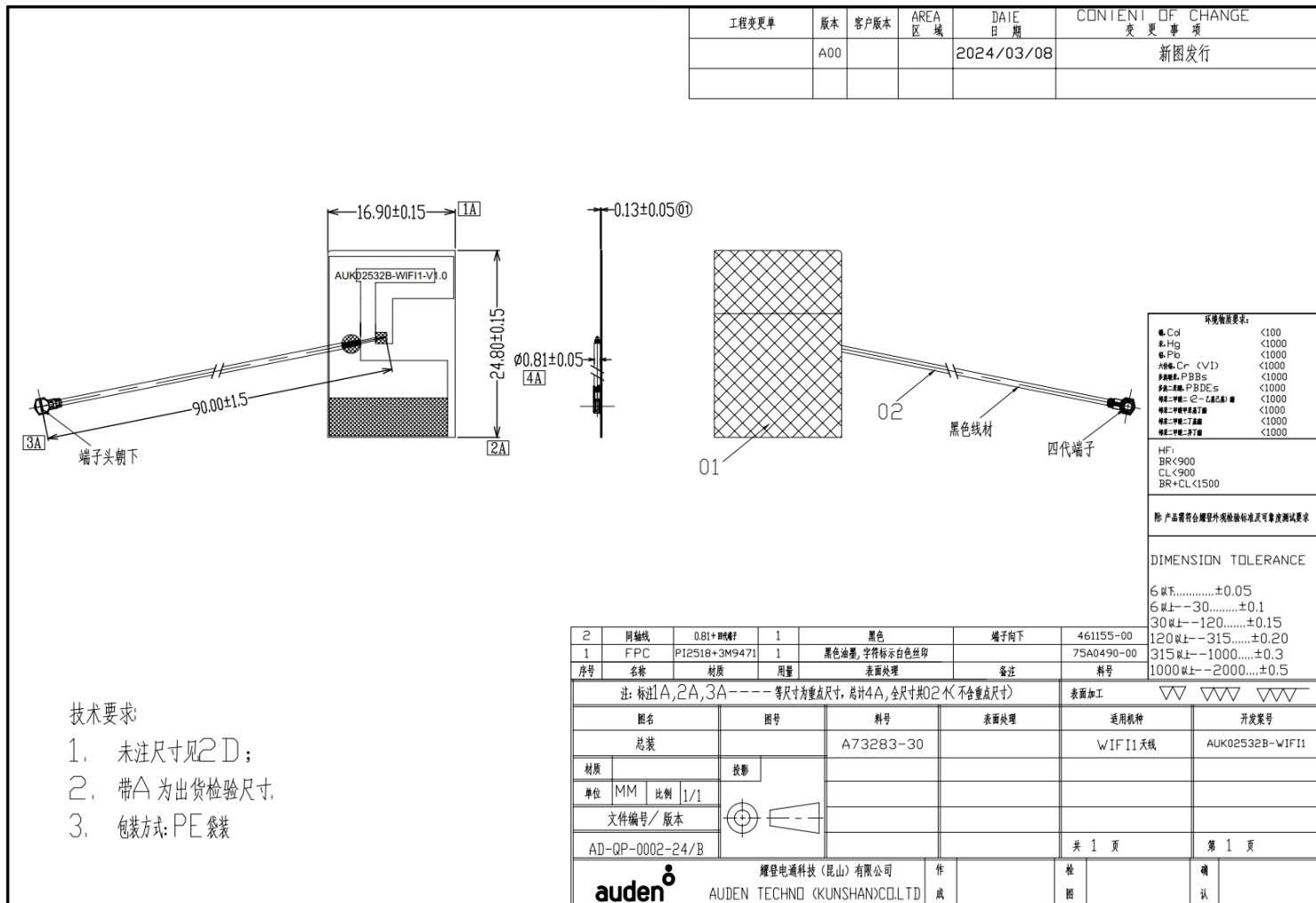
### 6525M:



## CONFIDENTIAL

This message contains information that may be confidential and privileged. Unless you are the addressee (or authorized to receive messages for the addressee), you can not use, copy or disclose to any third party or any information contained in the message. If you have received the message in error, please advise the sender by reply e-mail and delete the message. Nothing in this message should be interpreted as a digital or electronic signature that can be used to authenticate a contract or other legal document. Thank you very much.

## 工程图纸 (Product Drawing)



## CONFIDENTIAL

This message contains information that may be confidential and privileged. Unless you are the addressee (or authorized to receive messages for the addressee), you can not use, copy or disclose to any third party or any information contained in the message. If you have received the message in error, please advise the sender by reply e-mail and delete the message. Nothing in this message should be interpreted as a digital or electronic signature that can be used to authenticate a contract or other legal document. Thank you very much.