

APPENDIX C DESCRIPTION OF SAR MEASUREMENT SYSTEM

Probe Positioning System

The measurements were performed with the state-of-the-art automated near-field scanning system **DASY5 Version 52** from Schmid & Partner Engineering AG (SPEAG). The DASY5 fully complies with the IEEE 1528 and EN62209-1 and EN62209-2 SAR measurement requirements.

E-Field Probe Type and Performance

The SAR measurements were conducted with SPEAG dosimetric probe EX3DV4 Serial: 7358. Please refer to appendix D for detailed information.

Data Acquisition Electronics

The data acquisition electronics (DAE3) consists of a highly sensitive electrometer-grade preamplifier with auto-zeroing, a channel and gain switching multiplexer, a fast 16 bit AD-converter and a command decoder and control logic unit. The input impedance of the DAE3 box is 200 M Ω ; the inputs are symmetrical and floating. Common mode rejection is above 80dB. Transmission to the PC-card is accomplished through an optical downlink for data and status information as well as an optical uplink for commands and the clock.

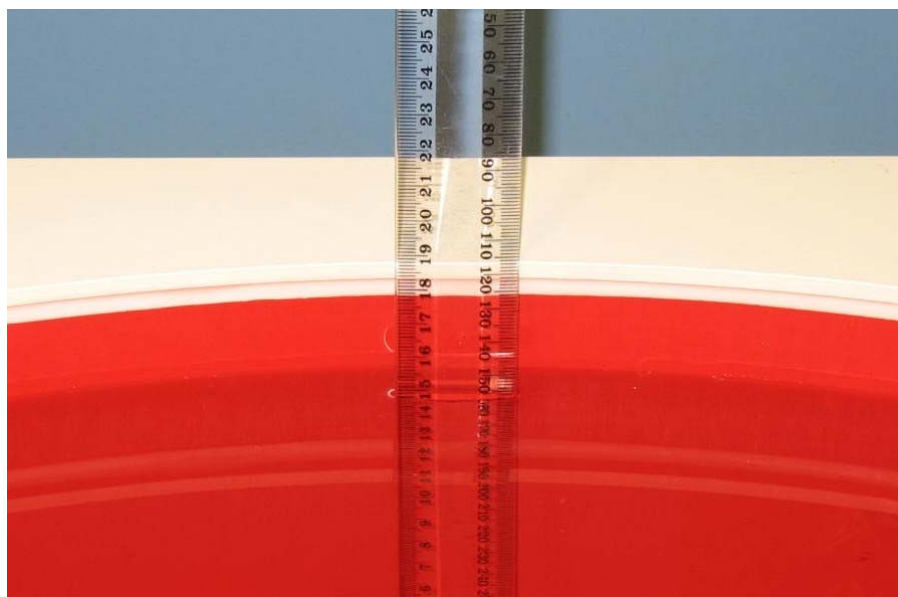
The mechanical probe-mounting device includes two different sensor systems for frontal and sideways probe contacts. They are used for mechanical surface detection and probe collision detection.

Device Holder for Laptops and ELI4 Phantom

A low loss clamp was used to position the DUT underneath the phantom surface.
Refer to Appendix A for photographs of device positioning

Liquid Depth 15cm

During the SAR measurement process the liquid level was maintained to a level of 15cm with a tolerance of 0.5cm.



Photograph Number 18.

Photo of liquid Depth in Flat Phantom

Phantom Properties

The phantom used during the testing complies with the IEEE 1528 and EN62209-1 and EN62209-2 SAR measurement requirements.

Table 20 Phantom Properties

Phantom Properties	
Depth of Phantom	19 cm
Width of flat section	40 cm
Length of flat section	60 cm
Thickness of flat section	2.0mm +/-0.2mm (flat section)
Dielectric Constant	<5.0
Loss Tangent	<0.05

Tissue Material Properties

The dielectric parameters of the brain simulating liquid were measured prior to SAR assessment using the HP85070A dielectric probe kit and HP8753D Network Analyser.

Simulated Tissue Composition Used for SAR Test

The tissue simulating liquids are created prior to the SAR evaluation and often require slight modification each day to obtain the correct dielectric parameters.

Table 21 Tissue Type: Muscle @ 5600MHz

EMCT Liquid, Volume of Liquid: 60 Litres

Approximate Composition	% By Weight
Distilled Water	77.5
Salt	0.3
Triton X-100	22.2



Accredited for compliance with ISO/IEC 17025. The results of the test, calibrations and/or measurement included in this document are traceable to Australian/national standards. NATA is a signatory to the ILAC Mutual Recognition Arrangement for the mutual recognition of the equivalence of testing, calibration and inspection reports.

This document shall not be reproduced except in full.