

USER MANUAL
Size: 400mm x 224mm

PORSCHE DESIGN

USER MANUAL
Outdoor Speaker PDS20



Read and understand all instructions before you use your speaker. If damage is caused by failure to follow instructions, the warranty does not apply. Be sure to include all documents when passing this product on to others. Keep these instructions for use for future reference.

Safety

Important safety instructions

- Make sure that the power supply voltage corresponds to the voltage of the unit.
- The speaker shall not be exposed to dripping or splashing.
- Do not place any source of danger on the speaker (e.g. liquid filled objects, lit candles).
- Make sure that there is enough free space around the speaker for ventilation.
- Please use the speaker safely in an environment with temperature between 0°C and 45°C.
- Only use attachments and accessories specified by the manufacturer.

Battery safety precautions

- Danger of explosion if a battery is incorrectly replaced. Replace only with the same or equivalent type.
- A battery (battery pack or battery installed) shall not be exposed to excessive heat such as sunshine, fire, or the like.
- A battery in extreme high or low temperatures during use, storage or transportation, and low air pressure at high altitude can pose safety hazards.
- Do not replace a battery with an incorrect type that can defeat a safeguard (for example, some lithium battery types).
- Disposing a battery into fire or a hot oven, mechanically crushing or cutting a battery can result in an explosion.
- Leaving a battery in an extremely high temperature surrounding, or an extremely low air pressure environment may result in an explosion or leakage of flammable liquid or gas.

Warning

- Never leave children unsupervised with the packaging material. The packaging material poses a suffocation hazard. Children frequently underestimate dangers.
- Always keep children and pets away from the product.
- Never remove the casing of this speaker.
- Never lubricate any part of this speaker.
- Place this speaker on a flat, hard and stable surface.
- Never place this speaker on other electrical equipment.
- Do not place this speaker to water, moisture and liquid-filled objects over 1m deep nor over 30 minutes.
- Keep this speaker away from direct sunlight, naked flames or heat.
- Risk of explosion if a battery is replaced by an incorrect type.

Notes on charging the built-in lithium battery

Please note that your device contains built-in lithium batteries. The charging capacity of lithium batteries will decrease over time due to their self-discharge characteristics. To ensure the longevity of your device's battery, we recommend charging the built-in lithium battery to around 50% every 6 months when the device is not in use.

Care for your product

Only use a dry microfiber cloth to clean the product.

Care of the environment

Disposal of your old product and battery

Your product is designed and manufactured with high quality materials and components, which can be recycled and reused.

This symbol on a product means that the product is covered by European Directive 2012/19/EU.

This symbol means that the product contains batteries covered by European Directive 2013/56/EU which cannot be disposed of with normal household waste. Inform yourself about the local separate collection system for electrical and electronic products and batteries. Follow local rules and never dispose of the product and batteries with normal household waste. Correct disposal of old products and batteries helps prevent negative consequences for the environment and human health.

All unnecessary packaging has been omitted. We have tried to make the packaging easy to separate into three materials: cardboard (box), polystyrene foam (buffer) and polyethylene (bags and protective foam sheet). Your product consists of materials which can be recycled and reused if disassembled by a specialized company. Please observe the local regulations regarding disposal of packaging materials, exhausted batteries and old equipment.

Declaration of conformity



This product complies with the radio interference requirements of the European community. Hereby, TP Vision Europe B.V. declares that the product is in compliance with the essential requirements and other relevant provisions of RED Directive 2014/53/EU and UK Radio Equipment Regulations SI 2017 No 1206. You can find the Declaration of Conformity on www.porsche-design.com.



The Bluetooth® word mark and logos are registered trademarks owned by Bluetooth SIG, Inc. and any use of such marks by MMD Hong Kong Holding Limited is under license. Other trademarks and trade names are those of their respective owners.

What's in the box



Speaker



USB charging cable



Silicon Ring



Quick start guide

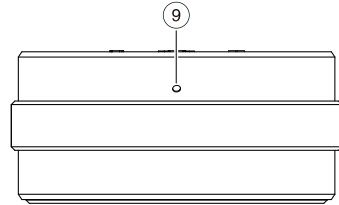
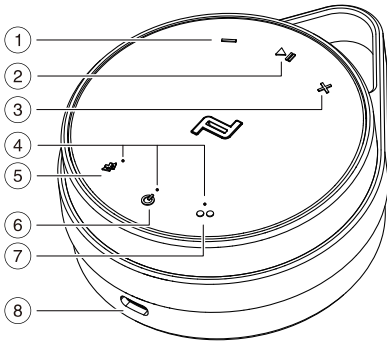


Global warranty



Safety instructions

Product overview



- ① – (Volume) key
Decrease the volume
- ② Play/Pause key; Previous/Next track in Bluetooth mode.
- ③ + (Volume) key
Increase the volume
- ④ Bluetooth/Power and Battery Low/Stereo Pairing indicator
- ⑤ Bluetooth button
Press and hold to connect or disconnect Bluetooth device
- ⑥ On/Off button
Press and hold to turn the unit on and off
- ⑦ Stereo Pairing button
- ⑧ USB-C charging port
- ⑨ Microphone hole

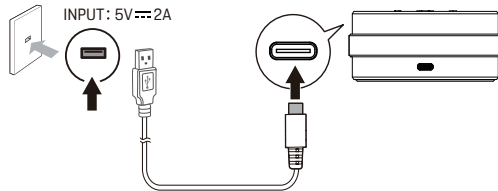
Power supply (built-in battery)

This speaker comes with a built-in rechargeable battery. The power indicator will blink in red when in low battery case both in standby and power on state. If the battery level is less than 10%, Speaker will power off.

Charge the speaker

Connect the supplied USB charging cable to the charging port of the speaker and the USB wall outlet (5V \rightleftharpoons 2A).

Warning: If you are not going to use the speaker for a long time, turn it off and be sure to unplug its USB charging cable from the power outlet.



Charging indicator status

	Power indicator
Power off state	Charging: Blinks red three times then solid red Fully charged: Red light off
Power on state	Charging: Blinks red and white alternately Fully charged: Solid White

Turn on and off

Press and hold for 3 seconds to turn the unit on, the power indicator turns to solid white, and a prompt tone "power on" is heard.

Press and hold for 3 seconds to turn the unit off, all indicator light off and a prompt tone "power off" is heard.

Change language of prompt tone

In "power on" mode, press and hold and simultaneously for 3 seconds to switch the language of prompt tone between Chinese and English.

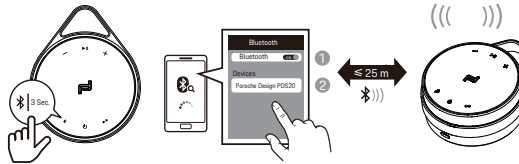
Turn off automatically

The speaker turns off automatically if:

- the speaker does not play in Bluetooth mode or no Bluetooth device is connected in 15 minutes.

Connect the speaker to your Bluetooth device

- Press and hold for 3 seconds to turn on the speaker, the speaker automatically enters Bluetooth mode, and the Bluetooth indicator blinks white slowly. On the Bluetooth device, turn on Bluetooth, search for and select Porsche Design PDS20 to connect. Once the Bluetooth connection is successful, the Bluetooth indicator turns to solid white and a prompt tone "Bluetooth connected" is heard, the speaker can play the music of the connected Bluetooth device.



- To disconnect the Bluetooth connection, press and hold the Bluetooth button for 3 seconds until the Bluetooth indicator blinks white and a prompt tone "Bluetooth pairing" is heard.
- When the speaker is restarted, it will automatically be reconnected to the last successfully connected Bluetooth device.

Bluetooth indicator status

State	Bluetooth indicator
Bluetooth paring state	Blinking White fast
Bluetooth reconnect state	Blinking white slowly
Bluetooth unpaired state	Blinking white slowly
Bluetooth connected state	Solid white

Note:

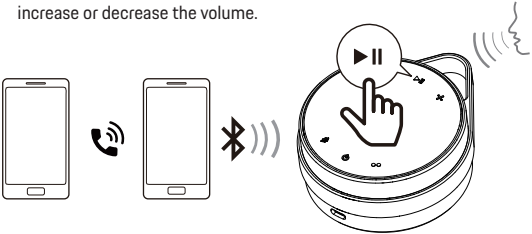
- The range of the Bluetooth connection is approximately 25 meters.
- In Bluetooth mode, the Play/Pause, Volume +/- keys are effective.

Clear Bluetooth connection history

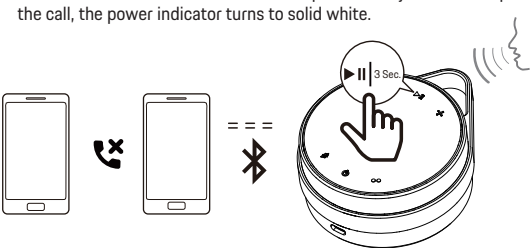
- Press and hold for 8 seconds until a prompt tone "Bluetooth pairing" is heard. After all records are cleared, the speaker returns to the pairing mode, and the Bluetooth indicator blinks white three times, then turn to slow flash.

Call mode

- Ensure that the speaker is paired with a Bluetooth device. When a call is received on your phone, you will hear a ringtone on the speaker. Press **▶||** on the speaker to answer the call, the power indicator turns to solid white. During a call, press the Volume +/- keys to increase or decrease the volume.

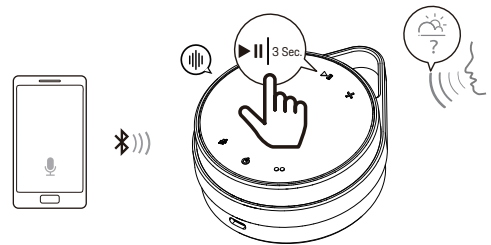


- Ensure that the speaker is paired with a Bluetooth device. When a call is received on your phone, you will hear a ringtone on the speaker. Press and hold **▶||** for 3 seconds on the speaker to reject or hand up the call, the power indicator turns to solid white.



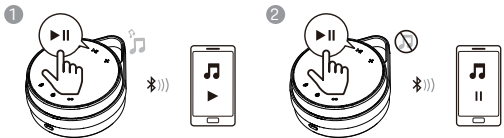
Voice assistant

- Press and hold **▶||** on the speaker for 3 seconds to activate the voice assistant on the mobile device connected to the speaker via Bluetooth.



Music mode

Ensure that the speaker is paired with a Bluetooth device.



- Press Volume +/- keys to increase or decrease the volume.
- Press and hold Volume +/- keys to continuously increase or decrease the volume.
During playback: A prompt tone will be heard when the volume reaches its minimum level. No prompt tone when the volume reaches its maximum level
Pause playback: A prompt tone will be heard when the volume reaches its maximum or minimum level.
- Press **▶||** on the speaker to pause and resume playback.
Press **▶||** on the speaker for 2 times to skip to next track.
Press **▶||** on the speaker for 3 times to skip to previous track.

Stereo pairing

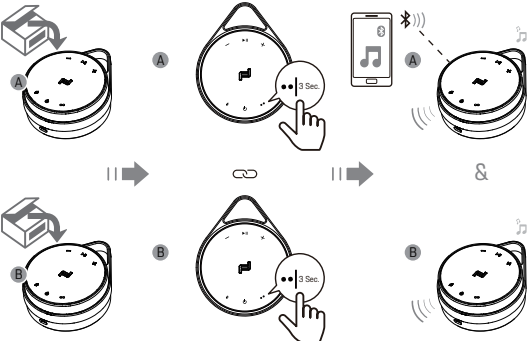
Welcome to purchase one more PDS20 to enjoy Stereo mode. In “power on” mode, on both speakers, they will enter Bluetooth mode automatically.

- Press and hold **●●** on both speakers simultaneously for 3 seconds to enter the Stereo Pairing mode.
- Once successfully paired, a prompt tone will be heard from the speaker.
- After stereo pairing is successful, press and hold **●●** for 3 seconds to unpair.

Stereo pairing indicator status

State	Stereo Pairing indicator
Stereo paring state	Blinking White
Stereo reconnect state	Blinking white slowly
Stereo unpaired state	Light off
Stereo connected state	Solid white

- Music playback in Stereo Pairing mode.
After one of the speaker is connected with a Bluetooth device, music can be played on both the two speakers.
- Press **▶||** to pause and resume playback.
Press +/- to increase or decrease the volume.



Note: Stereo pairing time is limited to 60 seconds, pairing mode will be exited if timed out.

Product specifications

Model.....	PDS20/00
Power supply.....	5V \Rightarrow 2A
Rated capacity of lithium battery.....	3.7V \Rightarrow 2400mAh
Dimensions of main unit (WxHxD)	94x116x43mm
Weight (main unit)	332g

Amplifier

Output power.....	5W
Frequency response.....	20-20000Hz
Signal to noise ratio.....	>70dB

Speaker

Speaker impedance.....	4 Ω
Max. input power of speaker.....	5W
Speaker dimensions.....	48x48mm

Bluetooth

Bluetooth version.....	5.3
Frequency range.....	2400MHz-2483.5MHz
Max. transmission power.....	\leq 10dBm (EIRP)
Bluetooth range.....	ca. 25m
Compatible Bluetooth profiles	A2DP, AVRCP, HFP

Note: Specifications and design are subject to change without notice.

Troubleshooting

DO NOT attempt to repair the speaker, otherwise the warranty is void. If you encounter problems when using this speaker, please check the following before requesting repair service.

No power

- When only the built-in battery is used, make sure there is enough battery power.
- This speaker will automatically turn off when no audio device is connected or an audio device is connected but not playing within 15 minutes.

The speaker does not respond

- The speaker may run out of battery. Charge the build-in battery and then try again.
- Restore factory set up by press Volume – and **▶||** buttons together for 5 second to turn off the speaker. Then, restart the speaker and try again.

The sound quality deteriorates after the speaker connects to a Bluetooth device

- Bluetooth reception is poor. Move the device closer to the speaker or remove any obstacles between the device and the speaker.

Connection fails

- The speaker is not in pairing mode.
- The speaker has been connected to another Bluetooth device. Disconnect the device or all other connected devices and try again.

English

Supplier's Declaration of Conformity

Model Number: PDS20, PDS20/00, PDS20/yy (yy=00-99 or blank, for country code)
TPV-USA Corp
6525 Carnegie Blvd., Suite #200 Charlotte, NC 28211
Tomas.Guan@tpv-tech.com

FCC Information

This device complies with part 15 of the FCC Rules. Operation is subject to the following two conditions:
(1)This device may not cause harmful interference, and
(2)This device must accept any interference received, including interference hat may cause undesired operation.

NOTE: This equipment has been tested and found to comply with the limits for a Class B digital device, pursuant to Part 15 of the FCC Rules. These limits are designed to provide reasonable protection against harmful interference in a residential installation. This equipment generates, uses and can radiate radio frequency energy and, if not installed and used in accordance with the instructions, may cause harmful interference to radio communications. However, there is no guarantee that interference will not occur in a particular installation. If this equipment does cause harmful interference to radio or television reception, which can be determined by turning the equipment off and on, the user is encouraged to try to correct the interference by one or more of the following measures:
– Reorient or relocate the receiving antenna.
– Increase the separation between the equipment and receiver.
– Connect the equipment into an outlet on a circuit different from that to which the receiver is connected.
– Consult the dealer or an experienced radio / TV technician for help.

WARNING

Changes or modifications to this unit not expressly approved by the party responsible for compliance could void the user's authority to operate the equipment.

IC-Canada: CAN ICES-003(B)/NMB-003(B)

This device contains license-exempt transmitter(s)/receiver(s) that comply with Innovation, Science and Economic Development Canada's license-exempt RSS(s). Operation is subject to the following two conditions:

- (1)This device may not cause interference.
- (2)This device must accept any interference, including interference that may cause undesired operation of the device.

Français

Déclaration de conformité du fournisseur

Numéro de modèle: PDS20, PDS20/00, PDS20/yy (yy=00-99 ou blanc, pour le code de pays)
TPV-USA Corp
6525 Carnegie Blvd., Suite #200 Charlotte, NC 28211
Tomas.Guan@tpv-tech.com

Informations de la FCC

Cet appareil est conforme à la partie 15 des règles de la FCC. Son fonctionnement est soumis aux deux conditions suivantes :
(1)ce dispositif ne peut pas causer d'interférences nuisibles et
(2)cet appareil doit accepter toute interférence reçue, y compris les interférences qui peuvent causer un mauvais fonctionnement.

Remarque : cet équipement a été soumis à des essais et a été déclaré conforme aux limites stipulées pour un appareil numérique de classe B, conformément aux spécifications de la partie 15 du règlement de la FCC. Ces limites ont pour but d'assurer une protection raisonnable contre le brouillage nuisible dans une installation résidentielle. Cet équipement produit, utilise et peut émettre de l'énergie en radio fréquence et, s'il n'est pas installé et utilisé conformément aux directives, il peut causer un brouillage nuisible dans les communications radio.

Cependant, il est impossible de garantir qu'aucun brouillage ne se produira dans une installation particulière. Si cet équipement cause un brouillage de la réception de radio ou de télévision, ce qu'il est possible de déterminer en éteignant puis en rallumant l'équipement, l'utilisateur est prié d'essayer de corriger le brouillage au moyen de l'une ou de plusieurs des mesures suivantes :

- Réorienter ou déplacer l'antenne de réception.
- Augmenter la distance entre l'appareil et le récepteur.
- Brancher l'appareil à une prise sur un circuit différent de celui sur lequel le récepteur est branché.
- Consulter le revendeur ou un technicien radio/TV expérimenté.

AVERTISSEMENT

Les changements ou modifications de cet appareil non expressément approuvées par la partie responsable de la conformité pourraient annuler l'autorisation de l'utilisateur à utiliser l'équipement.

IC-Canada : CAN ICES-003(B)/NMB-003(B)

L'émetteur/récepteur exempt de licence contenu dans le présent appareil est conforme aux CNR d'Innovation, Sciences et Développement économique Canada applicables aux appareils radio exempts de licence. L'exploitation est autorisée aux deux conditions suivantes:
(1)L'appareil ne doit pas produire de brouillage;
(2)L'appareil doit accepter tout brouillage radioélectrique subi, même si le brouillage est susceptible d'en compromettre le fonctionnement.