

## KLS-Z701 Exhibit 01 - Product Labels

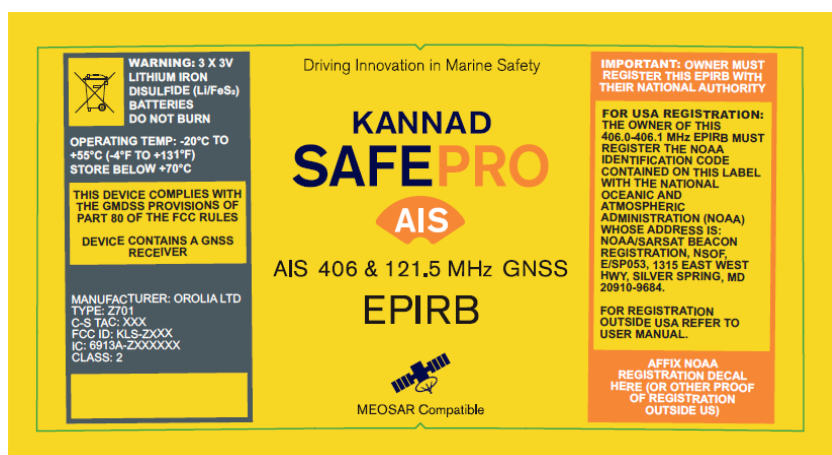
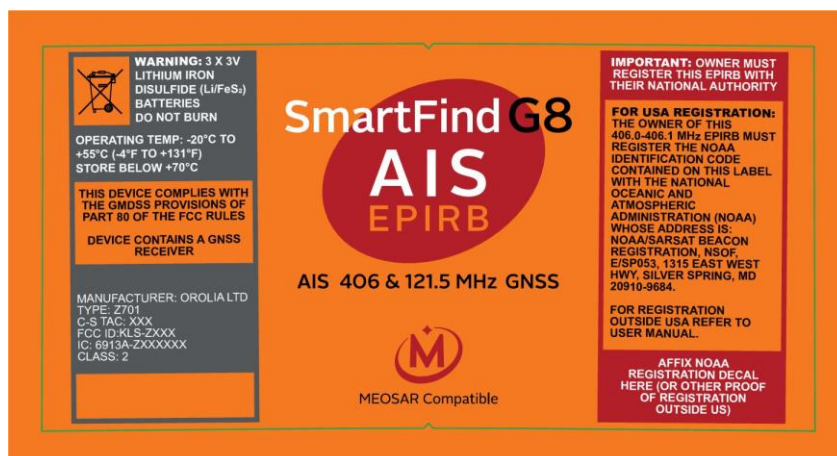
### Label Drawing Set

The beacon main label is shown in the following images and is different for each variant. It contains the following information required by C/S T.001 section 3.5.8:

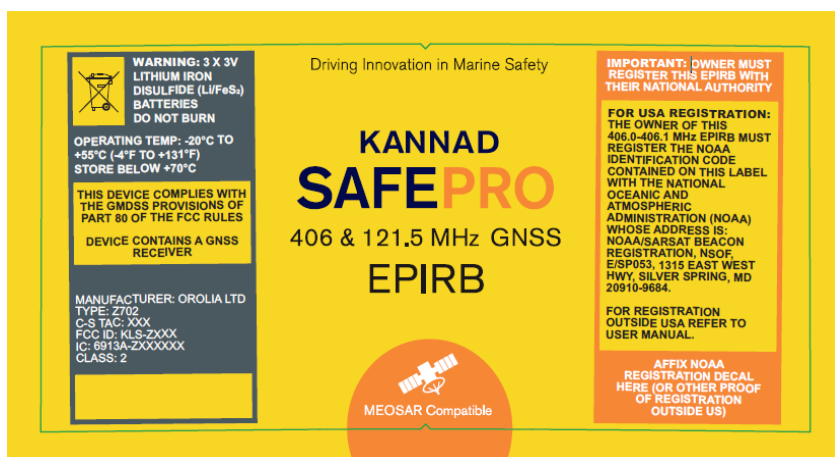
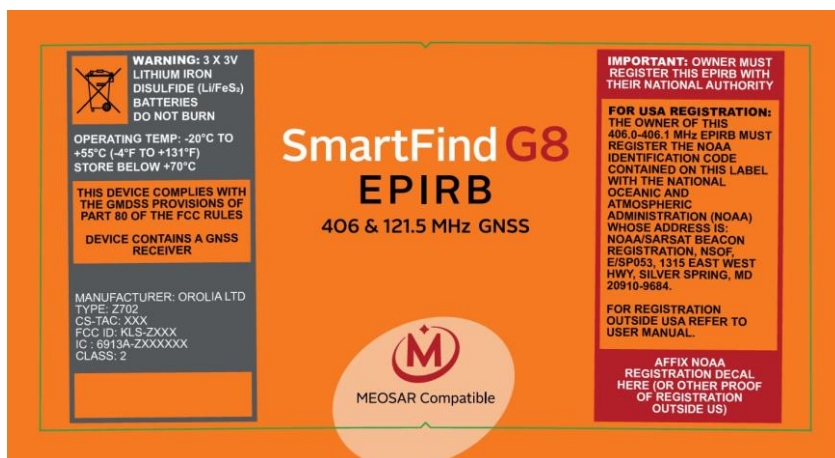
- i. beacon model name, beacon manufacturer and C/S TAC number; and
- iii operating temperature range (e.g., -20°C to +55°C).

The central section contains the brand name. In the examples below the main SmartFind brand is shown.

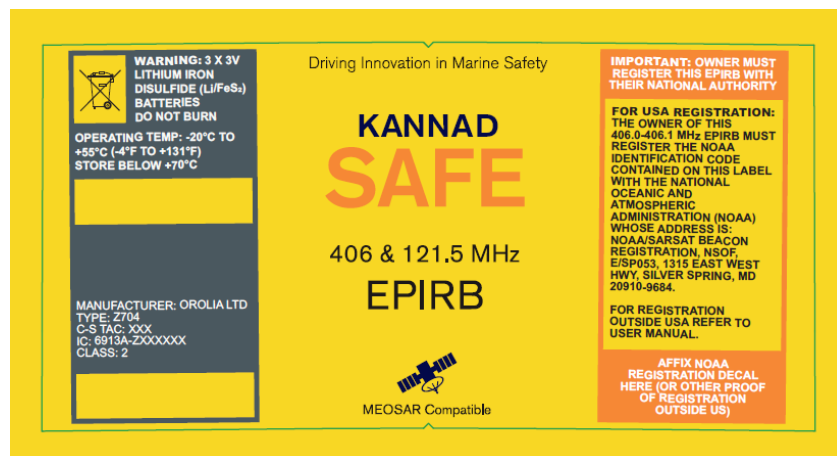
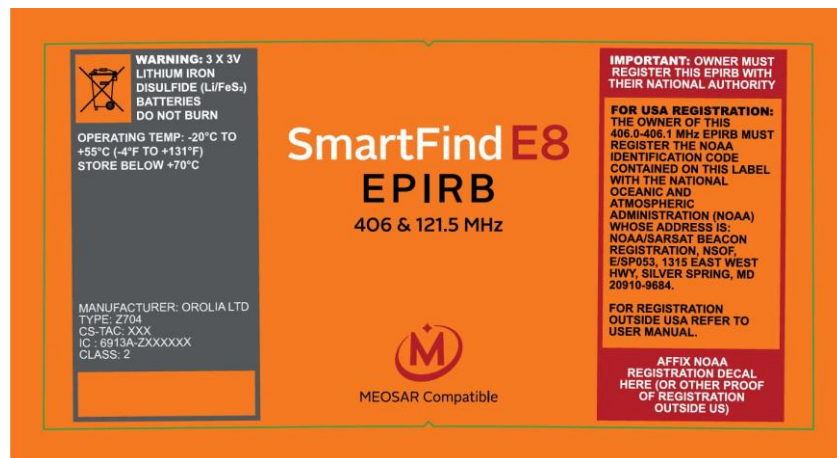
Z701 Beacon Main Label:



## Z702 Beacon Main Label:

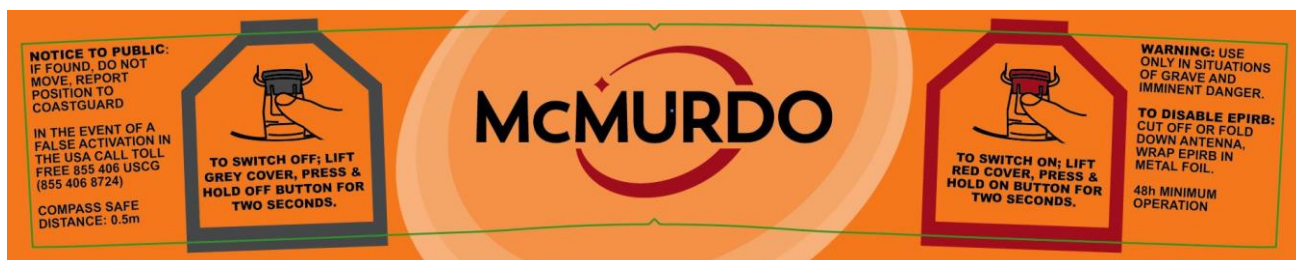


## Z704 Beacon Main Label:

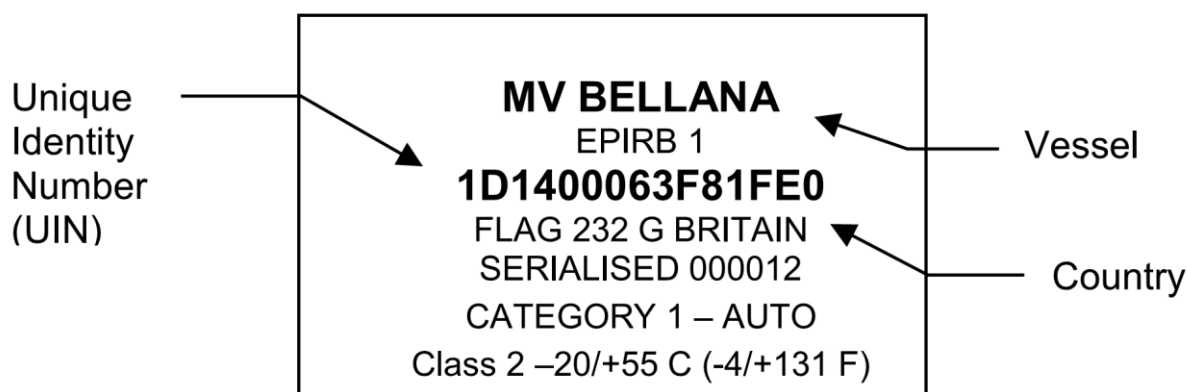


The beacon upper body label is shown in the following image and is the same for all variants. It contains the following information required by C/S T.001 section 3.5.8:

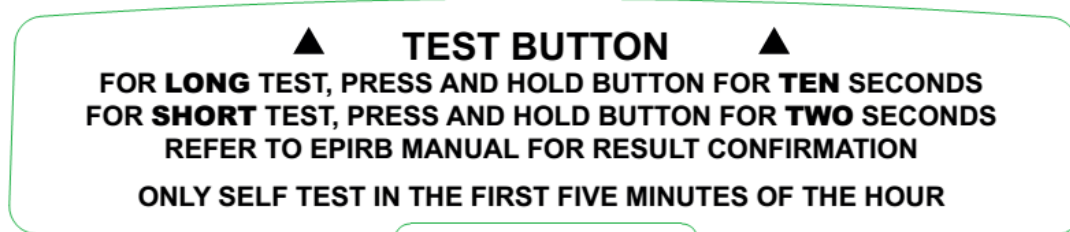
iv minimum duration of continuous operation (e.g., 24 hours).



The beacon programming label is shown in the following image and is the same for all variants. It contains the following information required by



The beacon dome label is shown in the following image and is the same for all variants.



Erwan THOMAS  
Certification and Hardware Engineer  
Tel : +33 (0)2 97 02 96 83  
Email : erwan.thomas@orolia.com