

## **Photograph of Construction**

**SECTION 2.1033(c) (12)**

**External Photos**

## **PHOTOGRAPH OF CONSTRUCTION**

### **SECTION 2.1033(c) (12)**

Photographs of the equipment of sufficient clarity to reveal equipment construction and layout, including meters, if any, and labels for controls and meters and sufficient views of the internal construction to define component placement and chassis assembly. Insofar as these requirements are met by photographs or drawings contained in instruction manuals supplied with the certification request, additional photographs are necessary only to complete the required showing.

### **RESPONSE:**

Equipment construction, layout, including meters, and labels for control are indicated in Installation, Test and Operational Manual (see Section on Users Manual). Internal photographs are included in the Section Internal Photos.

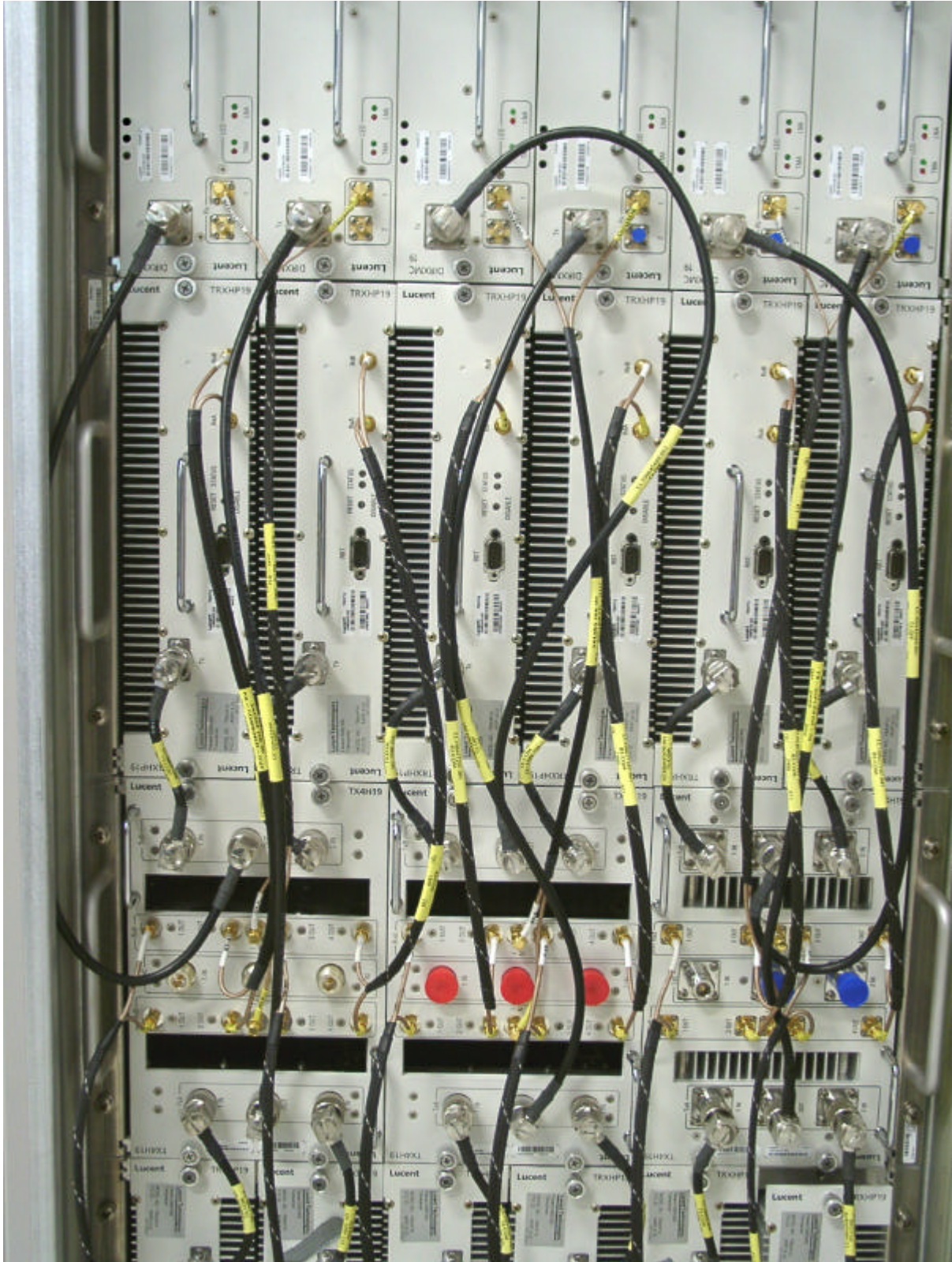
Following additional external photographs are included:

1. Photograph of twelve TRXHP19 installed in a Flexent Macrocell Indoor cabinet
2. Photograph close-up of TRXHP19 installed in a Flexent Macrocell Indoor cabinet
3. Photograph of twelve TRXHP19 installed in a Flexent Macrocell Outdoor cabinet
4. Photograph close-up of TRXHP19 installed in a Flexent Macrocell Outdoor cabinet
5. Photographs of TRXHP19 showing front view with FCC ID and other five sides

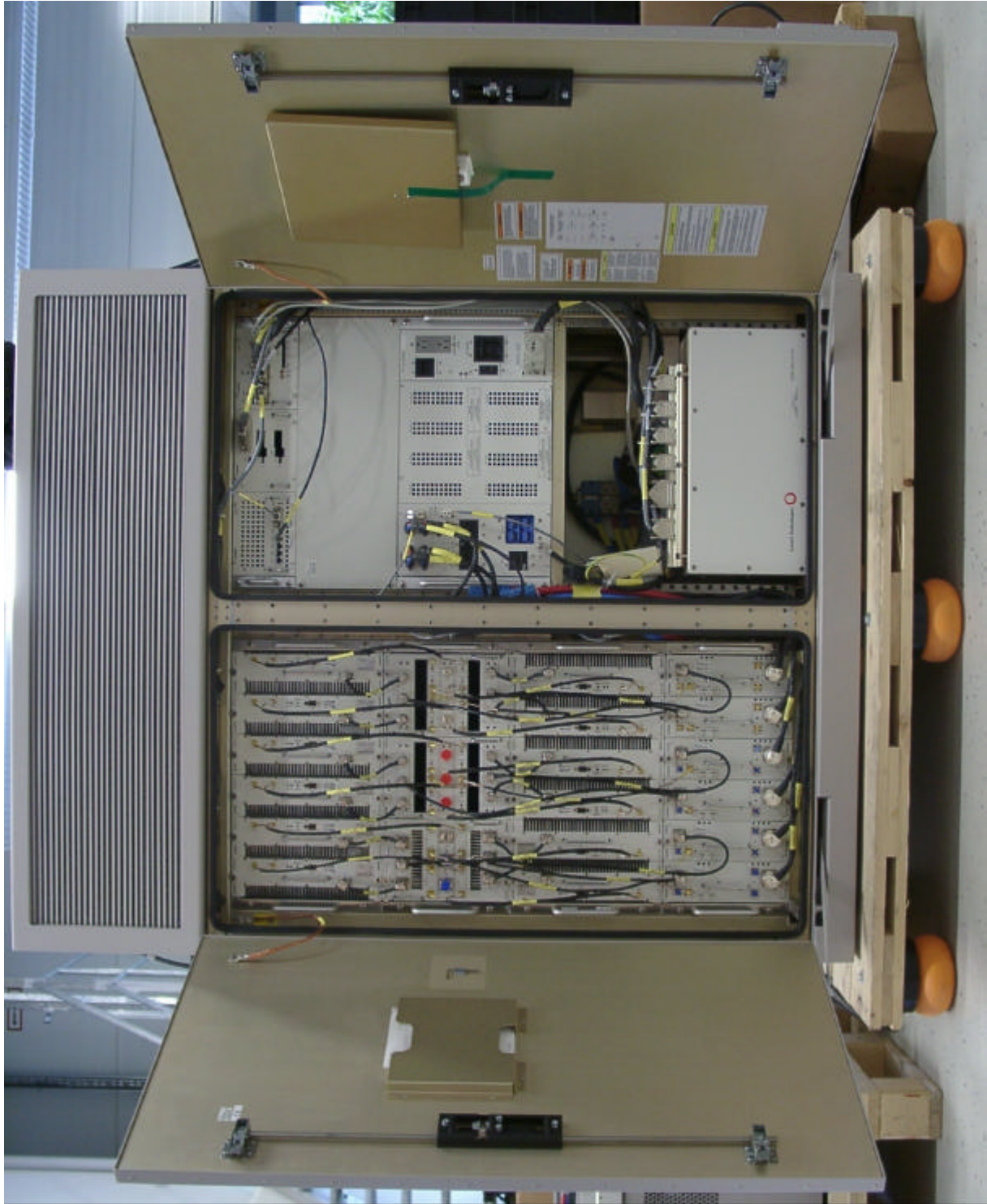


Photograph of twelve TRXHP19 installed in a Flexent Macrocell Indoor cabinet

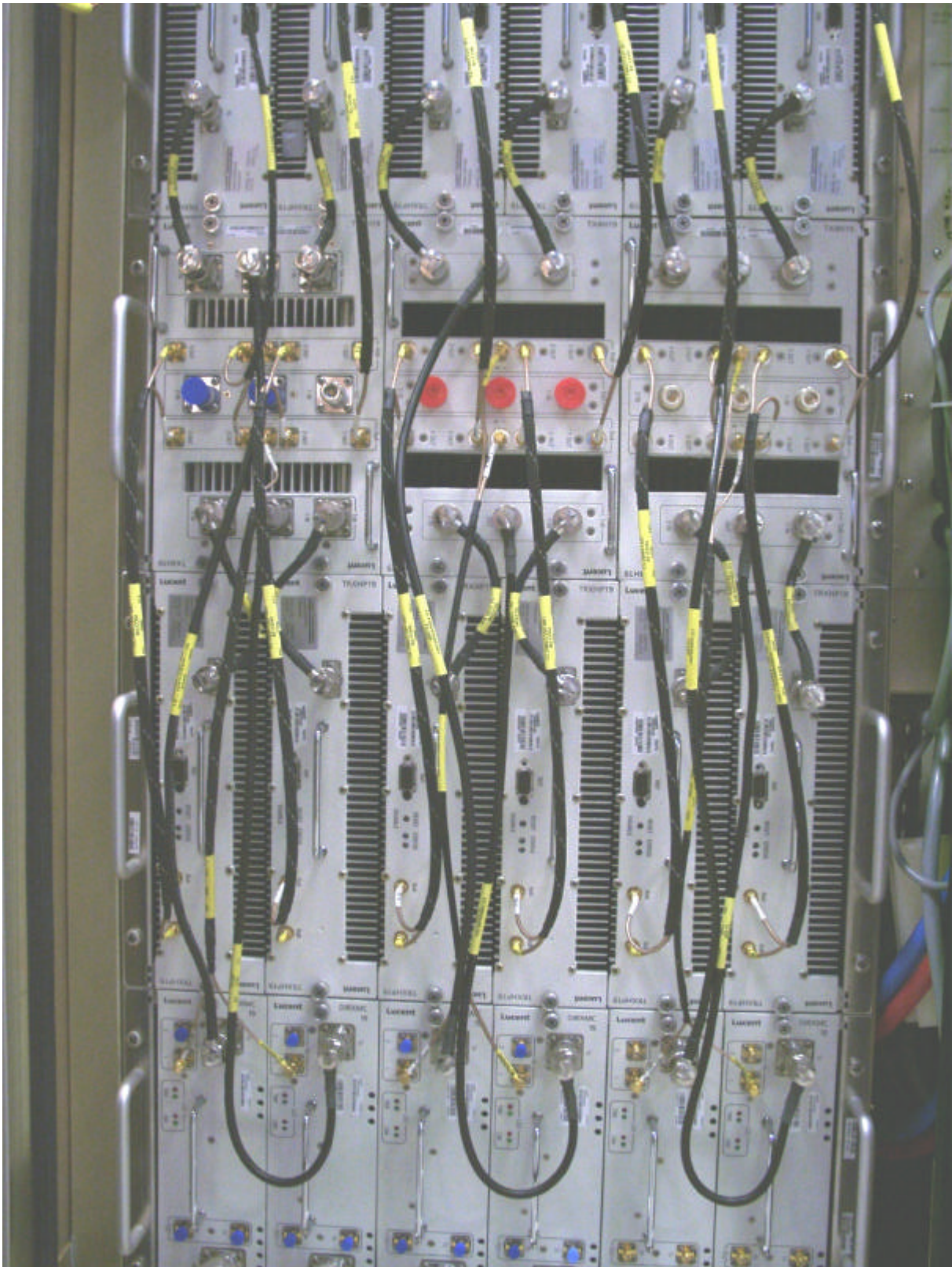
**Lucent Technologies Inc. – Proprietary**  
Use pursuant to Company Instructions



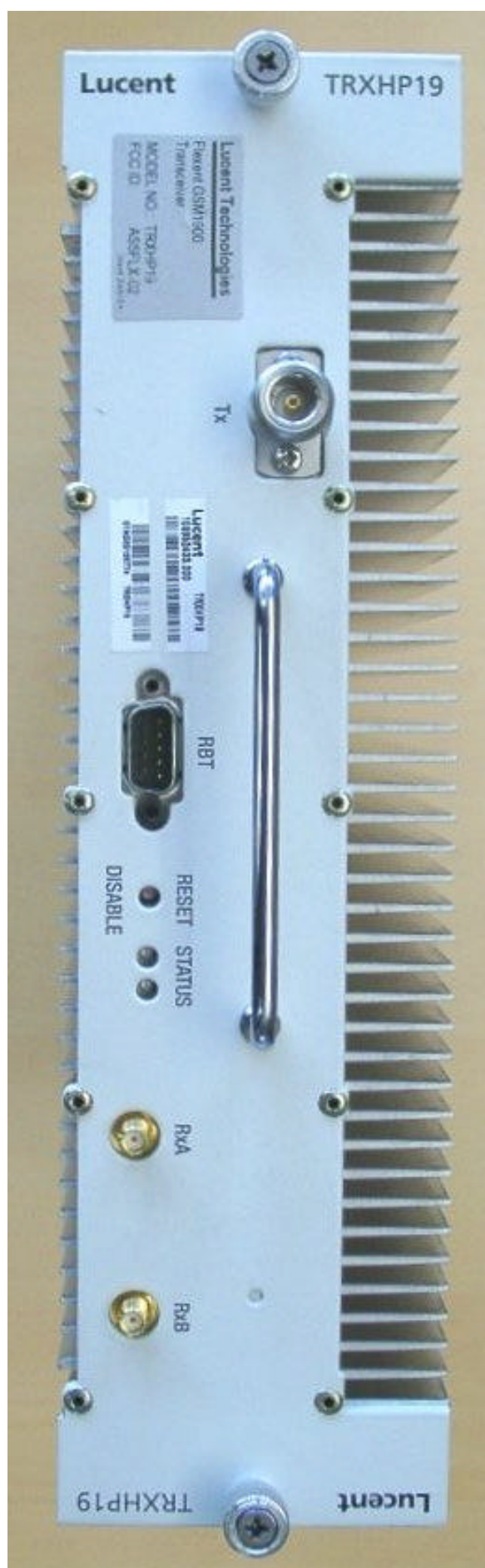
Photograph close-up of TRXHP19 installed in a Flexent Macrocell Indoor cabinet



Photograph of twelve TRXHP19 installed in a Flexent Macrocell Outdoor cabinet



Photograph close-up of TRXHP19 installed in a Flexent Macrocell Outdoor cabinet



Photograph of TRXHP19 front view with FCC ID label

**Lucent Technologies Inc. – Proprietary**  
Use pursuant to Company Instructions



Photograph of TRXHP19 left side view



Photograph of TRXHP19 right side view



Photograph of TRXHP19 rear side view

Lucent Technologies Inc. – Proprietary  
Use pursuant to Company Instructions



Photograph of TRXHP19 top side view



Photograph of TRXHP19 bottom side view