

MPP UA 2

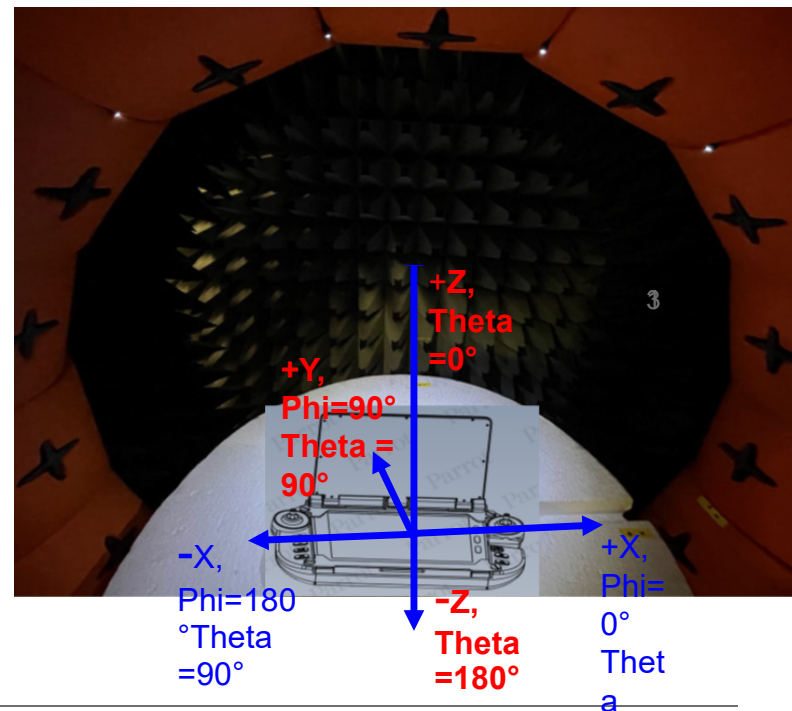
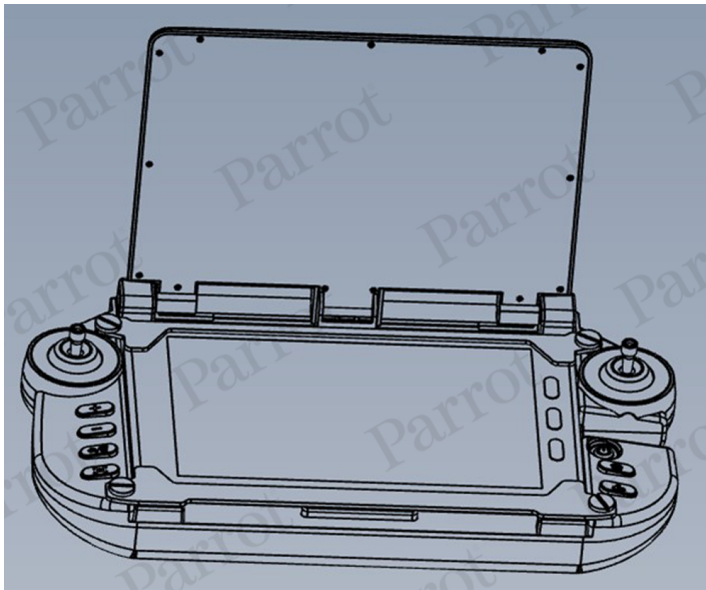
Simpulse & LoRa antennas performances



Parrot®

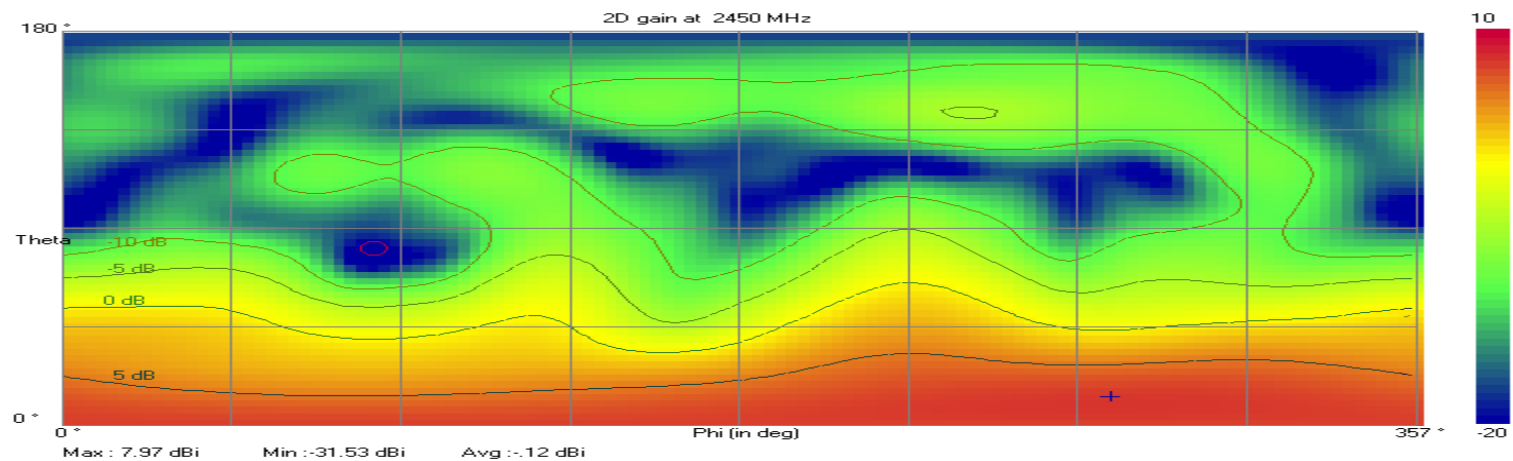
Measurement Info

- The measurement was made at Parrot radio test laboratory, with Starlab system
- The antennas were connected to a CW signal generator
- Angular resolution is : 3°
- Measurement uncertainty : $\pm 1\text{dB}$



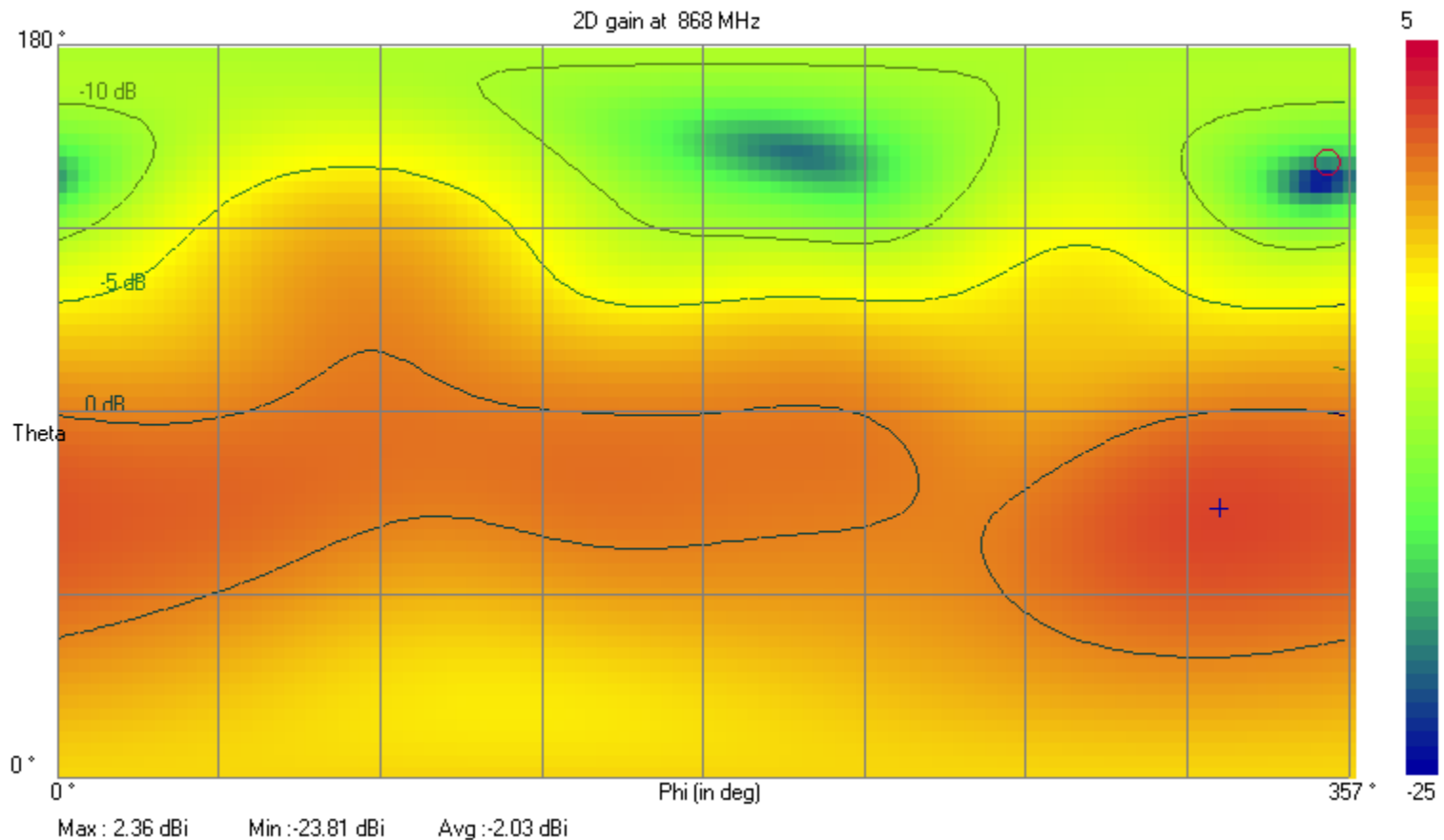
Simpulse antenna performances @ 2450 MHz

- 2D Gain at 2450 MHz
- Max Value ≈ 8 dBi
- RF output power = 26 dBm



LoRa antenna performances @ 868 MHz

- 2D Gain at 868 MHz
- Max Value $\approx 2,4$ dBi
- RF output power = 22 dBm



LoRa antenna performances @ 915 MHz

- 2D Gain at 915 MHz
- Max Value $\approx 2,5$ dBi
- RF output power = 22 dBm

