

**Wireless N USB Adapter 150Mbps**

**Hi-Gain**

**WS-WN622HN1,U12-43871**

## Introduction

Thank you for purchasing the Wireless USB Adapter, Wireless USB Adapter allows you to connect your laptop or desktop to any Wireless networks in your home or office. The Wireless USB Adapter is great for those who want to upgrade older computers to be able to access the internet over a Wireless network.

## Package Contents

- Wireless USB Adapter
- Setup CD with user manual
- Quick install guide

## System Requirements

- Notebook or desktop PC with Pentium 1 GHz-compatible or higher processor
- Windows 2000/XP/Vista/7, MAC OS, Linux
- Available Hi-Speed USB 2.0 port

## Installation

**IMPORTANT:** For proper operation, do *not* connect the Wireless USB Adapter to your computer before you install the software. If you do, wait for the Found New Hardware screen to display and click “**Cancel**”; otherwise, the installation process will likely be adversely affected.

Insert the included setup CD in the CD-ROM Drive and start the Setup.exe program.

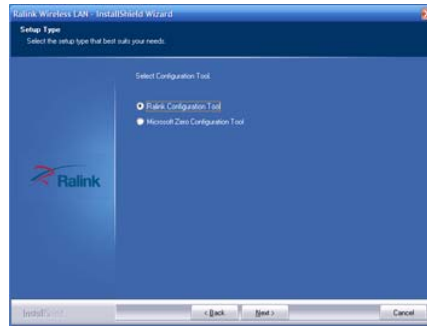
To start the installation, please click on the “**USB 802.11N Adapter**” or “**USB 802.11G Adapter**”



Wait for the installer to run

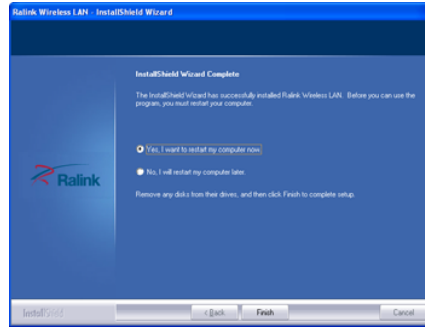
When the License Agreement screen displays, read the agreement and click “**Next**” to accept the terms and continue with the installation.

On the second Setup Type screen (below), choose a configuration tool. “**Ralink Configuration Tool**” is recommended, as it provides access to all adapter features.



If you prefer to use the tool provided by Windows XP/Vista, select **"Microsoft Zero Configuration Tool."** Choose either (the setting can be changed after the install), then click **"Next."**

The installer will automatically install the program. When done Select **Yes**.



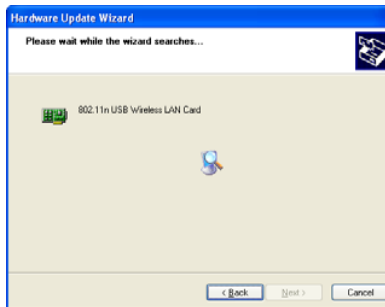
With the Welcome to the Found New Hardware Wizard screen displayed (which is automatic when the adapter is connected to the .computer), select the option “No, not this time” and click “**Next.**”



When prompted with “What do you want the wizard to do?” select “Install the software automatically (Recommended)” and click “**Next.**”




A status screen will display, indicating that the installation is in progress. No action is needed at this point.

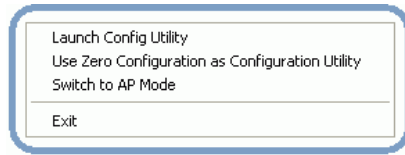


When the Completing the Found New Hardware Wizard screen displays, it indicates that the installation has been successfully completed and your Wireless USB Adapter is ready for configuration.

## Configuration

Once the installation is complete, you can configure the Wireless Adapter to connect to a wireless access point (AP). The wireless configuration utility will start automatically, and you'll also find a tray icon at the lower right in your Windows systems tray.

Right-click on the Ralink icon  in the task bar in the bottom right hand corner of your screen.



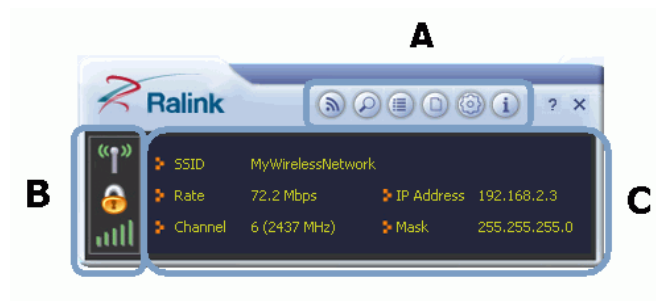
Lets you change the operation mode of the Utility.

- **Launch Config Utility:** Select this option to display the Utility's main screen.
- **Use Zero Configuration as Config Utility:** (Windows XP only) Select this option to use Windows to set up and manage your network connection. Selection of this mode is not necessary in Windows Vista, 7 or higher, as you can use Windows and the Ralink Utility to manage the Adapter without changing operating modes.
- **Switch to Client + AP Mode:** (Windows 7 and higher only) Select this option to let computers and devices connected to the Ralink AP access the Internet (or another network to which the Ralink AP is connected).
- **Switch to AP Mode:** Select this option to use the Utility as an access point and to set up a wireless network of your own.
- **Exit:** Select this option to close the main screen and exit the program. Any wireless connections managed by the Ralink Utility will be disconnected.






### Accessing the Utility's Features

The Ralink Utility lets you connect to a wireless network and the Internet, set up a wireless network, connect directly to other computers or devices using Wi-Fi Direct, and many more wireless-related features.

From the main screen, you can access the main features of the Utility (**A**), and find out about the status of your current network connection (**B** and **C**). By accessing the menu from the Ralink taskbar icon.



**A** Click these buttons to open the following screens and access the Ralink Utility's features.

-  Use the Wi-Fi Direct screens to set up a Wi-Fi Direct connection, and to share media files such as music or movies.
-  Use the Available Networks screen to find out about available wireless networks and their network status, and to connect to a wireless network.
-  Use the Link Information screens to find detailed information on the status of your wireless connection.
-  Use the Profile Settings screens to set up and use profiles to more quickly connect using frequently used settings, and to set up wireless security.
-  Use the About screen to find version information for your Utility.

**B** Use these buttons and icons to manage transmission and to find information about your wireless connection.



Click this button to enable or disable wireless transmission.



Indicates the security status of your connection.



Indicates the quality of your wireless connection.

**C** Use this screen to find information on wireless network settings.

- SSID: This shows the name of your wireless network.
- Rate: This shows the speed of your connection.
- Channel: This is the channel assigned to your connection. Change this if interference is a problem on your network.
- IP Address: This identifies the Ralink Adapter on your wireless network, much like a physical mailing address identifies a house on a street.
- Mask: The subnet mask hides your IP address from outside your wireless network.

**NOTE:** For advanced settings and additional features of the Wireless Adapter, refer to the user manual on the enclosed CD.



## FCC INFORMATION

This device complies with Part 15 of the FCC Rules. Operation is subject to the following two conditions:

1. This device may not cause harmful interference, and 2. This device must accept any interference received, including interference that may cause undesired operation.

Note: This equipment has been tested and found to comply with the limits for a Class B digital device, pursuant to part 15 of the FCC Rules. These limits are designed to provide reasonable protection against harmful interference in a residential installation. This equipment generates, uses and can radiate radio frequency energy and, if not installed and used in accordance with the instructions, may cause harmful interference to radio communications. However, there is no guarantee that interference will not occur in a particular installation. If this equipment does cause harmful interference to radio or television reception, which can be determined by turning the equipment off

and on, the user is encouraged to try to correct the interference by one or more of the following measures:

—Reorient or relocate the receiving antenna.

—Increase the separation between the equipment and receiver.

—Connect the equipment into an outlet on a circuit different from that to which the receiver is connected.

—Consult the dealer or an experienced radio/TV technician for help.

Caution: Any changes or modifications not expressly approved by the party responsible for compliance could void the user's authority to operate this equipment.

### FCC Radiation Exposure Statement

This equipment complies with FCC RF radiation exposure limits set forth for an uncontrolled environment.

The Maximum SAR value:0.725W/Kg