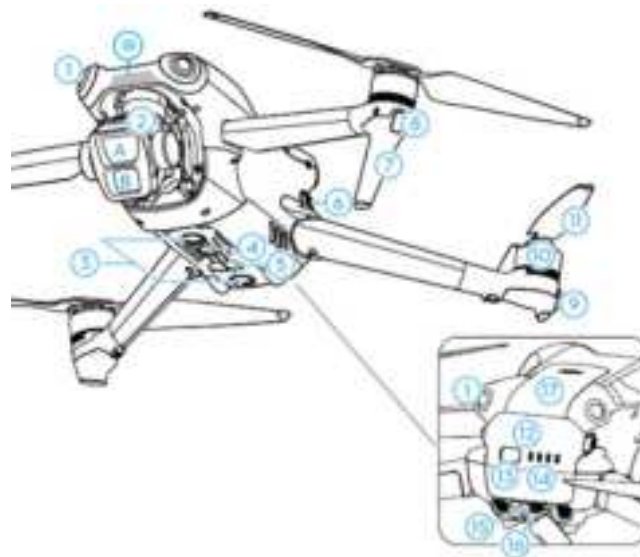


DJI Air 3S Quick Start Guide

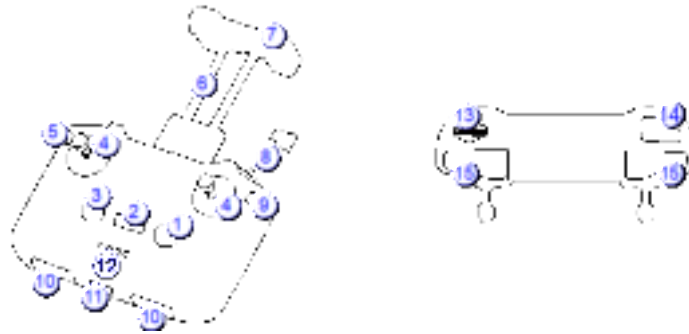
Aircraft



1. Omnidirectional Vision System ^[1]
2. Gimbal and Camera
 - A. Tele Camera
 - B. Wide Camera
3. Downward Vision System
4. Auxiliary Bottom Light
5. Infrared Sensing System
6. Battery Buckles
7. Landing Gears (Built-in antennas)
8. Front LEDs
9. Aircraft Status Indicators
10. Motors
11. Propellers
12. Intelligent Flight Battery
13. Power Button
14. Battery Level LEDs
15. USB-C Port
16. microSD Card Slot
17. Dongle Compartment
18. Forward Sensing System

[1] The omnidirectional vision system can sense obstacles in horizontal directions and above.

Remote Controller RC151

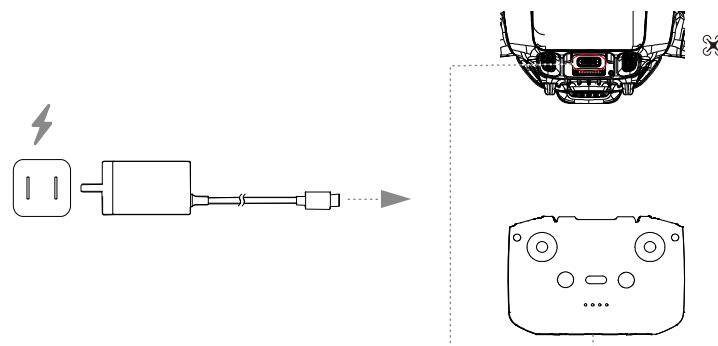


1. Power Button
2. Flight Mode Switch
3. Flight Pause/Return to Home (RTH) Button
4. Control Sticks
5. Customizable Button
6. Mobile Device Holder
7. Antennas
8. Remote Controller Cable
9. Photo/Video Toggle
10. Control Sticks Storage Slot
11. USB-C Port
12. Battery Level LEDs
13. Gimbal Dial
14. Shutter/Record Button
15. Mobile Device Slot

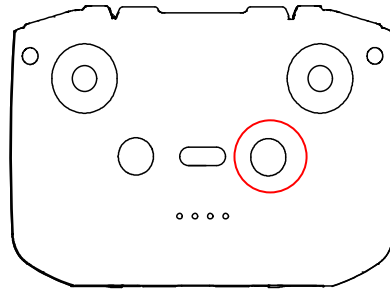
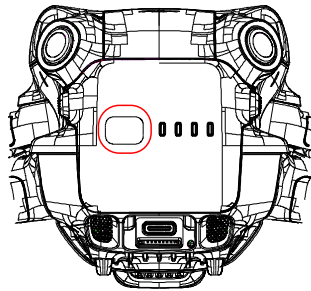
Downloading DJI Fly App



Charging to Activate



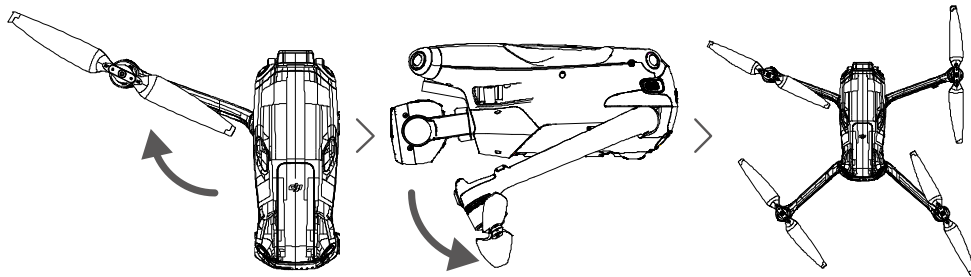
Checking Battery Level, Powering On/Off



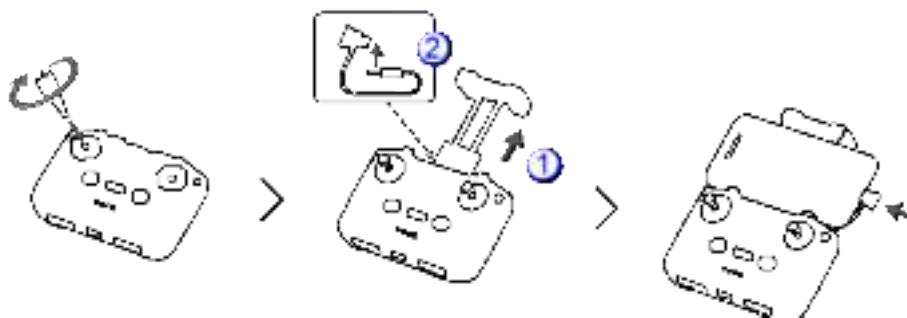
Press once to check the battery level.

Press, then press and hold to turn on/off.

Preparing the Aircraft



Preparing the Remote Controller



Ready to Fly

Power on the remote controller and the aircraft, then launch the DJI Fly App.



Basic Flight

Auto Take-off/Landing



Auto Takeoff



Auto Landing

- Manual Takeoff / Landing

Combination stick command to start/stop the motors



OR



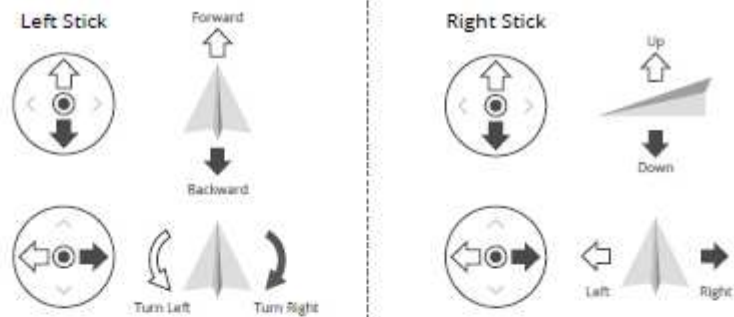
Left stick up (slowly) to take off



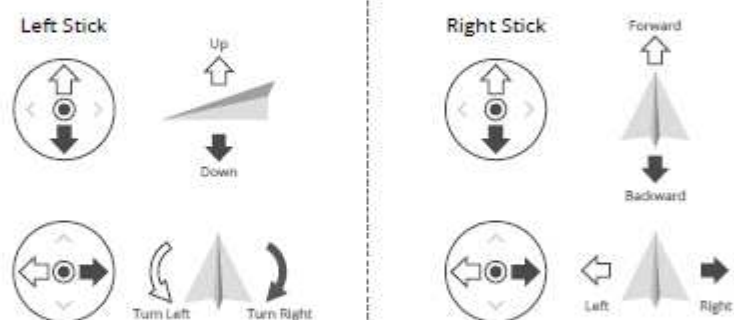
Left stick down (slowly) until you touch the ground
Hold a few seconds to stop the motors

Controlling the Aircraft

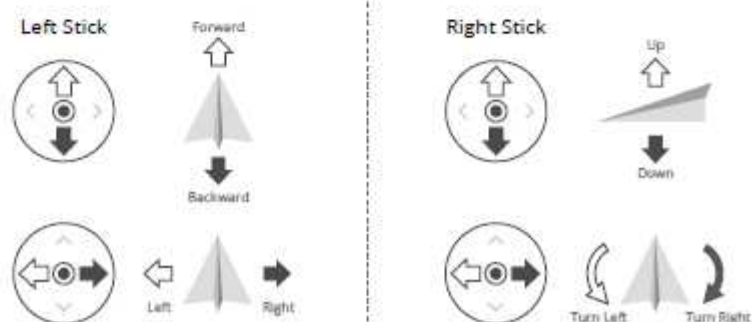
Mode 1



Mode 2



Mode 3



Specifications

Aircraft (Model: CZ3SCL)	
Operating Temperature	-10 to 40°C (14° to 104°F)
O4	
Operating Frequency ^[1]	2.4000-2.4835 GHz 5.170-5.250 GHz 5.725-5.850 GHz
Transmitter Power (EIRP) ^[1]	2.4 GHz: <33 dBm (FCC), 20 dBm (CE/SRRC/MIC) 5.1 GHz: <23 dBm (CE) 5.8 GHz: <33 dBm (FCC), 30 dBm (SRRC), <14 dBm (CE)

Wi-Fi	
Protocol	802.11a/b/g/n/ac
Operating Frequency	2.4000-2.4835 GHz 5.725-5.850 GHz
Transmitter Power (EIRP)	2.4 GHz: <20 dBm (FCC/CE/SRRC/MIC) 5.8 GHz: <20 dBm (FCC/SRRC), <14 dBm (CE)
Bluetooth	
Protocol	Bluetooth 5.2
Operating Frequency	2.4000-2.4835 GHz
Transmitter Power (EIRP)	<10 dBm
Remote Controller (Model: RC151)	
Operating Temperature	-10 to 40°C (14° to 104°F)
O4	
Operating Frequency ^[1]	2.4000-2.4835 GHz 5.170-5.250 GHz 5.725-5.850 GHz
Transmitter Power (EIRP) ^[1]	2.4 GHz: <33 dBm (FCC), <20 dBm (CE/SRRC/MIC) 5.1 GHz: <23 dBm (CE) 5.8 GHz: <33 dBm (FCC), 14 dBm (CE), <30 dBm (SRRC)
Intelligent Flight Battery (BW234-4276-14.76)	
Charging Temperature	5 to 40°C (41° to 104° F)
Capacity	4276 mAh
Standard Voltage	14.6 V

[1] 5.170-5.250 GHz can be used only in countries and regions where permitted by local laws and regulations.

FCC Compliance Notice

Supplier's Declaration of Conformity

Product name: DJI AIR 3S

Model Number: CZ3SCL

Responsible Party: DJI Research LLC

Responsible Party Address: 17301 Edwards Road, Cerritos, CA 90703

Website: www.dji.com

We, DJI Research LLC., being the responsible party, declares that the above mentioned model was tested to demonstrate complying with all applicable FCC rules and regulations.

This device complies with Part 15 of the FCC Rules. Operation is subject to the following two conditions: (1) This device may not cause harmful interference, and (2) This device must accept any interference received, including interference that may cause undesired operation.

Any changes or modifications not expressly approved by the party responsible for compliance could void the user's authority to operate the equipment.

This equipment has been tested and found to comply with the limits for a Class B digital device, pursuant to part 15 of the FCC Rules. These limits are designed to provide reasonable protection against harmful interference in a residential installation. This equipment generates, uses and can radiate radio frequency energy and, if not installed and used in accordance with the instructions, may cause harmful interference to radio communications. However, there is no guarantee that interference will not occur in a particular installation. If this equipment does cause harmful interference to radio or television reception, which can be determined by turning the equipment off and on, the user is encouraged to try to correct the interference by one or more of the following measures:

- Reorient or relocate the receiving antenna.
- Increase the separation between the equipment and receiver.
- Connect the equipment into an outlet on a circuit different from that to which the receiver is connected.
- Consult the dealer or an experienced radio/TV technician for help.

RF Exposure Information

The aircraft complies with FCC radiation exposure limits set forth for an uncontrolled environment. In order to avoid the possibility of exceeding the FCC radio frequency exposure limits, human proximity to the antenna shall not be less than 20cm during normal operation. This transmitter must not be co-located or operating in conjunction with any other antenna or transmitter.

ISED Compliance Notice

CAN ICES-003 (B) / NMB-003(B)

This device contains licence-exempt transmitter(s)/receiver(s) that comply with Innovation, Science and Economic Development Canada's licence-exempt RSS(s). Operation is subject to the following two conditions: (1) This device may not cause interference. (2) This device must accept any interference, including interference that may cause undesired operation of the device.

L'émetteur/récepteur exempt de licence contenu dans le présent appareil est conforme aux CNR d'Innovation, Sciences et Développement économique Canada applicables aux appareils radio exempts de licence. L'exploitation est autorisée aux deux conditions suivantes : (1) L'appareil ne doit pas produire de brouillage; (2) L'appareil doit accepter tout brouillage radioélectrique subi, même si le brouillage est susceptible d'en compromettre le fonctionnement.

This aircraft complies with RSS-102 radiation exposure limits set forth for an uncontrolled environment. This equipment should be installed and operated with minimum distance 20cm between the radiator and your body. This transmitter must not be co-located or operating in conjunction with any other antenna or transmitter.

Cet équipement est conforme aux limites d'exposition aux radiations CNR-102 établies pour un environnement non contrôlé. Cet équipement doit être installé et utilisé avec une distance minimale de 20 cm entre le radiateur et votre corps.



EU Compliance Statement: SZ DJI TECHNOLOGY CO., LTD. hereby declares that this device (DJI AIR 3S) is in compliance with the essential requirements and other relevant provisions of the Directive 2014/53/EU.

A copy of the EU Declaration of Conformity is available online at www.dji.com/euro-compliance
EU contact address: DJI GmbH, Industriestrasse 12, 97618, Niederlauer, Germany

GB Compliance Statement: SZ DJI TECHNOLOGY CO., LTD. hereby declares that this device (DJI AIR 3S) is in compliance with the essential requirements and other relevant provisions of Radio Equipment Regulations 2017.

A copy of the GB Declaration of Conformity is available online at www.dji.com/euro-compliance