
FCC Test Report

Report No.: AGC00924150603FE03

FCC ID : QIFAF-MCB11
APPLICATION PURPOSE : Class II Permissive Change
PRODUCT DESIGNATION : Bluetooth Speaker
BRAND NAME : My Music
MODEL NAME : B39
CLIENT : My Music Group Limited
DATE OF ISSUE : June 20,2015
STANDARD(S)
TEST PROCEDURE(S) : FCC Part 15 Rules
REPORT VERSION : V1.0

Attestation of Global Compliance (Shenzhen) Co., Ltd



CAUTION:

This report shall not be reproduced except in full without the written permission of the test laboratory and shall not be quoted out of context.



Report Revise Record

Report Version	Revise Time	Issued Date	Valid Version	Notes
V1.0	/	July 08,2015	Valid	Original Report

Product Change Record

The original report can be referred to AGC00924130801FE03
Only Radiated Emission below 1GHz was verified for the differences based on the original product.
Compared to original product, Only battery capacity and appearance different, while PCB board and
Bluetooth module are same

TABLE OF CONTENTS

1. VERIFICATION OF CONFORMITY 5

2. GENERAL INFORMATION 6

 2.1. PRODUCT DESCRIPTION.....6

 2.2. TABLE OF CARRIER FREQUENCYS.....6

3. MEASUREMENT UNCERTAINTY..... 7

4. DESCRIPTION OF TEST MODES..... 7

5. SYSTEM TEST CONFIGURATION 7

 5.1. CONFIGURATION OF EUT SYSTEM7

 5.2. EQUIPMENT USED IN EUT SYSTEM7

 5.3. SUMMARY OF TEST RESULTS7

6. TEST FACILITY 8

7. RADIATED EMISSION 9

 7.1. MEASUREMENT PROCEDURE9

 7.2. TEST SETUP 11

 7.3. TEST RESULT 12

APPENDIX A: PHOTOGRAPHS OF TEST SETUP 14

APPENDIX B: PHOTOGRAPHS OF EUT 15

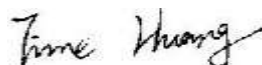
1. VERIFICATION OF CONFORMITY

Applicant	My Music Group Limited
Address	Room2026 , Global Logistics Service Center, China South City, Pinghu Town, Long Gang District, Shenzhen 518111, China
Manufacturer	Dongguan Fulun Electronic Co.,Limited
Address	4F,Building A,Huangjinye Industrial Park,No.216Shaxin Road,Keyuan City,Tangxia, Dongguan.CN
Product Designation	Bluetooth Speaker
Brand Name	My Music
Test Model	B39
Date of test	June 19,2015
Deviation	None
Condition of Test Sample	Normal
Report Template	AGCRT-US-BR/RF

We hereby certify that:

The above equipment was tested by Compliance Certification Service(Shenzhen) Inc. The test data, data evaluation, test procedures, and equipment configurations shown in this report were made in accordance with the procedures given in ANSI C63.4 (2009) and the energy emitted by the sample EUT tested as described in this report is in compliance with radiated emission limits of FCC Rules Part 15.247.

Prepared By



Time Huang June 20,2015

Checked By



Forrest Lei June 20,2015

Authorized By



Solger Zhang June 20,2015

2. GENERAL INFORMATION

2.1. PRODUCT DESCRIPTION

The EUT is “Bluetooth Speaker” designed as a “Communication Device”. It is designed by way of utilizing the FHSS technology to achieve the system operation.

A major technical description of EUT is described as following

Operation Frequency	2.402 GHz to 2.480GHz
Bluetooth Version	V3.0
Modulation	GFSK, $\pi/4$ -DQPSK, 8DPSK
Number of channels	79
Hardware Version	V1.0
Software Version	V1.0
Antenna Designation	PCB Antenna
Antenna Gain	0dBi
Power Supply	DC3.7V

2.2. TABLE OF CARRIER FREQUENCIES

Frequency Band	Channel Number	Frequency
2402~2480MHZ	0	2402MHZ
	1	2403MHZ
	:	:
	38	2440 MHZ
	39	2441 MHZ
	40	2442 MHZ
	:	:
	77	2479 MHZ
	78	2480 MHZ

3. MEASUREMENT UNCERTAINTY

Conducted measurement: +/- 2.75dB

Radiated measurement: +/- 3.2dB

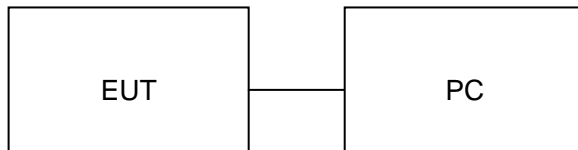
4. DESCRIPTION OF TEST MODES

NO.	TEST MODE DESCRIPTION
1	Normal operation (BT Link)
Note: For Radiated Emission, 3axis were chosen for testing for each applicable mode. The data below 1GHz recorded in this report, the other please refer to original report.	

5. SYSTEM TEST CONFIGURATION

5.1. CONFIGURATION OF EUT SYSTEM

Configure 1: (BT Link)



5.2. EQUIPMENT USED IN EUT SYSTEM

Item	Equipment	Model No.	ID or Specification	Remark
1	Bluetooth Speaker	My Music	B39	EUT
2	PC	Dell	A1465	A.E
3	Control box	N/A	N/A	A.E
4	USB cable	N/A	0.6m,unshielded	A.E

5.3. SUMMARY OF TEST RESULTS

FCC RULES	DESCRIPTION OF TEST	RESULT
§15.209	Radiated Emission	Compliant

6. TEST FACILITY

Site	Compliance Certification Service(Shenzhen) Inc.
Location	No.10-1 Mingkeda Logistics Park, No.18 Huanguan South RD. Guan lan Town,Baoan Distr
FCC Registration No.	441872
Description	The test site is constructed and calibrated to meet the FCC requirements in documents ANSI C63.4:2009.

ALL TEST EQUIPMENT LIST

Radiated Emission Test Site 966(2)					
Name of Equipment	Manufacturer	Model Number	Serial Number	Last Calibration	Due Calibration
PSA Series Spectrum Analyzer	Agilent	E4446A	US44300399	03/01/2015	03/01/2016
EMI TEST RECEIVER	ROHDE&SCHWARZ	ESCI	100783	03/09/2015	03/08/2016
Amplifier	MITEQ	AM-1604-3000	1123808	03/18/2015	03/17/2016
High Noise Amplifier	Agilent	8449B	3008A01838	03/18/2015	03/17/2016
Board-Band Horn Antenna	Schwarzbeck	BBHA 9170	9170-497	07/10/2014	07/09/2015
Bilog Antenna	SCHAFFNER	CBL6143	5082	03/01/2015	03/01/2016
Horn Antenna	SCHWARZBECK	BBHA9120	D286	03/01/2015	03/01/2016
Loop Antenna	COM-POWER	AL-130	121044	09/27/2014	09/26/2015
Turn Table	N/A	N/A	N/A	N.C.R	N.C.R
Controller	Sunol Sciences	SC104V	022310-1	N.C.R	N.C.R
Controller	CT	N/A	N/A	N.C.R	N.C.R
Temp. / Humidity Meter	Anymetre	JR913	N/A	02/28/2015	02/27/2016
Antenna Tower	SUNOL	TLT2	N/A	N.C.R	N.C.R
Test S/W	FARAD	LZ-RF / CCS-SZ-3A2			

7. RADIATED EMISSION

7.1. MEASUREMENT PROCEDURE

1. Configure the EUT according to ANSI C63.4. The EUT was placed on the top of the turntable 0.8 meter above ground. The phase center of the receiving antenna mounted on the top of a height-variable antenna tower was placed 3 meters far away from the turntable.
2. Power on the EUT and all the supporting units. The turntable was rotated by 360 degrees to determine the position of the highest radiation.
3. The height of the broadband receiving antenna was varied between one meter and four meters above ground to find the maximum emissions field strength of both horizontal and vertical polarization.
4. For each suspected emissions, the antenna tower was scan (from 1 M to 4 M) and then the turntable was rotated (from 0 degree to 360 degrees) to find the maximum reading.
5. Set the test-receiver system to Peak or CISPR quasi-peak Detect Function with specified bandwidth under Maximum Hold Mode.
6. For emissions above 1GHz, use 1MHz VBW and RBW for peak reading. Then 1MHz RBW and 10Hz VBW for average reading in spectrum analyzer.
7. When the radiated emissions limits are expressed in terms of the average value of the emissions, and pulsed operation is employed, the measurement field strength shall be determined by averaging over one complete pulse train, including blanking intervals, as long as the pulse train does not exceed 0.1 seconds. As an alternative (provided the transmitter operates for longer than 0.1 seconds) or in cases where the pulse train exceeds 0.1 seconds, the measured field strength shall be determined from the average absolute voltage during a 0.1 second interval during which the field strength is at its maximum values.
8. If the emissions level of the EUT in peak mode was 3 dB lower than the average limit specified, then testing will be stopped and peak values of EUT will be reported for above 1GHz, and the emissions which do not have 3 dB margin will be repeated one by one using the quasi-peak method for below 1GHz.
9. For testing above 1GHz, the emissions level of the EUT in peak mode was lower than average limit (that means the emissions level in peak mode also complies with the limit in average mode), then testing will be stopped and peak values of EUT will be reported, otherwise, the emissions will be measured in average mode again and reported.
10. In case the emission is lower than 30MHz, loop antenna has to be used for measurement and the recorded data should be QP measured by receiver. High - Low scan is not required in this case.

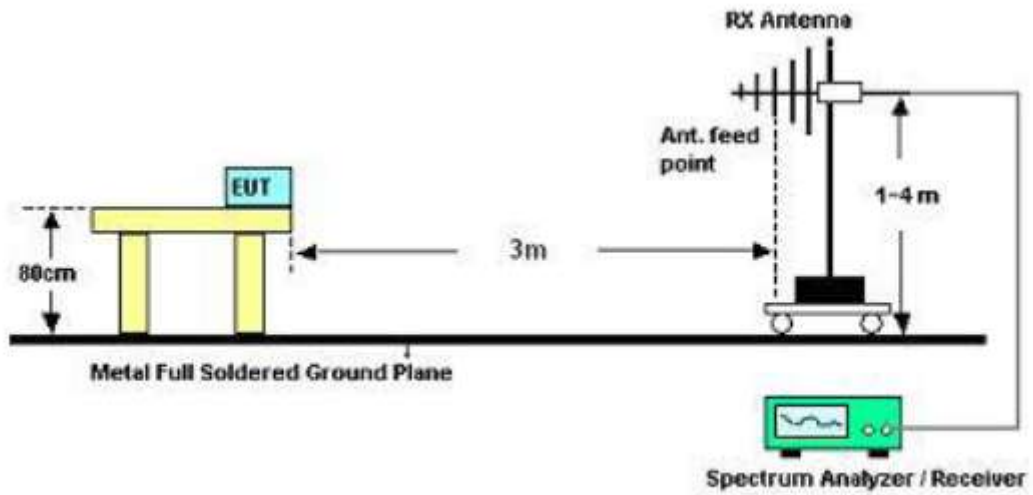
The following table is the setting of spectrum analyzer and receiver.

Spectrum Parameter	Setting
Start ~Stop Frequency	9KHz~150KHz/RB 200Hz for QP
Start ~Stop Frequency	150KHz~30MHz/RB 9KHz for QP
Start ~Stop Frequency	30MHz~1000MHz/RB 120KHz for QP
Start ~Stop Frequency	1GHz~26.5GHz 1MHz/1MHz for Peak, 1MHz/10Hz for Average

Receiver Parameter	Setting
Start ~Stop Frequency	9KHz~150KHz/RB 200Hz for QP
Start ~Stop Frequency	150KHz~30MHz/RB 9KHz for QP
Start ~Stop Frequency	30MHz~1000MHz/RB 120KHz for QP

7.2. TEST SETUP

RADIATED EMISSION TEST SETUP 30MHz-1000MHz



7.3. TEST RESULT

RADIATED EMISSION BELOW 30MHZ

No emission found between lowest internal used/generated frequencies to 30MHz.

RADIATED EMISSION BELOW 1GHZ

RADIATED EMISSION TEST- (30MHZ-1GHZ)-HORIZONTAL



Site: site #1
Limit: FCC Class B 3M Radiation
EUT: Bluetooth Speaker
M/N: B39
Mode: Normal operation
Note:

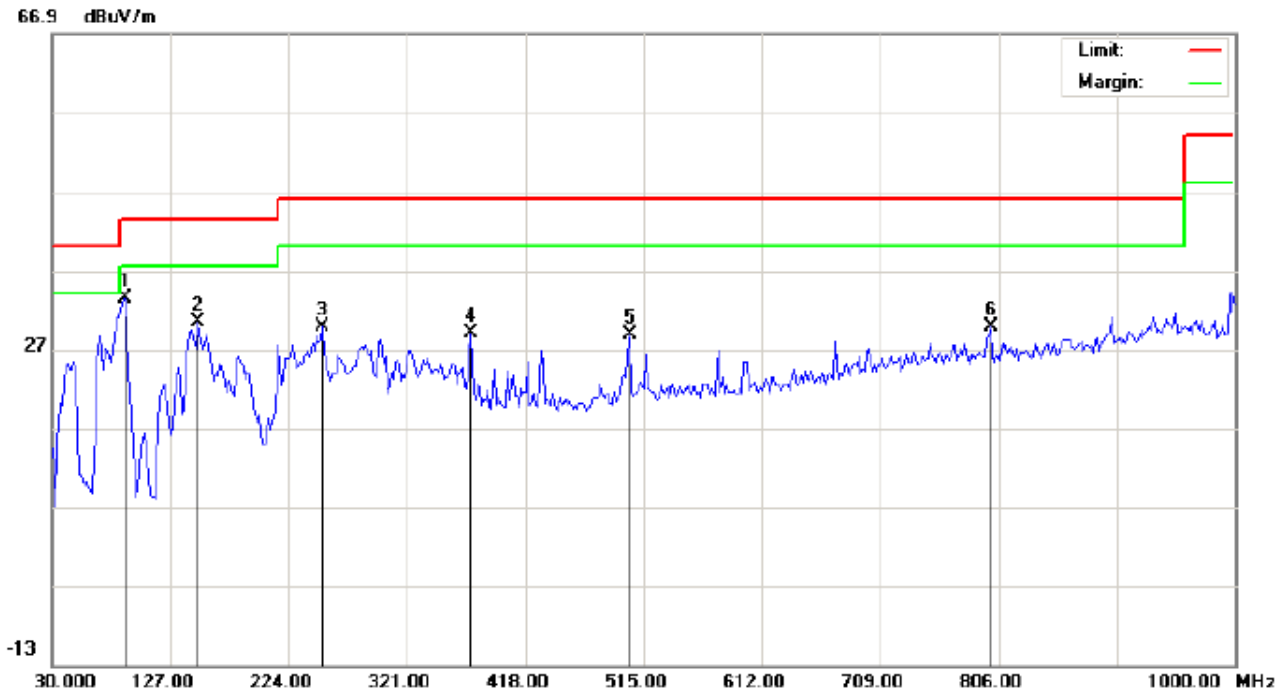
Polarization: *Horizontal*
Power:
Distance: 3m

Temperature: 23.8
Humidity: 58.9 %

No.	Mk	Freq.	Reading	Factor	Measurement	Limit	Over	Detector	Antenna Height	Table Degree	Comment
		MHz	dBuV	dB/m	dBuV/m	dBuV/m	dB		cm	degree	
1		146.4000	10.58	15.24	25.82	43.50	-17.68	peak			
2		264.4166	21.43	14.34	35.77	46.00	-10.23	peak			
3		288.6666	19.49	15.07	34.56	46.00	-11.44	peak			
4	*	387.2833	23.73	18.99	42.72	46.00	-3.28	peak			
5		502.0667	9.14	21.19	30.33	46.00	-15.67	peak			
6		799.5333	1.98	27.31	29.29	46.00	-16.71	peak			

RESULT: PASS

RADIATED EMISSION TEST- (30MHZ-1GHZ) -VERTICAL



Site: site #1

Polarization: **Vertical**

Temperature: 23.8

Limit: FCC Class B 3M Radiation

Power:

Humidity: 58.9 %

EUT: Bluetooth Speaker

Distance: 3m

M/N: B39

Mode: Normal operation

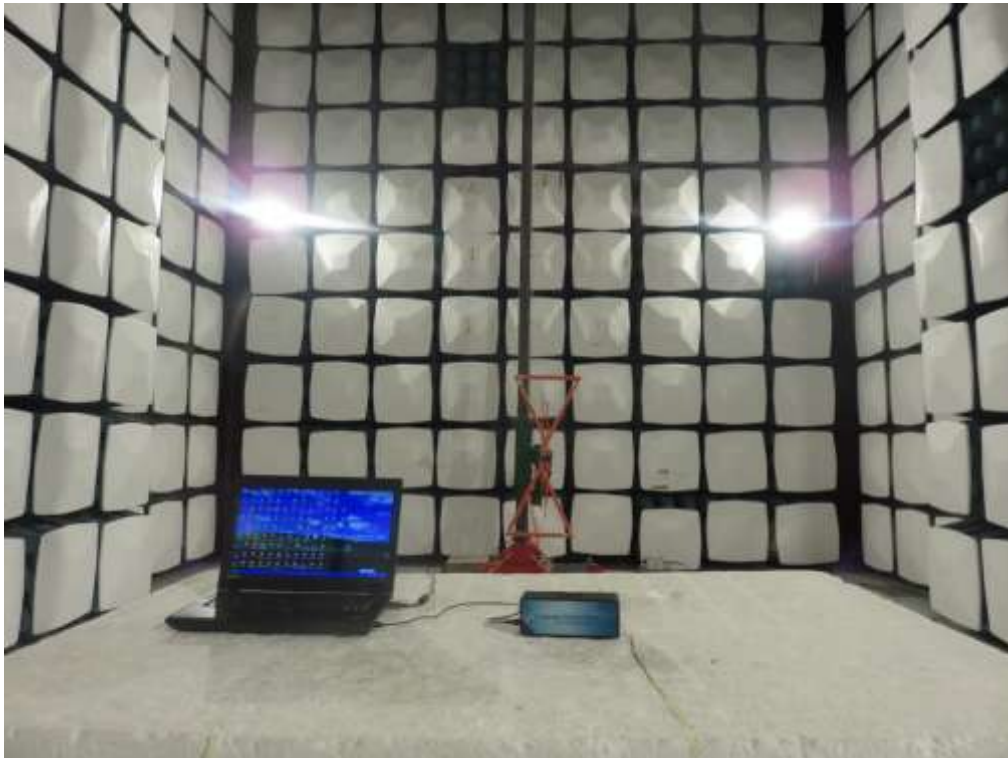
Note:

No.	Mk	Freq.	Reading	Factor	Measurement	Limit	Over	Detector	Antenna Height	Table Degree	Comment
		MHz	dBuV	dB/m	dBuV/m	dBuV/m	dB		cm	degree	
1	*	89.8167	28.14	5.31	33.45	43.50	-10.05	peak			
2		149.6333	15.13	15.26	30.39	43.50	-13.11	peak			
3		251.4833	15.77	13.94	29.71	46.00	-16.29	peak			
4		372.7333	10.18	18.89	29.07	46.00	-16.93	peak			
5		503.6833	7.52	21.23	28.75	46.00	-17.25	peak			
6		799.5333	2.48	27.31	29.79	46.00	-16.21	peak			

RESULT: PASS**Note:** 1. Factor=Antenna Factor + Cable loss, Margin=Measurement-Limit.

2. The "Factor" value can be calculated automatically by software of measurement system.

APPENDIX A: PHOTOGRAPHS OF TEST SETUP
FCC RADIATED EMISSION TEST SETUP



APPENDIX B: PHOTOGRAPHS OF EUT

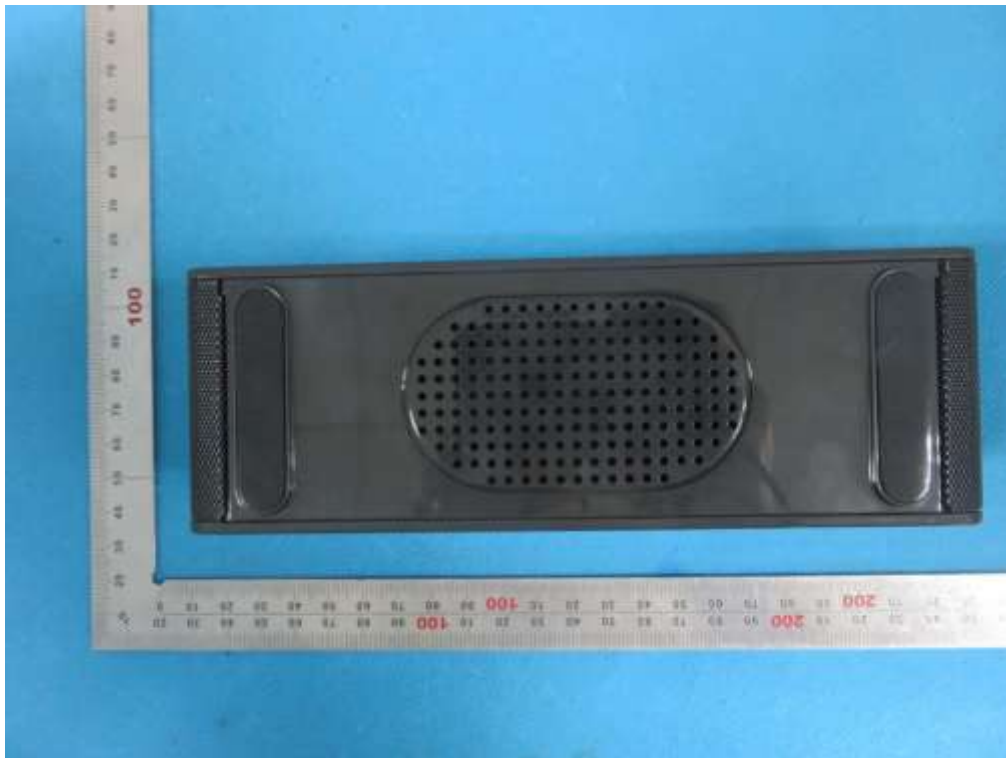
All VIEW OF EUT



TOP VIEW OF EUT



BOTTOM VIEW OF EUT



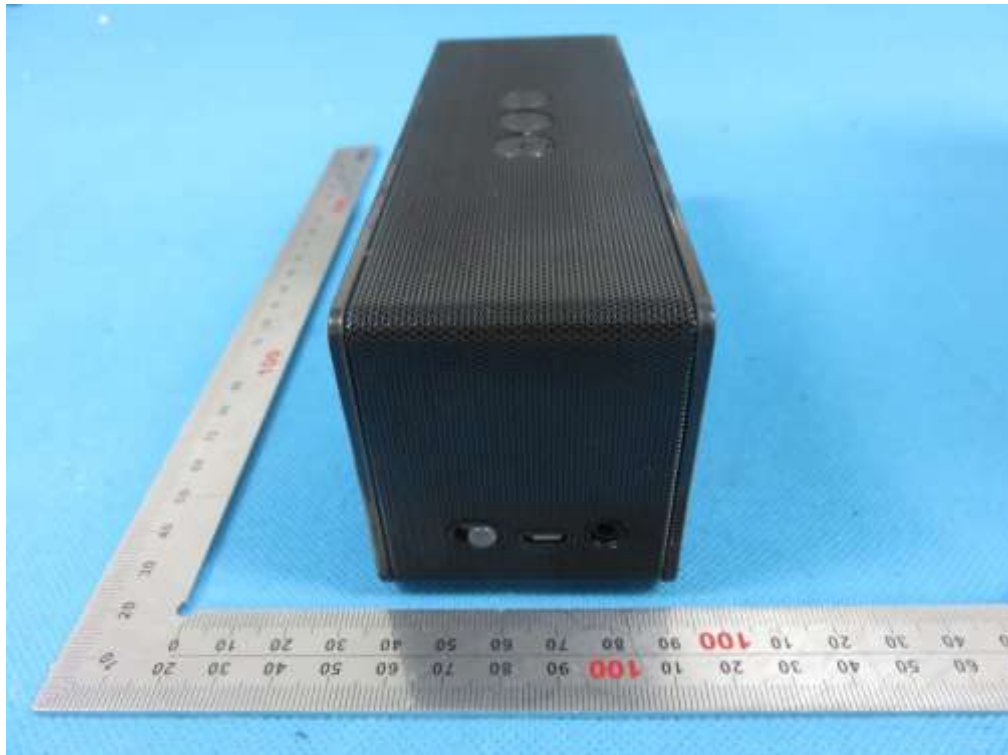
FRONT VIEW OF EUT



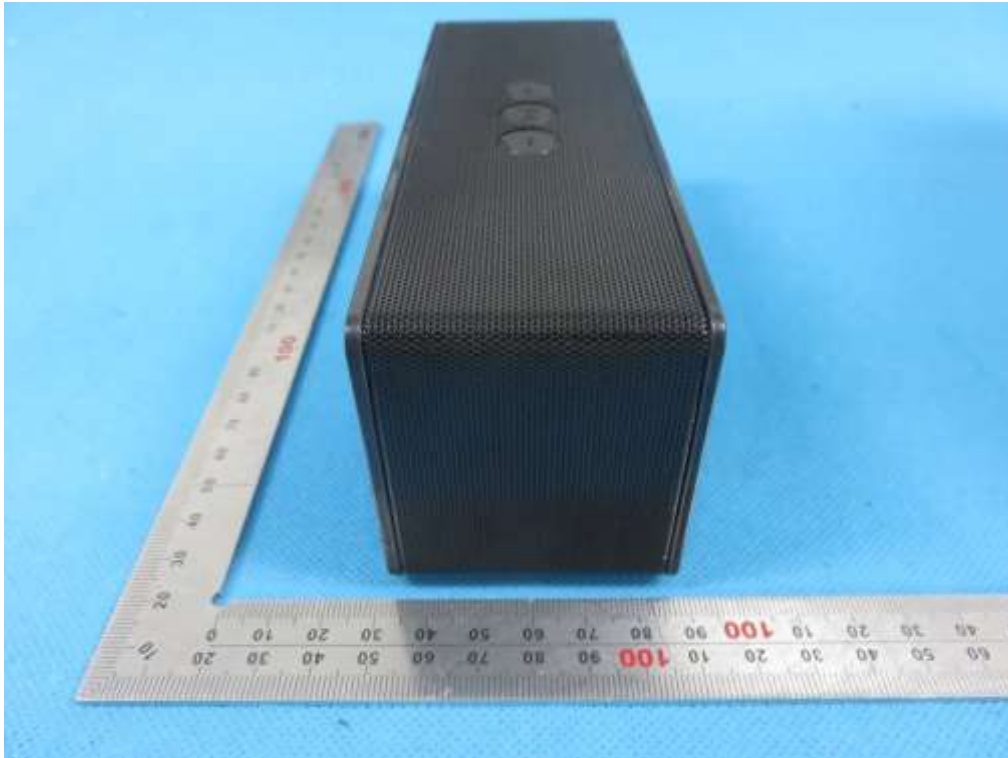
BACK VIEW OF EUT



LEFT VIEW OF EUT



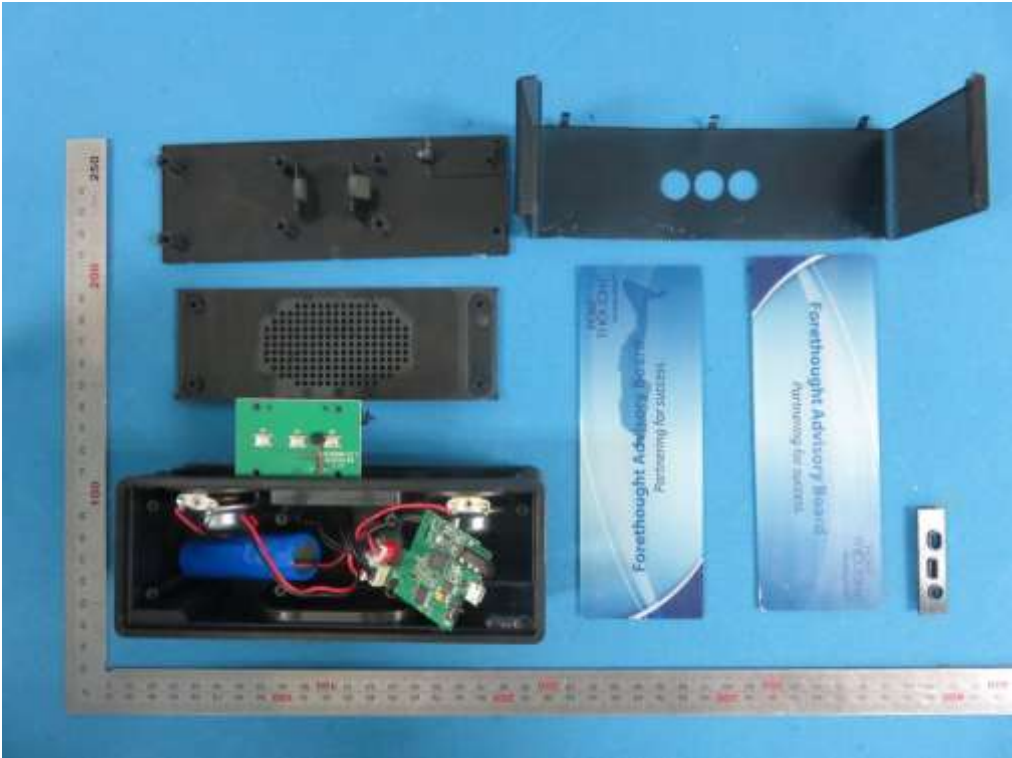
RIGHT VIEW OF EUT



VIEW OF EUT (Port)



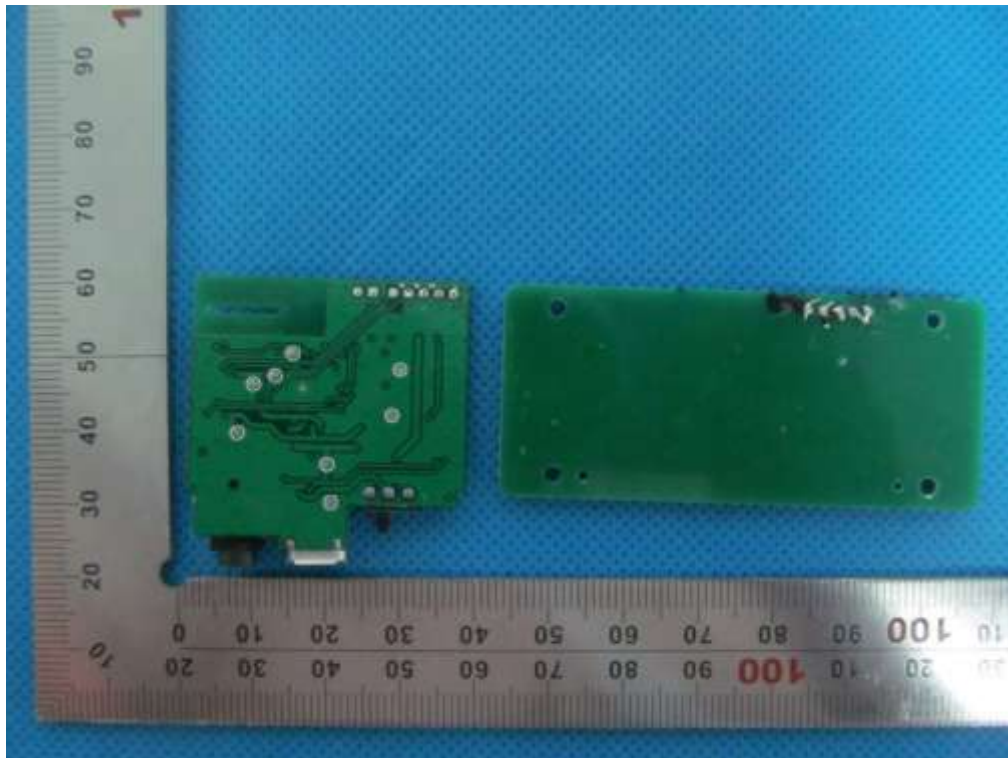
OPEN VIEW OF EUT



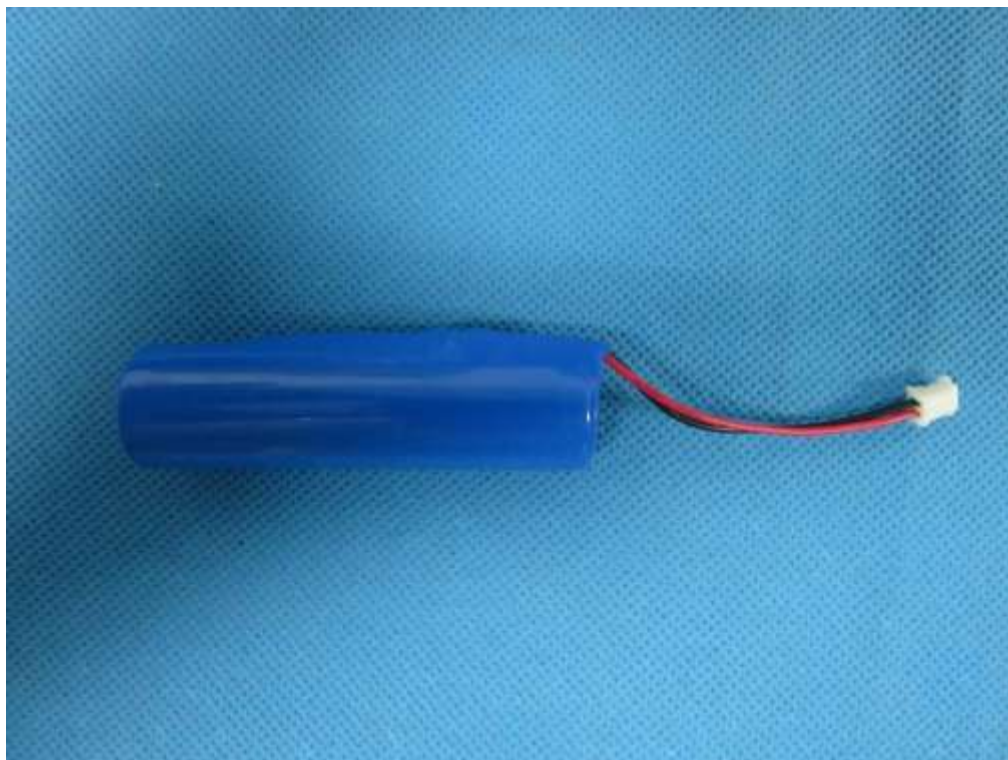
INTERNAL VIEW OF EUT-1



INTERNAL VIEW OF EUT-2



BATTERY OF EUT



----END OF REPORT----