

REV	BY	DESCRIPTION	DATE	APPROVED
1	LC	PROTOTYPE RELEASE	12/16/05	
2	LC	REVISED	4/7/06	MM

NOTES: UNLESS OTHERWISE SPECIFIED

1. SUGGESTED ASSEMBLY SEQUENCE:

MOUNT POLE MOUNT BRACKET (ITEM 2) TO REAR MOUNTS OF CPE USING TWO 1/4-20 X 1.0 BOLTS, LOCK AND FLAT WASHERS (ITEMS 17, 22 AND 23).

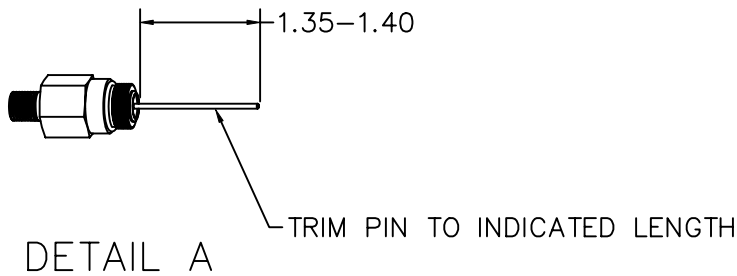
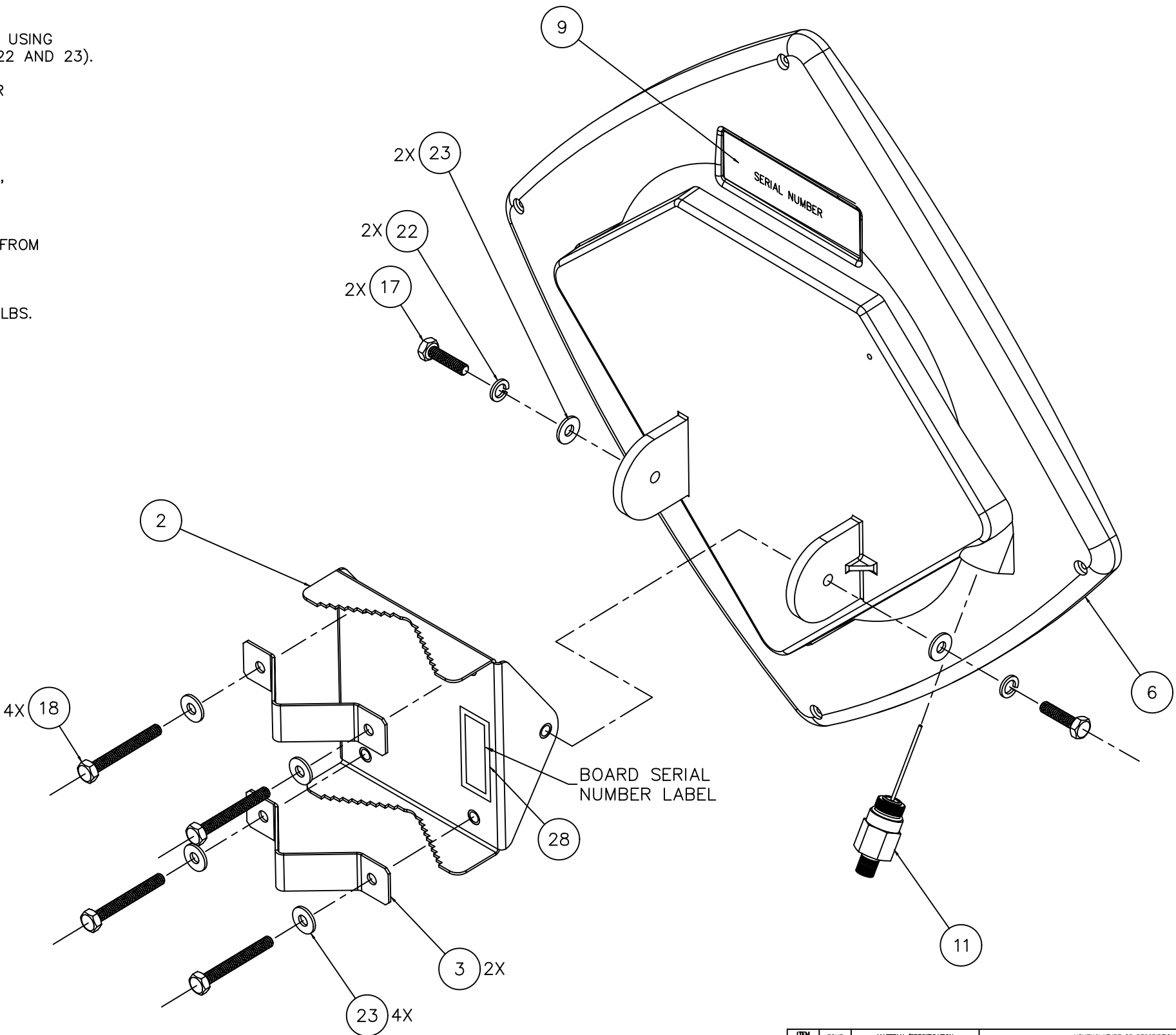
MOUNT "V" BRACKET (ITEM 3) TO POLE MOUNT PLATE USING FOUR 1/4-20 X 2.0 BOLTS AND FLAT WASHERS (ITEMS 18 AND 23)

APPLY SERIAL LABEL (ITEM 9) TO DEPRESSION ON CPE BASE.

RECORD BOARD SERIAL NUMBER AND LABEL UNIT PER PROCEDURE, PLACE BOARD LABEL ONTO POLE MOUNT BRACKET AND COVER WITH CLEAR WATER PROOF LABEL (ITEM 28).

TRIM CENTER STUB ON F CONNECTOR TO 1.35 1.40 INCHES LONG FROM BASE OF CONNECTOR. SEE DETAIL A.

APPLY PERMANENT THREAD LOCK TO THREADS OF F CONNECTOR. INSTALL F CONNECTOR (ITEM 11) INTO HOUSING, TORQUE TO 50 INLBS.



ITEM NO.	ZONE	MATERIAL/SPECIFICATION	NOMENCLATURE OR DESCRIPTION	PART OR IDENTIFICATION NUMBER	QTY REQD
LIST OF MATERIAL OR PARTS LISTS					
3RD ANGLE PROJECTION					
MATERIAL:		SPECIFICATIONS: ALL DIMENSIONS ARE IN MILLIMETERS. DIMENSIONS IN [XXX] ARE IN INCHES. TOLERANCES: ANGLES: ± 1° X.: ± 1.5 [X : ± .06] .X: ± 0.5 [XX : ± .020] .XX: ± 0.15 [XXX : ± .005]			
FINISH:		ALL SURFACES 63 EXCEPT AS NOTED			
DO NOT SCALE		DRAWN: L.CAMPBELL DATE: 12/16/05			
DASH NO.		ENGINEER: DATE:			
NEXT ASSY		MFG: DATE:			
USED ON		Q.A.: DATE:			
APPLICATION		SIZE CLASS CODE D			
		DRAWING NUMBER 931-36550-001			
		SCALE: 1/1 FILE No. SHEET 1 OF 3			
		REV 2			

PROPRIETARY INFORMATION  
THE INFORMATION CONTAINED HEREIN IS  
TO BE USED FOR BIDDING/MANUFACTURING  
PURPOSES TO THE RECIPIANT ONLY. IT  
SHALL NOT BE DISCLOSED OR DIVULGED TO  
ANY THIRD PARTY WITHOUT THE PRIOR  
WRITTEN CONSENT OF ARCHWAVE INC.