

CERTIFICATION

FCC ID : 2BCI5-HW-HS-01

FCC Information

This device complies with Part 15 of the FCC Rules. Operation is subject to the following two conditions:

- (1) This Device may not cause harmful interface, and
- (2) This Device must accept any interference received, including interference that may cause undesired operation.

Note : This equipment has been tested and found to comply with the limits for CLASS B digital device, pursuant to Part 15 FCC Rules. These limits are designed to provide reasonable protection against harmful interference when the equipment is operated in a commercial environment. This equipment generates, uses and can radiate radio frequency energy and, if not installed and used in accordance with the instructions, may cause harmful interference to radio communications. However, there is no guarantee that interference will not occur in a particular installation. If this equipment does cause harmful interference to radio or television reception, which can be determined by turning the equipment off and on, the user is encouraged to try correct the interference by one or more of the following measures:

- 1.1. Reorient or relocate the receiving antenna.
- 1.2. Increase the separation between the equipment and receiver.
- 1.3. Connect the equipment into an outlet on a circuit different from that to which receiver is connected.
- 1.4. Consult the dealer or experienced radio/TV technician for help.

WARNING

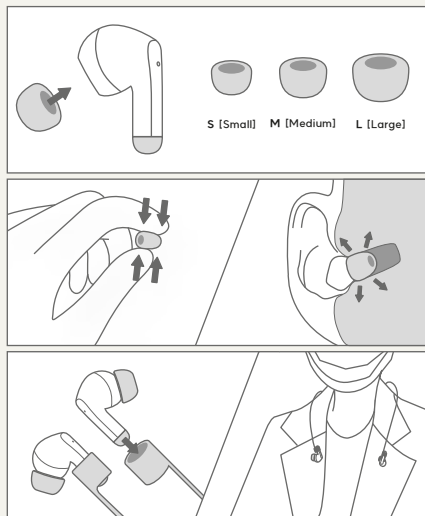
Changes or modifications not expressly approved by the manufacturer could void the user's authority to operate the equipment.

CAUTION: Exposure to Radio Frequency Radiation.

To comply with FCC's RF exposure limits for general population / uncontrolled exposure, the antenna(s) used for this transmitter must be installed to provide a separation distance of at least 20cm from all persons and must not be co-located or operating in conjunction with any other antenna or transmitter.

PACKAGE & INSTRUCTIONS

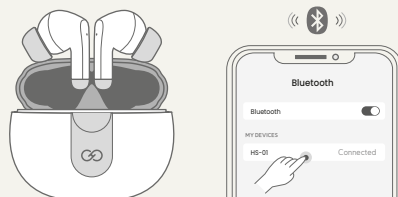
HealingStone comes with a smart earplug and its accessories, including dedicated charging cable, dedicated eartips (size : Small, Medium and Large) and earplug tie string.



- 1) Remove the smart earplug and its accessories from the box.
- 2) Remove HEALINGSTONE from its charging case.
- 3) HEALINGSTONE comes with medium-size eartips. Dedicated eartips are made of memory foam. Pinch the tip with fingers before plugging it into the earhole. As the eartip inflates to its original shape, it will be tightly plugged into the earhole. If you feel deafened, you have appropriately placed HEALINGSTONE in your ears.
- 4) If you plug your earholes with HEALINGSTONE and do not feel deafened, replace the eartip with one that fits your earhole.
- 5) Use the earplug tie string to make sure that you do not lose an earplug. Use the string to connect the left and the right pieces of HEALINGSTONE. You can wear them like a neckless when you are not using them.

SINGLE MODE

Additional Feature: Music Listening



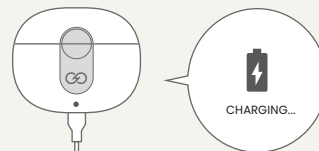
You can connect HealingStone to your smartphone or tablet PC through Bluetooth

Take HEALINGSTONE out of the charging case and identify HEALINGSTONE ("HS-01") on the pairing screen of the device you wish to connect. Once connected, HEALINGSTONE will make a voice announcement. If you are a dentist or staff, member do not pair HEALINGSTONE in the treatment room - use HEALINGSTONE only in the talk or the block mode without pairing it to another device in the treatment room.

When HEALINGSTONE is paired with another device in the block mode and the music is played, the sound-blocking effect becomes greater. The dental technicians can thus focus better on their lab work. In addition, Playing music in the block mode can effectively reduce a patient's dentophobia, - it lowers the VAS score.

CHARGING METHOD

Charge by USB-C type cable



Use a USB-C type charging cable to charge HEALINGSTONE. HEALINGSTONE is charged when it is docked in its charging case.

Made by doctor of dental surgery
HEALINGSTONE
MEDICAL SMART EARPLUG

CAUTION

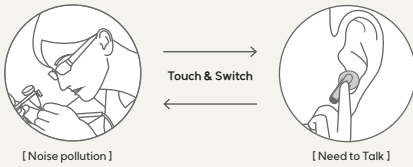
- a) HEALINGSTONE, the smart earplug, must be used in compliance with the appropriate specification requirements. Purchasers are advised to pay attention to the effects of the use environment on HEALINGSTONE. For a successful connection, the distance between HEALINGSTONE and the devices connected thereto should be no greater than 10 meters.
- b) If it does not appropriately connect or fails to communicate, please do not attempt to disassemble HEALINGSTONE without authorization. If purchasers do so without authorization, the product warranty will become void.
- c) Make sure HEALINGSTONE is sufficiently charged so that it functions properly. Separate the cable from HEALINGSTONE if you are not charging it, or if it is fully charged.
- d) The charged battery will be discharged over time, if it is not used. The capacity and lifespan of the battery may be reduced if it is placed under extreme heat or cold, such as the inside of cars parked outdoors in summer or winter. Healingstone may not operate temporarily, if its battery is too hot or cold.

SAFETY & HANDLING

Make sure you comply with the following to avoid overheating, combustion, or explosion in the following cases:

- a) A battery is so swollen that it can be visually identified and can be dangerous. Contact the manufacturer or the seller immediately.
- b) Use the standard vehicle charger or a charger designated by HEALINGSTONE when charging.
- c) Do not leave HEALINGSTONE near a fire.
(Never place HEALINGSTONE inside a microwave oven.)
- d) Do not leave HEALINGSTONE inside a closed car in summer.
- e) Do not store or use HEALINGSTONE in a hot and humid space, such as a sauna.
- f) Do not place HEALINGSTONE on the blanket, electric blanket, or carpet and use it for a long time.
- g) Do not keep HEALINGSTONE in a sealed space for a long time as it is powered on.
- h) Be careful not to allow any metal object, such as a necklace, coin, key, or watch, to touch the charging terminal of the battery.
- i) Use the secondary lithium battery warranted by the manufacturer of the portable device.
- j) Do not attempt to disassemble, pressurize, or penetrate HEALINGSTONE.
- k) Do not apply any abnormal force to HEALINGSTONE, such as dropping it from an elevated place.
- l) Do not expose HEALINGSTONE to temperatures above 60 degrees Celsius.
- m) Do not allow HEALINGSTONE to come in contact with moisture.
- n) Do not clean HEALINGSTONE with any organic solvent or agent that contains organic solvent.
- o) Do not burn the battery in fire - it may explode.

MODE SELECTION & SWITCHING



The mode is not selected at the beginning of the wear.
After wearing, mode change is as following
: initial state (mode un-selected) > talk mode ↔ block mode.

You can switch between block mode and talk mode easily.
You can use block mode and talk mode without Bluetooth pairing.
So we strongly recommend that you use the two modes
without Bluetooth pairing in clinic condition.

PRODUCT SPEC

Model Number	HS-01
Bluetooth (Chipset)	v 5.2
Driver Unit	10mm
Earbud Battery Capacity	40mAh/3.7v
Case Battery Capacity	300mAh/3.7v
Playing time	72h(depend on user condition)
Charging time	Charging 1h~2h
Charging port	USB C-type
Waterproof	IPX-5
Product Size	59 x 48 x 25mm

BLOCK MODE

Intensive noise control mode

When you put on HEALINGSTONE for the first time, push its upper [left/right] side for one second or more – a voice message then says “Block mode” and the mode will be changed.



Applied technology and features

Intensive noise-control technology is applied to the block mode. Under the block mode, the noise is reduced much more than under the talk mode, and you can engage in basic communication to a degree.

Applications (Usage situation)

- For dental clinic staffs:** The block mode is recommended when the noise is very loud. HealingStone under the block mode can protect your ears when the hand piece is operating. Use the block mode when you wish to focus on the treatment. It is especially effective when the dentist protects ears in a noisy pediatric dental environment where children are crying.
- For dental technicians:** Use this mode for dental technicians when working in a lab.
- For patients:** Be sure to use this mode when a patient wears the product and receives dental treatment.

TALK MODE

Communication mode

When touching the upper [left/right] side of HEALINGSTONE, the mode changes from the block mode to the talk mode with a voice announcement



Applied technology and features

Talk mode is equipped with artificial intelligence noise control and communication enhancement technology to facilitate communication while the high frequency noise of medical (dental) handpieces is reduced. In Talk mode, you can hear the surrounding sounds well and communicate smoothly even while wearing earplugs.

Applications (Usage situation)

- Use the talk mode when you need to communicate.
- The talk mode allows dentists and their staffs to effectively talk to each other.