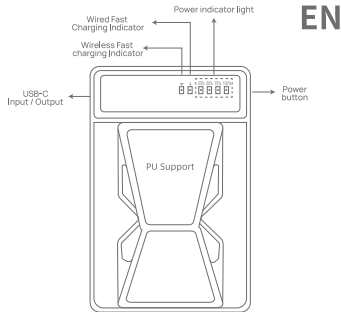
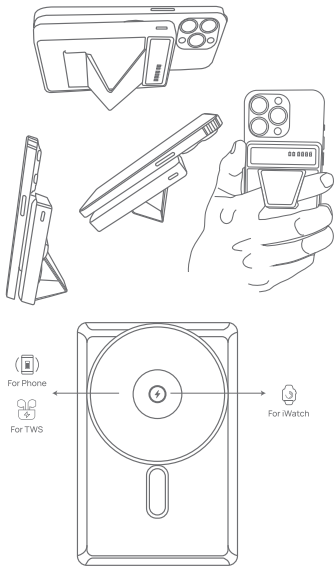
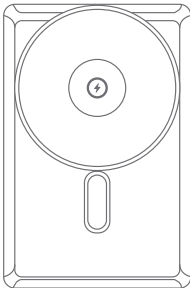


3 in 1

Magnetic wireless power bank

User Manual

Model: KH69



Parameters

- USB-C Port Power: Input 18W Output 20W
- Wireless Output: 5W/7.5W/10W/15W
- iWatch Output: 2.5W
- Product List: Power Bank x1, User Manual x1, Data cable x1

REMARK: When using any two Port outputs (including wireless charging) at the same time, the fast charging mode (9V/12V) will be closed automatically and product will enter the normal charging mode(5V), the wireless switch to 5W automatically.

LED Status

Orange constant light: usb-cinput /output fast charging
Green constant light: 7.5w/10w/15w wireless fast charging
Green light flashing: wireless FOD foreign object detection
White constant light: power indicator

Activation Function Description

- When the machine enters the standby mode, press the power indicator once(0,5 seconds) to display the current power. One represents 25% of the power. After 30 seconds, the machine will enter the standby mode once.
- When the mobile phone is charged to 0%, the mobile power will be automatically turned off, and the LED display mode is the same as the power off.
- Click the key: start the mobile power, the green light is on, and the wireless charging function is turned on; Double click.
- Click the button: start the mobile power supply and turn on the wireless charging function; Green light and orange light flash alternately.
- Key: turn off the wireless charging function under the condition of power on.

Charging Function Instructions

- 1/ 2/ 3/ 4 LED light color is white.
- When charging to the power bank, the LED is flashed to display the incremental battery capacity. Refer to the relationship between LED display and battery capacity.
- When all the 4 LED lights are on, the product is fully charged.
- The charging function is working properly when the charger output is 5V to 12V.

Description Function Instructions

- Press the power button once to start the mobile power supply. When the mobile phone is connected to the power supply, the corresponding LED lights will be on for a long time, and the number of lights will decrease as the power becomes lower.
- When the battery voltage is lower than 3.1V, the last light flashes for low power alarm.

- When the battery voltage is below 3.0 ± When the voltage is 0.1V, the output will stop, and the LED light will go out after discharging, when you unplug the phone to interrupt charging, the indicator light will be on for 30 seconds, then it will go out and enter the standby mode. Press the power button to start the mobile power and the power indicator is on, then the wireless charging output can help the device with wireless charging.
- Foreign object detection: when a foreign object is found during wireless charging, the green light flashes and the charging is stopped. The metal foreign object needs to be removed before charging.

Warning

- Improper use may harm the battery and other parts;
- When using the power supply for the first time, the standard 5V-1A / 2A charger must be used to charge the power supply;
- Keep the power supply dry and ventilated;
- The power pack contains organic combustibles, if the power supply is not used correctly, it will break, leak, overheat and so on, which will permanently damage the battery. The power supply has built-in safety protection device;
- Do not collide or break, causing short circuit of power supply;
- Do not use the power near the fire or stove or the place with the temperature higher than 60 ° C, Because the high temperature will melt the plastic shell;
- If putting into water, the inside safety devices will be damaged and power bank stops working, or cause over-heating, fire even explosion;
- Don't extrude the power bank with heavy objects;
- Improper adapter may causing over-heating, burn, or explosion;
- Any hiddendanger, please stop using immediately;
- Before using wireless charging, please ensure that there is no metal foreign matter between the mobile phone (including the mobile phone protective case) and the wireless charging.

FCC Warning

This device complies with part 15 of the FCC Rules. Operation is subject to the following two conditions:

- This device may not cause harmful interference.
- This device must accept any interference received, including interference that may cause undesired operation.

Any Changes or modifications not expressly approved by the party responsible for compliance could void the user's authority to operate the equipment. This equipment has been tested and found to comply with the limits for a Class B digital device, pursuant to part 15 of the FCC Rules. These limits are designed to provide reasonable protection against harmful interference in a residential installation. This equipment generates uses and can radiate radio frequency energy and, if not installed and used in accordance with the instructions, may cause harmful interference to radio communications. However, there is no guarantee that interference will not occur in a particular installation. If this equipment does cause harmful interference to radio or television reception, which can be determined by turning the equipment off and on, the user is encouraged to try to correct the interference by one or more of the following measures:

- Reorient or relocate the receiving antenna.
- Increase the separation between the equipment and receiver.
- Connect the equipment into an outlet on a circuit different from that to which the receiver is connected.
- Consult the dealer or an experienced radio/TV technician for help.

FCC RF exposure statement

The device has been evaluated to meet general RF exposure requirement. The device can be used in portable exposure condition without restriction.



Konformitätserklärung

Ningbo Youdian Electronic Technology Co., Ltd. erklärt hiermit, dass Produkttyp die Richtlinien 2014/53/EU erfüllt. Der vollständige Text der EU-Konformitätserklärung ist unter der folgenden Internetadresse verfügbar:
<https://www.kpontech.com>
Ningbo Youdian Electronic Technology Co., Ltd.
Address: Room680-10hao, No.1 Building, Meishanyanchang Beilun District, Ningbo, Zhejiang, China

Dieses Produkt erfüllt die Anforderungen der Europäischen Gemeinschaft an Funkstörungen.

	Verwendung nur in Innenbereichen
	Dieses Symbol bedeutet, dass das Produkt nicht als Hausmüll entsorgt werden darf. Stattdessen ist es an der jeweiligen Sammelstelle für das Recycling von Elektro- und Elektronikgeräten abzugeben.

KPON
KEEP POWER ON

Email: service@kpontech.com
Website: <https://www.kpontech.com>