

MODEL GD-1212-U

Fig.3

General - Shows internal view of model.

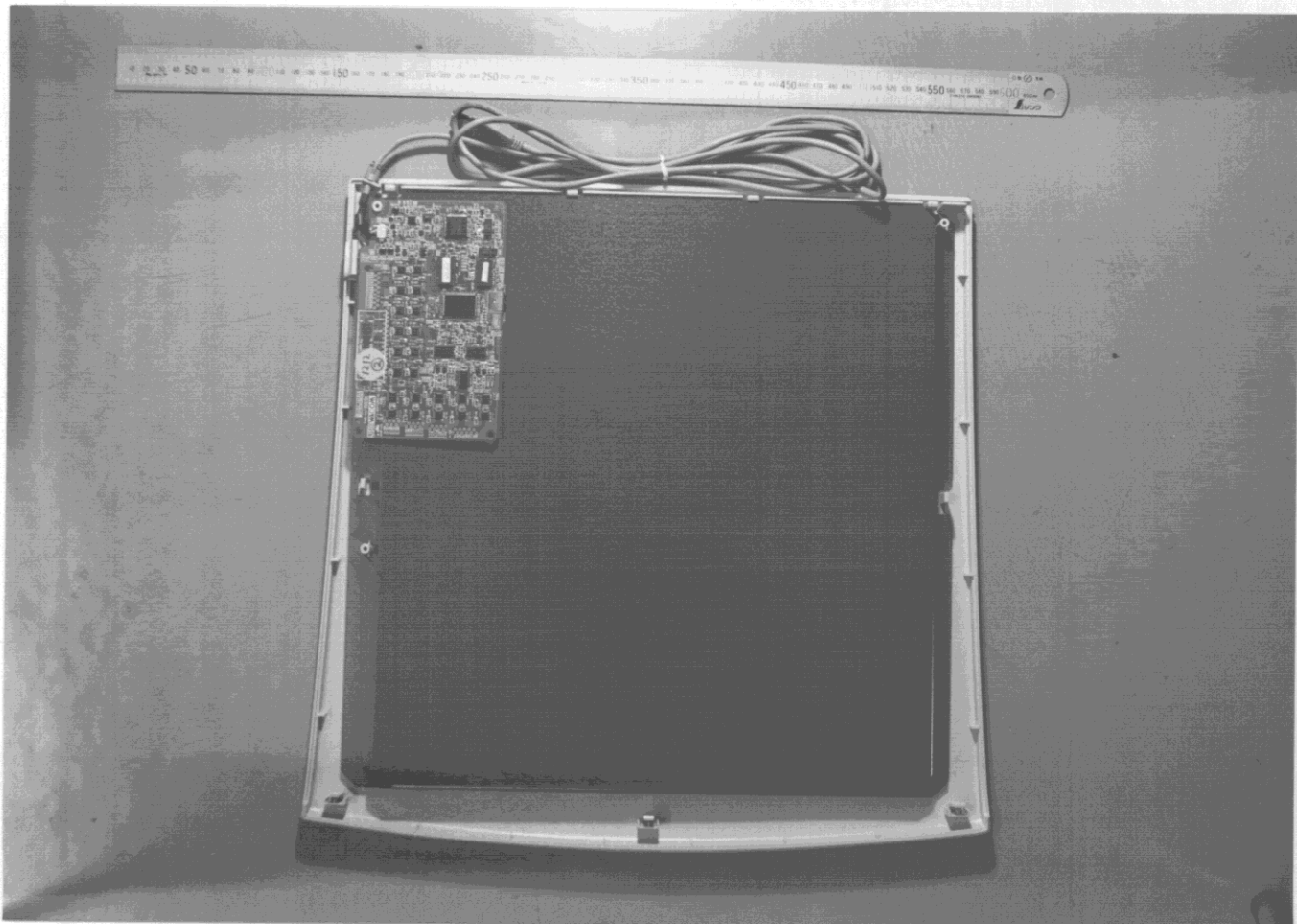
Small P.W.B - Control circuit.

Big P.W.B - Sensor Board.

Separator - 10mm thick

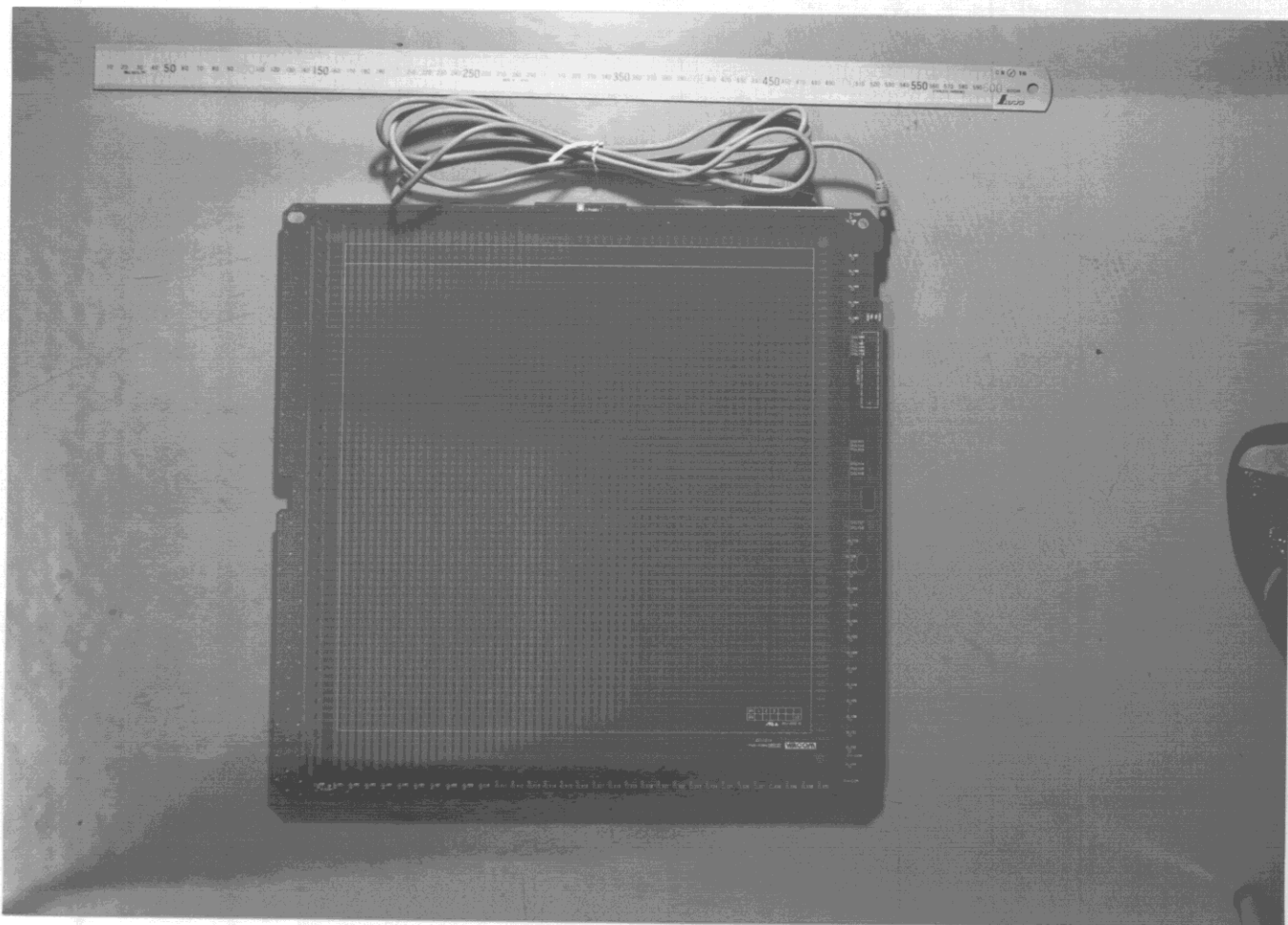
Cable - 2.5m(8.2ft)with Ferrite Core

Shield sheet - Fe-Si Alloy sheet. 0.2mm thick.



MODEL GD-1212-U      Fig.4

General - Shows front view of P.W.B for Sensor Board.



MODEL GD-1212-U

Fig.3

General - Shows internal view of model.

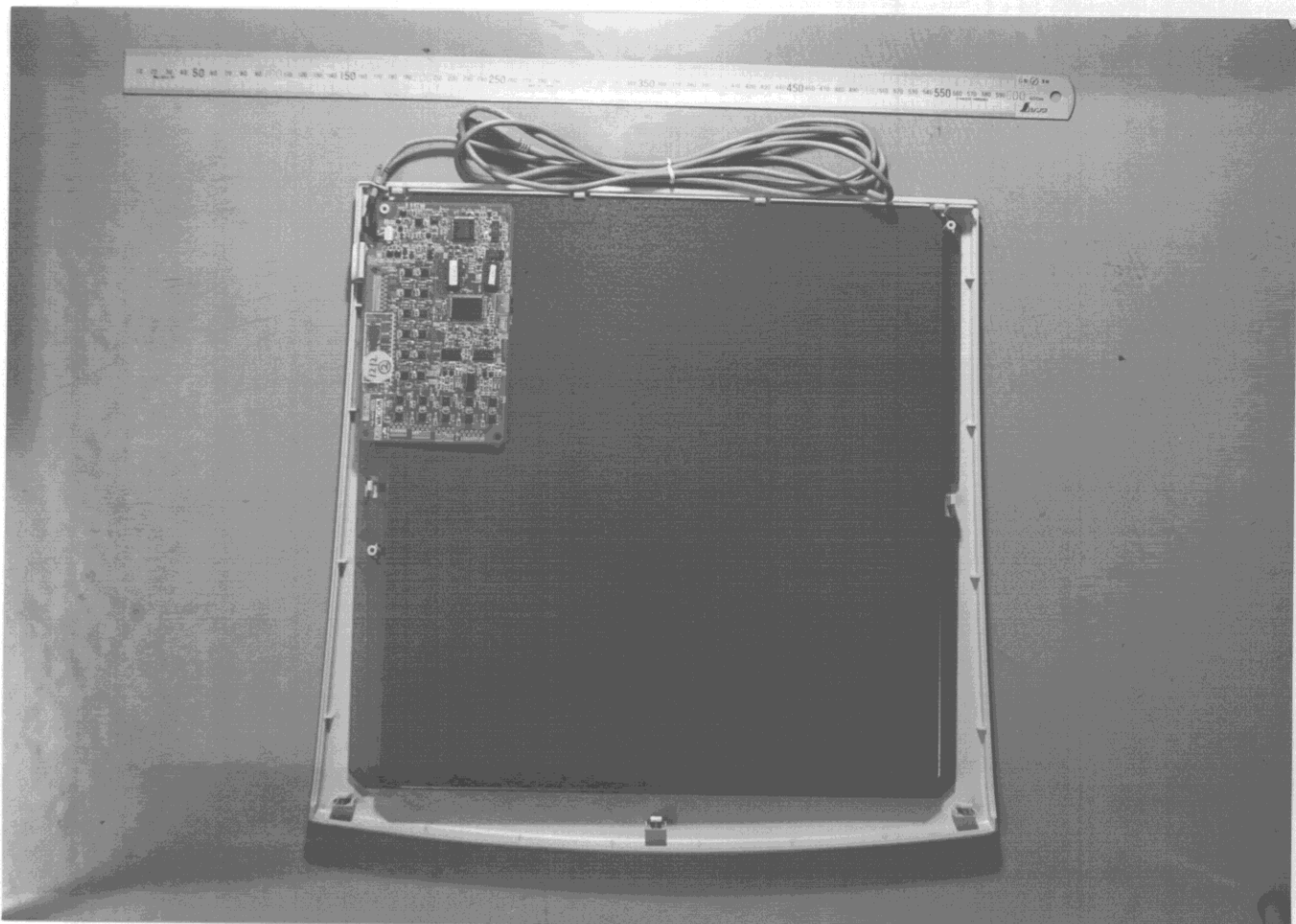
Small P.W.B - Control circuit.

Big P.W.B - Sensor Board.

Separator - 10mm thick

Cable - 2.5m(8.2ft)with Ferrite Core

Shield sheet - Fe-Si Alloy sheet. 0.2mm thick.



MODEL GD-1212-U      Fig.4

General - Shows front view of P.W.B for Sensor Board.

