

APPENDIX A - SAR MEASUREMENT DATA

Itronix Corporation FCC ID: KBCIX260MPIA555BT

SAM Phantom; Flat Section; Position: (90°,0°)

Probe: ET3DV6 - SN1387; ConvF(4.60,4.60,4.60); Crest factor: 1.0

Muscle 2450 MHz: $\sigma = 1.98$ mho/m $\epsilon_r = 50.3$ $\rho = 1.00$ g/cm³

Coarse: Dx = 15.0, Dy = 15.0, Dz = 10.0

Cube 5x5x7

SAR (1g): 1.21 mW/g, SAR (10g): 0.528 mW/g

Back of LCD - Display Closed (CDMA Dipole Antenna Parallel to Planar Phantom - Stowed Position)

0.0 cm Separation Distance from Back of LCD to Planar Phantom

IX260 Rugged Laptop PC

Cisco DSSS WLAN Card MPI-350 Mini-PCI with Internal Antenna

Co-located with Sierra Wireless AirCard 555 Dual Band CDMA Modem Card (PCS) with External Dipole Antenna

and Mitsumi WML-C11N Bluetooth Transmitter with Internal Antenna

Single Transmit - WLAN Transmitter only

CW Mode

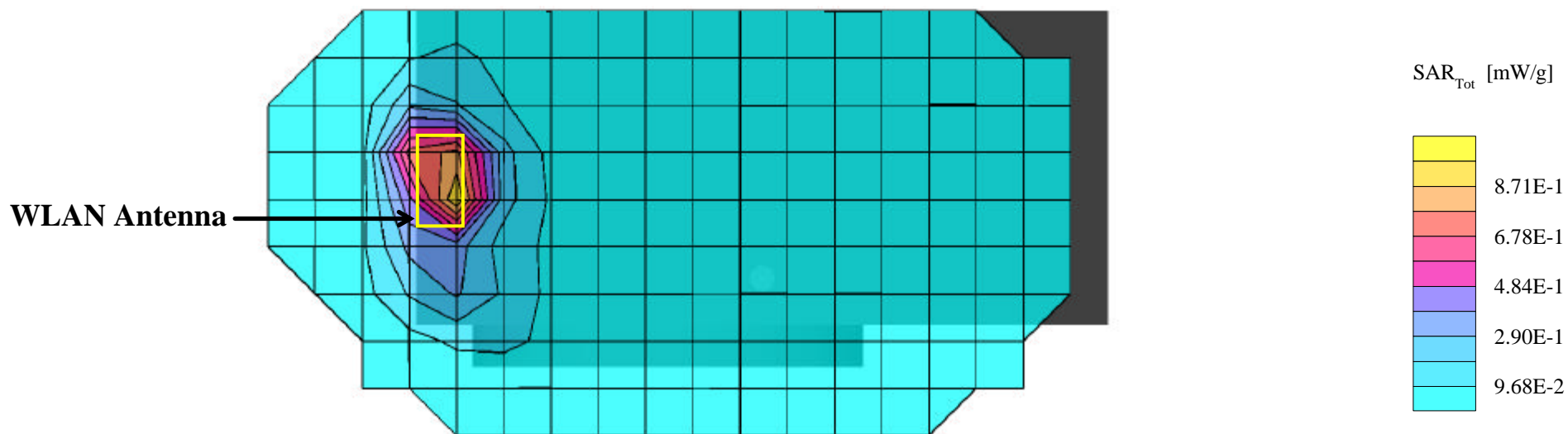
Channel 6 (2437 MHz)

Conducted Power: 21.2 dBm

Ambient Temp: 23.9°C; Fluid Temp: 23.9°C

Date Tested: August 29, 2003

WLAN Peak SAR Evaluation



Itronix Corporation FCC ID: KBCIX260MPIA555BT

SAM Phantom; Flat Section; Position: (90°,0°)

Probe: ET3DV6 - SN1387; ConvF(4.60,4.60,4.60); Crest factor: 1.0

Muscle 2450 MHz: $\sigma = 1.98$ mho/m $\epsilon_r = 50.3$ $\rho = 1.00$ g/cm³

Coarse: Dx = 15.0, Dy = 15.0, Dz = 10.0

Cube 5x5x7

SAR (1g): 1.18 mW/g, SAR (10g): 0.513 mW/g

Back of LCD - Display Closed (CDMA Dipole Antenna Parallel to Planar Phantom - Stowed Position)

0.0 cm Separation Distance from Back of LCD to Planar Phantom

IX260 Rugged Laptop PC

Cisco DSSS WLAN Card MPI-350 Mini-PCI with Internal Antenna

Co-located with Sierra Wireless AirCard 555 Dual Band CDMA Modem Card (PCS) with External Dipole Antenna

and Mitsumi WML-C11N Bluetooth Transmitter with Internal Antenna

Single Transmit - WLAN Transmitter only

CW Mode

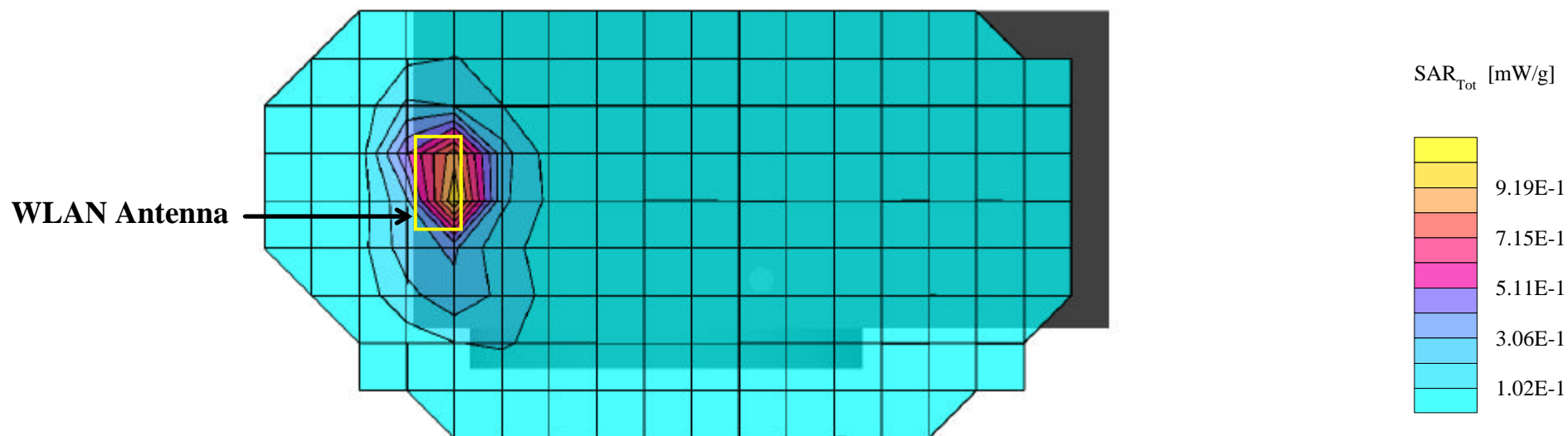
Channel 1 (2412MHz)

Conducted Power: 21.2 dBm

Ambient Temp: 23.9°C; Fluid Temp: 23.9°C

Date Tested: August 29, 2003

WLAN Peak SAR Evaluation



Itronix Corporation FCC ID: KBCIX260MPIA555BT

SAM Phantom; Flat Section; Position: (90°,0°)

Probe: ET3DV6 - SN1387; ConvF(4.60,4.60,4.60); Crest factor: 1.0

Muscle 2450 MHz: $\sigma = 1.98$ mho/m $\epsilon_r = 50.3$ $\rho = 1.00$ g/cm³

Coarse: Dx = 15.0, Dy = 15.0, Dz = 10.0

Cube 5x5x7

SAR (1g): 0.980 mW/g, SAR (10g): 0.427 mW/g

Back of LCD - Display Closed (CDMA Dipole Antenna Parallel to Planar Phantom - Stowed Position)

0.0 cm Separation Distance from Back of LCD to Planar Phantom

IX260 Rugged Laptop PC

Cisco DSSS WLAN Card MPI-350 Mini-PCI with Internal Antenna

Co-located with Sierra Wireless AirCard 555 Dual Band CDMA Modem Card (PCS) with External Dipole Antenna

and Mitsumi WML-C11N Bluetooth Transmitter with Internal Antenna

Single Transmit - WLAN Transmitter only

CW Mode

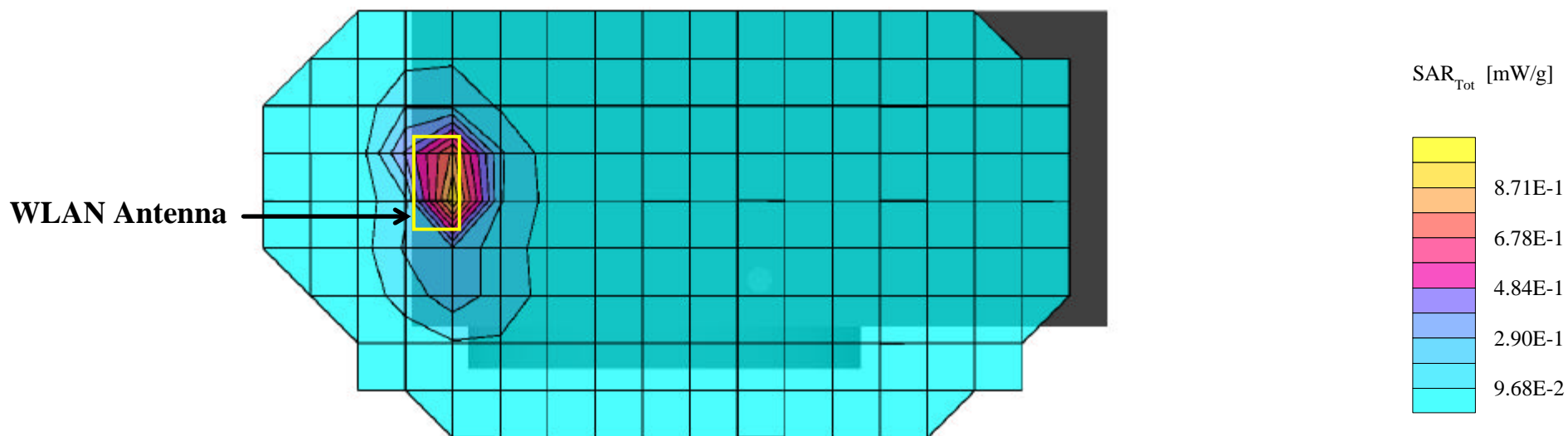
Channel 11 (2462 MHz)

Conducted Power: 21.1 dBm

Ambient Temp: 23.9°C; Fluid Temp: 23.9°C

Date Tested: August 29, 2003

WLAN Peak SAR Evaluation



Itronix Corporation FCC ID: KBCIX260MPIA555BT

SAM Phantom; Flat Section; Position: (90°,0°)

Probe: ET3DV6 - SN1387; ConvF(4.60,4.60,4.60); Crest factor: 1.0

Muscle 2450 MHz: $\sigma = 1.98$ mho/m $\epsilon_r = 50.3$ $\rho = 1.00$ g/cm³

Coarse: Dx = 15.0, Dy = 15.0, Dz = 10.0

Cube 5x5x7

SAR (1g): 1.29 mW/g, SAR (10g): 0.603 mW/g

Back of LCD - Display Closed (CDMA Dipole Antenna Parallel to Planar Phantom - Stowed Position)

0.0 cm Separation Distance from Back of LCD to Planar Phantom

IX260 Rugged Laptop PC

Cisco DSSS WLAN Card MPI-350 Mini-PCI with Internal Antenna

Co-located with Sierra Wireless AirCard 555 Dual Band CDMA Modem Card (PCS) with External Dipole Antenna

and Mitsumi WML-C11N Bluetooth Transmitter with Internal Antenna

Simultaneous Transmit with co-located WLAN and PCS CDMA Transmitters

CW Mode

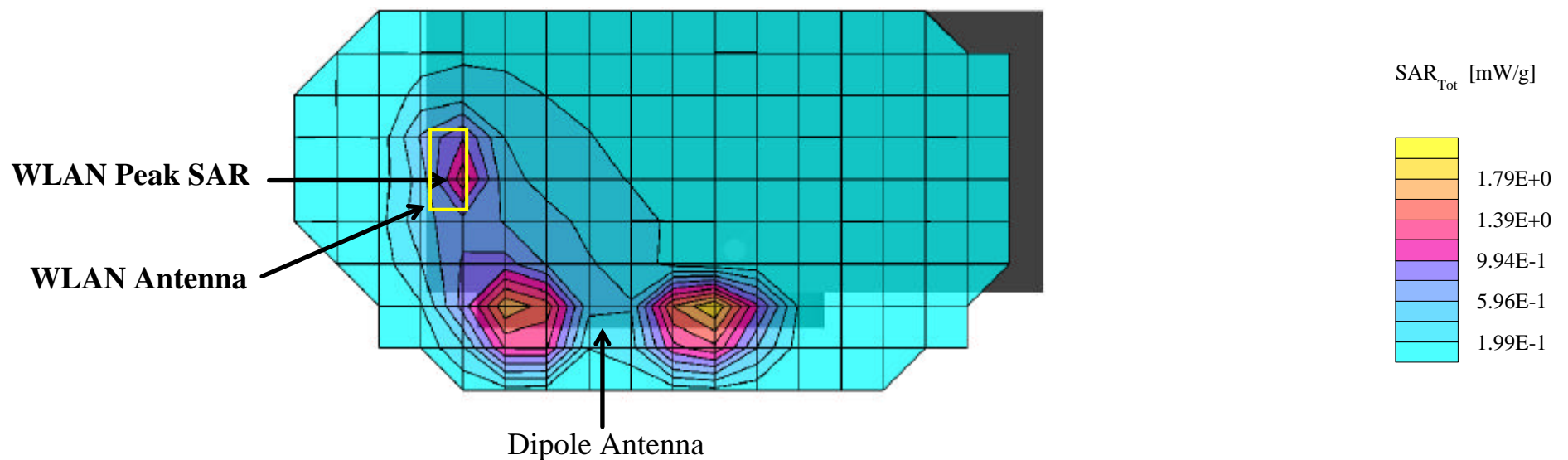
Channel 6 (2437 MHz)

Conducted Power: 21.2 dBm

Ambient Temp: 23.9°C; Fluid Temp: 23.9°C

Date Tested: August 29, 2003

WLAN Peak SAR Evaluation



Itronix Corporation FCC ID: KBCIX260MPIA555BT

SAM Phantom; Flat Section; Position: (90°,0°)

Probe: ET3DV6 - SN1387; ConvF(4.60,4.60,4.60); Crest factor: 1.0

Muscle 2450 MHz: $\sigma = 1.98$ mho/m $\epsilon_r = 50.3$ $\rho = 1.00$ g/cm³

Coarse: Dx = 15.0, Dy = 15.0, Dz = 10.0

Cube 5x5x7

SAR (1g): 1.28 mW/g, SAR (10g): 0.591 mW/g

Back of LCD - Display Closed (CDMA Dipole Antenna Parallel to Planar Phantom - Stowed Position)

0.0 cm Separation Distance from Back of LCD to Planar Phantom

IX260 Rugged Laptop PC

Cisco DSSS WLAN Card MPI-350 Mini-PCI with Internal Antenna

Co-located with Sierra Wireless AirCard 555 Dual Band CDMA Modem Card (PCS) with External Dipole Antenna

and Mitsumi WML-C11N Bluetooth Transmitter with Internal Antenna

Simultaneous Transmit with co-located WLAN and PCS CDMA Transmitters

CW Mode

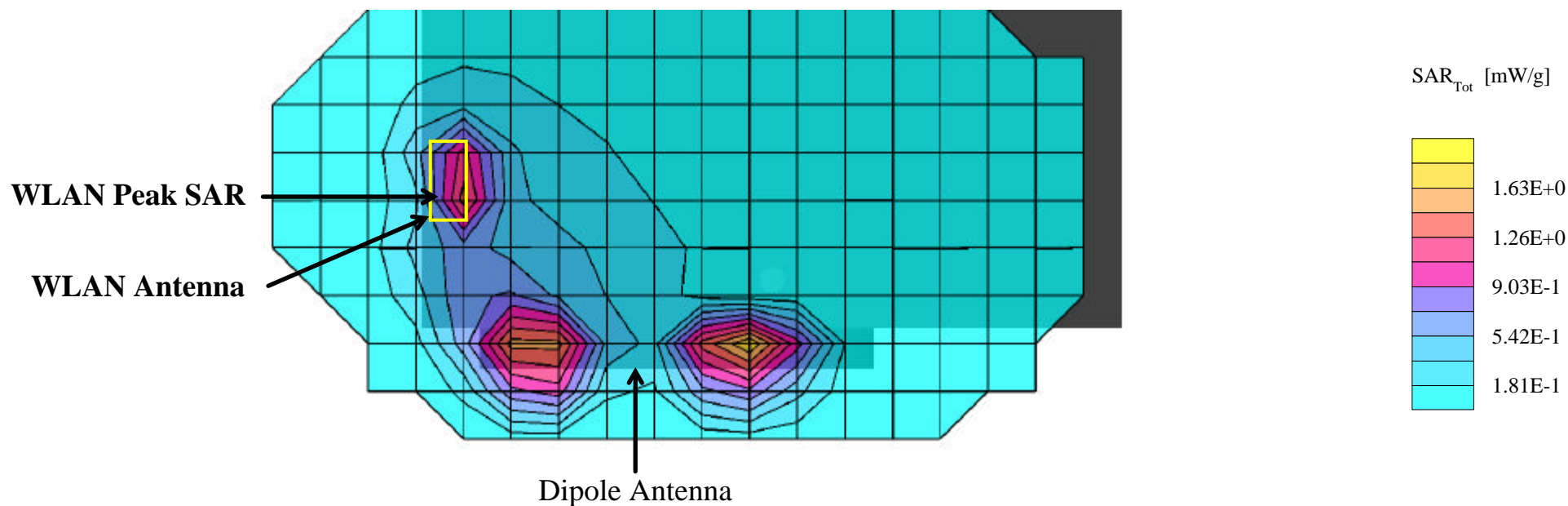
Channel 1 (2412 MHz)

Conducted Power: 21.2 dBm

Ambient Temp: 23.9°C; Fluid Temp: 23.9°C

Date Tested: August 29, 2003

WLAN Peak SAR Evaluation



Itronix Corporation FCC ID: KBCIX260MPIA555BT

SAM Phantom; Flat Section; Position: (90°,0°)

Probe: ET3DV6 - SN1387; ConvF(4.60,4.60,4.60); Crest factor: 1.0

Muscle 2450 MHz: $\sigma = 1.98$ mho/m $\epsilon_r = 50.3$ $\rho = 1.00$ g/cm³

Coarse: Dx = 15.0, Dy = 15.0, Dz = 10.0

Cube 5x5x7

SAR (1g): 1.15 mW/g, SAR (10g): 0.515 mW/g

Back of LCD - Display Closed (CDMA Dipole Antenna Parallel to Planar Phantom - Stowed Position)

0.0 cm Separation Distance from Back of LCD to Planar Phantom

IX260 Rugged Laptop PC

Cisco DSSS WLAN Card MPI-350 Mini-PCI with Internal Antenna

Co-located with Sierra Wireless AirCard 555 Dual Band CDMA Modem Card (PCS) with External Dipole Antenna

and Mitsumi WML-C11N Bluetooth Transmitter with Internal Antenna

Simultaneous Transmit with co-located WLAN and PCS CDMA Transmitters

CW Mode

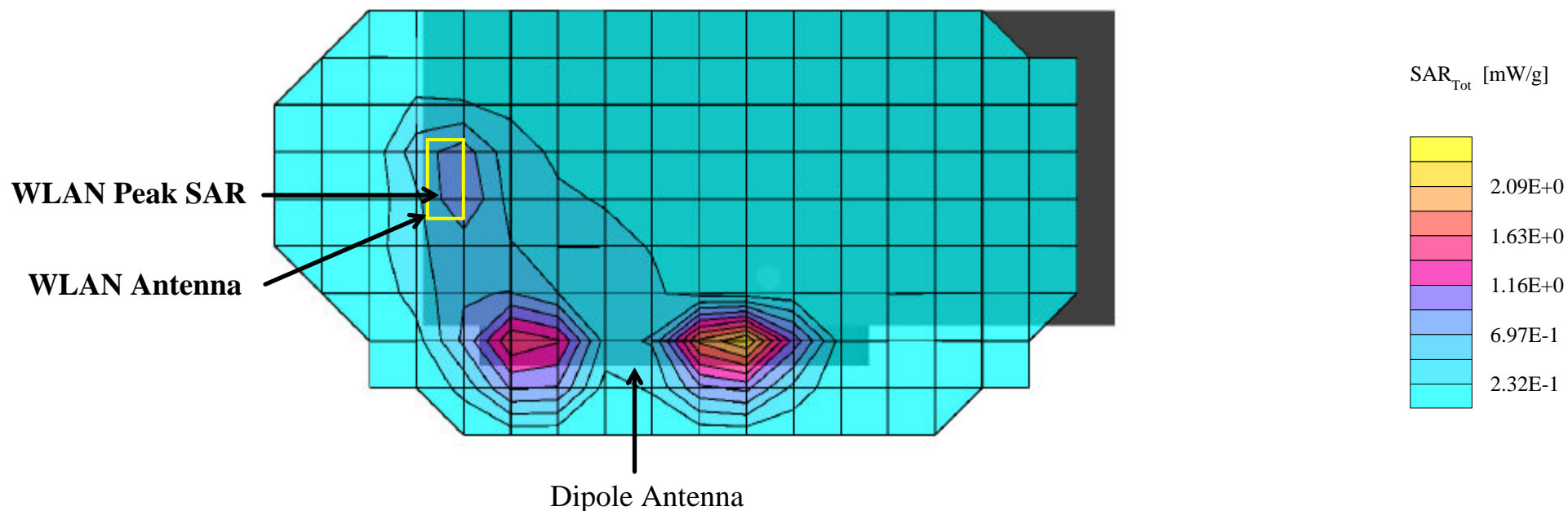
Channel 11 (2462 MHz)

Conducted Power: 21.1 dBm

Ambient Temp: 23.9°C; Fluid Temp: 23.9°C

Date Tested: August 29, 2003

WLAN Peak SAR Evaluation



Itronix Corporation FCC ID: KBCIX260MPIA555BT

SAM Phantom; Flat Section; Position: (90°,0°)

Probe: ET3DV6 - SN1387; ConvF(4.60,4.60,4.60); Crest factor: 1.0

Muscle 2450 MHz: $\sigma = 1.98$ mho/m $\epsilon_r = 50.3$ $\rho = 1.00$ g/cm³

Coarse: Dx = 15.0, Dy = 15.0, Dz = 10.0

Cube 5x5x7

SAR (1g): 1.23 mW/g, SAR (10g): 0.573 mW/g

Back of LCD - Display Closed (CDMA Dipole Antenna Parallel to Planar Phantom - Stowed Position)

0.0 cm Separation Distance from Back of LCD to Planar Phantom

IX260 Rugged Laptop PC

Cisco DSSS WLAN Card MPI-350 Mini-PCI with Internal Antenna

Co-located with Sierra Wireless AirCard 555 Dual Band CDMA Modem Card (PCS) with External Dipole Antenna

and Mitsumi WML-C11N Bluetooth Transmitter with Internal Antenna

Simultaneous Transmit with co-located WLAN, PCS CDMA, and Bluetooth Transmitters

CW Mode

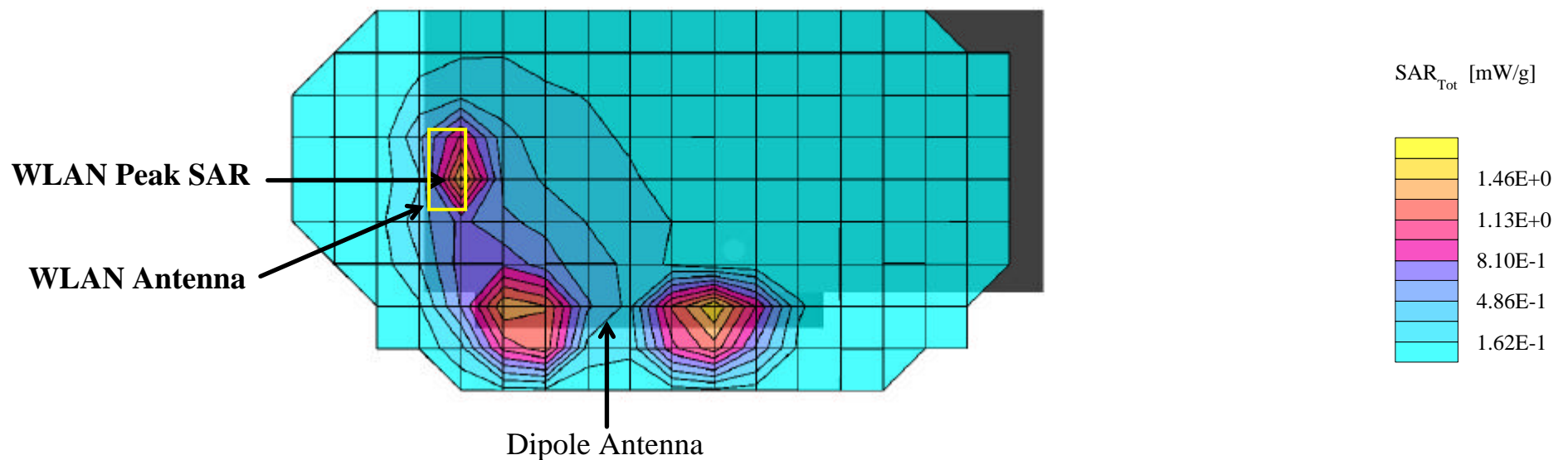
Channel 6 (2437 MHz)

Conducted Power: 21.2 dBm

Ambient Temp: 23.9°C; Fluid Temp: 23.9°C

Date Tested: August 29, 2003

WLAN Peak SAR Evaluation



Itronix Corporation FCC ID: KBCIX260MPIA555BT

SAM Phantom; Flat Section; Position: (90°,0°)

Probe: ET3DV6 - SN1387; ConvF(4.60,4.60,4.60); Crest factor: 1.0

Muscle 2450 MHz: $\sigma = 1.98$ mho/m $\epsilon_r = 50.3$ $\rho = 1.00$ g/cm³

Coarse: Dx = 15.0, Dy = 15.0, Dz = 10.0

Cube 5x5x7

SAR (1g): 1.31 mW/g, SAR (10g): 0.604 mW/g

Back of LCD - Display Closed (CDMA Dipole Antenna Parallel to Planar Phantom - Stowed Position)

0.0 cm Separation Distance from Back of LCD to Planar Phantom

IX260 Rugged Laptop PC

Cisco DSSS WLAN Card MPI-350 Mini-PCI with Internal Antenna

Co-located with Sierra Wireless AirCard 555 Dual Band CDMA Modem Card (PCS) with External Dipole Antenna

and Mitsumi WML-C11N Bluetooth Transmitter with Internal Antenna

Simultaneous Transmit with co-located WLAN, PCS CDMA, and Bluetooth Transmitters

CW Mode

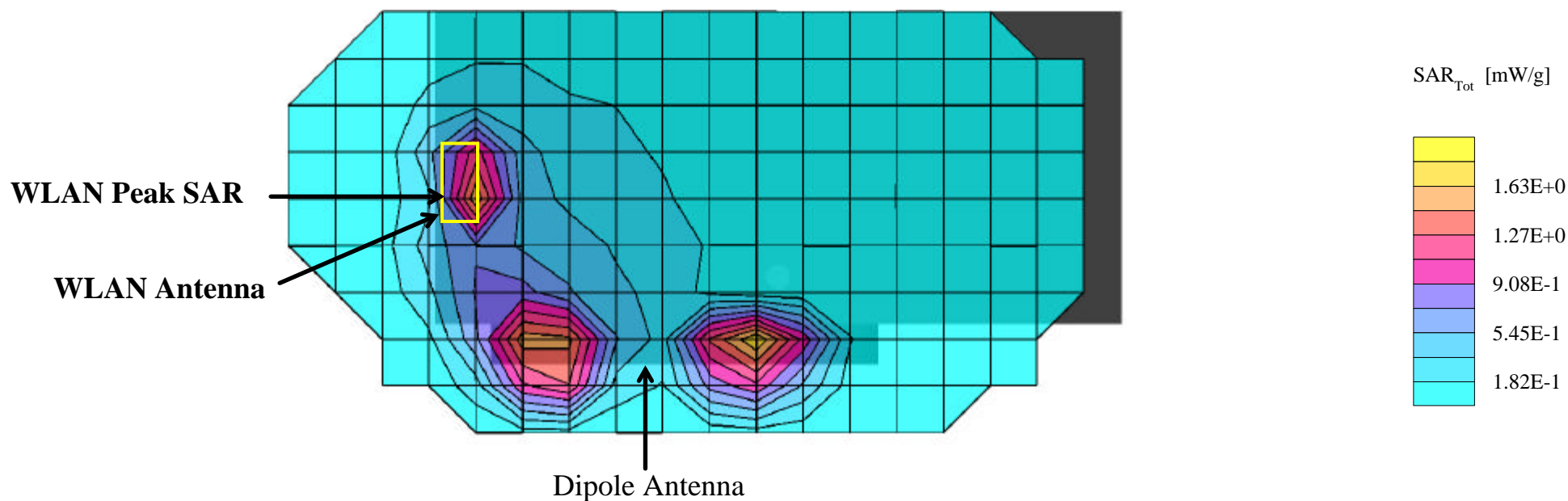
Channel 1 (2412 MHz)

Conducted Power: 21.2 dBm

Ambient Temp: 23.9°C; Fluid Temp: 23.9°C

Date Tested: August 29, 2003

WLAN Peak SAR Evaluation



Itronix Corporation FCC ID: KBCIX260MPIA555BT

SAM Phantom; Flat Section; Position: (90°,0°)

Probe: ET3DV6 - SN1387; ConvF(4.60,4.60,4.60); Crest factor: 1.0

Muscle 2450 MHz: $\sigma = 1.98$ mho/m $\epsilon_r = 50.3$ $\rho = 1.00$ g/cm³

Coarse: Dx = 15.0, Dy = 15.0, Dz = 10.0

Back of LCD - Display Closed (CDMA Dipole Antenna Parallel to Planar Phantom - Stowed Position)

0.0 cm Separation Distance from Back of LCD to Planar Phantom

IX260 Rugged Laptop PC

Cisco DSSS WLAN Card MPI-350 Mini-PCI with Internal Antenna

Co-located with Sierra Wireless AirCard 555 Dual Band CDMA Modem Card (PCS) with External Dipole Antenna

and Mitsumi WML-C11N Bluetooth Transmitter with Internal Antenna

Simultaneous Transmit with co-located WLAN, PCS CDMA, and Bluetooth Transmitters

CW Mode

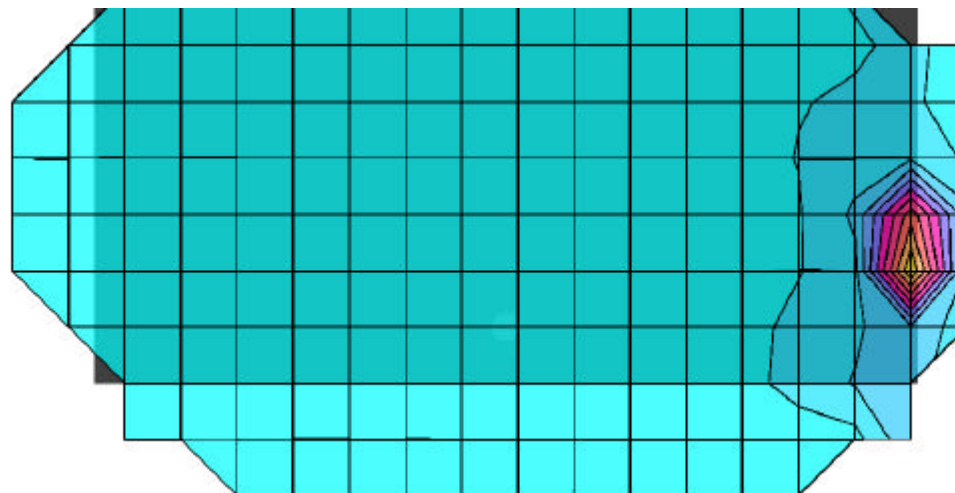
Channel 1 (2412 MHz)

Conducted Power: 21.2 dBm

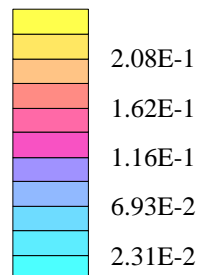
Ambient Temp: 23.9°C; Fluid Temp: 23.9°C

Date Tested: August 29, 2003

Coarse Scan to show 2nd Half of LCD Display Back



SAR_{Tot} [mW/g]



Itronix Corporation FCC ID: KBCIX260MPIA555BT

SAM Phantom

Probe: ET3DV6 - SN1387; ConvF(4.60,4.60,4.60); Crest factor: 1.0

Muscle 2450 MHz: $\sigma = 1.98$ mho/m $\epsilon_r = 50.3$ $\rho = 1.00$ g/cm³

Z-Axis Extrapolation at Peak SAR Location

Back of LCD - Display Closed (CDMA Dipole Antenna Parallel to Planar Phantom - Stowed Position)

0.0 cm Separation Distance from Back of LCD to Planar Phantom

IX260 Rugged Laptop PC

Cisco DSSS WLAN Card MPI-350 Mini-PCI with Internal Antenna

Co-located with Sierra Wireless AirCard 555 Dual Band CDMA Modem Card (PCS) with External Dipole Antenna

and Mitsumi WML-C11N Bluetooth Transmitter with Internal Antenna

Simultaneous Transmit with co-located WLAN, PCS CDMA, and Bluetooth Transmitters

CW Mode

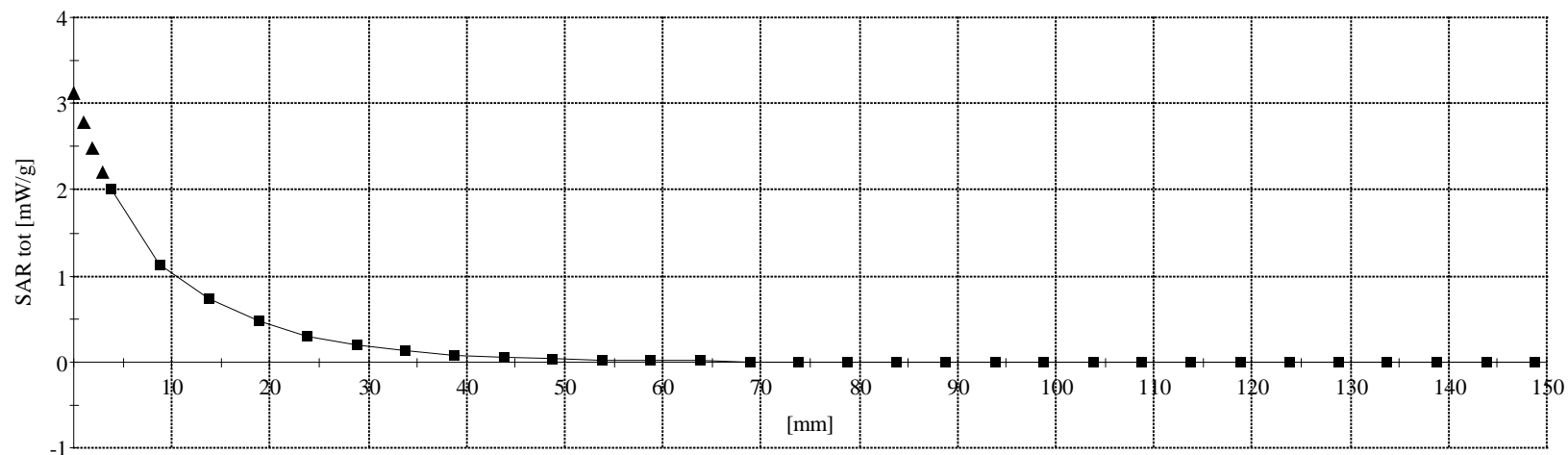
Channel 1 (2412 MHz)

Conducted Power: 21.2 dBm

Ambient Temp: 23.9°C; Fluid Temp: 23.9°C

Date Tested: August 29, 2003

WLAN Peak SAR Evaluation



Itronix Corporation FCC ID: KBCIX260MPIA555BT

SAM Phantom; Flat Section; Position: (90°,0°)

Probe: ET3DV6 - SN1387; ConvF(4.60,4.60,4.60); Crest factor: 1.0

Muscle 2450 MHz: $\sigma = 1.98$ mho/m $\epsilon_r = 50.3$ $\rho = 1.00$ g/cm³

Coarse: Dx = 15.0, Dy = 15.0, Dz = 10.0

Cube 5x5x7

SAR (1g): 1.11 mW/g, SAR (10g): 0.520 mW/g

Back of LCD - Display Closed (CDMA Dipole Antenna Parallel to Planar Phantom - Stowed Position)

0.0 cm Separation Distance from Back of LCD to Planar Phantom

IX260 Rugged Laptop PC

Cisco DSSS WLAN Card MPI-350 Mini-PCI with Internal Antenna

Co-located with Sierra Wireless AirCard 555 Dual Band CDMA Modem Card (PCS) with External Dipole Antenna

and Mitsumi WML-C11N Bluetooth Transmitter with Internal Antenna

Simultaneous Transmit with co-located WLAN, PCS CDMA, and Bluetooth Transmitters

CW Mode

Channel 11 (2462 MHz)

Conducted Power: 21.1 dBm

Ambient Temp: 23.9°C; Fluid Temp: 23.9°C

Date Tested: August 29, 2003

WLAN Peak SAR Evaluation

