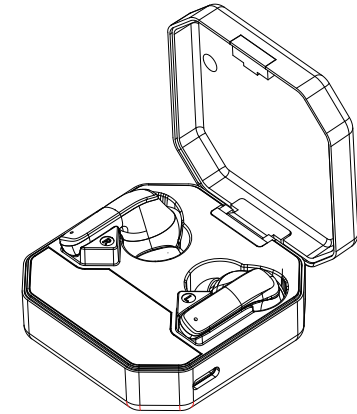


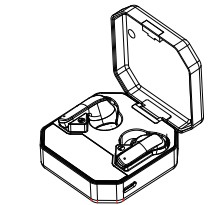
# Ghostbuds

## Transparent Tru Wireless earbuds

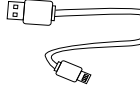


## User Manual

### What's in the box



earbuds(2) and charging case

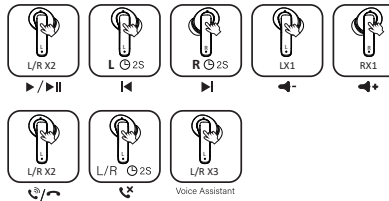


USB cable 1pc



User manual 1pc

### Key functions-earbuds

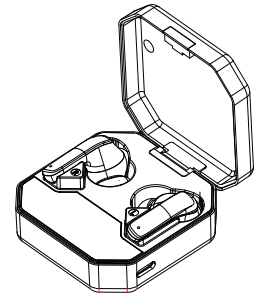


- Play/pause: Double-tap the MFB on L/R.
- Previous track: Press and hold the MFB on L for 2 seconds.
- Note: In mono mode, Double-tap on the MFB on L will trigger next song function.
- Next song: Press and hold the MFB on R for 2 seconds.
- Volume down: Single-tap the MFB on L.
- Note: In mono mode, volume adjustment is unavailable.
- Volume up: Single-tap the MFB on R.
- Note: In mono mode, volume adjustment is unavailable.
- Answer/hang up a call: Double-tap the MFB on L/R.
- Reject a call: Press and hold the MFB on L/R for 2 seconds when calling.
- Activate voice assistant: Triple L/R while connect with devices.

### LED display-Buds

- Pairing: blue and white light flash alternately
- Paired: light off
- Charging: red light on
- Fully charged: Red light off

### Key functions-Case



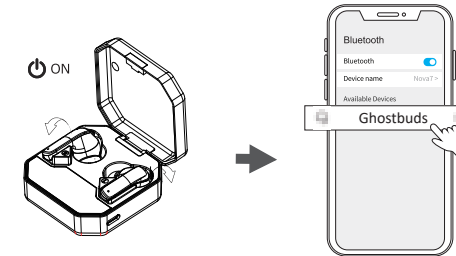
### LED display-Case

- 1. Case charging: Red light shine
- 2. Case fully charged: Red light on
- 3. When earbuds charging: Green light on
- 4. When earbuds fully charged: Green light off
- 5. Case battery low: Green light shine

### Notes:

- 1. Charging with DC5V/1A adaptor or USB Cable
- 2. While max/minium volume, you can hear a prompt tone

### Bluetooth Connection



1. Earbuds will power on when take them out from the case.
2. After open the phone Bluetooth, Click the "Ghostbuds" to pairing the buds.

### Notes:

1. If it is not paired for 15 minutes after booting, it will shut down. When low battery, you can hear the prompt tone then the speaker will power off automatically
2. If Apple users feel that the volume is low, you can turn off this setting on the phone (Settings-Sounds & Haptics-Headphone Safety-Reduce Loud Sounds)

### Specifications

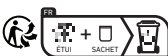
|                            |   |
|----------------------------|---|
| Product Type               | Transparent true wireless earbuds                               |
| Speaker system             | Stereo  |
| Dimensions                 | 61*61*25mm  |
| Weight                     | 60g (earbuds: 8g)   |
| Driver                     | Φ13mm 32Ω   |
| Audio Playtime             | Approx 6 hours(@50-60% Volume) total:18 hours                   |
| BT version                 | V5.3  |
| Rate power                 | 3mW   |
| Battery Capacity:          | 3.7V 400mAh (case) 3.7V 30mAh (earbuds)                         |
| Charging Time:             | Charging case: Approx 2 hours(USB C)<br>Earbuds: approx 1 hours |
| Frequency Reponse:         | 100-20KHZ   |
| Range                      | Up to 10m   |
| Input power                | 5V/1A   |
| Built-in stereo Microphone |   |

### Safety Instructions

1. Keep the product away from extremely hot and cold environments, it will damage the battery and circuit.
2. Avoid liquid immersion into the product.
3. Do not disassemble the product.
4. Do not use concentrated chemical products or detergents to clean the product.
5. Use only 5V/1A power supply. Connecting the power supply voltage too high may cause serious damage.
6. Do not randomly discard or place the product near fire or high temperature to avoid the danger of explosion.



Made in China



### FCC statement

This device complies with part 15 of the FCC Rules. Operation is subject to the following two conditions: (1) this device may not cause harmful interference, and (2) this device must accept any interference received, including interference that may cause undesired operation.

Any changes or modifications not expressly approved by the party responsible for compliance could void the user's authority to operate the equipment.

NOTE: This equipment has been tested and found to comply with the limits for a Class B digital device, pursuant to Part 15 of the FCC Rules. These limits are designed to provide reasonable protection against harmful interference in a residential installation. This equipment generates, uses and can radiate radio frequency energy and, if not installed and used in accordance with the instructions, may cause harmful interference to radio communications. However, there is no guarantee that interference will not occur in a particular installation. If this equipment does cause harmful interference to radio or television reception, which can be determined by turning the equipment off and on, the user is encouraged to try to correct the interference by one or more of the following measures:

- Reorient or relocate the receiving antenna.
- Increase the separation between the equipment and receiver.
- Connect the equipment into an outlet on a circuit different from that to which the receiver is connected.
- Consult the dealer or an experienced radio/TV technician for help.

The device has been evaluated to meet general RF exposure requirement. The device can be used in portable exposure condition without restriction