



**SMART
PEPPER SPRAY
User Manual**

SPS-14-BK



**Security Equipment
Corporation**

747 Sun Park Drive
Fenton Missouri 63026 USA
Phone: 636-343-0200
Toll Free: 800-325-9568

www.sabrered.com

Product Specifications

- Formula: SABRE Red Smart Pepper Spray
- Spray Pattern: Powerful Stream
- Bursts: 25 (Up to 5x the amount of other brands)
- Spray Distance: 10 Feet
- Bluetooth Range: 30 Feet

Included Accessories

- SABRE Red Pepper Spray Canister
- Inert Practice Canister
- Free SABRE Personal Safety app

What does SABRE® Pepper Spray do?

- Involuntary eye closure
- Difficulty breathing
- Facial burning
- More at sabrered.com/effects

When should I use my SABRE® Pepper Spray?

- Carry it with you at all times!
- Deploy when you feel your safety is in jeopardy or you are attacked, then run and alert the police immediately — do not try to capture your attacker.
- Product is designed to be used in the upright position only.
- We recommend replacing the Pepper Spray canister after deployment, to make sure you're always fully protected.
- Be sure to always inspect the expiration date found on the canister, never use if expired.

Active Ingredients

- Oleoresin Capsicum (Red Pepper). AVOID CONTACT WITH YOUR SKIN AND EYES

In case of skin contact...

- Remove contaminated clothing immediately
- Flush skin 15-20 minutes with soap and cold water, repeat as necessary
- Do not rub, or use creams, salves or oils
- Consult a physician if irritation persists

In case of eye contact...

- Carefully remove & discard contact lenses
- Flush eyes with cold water for 15 minutes
- Get prompt medical attention



WARNING

Severe Eye, Skin and Respiratory Irritant.

FOR SELF-DEFENSE ONLY. The use of this substance or device for any purpose other than self-defense is a crime under the law. Illegal use of this unit is punishable by imprisonment, fines or both. Not to be purchased or possessed by minors, felons, anyone addicted to narcotics or where prohibited by law. N.Y. — This device shall not be sold by anyone other than a licensed or authorized dealer. Violators may be prosecuted under the law. FAA regulates carrying self-defense pepper sprays on airplanes. Visit www.tsa.gov for more information. Contents are dangerous - use with care.

CAUTION: CONTENTS UNDER PRESSURE.

Do not puncture or incinerate can. Do not expose to heat or store above 120°F (50°C). Each canister states expiration date. KEEP OUT OF THE REACH OF CHILDREN. Read and follow enclosed instructions before using.

SABRE Smart Pepper Spray Instructions



Canisters

Do not drop or submerge your Smart Pepper Spray in water. If using in wet conditions, keep in a dry place until needed.

The SABRE Smart Pepper Spray is packaged empty. Before loading the Pepper Spray canister its recommended that you first use the supplied Practice canister to familiarize yourself with the product.

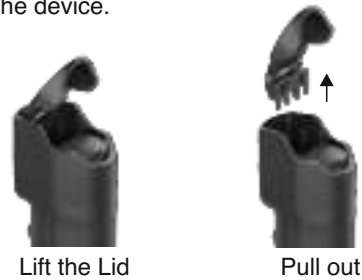
WARNING

Loading and Unloading should be done outside away from people and animals. Always point the nozzle away from you when loading and unloading. Do not press the actuator when loading and unloading. To prevent misfiring always make sure the red Spacer is properly installed before loading/unloading.

Canister Replacement

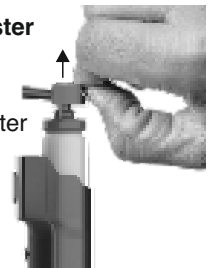
Step 1: Accessing the Canister

- Lift the top lid and gently pull it out from the device.



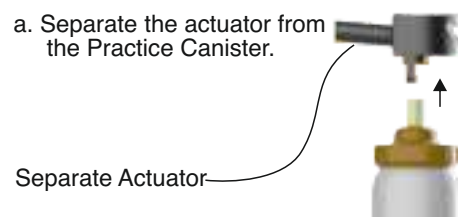
Step 2: Removing the Canister

- Hold the actuator firmly.
- Carefully pull out the Canister from the device.



Step 3: Separating the Actuator

- Separate the actuator from the Practice Canister.



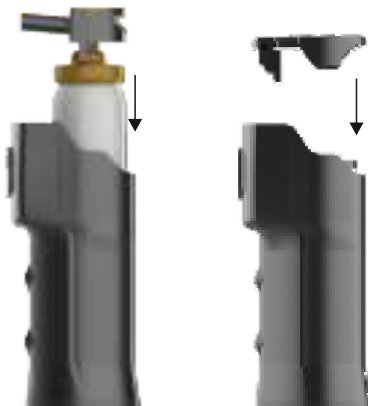
Step 4: Reinstalling the Canister

- Insert a new Canister.
- Align the actuator with the new Canister.
- Secure the actuator to the Canister.



Step 5: Reassembling the Device

- Insert the Canister and actuator assembly back into the device.
- Replace the top lid, ensuring it fits securely into place.



Caution: Handle the Canister and actuator with care to avoid damage or accidental discharge.

- The Canister should now be loaded inside and is ready for use
- Its recommended to test fire the product outside in a well-ventilated area with the spray pointing away from you to ensure the canister was loaded properly. We recommend not pairing your pepper spray to the SABRE Personal Safety app until after test-fire to avoid sending a false alert.
- Watch training video at <https://www.sabrered.com/sabre-app-videos>
- Pair SABRE Smart Pepper Spray with the SABRE Personal Safety app. The SABRE Smart Pepper Spray is now ready to use

EMERGENCY FEATURES

Separation and Standalone Use

In emergency situations, the device's bottom portion can be detached and utilized independently of the pepper spray.



Emergency Alert

To alert your designated emergency contact:

1. Toggle the switch once.

Emergency Button



Important Requirements for Emergency Alert Functionality

To ensure seamless functionality:-

1. Ensure your mobile device is within a 3-meter range.
2. Verify the Sabre Application is running in the background.
3. Grant all required permissions to the Sabre Application.

To spray your SABRE Smart Pepper Spray

- Slide thumb under flip top protective cover onto actuator button
- Aim at your target
- Press down to deploy SABRE Red Smart Pepper Spray
- Fire ear to ear across the eyes. Once eyes are affected, aim for nose and mouth
- A stream will reach up to 10' (3 m) in front of you

- Shield face when firing into the wind
- Release pressure to stop firing
- Sidestep and escape to safety

When you sense that you are in a potentially dangerous situation, have your Pepper Spray in hand and ready to use. It's best to always have your pepper spray accessible!

To Replace the Pepper Spray Canister

- It's best to unpair the Pepper Spray from the app before replacing the canister to avoid accidentally alerting the alarm in the app.



Unpair Device

- Canister should only be replaced outside in a well-ventilated area with the spray pointing away from you
- To replace the canister first pull out the base of the Smart Pepper Spray by twisting the bottom
- Remove the used canister by grasping the bottom of the canister with your fingers and pulling straight out
- Once the used canister is removed, set aside and pick up replacement canister
- Insert the new canister in SABRE Smart Pepper Spray case with the plastic valve tip at the top

- Once canister is inside, re-attach the base of the housing until tight, canister will automatically connect to actuator
- Test fire the product outside in a well-ventilated area with the spray pointing away from you. We recommend not pairing the Smart Pepper Spray to the SABRE Personal Safety app until after test-fire, to avoid sending a false alert.
- Pair SABRE Smart Pepper Spray with the app. The SABRE Smart Pepper Spray is now ready to use
- Additional replacement canisters can be purchased at SabreRed.com

Now that you are familiar with how to use the SABRE Smart Pepper Spray download the SABRE Personal Safety app and create an account to link with the device!

- Download the SABRE Personal Safety app from the App Store (iOS), Android or Google Play
- Follow user prompts by accepting Terms and Conditions
- Standard text and data rates apply for these services.
- Create account – Create your user profile and enter information that can be used to identify you in case of emergency
- OTP Verification – To complete account set up, SMS OTP Verification must be completed by entering the one-time password verification code that will be sent to the app user's phone number. Code will be sent by SMS text and will need to be entered into the app for verification.
- If you prefer to receive OTP Verification via a phone call, select this option when prompted.

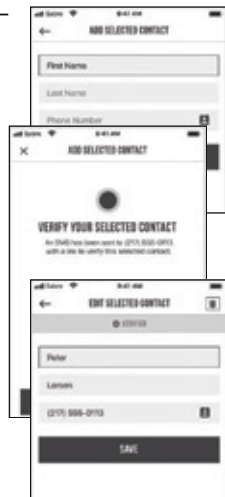
NOTE: If you do not receive OTP Verification text, select the phone call option or contact your cellular carrier to ensure they are not restricting SMS OTP texts.

- Create Pin Code – Create a 4-digit code that is your security password when using the app for quick authorization
- Create Your Profile – First create a profile picture either by taking a photo or choosing from your photo library. Once completed you will be prompted to the next screen for Gender, Hair Color, Eye Color, Height, Weight, Skin Color, and Medical Issues for Immediate Attention. This information will be important for emergency responders and only used for this purpose.



You are now in the home map screen. To get the most out of your product you will need to enter information for your selected contacts, the individuals you identify to send alerts to in the event of an emergency.

- Enter Selected Contacts – From the map screen click the User Profile icon on the bottom right corner of screen to access your profile. On the SELECTED CONTACTS tab, click ADD NEW CONTACT and enter their information (You may also choose from your Contact List by clicking the contact icon in phone number box). Once entered, a SMS text will be sent to verify your selected contact.
- Verify Selected Contact – As an extra safety precaution, the added contact must verify to be alerted by simply clicking the link in the SMS text they receive. Prior to adding a selected contact, it's best to notify each person that they will be receiving a text message with a link. They will need to click on the link to verify they accept to receive notifications from the SABRE Personal Safety app. Once verified, when you pull down the Selected Contact screen to refresh a green checkmark will appear next to the selected contact name. It will appear as "unverified" until the Trusted contact clicks the SMS link that was sent to them.
- You can add up to 5 contacts to your selected contact list. Once verified, all contacts you have added in your selected contacts are notified with every alert.

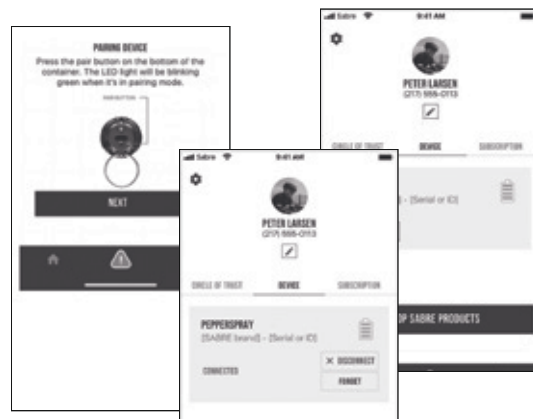


Pairing SABRE Smart Pepper Spray with the SABRE Personal Safety App

Within the app from the home map screen, click the User Profile icon on the bottom right corner.

- Click on the DEVICE tab, Choose Pair Device
- Keep your SABRE Smart Pepper Spray within 3 feet (1 meter) when Bluetooth pairing
- Press the pair button on the bottom of the Smart Pepper Spray as seen in below image
- The LED light on the device will flash green when it's in pairing mode
- Select "CONNECT" on the Device screen while green light is flashing to pair. Connected will be displayed on the App screen.

If your Smart Pepper Spray becomes disconnected (unpaired) for any reason you will receive a pop-up notification from the app and it will attempt to automatically reconnect for next 2 minutes. You'll receive a new pop-up notification when it reconnects.

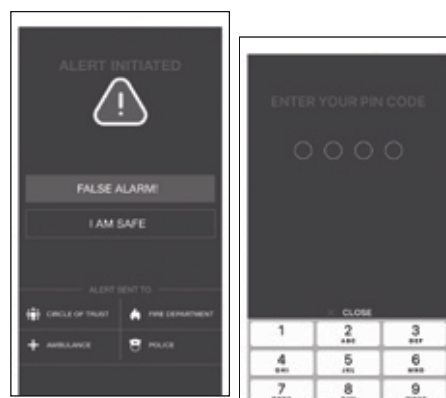


The app can also be used if the Smart Pepper Spray is not connected to it, by opening the alert screen and tapping the Alert button. This was designed in case you are in a situation without your Smart Pepper Spray and do not feel safe. You can always be prepared.

Alert Initiated

- When the SABRE Smart Pepper Spray is deployed an alert is triggered through Bluetooth transmission to your app.
- Verified Selected Contacts will receive SMS emergency alert text with a link showing the location where the device was deployed. It will continue to share the user's geo-location* with the selected contacts until the user opens the app and either chooses "False Alarm" or "I Am Safe".
- The Security PIN must be correctly entered to cancel the alert. This is for your protection to verify your identity, in case your phone was stolen by the attacker.
 - False Alarm – should be used if the product was accidentally used and there is no immediate danger.
 - I Am Safe – should be used when the user is no longer in a dangerous situation and does not require help.
- Once PIN is entered the selected contacts will receive a notification that you are no longer in danger and location will no longer be shared.

*Geo-location is the identification or estimation of the real world geographic location of your mobile phone.



911 Alert Integration - Premium Option

SABRE has teamed up with Noonlight to offer upgraded protection.

- The SABRE Personal Safety app was built with an extra layer of protection that alerts local police, ambulance and fire department in addition to your selected contacts. When an alert is initiated, Noonlight dispatchers receive the alert and will contact the user via text to provide emergency assistance.
- Noonlight alerts local authorities when your SABRE Smart Pepper Spray is deployed. Authorities are able to track your location as well as see where your device was deployed
- For a small monthly fee you can subscribe to SABRE Premium for this additional protection service from the user screen.
 - Click Subscription in the middle of user screen and upgrade now. You will automatically be directed to the App store / Google Play to process payment for the subscription. You will be directed back to the app once completed.
- With this option activated you can now alert your selected contacts as well as local authorities.