

503011284-A318-蓝牙+按键-英文说明书-B1.0

展开尺寸:230\*400mm, 折叠尺寸:115\*80mm

工艺:128g铜版纸

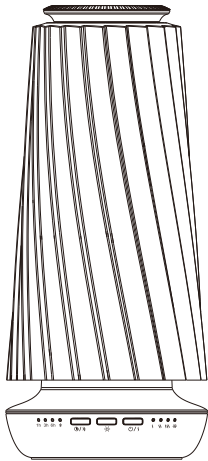
蓝色边框为折叠线, 不做印刷

PRODUCT MANUAL

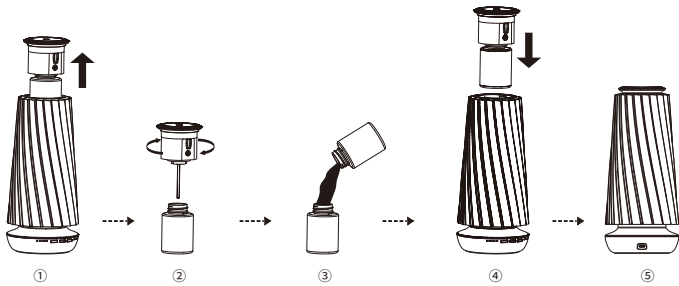
Aroma diffuser



If the QR code cannot be scanned, please search for "Scent Marketing" in Google play or APP store.



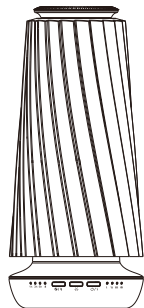
Installation Step



1. Lift the diffuser head upwards.
2. Twist off the bottle to separate it from the diffuser head.
3. Add fragrance into the bottle.
4. Tighty screw the bottle filled with fragrance onto the diffuser head, then align and place it back into the device.
5. Plug in the power charger to start operation.

Specification

|              |                       |
|--------------|-----------------------|
| 【 Model 】    | A318                  |
| 【 Size 】     | φ115*258mm            |
| 【 Bottle 】   | 100ml                 |
| 【 Input 】    | DC5V==2A              |
| 【 Power 】    | 7W                    |
| 【 Coverage 】 | 75m³/225m³/7945.65ft³ |
| 【 N.W. 】     | 652g                  |
| 【 Material 】 | Plastic               |
| 【 DID/QDID 】 | D067136/166078        |



Power adapter



Type-C cable



Oil bottle



Bottle cap



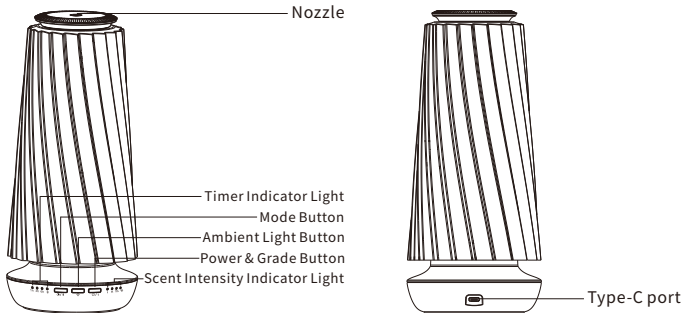
Manual

Concentration and consumption

| Grade      | Work time(s) | Stop time(s) | Consumption(g/h) |
|------------|--------------|--------------|------------------|
| G1         | 5            | 240          | 0.05             |
| G2         | 10           | 220          | 0.11             |
| G3         | 15           | 200          | 0.18             |
| G4         | 15           | 180          | 0.20             |
| G5         | 20           | 160          | 0.28             |
| G6         | 20           | 120          | 0.36             |
| G7         | 25           | 100          | 0.51             |
| G8         | 25           | 80           | 0.61             |
| G9         | 25           | 60           | 0.72             |
| Customized | 5-25s        | 60-600s      | -                |

- Note:**
- 1.The intensity grade button is only effective for G1, G4, and G7.
- 2.The Smart APP can control all grades.
- 3.At a temperature of 25°C, and when operating for 8 hours daily on G4, a 100ml bottle of fragrance can last up to 50 days.
- 4.Abova data is for reference only. If customers use essential oils with different viscosities, the oil consumption will vary;
- 5.For the best diffusion effect, it's recommended to use essential oils with a viscosity below 30mPa.s. And the optimal working temperature is 25°C.

Functional analysis



- Power & Grade Button**
- Short Press: Change between grade settings, default sequence:"Grade 1 (Low),Grade 4(Medium), Grade 7 (High), Instant Aroma Burst", each grade corresponds to an indicator light.
- Long press for 1 second: Turns the device on/off (automatically disconnects Bluetooth).
- Long press for 5 seconds: Resets the device to factory settings.

- Ambient Light Button**
- Short press: Cycles through the ambient light mode in the following sequence:On,Breathing, Off.

- Mode Button**
- Short press: Cycles through the timer settings in the following sequence: "1H, 3H, 6H, Smart Mode, 24H Mode".
- When 1H, 3H, 6H, or Smart Mode is selected, the corresponding timer light will stay on.
- When 24H Mode is selected, all timer lights will turn off.

- Timer Indicator Lights**
- There are 3 timer settings available: 1H, 3H, and 6H.
- When timer mode is selected, the timer light will turn off.

- Scent Intensity Indicator Light**
- Short press the""/"button to select and switch between 4 different scent intensity levels.

- Sound**
- Short press: One beep.
- Long press: Continuous beep.
- Bluetooth data received: One beep.
- Timer ends and power off: One beep.

- Ambient Light**
- Constant Light:Short press to gradually increase the ambient light from dim to bright until it reaches the maximum brightness, then stays on.
- Breathing Light:Short press to switch from constant light mode to the breathing effect. The ambient light will gradually dim to the lowest brightness,,then gradually brightento the highest brightness, creating a breathing effect thatrepeats in a cycle of about 8 seconds.
- Off:Short press to gradually turn off the ambient light.
- The ambient light is on when powered on.

- Instant Aroma Burst**
- Turn On**
- When the Instant Aroma Burst mode is activated, the device will "work for 55 seconds, stop for 5 seconds," continuing for 5 minutes. All three scent intensity lights will turn off.
- If the ambient light is on before activating Instant Aroma Burst mode, it will automatically switch to the breathing effect once the mode is activated, with the breathing cycle speeding up to approximately 4 seconds.
- If the ambient light is off before activated Instant Aroma Burst mode, it will still remain off and not illuminate.

- Turn Off**
- When Instant Aroma Burst mode is turned off, diffusion will automatically stop after 5 minutes, and the device will restore to Grade 1 with default light.

- Note: 1. The Instant Aroma Burst mode has a higher priority than the power button. Even if the device is not working during the current working period, it will still working as long as Instant Aroma Burst mode is activated. Once this mode ends, the device will resume operation based on the current working period settings.**
- 2. Adjusting the working periods via smart APP will not affect the Instant Aroma Burst mode.**

- Mode Description**
- 24H Mode:The device operates continuously for 24 hours according to the selected scent intensity grade.
- Timer Mode:The device operates based on the selected working period. Once the set time is reached, the device will automatically shut down.
- Smart Mode:The device operates based on the time and intensity grade set in the app.
- By default, the device works in 24H mode when powered on. You can manually switch modes using the buttons.

- Timer Description**
- When the timer is enabled, the device will automatically shut down once the set time is reached.
- If the device is already in a timed mode and you activate the Instant Aroma Burst mode, the timer will be temporarily interrupted.
- If the device will wait until the Instant Aroma Burst mode ends or is manually canceled, then the remaining time on the timer will automatically resume.

Bluetooth instruction

- Where to get the app:**
- Please search for “Scent Marketing” in Google play or APP store.

- Note:**
- Make sure that the location function of Bluetooth and mobile phone is enabled.

1. Open the scent marketing app and select Bluetooth.
2. Select your device.
3. Enter the default password 8888 and press Login.

- 4.Different schedules by pressing the" + " button. To delete a schedule, swipe left.
- 5.Press the toggle buttonto turn on/off any schedule.
- 6.On the"Working period setting" page, Set the hours of the day you want your diffuser to run by scrolling the"Start working time" and" Stop working time".
- 7.Select the days of the week you want your diffuser to run (all days are pre-selected).
- 8.Press"+"or "-"to increase or decrease the preset intensity grades (1-20. See chartfor details.
- 9.Check ( )the Custom Stall to create a custom intensity and scroll the"Spray Time" and "Pause Time"
- 10.Press the "Save" button to update the Settings.
- 11.Change the default password by pressing on the"About"tab, in the'Device control"

- 12.Press the "Password Change" to access the password change page.



13. Enter a new four-digit password, then click"Confirm".

- Note:** If you forget the password, please press the reset button to restore the factory setting. The factory settings password is 8888.

⚠ **Warning**






1. Use the Product in the environment with the temperature Between -10°C and 50°C; Otherwise, it may damage your product. Products can only be used below 2000m altitude;
2. This product is intended for sale and application in a business environment.  
RED Article 10 2  
-This product can be used across EU member states  
RED Article 10 10  
-The product is class 1 product, No restrictions  
The RF distance between body and product is 20cm  
Frequency Range:  
2402-2480MHz  
Max.RF Output Power: -1.67 dBm (EIRP) @2Mbps
3. Mount this product more than 850 mm from the floor.
4. The appliance is only to be used with the recommended vaporizing medium. The use of other substances may give rise to a toxic or fire risk.

5. This appliance is not intended for use by persons (including children) with reduced physical, sensory or mental capabilities, or lack of experience and knowledge, unless they have been given supervision or instruction concerning use of the appliance by a person responsible for their safety.
6. Children should be supervised to ensure that they do not play with the appliance.
7. The appliance can only be used in conjunction with the power supply device with which the appliance is equipped.
8. The appliance should only use the safe ultra-low voltage power supply specified by the appliance to prevent failure.
9. If the supply cord is damaged, it must be replaced by a special cord or assembly available from the manufacturer or its service agent.
10. Battery type reference; battery orientation with respect to polarity; method for battery replacement; details on safe disposal of worn batteries; warning against battery use; how to react when a leaking battery occurs.

11. This device contains batteries that can only be replaced by qualified persons.
12. Do not tamper with the original operating device and function of the appliance.
13. Instructions for user maintenance shall include explicit instructions for all cleaning and servicing (that is, lubrication, adjustments and similar operations) that are intended to be performed by the user, and shall be preceded by the heading "USER-MAINTENANCE INSTRUCTIONS," or the equivalent.



⚠ **Caution**

-  Shall not modify, disassemble or repair the machine arbitrarily. Any failure happens, please contact technician in time.
-  Shall not damage the power cord, force to bend, yank, heavy load, clip or reprocess.
-  Shall not use damaged plug or unmatched with the socket;  
Shall not wet the machine or the plug;  
Shall not use overloaded power socket, wire or broken plug
-  Shall not touch the wire or product shell when thundering or/and lightning.
-  Shall not disassemble the machine when it is under operating

**Equipment cleaning**

**The machine needs to be cleaned when these conditions exist:**

1. You're changing to another kind of essential oil;
2. The atomization volume becomes weak .

**Cleaning steps:**

1. Pull out the atomized head.
2. Find a larger container and fill with industrial alcohol. Soak the atomized head and the bottle for 5-10mins.
3. Allow the atomizer head and the bottle to dry.

**Troubleshooting**

| Breakdown        | Solution   |
|------------------|--|
| Does not diffuse | -Check whether the mode you chose correct or not.<br>-Check if the machine is in a "Non-Working period" .<br>-Air pump may be damaged, replace with a new one.<br>-Check whether the tube is loose or not. |
| Low diffuse      | -The atomizing core is blocked, clean with alcohol or change to a new atomizer heads.<br>-Check whether the gasket is damaged/loose or missing.<br>-Check whether the tube is loose or not connected.      |
| Oil spill        | -Check whether the bottle is loose .<br>-Check if the gasket in the atomized head is damaged, loose or missing.  |
| Oil sprinkle     | -The atomized head is damaged: change to a new one.<br>-The machine is tilted or laying flat, keep the machine vertical.   |
| Abnormal noise   | -The air pump is loose, retighten the pump<br>-The air pump is damaged: replace.   |

**ISED Statement**

**English:**  
This device contains licence-exempt transmitter(s)/receiver (s) that comply with Innovation, Science and Economic Development Canada's licence-exempt RSS(s). Operation is subject to the following two conditions:  
(1) This device may not cause interference.  
(2) This device must accept any interference, including interference that may cause undesired operation of the device. The digital apparatus complies with Canadian CAN ICES-3(B)/NMB-3(B).

**French:**  
Cet appareil contient des émetteurs/récepteurs exempts de licence qui sont conformes aux RSS exemptés de licence d'Innovation, Sciences et Développement économique Canada.  
L'exploitation est soumise aux deux conditions suivantes :  
(1) Cet appareil ne doit pas provoquer d'interférences.  
(2) Cet appareil doit accepter toute interférence, y compris les interférences susceptibles de provoquer un fonctionnement indésirable de l'appareil.  
L'appareil numérique du ciem conforme canadien peut-3 (b)/ nmb-3 (b).

This device meets the exemption from the routine evaluation limits in section 2.5 of RSS 102 and compliance with RSS 102 RF exposure, users can obtain Canadian information on RF exposure and compliance. cet appareil est conforme à l'exemption des limites d'évaluation courante dans la section 2.5 du cnr - 102 et conformité avec rss 102 de l'exposition aux rf, les utilisateurs peuvent obtenir des données canadiennes sur l'exposition aux champs rf et la conformité.

This equipment complies with Canada radiation exposure limits set forth for an uncontrolled environment.

Cet équipement est conforme aux limites d'exposition aux rayonnements du Canada établies pour un environnement non contrôlé.

This equipment should be installed and operated with minimum distance 20cm between the radiator & your body.

Cet équipement doit être installé et utilisé à une distance minimale de 20 cm entre le radiateur et votre corps.

**FCC Statement**

This device complies with part 15 of the FCC Rules. Operation is subject to the following two conditions:

- (1) This device may not cause harmful interference, and
- (2) this device must accept any interference received, including interference that may cause undesired operation.

This equipment has been tested and found to comply with the limits for a Class B digital device, pursuant to part 15 of the FCC Rules. These limits are designed to provide reasonable protection against harmful interference in a residential installation. This equipment generates, uses and can radiate radio frequency energy and, if not installed and used in accordance with the instructions, may cause harmful interference to radio communications. However, there is no guarantee that interference will not occur in a particular installation. If this equipment does cause harmful interference to radio or television reception, which can be determined by turning the equipment off and on, the

user is encouraged to try to correct the interference by one or more of the following measures:  
- Reorient or relocate the receiving antenna.  
- Increase the separation between the equipment and receiver.  
- Connect the equipment into an outlet on a circuit different from that to which the receiver is connected.  
- Consult the dealer or an experienced radio/TV technician for help.

**FCC Caution:** Any changes or modifications not expressly approved by the party responsible for compliance could void the user's authority to operate the equipment. This transmitter must not be co-located or operating in conjunction with any other antenna or transmitter.  
Not applicable

**RF Exposure**  
This device complies with FCC radiation exposure limits set forth for an uncontrolled environment. This equipment should be installed and operated with minimum distance 20cm between the radiator & your body.