

**EXHIBIT 9**

**Internal Photographs**

(Pursuant to FCC Part 2.1033(b)(7), 2.1033(c)(12) and RSP 100 Annex C)

The following photographs are attached.

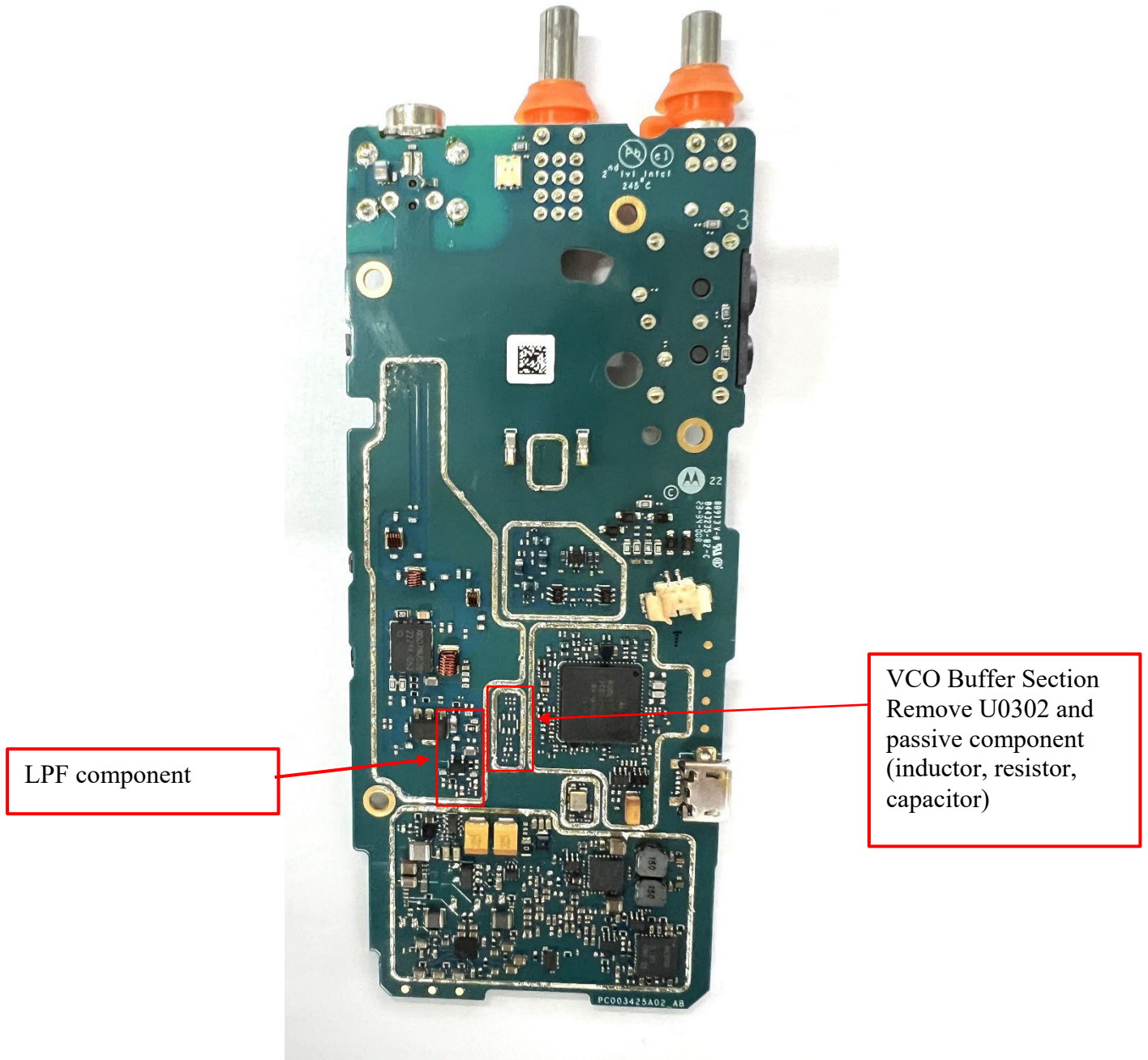
**Exhibit**

- |    |  |    |
|----|--|----|
| 1. | RF board <u>with</u> Shields (Top)                         | 9A |
| 2. | RF board <u>without</u> Shields (Top)                      | 9B |
| 3. | RF board <u>with</u> Shields (Bottom)                      | 9C |
| 4. | RF board <u>without</u> Shields (Bottom)                   | 9D |
| 5. | RF boards <u>with</u> chassis and housing for (Front Side) | 9E |
| 6. | Chassis and housing (Back Side)                            | 9F |

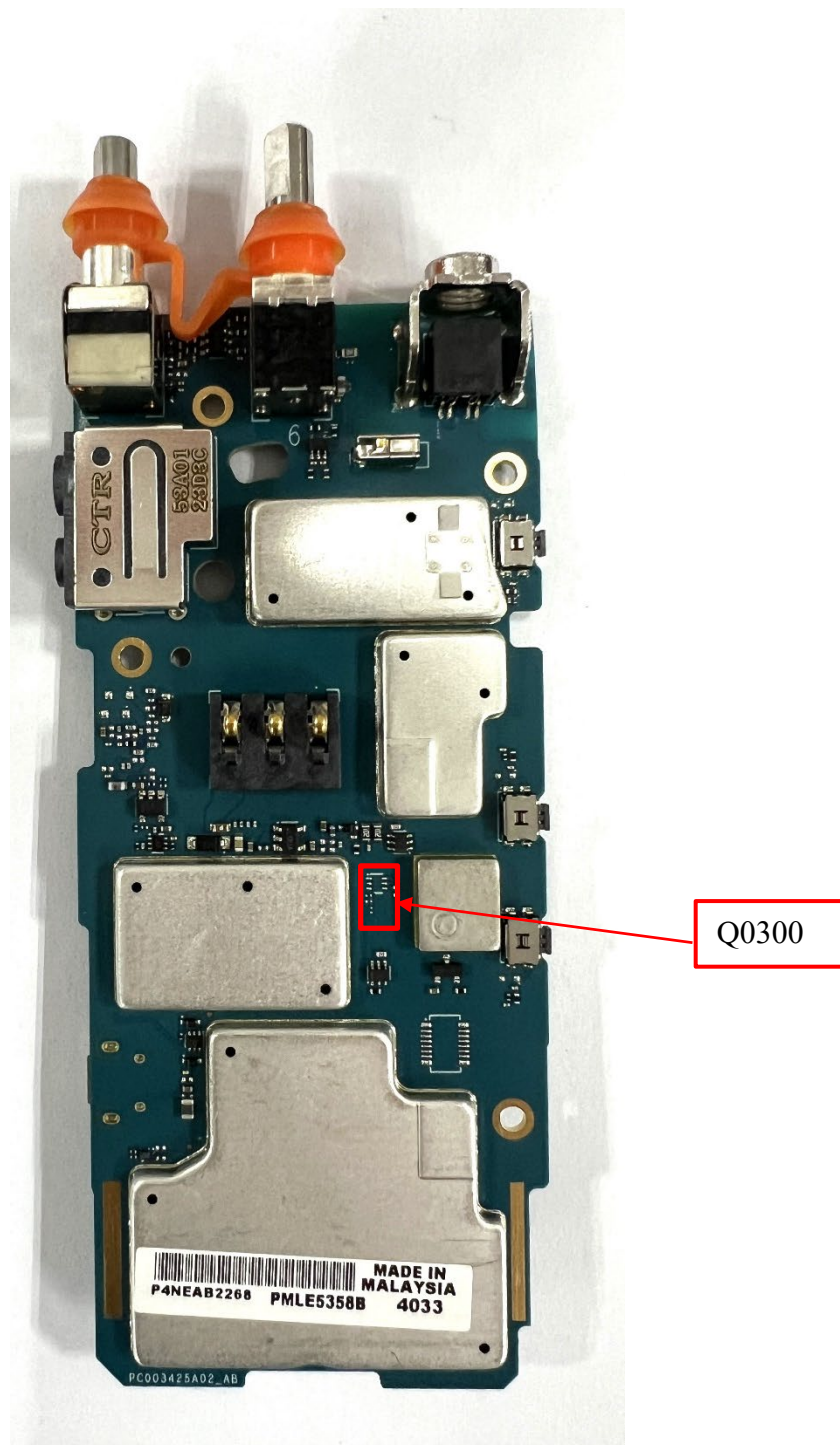
**Exhibit 9A - RF board with Shields (Top)**



**Exhibit 9B - RF board without Shields (Top)**

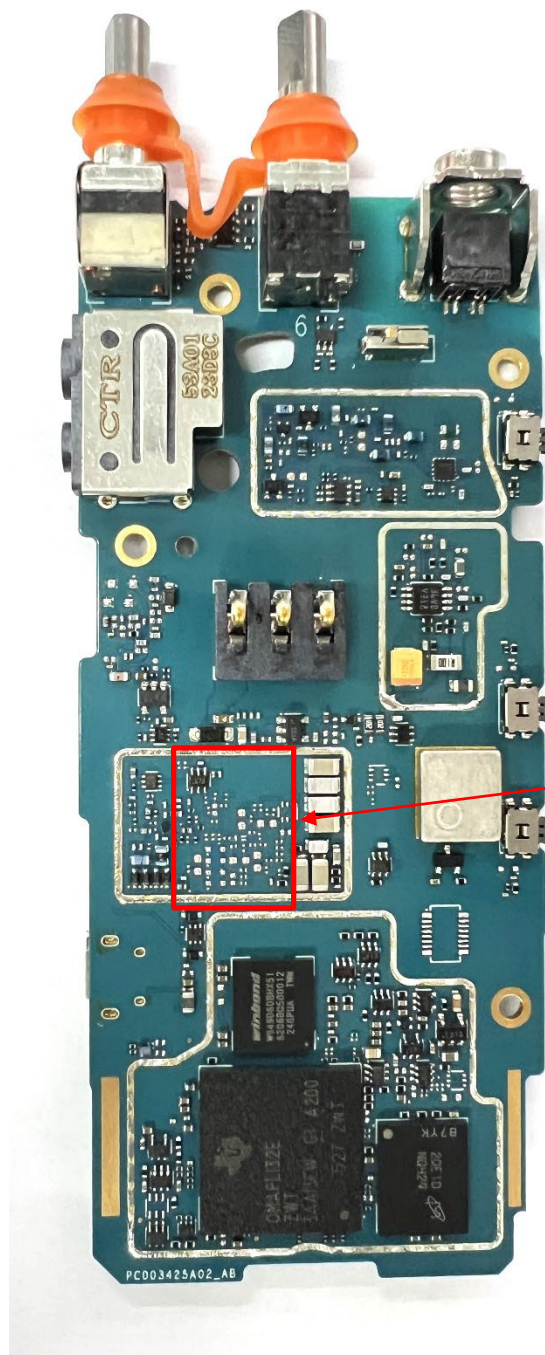


**Exhibit 9C - RF board with Shields (Bottom)**





**Exhibit 9D - RF board without Shields (Bottom)**



VCO 2 TX Section:  
Removed Q0251,  
VR0250, VR0251,  
VR0252, VR0253 and  
surrounding become  
DNP

**Exhibit 9E - RF board with chassis and housing (front side)**





**Exhibit 9F - Chassis and housing (back side)**



\*\*\* END \*\*\*