

EXHIBIT 3**EXTERNAL PHOTOGRAPHS**

(Pursuant to FCC Part 2.1033(b)(7) and 2.1033(c)(12) and RSP 100 Sec 8.3)

The following photographs are attached.

Exhibit

- | | | |
|----|---|----|
| 1. | Front View of Base Radio | 3A |
| 2. | Front View of Base Radio, Front Panel Removed | 3B |
| 3. | Back View of Base Radio (FCC/IC Label Location) | 3C |
| 4. | Side View of Base Radio (Right) | 3D |
| 5. | Side View of Base Radio (Left) | 3E |
| 6. | Top View of Base Radio | 3F |
| 7. | Top View of Base Radio, Top Panel Removed | 3G |
| 8. | Bottom View of Base Radio | 3H |
| 9. | Bottom View of Base Radio, Bottom Panel Removed | 3I |

Exhibit 3A – Front View of Base Radio



Exhibit 3B – Front View of Base Radio, Front Panel Removed



Exhibit 3C – Back View of Base Radio (FCC/IC Label Location)



Exhibit 3D – Side View of Base Radio (Right)



Exhibit 3E – Side View of Base Radio (Left)



Exhibit 3F –Top View of Base Radio



Exhibit 3G –Top View of Base Radio, Top Panel Removed

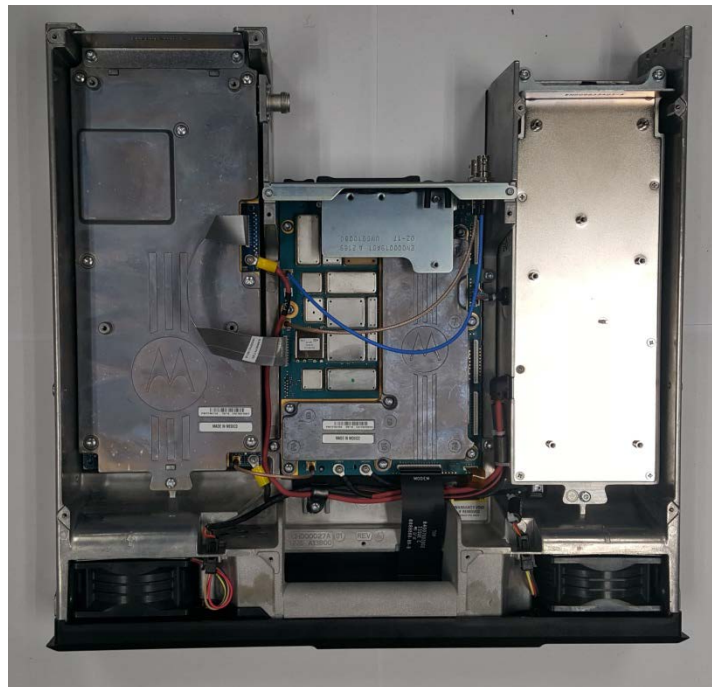


Exhibit 3H –Bottom View of Base Radio



Exhibit 3I – Bottom View of Base Radio, Bottom Panel Removed

