

MPE Report

Applicant : Fortinet, Inc.
Product Name : Network Security Gateway
Trade Name : FORTINET
Model Number : FG-1501G, FG-1500G, FG-1500G-DC, FG-1501G-DC, FG-801F, FG-800F, FG-800F-DC, FG-801F-DC
Marketing Name : FortiGate 800Fxxxxxxxx, FORTIGATE-800Fxxxxxxxx, FG-800Fxxxxxxxx, FortiGate 801Fxxxxxxxx, FORTIGATE-801Fxxxxxxxx, FG-801Fxxxxxxxx, FortiGate 800F-DCxxxxxxxx, FORTIGATE-800F-DCxxxxxxxx, FG-800F-DCxxxxxxxx, FortiGate 801F-DCxxxxxxxx, FORTIGATE-801F-DCxxxxxxxx, FG-801F-DCxxxxxxxx, FortiGate 1500Gxxxxxxxx, FORTIGATE-1500Gxxxxxxxx, FG-1500Gxxxxxxxx, FortiGate 1501Gxxxxxxxx, FORTIGATE-1501Gxxxxxxxx, FG-1501Gxxxxxxxx, FortiGate 1500G-DCxxxxxxxx, FORTIGATE-1500G-DCxxxxxxxx, FG-1500G-DCxxxxxxxx, FortiGate 1501G-DCxxxxxxxx, FORTIGATE-1501G-DCxxxxxxxx, FG-1501G-DCxxxxxxxx
(where "x" can be used as "A-Z", or "0-9", or "-", or blank for software changes or marketing purposes only)
Applicable Standard : 47 CFR § 2.1091
KDB 447498 D01
Received Date : Sep. 08, 2022
Issue Date : Dec. 30, 2022

Issued by

Approved By :

(Kris Pan)

Eurofins E&E Wireless Taiwan Co., Ltd.
No. 140-1, Changan Street, Bade District,
Taoyuan City 334025, Taiwan (R.O.C.)
Tel : +886-3-2710188 / Fax : +886-3-2710190



Taiwan Accreditation Foundation accreditation number: 1330
Test Firm MRA designation number: TW0010

Note:

1. The test results are valid only for samples provided by customers and under the test conditions described in this report.
2. This report shall not be reproduced except in full, without the written approval of Eurofins E&E Wireless Taiwan Co., Ltd.
3. The relevant information is provided by customers in this test report. According to the correctness, appropriateness or completeness of the information provided by the customer, if there is any doubt or error in the information which affects the validity of the test results, the laboratory does not take the responsibility.

Revision History

Version	Issued Date	Revisions	Revised By
00	Nov. 23, 2022	Initial Issue	Yiying Chiang
01	Dec. 30, 2022	Updata Basic Information(P.1) Updata Chapter 2(P.5) Updata External Photos Updata Internal Photos	Yiying Chiang

Contents

1.	General Information	4
2.	Description of Equipment under Test (EUT)	5
3.	RF Exposure Limit	6
4.	RF Exposure Assessment.....	7
5.	Maximum Tune-up Power.....	9
6.	Test Result	9
7.	Conclusion.....	9

1. General Information

1.1 Reference Applicable Standard

Standard	Description	Version
IEEE C95.1	American National Standard safety levels with respect to human exposure to radio frequency electromagnetic fields, 300 KHz to 100 GHz, New York.	1992
47 CFR § 2.1091	Radiofrequency radiation exposure evaluation: mobile devices.	-
47 CFR § 1.1310	Radiofrequency radiation exposure limits.	-
KDB 447498 D01	RF exposure procedures and equipment authorization policies for mobile and portable devices	v06

2. Description of Equipment under Test (EUT)

Applicant	Fortinet, Inc. 899 Kifer Road, Sunnyvale, CA 94086, USA																																						
Product Name	Network Security Gateway																																						
Trade Name	FORTINET																																						
Model Number	FG-1501G, FG-1500G, FG-1500G-DC, FG-1501G-DC, FG-801F, FG-800F, FG-800F-DC, FG-801F-DC																																						
Marketing Name	FortiGate 800Fxxxxxxxxx, FORTIGATE-800Fxxxxxxxxx, FG-800Fxxxxxxxxx, FortiGate 801Fxxxxxxxxx, FORTIGATE-801Fxxxxxxxxx, FG-801Fxxxxxxxxx, FortiGate 800F-DCxxxxxxxxx, FORTIGATE-800F-DCxxxxxxxxx, FG-800F-DCxxxxxxxxx, FortiGate 801F-DCxxxxxxxxx, FORTIGATE-801F-DCxxxxxxxxx, FG-801F-DCxxxxxxxxx FortiGate 1500Gxxxxxxxxx, FORTIGATE-1500Gxxxxxxxxx, FG-1500Gxxxxxxxxx, FortiGate 1501Gxxxxxxxxx, FORTIGATE-1501Gxxxxxxxxx, FG-1501Gxxxxxxxxx, FortiGate 1500G-DCxxxxxxxxx, FORTIGATE-1500G-DCxxxxxxxxx, FG-1500G-DCxxxxxxxxx, FortiGate 1501G-DCxxxxxxxxx, FORTIGATE-1501G-DCxxxxxxxxx, FG-1501G-DCxxxxxxxxx (where "x" can be used as "A-Z", or "0-9", or "-", or blank for software changes or marketing purposes only)																																						
Models different description	Regarding the differences, please see the table below. <table border="1"> <thead> <tr> <th>Model</th><th>PSU</th><th>SSD</th><th>DDR</th></tr> </thead> <tbody> <tr> <td>FG-1501G</td><td>AC</td><td>V</td><td>16 GB</td></tr> <tr> <td>FG-801F</td><td>AC</td><td>V</td><td>8 GB</td></tr> <tr> <td>FG-1500G</td><td>AC</td><td></td><td>16 GB</td></tr> <tr> <td>FG-800F</td><td>AC</td><td></td><td>8 GB</td></tr> <tr> <td>FG-1500G-DC</td><td>DC</td><td></td><td>16 GB</td></tr> <tr> <td>FG-800F-DC</td><td>DC</td><td></td><td>8 GB</td></tr> <tr> <td>FG-1501G-DC</td><td>DC</td><td>V</td><td>16 GB</td></tr> <tr> <td>FG-801F-DC</td><td>DC</td><td>V</td><td>8 GB</td></tr> </tbody> </table>			Model	PSU	SSD	DDR	FG-1501G	AC	V	16 GB	FG-801F	AC	V	8 GB	FG-1500G	AC		16 GB	FG-800F	AC		8 GB	FG-1500G-DC	DC		16 GB	FG-800F-DC	DC		8 GB	FG-1501G-DC	DC	V	16 GB	FG-801F-DC	DC	V	8 GB
Model	PSU	SSD	DDR																																				
FG-1501G	AC	V	16 GB																																				
FG-801F	AC	V	8 GB																																				
FG-1500G	AC		16 GB																																				
FG-800F	AC		8 GB																																				
FG-1500G-DC	DC		16 GB																																				
FG-800F-DC	DC		8 GB																																				
FG-1501G-DC	DC	V	16 GB																																				
FG-801F-DC	DC	V	8 GB																																				
FCC ID	TVE-111T15D																																						
Frequency Range	Bluetooth : 2402 - 2480 MHz																																						
Supported Modulations	Bluetooth : LE																																						

Note:

The above information of DUT was declared by manufacturer. Please refer to the specifications or user's manual for more detailed description.

Antenna Information			
Frequency Range	Model Number	Type	Max. Gain (dBi)
2402 ~2480 MHz	ARY196-0346-005-00	PIFA type	1.82
2402 ~2480 MHz	WA-F-LA-02-114	PIFA type	0.73

3. RF Exposure Limit

For devices that operate at larger distances from persons, where there are minimal RF coupling interactions between a device and the user or nearby persons, RF exposure compliance using maximum permissible exposure (MPE) limits is applied. The limits for MPE is listed as below:

Limits for General Population / Uncontrolled Exposure				
Frequency Range (MHz)	Electric Field Strength (E) (V/m)	Magnetic Field Strength (H) (A/m)	Power Density (S) (mW/cm ²)	Averaging Time E ² , H ² or S (minutes)
0.3-1.34	614	1.63	(100)*	30
1.34-30	824 / f	2.19 / f	(180 / f ²)*	30
30-300	27.5	0.073	0.2	30
300-1500	-	-	F / 1,500	30
1,500-100,000	-	-	1.0	30
Limits for Occupational / Controlled Exposure				
Frequency Range (MHz)	Electric Field Strength (E) (V/m)	Magnetic Field Strength (H) (A/m)	Power Density (S) (mW/cm ²)	Averaging Time E ² , H ² or S (minutes)
0.3-3.0	614	1.63	(100)*	6
3.0-30	1,842 / f	4.89 / f	(900 / f ²)*	6
30-300	61.4	0.163	1.0	6
300-1,500	-	-	F / 300	6
1,500-100,000	-	-	5	6

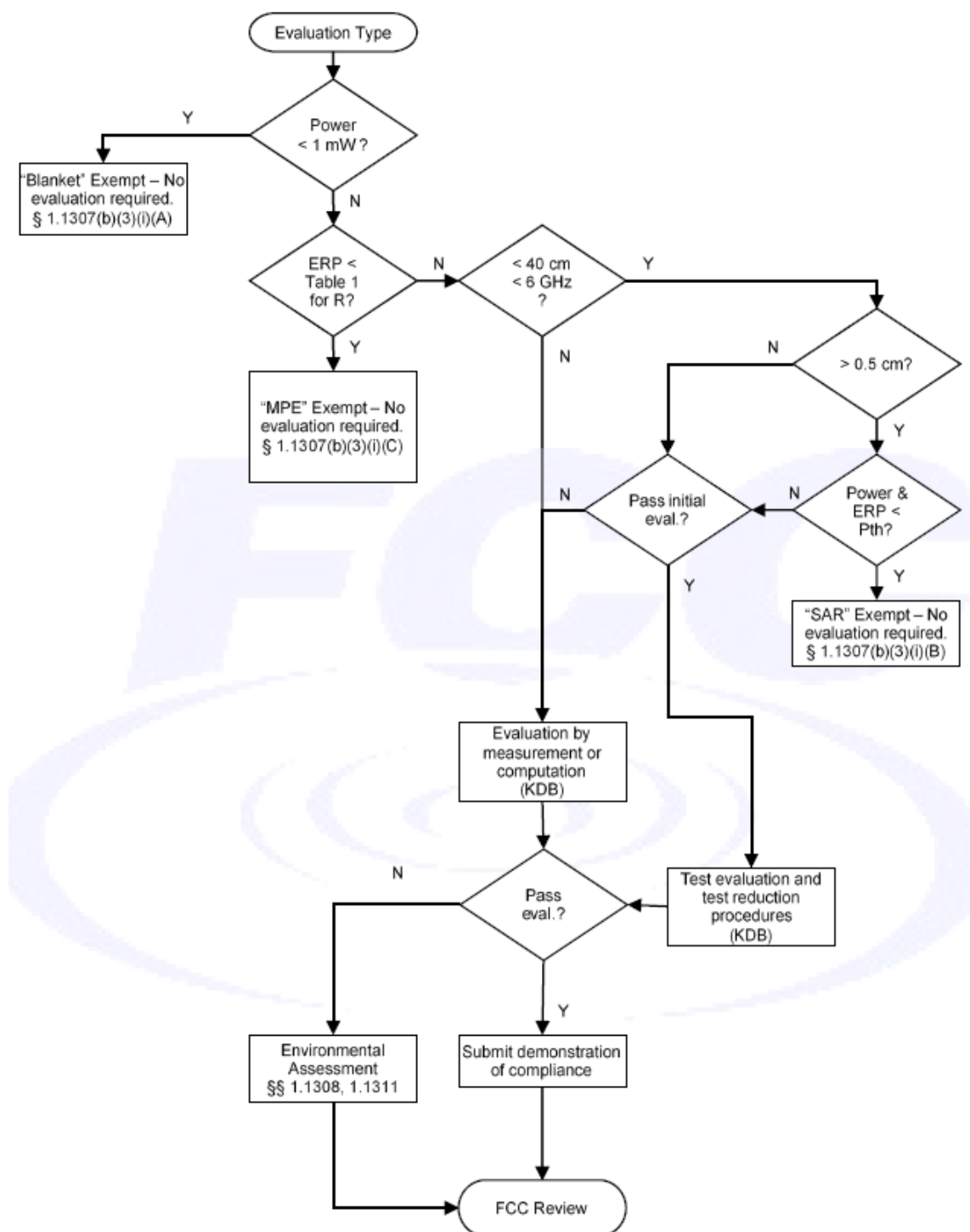
f = frequency in MHz. * = Plane-wave equivalent power density.

4. RF Exposure Assessment

4.1 Exemption Evaluation

Exemption evaluation was performed according to the appendix A and B in KDB447498 D04.

The General Sequence for Determination of Procedure demonstrated in Figure A.1 of KDB447498 D04 was applied.



4.2 Human Exposure Assessment

Due to the design and installation of this product, it is not possible to conduct SAR evaluation. This is because client either manufactures or supplies the antenna(s) that will be used in the installation of this product. Therefore, this product will be evaluated as a mobile device per 47 CFR § 1.1310 titled "Radiofrequency radiation exposure limits", generally referred to as MPE limits.

In 47 CFR § 2.1091, paragraph (b) defines a mobile device as "a transmitting device designed to be used in other than fixed locations and to generally be used in such a way that a separation distance of at least 20 cm is normally maintained between the transmitter's radiating structure(s) and the body of the user or nearby persons."

Exposure evaluation

$$S_{eirp} = \frac{EIRP}{4\pi d^2} = \frac{PG}{4\pi d^2} (W / m^2)$$

Where

S: is the input power (W);

G: is the antenna gain;

d : is the distance between antennas and evaluation point (m).

5. Maximum Tune-up Power

Operate Band	Frequency (MHz)	ANT 0
Bluetooth	2402 - 2480	3.5

6. Test Result

Band	Frequency (MHz)	Distance (cm) [R]	Tune-up Power (dBm) [P]	ANT Gain (dBi)	Numeric Gain [G]	Duty Cycle	Power with Duty cycle (mW) [P]x[G]	Power Density (mW/cm ²) [S]	Standalone Limit (mW/cm ²)	Antenna
Bluetooth	2402 - 2480	20.0	3.50	1.82	1.52	1	3.40	0.0007	1.00	ANT 0

Note:

1. Mobile or fixed location transmitters, minimum separation distance is 0.2 m, even if calculations indicate MPE distance is less.
2. The maximum power and gain were applied to evaluate MPE.
3. The Numeric Gain calculated by $10^{(\text{ant. Gain(dBi)} / 10)}$.

7. Conclusion

The result shows that this device is compliance with the exposure limits in 47 CFR §1.1310.

---END---