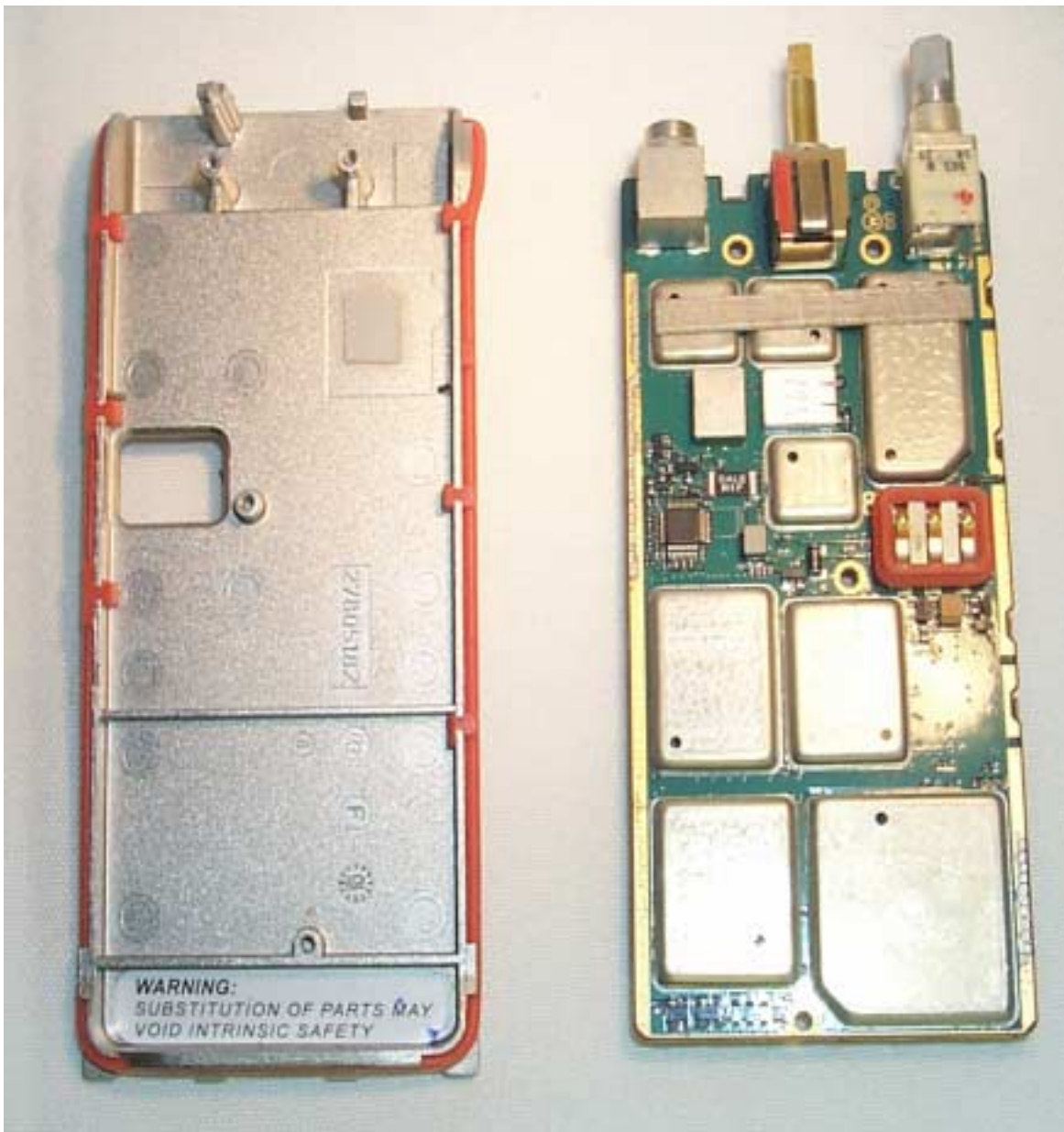




REAR VIEW WITH CIRCUIT BOARD REMOVED FROM HOUSING
(MATING SURFACES OF BOARD AND HOUSING ARE SHOWN)



**REAR VIEW WITH CIRCUIT BOARD REMOVED FROM CHASSIS
(MATING SURFACES OF CIRCUIT BOARD AND CHASSIS ARE SHOWN)**