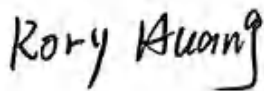


# TEST REPORT

Report No.	CISRR25041617905
Project No.	CISR250416179
FCC ID	2BFQI-X23PRO
Applicant	Jiangxi Jichi Technology Co., Ltd.
Address	PlantNo.3,BlockB13-1-2,B14-1,JinggangshanEconomicandDevelopment Zone,Ji'anCity,Jiangxi Province,China
Manufacturer	Jiangxi Jichi Technology Co., Ltd.
Address	PlantNo.3,BlockB13-1-2,B14-1,JinggangshanEconomicandDevelopment Zone,Ji'anCity,Jiangxi Province,China
Product Name	MOUSE
Trade Mark	N/A
Model/Type reference	X23Pro
Listed Model(s)	N/A
Standard	47 CFR Part 15.247
Test date	April 17, 2025 to April 22, 2025
Issue date	April 23, 2025
Test result	Complied



Prepared by: Rory Huang



Approved by: Genry Long

The test results relate only to the tested samples.

The test report should not be reproduced except in full without the written approval of Shenzhen Bangce Testing Technology Co., Ltd.

## Contents

<b>1. REPORT VERSION .....</b>	<b>3</b>
<b>2. TEST DESCRIPTION .....</b>	<b>4</b>
<b>3. SUMMARY .....</b>	<b>5</b>
3.1. Product Description * .....	5
3.2. Radio Specification Description * .....	5
3.3. Modification of EUT .....	6
3.4. Deviation from standards .....	6
3.5. Testing Site .....	6
<b>4. TEST CONFIGURATION .....</b>	<b>7</b>
4.1. Test frequency list .....	7
4.2. Descriptions of test mode .....	7
4.3. Support unit used in test configuration .....	7
4.4. Test sample information .....	7
4.5. Environmental conditions .....	7
4.6. Equipment Used during the Test .....	8
<b>5. TEST RESULTS .....</b>	<b>10</b>
5.1. Evaluation Results (Evaluation) .....	10
5.1.1. Antenna Requirement .....	10
5.2. Radio Spectrum Matter Test Results (RF) .....	11
5.2.1. Conducted Emission at AC power line .....	11
5.2.2. 6dB Bandwidth .....	14
5.2.3. Maximum Conducted Output Power .....	15
5.2.4. Power Spectral Density .....	16
5.2.5. Conducted band edge and spurious emission .....	17
5.2.6. Radiated band edge emission .....	18
5.2.7. Radiated Spurious Emission (below 1GHz) .....	24
5.2.8. Radiated Spurious Emission (Above 1GHz) .....	28
<b>6. TEST SETUP PHOTOS .....</b>	<b>36</b>
<b>7. EXTERNAL AND INTERNAL PHOTOS .....</b>	<b>38</b>
7.1. External Photos .....	38
7.2. Internal Photos .....	46

## 1. REPORT VERSION

Version No.	Issue date	Description
00	April 23, 2025	Original

## 2. TEST DESCRIPTION

No.	Test Item	Standard Requirement	Result
1	Antenna Requirement	47 CFR 15.203	Pass
2	Conducted Emission at AC power line	47 CFR 15.207(a)	Pass
3	6dB Bandwidth	47 CFR 15.247(a)(2)	Pass
4	Maximum Conducted Output Power	47 CFR 15.247(b)(3)	Pass
5	Power Spectral Density	47 CFR 15.247(e)	Pass
6	Conducted band edge and spurious emission	47 CFR 15.247(d), 15.209, 15.205	Pass
7	Radiated band edge emission	47 CFR 15.247(d), 15.209, 15.205	Pass
8	Radiated Spurious Emission (below 1GHz)	47 CFR 15.247(d), 15.209, 15.205	Pass
9	Radiated Spurious Emission (Above 1GHz)	47 CFR 15.247(d), 15.209, 15.205	Pass

Note:

- The measurement uncertainty is not included in the test result.

### 3. SUMMARY

#### 3.1. Product Description \*

Main unit information:	
Product Name:	MOUSE
Trade Mark:	N/A
Model No.:	X23Pro
Listed Model(s):	N/A
Model difference:	N/A
Power supply:	N/A
Hardware version:	N/A
Software version:	N/A
Accessory unit (AU) information:	
Battery:	DC 3.7V

#### 3.2. Radio Specification Description \*

Modulation type:	GFSK
Operation frequency:	2402MHz to 2480MHz
Channel number:	40
Channel separation:	2MHz
Antenna type:	PCB
Antenna gain:	2.94dBi

Note:

- 1) \*: Since the above information is provided by the applicant relevant results or conclusions of this report are only made for these information, Bangce is not responsible for the authenticity, integrity and results of the information and/or the validity of the conclusion.
- 2) Operation frequency list as follow:

Channel	Frequency (MHz)	Channel	Frequency (MHz)	Channel	Frequency (MHz)	Channel	Frequency (MHz)
0	2402	10	2422	20	2442	30	2462
1	2404	11	2424	21	2444	31	2464
2	2406	12	2426	22	2446	32	2466
3	2408	13	2428	23	2448	33	2468
4	2410	14	2430	24	2450	34	2470
5	2412	15	2432	25	2452	35	2472
6	2414	16	2434	26	2454	36	2474

7	2416	17	2436	27	2456	37	2476
8	2418	18	2438	28	2458	38	2478
9	2420	19	2440	29	2460	39	2480

### 3.3. Modification of EUT

No modifications are made to the EUT during all test items.

### 3.4. Deviation from standards

None

### 3.5. Testing Site

Laboratory Name	Shenzhen Bangce Testing Technology Co., Ltd.
Laboratory Location	101, building 10, Yunli Intelligent Park, Shutianpu community, Matian Street, Guangming District, Shenzhen, Guangdong, China
Contact information	Tel: 86-755-2319 6848, email: <a href="mailto:service@cis-cn.net">service@cis-cn.net</a> Website: <a href="http://www.cis-cn.net/">http://www.cis-cn.net/</a>
FCC registration number	736346
FCC designation number	CN1372

## 4. TEST CONFIGURATION

### 4.1. Test frequency list

Lowest Channel (LCH) (MHz)	Middle Channel (MCH) (MHz)	Highest Channel (HCH) (MHz)
2402	2440	2480

### 4.2. Descriptions of test mode

No	Test mode	Description
TM1	TX mode	Keep the EUT in continuously transmitting mode with GFSK modulation at lowest, middle and highest channel.
TM2	Link mode	Keep the EUT in Bluetooth linking mode with AE.
TM3	Charging mode	Keep the EUT in charging status

### 4.3. Support unit used in test configuration

The EUT has been associated with peripherals and configuration operated in a manner tended to maximize its emission characteristics in a typical application.

The following peripheral devices and interface cables were connected during the measurement:

Item	Equipment name	Trade Name	Model No.
1	PC	Lenovo	ThinkPad
2	Adapter	Guangdong Sangu Technology Co. Ltd	SG-0501000AU

### 4.4. Test sample information

Type	Sample No.
Engineer sample	CISR250416179-S01
Normal sample	CISR250416179-S02

### 4.5. Environmental conditions

Type	Requirement
Temperature:	15~35°C
Relative Humidity:	25~75%
Air Pressure:	860~1060mbar

#### 4.6. Equipment Used during the Test

Conducted Emission at AC power line						
Item	Equipment name	Manufacturer	Model	Serial No.	Calibration date	Due date
1	EMI Test Receiver	Rohde&schwarz	ESC17	100853	2025-01-08	2026-01-07
2	Artificial power network	Schwarzbeck	NSLK8127	8127-01096	2025-01-08	2026-01-07
3	8-wire Impedance Stabilization Network	Schwarzbeck	NTFM 8158	8158-00337	2025-01-08	2026-01-07
4	Artificial power network	Schwarzbeck	ENV216	/	2025-01-08	2026-01-07

Emissions in non-restricted frequency bands 6dB Bandwidth Maximum Conducted Output Power Power Spectral Density						
Item	Equipment name	Manufacturer	Model	Serial No.	Calibration date	Due date
1	MXG RF Signal Generator	Agilent	N5181A	MY50145362	2025-01-08	2026-01-07
2	Spectrum analyzer	R&S	FSV-40N	102130	2025-01-08	2026-01-07
3	Vector Signal Generator	Agilent	N5182A	MY50142364	2025-01-08	2026-01-07

Band edge emissions (Radiated) Emissions in frequency bands (below 1GHz) Emissions in frequency bands (above 1GHz)						
Item	Equipment name	Manufacturer	Model	Serial No.	Calibration date	Due date
1	EMI Test Receiver	Rohde&schwarz	ESC17	100853	2025-01-08	2026-01-07
2	Amplifier	Tonscend	TAP9K3G 40	AP23A8060270	2025-01-08	2026-01-07
3	Prime amplifier	Tonscend	TAP0101 8050	AP23A8060280	2025-01-08	2026-01-07
4	9*6*6 anechoic chamber	SKET	9.3*6.3*6	N/A	2024-09-02	2027-09-01
5	Spectrum analyzer	Agilent	N9020A	MY50530263	2025-01-08	2026-01-07
6	Spectrum analyzer	R&S	FSV-40N	102130	2025-01-08	2026-01-07
7	Bilog Antenna	Schwarzbeck	VULB 9163	1463	2023-01-09	2026-01-08
8	Horn Antenna	SCHWARZBECK	BBHA 9120 D	2487	2023-01-09	2026-01-08
9	Active Loop Antenna	SCHWARZBECK	FMZB 1519B	/	2023-01-09	2026-01-08
10	RF Cable	Tonscend	Cable 1	/	2025-01-08	2026-01-07



11	RF Cable	Tonscend	Cable 2	/	2025-01-08	2026-01-07
12	RF Cable	SKET	Cable 3	/	2025-01-08	2026-01-07
13	L.I.S.N.#1	Schwarzbeck	NSLK812 7	/	2025-01-08	2026-01-07
14	L.I.S.N.#2	ROHDE&SCHWA RZ	ENV216	/	2025-01-08	2026-01-07
15	Horn Antenna	SCHWARZBECK	BBHA917 0	1130	2023-01-09	2026-01-08
16	Preamplifier	Tonscend	TAP1804 0048	AP21C806126	2025-01-08	2026-01-07
17	Variable-frequency power source	Pinhong	PH1110	/	2025-01-08	2026-01-07
18	6dB Attenuator	SKET	DC-6G	/	2025-01-08	2026-01-07
19	Antenna tower	SKT	Bk-4AT- BS	AT202104010 1-V1	2025-01-08	2026-01-07

## **5. TEST RESULTS**

### **5.1. Evaluation Results (Evaluation)**

#### **5.1.1. Antenna Requirement**

<b>Test Requirement:</b>	Refer to 47 CFR Part 15.203, an intentional radiator shall be designed to ensure that no antenna other than that furnished by the responsible party shall be used with the device. The use of a permanently attached antenna or of an antenna that uses a unique coupling to the intentional radiator shall be considered sufficient to comply with the provisions of this section.
--------------------------	---

##### **5.1.1.1. Test Result**

Pass

##### **5.1.1.2. Conclusion:**

The EUT antenna is PCB(2.94dBi), the directional gain of the antenna less than 6dBi. It comply with the standard requirement. In case of replacement of broken antenna the same antenna type must be used. Antenna structure please refer to the EUT internal photographs antenna photo.
--

## 5.2. Radio Spectrum Matter Test Results (RF)

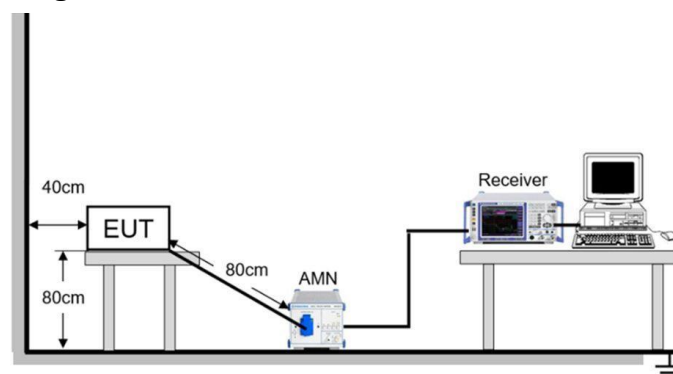
### 5.2.1. Conducted Emission at AC power line

Test Requirement:	Refer to 47 CFR 15.207(a), Except as shown in paragraphs (b) and (c) of this section, for an intentional radiator that is designed to be connected to the public utility (AC) power line, the radio frequency voltage that is conducted back onto the AC power line on any frequency or frequencies, within the band 150 kHz to 30 MHz, shall not exceed the limits in the following table, as measured using a 50 $\mu$ H/50 ohms line impedance stabilization network (LISN).		
Test Limit:	Frequency of emission (MHz)	Conducted limit (dB $\mu$ V)	
		Quasi-peak	Average
	0.15-0.5	66 to 56*	56 to 46*
	0.5-5	56	46
	5-30	60	50
*Decreases with the logarithm of the frequency.			
Test Method:	ANSI C63.10-2020 section 6.2		
Procedure:	<ol style="list-style-type: none"> <li>1. The EUT was setup according to ANSI C63.10 requirements.</li> <li>2. The EUT was placed on a platform of nominal size, 1 m by 1.5 m, raised 80 cm above the conducting ground plane. The vertical conducting plane was located 40 cm to the rear of the EUT. All other surfaces of EUT were at least 80 cm from any other grounded conducting surface.</li> <li>3. The EUT and simulators are connected to the main power through a line impedances stabilization network (LISN). The LISN provides a 50 ohm /50uH coupling impedance for the measuring equipment.</li> <li>4. The peripheral devices are also connected to the main power through a LISN. (Refer to the block diagram of the test setup and photographs)</li> <li>5. Each current-carrying conductor of the EUT power cord, except the ground (safety) conductor, was individually connected through a LISN to the input power source.</li> <li>6. The excess length of the power cord between the EUT and the LISN receptacle were folded back and forth at the center of the lead to form a bundle not exceeding 40 cm in length.</li> <li>7. Conducted emissions were investigated over the frequency range from 0.15MHz to 30MHz using a receiver bandwidth of 9 kHz.</li> <li>8. During the above scans, the emissions were maximized by cable manipulation.</li> </ol>		

#### 5.2.1.1. E.U.T. Operation

Operating Environment:					
Temperature:	23.5 °C	Humidity:	56.7 %	Atmospheric Pressure:	102 kPa
Pre test mode:	TM1, TM2, TM3				
Final test mode:	TM1, TM2, TM3				

#### 5.2.1.2. Test Setup Diagram



### 5.2.1.3. Test Result

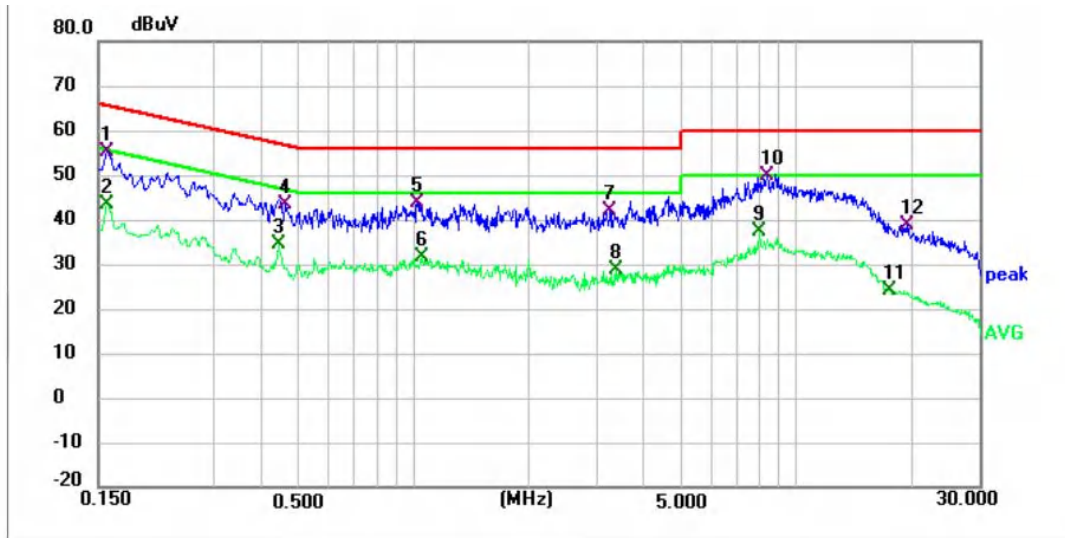
Pass

### 5.2.1.4. Test Data

Note:

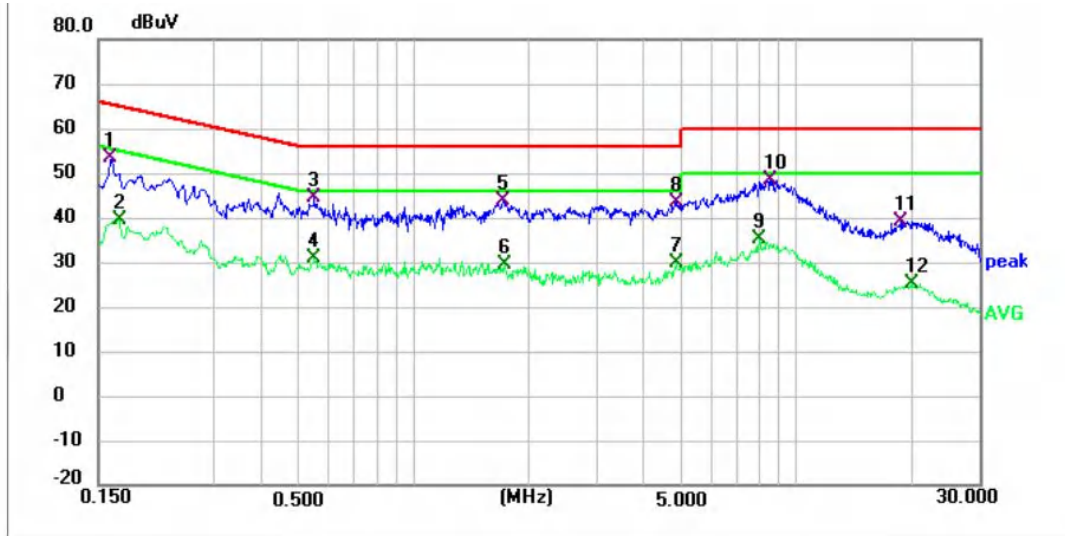
Have pre-scan all test mode, found TM3 mode which it was worst case, so only show the worst case's data on this report.

Mode3 / Line: Line



No.	Frequency (MHz)	Reading (dBuV)	Factor (dB)	Level (dBuV)	Limit (dBuV)	Margin (dB)	Detector
1	0.158	44.99	10.27	55.26	65.57	-10.31	QP
2	0.158	33.12	10.27	43.39	55.57	-12.18	AVG
3	0.442	24.18	10.27	34.45	47.02	-12.57	AVG
4	0.462	33.08	10.28	43.36	56.66	-13.30	QP
5	1.022	33.40	10.39	43.79	56.00	-12.21	QP
6	1.050	21.13	10.39	31.52	46.00	-14.48	AVG
7	3.274	31.00	11.00	42.00	56.00	-14.00	QP
8	3.390	17.68	11.05	28.73	46.00	-17.27	AVG
9	7.998	24.41	12.92	37.33	50.00	-12.67	AVG
10 *	8.398	36.70	13.03	49.73	60.00	-10.27	QP
11	17.490	8.53	15.67	24.20	50.00	-25.80	AVG
12	19.326	23.48	15.39	38.87	60.00	-21.13	QP

Mode3 / Line: Neutral



No.	Frequency (MHz)	Reading (dBuV)	Factor (dB)	Level (dBuV)	Limit (dBuV)	Margin (dB)	Detector
1	0.162	43.27	10.28	53.55	65.36	-11.81	QP
2	0.170	29.25	10.27	39.52	54.96	-15.44	AVG
3	0.550	34.14	10.32	44.46	56.00	-11.54	QP
4	0.550	20.58	10.32	30.90	46.00	-15.10	AVG
5	1.710	33.36	10.56	43.92	56.00	-12.08	QP
6	1.734	19.05	10.57	29.62	46.00	-16.38	AVG
7	4.862	18.20	11.63	29.83	46.00	-16.17	AVG
8	4.890	31.83	11.64	43.47	56.00	-12.53	QP
9	7.998	22.41	12.94	35.35	50.00	-14.65	AVG
10 *	8.586	35.38	13.10	48.48	60.00	-11.52	QP
11	18.730	23.61	15.66	39.27	60.00	-20.73	QP
12	20.018	9.51	15.70	25.21	50.00	-24.79	AVG

Note:

- 1). Result = Reading +Correct (Insertion Loss + Cable Loss + Attenuator Factor)
- 2). Margin = Result - Limit

### 5.2.2. 6dB Bandwidth

Test Requirement:	47 CFR 15.247(a)(2)
Test Limit:	Refer to 47 CFR 15.247(a)(2), Systems using digital modulation techniques may operate in the 902-928 MHz, and 2400-2483.5 MHz bands. The minimum 6 dB bandwidth shall be at least 500 kHz.
Test Method:	ANSI C63.10-2020, section 11.8
Procedure:	<p>11.8.1 Option 1</p> <p>The steps for the first option are as follows:</p> <ol style="list-style-type: none"> <li>Set RBW = shall be in the range of 1% to 5% of the OBW but not less than 100 kHz.</li> <li>Set the VBW <math>\geq [3 \times \text{RBW}]</math>.</li> <li>Detector = peak.</li> <li>Trace mode = max-hold.</li> <li>Sweep = No faster than coupled (auto) time.</li> <li>Allow the trace to stabilize.</li> <li>Measure the maximum width of the emission by placing two markers, one at the lowest frequency and the other at the highest frequency of the envelope of the spectral display, such that each marker is at or slightly below the “-6 dB down amplitude”. If a marker is below this “-6 dB down amplitude” value, then it shall be as close as possible to this value.</li> </ol> <p>11.8.2 Option 2</p> <p>The automatic bandwidth measurement capability of an instrument may be employed using the X dB bandwidth mode with X set to 6 dB, if the functionality described in 11.8.1 (i.e., RBW = 100 kHz, VBW <math>\geq 3 \times \text{RBW}</math>, and peak detector with maximum hold) is implemented by the instrumentation function.</p> <p>When using this capability, care shall be taken so that the bandwidth measurement is not influenced by any intermediate power nulls in the fundamental emission that might be <math>\geq 6</math> dB.</p>

#### 5.2.2.1. E.U.T. Operation

Operating Environment:					
Temperature:	22.3 °C	Humidity:	55.8 %	Atmospheric Pressure:	102 kPa
Pre test mode:	TM1				
Final test mode:	TM1				

#### 5.2.2.2. Test Setup Diagram



#### 5.2.2.3. Test Result

Pass

#### 5.2.2.4. Test Data

Please Refer to Appendix for Details.

### 5.2.3. Maximum Conducted Output Power

Test Requirement:	47 CFR 15.247(b)(3)
Test Limit:	Refer to 47 CFR 15.247(b)(3), For systems using digital modulation in the 902-928 MHz, 2400-2483.5 MHz, and 5725-5850 MHz bands: 1 Watt. As an alternative to a peak power measurement, compliance with the one Watt limit can be based on a measurement of the maximum conducted output power. Maximum Conducted Output Power is defined as the total transmit power delivered to all antennas and antenna elements averaged across all symbols in the signaling alphabet when the transmitter is operating at its maximum power control level. Power must be summed across all antennas and antenna elements. The average must not include any time intervals during which the transmitter is off or is transmitting at a reduced power level. If multiple modes of operation are possible (e.g., alternative modulation methods), the maximum conducted output power is the highest total transmit power occurring in any mode.
Test Method:	ANSI C63.10-2020 section 11.9.1
Procedure:	ANSI C63.10-2020, section 11.9.1 Maximum peak conducted output power

#### 5.2.3.1. E.U.T. Operation

Operating Environment:					
Temperature:	22.3 °C	Humidity:	55.8 %	Atmospheric Pressure:	102 kPa
Pre test mode:	TM1				
Final test mode:	TM1				

#### 5.2.3.2. Test Setup Diagram



#### 5.2.3.3. Test Result

Pass

#### 5.2.3.4. Test Data

Please Refer to Appendix for Details.

#### 5.2.4. Power Spectral Density

Test Requirement:	47 CFR 15.247(e)
Test Limit:	Refer to 47 CFR 15.247(e), For digitally modulated systems, the power spectral density conducted from the intentional radiator to the antenna shall not be greater than 8 dBm in any 3 kHz band during any time interval of continuous transmission. This power spectral density shall be determined in accordance with the provisions of paragraph (b) of this section. The same method of determining the conducted output power shall be used to determine the power spectral density.
Test Method:	ANSI C63.10-2020, section 11.10
Procedure:	ANSI C63.10-2020, section 11.10, Maximum power spectral density level in the fundamental emission

##### 5.2.4.1. E.U.T. Operation

Operating Environment:					
Temperature:	22.3 °C	Humidity:	55.8 %	Atmospheric Pressure:	102 kPa
Pre test mode:	TM1				
Final test mode:	TM1				

##### 5.2.4.2. Test Setup Diagram



##### 5.2.4.3. Test Result

Pass

##### 5.2.4.4. Test Data

Please Refer to Appendix for Details.



### 5.2.5. Conducted band edge and spurious emission

Test Requirement:	47 CFR 15.247(d), 15.209, 15.205
Test Limit:	Refer to 47 CFR 15.247(d), In any 100 kHz bandwidth outside the frequency band in which the spread spectrum or digitally modulated intentional radiator is operating, the radio frequency power that is produced by the intentional radiator shall be at least 20 dB below that in the 100 kHz bandwidth within the band that contains the highest level of the desired power, based on either an RF conducted or a radiated measurement, provided the transmitter demonstrates compliance with the peak conducted power limits. If the transmitter complies with the conducted power limits based on the use of RMS averaging over a time interval, as permitted under paragraph (b)(3) of this section, the attenuation required under this paragraph shall be 30 dB instead of 20 dB. Attenuation below the general limits specified in § 15.209(a) is not required.
Test Method:	ANSI C63.10-2020 section 11.11
Procedure:	ANSI C63.10-2020 Section 11.11.1, Section 11.11.2, Section 11.11.3

#### 5.2.5.1. E.U.T. Operation

Operating Environment:					
Temperature:	22.3 °C	Humidity:	55.8 %	Atmospheric Pressure:	102 kPa
Pre test mode:	TM1				
Final test mode:	TM1				

#### 5.2.5.2. Test Setup Diagram



#### 5.2.5.3. Test Result

Pass

#### 5.2.5.4. Test Data

Please Refer to Appendix for Details.

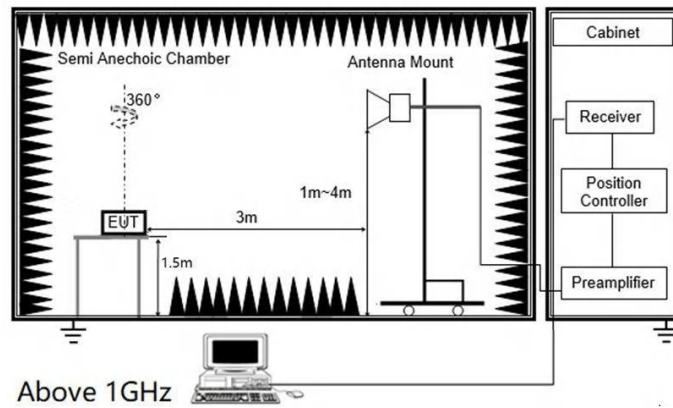
### 5.2.6. Radiated band edge emission

Test Requirement:	Refer to 47 CFR 15.247(d), In addition, radiated emissions which fall in the restricted bands, as defined in § 15.205(a), must also comply with the radiated emission limits specified in § 15.209(a)(see § 15.205(c)).`		
Test Limit:	Frequency (MHz)	Field strength (microvolts/meter)	Measurement distance (meters)
	0.009-0.490	2400/F(kHz)	300
	0.490-1.705	24000/F(kHz)	30
	1.705-30.0	30	30
	30-88	100 **	3
	88-216	150 **	3
	216-960	200 **	3
	Above 960	500	3
<p>** Except as provided in paragraph (g), fundamental emissions from intentional radiators operating under this section shall not be located in the frequency bands 54-72 MHz, 76-88 MHz, 174-216 MHz or 470-806 MHz. However, operation within these frequency bands is permitted under other sections of this part, e.g., §§ 15.231 and 15.241.</p> <p>In the emission table above, the tighter limit applies at the band edges.</p> <p>The emission limits shown in the above table are based on measurements employing a CISPR quasi-peak detector except for the frequency bands 9–90 kHz, 110–490 kHz and above 1000 MHz. Radiated emission limits in these three bands are based on measurements employing an average detector.</p>			
Test Method:	ANSI C63.10-2020 section 6.10		
Procedure:	<p>1. EUT was setup and tested according to ANSI C63.10 .</p> <p>2. The EUT is placed on a turn table which is 1.5 meter above ground. The turn table is rotated 360 degrees to determine the position of the maximum emission level.</p> <p>3. The EUT was positioned such that the distance from antenna to the EUT was 3 meters.</p> <p>4. The antenna is scanned from 1 meter to 4 meters to find out the maximum emission level. This is repeated for both horizontal and vertical polarization of the antenna. In order to find the maximum emission, all of the interface cables were manipulated according to ANSI C63.10 on radiated measurement.</p> <p>5. Use the following spectrum analyzer settings:</p> <p>a) Span shall wide enough to fully capture the emission being measured</p> <p>b) Set RBW=1MHz, VBW=3MHz for &gt;1GHz, Sweep time=auto, Detector=peak, Trace=max hold for Peak measurement</p> <p>For average measurement: use duty cycle correction factor method (DCCF), Averager level = Peak level + DCCF</p>		

#### 5.2.6.1. E.U.T. Operation

Operating Environment:					
Temperature:	22.3 °C	Humidity:	55.9 %	Atmospheric Pressure:	103 kPa
Pre test mode:	TM1, TM2, TM3				
Final test mode:	TM1, TM2, TM3				

### 5.2.6.2. Test Setup Diagram



### 5.2.6.3. Test Result

Pass

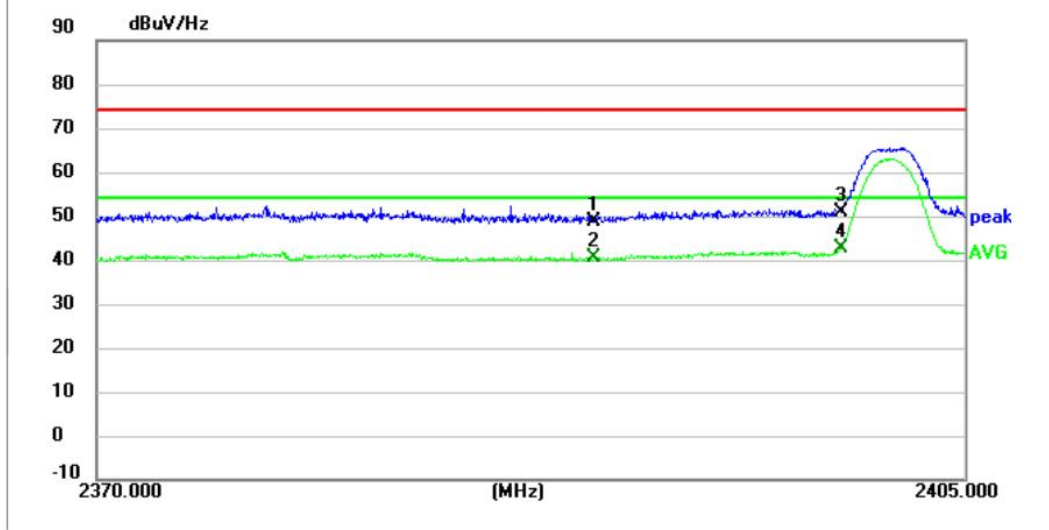
#### 5.2.6.4. Test Data

Note:

- 1) Level= Reading + Factor; Factor =Antenna Factor+ Cable Loss- Preamp Factor
- 2) Margin = Limit - Level
- 3) Average measurement was not performed if peak level is lower than average limit
- 4) Have pre-scan all test mode, found TM1 mode which it was worst case, so only show the worst case' s data on this report.
- 5) The other emission levels were very low against the limit.

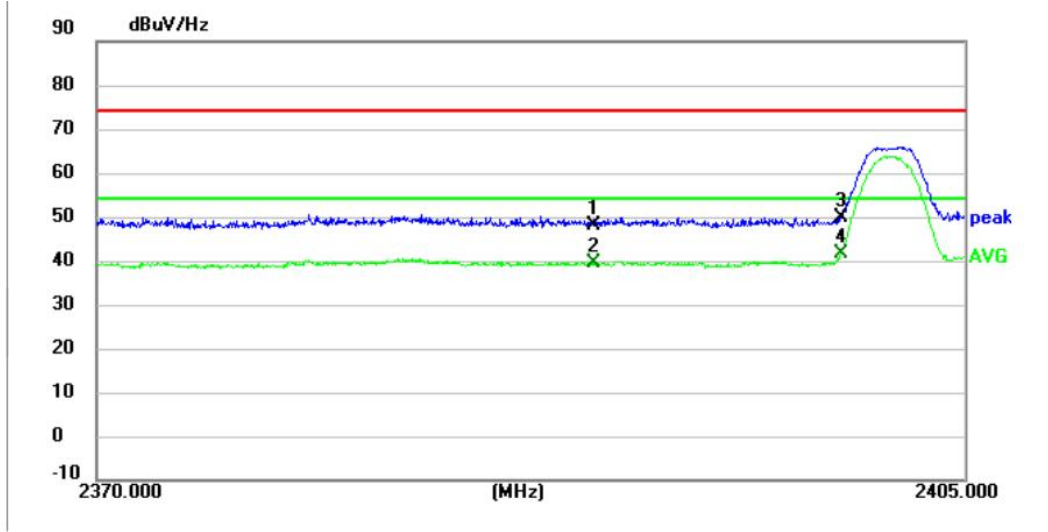
Have pre-scan all test mode, found TM1 mode which it was worst case, so only show the worst case's data on this report.

Mode1 / Polarization: Horizontal / CH: L



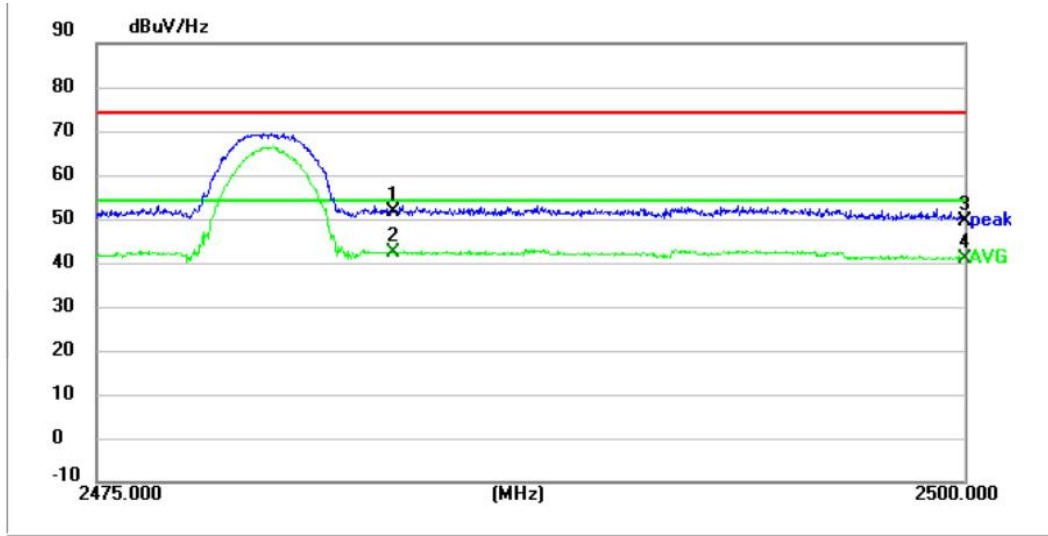
No.	Frequency (MHz)	Reading (dBuV)	Factor (dB)	Level (dBuV/Hz)	Limit (dBuV/Hz)	Margin (dB)	Detector
1	2390.0000	46.58	2.34	48.92	74.00	25.08	peak
2	2390.0000	38.14	2.34	40.48	54.00	13.52	AVG
3	2400.0000	48.60	2.38	50.98	74.00	23.02	peak
4 *	2400.0000	40.15	2.38	42.53	54.00	11.47	AVG

Mode1 / Polarization: Vertical / CH: L



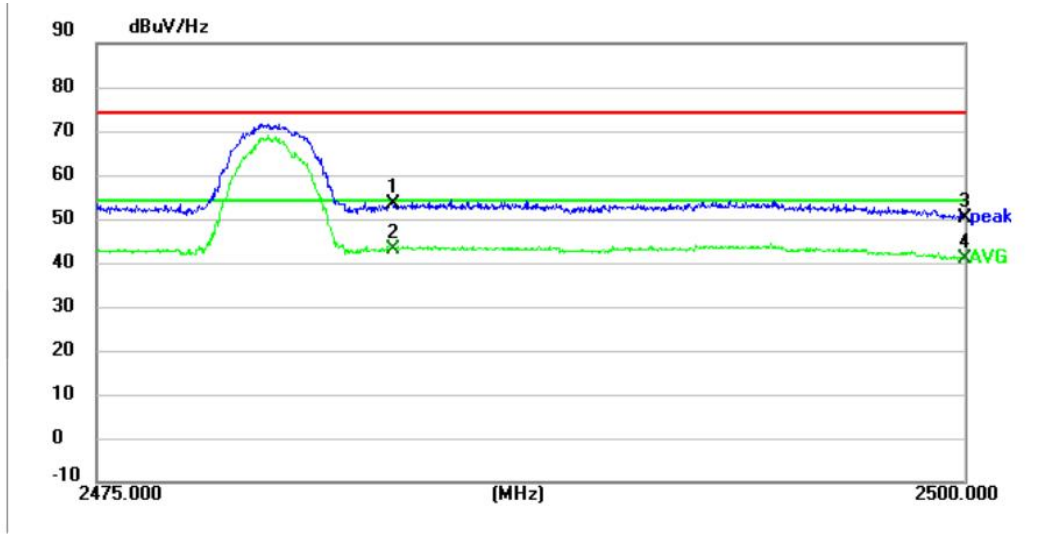
No.	Frequency (MHz)	Reading (dBuV)	Factor (dB)	Level (dBuV/Hz)	Limit (dBuV/Hz)	Margin (dB)	Detector
1	2390.0000	45.76	2.34	48.10	74.00	25.90	peak
2	2390.0000	37.04	2.34	39.38	54.00	14.62	AVG
3	2400.0000	47.52	2.38	49.90	74.00	24.10	peak
4 *	2400.0000	39.17	2.38	41.55	54.00	12.45	AVG

Mode1 / Polarization: Horizontal / CH: H



No.	Frequency (MHz)	Reading (dBuV)	Factor (dB)	Level (dBuV/Hz)	Limit (dBuV/Hz)	Margin (dB)	Detector
1	2483.5000	48.87	2.66	51.53	74.00	22.47	peak
2 *	2483.5000	39.54	2.66	42.20	54.00	11.80	AVG
3	2500.0000	46.60	2.80	49.40	74.00	24.60	peak
4	2500.0000	38.09	2.80	40.89	54.00	13.11	AVG

Mode1 / Polarization: Vertical / CH: H



No.	Frequency (MHz)	Reading (dBuV)	Factor (dB)	Level (dBuV/Hz)	Limit (dBuV/Hz)	Margin (dB)	Detector
1	2483.5000	50.87	2.66	53.53	74.00	20.47	peak
2 *	2483.5000	40.21	2.66	42.87	54.00	11.13	AVG
3	2500.0000	47.34	2.80	50.14	74.00	23.86	peak
4	2500.0000	37.95	2.80	40.75	54.00	13.25	AVG

### 5.2.7. Radiated Spurious Emission (below 1GHz)

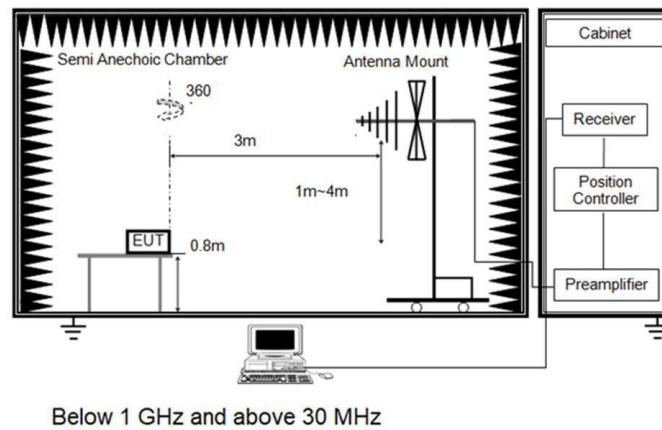
Test Requirement:	Refer to 47 CFR 15.247(d), In addition, radiated emissions which fall in the restricted bands, as defined in § 15.205(a), must also comply with the radiated emission limits specified in § 15.209(a)(see § 15.205(c)).`		
Test Limit:	Frequency (MHz)	Field strength (microvolts/meter)	Measurement distance (meters)
	0.009-0.490	2400/F(kHz)	300
	0.490-1.705	24000/F(kHz)	30
	1.705-30.0	30	30
	30-88	100 **	3
	88-216	150 **	3
	216-960	200 **	3
	Above 960	500	3
<p>** Except as provided in paragraph (g), fundamental emissions from intentional radiators operating under this section shall not be located in the frequency bands 54-72 MHz, 76-88 MHz, 174-216 MHz or 470-806 MHz. However, operation within these frequency bands is permitted under other sections of this part, e.g., §§ 15.231 and 15.241.</p> <p>In the emission table above, the tighter limit applies at the band edges.</p> <p>The emission limits shown in the above table are based on measurements employing a CISPR quasi-peak detector except for the frequency bands 9–90 kHz, 110–490 kHz and above 1000 MHz. Radiated emission limits in these three bands are based on measurements employing an average detector.</p>			
Test Method:	ANSI C63.10-2020 section 6.6.4		
Procedure:	<ol style="list-style-type: none"> <li>1. The EUT was setup and tested according to ANSI C63.10.</li> <li>2. The EUT is placed on a turn table which is 0.8 meter above ground for below 1 GHz, and 1.5 m for above 1 GHz. The turn table is rotated 360 degrees to determine the position of the maximum emission level.</li> <li>3. The EUT was set 3 meters from the receiving antenna, which was mounted on the top of a variable height antenna tower.</li> <li>4. For each suspected emission, the EUT was arranged to its worst case and then tune the Antenna tower (from 1 m to 4 m) and turntable (from 0 degree to 360 degrees) to find the maximum reading. A pre-amp and a high pass filter are used for the test in order to get better signal level to comply with the guidelines.</li> <li>5. Set to the maximum power setting and enable the EUT transmit continuously.</li> <li>6. Use the following spectrum analyzer settings <ol style="list-style-type: none"> <li>a) Span shall wide enough to fully capture the emission being measured;</li> <li>b) RBW=120 kHz, VBW=300 kHz, Sweep=auto, Detector function=peak, Trace=max hold;</li> </ol> </li> </ol> <p>If the emission level of the EUT measured by the peak detector is 3 dB lower than the applicable limit, the peak emission level will be reported. Otherwise, the emission measurement will be repeated using the quasi-peak detector and reported.</p>		

#### 5.2.7.1. E.U.T. Operation

Operating Environment:					
Temperature:	22.3 °C	Humidity:	55.9 %	Atmospheric Pressure:	103 kPa
Pre test mode:	TM1, TM2, TM3				
Final test mode:	TM1, TM2, TM3				



### 5.2.7.2. Test Setup Diagram



### 5.2.7.3. Test Result

Pass

#### 5.2.7.4. Test Data

Note:

- 1) Level= Reading + Factor/Transd; Factor/Transd =Antenna Factor+ Cable Loss- Preamp Factor
- 2) Margin = Limit – Level
- 3) Average measurement was not performed if peak level is lower than average limit(54 dBuV/m) for above 1GHz.
- 4) The other emission levels were very low against the limit.
- 5) This test was performed with EUT in X, Y, Z position and the worse case was found when EUT in X position.

##### For 9 kHz ~ 30 MHz

The EUT was pre-scanned this frequency band, found the radiated level 20dB lower than the limit, so don't show data on this report.

##### For 30 MHz ~ 1000 MHz

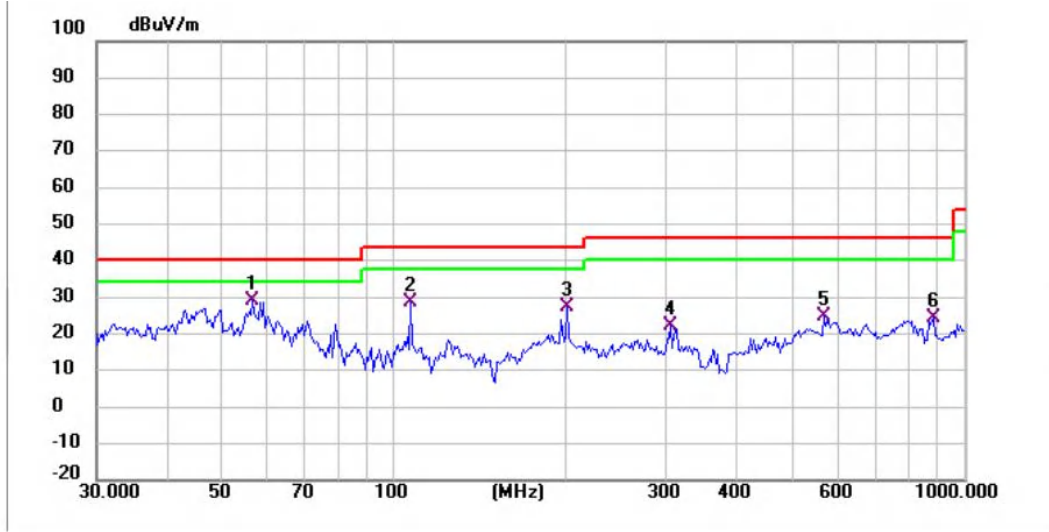
Have pre-scan all test mode, found TM1 mode CH00 which it was worst case, so only show the worst case's data on this report.

Mode1 / Polarization: Horizontal / CH: L



No.	Frequency (MHz)	Reading (dBuV)	Factor (dB/m)	Level (dBuV/m)	Limit (dBuV/m)	Margin (dB)	Detector
1	80.0805	58.46	-34.98	23.48	40.00	16.52	QP
2	53.6931	53.92	-29.97	23.95	40.00	16.05	QP
3 *	374.6225	62.14	-25.51	36.63	46.00	9.37	QP
4	475.4990	58.79	-22.70	36.09	46.00	9.91	QP
5	158.1123	60.88	-33.07	27.81	43.50	15.69	QP
6	766.0570	52.43	-17.09	35.34	46.00	10.66	QP

Mode1 / Polarization: Vertical / CH: L



No.	Frequency (MHz)	Reading (dBuV)	Factor (dB/m)	Level (dBuV/m)	Limit (dBuV/m)	Margin (dB)	Detector
1 *	56.3947	59.50	-30.40	29.10	40.00	10.90	QP
2	106.7587	59.16	-30.69	28.47	43.50	15.03	QP
3	200.6880	57.40	-29.83	27.57	43.50	15.93	QP
4	305.6800	49.25	-27.02	22.23	46.00	23.77	QP
5	566.6221	44.83	-20.15	24.68	46.00	21.32	QP
6	881.4067	39.52	-15.13	24.39	46.00	21.61	QP

Note:

1) For 9 kHz ~ 30 MHz Measurement

The EUT was pre-scanned this frequency band, found the radiated level 20dB lower than the limit, so don't show data on this report.

2) Level= Reading + Factor; Factor =Antenna Factor+ Cable Loss- Preamp Factor

3) Margin = Limit – Level

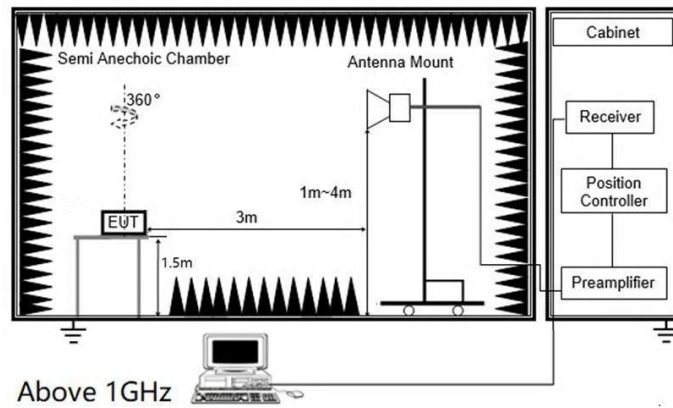
### 5.2.8. Radiated Spurious Emission (Above 1GHz)

Test Requirement:	In addition, radiated emissions which fall in the restricted bands, as defined in § 15.205(a), must also comply with the radiated emission limits specified in § 15.209(a)(see § 15.205(c)).`		
Test Limit:	Frequency (MHz)	Field strength (microvolts/meter)	Measurement distance (meters)
	0.009-0.490	2400/F(kHz)	300
	0.490-1.705	24000/F(kHz)	30
	1.705-30.0	30	30
	30-88	100 **	3
	88-216	150 **	3
	216-960	200 **	3
	Above 960	500	3
<p>** Except as provided in paragraph (g), fundamental emissions from intentional radiators operating under this section shall not be located in the frequency bands 54-72 MHz, 76-88 MHz, 174-216 MHz or 470-806 MHz. However, operation within these frequency bands is permitted under other sections of this part, e.g., §§ 15.231 and 15.241.</p> <p>In the emission table above, the tighter limit applies at the band edges.</p> <p>The emission limits shown in the above table are based on measurements employing a CISPR quasi-peak detector except for the frequency bands 9–90 kHz, 110–490 kHz and above 1000 MHz. Radiated emission limits in these three bands are based on measurements employing an average detector.</p>			
Test Method:	ANSI C63.10-2020 section 6.6.4		
Procedure:	<ol style="list-style-type: none"> <li>1. The EUT was setup and tested according to ANSI C63.10.</li> <li>2. The EUT is placed on a turn table which is 0.8 meter above ground for below 1 GHz, and 1.5 m for above 1 GHz. The turn table is rotated 360 degrees to determine the position of the maximum emission level.</li> <li>3. The EUT was set 3 meters from the receiving antenna, which was mounted on the top of a variable height antenna tower.</li> <li>4. For each suspected emission, the EUT was arranged to its worst case and then tune the Antenna tower (from 1 m to 4 m) and turntable (from 0 degree to 360 degrees) to find the maximum reading. A pre-amp and a high pass filter are used for the test in order to get better signal level to comply with the guidelines.</li> <li>5. Set to the maximum power setting and enable the EUT transmit continuously.</li> <li>6. Use the following spectrum analyzer settings <ol style="list-style-type: none"> <li>a) Span shall wide enough to fully capture the emission being measured;</li> <li>b) Set RBW=1MHz, VBW=3MHz for &gt;1GHz, Sweep time=auto, Detector=peak, Trace=max hold for Peak measurement</li> </ol> </li> </ol> <p>For average measurement: use duty cycle correction factor method (DCCF)Averager level = Peak level + DCCF</p>		

#### 5.2.8.1. E.U.T. Operation

Operating Environment:					
Temperature:	22.3 °C	Humidity:	55.9 %	Atmospheric Pressure:	103 kPa
Pre test mode:	TM1, TM2, TM3				
Final test mode:	TM1, TM2, TM3				

### 5.2.8.2. Test Setup Diagram



### 5.2.8.3. Test Result

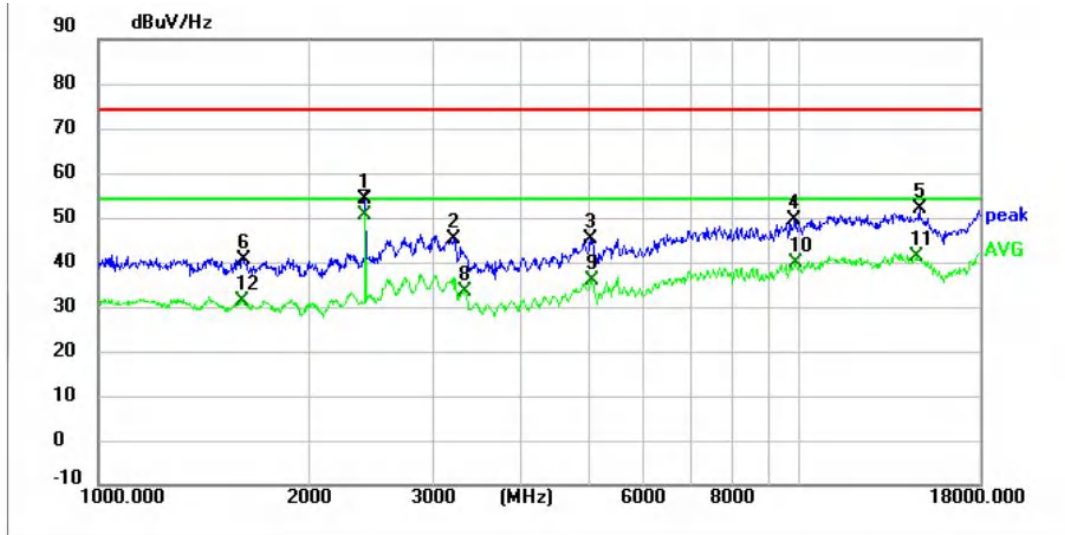
Pass

#### 5.2.8.4. Test Data

##### For 1 GHz ~ 18 GHz

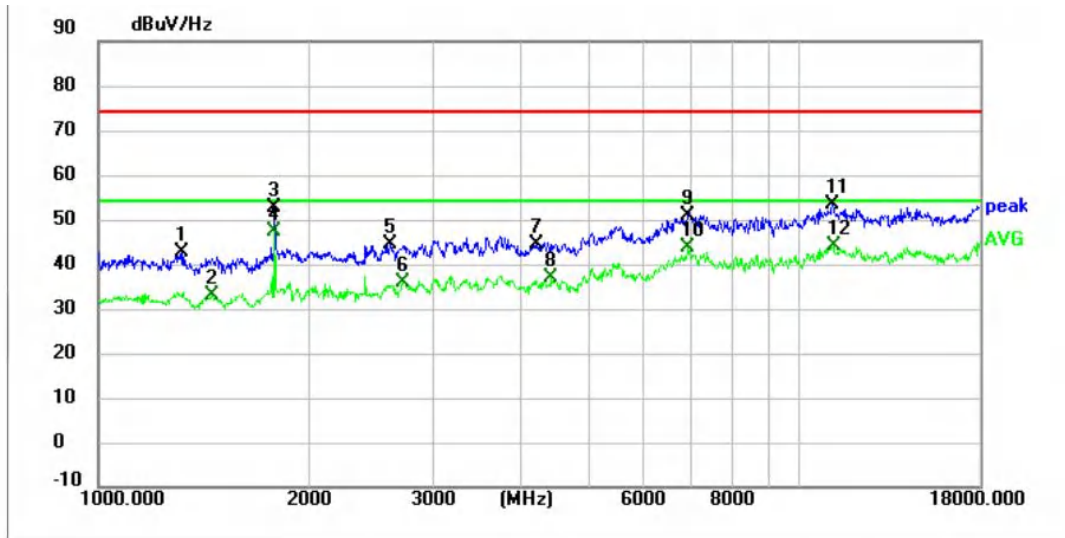
Have pre-scan all test mode, found TM1 mode which it was worst case, so only show the worst case's data on this report.

Mode1 / Polarization: Horizontal / CH: L



No.	Frequency (MHz)	Reading (dBuV)	Factor (dB)	Level (dBuV/Hz)	Limit (dBuV/Hz)	Margin (dB)	Detector
1	2404.2000	51.77	2.38	54.15	74.00	19.85	peak
2	3215.1000	38.46	6.59	45.05	74.00	28.95	peak
3	5029.0000	32.35	12.75	45.10	74.00	28.90	peak
4	9836.6000	24.37	25.18	49.55	74.00	24.45	peak
5	14804.0000	62.70	-10.68	52.02	74.00	21.98	peak
6	1613.7000	41.67	-1.20	40.47	74.00	33.53	peak
7 *	2404.2000	48.10	2.38	50.48	54.00	3.52	AVG
8	3330.7000	26.81	6.43	33.24	54.00	20.76	AVG
9	5056.2000	22.77	13.03	35.80	54.00	18.20	AVG
10	9850.2000	14.74	25.16	39.90	54.00	14.10	AVG
11	14662.9000	51.92	-10.63	41.29	54.00	12.71	AVG
12	1605.2000	32.62	-1.21	31.41	54.00	22.59	AVG

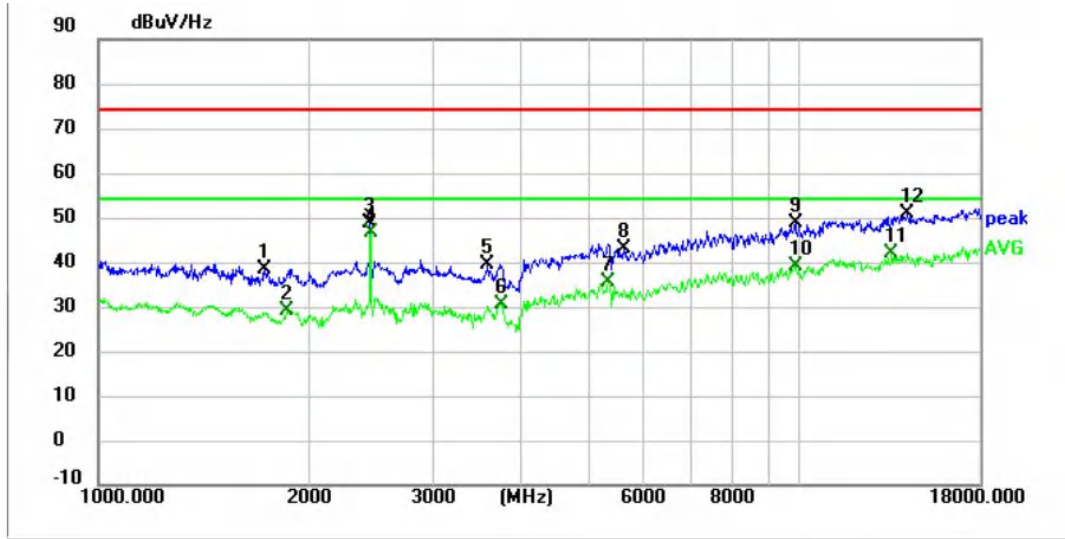
Mode1 / Polarization: Vertical / CH: L



No.	Frequency (MHz)	Reading (dBuV)	Factor (dB)	Level (dBuV/Hz)	Limit (dBuV/Hz)	Margin (dB)	Detector
1	1316.2000	44.35	-1.62	42.73	74.00	31.27	peak
2	1455.6000	34.52	-1.32	33.20	54.00	20.80	AVG
3	1785.4000	52.89	-0.27	52.62	74.00	21.38	peak
4 *	1785.4000	47.55	-0.27	47.28	54.00	6.72	AVG
5	2616.7000	40.48	4.16	44.64	74.00	29.36	peak
6	2717.0000	31.16	4.64	35.80	54.00	18.20	AVG
7	4206.2000	36.49	7.92	44.41	74.00	29.59	peak
8	4428.9000	28.04	8.78	36.82	54.00	17.18	AVG
9	6934.7000	30.17	20.86	51.03	74.00	22.97	peak
10	6934.7000	22.79	20.86	43.65	54.00	10.35	AVG
11	11133.7000	25.26	28.09	53.35	74.00	20.65	peak
12	11152.4000	16.13	28.12	44.25	54.00	9.75	AVG



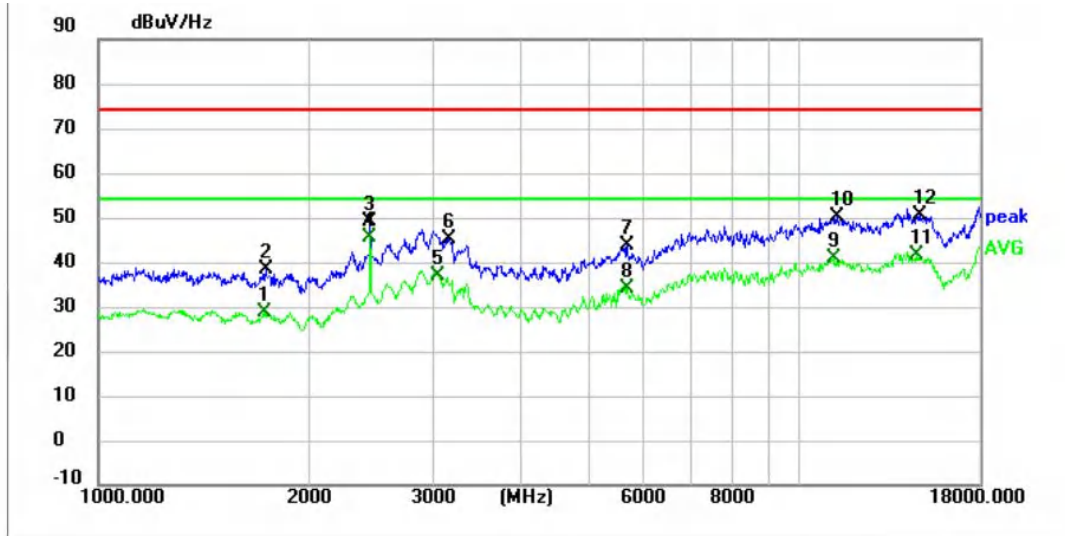
Mode1 / Polarization: Horizontal / CH: M



No.	Frequency (MHz)	Reading (dBuV)	Factor (dB)	Level (dBuV/Hz)	Limit (dBuV/Hz)	Margin (dB)	Detector
1	1724.2000	38.99	-0.71	38.28	74.00	35.72	peak
2	1860.2000	29.35	-0.16	29.19	54.00	24.81	AVG
3	2441.6000	46.24	2.39	48.63	74.00	25.37	peak
4 *	2443.3000	44.08	2.39	46.47	54.00	7.53	AVG
5	3590.8000	33.04	6.34	39.38	74.00	34.62	peak
6	3760.8000	23.90	6.80	30.70	54.00	23.30	AVG
7	5338.4000	22.03	13.61	35.64	54.00	18.36	AVG
8	5629.1000	28.24	14.83	43.07	74.00	30.93	peak
9	9843.4000	23.45	25.17	48.62	74.00	25.38	peak
10	9843.4000	14.03	25.17	39.20	54.00	14.80	AVG
11	13493.3000	53.31	-11.50	41.81	54.00	12.19	AVG
12	14212.4000	61.25	-10.53	50.72	74.00	23.28	peak

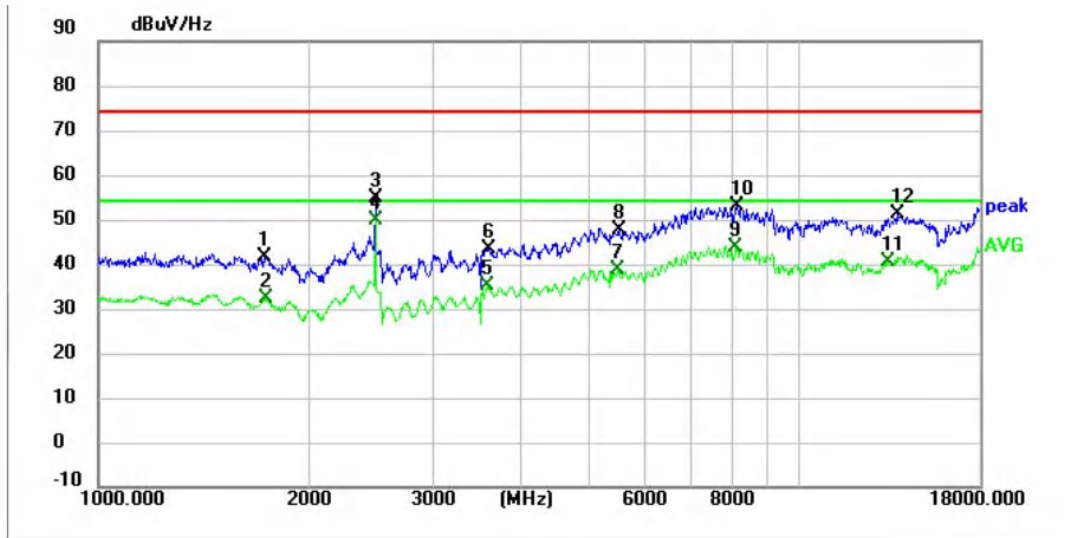


Mode1 / Polarization: Vertical / CH: M



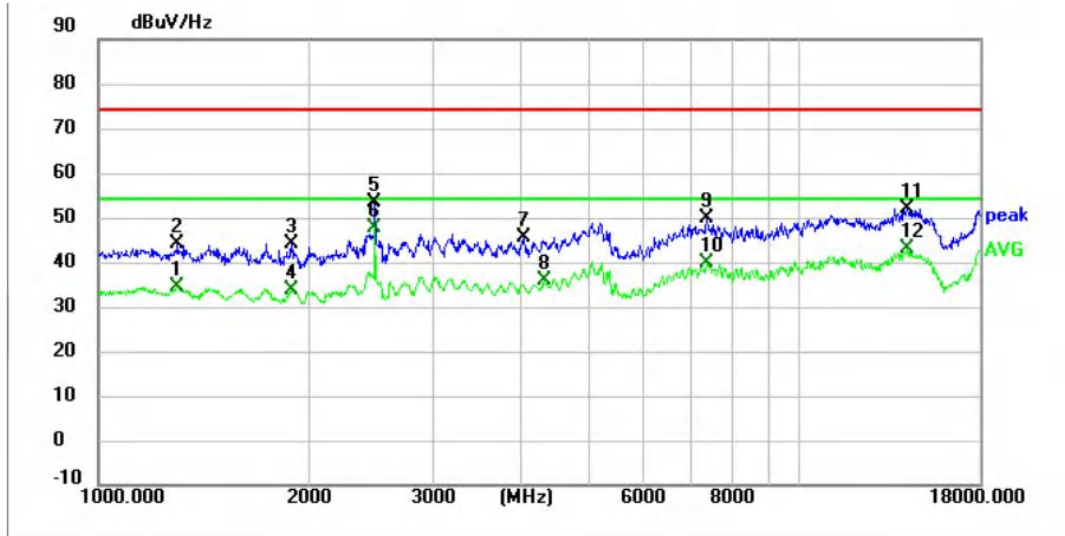
No.	Frequency (MHz)	Reading (dBuV)	Factor (dB)	Level (dBuV/Hz)	Limit (dBuV/Hz)	Margin (dB)	Detector
1	1724.2000	29.33	-0.71	28.62	54.00	25.38	AVG
2	1734.4000	39.11	-0.63	38.48	74.00	35.52	peak
3	2441.6000	46.62	2.39	49.01	74.00	24.99	peak
4 *	2441.6000	43.19	2.39	45.58	54.00	8.42	AVG
5	3057.0000	30.80	6.12	36.92	54.00	17.08	AVG
6	3167.5000	38.66	6.43	45.09	74.00	28.91	peak
7	5675.0000	28.55	15.04	43.59	74.00	30.41	peak
8	5683.5000	18.86	15.08	33.94	54.00	20.06	AVG
9	11142.2000	12.63	28.11	40.74	54.00	13.26	AVG
10	11271.4000	22.14	28.16	50.30	74.00	23.70	peak
11	14647.6000	52.07	-10.61	41.46	54.00	12.54	AVG
12	14797.2000	61.31	-10.68	50.63	74.00	23.37	peak

Mode1 / Polarization: Horizontal / CH: H



No.	Frequency (MHz)	Reading (dBuV)	Factor (dB)	Level (dBuV/Hz)	Limit (dBuV/Hz)	Margin (dB)	Detector
1	1727.7620	42.39	-0.69	41.70	74.00	32.30	peak
2	1732.7681	33.00	-0.65	32.35	54.00	21.65	AVG
3	2480.5621	52.04	2.64	54.68	74.00	19.32	peak
4 *	2480.5621	47.15	2.64	49.79	54.00	4.21	AVG
5	3582.0306	28.79	6.33	35.12	54.00	18.88	AVG
6	3592.4094	37.09	6.34	43.43	74.00	30.57	peak
7	5496.6184	23.87	14.81	38.68	54.00	15.32	AVG
8	5512.5447	32.96	14.86	47.82	74.00	26.18	peak
9	8099.7290	20.82	22.81	43.63	54.00	10.37	AVG
10	8123.1976	30.43	22.63	53.06	74.00	20.94	peak
11	13361.3400	52.20	-11.55	40.65	54.00	13.35	AVG
12	13793.4160	62.36	-11.17	51.19	74.00	22.81	peak

Mode1 / Polarization: Vertical / CH: H



No.	Frequency (MHz)	Reading (dBuV)	Factor (dB)	Level (dBuV/Hz)	Limit (dBuV/Hz)	Margin (dB)	Detector
1	1294.1000	36.05	-1.61	34.44	54.00	19.56	AVG
2	1299.2000	45.89	-1.61	44.28	74.00	29.72	peak
3	1892.5000	44.18	-0.06	44.12	74.00	29.88	peak
4	1892.5000	33.91	-0.06	33.85	54.00	20.15	AVG
5	2482.4000	50.61	2.66	53.27	74.00	20.73	peak
6 *	2482.4000	44.94	2.66	47.60	54.00	6.40	AVG
7	4032.8000	38.34	7.30	45.64	74.00	28.36	peak
8	4326.9000	27.72	8.03	35.75	54.00	18.25	AVG
9	7363.1000	27.68	22.13	49.81	74.00	24.19	peak
10	7386.9000	17.78	22.12	39.90	54.00	14.10	AVG
11	14171.6000	62.60	-10.58	52.02	74.00	21.98	peak
12	14224.3000	53.49	-10.54	42.95	54.00	11.05	AVG

Note:

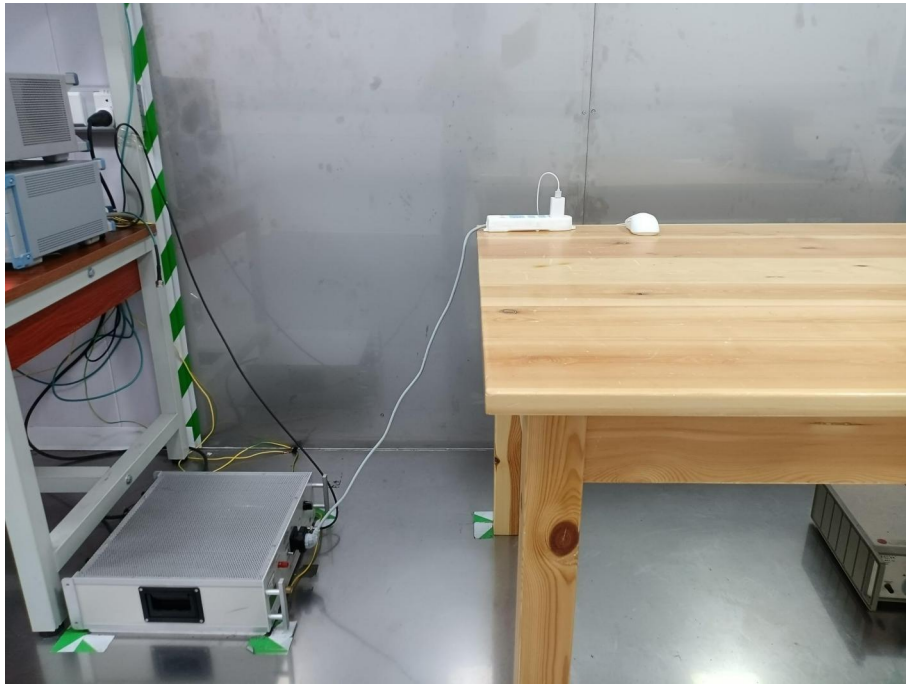
1) Level= Reading + Factor; Factor =Antenna Factor+ Cable Loss- Preamp Factor

2) Margin = Limit – Level

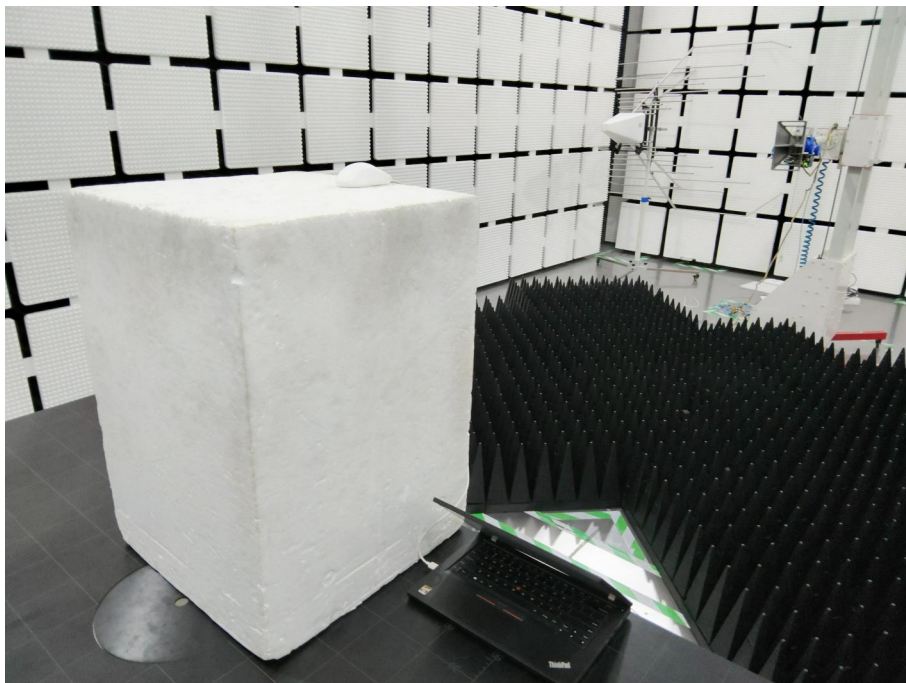
3) Average measurement was not performed if peak level is lower than average limit (54dBuV/m) for above 1GHz.

## 6. TEST SETUP PHOTOS

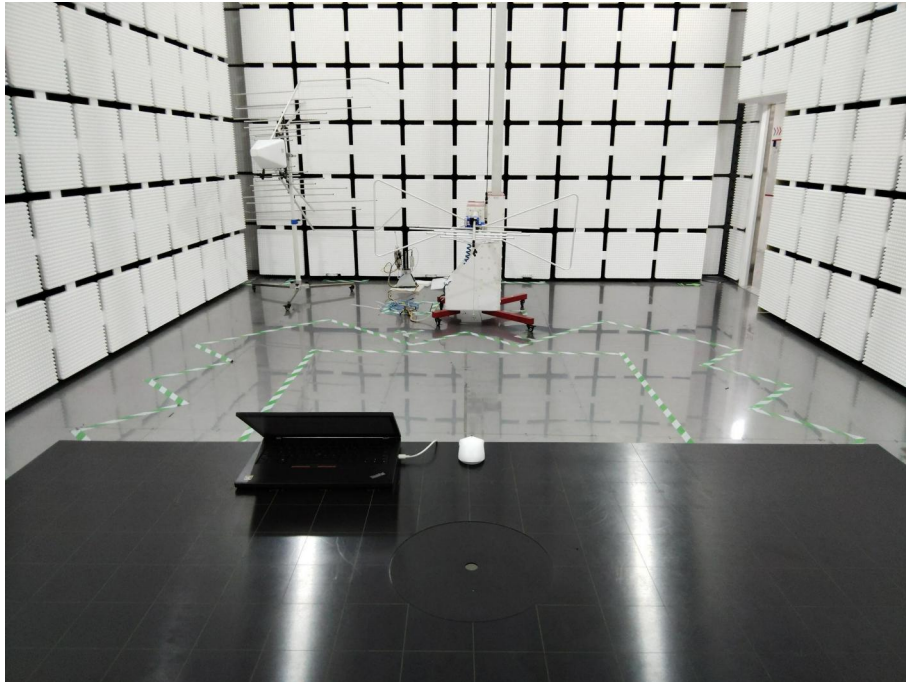
Conducted Emission at AC power line



Radiated band edge emission  
Radiated Spurious Emission (Above 1GHz)



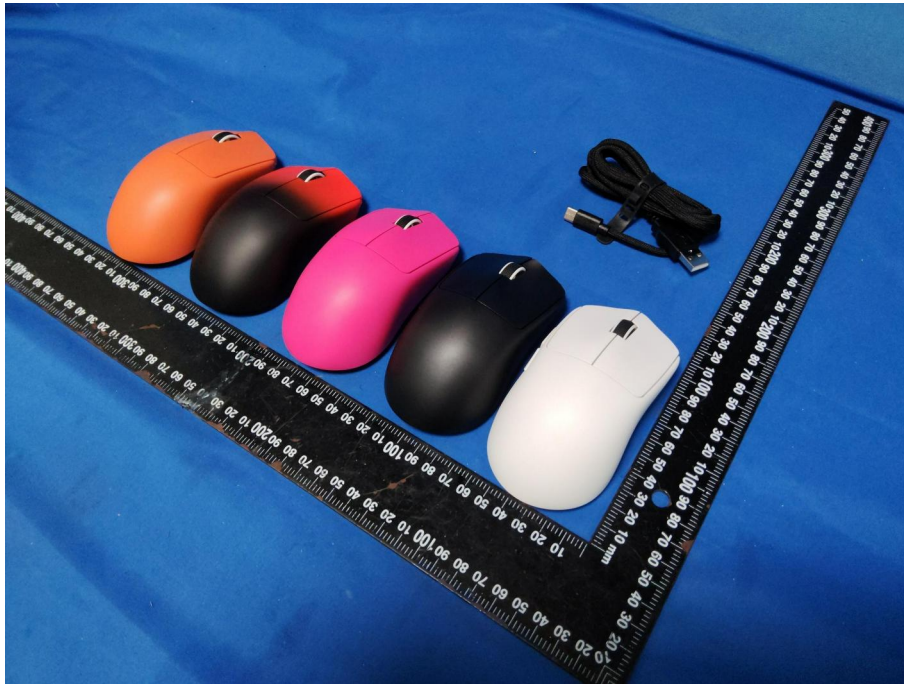
Radiated Spurious Emission (below 1GHz)





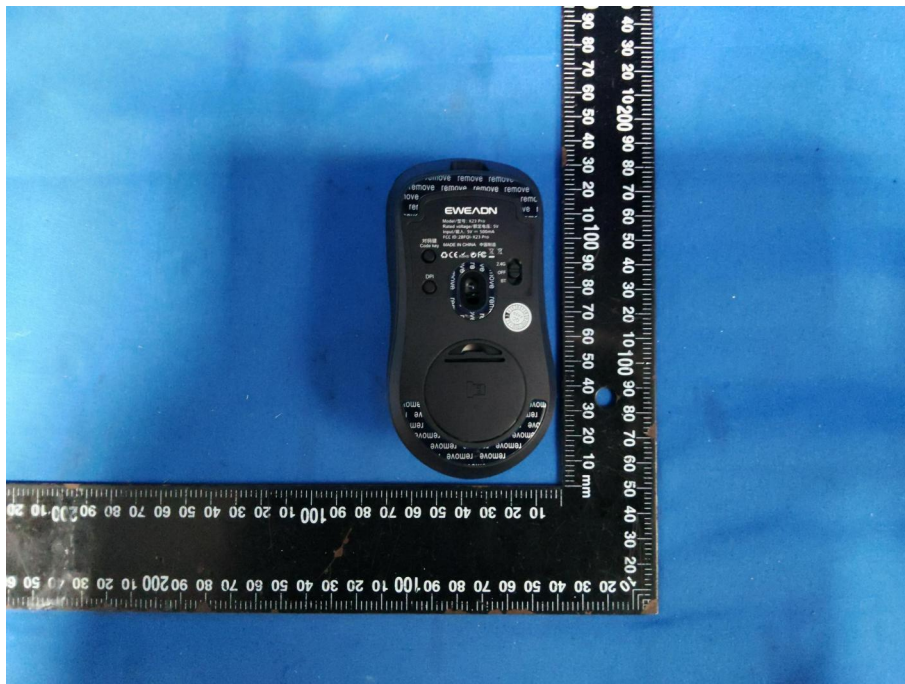
## 7. EXTERNAL AND INTERNAL PHOTOS

### 7.1. External Photos







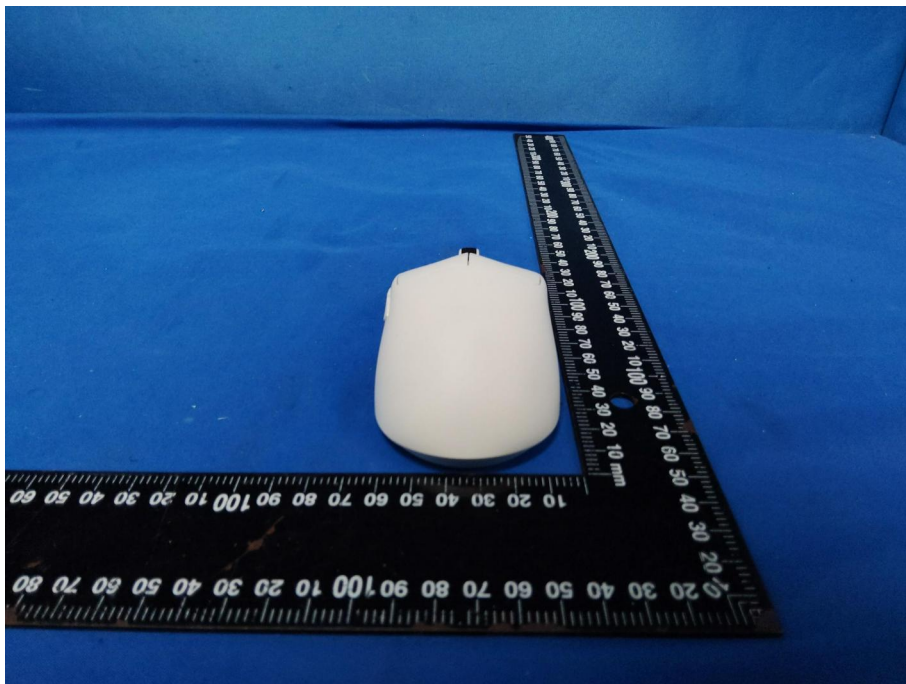
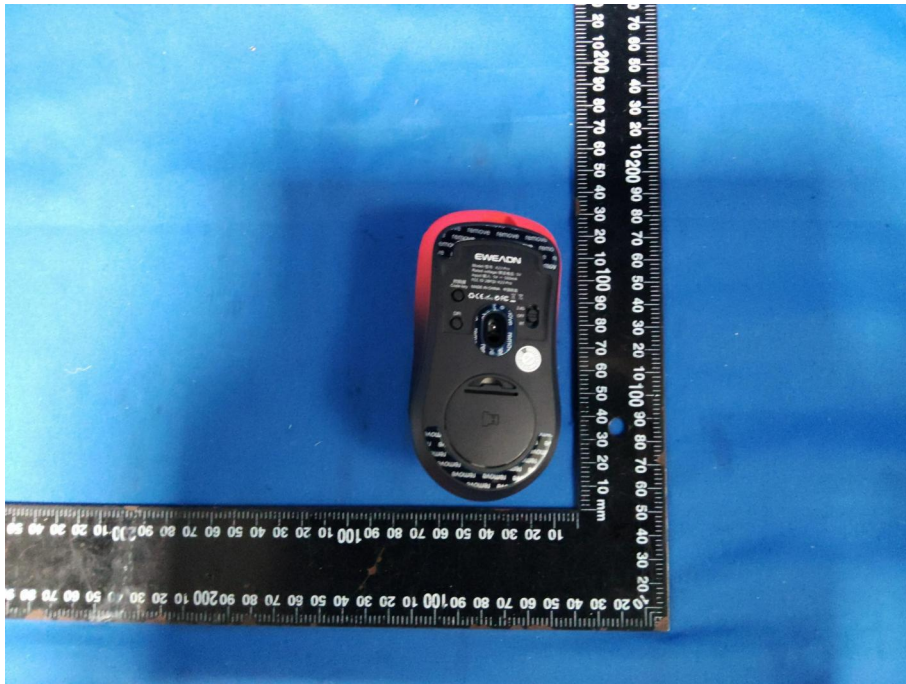


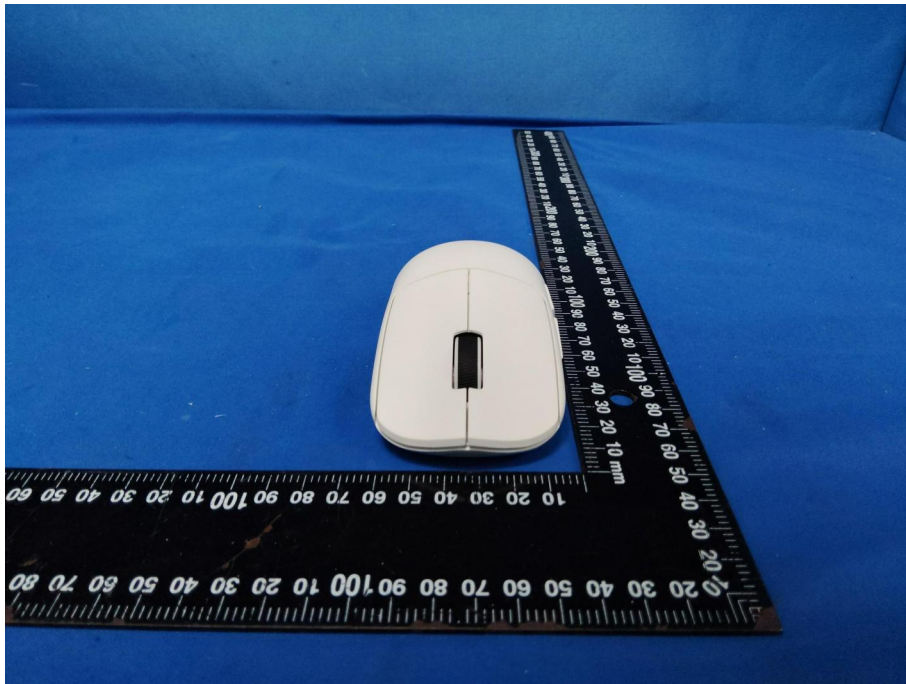
















## 7.2. Internal Photos

