

COLORS

Green: PANTONE 2239 C

Dark blue 1: PANTONE 295 C

Dark blue 2: PANTONE 296 C

Gray: PANTONE Cool Gray 6 C



bond
touch

One for you

FCC ID: 2ANQ2BOND001
Model: Bond001

This device complies with Part 15 of the FCC Rules. Operation is subject to the following two conditions:
(1) this device may not cause harmful interference, and
(2) this device must accept any interference received, including interference that may cause undesired operation.

Bond Touch Inc.
622 Santa Cruz Ave, Suite B
Menlo Park, CA 94025 USA

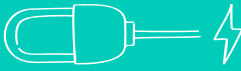



Bond Touch app is available for iOS and Android devices.


One for me


Getting started is easy!

- ① Charge your bracelet using the supplied charger. Plug it into your computer or use a power adapter (not included).


- ② Download the "**Bond Touch**" app from the App Store or Google Play. You can also download the apps at: **bond-touch.com/quickstart**


- ③ Turn on Bluetooth on your mobile and follow the steps in the app to connect to your bracelet.

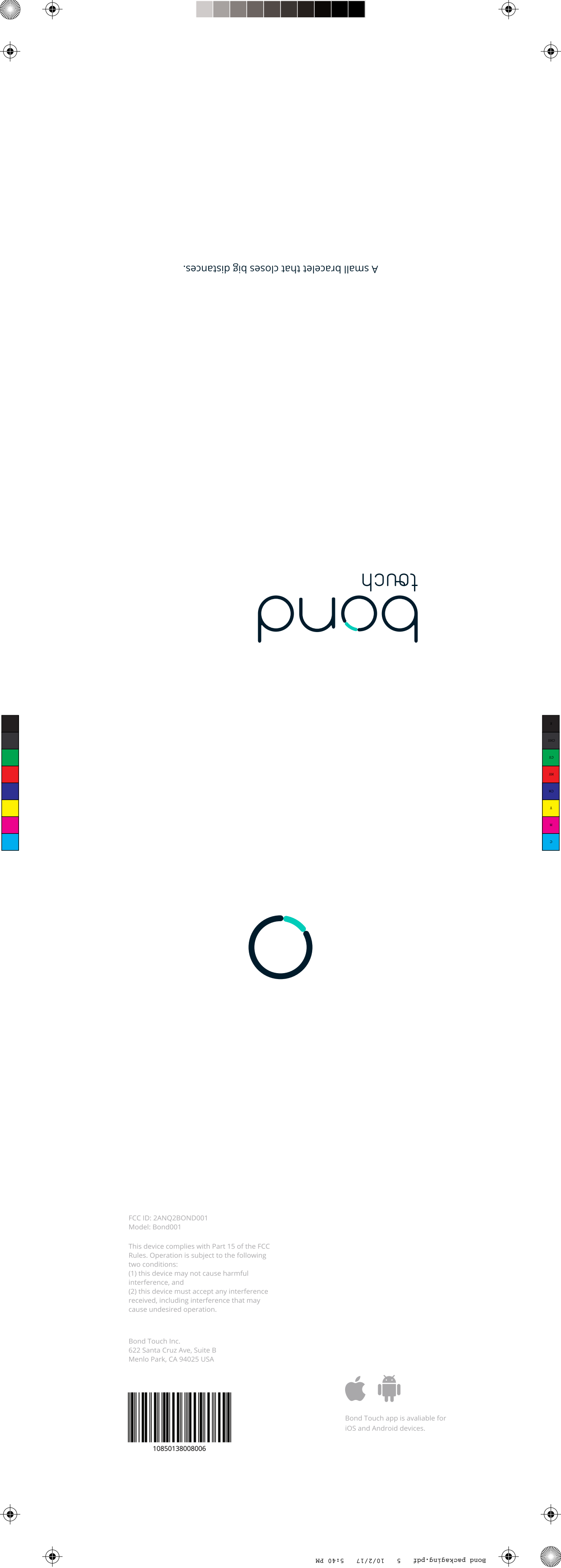

- ④ Add your partner and start bonding!



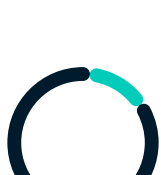
For bracelet assembly and more, go to
bond-touch.com/quickstart







A small bracelet that closes big distances.



FCC ID: 2ANQ2BOND001
Model: Bond001

This device complies with Part 15 of the FCC Rules. Operation is subject to the following two conditions:
(1) this device may not cause harmful interference, and
(2) this device must accept any interference received, including interference that may cause undesired operation.

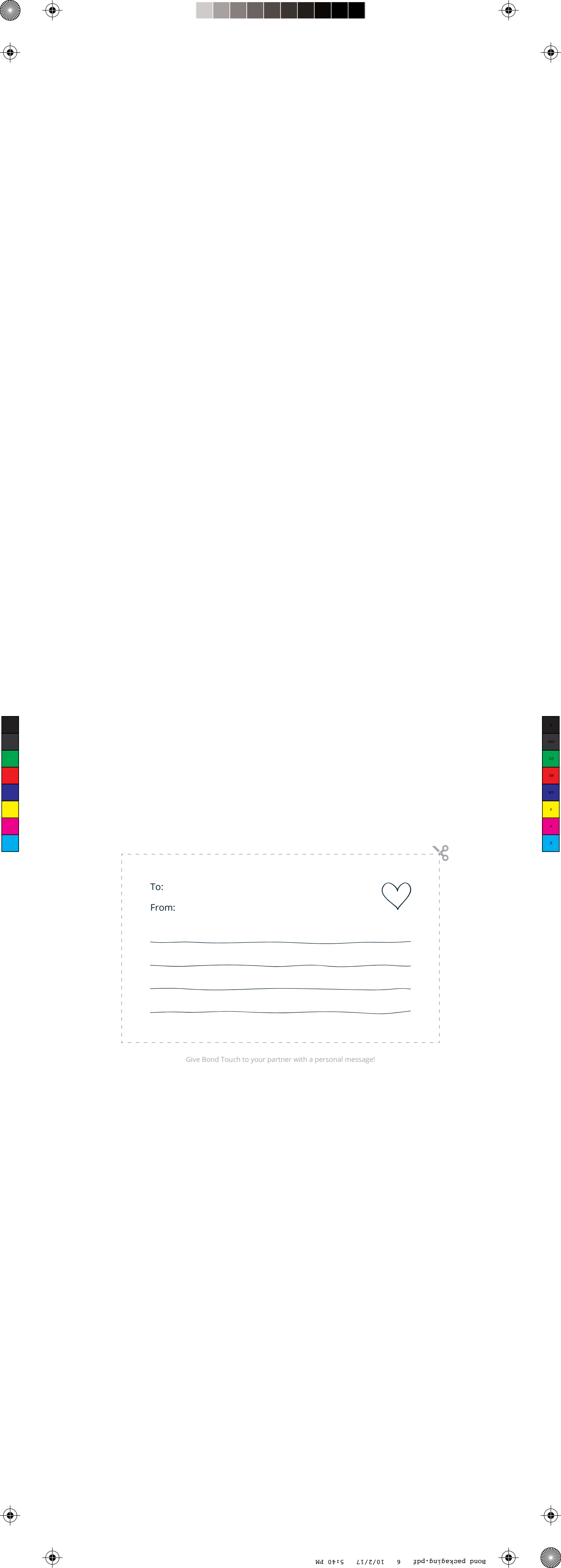
Bond Touch Inc.
622 Santa Cruz Ave, Suite B
Menlo Park, CA 94025 USA



10850138008006

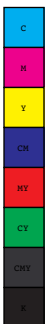


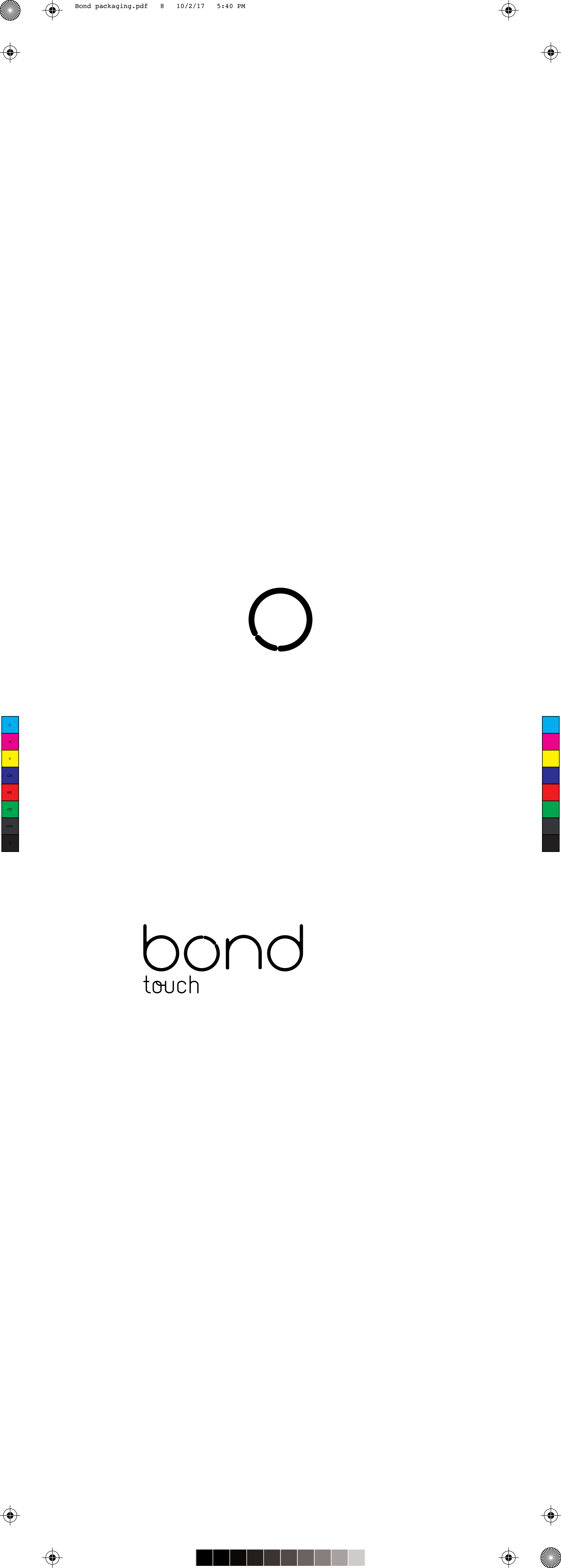
Bond Touch app is available for
iOS and Android devices.





bond
touch





bond

touch



Important Safety Information

WARNING: The batteries installed shall not be exposed to excessive heat such as sunshine, fire or the like.

CAUTION: Danger of explosion if battery is incorrectly replaced. Replace only with the same or equivalent type.

CORRECT DISPOSAL OF THIS PRODUCT: This marking indicates that this product should not be disposed with other household wastes throughout the EU. To prevent possible harm to the environment or human health from uncontrolled waste disposal, recycle it responsibly to promote the sustainable reuse of material resources. To return your used device, please use the return and collection systems or contact the retailer where the product was purchased. They can take this product for environmental safe recycling. No naked flame sources, such as lighted candles, should be placed on the apparatus.

Attention should be drawn to environmental aspects of battery disposal. The product is designed to use in moderate climates operating temperature.

Manufactured for: Bond Touch Inc.
622 Santa Cruz Ave, Ste B, Menlo Park, CA 94025

For terms of use and warranty information connect to
bond-touch.com/warranty

Model: Bond001.

Made in China

FFC ID: 2ANQ2BOND001

Serial number: Bond001

Product name: Bond Touch

This device complies with Part 15 of the FCC Rules. Operation is subject to the following two conditions:

- (1) this device may not cause harmful interference, and
- (2) this device must accept any interference received, including interference that may cause undesired operation.