

KTC 设计稿、样稿确认

康冠商用科技有限公司

(相同样稿以最新承认日期为准)

物料名称: F2308119 Prowise 65/75/86/98W65B-A2 快速安装指南
申请编号: F2308119 版 本: 1
品 牌: Prowise 语 言: 多国语言
机 型: 65/75/86/98W65B-A2
客户型号: PW.1.17065.0003/PW.1.17075.0003/PW.1.17086.0003/PW.1.17098.0003
方 案: A311D2 XF.A311D2.T
底 座: /

成品尺寸: 148mm*210mm 页 数: 20P
装订方式: 骑马订 装订方向: 左侧
封面颜色: 四色 内页颜色: 单黑
封面材质: 157g铜版纸 内页材质: 80g双胶纸
封面处理: 过哑膜 单 / 双面: 双面
环保要求: 符合ROHS&REACH

备 注: 供应商一旦接单, 默认大货和样品完全符合文件备注和测试要求, 如果达不到要求请拒接此单;
二维码、料号不印刷

— 此页不印刷 —

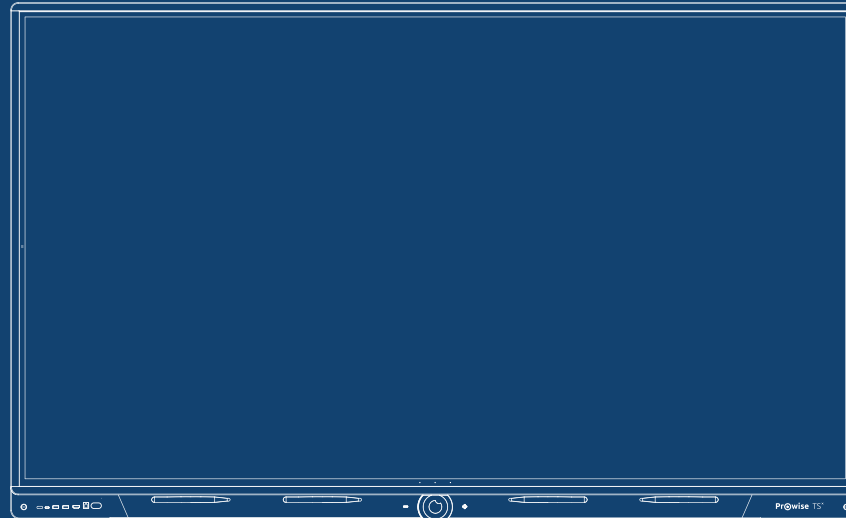
(This page will not be printed)

EN

DE

FR

NL



Quick Start Guide

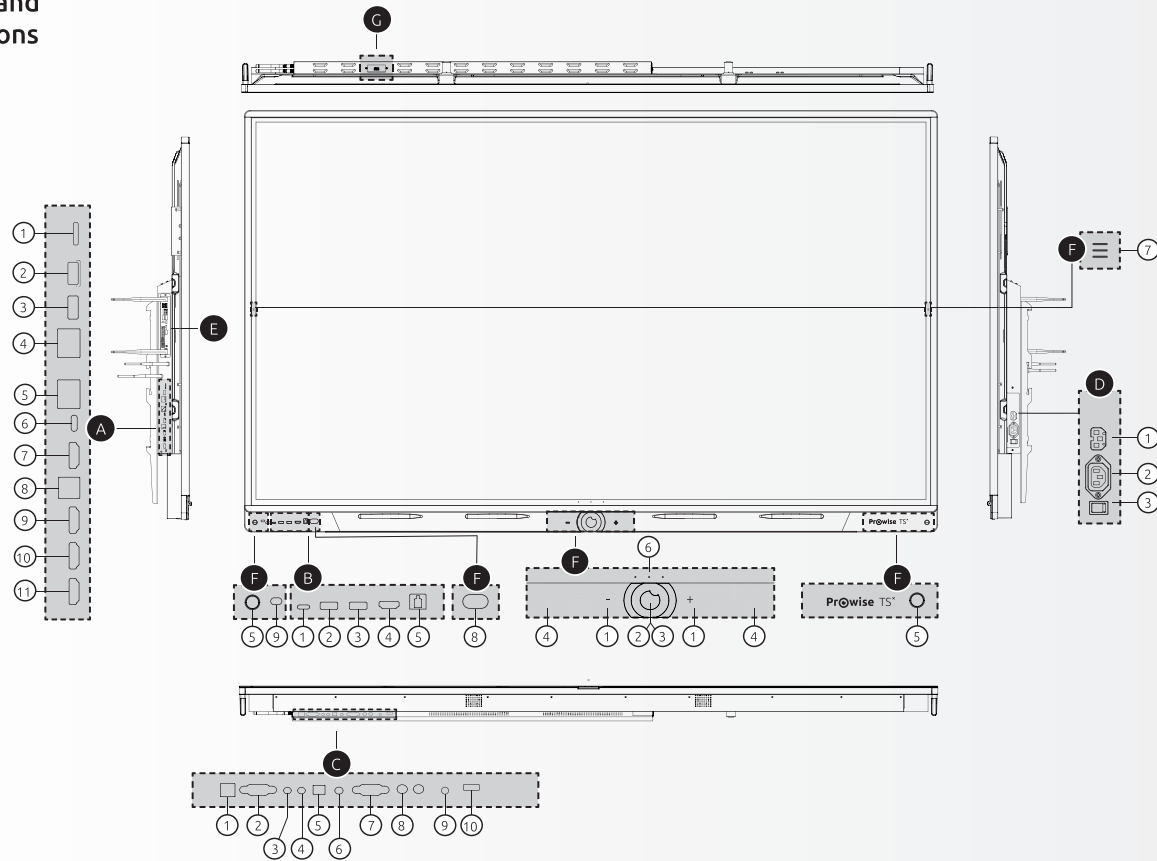
Prowise Touchscreen Ten G3

PW.1.17065.0003 / PW.1.17075.0003 / PW.1.17086.0003 / PW.1.17098.0003

Prowise



Buttons and connections



A Ports left side

- 1 SD card reader
- 2 USB 3.2 Gen1 Type A
- 3 USB 3.2 Gen1 Type A
- 4 LAN-IN port (RJ45)
- 5 LAN-OUT port (RJ45)
- 6 USB Type C
(Video+ Audio + 100W power + Touch + LAN)
- 7 HDMI Output 2.1
- 8 USB 3.2 Gen 1 Type-B (Touch Port for HDMI)
- 9 HDMI 2.1 Type A (HDCP2.3, ARC & CEC)
- 10 HDMI 2.1 Type A (HDCP2.3 CEC)
- 11 HDMI 2.1 Type A (HDCP2.3 CEC)

B Ports front

- 1 USB Type C (Video+Audio+15W power+Touch)
- 2 USB 3.2 Gen1 Type A
- 3 USB 3.2 Gen1 Type A
- 4 HDMI 2.1 Type A (HDCP 2.3)
- 5 USB 3.2 Type B (Touch Port)

C Ports bottom

- 1 USB 3.2 Gen 1 Type-B (Touch Port for VGA)
- 2 VGA input (1920x1080p @60Hz)
- 3 VGA Audio input
- 4 AV video input (567i)
- 5 S/PDIF Optical Digital Audio port
- 6 Audio port - Headphones

- 7 RS232 Serial Port
- 8 Analog Audio port RCA (L+R)
- 9 Microphone in
- 10 USB 2.0 Type A (Central)

D AC input and Main switch right

- 1 AC input
- 2 AC output
- 3 Main switch

E OPS slot left side

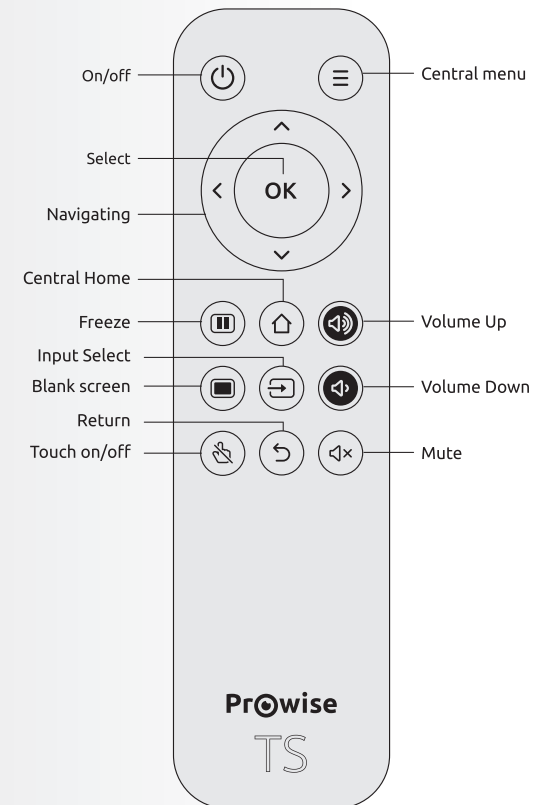
F Buttons and sensors front

- 1 Volume + / volume -
- 2 Home button
- 3 NFC sensor
- 4 Microphones
- 5 Proximity sensors
- 6 Adjustable buttons
- 7 Menu buttons
- 8 IR sensor
- 9 Light sensor

G Ports top

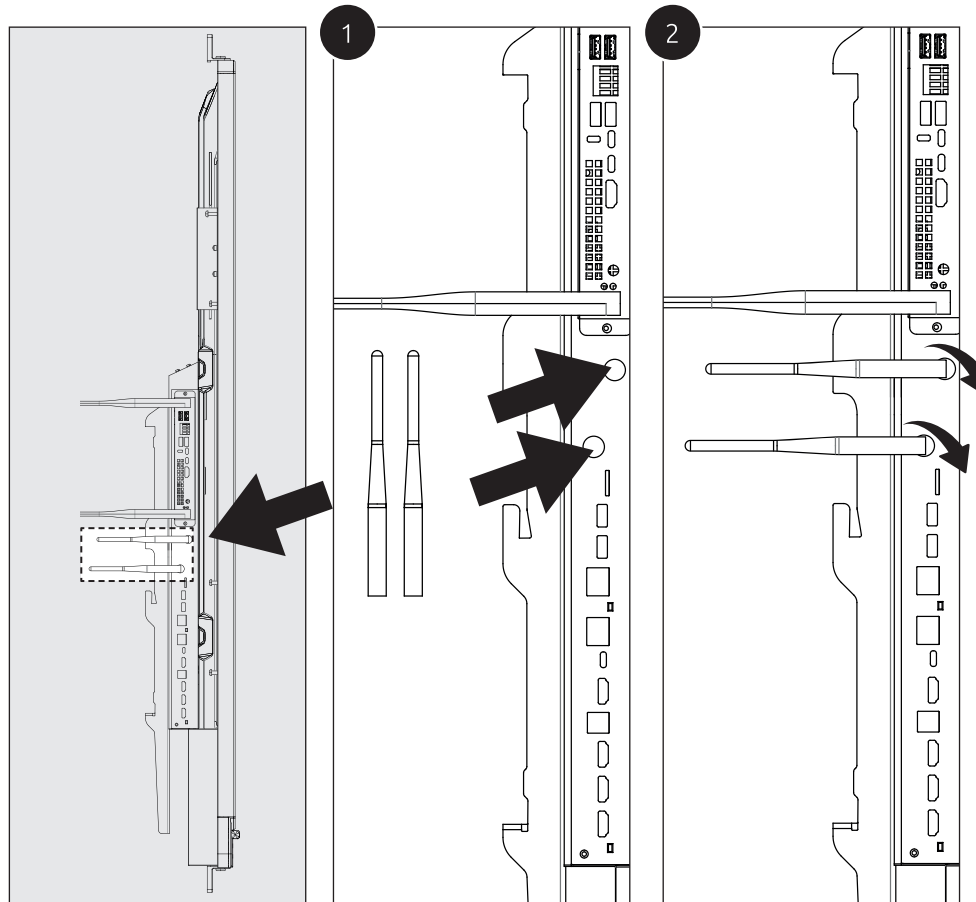
- 1 USB 3.2 Gen 1 Type A (Camera)

Remote control



02	EN
06	DE
10	FR
14	NL

Wi-Fi Antennas
installation procedure

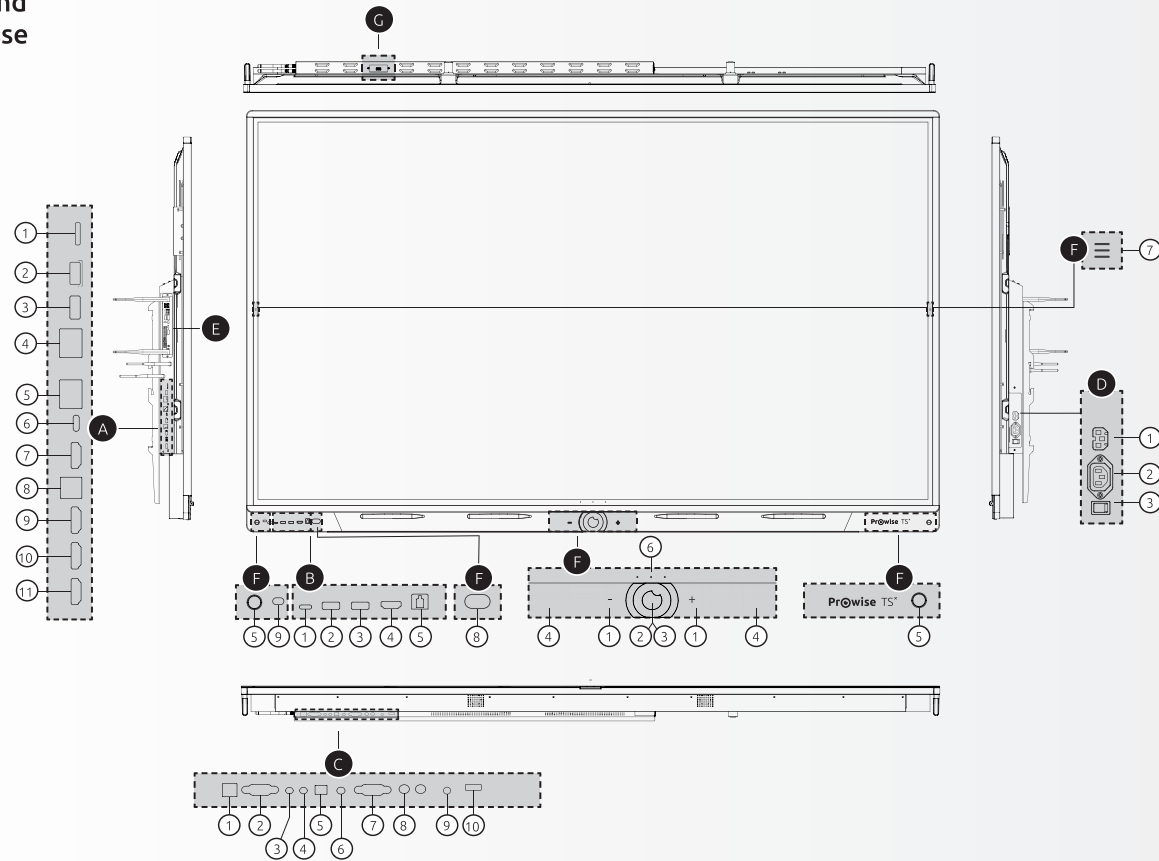




02	EN
06	DE
10	FR
14	NL



Tasten und Anschlüsse



A Ports linke Seite

- 1 SD-Kartenleser
- 2 USB 3.2 Gen1 Typ-A
- 3 USB 3.2 Gen1 Typ-A
- 4 LAN-EIN Port (RJ45)
- 5 LAN-AUS Port (RJ45)
- 6 USB Type C
(Video+ Audio + 100W power + Touch + LAN)
- 7 HDMI-Ausgang 2.1
- 8 USB 3.2 Gen1 Typ-B (Touch-Port für HDMI)
- 9 HDMI 2.1 Typ-A (HDCP2.3 CEC & ARC)
- 10 HDMI 2.1 Typ-A (HDCP2.3 CEC)
- 11 HDMI 2.1 Typ-A (HDCP2.3 CEC)

B Ports an der Vorderseite

- 1 USB Typ-C (Video+Audio+15 W Leistung+Touch)
- 2 USB 3.2 Gen1 Typ-A
- 3 USB 3.2 Gen1 Typ-A
- 4 HDMI 2.1 Type A (HDCP 2.3)
- 5 USB 3.2 Gen1 Typ-B (Touch-Port)

C Ports an der Unterseite

- 1 USB 3.2 Gen1 Typ-B (Touch-Port für VGA)
- 2 VGA-Eingang (1920 x 1080p @ 60 Hz)
- 3 PC Audio-Eingang
- 4 AV-Videoeingang (567i)
- 5 S/PDIF Optisch-Digitaler Audio-Ausgang
- 6 Audio-Ausgang - Kopfhörer

- 7 Serielle RS232-Schnittstelle
- 8 Analoger Audio-Ausgang RCA (L+R)
- 9 Mikrofon-Eingang
- 10 USB 2.0 Type A (Central)

D AC-Eingang und Hauptschalter rechts

- 1 AC-Ausgang
- 2 AC-Eingang
- 3 Hauptschalter

E OPS-Steckplatz linke Seite

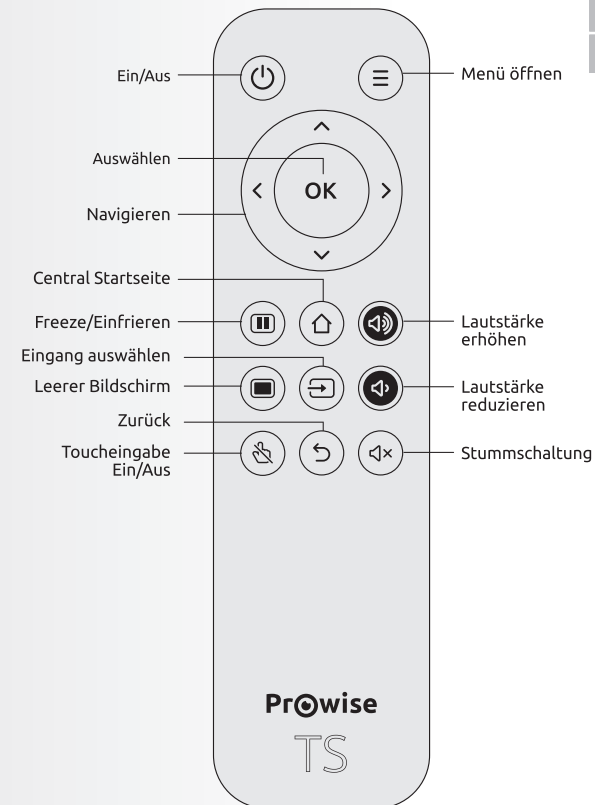
F Schaltflächen und Sensoren Vorderseite

- 1 Lautstärke + / Lautstärke -
- 2 Home-Taste
- 3 NFC-Sensor
- 4 Mikrofone
- 5 Näherungssensoren
- 6 Einstellbare Schaltflächen
- 7 Menütasten
- 8 IR-Sensor
- 9 Lichtsensor

G Ports an der Vorderseite

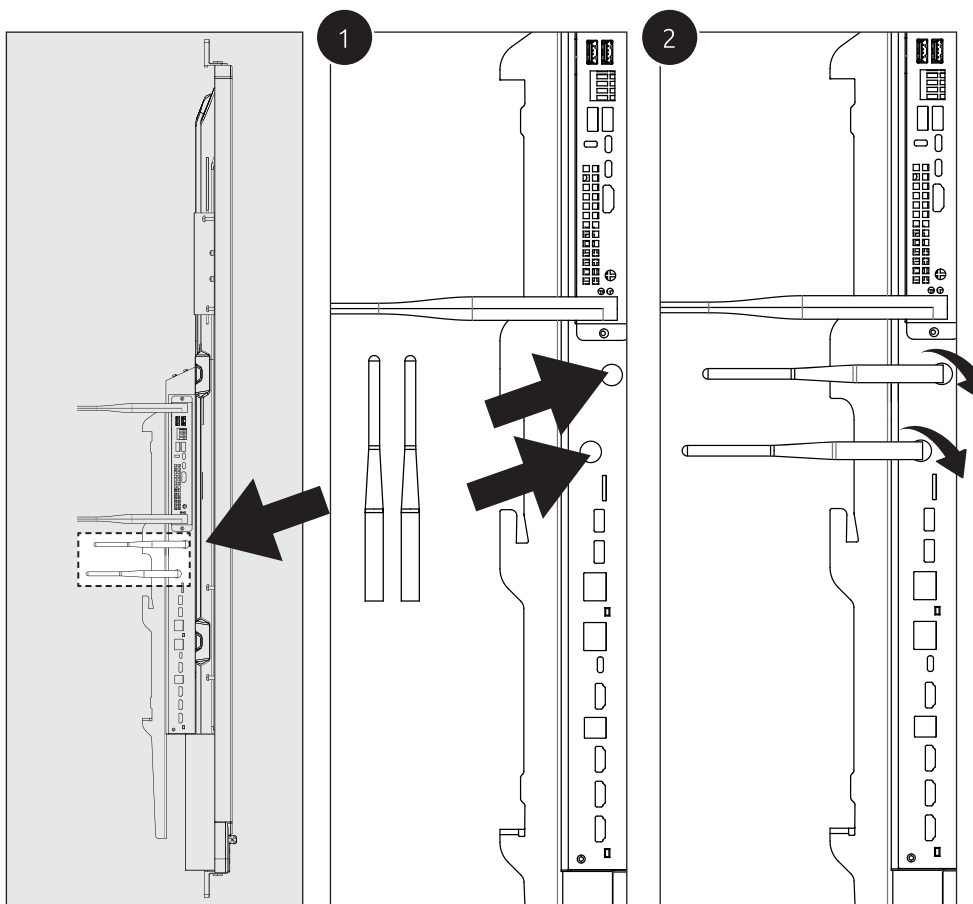
- 1 USB 3.2 Gen1 Typ-A (Kamera)

Fernbedienung



02	EN
06	DE
10	FR
14	NL

WLAN-Antennen Installationsverfahren

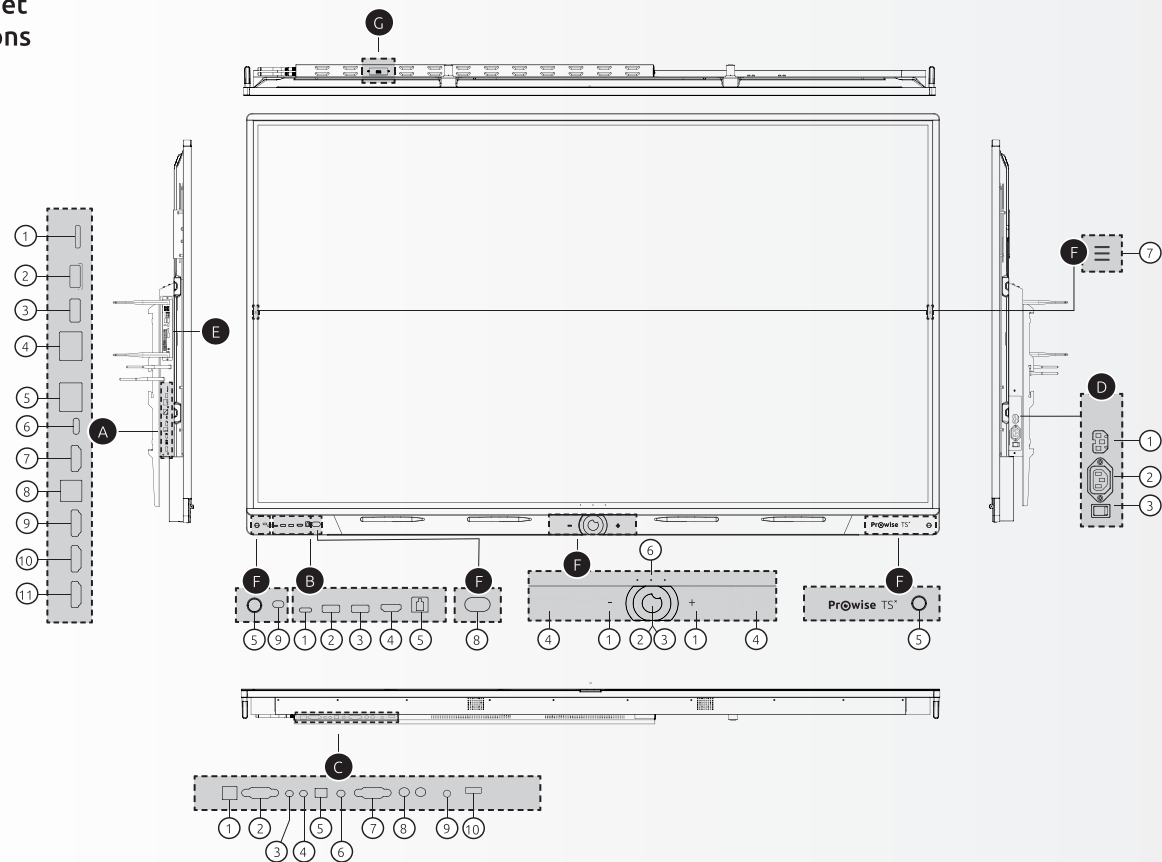




02	EN
06	DE
10	FR
14	NL



Boutons et connexions



A Ports côté gauche

- 1 Lecteur de carte SD
- 2 USB 3.2 Gen 1 Type A
- 3 USB 3.2 Gen 1 Type A
- 4 Port LAN-IN (RJ45)
- 5 Port LAN-OUT (RJ45)
- 6 USB Type C
(Video+ Audio + 100W power + Touch + LAN)
- 7 Sortie HDMI 2.1
- 8 USB 3.2 Gen 1 Type B (port Touch pour HDMI)
- 9 HDMI 2.1 Type A (HDCP2.3, ARC & CEC)
- 10 HDMI 2.1 Type A (HDCP2.3 CEC)
- 11 HDMI 2.1 Type A (HDCP2.3 CEC)

B Ports en façade

- 1 USB Type C (Vidéo+Audio+puissance 15 W+Touch)
- 2 USB 3.2 Gen 1 Type A
- 3 USB 3.2 Gen 1 Type A
- 4 HDMI 2.1 Type A (HDCP 2.3)
- 5 USB 3.2 Gen 1 Type B (port Touch)

C Ports côté inférieur

- 1 USB 3.2 Gen 1 Type B (port Touch pour VGA)
- 2 Entrée VGA (1920x1080p @60 Hz)
- 3 Entrée PC Audio
- 4 Entrée AV vidéo (567i)
- 5 Sortie audio numérique optique S/PDIF
- 6 Sortie audio – Casque

- 7 Port série RS232
- 8 Sortie audio analogique RCA (G+D)
- 9 Entrée microphone
- 10 USB 2.0 Type A (Central)

D Entrée CA et Commutateur principal à droite

- 1 Sortie CA
- 2 Entrée CA
- 3 Commutateur principal

E Emplacement OPS côté gauche

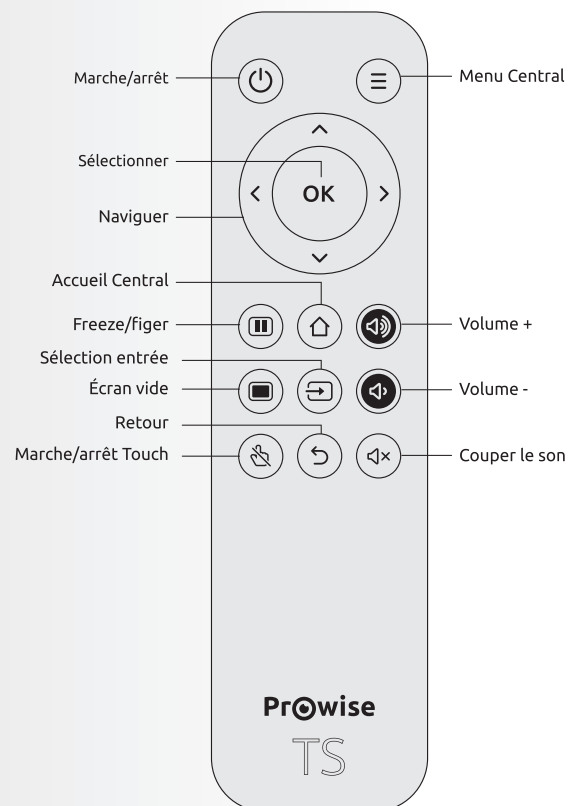
F Boutons et capteurs en façade

- 1 Volume - / volume +
- 2 Bouton Accueil
- 3 Capteur NFC
- 4 Microphones
- 5 Capteur de proximité
- 6 Boutons réglables
- 7 Boutons Menu
- 8 Capteur IR
- 9 Capteur de lumière

G Ports côté supérieur

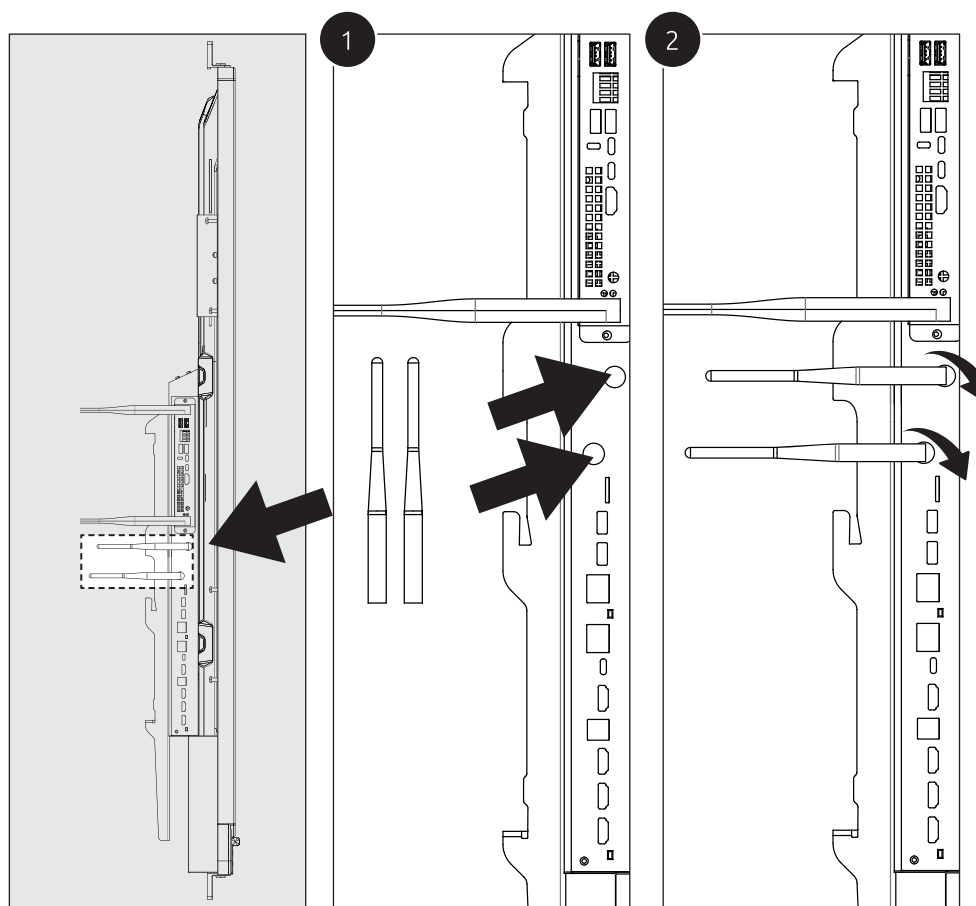
- 1 USB 3.2 Gen 1 Type A (Caméra)

Télécommande



02	EN
06	DE
10	FR
14	NL

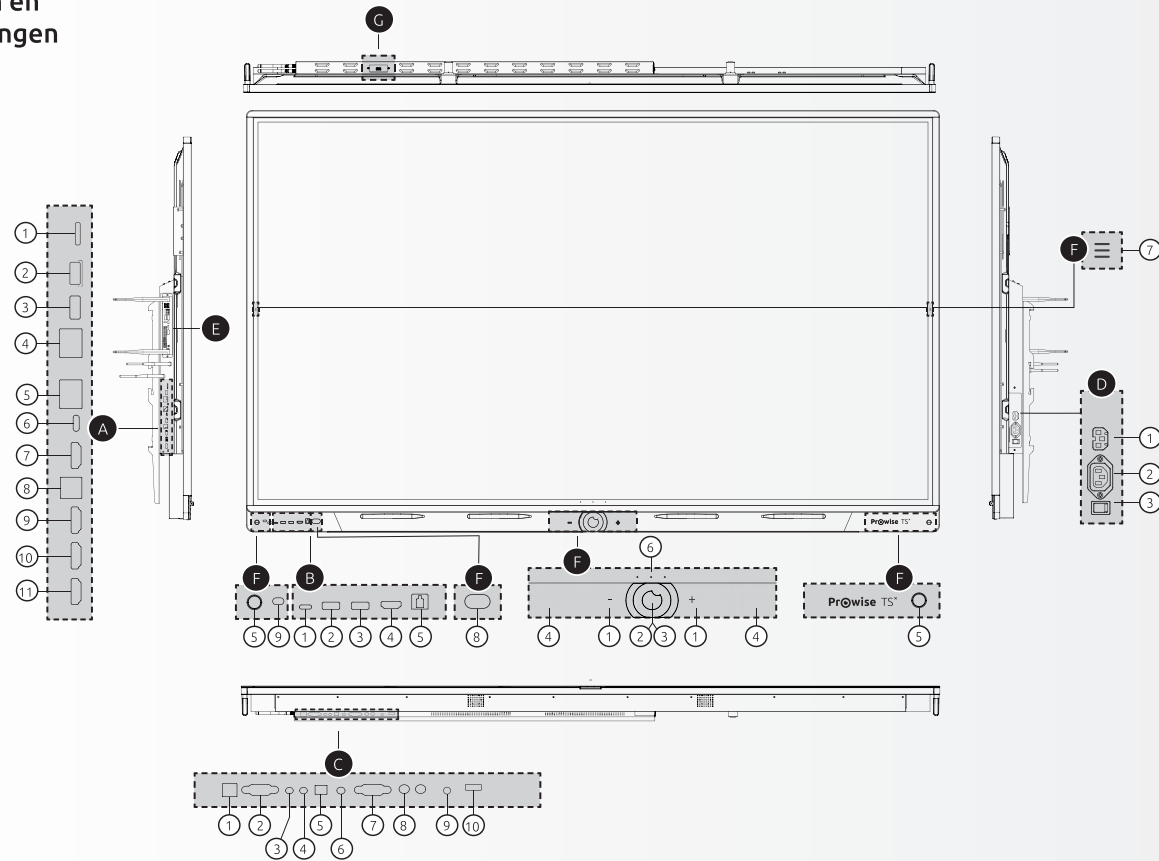
Procédure
d'installation
antennes Wi-Fi



02	EN
06	DE
10	FR
14	NL



Knoppen en aansluitingen



A Poorten linkerkzijde

- 1 SD-kaartlezer
- 2 USB 3.2 Gen1 Type A
- 3 USB 3.2 Gen 1 Type A
- 4 LAN-IN poort (RJ45)
- 5 LAN-UIT poort (RJ45)
- 6 USB Type C

(Video+ Audio + 100W power + Touch + LAN)

- 7 HDMI Output 2.1
- 8 USB 3.2 Gen 1 Type-B (Touch-poort voor HDMI)
- 9 HDMI 2.1 Type A (HDCP2.3, ARC & CEC)
- 10 HDMI 2.1 Type A (HDCP2.3 CEC)
- 11 HDMI 2.1 Type A (HDCP2.3 CEC)

B Poorten voorzijde

- 1 USB Type C (Video+Audio+15W stroom+Touch)
- 2 USB 3.2 Gen 1 Type A
- 3 USB 3.2 Gen 1 Type A
- 4 HDMI 2.1 Type A (HDCP 2.3)
- 5 USB 3.2 Gen 1 Type-B (Touch-poort)

C Poorten onderzijde

- 1 USB 3.2 Gen 1 Type-B (Touch-poort voor VGA)
- 2 VGA-invoer (1920x1080p @60Hz)
- 3 PC Audio-ingang
- 4 AV video-ingang (567i)
- 5 S/PDIF Optische Digitale Audio-uitgang
- 6 Audio-uitgang - Hoofdtelefoon

- 7 RS232 Seriéle Poort
- 8 Analoge Audio-uitgang RCA (L+R)
- 9 Microfoon in
- 10 USB 2.0 Type A (Central)

D AC-ingang en Hoofdschakelaar rechts

- 1 AC-uitgang
- 2 AC-ingang
- 3 Hoofdschakelaar

E OPS-sleuf linkerkzijde

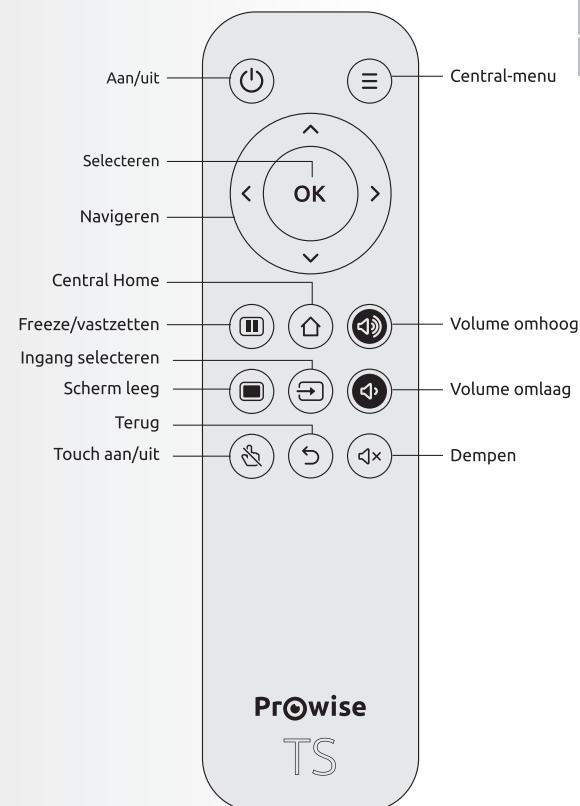
F Knoppen en sensoren voorzijde

- 1 Volume - / volume +
- 2 Home knop
- 3 NFC sensor
- 4 Microfoons
- 5 Nabijheidssensoren
- 6 Instelbare knoppen
- 7 Menu knoppen
- 8 IR sensor
- 9 Lichtsensor

G Poorten bovenzijde

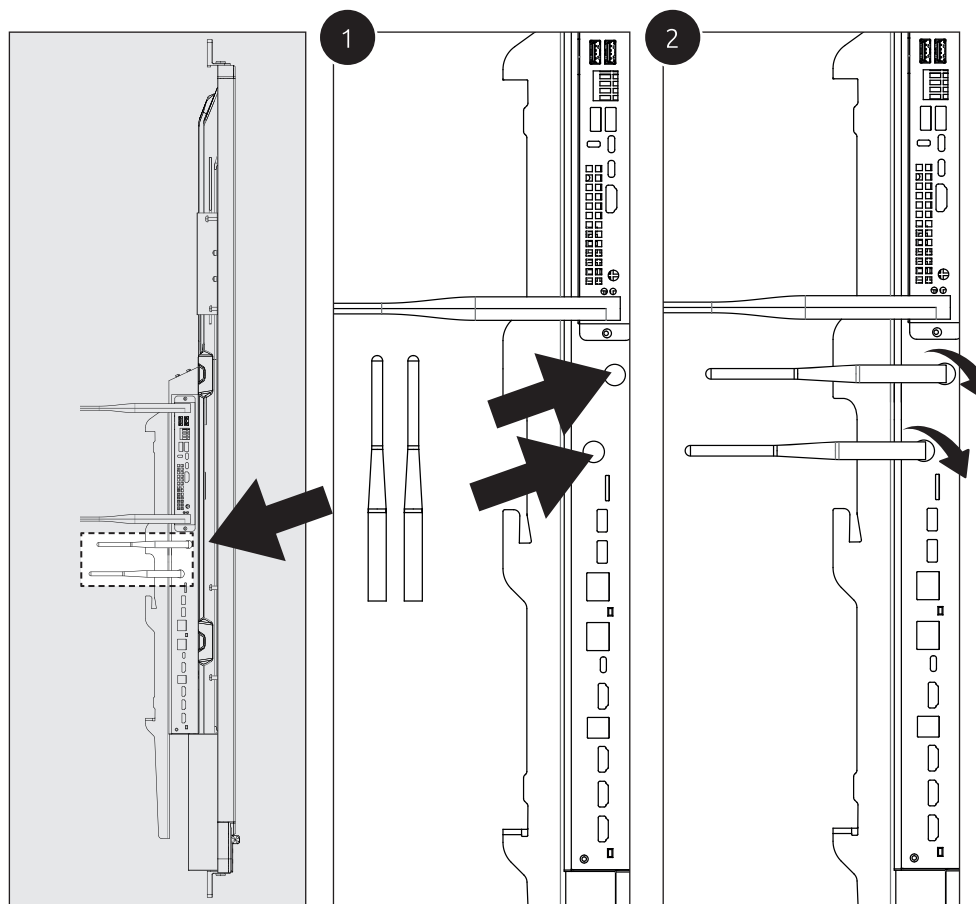
- 1 USB 3.2 Gen 1 Type A (Camera)

Afstandsbediening



02	EN
06	DE
10	FR
14	NL

Wi-Fi Antennes installatieprocedure



02	EN
06	DE
10	FR
14	NL



Let education speak

Pr@wise

www.prowise.com