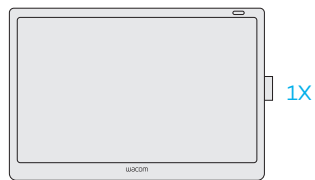
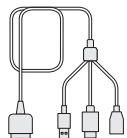


wacom®

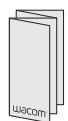
Cintiq



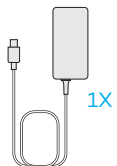
1X



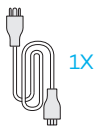
1X



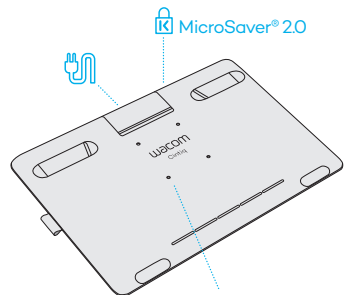
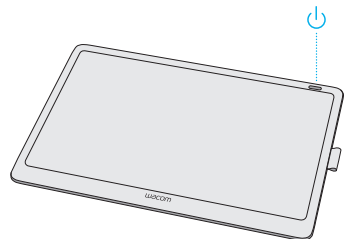
1X



1X

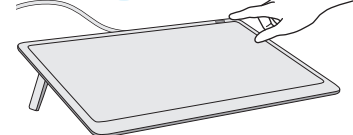
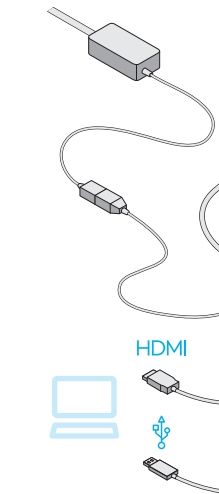
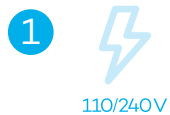


1X



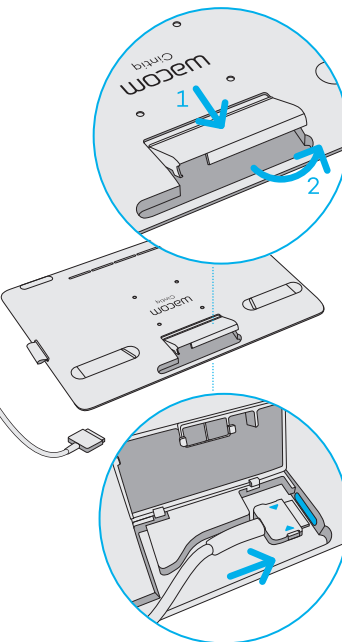
1

2



3

4



EN Download the driver at wacom.com/start. Then register your product to access all Wacom services.

Laden Sie den Treiber unter wacom.com/start herunter.

DE Registrieren Sie danach Ihr Produkt, um Zugang zu allen Services von Wacom zu erhalten.

Download het stuurprogramma op wacom.com/start.

NL Registreer je product vervolgens om toegang te krijgen tot alle diensten van Wacom.

Ladda ner drivrutinen på wacom.com/start.

SV Registrera sedan produkten för att komma åt alla tjänster från Wacom.

Download drivern på wacom.com/start.

DA Registrer herefter dit produkt for at få adgang til alle Wacoms tjenester.

FR Téléchargez le pilote sur wacom.com/start. Inscrivez ensuite votre produit pour accéder à tous les services Wacom.

Scarichi il driver su wacom.com/start.

IT Quindi registri il prodotto per accedere a tutti i servizi Wacom.

Descargue el controlador en wacom.com/start. A continuación, registre su producto para acceder a todos los servicios de Wacom.

JP wacom.com/startから「Wacom Cintiq」を選び、タブレットドライバをダウンロードしてください。製品登録を行っていただく各種サービスが受けられます。

ES wacom.com/start 에서 드라이버를 다운로드하십시오.

KR 그런 다음 제품을 등록하시면 Wacom 서비스 전체에 액세스하실 수 있습니다.

TC 在 wacom.com/start 下載驅動程式。然後註冊產品以獲取全部 Wacom 服務。

PT Baixe o driver em wacom.com/start. Depois registre seu produto, para acessar todos os serviços Wacom.

RU Скачайте драйвер на wacom.com/start. Затем зарегистрируйте свой продукт для получения доступа ко всем сервисам Wacom.

Pobierz sterownik ze strony internetowej wacom.com/start.

PL Następnie zarejestruj swój produkt, aby uzyskać dostęp do wszystkich usług Wacom.

Stáhněte si ovladač na wacom.com/start.

CS Pak zaregistrujte svůj výrobek, abyste získali přístup ke všem službám Wacom.

BG Изтеглете драйвера от wacom.com/start. След това регистрирайте своя продукт, за да получите достъп до всички услуги на Wacom.

Lataa ajuri alas osoitteesta wacom.com/start.

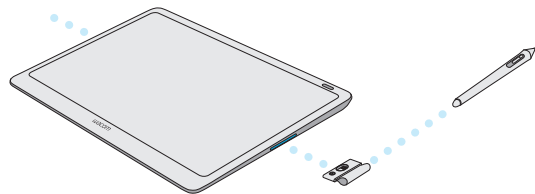
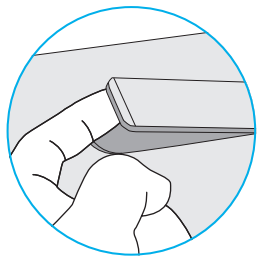
FI Rekisteröi sitten tuotteesi päästäksesi käsiksi kaikkiin Wacom-palveluihin.

wacom.com/start adresinden sürücüyü indirin.

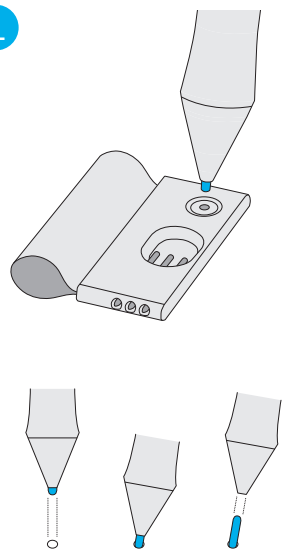
TR Daha sonra, tüm Wacom servislerine erişmek için ürününüzü kaydedin.

在 wacom.com/start 下載驱动程序。

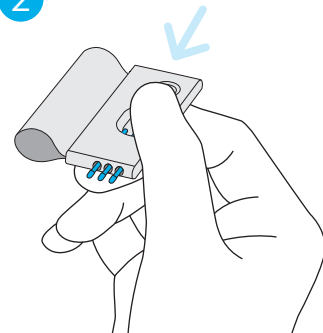
然后注册产品以获取全部 Wacom 服务。



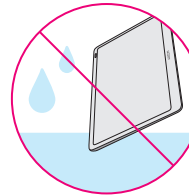
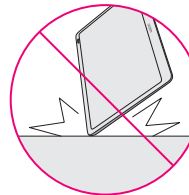
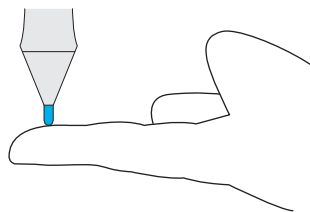
1



2



3



 wacom.com/manuals

©2019 Wacom Co., Ltd. All rights reserved.
Wacom, Cintiq and their respective logos
are trademarks and/or registered trademarks
of Wacom Co., Ltd.

©2019 Wacom Co., Ltd. Tous droits réservés.
Wacom, Cintiq et leurs logos correspondants
sont des marques commerciales et/ou
dépôtées de Wacom Co., Ltd.

Printed in China | PRN-B195(A)



wacom®
Cintiq

Wacom®

Cintiq

DTK-1660 / DTK-1661

EN:

REGULATORY STATEMENT

FCC NOTICE

This device complies with Part 15 of the FCC Rules. Operation is subject to the following two conditions: (1) this device may not cause harmful interference, and (2) this device must accept any interference received, including interference that may cause undesired operation.

This equipment has been tested and found to comply with the limits for a Class B digital device, pursuant to Part 15 of FCC Rules. These limits are designed to provide reasonable protection against harmful interference in a residential installation.

This equipment generates, uses and can radiate radio frequency energy and, if not installed and used in accordance with the instructions, may cause harmful interference to radio communications.

However, there is no guarantee that interference will not occur in a particular installation.

You can determine whether the equipment is causing interference by disconnecting it from your computer. If the interference stops, it was probably caused by the equipment.

If the equipment does cause interference to radio or television reception, you may be able to correct the interference by using one or more of the following measures:

- Rotate the television or radio antenna until the interference stops.
- Move the equipment farther away from the television or radio.
- Plug the equipment and computer into an outlet that is on a different circuit from the television or radio.

If necessary, consult your Wacom dealer or an experienced radio/television technician for help. Changes or modifications to this product not authorized by Wacom could void the FCC Certification and negate your authority to operate the product.

FCC Radiation Exposure Statement:

This equipment complies with FCC radiation exposure limits set forth for an uncontrolled environment and meets the FCC radio frequency

(RF) Exposure Guidelines. This equipment has very low levels of RF energy that are deemed to comply without testing of specific absorption ratio (SAR).

INDUSTRY CANADA

CAN ICES-3 (B)/NMB-3(B)

Canada (IC) notice


This device complies with Industry Canada's licence-exempt RSSs. Operation is subject to the following two conditions:

- (1) This device may not cause interference; and
- (2) This device must accept any interference, including interference that may cause undesired operation of the device.

Radiation Exposure Statement:

The product complies with the Canada portable RF exposure limit set forth for an uncontrolled environment and are safe for intended operation as described in this manual. The further RF exposure reduction can be achieved if the product can be kept as far as possible from the user body or set the device to lower output power if such function is available.

EU CONFORMITY INFORMATION

 Hereby, Wacom declares that this product is in compliance with RE Directive, ErP Directive and RoHS Directive.

The full text of the EU declaration of conformity is available at the following internet address: www.wacom.eu/certificates


Frequency Band: 667 kHz
Maximum Radio-Frequency Power Transmitted: less than 15 dBµA/m

ENVIRONMENTAL COMPLIANCE

E-Waste

Wacom Technology, as a manufacturer of electronic products, is subject to and fully compliant with eWaste legislation in various states. For more information on the collection sites and statewide eWaste recycling programs in the United States, please visit <http://www.wacom.com/eWaste> or call 1-800-922-6613.

Waste Electrical and Electronic Equipment (WEEE) Directive

 In the European Union, this label icon indicates that this product should not be disposed of with the household waste. Wacom products are subject to this directive and therefore you should always collect them separately and bring them to the appropriate electronic waste collection point in your community

or region to enable recovery and recycling. Please refer to your community information on how to recycle electronic waste responsibly in your region.

For India

E-Waste

Wacom products are in conformity with the requirements of the reduction of hazardous substances of the E-waste Rule 2016.

The content of hazardous substances with the exemption of the applications listed in SCHEDULE III of the E-waste Rules:


- Not over 0.1% by weight in homogenous materials for Lead, Mercury, Hexavalent Chromium, Polybrominated biphenyls, Polybrominated diphenyl ethers
- Not over 0.01% by weight in homogenous materials for Cadmium

For the proper recycling and disposal of this product after its end of life, please visit our website. Toll free number and e-mail address are also available on this website. <https://www.wacom.com/en-in/e-waste>

Do's:

- ✓ Always look for information on the catalogue with our product for end-of-life equipment handling.
- ✓ Ensure that only Authorized Recyclers/Dismantler repair and handle your electronic products.
- ✓ Always call Nearest Wacom collection Point to Dispose products that have reached end-of-life.
- ✓ Always drop your used electronic products, batteries or any accessories when they reach the end of their life at your nearest Wacom collection Point.
- ✓ Wherever possible or as instructed, separate the packaging material according to responsible waste disposal options and sorting for recycling.
- ✓ Always ensure any glass surface is protected against breakage.

Don'ts:

- ✗ Do not dismantle your electronic Products on your own.
- ✗ Do not throw electronics in bins having "Do not Dispose" sign.
- 
- ✗ Do not give e-waste to informal and unorganized sectors like Local Scrap Dealer/Rag Pickers.
- ✗ Do not dispose your product in garbage bins along with municipal waste that ultimately reaches landfills.


How to dispose a product

Carry your end of life product to the nearest collection Point listed on below website. <https://www.wacom.com/en-in/e-waste/e-waste-drop-locations>

DE:

RECHTLICHE HINWEISE

EU-KONFORMITÄTSINFORMATION


 Wacom erklärt hiermit, dass dieses Produkt den Anforderungen der RE-Richtlinie, der ErP-Richtlinie und der RoHS-Richtlinie entspricht.

Der vollständige Text der EU-Konformitätserklärung ist unter folgender Adresse verfügbar: www.wacom.eu/certificates

Frequenzband: 667 kHz
Maximale Sendeleistung: weniger als 15 dBµA/m

EINHALTUNG VON UMWELTSTANDARDS

EU-Richtlinie über Elektro- und Elektronik-Altgeräte (WEEE)

 In der Europäischen Union zeigt dieses Symbol an, dass dieses Produkt nicht mit dem Hausmüll entsorgt werden soll. Für Wacom-Produkte gilt diese Richtlinie. Daher sollten diese Produkte stets getrennt gesammelt werden und zu den entsprechenden elektronischen Abfallsammlungen in Ihrer Region oder Gemeinde zwecks Weiterverarbeitung und Recycling gebracht werden. Bitte wenden Sie sich zum Thema Recycling elektronischer Abfälle in Ihrer Region an Ihre Gemeinde.

NL:

WETTELIJKE VERKLARING

EU-KONFORMITEITSINFORMATIE

 Hierbij verklaart Wacom dat dit product voldoet aan de RE-Richtlijn, de ErP-Richtlijn en de RoHS-Richtlijn. De volledige tekst van de EU-conformiteitsverklaring is beschikbaar via het volgende internetadres: www.wacom.eu/certificates

Frequentieband: 667 kHz
Maximale zendkracht radiofrequentie: minder dan 15 dBµA/m

MILIEURICHTLIJN

Richtlijn Afval van Elektrische en Elektronische Apparatuur (AEEA)

 In de Europese Unie geeft dit label aan dat dit product niet met het huishoudelijk afval mag worden weggegooid. Wacom-producten vallen onder de bepalingen van deze richtlijn en dienen apart naar het desbetreffende verzamelpunt voor opslag en recycling van elektronisch afval bij u in de buurt te worden gebracht. Raadpleeg de informatie voor uw buurt over hoe u elektronisch afval in uw regio op een verantwoorde manier recycleert.

FR:

DÉCLARATIONS DE CONFORMITÉ


INDUSTRIE CANADA
(CANADA QUÉBEC)
CAN ICES-3 (B)/NMB-3(B)

Le présent appareil est conforme aux CNR d'Industrie Canada applicables aux appareils radio exempts de licence.

L'exploitation est autorisée aux deux conditions suivantes:
1) L'appareil ne doit pas produire de brouillage;
2) L'utilisateur de l'appareil doit accepter tout brouillage radioélectrique subi, même si le brouillage est susceptible d'en compromettre le fonctionnement.

Déclaration d'exposition aux radiations:
Le produit est conforme aux limites d'exposition pour les appareils portables RF pour les Etats-Unis et le Canada établies pour un environnement non contrôlé. Le produit est sûr pour un fonctionnement tel que décrit dans ce manuel. La réduction aux expositions RF peut être augmentée si l'appareil peut être conservé aussi loin que possible du corps de l'utilisateur ou que le dispositif est réglé sur la puissance de sortie la plus faible si une telle fonction est disponible.


INFORMATIONS DE CONFORMITÉ UE

 Par la présente, Wacom déclare que ce produit est conforme à la directive RE, à la directive ErP et à la directive RoHS. Le texte intégral de la déclaration de conformité UE est disponible à l'adresse suivante: www.wacom.eu/certificates

Bande de fréquences : 667 kHz
Puissance maximale transmise par radiofréquence : moins de 15 dBµA/m

CONFORMITÉ AVEC LES NORMES ENVIRONNEMENTALES

Directive sur les déchets d'équipements électriques et électroniques (DEEE)


 Au sein de l'Union européenne, cette étiquette indique que le produit ne doit pas être jeté avec les déchets ménagers. Les produits Wacom sont soumis à cette

Directive et doivent donc être mis au rebut séparément, dans un point de collecte pour les appareils électroniques de votre région, afin d'être récupéré et recyclé. Reportez-vous à la réglementation locale de votre pays en matière de recyclage des déchets d'équipements électroniques.

IT:

DICHIARAZIONE DI LEGGE


INFORMAZIONI SULLA CONFORMITÀ UE

 Con la presente, Wacom dichiara che il presente prodotto è conforme alla direttiva RE, alla direttiva ErP e alla direttiva RoHS. Il testo completo della dichiarazione di conformità UE è disponibile al seguente indirizzo Internet: www.wacom.eu/certificates

Banda di frequenza: 667 kHz
Massima potenza di radiofrequenza trasmessa: inferiore a 15 dBµA/m

INFORMAZIONI SULLO SMALTIMENTO E SUL RICICLAGGIO

Direttiva sui rifiuti di apparecchiature elettriche ed elettroniche (RAEE)

 Nell'Unione europea, questa icona con etichetta indica che tale prodotto non deve essere smaltito con i rifiuti domestici. I prodotti Wacom sono soggetti a questa direttiva, pertanto è necessario sempre raccogliergli separatamente e portarli in un centro di raccolta per rifiuti elettrici ed elettronici, presente nel comune o nella regione di appartenenza, in modo da consentire il recupero e il riciclo. Fare riferimento alle informazioni della zona di appartenenza relative alle modalità di riciclo dei rifiuti elettrici ed elettronici in maniera responsabile nella propria regione.

