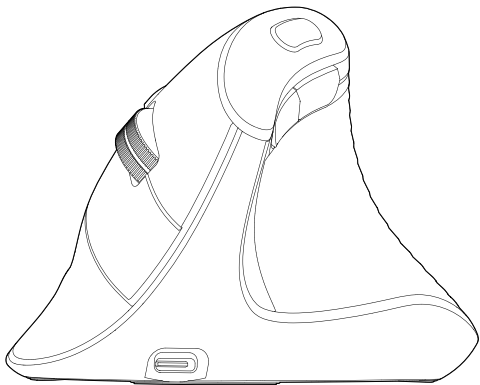


M502

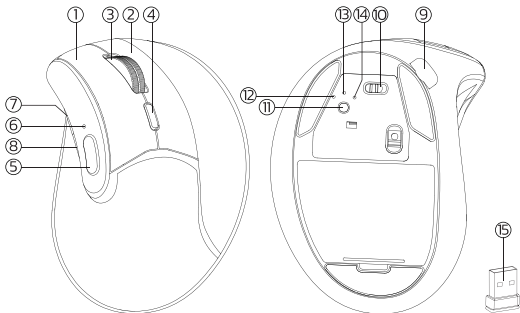
WIRELESS VERTICAL MOUSE



User Manual



Product Function



US/UK/CA

- | | |
|-------------------------|-------------------------|
| ① Left Button | ⑨ Charging Port |
| ② Right Button | ⑩ On/Off |
| ③ Scroll Wheel | ⑪ Mode Switch Button |
| ④ DPI Button | ⑫ 2.4G Indicator |
| ⑤ Desktop Button | ⑬ Bluetooth 1 Indicator |
| ⑥ DPI/Channel Indicator | ⑭ Bluetooth 2 Indicator |
| ⑦ Forward Button | ⑮ USB Receiver |
| ⑧ Back Button | |

Note: Bluetooth indicator/USB indicator flashes quickly on low battery.

DE

- | | |
|--------------------|-----------------------|
| ① Linke Taste | ⑨ Ladeanschluss |
| ② Rechte Taste | ⑩ Ein/Aus |
| ③ Scrollrad | ⑪ Modusschaltertaste |
| ④ DPI-Taste | ⑫ 2,4G-Anzeige |
| ⑤ Desktop-Taste | ⑬ Bluetooth 1-Anzeige |
| ⑥ DPI/Kanalanzeige | ⑭ Bluetooth 2-Anzeige |
| ⑦ Vorwärts-Taste | ⑮ USB-Empfänger |
| ⑧ Zurück-Taste | |

Hinweis: Bluetooth-Anzeige/USB-Anzeige blinkt schnell bei schwachem Akku.

FR

- | | |
|-------------------------------|---------------------------------|
| ① Bouton gauche | ⑨ Port de charge |
| ② Bouton droit | ⑩ On/Off |
| ③ Molette de défilement | ⑪ Bouton de commutation de mode |
| ④ Bouton DPI | ⑫ Indicateur 2.4G |
| ⑤ Bouton de bureau Indicateur | ⑬ Indicateur Bluetooth 1 |
| ⑥ DPI/Channel | ⑭ Indicateur Bluetooth 2 |
| ⑦ Bouton Avant | ⑮ Récepteur USB |
| ⑧ Bouton Retour | |

Remarque: l'indicateur Bluetooth/l'indicateur USB clignote rapidement lorsque la batterie est faible.

ES

- | | |
|----------------------------|---------------------------------|
| ① Botón izquierdo | ⑨ Puerto de carga |
| ② Botón derecho | ⑩ Encendido / Apagado |
| ③ Rueda de desplazamiento | ⑪ Botón del interruptor de modo |
| ④ Botón DPI | ⑫ Indicador 2.4G |
| ⑤ Botón de escritorio | ⑬ Indicador de Bluetooth 1 |
| ⑥ DPI / Indicador de canal | ⑭ Indicador de Bluetooth 2 |
| ⑦ Botón de avance | ⑮ Receptor USB |
| ⑧ Botón de retroceso | |

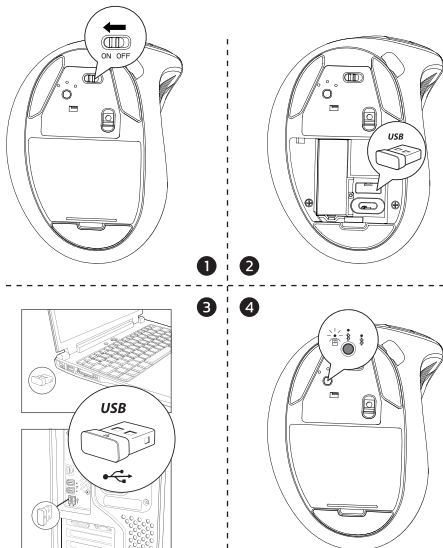
Nota: El indicador de Bluetooth / indicador USB parpadea rápidamente con batería baja.

IT

- | | |
|--------------------------|----------------------------------|
| ① Pulsante sinistro | ⑨ Porta di ricarica |
| ② Pulsante destro | ⑩ On/Off |
| ③ Rotella di scorrimento | ⑪ Pulsante interruttore modalità |
| ④ Pulsante DPI | ⑫ Indicatore 2.4G |
| ⑤ Pulsante desktop | ⑬ Indicatore Bluetooth 1 |
| ⑥ DPI/Indicatore canale | ⑭ Indicatore Bluetooth 2 |
| ⑦ Pulsante Avanti | ⑮ Ricevitore USB |
| ⑧ Pulsante Indietro | |

Nota: l'indicatore Bluetooth/indicatore USB lampeggia rapidamente quando la batteria è scarica.

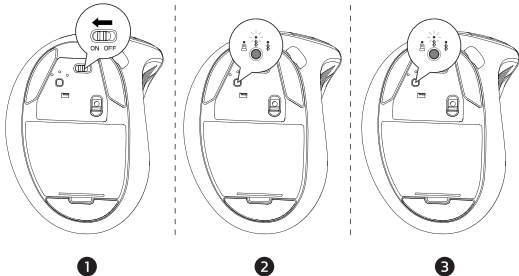
2.4G Connection



- 1 Turn on the mouse.
- 2 Take out the USB receiver.
- 3 Insert the USB receiver into the computer USB port.
- 4 Click the mode switch button to 2.4G mode then the first red LED will flash slowly.

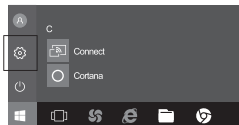
Bluetooth Connection

Windows System(Take Windows 10 as an example)



- 1 Turn on the mouse.
- 2 Press the switch button to switch to the second channel, then the blue LED will flash slowly.
- 3 Long press the switch button for 3~5 seconds until the blue LED flashes quickly. The mouse will be in Bluetooth pairing mode.

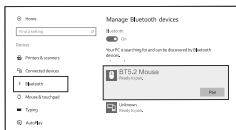
- 4 Click the “Bluetooth devices” button on the computer.



- 5 Click the “Add or remove Bluetooth devices” button.



- 6 Search the Bluetooth “BT5.2 Mouse”, and click the Pairing button.



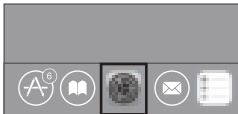
- 7 When the Bluetooth “BT5.2 Mouse” is connected, the mouse is ready to use.



Mac OS System

Please operate the Bluetooth installation steps(1~3) before pairing.

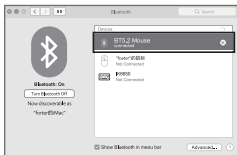
- 1 Click the "system preferences" button on the Mac.



- 2 Click the Bluetooth button on the system preference folder.

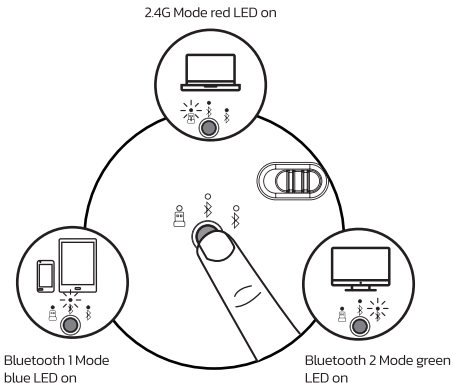


- 3 Search the Bluetooth "BT5.2 Mouse", and click the Pairing button. If installed completely, the mouse could be used normally.



Mode Switch

When 2.4G or Bluetooth connect successfully, shortly press the switch button at the bottom of the mouse, and you could switch the modes easily.



Package Include

1x Wireless Mouse
1x USB-C Cable
1x User Manual

Basic Parameters

Chipset	Yichip 1066
Engine	Optics
Mouse Resolution	1000/1600/2400 dpi
Mouse Button Life	Over 3 million
Mouse Size	112.08*79.92*77.86mm
Mouse Weight	121g

2.4G Transmission Parameters

Transmission distance	10m
Work voltage	3.7V
Work current	8.0±0.5mA
Rate of return	125Hz

Bluetooth Transmission Parameters

Transmission distance	10m
Work voltage	3.7V
Work current	6.0±0.5mA
Rate of return	125Hz
System needs	Bluetooth receiver device
USB interface	Window® 8, Windows® 10 or higher versions Mac OS X 10.10 or higher versions Android 4.3 or higher versions

FCC ID

Any Changes or modifications not expressly approved by the party responsible for compliance could void the user's authority to operate the equipment.

This device complies with part 15 of the FCC Rules. Operation is subject to the following two conditions: (1) This device may not cause harmful interference, and (2) this device must accept any interference received, including interference that may cause undesired operation.

FCC Radiation Exposure Statement

This equipment complies with FCC radiation exposure limits set forth for an uncontrolled environment.

Correct Disposal of This Product



(Waste Electrical & Electronic Equipment)

This Marking shown on the product or its literature, indicate that it should not be disposed with other household wastes at the end of its working life.

To prevent possible harm to the environment or human health from uncontrolled waste disposal, please separate this from other types of wastes and recycle it responsibly to promote the sustainable reuse of material resources Household user should contact either the retailer where they purchased this product or their local government office, for details of where and how they can take this item for environmentally safe recycling.

Business users should contact their supplier and check the terms and conditions of the purchase contract This product should not be mixed with other commercial wastes for disposal.

FCC Statement

This device complies with part 15 of the FCC Rules. Operation is subject to the following two conditions:

- (1) This device may not cause harmful interference, and
- (2) This device must accept any interference received, including interference that may cause undesired operation.

Any Changes or modifications not expressly approved by the party responsible for compliance could void the user's authority to operate the equipment.

Note: This equipment has been tested and found to comply with the limits for a Class B digital device, pursuant to part 15 of the FCC Rules. These limits are designed to provide reasonable protection against harmful interference in a residential installation. This equipment generates uses and can radiate radio frequency energy and, if not installed and used in accordance with the instructions, may cause harmful interference to radio communications. However, there is no guarantee that interference will not occur in a particular installation. If this equipment does cause harmful interference to radio or television reception, which can be determined by turning the equipment off and on, the user is encouraged to try to correct the interference by one or more of the following measures:

- Reorient or relocate the receiving antenna.
- Increase the separation between the equipment and receiver.
- Connect the equipment into an outlet on a circuit different from that to which the receiver is connected.
- Consult the dealer or an experienced radio/TV technician for help.



EU	REP
-----------	------------

C&E Connection E-Commerce(DE) GmbH
Zum Linnegraben 20, 65933,
Frankfurt am Main, Germany
Email: info@ce-connection.de
Phone: +49(069) 27246648

UK	REP
-----------	------------

CET PRODUCT SERVICE LTD.
Chase Business Centre, 39-41 Chase Side,
London N14 5BP United Kingdom
Email: info.cetservice@gmail.com
Phone: +447419325266