

cations not expressly approved by the party responsible for compliance could void the user's auth

art Guide(RFKBSTX-8-1)

ver of your computer.

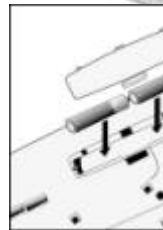
ting keyboard (and mouse for the A4Tech®Wireless Desktop).

caline batteries in the Wireless keyboard. Remove the battery compartment cover on the bottom of squeezing the cover in from the tab to release it.

lkaline batteries in the Wireless mouse (for the A4Tech Wireless Desktop).

ie battery compartment cover on the bottom of the mouse by pressing down on the tab. Insert the batteries n side the battery compartment. Replace the cover.

he up cover and move backward as shown here, and by sliding the cover off. Insert the batteries as ide the battery compartment. Replace the cover.



cations not expressly approved by the party responsible for compliance could void the user's auth

Keyboard or Wireless Desktop

e that your computer is turned off.

ig the Receiver' s Keyboard Cable:

hen connecting to an IBM AT keyboard port, use the 5-pin DIN connector already attached to the
yboard cable.

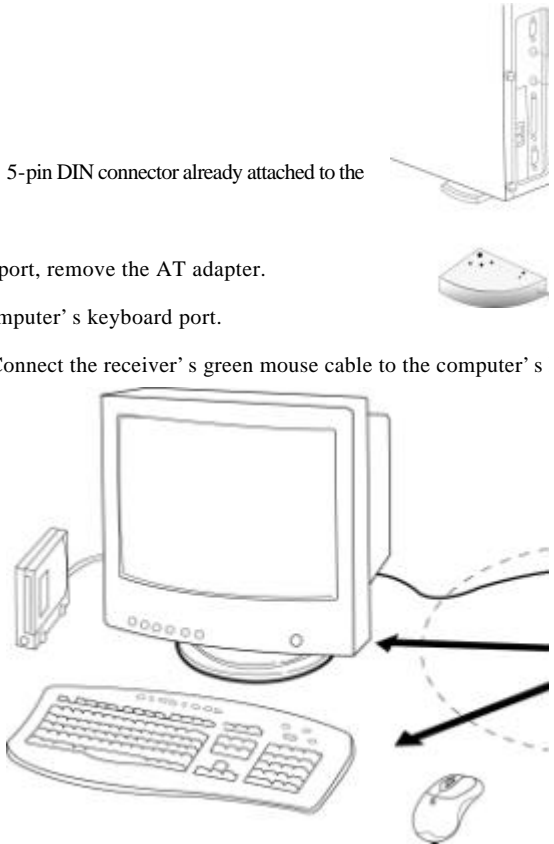
hen connecting to a PS/2-style, 6-pin DIN keyboard port, remove the AT adapter.

nnect the receiver' s purple keyboard cable to the computer' s keyboard port.

ig the Receiver' s Mouse Cable (Wireless Desktop): Connect the receiver' s green mouse cable to the computer' s
receiver eight inches (20 centimeters) from any
chanical device.

Mouse Software-iWheelWorks and ware-iKeyWorksOffice

lvantage of the many features your mouse and keyboard
the driver. The driver is in the installation diskette that
our mouse and keyboard
000/NT4.0 installation



cations not expressly approved by the party responsible for compliance could void the user's authentication of the product.

diskette into your floppy disk drive.

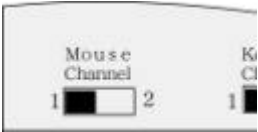
and then click Run.

Now, type **A:\setup**, where “A” is the letter of your floppy disk drive.

Follow the instructions on your screen to complete the installation.

Frequency Channel

The Keyboard and Mouse operates on two frequency channels. To prevent interference when using two mice, a different frequency channel should be used for each mouse. Refer to the following table to determine the frequency channel for your keyboard and mouse: Set the frequency channel on the receiver to **1** or **2**. Set the frequency channel on the mouse to **1** or **2**.



Keyboard and mouse ID code



Each mouse is assigned a unique ID code at manufacture, so the receiver only picks up the signal from your mouse and prevents other mice from operating on your computer. This feature can also be disabled, allowing other Wireless pointing devices to operate on your computer.

Wireless Mouse ID Code

After the installation is finished your computer reboots and the Wireless Mouse window (shown on the right) appears. Click **Connect ID** to establish a connection. The mouse is recognized and another RF pointing device will not function on your computer. If you have other RF pointing devices within 3 meters range or if you want other RF pointing devices to be able to operate on your computer, click **Cancel ID**.



cations not expressly approved by the party responsible for compliance could void the user's auth

cations not expressly approved by the party responsible for compliance could void the user's auth

Wireless Mouse ID Code

ireless Mouse on your computer without changing the Radio receiver; you just need to change the ID code. Refer

- F11] or [Shift + Alt + F12] to call up the Wireless Mouse ID Code window.

Mouse for a few seconds to establish a connection, then click Connect ID.

connected and the Wireless Mouse window closes.

he Wireless Mouse ID code window.

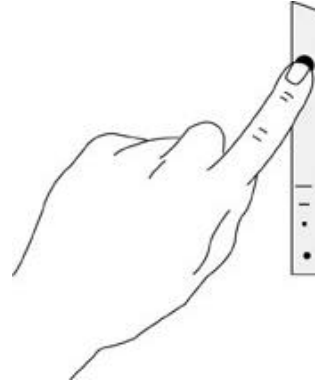
Wireless Keyboard ID Code

mmunication between the receiver and keyboard.

n the keyboard


ect button on the receiver the green LED light will show you the keyboard ID be

LED light is off then keyboard ID is disconnect.



cations not expressly approved by the party responsible for compliance could void the user's auth

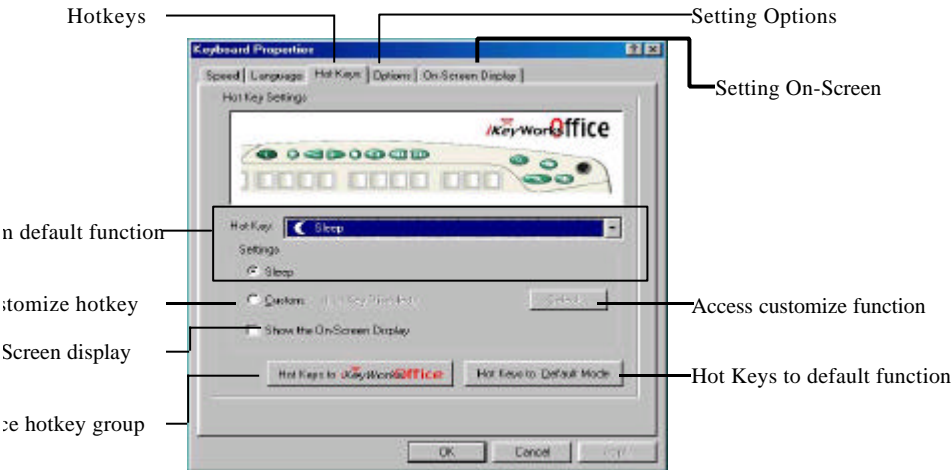
KeyWorksOffice Software

orksOffice™ software, double-click the  iKeyWorksOffice icon on the Windows Taskbar.

e software, brings you closer and keeps you in better touch with your desktop world. Set up and organize your keyboard in

WorksOffice software, customize your keyboard so you can be at your Internet home page, or favorite chat room

ush of a button. The Hot Keys are divided into two groups, as defined by their functions.



cations not expressly approved by the party responsible for compliance could void the user's auth

ot Keys

mmable Hot keys, which you must setup the iKeyWorksOffice software before using.

Default Functions	Microsoft Office program fun
key: Accesses your home web page for favorite internet address	Word: Access Microsoft word application
y: Launches an e-mail application	E-mail key: Launches an e-mail application
ey: Starts an application, accesses a web site and web sites	+ Font Size: Increase font size.
y: Displays a menu of internet search engines	- Font Size: Decrease font size.
rack Key: Plays the previous track.	Next Doc.: Open next document
k key: Plays the next track.	Previous Doc.: Open Previous Document
e key: Plays or pauses the CD/DVD.	Excel: Access Microsoft Excel application
Stops play.	Open document: Access my documents
p key: Increase sound volume.	Zoom In: To magnify the view of a documer
own key: Decreases sound volume.	Zoom Out: To demagnify the view of a doct
: Dramatically reduces the sound volume.	My Document: Access the My Document fu
key: Access the Windows Shut Down dialog box, where you can put n on stand-by or shut down windows.	Office Tools: Show the Office tools

cations not expressly approved by the party responsible for compliance could void the user's auth

r Hot Keys

: the hotkey as Shell Execution, Keystrokes, Office shortcut and Generic Command to meet your personal needs.

Select command type

Customize your Hotkeys

Shell execution

Keystrokes

Office shortcut

Generic Command

Disable the Hot key

Select

Select command type

Type the location and name of the item (Folder, file, URL, http://... or email address: email@...) you want to open or execute.

Mode

☐ Minimized Window

☐ Execute mode for folders

Type a name to appear as an On-Screen Display

Ok Cancel

Type the name of file, folder

Browse File

Browse Folder

My favorite

Email address book

Show the name of the hot

cations not expressly approved by the party responsible for compliance could void the user's auth


e Mouse

s software, you have all the advantages of the Microsoft IntelliMouse wheel, and but you can also scroll in Windows
el; the wheel functions as both a wheel and a button. Simply click the wheel as you would a programmable standar

Zooming with the Mouse

What is it?	How to do it?
Use wheel Scroll for precise up and down movement.	To scroll up, move the wheel forward; to scroll down, move the
Use Zoom to either magnify or demagnify the view of a document in an application that supports it.	Place the cursor in an application that is Microsoft Office compatible. Press and hold the Ctrl key on the keyboard, then move the wheel forward; to zoom out, move the wheel back
Use AutoScroll in Windows 95/98/Me/2000/NT and Microsoft Office97/2000 compatible applications to scroll through large documents.	Assign AutoScroll to a button on the mouse if it is not already. Place the cursor in an application, Press the mouse button AutoScroll. The AutoScroll icon appears.
AutoScroll allows you scroll a document automatically without having to move the mouse continuously.	Move the mouse once in the direction you want to scroll. Then move the pointer from the starting point, the faster the scroll. To stop AutoScroll, press any mouse button.

ies Settings

perties window you can customize many settings for your mouse including button assignments, scroll wheels and cursor
perties window double-click on the mouse  icon in the system tray. The **Mouse Properties** window has six tabs

- s:** Click the down arrow to select the preferred function for each button.
- l:** Increase the speed for executing a double-click.
- on:** Configure your mouse for left- or right-hand use. The default setting for buttons 1 and 2 will be reversed.

cations not expressly approved by the party responsible for compliance could void the user's auth

you change the way the cursor appears. Click the down arrow under **Scheme** and choose the setting you want. The hown in the pane below. You can browse to additional pointers, then create your own scheme using the **Save A**

ts you adjust how fast the cursor moves on the screen.
heck this box to automatically have the cursor move to the default button in each new dialog box or window.
ox is checked, pressing and releasing the **[Ctrl]** key will highlight the cursor.
ox when you want your cursor to display pointer trails. This option is useful when using an LCD display that can t

ows all the available commands (including User-defined Command Menus) that you can assign to either the NetJump o
: The NetJump grid groups commonly used Web-browsing commands. To change a command, select a new one from
con in the grid that you want to change.
1 grid): The LuckyJump grid groups all-purpose commands. To change a command, select a new one from the C
ie grid that you want to change.
verse scrolling direction box to change the scrolling direction when you turn the scroll wheel. Select the *Scroll* or *Scr*
n to set the scrolling speed to suit your work habits.

ump Commands

commonly used tasks for Web browsing into one convenient grid and puts them right under the cursor. To use NetJu
nd select the **Buttons** tab. Assign NetJump in the drop-down menu of the button you want. Click **OK** to close
he assigned button to open the NetJump grid and execute your command. (See the *Settings Tab* section above for ins

cations not expressly approved by the party responsible for compliance could void the user's auth

yJump Commands

commonly used tasks for Windows environments into one convenient grid and puts them right under the cursor. To u
window and select the **Buttons** tab. Assign LuckyJump in the drop-down menu of the button you want. Click **O**
Now click the assigned button to open the LuckyJump grid and execute your command.