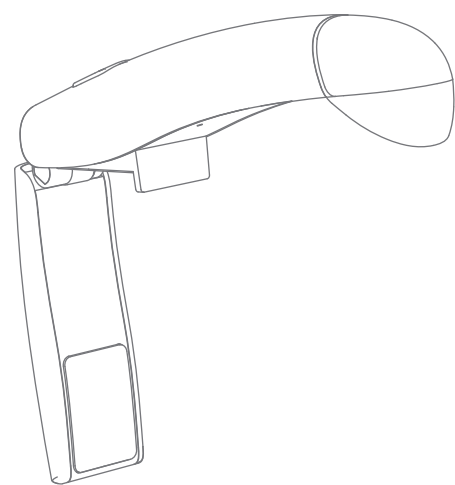


# TV BACKLIGHT

## L01 Pro



USER MANUAL

V1.05

CUSTOMER SUPPORT

North America [service@customerafter-sales.com](mailto:service@customerafter-sales.com)

EU&UK [service-EU@customerafter-sales.com](mailto:service-EU@customerafter-sales.com)

English

01-18

# CONTENTS

PRECAUTIONARY	01
PACKING LIST	01
PRODUCT DESCRIPTION	02
PRODUCT INSTALLATION	02
APP OPERATION	05
APP INTERFACE FUNCTION DESCRIPTION	08
PRODUCT PARAMETERS	15
TROUBLESHOOTING	16
WARRANTY & CUSTOMER SERVICE	16
WARNINGS	17

English &gt;&gt;

## PRECAUTIONARY

1: Please read this instruction manual carefully before using the L01Pro. It contains important information about your safety as well as operating and maintenance instructions.

2: Please observe all safety precautions to prevent damage caused by improper use of the L01Pro.

3: We are not responsible for any damage caused by improper use or incorrect operation.

4. Before pasting the light strip, please wipe the position of the edge around the back shell of the TV set, to prevent dust caused by the phenomenon that the light strip is not firmly pasted off.

5: The starting position for attaching the light strip starts at the top center of the TV's rear case.

6: When you use it for the first time, please set the installation direction of the light strip and the number of light beads on the APP side.

7: If you are worried that the machine will be loose, you can use a spare 3M adhesive to strengthen the fixed machine.

## PACKING LIST



Machine \*1



Power adapter \*1



LED Light Strip \*1



Fixed buckle \*12



Alcohol wiping  
cloth \*1



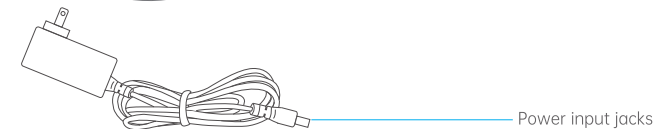
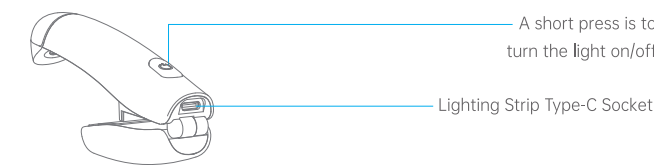
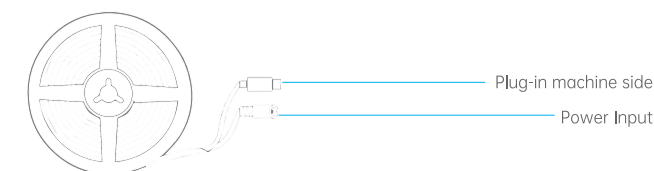
3M adhesive \*1



Quick guide \*1

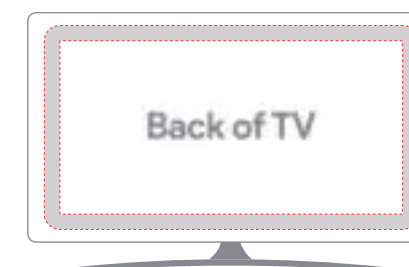
Instruction  
manual \*1

## PRODUCT DESCRIPTION



## PRODUCT INSTALLATION

1: Wipe the dust and dirt from the back case of the TV set with a rag first, and then clean it again afterwards with the alcohol wipe that comes with the package.



02

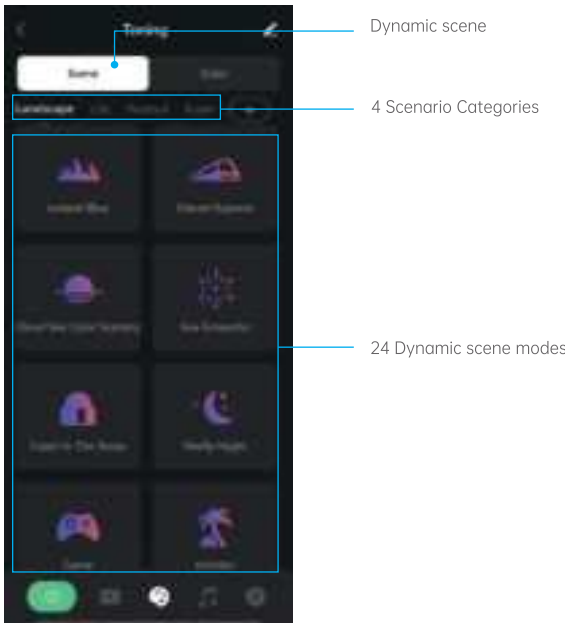






3.3: Toning Interface Description

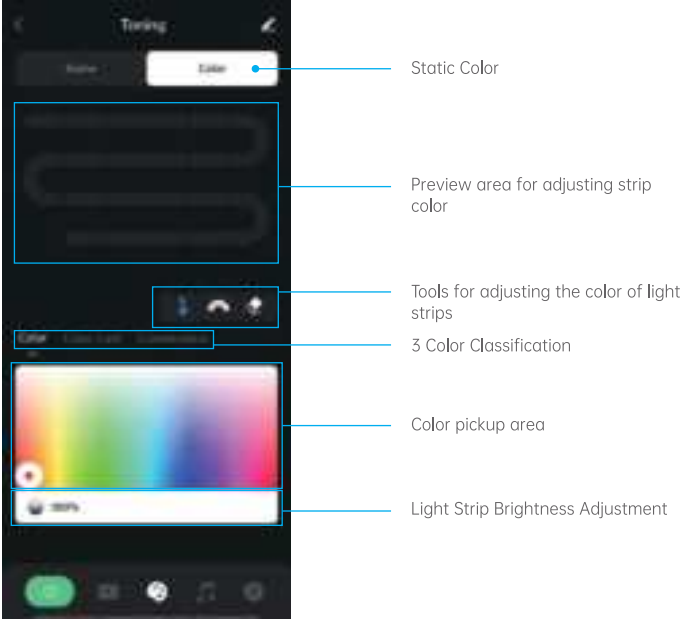
Dynamic and static light modes, choose from 24 different dynamic light effects or static color palettes, pick to fit your mood and environment.



Dynamic scene

4 Scenario Categories

24 Dynamic scene modes



Static Color

Preview area for adjusting strip color

Tools for adjusting the color of light strips

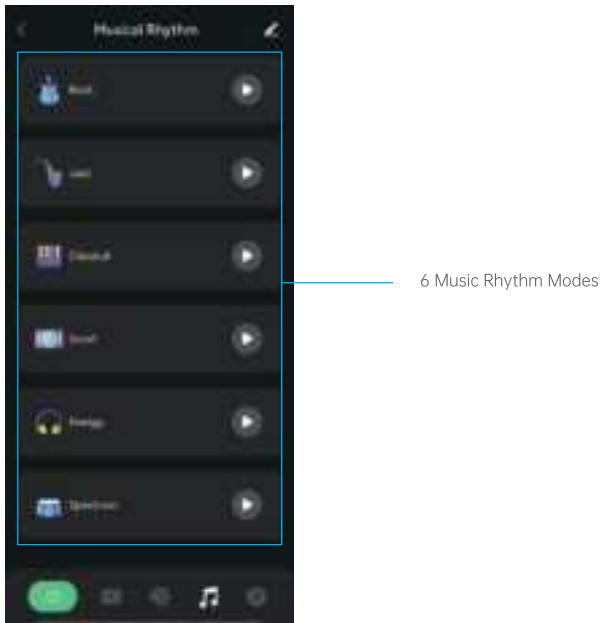
3 Color Classification

Color pickup area

Light Strip Brightness Adjustment

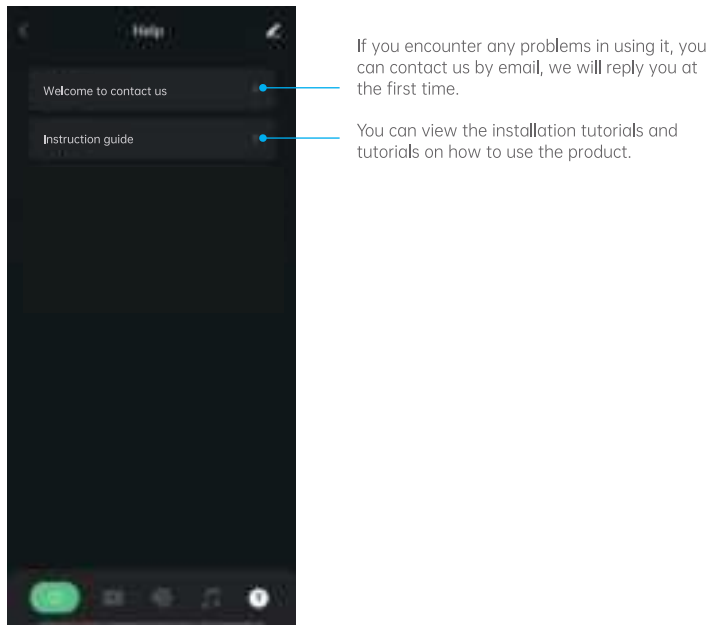
3.4: Musical Rhythm Interface Description

There are 6 music rhythm modes to choose from - Rock, Jazz, Classical, Roll, Energy, Spectrum.



6 Music Rhythm Modes

3.5: Help interface description



If you encounter any problems in using it, you can contact us by email, we will reply you at the first time.

You can view the installation tutorials and tutorials on how to use the product.

PRODUCT PARAMETERS

Model	L01 Pro
Support grid voltage	Input: AC100-240V
Power	24W Max
Colors	Full color
Bluetooth Protocol	Bluetooth 4.2
Supported OS	Android 7.0 above or iOS 11.0 above
Supported APP	uLamp

TROUBLESHOOTING

1. Cannot connect to Bluetooth.
  - Ensure Bluetooth on your smartphone has been turned on.
  - Your smartphone may be incompatible with the uLamp app. Try using a different smartphone then reconnect.
  - Power the Strip Light and your smartphone Bluetooth off then on, then try again.
  - Ensure that your smartphone is within 1m/3.28ft of the Strip Light when connecting.
  - Clear any obstructions that are between the Strip Light and your smartphone.
2. The Strip Light does not display the full selected color/Some LEDs do not light up.

Please contact the support team for rapid product replacement.
3. There will be some color differences between the background color and the screen color, which is normal under the same series of colors

WARRANTY & CUSTOMER SERVICE

- At FFJ, we offer a 12-month warranty covering product quality issues and a 45-day money-back and return guarantee for all our products.
- If you have any questions or require assistance, please don't hesitate to reach out. Our dedicated customer service team is available around the clock, 24/7, via email at [service@customerafter-sales.com](mailto:service@customerafter-sales.com) and through Amazon Messages.

WARNINGS

RISK OF EXPLOSION IF BATTERY IS REPLACED BY AN INCORRECT TYPE.  
DISPOSE OF USED BATTERIES ACCORDING TO THE INSTRUCTIONS

⎓ The symbol indicates DC voltage

♻️ RECYCLING

This product bears the selective sorting symbol for Waste electrical and electronic equipment (WEEE).This means that this product must be handled pursuant to European directive2012/19/EU in order to be recycled or dismantled to minimize its impact on the environment.

FCC Caution:  
Any Changes or modifications not expressly approved by the party responsible for compliance could void the user's authority to operate the equipment. This device complies with part 15 of the FCC Rules. Operation is subject to the following two conditions: (1) This device may not cause harmful interference, and (2) this device must accept any interference received, including interference that may cause undesired operation.

IMPORTANT NOTE:  
Note:  
This equipment has been tested and found to comply with the limits for a Class B digital device, pursuant to part 15 of the FCC Rules.

These limits are designed to provide reasonable protection against harmful interference in a residential installation. This equipment generates, uses and can radiate radio frequency energy and, if not installed and used in accordance with the instructions, may cause harmful interference to radio communications. However, there is no guarantee that interference will not occur in a particular installation. If this equipment does cause harmful interference to radio or television reception, which can be determined by turning the equipment off and on, the user is encouraged to try to correct the interference by one or more of the following measures:  
—Reorient or relocate the receiving antenna.  
—Increase the separation between the equipment and receiver.  
—Connect the equipment into an outlet on a circuit different from that to which the receiver is connected.  
—Consult the dealer or an experienced radio/TV technician for help. FCC Radiation Exposure Statement:  
This equipment complies with FCC radiation exposure limits set forth for an uncontrolled environment.This equipment should be installed and operated with minimum distance 20cm between the radiator& your body.