

# FCC SAR Test Report

Report No. : SA190628E01B  
Applicant : Media Tek Inc.  
Address : No.1, Duxing 1st Rd., East District, Hsinchu City 300, Taiwan (R.O.C.)  
Product : 2TX 11ac + BLE Combo Card  
FCC ID : VQFMT7663  
Brand : MTK  
Model No. : MT7663  
Standards : FCC 47 CFR Part 2 (2.1093), IEEE C95.1:1992, IEEE Std 1528:2013  
KDB 865664 D01 v01r04, KDB 865664 D02 v01r02, KDB 248227 D01 v02r02,  
KDB 447498 D01 v06  
Sample Received Date : Jun. 28, 2019  
Date of Testing : Oct. 25, 2019 ~ Nov. 08, 2019  
Lab Address : No. 47-2, 14th Ling, Chia Pau Vil., Lin Kou Dist., New Taipei City, Taiwan  
Test Location : No. 19, Hwa Ya 2nd Rd., Wen Hwa Vil., Kwei Shan Dist., Taoyuan City, Taiwan

**CERTIFICATION:** The above equipment have been tested by **Bureau Veritas Consumer Products Services (H.K.) Ltd., Taoyuan Branch–Lin Kou Laboratories**, and found compliance with the requirement of the above standards. The test record, data evaluation & Equipment Under Test (EUT) configurations represented herein are true and accurate accounts of the measurements of the sample's SAR characteristics under the conditions specified in this report. It should not be reproduced except in full, without the written approval of our laboratory. The client should not use it to claim product certification, approval, or endorsement by TAF or any government agencies.

Prepared By :



Rona Chen / Specialist

Approved By :



Gordon Lin / Manager



FCC Accredited No.: TW0003

This report is for your exclusive use. Any copying or replication of this report to or for any other person or entity, or use of our name or trademark, is permitted only with our prior written permission. This report sets forth our findings solely with respect to the test samples identified herein. The results set forth in this report are not indicative or representative of the quality or characteristics of the lot from which a test sample was taken or any similar or identical product unless specifically and expressly noted. Our report includes all of the tests requested by you and the results thereof based upon the information that you provided to us. You have 60 days from date of issuance of this report to notify us of any material error or omission caused by our negligence, provided, however, that such notice shall be in writing and shall specifically address the issue you wish to raise. A failure to raise such issue within the prescribed time shall constitute your unqualified acceptance of the completeness of this report, the tests conducted and the correctness of the report contents. Unless specific mention, the uncertainty of measurement has been explicitly taken into account to declare the compliance or non-compliance to the specification.

## Table of Contents

<b>Release Control Record .....</b>	<b>3</b>
<b>1. Summary of Maximum SAR Value .....</b>	<b>4</b>
<b>2. Description of Equipment Under Test .....</b>	<b>5</b>
<b>3. SAR Measurement System .....</b>	<b>6</b>
3.1 Definition of Specific Absorption Rate (SAR) .....	6
3.2 SPEAG DASY6 System .....	6
3.2.1 Robot .....	7
3.2.2 Probes .....	8
3.2.3 Data Acquisition Electronics (DAE) .....	8
3.2.4 Phantoms .....	8
3.2.5 Device Holder .....	9
3.2.6 System Validation Dipoles .....	10
3.2.7 Power Source .....	10
3.2.8 Tissue Simulating Liquids .....	11
3.3 SAR System Verification .....	13
3.4 SAR Measurement Procedure .....	14
3.4.1 Area & Zoom Scan Procedure .....	14
3.4.2 Volume Scan Procedure .....	14
3.4.3 Power Drift Monitoring .....	15
3.4.4 Spatial Peak SAR Evaluation .....	15
3.4.5 SAR Averaged Methods .....	15
<b>4. SAR Measurement Evaluation .....</b>	<b>16</b>
4.1 EUT Configuration and Setting .....	16
4.2 EUT Testing Position .....	18
4.2.1 Body Exposure Conditions .....	18
4.3 Tissue Verification .....	19
4.4 System Validation .....	19
4.5 System Verification .....	20
4.6 Maximum Output Power .....	21
4.6.1 Maximum Target Conducted Power .....	21
4.6.2 Measured Conducted Power Result .....	25
4.7 SAR Testing Results .....	26
4.7.1 SAR Test Reduction Considerations .....	26
4.7.2 SAR Results for Body Exposure Condition (Test Separation Distance is 5 mm) .....	27
4.7.3 SAR Measurement Variability .....	29
4.7.4 Simultaneous Multi-band Transmission Evaluation .....	30
<b>5. Calibration of Test Equipment .....</b>	<b>31</b>
<b>6. Measurement Uncertainty .....</b>	<b>32</b>
<b>7. Information of the Testing Laboratories .....</b>	<b>33</b>
<b>Appendix A. SAR Plots of System Verification</b>	
<b>Appendix B. SAR Plots of SAR Measurement</b>	
<b>Appendix C. Calibration Certificate for Probe and Dipole</b>	
<b>Appendix D. Photographs of EUT and Setup</b>	

## Release Control Record

Report No.	Reason for Change	Date Issued
SA190628E01B	Initial release	Nov. 18, 2019

# FCC SAR Test Report

## 1. Summary of Maximum SAR Value

Equipment Class	Mode	Highest SAR-1g Body Tested at 5 mm (W/kg)
DTS	2.4G WLAN	0.33
NII	5.3G WLAN	0.42
	5.6G WLAN	0.64
	5.8G WLAN	0.79
DSS	Bluetooth	0.12

Highest Simultaneous Transmission SAR	Highest SAR-1g Body Tested at 5 mm (W/kg)
	0.68

### Note:

- The SAR criteria (**Head & Body: SAR-1g 1.6 W/kg, and Extremity: SAR-10g 4.0 W/kg**) for general population/uncontrolled exposure is specified in FCC 47 CFR part 2 (2.1093) and ANSI/IEEE C95.1-1992.

## FCC SAR Test Report

### 2. Description of Equipment Under Test

<b>EUT Type</b>	2TX 11ac + BLE Combo Card
<b>FCC ID</b>	VQFMT7663
<b>Brand Name</b>	MTK
<b>Model Name</b>	MT7663
<b>Tx Frequency Bands (Unit: MHz)</b>	WLAN : 2412 ~ 2462, 5180 ~ 5240, 5260 ~ 5320, 5500 ~ 5720, 5745 ~ 5825 Bluetooth : 2402 ~ 2480
<b>Uplink Modulations</b>	802.11b : DSSS 802.11a/g/n/ac : OFDM Bluetooth : GFSK, $\pi/4$ -DQPSK, 8-DPSK
<b>Maximum Tune-up Conducted Power (Unit: dBm)</b>	Please refer to section 4.6.1 of this report
<b>Antenna Type</b>	Fixed Internal Antenna
<b>EUT Stage</b>	Engineering Sample

#### Note:

- The EUT contains two samples are listed as below.

Sample	Description
1	PCIe interface
2	SDIO interface

#### Note:

PCIe and SDIO interface signal switch by IC bonding on the same pin, Most of the layout including RF, PMU, and the control signal is the same.

- The above EUT information is declared by manufacturer and for more detailed features description please refers to the manufacturer's specifications or User's Manual.

#### List of Antenna:

<b>Antenna</b>	<b>Brand Name</b>	PSA
	<b>Model Name</b>	Chain 0: RFMTA340718EMLB301 Chain 1: RFMTA340718EMLB301
	<b>Antenna Type</b>	PIFA
	<b>Connector Type</b>	i-pex (MHF)

### **3. SAR Measurement System**

#### **3.1 Definition of Specific Absorption Rate (SAR)**

SAR is related to the rate at which energy is absorbed per unit mass in an object exposed to a radio field. The SAR distribution in a biological body is complicated and is usually carried out by experimental techniques or numerical modeling. The standard recommends limits for two tiers of groups, occupational/controlled and general population/uncontrolled, based on a person's awareness and ability to exercise control over his or her exposure. In general, occupational/controlled exposure limits are higher than the limits for general population/uncontrolled.

The SAR definition is the time derivative (rate) of the incremental energy (dW) absorbed by (dissipated in) an incremental mass (dm) contained in a volume element (dv) of a given density (ρ). The equation description is as below:

$$SAR = \frac{d}{dt} \left( \frac{dW}{dm} \right) = \frac{d}{dt} \left( \frac{dW}{\rho dv} \right)$$

SAR is expressed in units of Watts per kilogram (W/kg)

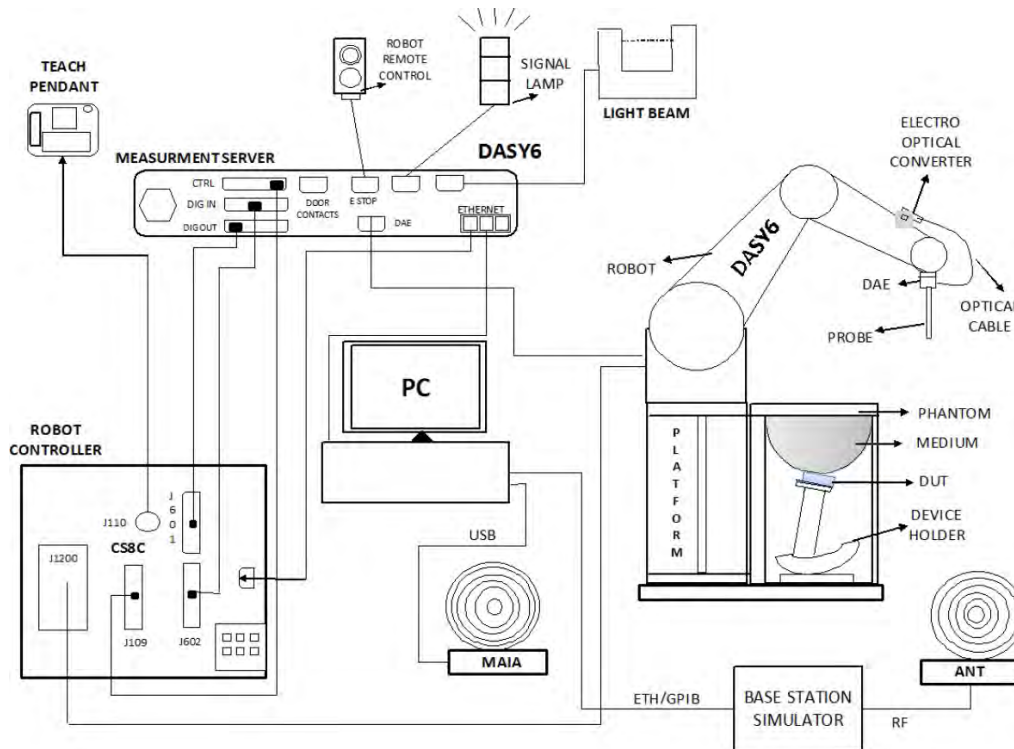
SAR measurement can be related to the electrical field in the tissue by

$$SAR = \frac{\sigma |E|^2}{\rho}$$

Where: σ is the conductivity of the tissue, ρ is the mass density of the tissue and E is the RMS electrical field strength.

#### **3.2 SPEAG DASY6 System**

DASY6 system consists of high precision robot, probe alignment sensor, phantom, robot controller, controlled measurement server and near-field probe. The robot includes six axes that can move to the precision position of the DASY6 software defined. The DASY6 software can define the area that is detected by the probe. The robot is connected to controlled box. Controlled measurement server is connected to the controlled robot box. The DAE includes amplifier, signal multiplexing, AD converter, offset measurement and surface detection. It is connected to the Electro-optical coupler (ECO). The ECO performs the conversion from the optical into digital electric signal of the DAE and transfers data to the PC.

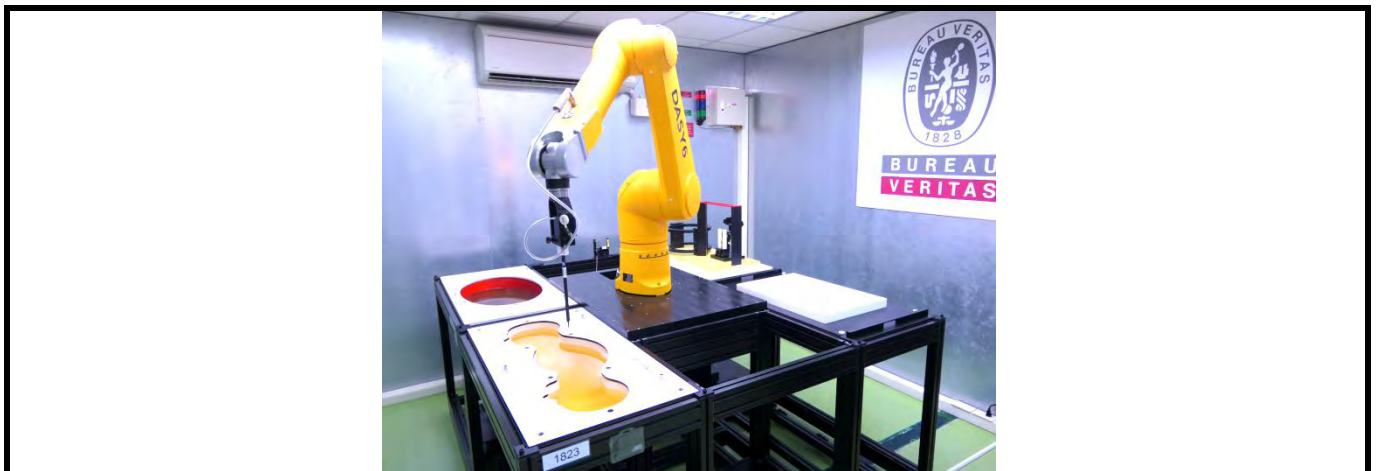


**Fig-3.1 SPEAG DASY6 System Setup**

## 3.2.1 Robot

The DASY6 systems use the high precision robots from Stäubli SA (France). For the 6-axis controller system, the robot controller version of CS8c from Stäubli is used. The Stäubli robot series have many features that are important for our application:

- High precision (repeatability  $\pm 0.035$  mm)
- High reliability (industrial design)
- Jerk-free straight movements
- Low ELF interference (the closed metallic construction shields against motor control fields)




**Fig-3.2 SPEAG DASY6 System**


## FCC SAR Test Report

### 3.2.2 Probes


The SAR measurement is conducted with the dosimetric probe. The probe is specially designed and calibrated for use in liquid with high permittivity. The dosimetric probe has special calibration in liquid at different frequency.

<b>Model</b>	EX3DV4	
<b>Construction</b>	Symmetrical design with triangular core. Built-in shielding against static charges. PEEK enclosure material (resistant to organic solvents, e.g., DGBE).	
<b>Frequency</b>	4 MHz to 10 GHz Linearity: $\pm 0.2$ dB	
<b>Directivity</b>	$\pm 0.1$ dB in TSL (rotation around probe axis) $\pm 0.3$ dB in TSL (rotation normal to probe axis)	
<b>Dynamic Range</b>	10 $\mu$ W/g to 100 mW/g Linearity: $\pm 0.2$ dB (noise: typically $< 1$ $\mu$ W/g)	
<b>Dimensions</b>	Overall length: 337 mm (Tip: 20 mm) Tip diameter: 2.5 mm (Body: 12 mm) Typical distance from probe tip to dipole centers: 1 mm	

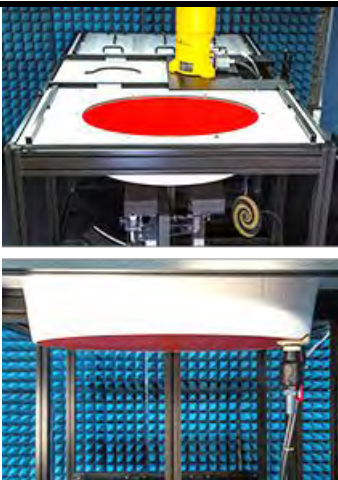
### 3.2.3 Data Acquisition Electronics (DAE)

<b>Model</b>	DAE3, DAE4	
<b>Construction</b>	Signal amplifier, multiplexer, A/D converter and control logic. Serial optical link for communication with DASY embedded system (fully remote controlled). Two step probe touch detector for mechanical surface detection and emergency robot stop.	
<b>Measurement Range</b>	-100 to +300 mV (16 bit resolution and two range settings: 4mV, 400mV)	
<b>Input Offset Voltage</b>	$< 5\mu$ V (with auto zero)	
<b>Input Bias Current</b>	$< 50$ fA	
<b>Dimensions</b>	60 x 60 x 68 mm	


### 3.2.4 Phantoms


<b>Model</b>	SAM-Twin Phantom	
<b>Construction</b>	The shell corresponds to the specifications of the Specific Anthropomorphic Mannequin (SAM) phantom defined in IEEE Std 1528 and IEC 62209-1. It enables the dosimetric evaluation of left and right hand phone usage as well as body-mounted usage at the flat phantom region. A cover prevents evaporation of the liquid. Reference markings on the phantom allow the complete setup of all predefined phantom positions and measurement grids by teaching three points with the robot.	
<b>Material</b>	Vinylester, fiberglass reinforced (VE-GF)	
<b>Shell Thickness</b>	2 $\pm$ 0.2 mm (6 $\pm$ 0.2 mm at ear point)	
<b>Dimensions</b>	Length: 1000 mm Width: 500 mm Height: adjustable feet	
<b>Filling Volume</b>	approx. 25 liters	


## FCC SAR Test Report

<b>Model</b>	ELI	
<b>Construction</b>	The ELI phantom is used for compliance testing of handheld and body-mounted wireless devices. ELI is fully compatible with the IEC 62209-2 standard and all known tissue simulating liquids. ELI has been optimized regarding its performance and can be integrated into our standard phantom tables. A cover prevents evaporation of the liquid. Reference markings on the phantom allow installation of the complete setup, including all predefined phantom positions and measurement grids, by teaching three points. The phantom is compatible with all SPEAG dosimetric probes and dipoles.	
<b>Material</b>	Vinylester, fiberglass reinforced (VE-GF)	
<b>Shell Thickness</b>	2.0 ± 0.2 mm (bottom plate)	
<b>Dimensions</b>	Major axis: 600 mm Minor axis: 400 mm	
<b>Filling Volume</b>	approx. 30 liters	


### 3.2.5 Device Holder

<b>Model</b>	MD4HHTV5 - Mounting Device for Hand-Held Transmitters	
<b>Construction</b>	In combination with the Twin SAM or ELI phantoms, the Mounting Device for Hand-Held Transmitters enables rotation of the mounted transmitter device to specified spherical coordinates. At the heads, the rotation axis is at the ear opening. Transmitter devices can be easily and accurately positioned according to IEC 62209-1, IEEE 1528, FCC, or other specifications. The device holder can be locked for positioning at different phantom sections (left head, right head, flat).	
<b>Material</b>	Polyoxymethylene (POM)	


<b>Model</b>	MDA4WTV5 - Mounting Device Adaptor for Ultra Wide Transmitters	
<b>Construction</b>	An upgrade kit to Mounting Device to enable easy mounting of wider devices like big smart-phones, e-books, small tablets, etc. It holds devices with width up to 140 mm.	
<b>Material</b>	Polyoxymethylene (POM)	

<b>Model</b>	MDA4SPV6 - Mounting Device Adaptor for Smart Phones	
<b>Construction</b>	The solid low-density MDA4SPV6 adaptor assuring no impact on the DUT radiation performance and is conform with any DUT design and shape.	
<b>Material</b>	ROHACELL	


## FCC SAR Test Report

<b>Model</b>	MD4LAPV5 - Mounting Device for Laptops and other Body-Worn Transmitters	
<b>Construction</b>	In combination with the Twin SAM or ELI phantoms, the Mounting Device (Body-Worn) enables testing of transmitter devices according to IEC 62209-2 specifications. The device holder can be locked for positioning at a flat phantom section.	
<b>Material</b>	Polyoxymethylene (POM), PET-G, Foam	

### 3.2.6 System Validation Dipoles

<b>Model</b>	D-Serial	
<b>Construction</b>	Symmetrical dipole with 1/4 balun. Enables measurement of feed point impedance with NWA. Matched for use near flat phantoms filled with tissue simulating solutions.	
<b>Frequency</b>	750 MHz to 5800 MHz	
<b>Return Loss</b>	> 20 dB	
<b>Power Capability</b>	> 100 W (f < 1GHz), > 40 W (f > 1GHz)	

### 3.2.7 Power Source

<b>Model</b>	Powersource1	
<b>Signal Type</b>	Continuous Wave	
<b>Operating Frequencies</b>	600 MHz to 5850 MHz	
<b>Output Power</b>	-5.0 dBm to +17.0 dBm	
<b>Power Supply</b>	5V DC, via USB jack	
<b>Power Consumption</b>	<3 W	
<b>Applications</b>	System performance check and validation with a CW signal.	

## FCC SAR Test Report

### 3.2.8 Tissue Simulating Liquids

For SAR measurement of the field distribution inside the phantom, the phantom must be filled with homogeneous tissue simulating liquid to a depth of at least 15 cm. For head SAR testing, the liquid height from the ear reference point (ERP) of the phantom to the liquid top surface is larger than 15 cm. For body SAR testing, the liquid height from the center of the flat phantom to the liquid top surface is larger than 15 cm. The nominal dielectric values of the tissue simulating liquids in the phantom and the tolerance of 10 % are listed in Table-3.1.

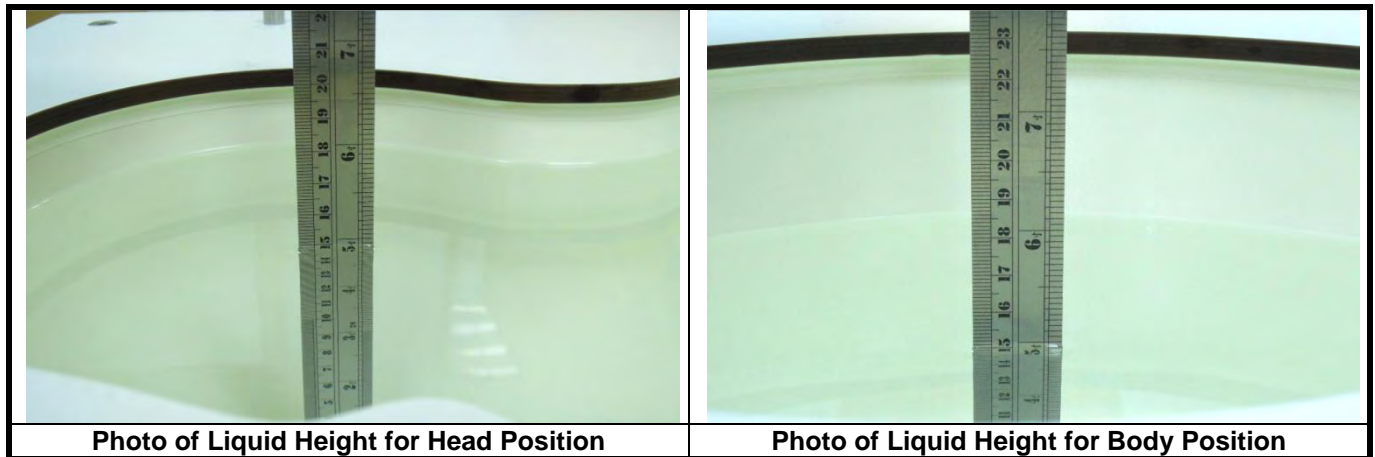


Table-3.1 Targets of Tissue Simulating Liquid

Frequency (MHz)	Target Permittivity	Range of $\pm 10\%$	Target Conductivity	Range of $\pm 10\%$
450	43.5	39.2 ~ 47.9	0.87	0.78 ~ 0.96
750	41.9	37.7 ~ 46.1	0.89	0.80 ~ 0.98
835	41.5	37.4 ~ 45.7	0.90	0.81 ~ 0.99
900	41.5	37.4 ~ 45.7	0.97	0.87 ~ 1.07
1450	40.5	36.5 ~ 44.6	1.20	1.08 ~ 1.32
1500	40.4	36.4 ~ 44.4	1.23	1.11 ~ 1.35
1640	40.2	36.2 ~ 44.2	1.31	1.18 ~ 1.44
1750	40.1	36.1 ~ 44.1	1.37	1.23 ~ 1.51
1800	40.0	36.0 ~ 44.0	1.40	1.26 ~ 1.54
1900	40.0	36.0 ~ 44.0	1.40	1.26 ~ 1.54
2000	40.0	36.0 ~ 44.0	1.40	1.26 ~ 1.54
2100	39.8	35.8 ~ 43.8	1.49	1.34 ~ 1.64
2300	39.5	35.6 ~ 43.5	1.67	1.50 ~ 1.84
2450	39.2	35.3 ~ 43.1	1.80	1.62 ~ 1.98
2600	39.0	35.1 ~ 42.9	1.96	1.76 ~ 2.16
3000	38.5	34.7 ~ 42.4	2.40	2.16 ~ 2.64
3500	37.9	34.1 ~ 41.7	2.91	2.62 ~ 3.20
4000	37.4	33.7 ~ 41.1	3.43	3.09 ~ 3.77
4500	36.8	33.1 ~ 40.5	3.94	3.55 ~ 4.33
5000	36.2	32.6 ~ 39.8	4.45	4.01 ~ 4.90
5200	36.0	32.4 ~ 39.6	4.66	4.19 ~ 5.13
5400	35.8	32.2 ~ 39.4	4.86	4.37 ~ 5.35
5600	35.5	32.0 ~ 39.1	5.07	4.56 ~ 5.58
5800	35.3	31.8 ~ 38.8	5.27	4.74 ~ 5.80
6000	35.1	31.6 ~ 38.6	5.48	4.93 ~ 6.03

## FCC SAR Test Report

The dielectric properties of the tissue simulating liquids are defined in IEC 62209-1 and IEC 62209-2. The dielectric properties of the tissue simulating liquids were verified prior to the SAR evaluation using a dielectric assessment kit and a network analyzer.

Since the range of  $\pm 10\%$  of the required target values is used to measure relative permittivity and conductivity, the SAR correction procedure is applied to correct measured SAR for the deviations in permittivity and conductivity. Only positive correction has been used to scale up the measured SAR, and SAR result would not be corrected if the correction  $\Delta$  SAR has a negative sign.

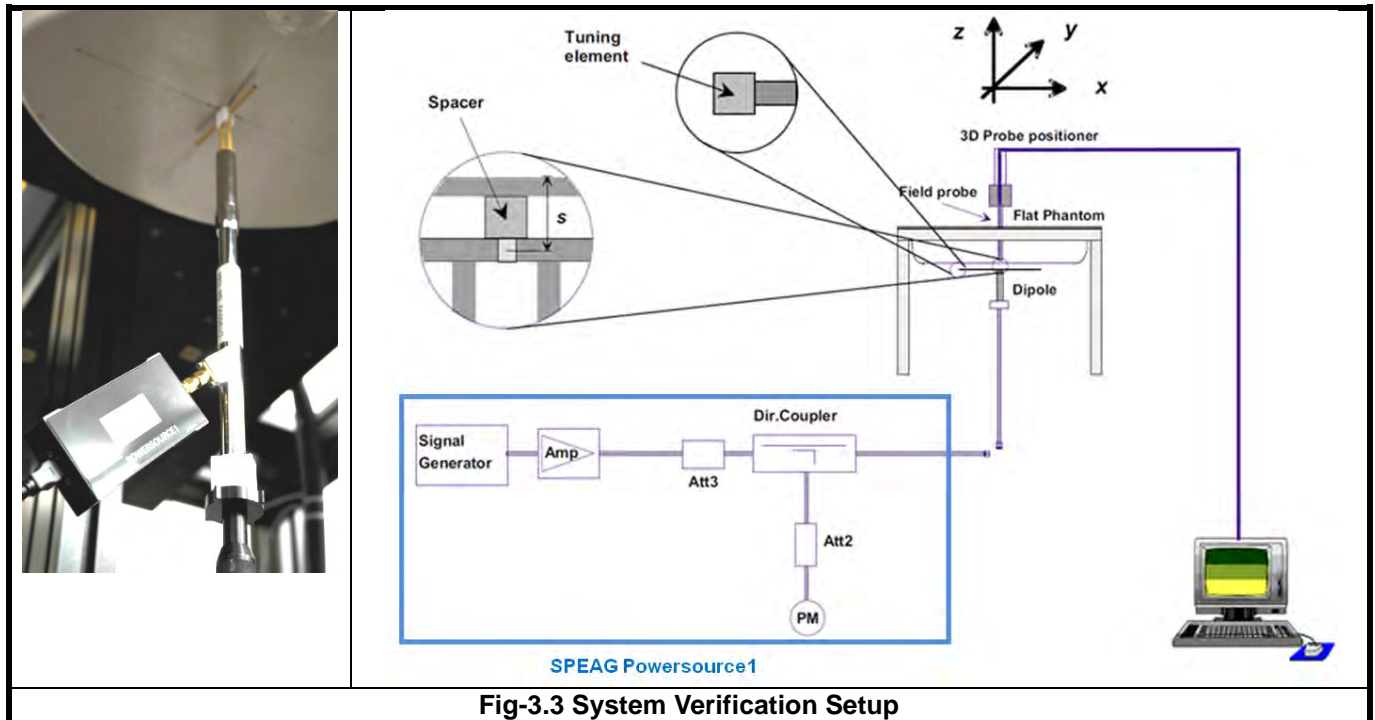
The following table gives the recipes for tissue simulating liquids.

**Table-3.2 Recipes of Tissue Simulating Liquid**

Tissue Type	Bactericide	DGBE	HEC	NaCl	Sucrose	Triton X-100	Water	Diethylene Glycol Mono-hexylether
H750	0.2	-	0.2	1.5	56.0	-	42.1	-
H835	0.2	-	0.2	1.5	57.0	-	41.1	-
H900	0.2	-	0.2	1.4	58.0	-	40.2	-
H1450	-	43.3	-	0.6	-	-	56.1	-
H1640	-	45.8	-	0.5	-	-	53.7	-
H1750	-	47.0	-	0.4	-	-	52.6	-
H1800	-	44.5	-	0.3	-	-	55.2	-
H1900	-	44.5	-	0.2	-	-	55.3	-
H2000	-	44.5	-	0.1	-	-	55.4	-
H2300	-	44.9	-	0.1	-	-	55.0	-
H2450	-	45.0	-	0.1	-	-	54.9	-
H2600	-	45.1	-	0.1	-	-	54.8	-
H3500	-	8.0	-	0.2	-	20.0	71.8	-
H5G	-	-	-	-	-	17.2	65.5	17.3

## 3.3 SAR System Verification

The system check verifies that the system operates within its specifications. It is performed daily or before every SAR measurement. The system check uses normal SAR measurements in the flat section of the phantom with a matched dipole at a specified distance. The system verification setup is shown as below.



**Fig-3.3 System Verification Setup**

The SPEAG Powersource1 is a portable and very stable RF source providing a continuous wave (CW) signal. It is designed for conducting SAR system checks and SAR system validation of DASY and is compatible with IEC 62209-1, IEC 62209-2 and IEEE Std 1528 standards. The Powersource1 has been calibrated by SPEAG's ISO/IEC 17025-accredited calibration center. When using Powersource1, the setup can be simplified, as shown in Fig-3.3. The signal purity is warranted by design. Since the Powersource1 is calibrated, no additional equipment is needed and the Powersource1 can directly be connected to the SMA connector of the dipole without a cable as all separate components (signal generator, amplifier, coupler and power meter) are built into the unit.

The validation dipole is placed beneath the flat phantom with the specific spacer in place. The distance spacer is touch the phantom surface with a light pressure at the reference marking and be oriented parallel to the long side of the phantom. The Powersource1 is adjusted for the desired forward power of 17 dBm at the dipole connector and the RF output power would be turned on. After system check testing, the SAR result will be normalized to 1W forward input power and compared with the reference SAR value derived from validation dipole certificate report. The deviation of system check should be within 10 %.

## 3.4 SAR Measurement Procedure

According to the SAR test standard, the recommended procedure for assessing the peak spatial-average SAR value consists of the following steps:

- Power reference measurement
- Area scan
- Zoom scan
- Power drift measurement

The SAR measurement procedures for each of test conditions are as follows:

- Make EUT to transmit maximum output power
- Measure conducted output power through RF cable
- Place the EUT in the specific position of phantom
- Perform SAR testing steps on the DASY system
- Record the SAR value

### 3.4.1 Area & Zoom Scan Procedure

First Area Scan is used to locate the approximate location(s) of the local peak SAR value(s). The measurement grid within an Area Scan is defined by the grid extent, grid step size and grid offset. Next, in order to determine the EM field distribution in a three-dimensional spatial extension, Zoom Scan is required. The Zoom Scan is performed around the highest E-field value to determine the averaged SAR-distribution over 10 g. According to KDB 865664D01, the resolution for Area and Zoom scan is specified in the table below.

Items	<= 2 GHz	2-3 GHz	3-4 GHz	4-5 GHz	5-6 GHz
Area Scan ( $\Delta x, \Delta y$ )	<= 15 mm	<= 12 mm	<= 12 mm	<= 10 mm	<= 10 mm
Zoom Scan ( $\Delta x, \Delta y$ )	<= 8 mm	<= 5 mm	<= 5 mm	<= 4 mm	<= 4 mm
Zoom Scan ( $\Delta z$ )	<= 5 mm	<= 5 mm	<= 4 mm	<= 3 mm	<= 2 mm
Zoom Scan Volume	>= 30 mm	>= 30 mm	>= 28 mm	>= 25 mm	>= 22 mm

#### Note:

When zoom scan is required and report SAR is <=1.4 W/kg, the zoom scan resolution of  $\Delta x / \Delta y$  (2-3GHz: <= 8 mm, 3-4GHz: <= 7 mm, 4-6GHz: <= 5 mm) may be applied.

### 3.4.2 Volume Scan Procedure

The volume scan is used for assess overlapping SAR distributions for antennas transmitting in different frequency bands. It is equivalent to an oversized zoom scan used in standalone measurements. The measurement volume will be used to enclose all the simultaneous transmitting antennas. For antennas transmitting simultaneously in different frequency bands, the volume scan is measured separately in each frequency band. In order to sum correctly to compute the 1g aggregate SAR, the EUT remain in the same test position for all measurements and all volume scan use the same spatial resolution and grid spacing. When all volume scan were completed, the software, SEMCAD postprocessor can combine and subsequently superpose these measurement data to calculating the multiband SAR.

### 3.4.3 Power Drift Monitoring

All SAR testing is under the EUT install full charged battery and transmit maximum output power. In DASY measurement software, the power reference measurement and power drift measurement procedures are used for monitoring the power drift of EUT during SAR test. Both these procedures measure the field at a specified reference position before and after the SAR testing. The software will calculate the field difference in dB. If the power drift more than 5%, the SAR will be retested.

### 3.4.4 Spatial Peak SAR Evaluation

The procedure for spatial peak SAR evaluation has been implemented according to the test standard. It can be conducted for 1g and 10g, as well as for user-specific masses. The DASY software includes all numerical procedures necessary to evaluate the spatial peak SAR value.

The base for the evaluation is a "cube" measurement. The measured volume must include the 1g and 10g cubes with the highest averaged SAR values. For that purpose, the center of the measured volume is aligned to the interpolated peak SAR value of a previously performed area scan.

The entire evaluation of the spatial peak values is performed within the post-processing engine (SEMCAD). The system always gives the maximum values for the 1g and 10g cubes. The algorithm to find the cube with highest averaged SAR is divided into the following stages:

- (a) Extraction of the measured data (grid and values) from the Zoom Scan
- (b) Calculation of the SAR value at every measurement point based on all stored data (A/D values and measurement parameters)
- (c) Generation of a high-resolution mesh within the measured volume
- (d) Interpolation of all measured values from the measurement grid to the high-resolution grid
- (e) Extrapolation of the entire 3-D field distribution to the phantom surface over the distance from sensor to surface
- (f) Calculation of the averaged SAR within masses of 1g and 10g

### 3.4.5 SAR Averaged Methods

In DASY, the interpolation and extrapolation are both based on the modified Quadratic Shepard's method. The interpolation scheme combines a least-square fitted function method and a weighted average method which are the two basic types of computational interpolation and approximation.

Extrapolation routines are used to obtain SAR values between the lowest measurement points and the inner phantom surface. The extrapolation distance is determined by the surface detection distance and the probe sensor offset. The uncertainty increases with the extrapolation distance. To keep the uncertainty within 1% for the 1 g and 10 g cubes, the extrapolation distance should not be larger than 5 mm.

## 4. SAR Measurement Evaluation

### 4.1 EUT Configuration and Setting

#### <Considerations Related to WLAN for Setup and Testing>

In general, various vendor specific external test software and chipset based internal test modes are typically used for SAR measurement. These chipset based test mode utilities are generally hardware and manufacturer dependent, and often include substantial flexibility to reconfigure or reprogram a device. A Wi-Fi device must be configured to transmit continuously at the required data rate, channel bandwidth and signal modulation, using the highest transmission duty factor supported by the test mode tools for SAR measurement. The test frequencies established using test mode must correspond to the actual channel frequencies. When 802.11 frame gaps are accounted for in the transmission, a maximum transmission duty factor of 92 - 96% is typically achievable in most test mode configurations. A minimum transmission duty factor of 85% is required to avoid certain hardware and device implementation issues related to wide range SAR scaling. In addition, a periodic transmission duty factor is required for current generation SAR systems to measure SAR correctly. The reported SAR must be scaled to 100% transmission duty factor to determine compliance at the maximum tune-up tolerance limit.

According to KDB 248227 D01, this device has installed WLAN engineering testing software which can provide continuous transmitting RF signal. During WLAN SAR testing, this device was operated to transmit continuously at the maximum transmission duty with specified transmission mode, operating frequency, lowest data rate, and maximum output power.

#### Initial Test Configuration

An initial test configuration is determined for OFDM transmission modes in 2.4 GHz and 5 GHz bands according to the channel bandwidth, modulation and data rate combination(s) with the highest maximum output power specified for production units in each standalone and aggregated frequency band. When the same maximum power is specified for multiple transmission modes in a frequency band, the largest channel bandwidth, lowest order modulation, lowest data rate and lowest order 802.11a/g/n/ac mode is used for SAR measurement, on the highest measured output power channel in the initial test configuration, for each frequency band.

#### Subsequent Test Configuration

SAR measurement requirements for the remaining 802.11 transmission mode configurations that have not been tested in the initial test configuration are determined separately for each standalone and aggregated frequency band, in each exposure condition, according to the maximum output power specified for production units. Additional power measurements may be required to determine if SAR measurements are required for subsequent highest output power channels in a subsequent test configuration. When the highest reported SAR for the initial test configuration according to the initial test position or fixed exposure position requirements, is adjusted by the ratio of the subsequent test configuration to initial test configuration specified maximum output power and the adjusted SAR is  $\leq 1.2$  W/kg, SAR is not required for that subsequent test configuration.

### SAR Test Configuration and Channel Selection

When multiple channel bandwidth configurations in a frequency band have the same specified maximum output power, the initial test configuration is using largest channel bandwidth, lowest order modulation, lowest data rate, and lowest order 802.11 mode (i.e., 802.11a is chosen over 802.11n then 802.11ac or 802.11g is chosen over 802.11n). After an initial test configuration is determined, if multiple test channels have the same measured maximum output power, the channel chosen for SAR measurement is determined according to the following.

- 1) The channel closest to mid-band frequency is selected for SAR measurement.
- 2) For channels with equal separation from mid-band frequency; for example, high and low channels or two mid-band channels, the higher frequency (number) channel is selected for SAR measurement.

### Test Reduction for U-NII-1 (5.2 GHz) and U-NII-2A (5.3 GHz) Bands

For devices that operate in both U-NII bands using the same transmitter and antenna(s), SAR test reduction is determined according to the following.

- 1) When the same maximum output power is specified for both bands, begin SAR measurement in U-NII-2A band by applying the OFDM SAR requirements. If the highest reported SAR for a test configuration is  $\leq 1.2$  W/kg, SAR is not required for U-NII-1 band for that configuration (802.11 mode and exposure condition).
- 2) When different maximum output power is specified for the bands, begin SAR measurement in the band with higher specified maximum output power. The highest reported SAR for the tested configuration is adjusted by the ratio of lower to higher specified maximum output power for the two bands. When the adjusted SAR is  $\leq 1.2$  W/kg, SAR is not required for the band with lower maximum output power in that test configuration.

### <Considerations Related to Bluetooth for Setup and Testing>

This device has installed Bluetooth engineering testing software which can provide continuous transmitting RF signal. During Bluetooth SAR testing, this device was operated to transmit continuously at the maximum transmission duty with specified transmission mode, operating frequency, lowest data rate, and maximum output power.

## FCC SAR Test Report

The Bluetooth call box has been used during SAR measurement and the EUT was set to DH5 mode at the maximum output power. Its duty factor was calculated as below and the measured SAR for Bluetooth would be scaled to the 100% transmission duty factor to determine compliance.



Time-domain plot for Bluetooth transmission signal

The duty factor of Bluetooth signal has been calculated as following.

$$\text{Duty Factor} = \text{Pulse Width} / \text{Total Period} = (8.582 \text{ ms} - 5.614 \text{ ms}) / (10.54 \text{ ms} - 5.614 \text{ ms}) = 60.3 \%$$

## 4.2 EUT Testing Position

### 4.2.1 Body Exposure Conditions

SAR evaluation was tested in six positions. It is the Front Face, Rear Face, Left Side, Right Side, Top Side, and Bottom Side of WLAN antenna. In these positions, the air gap between the WLAN antenna and the phantom is 5 mm.

## FCC SAR Test Report

### 4.3 Tissue Verification

The measuring results for tissue simulating liquid are shown as below.

Frequency (MHz)	Liquid Temp. (°C)	Measured Conductivity ( $\sigma$ )	Measured Permittivity ( $\epsilon_r$ )	Target Conductivity ( $\sigma$ )	Target Permittivity ( $\epsilon_r$ )	Conductivity Deviation (%)	Permittivity Deviation (%)	Test Date
2450	23.3	1.852	38.607	1.8	39.2	2.89	-1.51	Oct. 25, 2019
2450	23.2	1.824	38.456	1.8	39.2	1.33	-1.90	Nov. 04, 2019
2450	23.2	1.866	38.343	1.8	39.2	3.67	-2.19	Nov. 05, 2019
5250	23.3	4.604	35.76	4.71	35.9	-2.25	-0.39	Oct. 29, 2019
5250	23.2	4.693	37.651	4.71	35.9	-0.36	4.88	Nov. 06, 2019
5600	23.3	4.966	35.251	5.07	35.5	-2.05	-0.70	Oct. 29, 2019
5600	23.5	5.031	37.232	5.07	35.5	-0.77	4.88	Nov. 06, 2019
5600	23.5	5.124	35.657	5.07	35.5	1.07	0.44	Nov. 07, 2019
5750	23.3	5.33	35.546	5.22	35.4	2.11	0.41	Oct. 28, 2019
5750	23.6	5.121	36.517	5.22	35.4	-1.90	3.16	Nov. 08, 2019

#### Note:

The dielectric properties of the tissue simulating liquid have been measured within 24 hours before the SAR testing and within  $\pm 10\%$  of the target values. Liquid temperature during the SAR testing has kept within  $\pm 2^\circ\text{C}$ .

### 4.4 System Validation

The SAR measurement system was validated according to procedures in KDB 865664 D01. The validation status in tabulated summary is as below.

Test Date	Probe S/N	Calibration Point	Measured Conductivity ( $\sigma$ )	Measured Permittivity ( $\epsilon_r$ )	Validation for CW			Validation for Modulation		
					Sensitivity Range	Probe Linearity	Probe Isotropy	Modulation Type	Duty Factor	PAR
Oct. 25, 2019	7375	2450	1.852	38.607	Pass	Pass	Pass	OFDM	N/A	Pass
Nov. 04, 2019	7472	2450	1.824	38.456	Pass	Pass	Pass	OFDM	N/A	Pass
Nov. 05, 2019	7472	2450	1.866	38.343	Pass	Pass	Pass	OFDM	N/A	Pass
Oct. 29, 2019	7472	5250	4.604	35.76	Pass	Pass	Pass	OFDM	N/A	Pass
Nov. 06, 2019	7472	5250	4.693	37.651	Pass	Pass	Pass	OFDM	N/A	Pass
Oct. 29, 2019	7472	5600	4.966	35.251	Pass	Pass	Pass	OFDM	N/A	Pass
Nov. 06, 2019	7472	5600	5.031	37.232	Pass	Pass	Pass	OFDM	N/A	Pass
Nov. 07, 2019	7472	5600	5.124	35.657	Pass	Pass	Pass	OFDM	N/A	Pass
Oct. 28, 2019	7537	5750	5.33	35.546	Pass	Pass	Pass	OFDM	N/A	Pass
Nov. 08, 2019	7472	5750	5.121	36.517	Pass	Pass	Pass	OFDM	N/A	Pass

## FCC SAR Test Report

### 4.5 System Verification

The measuring result for system verification is tabulated as below.

Test Date	Frequency (MHz)	1W Target SAR-1g (W/kg)	Measured SAR-1g (W/kg)	Normalized to 1W SAR-1g (W/kg)	Deviation (%)	Dipole S/N	Probe S/N	DAE S/N
Oct. 25, 2019	2450	52.70	13.6	54.40	3.23	737	7375	1277
Nov. 04, 2019	2450	52.70	13.2	52.80	0.19	737	7472	579
Nov. 05, 2019	2450	52.70	12.9	51.60	-2.09	737	7472	579
Oct. 29, 2019	5250	80.70	8.66	86.60	7.31	1019	7472	579
Nov. 06, 2019	5250	80.70	8.55	85.50	5.95	1019	7472	579
Oct. 29, 2019	5600	85.80	8.36	83.60	-2.56	1019	7472	579
Nov. 06, 2019	5600	85.80	8.39	83.90	-2.21	1019	7472	579
Nov. 07, 2019	5600	85.80	8.42	84.20	-1.86	1019	7472	579
Oct. 28, 2019	5750	81.50	7.66	76.60	-6.01	1019	7537	1585
Nov. 08, 2019	5750	81.50	7.68	76.80	-5.77	1019	7472	579

**Note:**

Comparing to the reference SAR value provided by SPEAG in dipole calibration certificate, the deviation of system check results is within its specification of 10 %. The result indicates the system check can meet the variation criterion and the plots please refer to Appendix A of this report.

# FCC SAR Test Report

## 4.6 Maximum Output Power

### 4.6.1 Maximum Target Conducted Power

The maximum conducted average power (Unit: dBm) including tune-up tolerance is shown as below.

#### <WLAN 2.4G>

Mode	Channel	Frequency (MHz)	Tune-up Power (Ant-0)	Tune-up Power (Ant-1)	Tune-up Power (Ant-0 + Ant-1)
802.11b	1	2412	12.0	12.0	15.0
	6	2437	12.0	12.0	15.0
	11	2462	12.0	12.0	15.0
802.11g	1	2412	12.0	12.0	15.0
	6	2437	12.0	12.0	15.0
	11	2462	12.0	12.0	15.0
802.11n (HT20)	1	2412	12.0	12.0	15.0
	6	2437	12.0	12.0	15.0
	11	2462	12.0	12.0	15.0
802.11n (HT40)	3	2422	12.0	12.0	15.0
	6	2437	12.0	12.0	15.0
	9	2452	12.0	12.0	15.0
802.11ac (VHT20)	1	2412	12.0	12.0	15.0
	6	2437	12.0	12.0	15.0
	11	2462	12.0	12.0	15.0
802.11ac (VHT40)	3	2422	12.0	12.0	15.0
	6	2437	12.0	12.0	15.0
	9	2452	12.0	12.0	15.0

# FCC SAR Test Report

## <WLAN 5.2G>

Mode	Channel	Frequency (MHz)	Tune-up Power (Ant-0)	Tune-up Power (Ant-1)	Tune-up Power (Ant-0 + Ant-1)
802.11a	36	5180	10.5	10.5	13.5
	40	5200	10.5	10.5	13.5
	44	5220	10.5	10.5	13.5
	48	5240	10.5	10.5	13.5
802.11n (HT20)	36	5180	10.5	10.5	13.5
	40	5200	10.5	10.5	13.5
	44	5220	10.5	10.5	13.5
	48	5240	10.5	10.5	13.5
802.11n (HT40)	38	5190	10.5	10.5	13.5
	46	5230	10.5	10.5	13.5
802.11ac (VHT20)	36	5180	10.5	10.5	13.5
	40	5200	10.5	10.5	13.5
	44	5220	10.5	10.5	13.5
	48	5240	10.5	10.5	13.5
802.11ac (VHT40)	38	5190	10.5	10.5	13.5
	46	5230	10.5	10.5	13.5
802.11ac (VHT80)	42	5210	10.5	10.5	13.5

## <WLAN 5.3G>

Mode	Channel	Frequency (MHz)	Tune-up Power (Ant-0)	Tune-up Power (Ant-1)	Tune-up Power (Ant-0 + Ant-1)
802.11a	52	5260	10.5	10.5	13.5
	56	5280	10.5	10.5	13.5
	60	5300	10.5	10.5	13.5
	64	5320	10.5	10.5	13.5
802.11n (HT20)	52	5260	10.5	10.5	13.5
	56	5280	10.5	10.5	13.5
	60	5300	10.5	10.5	13.5
	64	5320	10.5	10.5	13.5
802.11n (HT40)	54	5270	10.5	10.5	13.5
	62	5310	10.5	10.5	13.5
802.11ac (VHT20)	52	5260	10.5	10.5	13.5
	56	5280	10.5	10.5	13.5
	60	5300	10.5	10.5	13.5
	64	5320	10.5	10.5	13.5
802.11ac (VHT40)	54	5270	10.5	10.5	13.5
	62	5310	10.5	10.5	13.5
802.11ac (VHT80)	58	5290	10.5	10.5	13.5

## FCC SAR Test Report

### <WLAN 5.6G>

Mode	Channel	Frequency (MHz)	Tune-up Power (Ant-0)	Tune-up Power (Ant-1)	Tune-up Power (Ant-0 + Ant-1)
802.11a	100	5500	10.5	10.5	13.5
	116	5580	10.5	10.5	13.5
	120	5600	10.5	10.5	13.5
	124	5620	10.5	10.5	13.5
	132	5660	10.5	10.5	13.5
	140	5700	10.5	10.5	13.5
	144	5720	10.5	10.5	13.5
802.11n (HT20)	100	5500	10.5	10.5	13.5
	116	5580	10.5	10.5	13.5
	120	5600	10.5	10.5	13.5
	124	5620	10.5	10.5	13.5
	132	5660	10.5	10.5	13.5
	140	5700	10.5	10.5	13.5
	144	5720	10.5	10.5	13.5
802.11n (HT40)	102	5510	10.5	10.5	13.5
	110	5550	10.5	10.5	13.5
	118	5590	10.5	10.5	13.5
	126	5630	10.5	10.5	13.5
	134	5670	10.5	10.5	13.5
	142	5710	10.5	10.5	13.5
802.11ac (VHT20)	100	5500	10.5	10.5	13.5
	116	5580	10.5	10.5	13.5
	120	5600	10.5	10.5	13.5
	124	5620	10.5	10.5	13.5
	132	5660	10.5	10.5	13.5
	140	5700	10.5	10.5	13.5
	144	5720	10.5	10.5	13.5
802.11ac (VHT40)	102	5510	10.5	10.5	13.5
	110	5550	10.5	10.5	13.5
	118	5590	10.5	10.5	13.5
	126	5630	10.5	10.5	13.5
	134	5670	10.5	10.5	13.5
	142	5710	10.5	10.5	13.5
802.11ac (VHT80)	106	5530	10.5	10.5	13.5
	122	5610	10.5	10.5	13.5
	138	5690	10.5	10.5	13.5

## FCC SAR Test Report

### <WLAN 5.8G>

Mode	Channel	Frequency (MHz)	Tune-up Power (Ant-0)	Tune-up Power (Ant-1)	Tune-up Power (Ant-0 + Ant-1)
802.11a	149	5745	10.5	10.5	13.5
	153	5765	10.5	10.5	13.5
	157	5785	10.5	10.5	13.5
	161	5805	10.5	10.5	13.5
	165	5825	10.5	10.5	13.5
802.11n (HT20)	149	5745	10.5	10.5	13.5
	153	5765	10.5	10.5	13.5
	157	5785	10.5	10.5	13.5
	161	5805	10.5	10.5	13.5
	165	5825	10.5	10.5	13.5
802.11n (HT40)	151	5755	10.5	10.5	13.5
	159	5795	10.5	10.5	13.5
802.11ac (VHT20)	149	5745	10.5	10.5	13.5
	153	5765	10.5	10.5	13.5
	157	5785	10.5	10.5	13.5
	161	5805	10.5	10.5	13.5
	165	5825	10.5	10.5	13.5
802.11ac (VHT40)	151	5755	10.5	10.5	13.5
	159	5795	10.5	10.5	13.5
802.11ac (VHT80)	155	5775	10.5	10.5	13.5

### <Bluetooth>

Mode	Channel	Frequency (MHz)	Tune-up Power
Bluetooth BDR	0	2402	7.5
	39	2441	7.5
	78	2480	7.5
Bluetooth LE	0	2402	7.5
	19	2440	7.5
	39	2480	7.5

## FCC SAR Test Report

### 4.6.2 Measured Conducted Power Result

The measuring conducted average power (Unit: dBm) is shown as below.

#### <WLAN 2.4G>

Mode	Channel	Frequency (MHz)	Average Power (Ant-0)	Average Power (Ant-1)	Average Power (Ant-0 + Ant-1)
802.11b	1	2412	11.83	11.81	14.51
	6	2437	11.81	11.96	14.64
	11	2462	11.98	11.97	14.73

#### <WLAN 5.3G>

Mode	Channel	Frequency (MHz)	Average Power (Ant-0)	Average Power (Ant-1)	Average Power (Ant-0 + Ant-1)
802.11ac (VHT80)	58	5290	10.47	10.43	12.83

#### <WLAN 5.6G>

Mode	Channel	Frequency (MHz)	Average Power (Ant-0)	Average Power (Ant-1)	Average Power (Ant-0 + Ant-1)
802.11ac (VHT80)	106	5530	10.37	10.41	13.13
	122	5610	10.33	10.36	13.07
	138	5690	10.43	10.43	13.18

#### <WLAN 5.8G>

Mode	Channel	Frequency (MHz)	Average Power (Ant-0)	Average Power (Ant-1)	Average Power (Ant-0 + Ant-1)
802.11ac (VHT80)	155	5775	10.46	10.38	12.96

#### <Bluetooth EDR>

Mode	Channel	Frequency (MHz)	Average Power
Bluetooth BDR	0	2402	6.14
	39	2441	6.27
	78	2480	6.01

#### <Bluetooth LE>

Mode	Channel	Frequency (MHz)	Average Power
Bluetooth LE	0	2402	6.10
	19	2440	6.03
	39	2480	6.10

## **4.7 SAR Testing Results**

### **4.7.1 SAR Test Reduction Considerations**

#### **<KDB 447498 D01, General RF Exposure Guidance>**

Testing of other required channels within the operating mode of a frequency band is not required when the reported SAR for the mid-band or highest output power channel is:

- (1)  $\leq 0.8$  W/kg or 2.0 W/kg, for 1-g or 10-g respectively, when the transmission band is  $\leq 100$  MHz
- (2)  $\leq 0.6$  W/kg or 1.5 W/kg, for 1-g or 10-g respectively, when the transmission band is between 100 MHz and 200 MHz
- (3)  $\leq 0.4$  W/kg or 1.0 W/kg, for 1-g or 10-g respectively, when the transmission band is  $\geq 200$  MHz

When SAR is not measured at the maximum power level allowed for production units, the measured SAR will be scaled to the maximum tune-up tolerance limit to determine compliance. The scaling factor for the tune-up power is defined as maximum tune-up limit (mW) / measured conducted power (mW). The reported SAR would be calculated by measured SAR x tune-up power scaling factor.

The SAR has been measured with highest transmission duty factor supported by the test mode tools for WLAN and/or Bluetooth. When the transmission duty factor could not achieve 100%, the reported SAR will be scaled to 100% transmission duty factor to determine compliance at the maximum tune-up power. The scaling factor for the duty factor is defined as 100% / transmission duty cycle (%). The reported SAR would be calculated by measured SAR x tune-up power scaling factor x duty cycle scaling factor.

#### **<KDB 248227 D01, SAR Guidance for Wi-Fi Transmitters>**

- (1) For handsets operating next to ear, hotspot mode or mini-tablet configurations, the initial test position procedures were applied. The test position with the highest extrapolated peak SAR will be used as the initial test position. When the reported SAR of initial test position is  $\leq 0.4$  W/kg, SAR testing for remaining test positions is not required. Otherwise, SAR is evaluated at the subsequent highest peak SAR positions until the reported SAR result is  $\leq 0.8$  W/kg or all test positions are measured.
- (2) For WLAN 2.4 GHz, the highest measured maximum output power channel for DSSS was selected for SAR measurement. When the reported SAR is  $\leq 0.8$  W/kg, no further SAR testing is required. Otherwise, SAR is evaluated at the next highest measured output power channel. When any reported SAR is  $> 1.2$  W/kg, SAR is required for the third channel. For OFDM modes (802.11g/n), SAR is not required when the highest reported SAR for DSSS is adjusted by the ratio of OFDM to DSSS specified maximum output power and it is  $\leq 1.2$  W/kg.
- (3) For WLAN 5GHz, the initial test configuration was selected according to the transmission mode with the highest maximum output power. When the reported SAR of initial test configuration is  $> 0.8$  W/kg, SAR is required for the subsequent highest measured output power channel until the reported SAR result is  $\leq 1.2$  W/kg or all required channels are measured. For other transmission modes, SAR is not required when the highest reported SAR for initial test configuration is adjusted by the ratio of subsequent test configuration to initial test configuration specified maximum output power and it is  $\leq 1.2$  W/kg.

## FCC SAR Test Report

- (4) For WLAN MIMO mode, the power-based standalone SAR test exclusion or the sum of SAR provision in KDB 447498 to determine simultaneous transmission SAR test exclusion should be applied. Otherwise, SAR for MIMO mode will be measured with all applicable antennas transmitting simultaneously at the specified maximum output power of MIMO operation.

### 4.7.2 SAR Results for Body Exposure Condition (Test Separation Distance is 5 mm)

Plot No.	Band	Mode	Test Position	Ch.	Sample	TX Antenna	Duty Cycle	Crest Factor	Max. Tune-up Power (dBm)	Measured Conducted Power (dBm)	Scaling Factor	Power Drift (dB)	Measured SAR-1g (W/kg)	Scaled SAR-1g (W/kg)
	WLAN2.4G	802.11b	Front Face	11	1	Ant 0	99.90	1.00	12.0	11.98	1.00	-0.08	0.218	0.22
	WLAN2.4G	802.11b	Rear Face	11	1	Ant 0	99.90	1.00	12.0	11.98	1.00	0.02	0.112	0.11
	WLAN2.4G	802.11b	Left Side	11	1	Ant 0	99.90	1.00	12.0	11.98	1.00	0.01	0.254	0.25
	WLAN2.4G	802.11b	Right Side	11	1	Ant 0	99.90	1.00	12.0	11.98	1.00	0.07	0.266	0.27
	WLAN2.4G	802.11b	Top Side	11	1	Ant 0	99.90	1.00	12.0	11.98	1.00	-0.15	0.259	0.26
	WLAN2.4G	802.11b	Bottom Side	11	1	Ant 0	99.90	1.00	12.0	11.98	1.00	0.03	0.319	0.32
	WLAN2.4G	802.11b	Front Face	11	1	Ant 1	99.90	1.00	12.0	11.97	1.01	-0.02	0.159	0.16
	WLAN2.4G	802.11b	Rear Face	11	1	Ant 1	99.90	1.00	12.0	11.97	1.01	0.01	0.097	0.10
	WLAN2.4G	802.11b	Left Side	11	1	Ant 1	99.90	1.00	12.0	11.97	1.01	-0.14	0.248	0.25
	WLAN2.4G	802.11b	Right Side	11	1	Ant 1	99.90	1.00	12.0	11.97	1.01	-0.08	0.249	0.25
	WLAN2.4G	802.11b	Top Side	11	1	Ant 1	99.90	1.00	12.0	11.97	1.01	0.06	0.246	0.25
	WLAN2.4G	802.11b	Bottom Side	11	1	Ant 1	99.90	1.00	12.0	11.97	1.01	0.01	0.257	0.26
	WLAN2.4G	802.11b	Front Face	11	1	Ant 0+1	99.90	1.00	15.0	14.73	1.06	0.11	0.148	0.16
	WLAN2.4G	802.11b	Rear Face	11	1	Ant 0+1	99.90	1.00	15.0	14.73	1.06	-0.05	0.099	0.10
	WLAN2.4G	802.11b	Left Side	11	1	Ant 0+1	99.90	1.00	15.0	14.73	1.06	0.03	0.264	0.28
	WLAN2.4G	802.11b	Right Side	11	1	Ant 0+1	99.90	1.00	15.0	14.73	1.06	0.07	0.301	0.32
	WLAN2.4G	802.11b	Top Side	11	1	Ant 0+1	99.90	1.00	15.0	14.73	1.06	0.12	0.248	0.26
01	WLAN2.4G	802.11b	Bottom Side	11	1	Ant 0+1	99.90	1.00	15.0	14.73	1.06	-0.06	0.308	0.33
	WLAN2.4G	802.11b	Bottom Side	1	1	Ant 0+1	99.90	1.00	15.0	14.51	1.12	0.05	0.209	0.23
	WLAN2.4G	802.11b	Bottom Side	6	1	Ant 0+1	99.90	1.00	15.0	14.64	1.09	0.01	0.218	0.24
	WLAN2.4G	802.11b	Bottom Side	11	2	Ant 0+1	99.90	1.00	15.0	14.73	1.06	-0.06	0.296	0.31
	WLAN5.3G	802.11ac VHT80	Front Face	58	1	Ant 0	99.90	1.00	10.5	10.47	1.01	0.08	0.244	0.25
	WLAN5.3G	802.11ac VHT80	Rear Face	58	1	Ant 0	99.90	1.00	10.5	10.47	1.01	0.01	0.151	0.15
	WLAN5.3G	802.11ac VHT80	Left Side	58	1	Ant 0	99.90	1.00	10.5	10.47	1.01	-0.09	0.292	0.29
	WLAN5.3G	802.11ac VHT80	Right Side	58	1	Ant 0	99.90	1.00	10.5	10.47	1.01	-0.07	0.122	0.12
	WLAN5.3G	802.11ac VHT80	Top Side	58	1	Ant 0	99.90	1.00	10.5	10.47	1.01	0.03	0.161	0.16
	WLAN5.3G	802.11ac VHT80	Bottom Side	58	1	Ant 0	99.90	1.00	10.5	10.47	1.01	-0.01	0.251	0.25
	WLAN5.3G	802.11ac VHT80	Front Face	58	1	Ant 1	99.90	1.00	10.5	10.43	1.02	0.02	0.157	0.16
	WLAN5.3G	802.11ac VHT80	Rear Face	58	1	Ant 1	99.90	1.00	10.5	10.43	1.02	0.04	0.141	0.14
	WLAN5.3G	802.11ac VHT80	Left Side	58	1	Ant 1	99.90	1.00	10.5	10.43	1.02	-0.08	0.310	0.32
	WLAN5.3G	802.11ac VHT80	Right Side	58	1	Ant 1	99.90	1.00	10.5	10.43	1.02	-0.06	0.053	0.05
	WLAN5.3G	802.11ac VHT80	Top Side	58	1	Ant 1	99.90	1.00	10.5	10.43	1.02	0.05	0.155	0.16
	WLAN5.3G	802.11ac VHT80	Bottom Side	58	1	Ant 1	99.90	1.00	10.5	10.43	1.02	-0.03	0.294	0.30
	WLAN5.3G	802.11ac VHT80	Front Face	58	1	Ant 0+1	99.90	1.00	13.5	12.83	1.17	-0.11	0.151	0.18
	WLAN5.3G	802.11ac VHT80	Rear Face	58	1	Ant 0+1	99.90	1.00	13.5	12.83	1.17	0.05	0.162	0.19
02	WLAN5.3G	802.11ac VHT80	Left Side	58	1	Ant 0+1	99.90	1.00	13.5	12.83	1.17	-0.12	0.361	0.42
	WLAN5.3G	802.11ac VHT80	Right Side	58	1	Ant 0+1	99.90	1.00	13.5	12.83	1.17	0.12	0.085	0.10
	WLAN5.3G	802.11ac VHT80	Top Side	58	1	Ant 0+1	99.90	1.00	13.5	12.83	1.17	0.08	0.228	0.27
	WLAN5.3G	802.11ac VHT80	Bottom Side	58	1	Ant 0+1	99.90	1.00	13.5	12.83	1.17	-0.06	0.334	0.39
	WLAN5.3G	802.11ac VHT80	Left Side	58	2	Ant 0+1	99.90	1.00	13.5	12.83	1.17	-0.12	0.337	0.39

# FCC SAR Test Report

Plot No.	Band	Mode	Test Position	Ch.	Sample	TX Antenna	Duty Cycle	Crest Factor	Max. Tune-up Power (dBm)	Measured Conducted Power (dBm)	Scaling Factor	Power Drift (dB)	Measured SAR-1g (W/kg)	Scaled SAR-1g (W/kg)
	WLAN5.6G	802.11ac VHT80	Front Face	138	1	Ant 0	99.90	1.00	10.5	10.43	1.02	0.02	0.501	0.51
	WLAN5.6G	802.11ac VHT80	Rear Face	138	1	Ant 0	99.90	1.00	10.5	10.43	1.02	0.07	0.403	0.41
	WLAN5.6G	802.11ac VHT80	Left Side	138	1	Ant 0	99.90	1.00	10.5	10.43	1.02	-0.06	0.600	0.61
	WLAN5.6G	802.11ac VHT80	Right Side	138	1	Ant 0	99.90	1.00	10.5	10.43	1.02	-0.15	0.251	0.26
	WLAN5.6G	802.11ac VHT80	Top Side	138	1	Ant 0	99.90	1.00	10.5	10.43	1.02	0.03	0.331	0.34
	WLAN5.6G	802.11ac VHT80	Bottom Side	138	1	Ant 0	99.90	1.00	10.5	10.43	1.02	-0.10	0.515	0.53
	WLAN5.6G	802.11ac VHT80	Front Face	138	1	Ant 1	99.90	1.00	10.5	10.43	1.02	-0.08	0.291	0.30
	WLAN5.6G	802.11ac VHT80	Rear Face	138	1	Ant 1	99.90	1.00	10.5	10.43	1.02	0.15	0.284	0.29
	WLAN5.6G	802.11ac VHT80	Left Side	138	1	Ant 1	99.90	1.00	10.5	10.43	1.02	-0.05	0.575	0.59
	WLAN5.6G	802.11ac VHT80	Right Side	138	1	Ant 1	99.90	1.00	10.5	10.43	1.02	0.04	0.098	0.10
	WLAN5.6G	802.11ac VHT80	Top Side	138	1	Ant 1	99.90	1.00	10.5	10.43	1.02	0.10	0.287	0.29
	WLAN5.6G	802.11ac VHT80	Bottom Side	138	1	Ant 1	99.90	1.00	10.5	10.43	1.02	-0.12	0.545	0.56
	WLAN5.6G	802.11ac VHT80	Front Face	138	1	Ant 0+1	99.90	1.00	13.5	13.18	1.08	-0.01	0.248	0.27
	WLAN5.6G	802.11ac VHT80	Rear Face	138	1	Ant 0+1	99.90	1.00	13.5	13.18	1.08	0.19	0.255	0.28
03	WLAN5.6G	802.11ac VHT80	Left Side	138	1	Ant 0+1	99.90	1.00	13.5	13.18	1.08	-0.03	0.597	0.64
	WLAN5.6G	802.11ac VHT80	Right Side	138	1	Ant 0+1	99.90	1.00	13.5	13.18	1.08	-0.02	0.141	0.15
	WLAN5.6G	802.11ac VHT80	Top Side	138	1	Ant 0+1	99.90	1.00	13.5	13.18	1.08	0.07	0.377	0.41
	WLAN5.6G	802.11ac VHT80	Bottom Side	138	1	Ant 0+1	99.90	1.00	13.5	13.18	1.08	0.03	0.553	0.60
	WLAN5.6G	802.11ac VHT80	Left Side	106	1	Ant 0+1	99.90	1.00	13.5	13.13	1.09	-0.08	0.574	0.63
	WLAN5.6G	802.11ac VHT80	Left Side	122	1	Ant 0+1	99.90	1.00	13.5	13.07	1.10	0.03	0.564	0.62
	WLAN5.6G	802.11ac VHT80	Left Side	138	2	Ant 0+1	99.90	1.00	13.5	13.18	1.08	-0.03	0.584	0.63
	WLAN5.8G	802.11ac VHT80	Front Face	155	1	Ant 0	99.90	1.00	10.5	10.46	1.01	-0.10	0.272	0.27
	WLAN5.8G	802.11ac VHT80	Rear Face	155	1	Ant 0	99.90	1.00	10.5	10.46	1.01	0.06	0.254	0.26
	WLAN5.8G	802.11ac VHT80	Left Side	155	1	Ant 0	99.90	1.00	10.5	10.46	1.01	-0.16	0.421	0.43
	WLAN5.8G	802.11ac VHT80	Right Side	155	1	Ant 0	99.90	1.00	10.5	10.46	1.01	0.03	0.176	0.18
	WLAN5.8G	802.11ac VHT80	Top Side	155	1	Ant 0	99.90	1.00	10.5	10.46	1.01	0.01	0.232	0.23
	WLAN5.8G	802.11ac VHT80	Bottom Side	155	1	Ant 0	99.90	1.00	10.5	10.46	1.01	-0.08	0.361	0.36
	WLAN5.8G	802.11ac VHT80	Front Face	155	1	Ant 1	99.90	1.00	10.5	10.38	1.03	0.02	0.221	0.23
	WLAN5.8G	802.11ac VHT80	Rear Face	155	1	Ant 1	99.90	1.00	10.5	10.38	1.03	0.07	0.196	0.20
	WLAN5.8G	802.11ac VHT80	Left Side	155	1	Ant 1	99.90	1.00	10.5	10.38	1.03	-0.01	0.438	0.45
	WLAN5.8G	802.11ac VHT80	Right Side	155	1	Ant 1	99.90	1.00	10.5	10.38	1.03	-0.09	0.075	0.08
	WLAN5.8G	802.11ac VHT80	Top Side	155	1	Ant 1	99.90	1.00	10.5	10.38	1.03	0.11	0.219	0.23
	WLAN5.8G	802.11ac VHT80	Bottom Side	155	1	Ant 1	99.90	1.00	10.5	10.38	1.03	0.02	0.415	0.43
	WLAN5.8G	802.11ac VHT80	Front Face	155	1	Ant 0+1	99.90	1.00	13.5	12.96	1.13	-0.03	0.289	0.33
	WLAN5.8G	802.11ac VHT80	Rear Face	155	1	Ant 0+1	99.90	1.00	13.5	12.96	1.13	0.06	0.248	0.28
04	WLAN5.8G	802.11ac VHT80	Left Side	155	1	Ant 0+1	99.90	1.00	13.5	12.96	1.13	0.03	0.696	0.79
	WLAN5.8G	802.11ac VHT80	Right Side	155	1	Ant 0+1	99.90	1.00	13.5	12.96	1.13	-0.09	0.165	0.19
	WLAN5.8G	802.11ac VHT80	Top Side	155	1	Ant 0+1	99.90	1.00	13.5	12.96	1.13	0.13	0.441	0.50
	WLAN5.8G	802.11ac VHT80	Bottom Side	155	1	Ant 0+1	99.90	1.00	13.5	12.96	1.13	0.05	0.643	0.73
	WLAN5.8G	802.11ac VHT80	Left Side	155	2	Ant 0+1	99.90	1.00	13.5	12.96	1.13	0.03	0.674	0.76
	BT	BDR	Front Face	39	1	Ant 0	60.30	1.66	7.5	6.27	1.33	0.08	0.038	0.08
	BT	BDR	Rear Face	39	1	Ant 0	60.30	1.66	7.5	6.27	1.33	0.03	0.019	0.04
	BT	BDR	Left Side	39	1	Ant 0	60.30	1.66	7.5	6.27	1.33	-0.11	0.043	0.09
	BT	BDR	Right Side	39	1	Ant 0	60.30	1.66	7.5	6.27	1.33	0.05	0.046	0.10
	BT	BDR	Top Side	39	1	Ant 0	60.30	1.66	7.5	6.27	1.33	-0.07	0.045	0.10
05	BT	BDR	Bottom Side	39	1	Ant 0	60.30	1.66	7.5	6.27	1.33	-0.01	0.055	0.12
	BT	BDR	Bottom Side	0	1	Ant 0	60.30	1.66	7.5	6.14	1.37	0.01	0.049	0.11
	BT	BDR	Bottom Side	78	1	Ant 0	60.30	1.66	7.5	6.01	1.41	0.09	0.050	0.12
	BT	BDR	Bottom Side	39	2	Ant 0	60.30	1.66	7.5	6.27	1.33	-0.01	0.049	0.11

### 4.7.3 SAR Measurement Variability

According to KDB 865664 D01, SAR measurement variability was assessed for each frequency band, which is determined by the SAR probe calibration point and tissue-equivalent medium used for the device measurements. When both head and body tissue-equivalent media are required for SAR measurements in a frequency band, the variability measurement procedures should be applied to the tissue medium with the highest measured SAR, using the highest measured SAR configuration for that tissue-equivalent medium. Alternatively, if the highest measured SAR for both head and body tissue-equivalent media are  $\leq 1.45$  W/kg and the ratio of these highest SAR values, i.e., largest divided by smallest value, is  $\leq 1.10$ , the highest SAR configuration for either head or body tissue-equivalent medium may be used to perform the repeated measurement. These additional measurements are repeated after the completion of all measurements requiring the same head or body tissue-equivalent medium in a frequency band. The test device should be returned to ambient conditions (normal room temperature) with the battery fully charged before it is re-mounted on the device holder for the repeated measurement(s) to minimize any unexpected variations in the repeated results.

Since all the measured SAR are less than 0.8 W/kg, the repeated measurement is not required.

## FCC SAR Test Report

### 4.7.4 Simultaneous Multi-band Transmission Evaluation

#### <Possibilities of Simultaneous Transmission>

The simultaneous transmission possibilities for this device are listed as below.

Simultaneous TX Combination	Capable Transmit Configurations	Body Exposure Condition
1	WLAN 2.4G Ant-1 + BT	Yes
2	WLAN 5G Ant-1 + BT	Yes

**Note :** The WLAN 2.4G and WLAN 5G cannot transmit simultaneously.

#### <SAR Summation Analysis>

Simultaneous transmission SAR test exclusion is determined for each operating configuration and exposure condition according to the reported standalone SAR of each applicable simultaneous transmitting antenna. When the sum of SAR<sub>1g</sub> of all simultaneously transmitting antennas in an operating mode and exposure condition combination is within the SAR limit(SAR<sub>1g</sub> 1.6 W/kg), the simultaneous transmission SAR is not required. When the sum of SAR<sub>1g</sub> is greater than the SAR limit (SAR<sub>1g</sub> 1.6 W/kg), SAR test exclusion is determined by the SPLSR.

Position	1g SAR W/kg			Summing Result 1g SAR W/kg	
	A	B	C	A+C	B+C
	WLAN 2.4GHz Ant 1	WLAN 5GHz Ant 1	BT Ant 0		
Front Face	0.16	0.30	0.08	0.24	0.38
Rear Face	0.10	0.29	0.04	0.14	0.33
Left Side	0.25	0.59	0.09	0.34	<b>0.68</b>
Right Side	0.25	0.10	0.10	0.35	0.20
Top Side	0.25	0.29	0.10	0.35	0.39
Bottom Side	0.26	0.56	0.12	0.38	<b>0.68</b>

**Test Engineer :** Eric Wu, and Kevin Yao

## FCC SAR Test Report

### 5. Calibration of Test Equipment

Equipment	Manufacturer	Model	SN	Cal. Date	Cal. Interval
System Validation Dipole	SPEAG	D2450V2	737	Aug. 26, 2019	1 Year
System Validation Dipole	SPEAG	D5GHzV2	1019	Mar. 21, 2019	1 Year
Dosimetric E-Field Probe	SPEAG	EX3DV4	7375	Dec. 13, 2018	1 Year
Dosimetric E-Field Probe	SPEAG	EX3DV4	7472	Aug. 30, 2019	1 Year
Dosimetric E-Field Probe	SPEAG	EX3DV4	7537	Jun. 18, 2019	1 Year
Data Acquisition Electronics	SPEAG	DAE3	579	Aug. 27, 2019	1 Year
Data Acquisition Electronics	SPEAG	DAE4	1277	Jan. 24, 2019	1 Year
Data Acquisition Electronics	SPEAG	DAE4	1585	Jun. 07, 2019	1 Year
Spectrum Analyzer	R&S	FSL6	102006	Mar. 26, 2019	1 Year
ENA Series Network Analyzer	Agilent	E5071C	MY46214281	Jun. 17, 2019	1 Year
MXG Analog Signal Generator	Agilent	N5181A	MY50143868	Jun. 27, 2019	1 Year
Power Meter	Anritsu	ML2495A	1218009	Jun. 28, 2019	1 Year
Power Sensor	Anritsu	MA2411B	1207252	Jun. 28, 2019	1 Year
Thermometer	YFE	YF-160A	130504591	Mar. 22, 2019	1 Year

## 6. Measurement Uncertainty

According to KDB 865664 D01, SAR measurement uncertainty analysis is required in SAR reports only when the highest measured SAR in a frequency band is  $\geq 1.5$  W/kg for 1-g SAR, and  $\geq 3.75$  W/kg for 10-g SAR. The procedures described in IEEE Std 1528-2013 should be applied. The expanded SAR measurement uncertainty must be  $\leq 30\%$ , for a confidence interval of  $k = 2$ . When the highest measured SAR within a frequency band is  $< 1.5$  W/kg for 1-g and  $< 3.75$  W/kg for 10-g, the extensive SAR measurement uncertainty analysis described in IEEE Std 1528-2013 is not required in SAR reports submitted for equipment approval. Hence, the measurement uncertainty analysis is not required in this SAR report because the test result met the condition.

## 7. Information of the Testing Laboratories

We, Bureau Veritas Consumer Products Services (H.K.) Ltd., Taoyuan Branch, were founded in 1988 to provide our best service in EMC, Radio, Telecom and Safety consultation. Our laboratories are accredited and approved according to ISO/IEC 17025.

If you have any comments, please feel free to contact us at the following:

**Taiwan Huaya Lab:**

Add: No. 19, Huaya 2nd Rd., Guishan Dist., Taoyuan City 333, Taiwan

Tel: +886-(0)3-318-3232

Fax: +886-(0)3-211-5834

**Taiwan Linkou Lab:**

Add: No. 47-2, Baodoucuokeng, Linkou Dist., New Taipei City 244, Taiwan

Tel: +886-(0)2-2605-2180

Fax: +886-(0)2-2605-2943

**Taiwan Hsinchu Lab1:**

Add: E-2, No. 1, Lixing 1st Rd., East Dist., Hsinchu City 300, Taiwan

Tel: +886-(0)3-666-8565

Fax: +886-(0)3-666-8323

**Taiwan Hsinchu Lab2:**

Add: No. 49, Ln. 206, Wende Rd., Qionglin Township, Hsinchu County 307, Taiwan

Tel: +886-(0)3-512-0595

Fax: +886-(0)3-512-0568

**Taiwan Xindian Lab:**

Add: B2F., No. 215, Sec. 3, Beixin Rd., Xindian Dist., New Taipei City 231, Taiwan

Tel: +886-(0)2-8914-5882

Fax: +886-(0)2-8914-5840

**Email:** [service.adt@tw.bureauveritas.com](mailto:service.adt@tw.bureauveritas.com)

**Web Site:** <https://ee.bureauveritas.com.tw/BVInternet/Default>

The road map of all our labs can be found in our web site also.

---END---

### Appendix A. SAR Plots of System Verification

The plots for system verification with largest deviation for each SAR system combination are shown as follows.

## System Check\_H2450\_191025

**DUT: Dipole 2450 MHz; Type: D2450V2; SN: 737**

Communication System: CW; Frequency: 2450 MHz; Duty Cycle: 1:1

Medium: H19T27N1\_1025 Medium parameters used:  $f = 2450$  MHz;  $\sigma = 1.852$  S/m;  $\epsilon_r = 38.607$ ;  $\rho = 1000$  kg/m<sup>3</sup>

Ambient Temperature : 23.7 °C ; Liquid Temperature : 23.3 °C

DASY5 Configuration:

- Probe: EX3DV4 - SN7375; ConvF(7.64, 7.64, 7.64); Calibrated: 2018/12/13
- Sensor-Surface: 1.4mm (Mechanical Surface Detection)
- Electronics: DAE4 Sn1277; Calibrated: 2019/01/24
- Phantom: Twin SAM Phantom\_1822; Type: QD000P40;
- Measurement SW: DASY52, Version 52.10 (2); SEMCAD X Version 14.6.12 (7450)

**Pin=250mW/Area Scan (81x81x1):** Interpolated grid: dx=1.200 mm, dy=1.200 mm

Maximum value of SAR (interpolated) = 22.6 W/kg

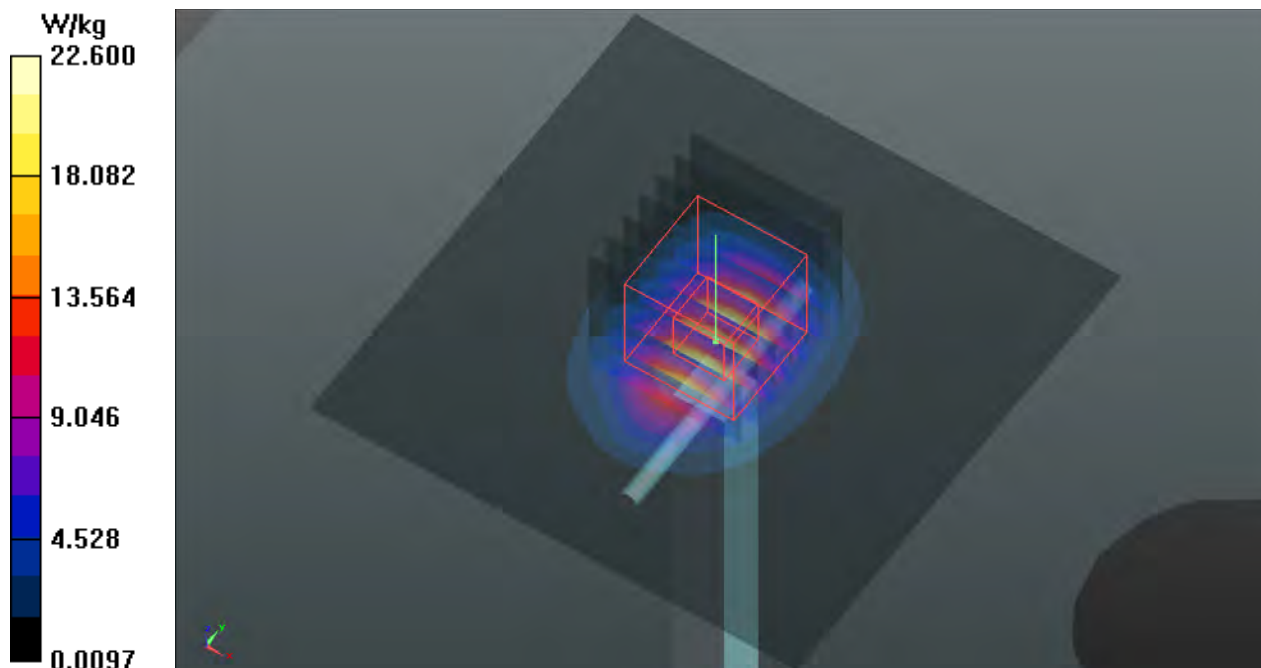
**Pin=250mW/Zoom Scan (7x7x7)/Cube 0:** Measurement grid: dx=5mm, dy=5mm, dz=5mm

Reference Value = 107.0 V/m; Power Drift = 0.01 dB

Peak SAR (extrapolated) = 28.2 W/kg

**SAR(1 g) = 13.6 W/kg; SAR(10 g) = 6.34 W/kg**

Maximum value of SAR (measured) = 22.7 W/kg



## System Check\_H5250\_191029

**DUT: Dipole 5 GHz; Type: D5GHzV2; SN: 1019**

Communication System: CW; Frequency: 5250 MHz; Duty Cycle: 1:1

Medium: H34T60N1\_1029 Medium parameters used:  $f = 5250$  MHz;  $\sigma = 4.604$  S/m;  $\epsilon_r = 35.76$ ;  $\rho = 1000$  kg/m<sup>3</sup>

Ambient Temperature : 23.5 °C ; Liquid Temperature : 23.3 °C

DASY5 Configuration:

- Probe: EX3DV4 - SN7472; ConvF(5.67, 5.67, 5.67); Calibrated: 2019/08/30
- Sensor-Surface: 1.4mm (Mechanical Surface Detection)
- Electronics: DAE3 Sn579; Calibrated: 2019/08/27
- Phantom: Twin SAM Phantom\_1496; Type: QD000P40CB;
- Measurement SW: DASY52, Version 52.10 (2); SEMCAD X Version 14.6.12 (7470)

**Pin=100mW/Area Scan (91x91x1):** Interpolated grid: dx=1.000 mm, dy=1.000 mm

Maximum value of SAR (interpolated) = 16.5 W/kg

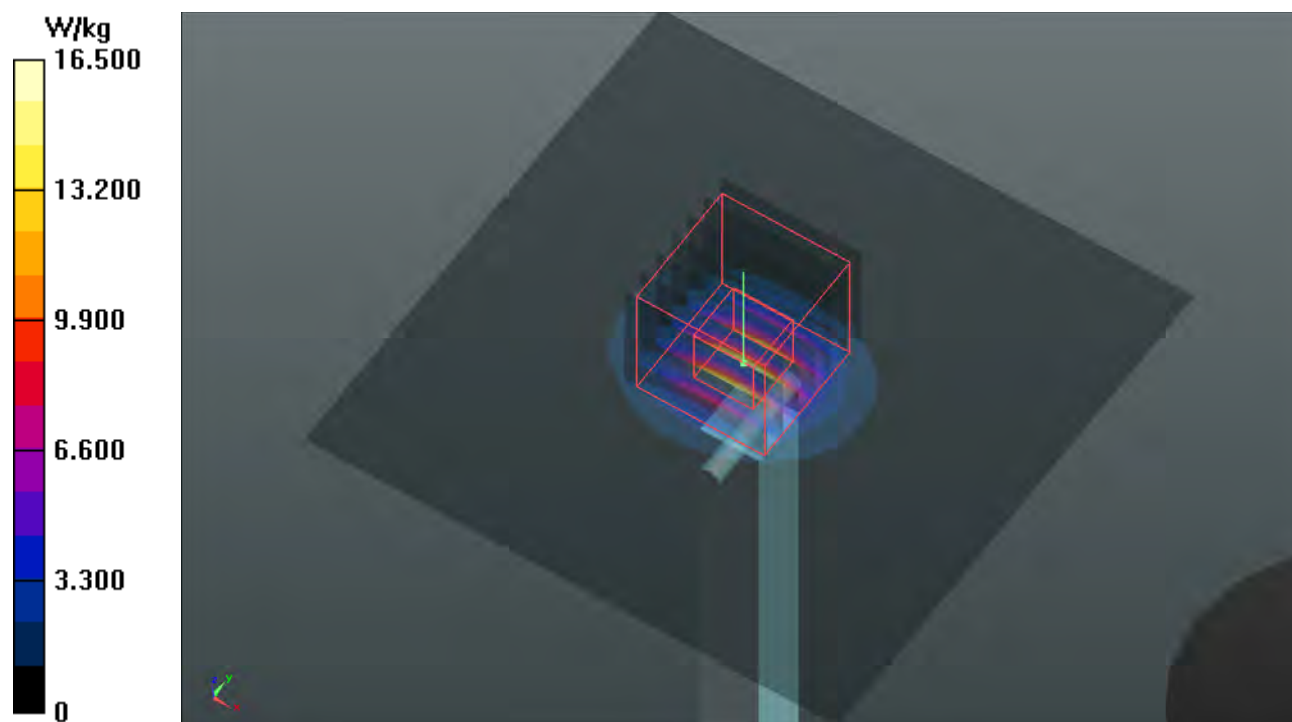
**Pin=100mW/Zoom Scan (7x7x12)/Cube 0:** Measurement grid: dx=4mm, dy=4mm, dz=2mm

Reference Value = 68.56 V/m; Power Drift = 0.03 dB

Peak SAR (extrapolated) = 27.9 W/kg

**SAR(1 g) = 8.66 W/kg; SAR(10 g) = 2.19 W/kg**

Maximum value of SAR (measured) = 17.9 W/kg



## System Check\_H5600\_191029

**DUT: Dipole 5 GHz; Type: D5GHzV2; SN: 1019**

Communication System: CW; Frequency: 5600 MHz; Duty Cycle: 1:1

Medium: H34T60N1\_1029 Medium parameters used:  $f = 5600$  MHz;  $\sigma = 4.966$  S/m;  $\epsilon_r = 35.251$ ;  $\rho = 1000$  kg/m<sup>3</sup>

Ambient Temperature : 23.5 °C ; Liquid Temperature : 23.3 °C

DASY5 Configuration:

- Probe: EX3DV4 - SN7472; ConvF(5.1, 5.1, 5.1); Calibrated: 2019/08/30
- Sensor-Surface: 1.4mm (Mechanical Surface Detection)
- Electronics: DAE3 Sn579; Calibrated: 2019/08/27
- Phantom: Twin SAM Phantom\_1496; Type: QD000P40CB;
- Measurement SW: DASY52, Version 52.10 (2); SEMCAD X Version 14.6.12 (7470)

**Pin=100mW/Area Scan (91x91x1):** Interpolated grid: dx=1.000 mm, dy=1.000 mm

Maximum value of SAR (interpolated) = 20.3 W/kg

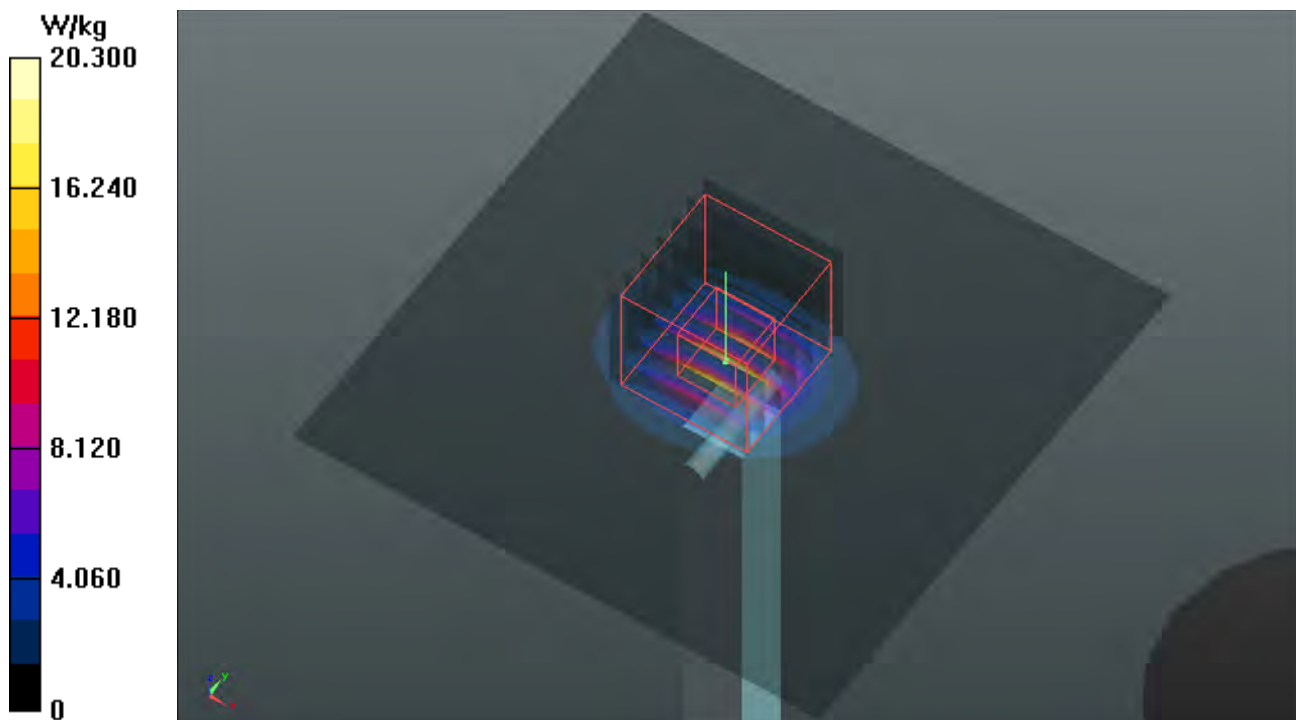
**Pin=100mW/Zoom Scan (7x7x12)/Cube 0:** Measurement grid: dx=4mm, dy=4mm, dz=2mm

Reference Value = 63.86 V/m; Power Drift = 0.04 dB

Peak SAR (extrapolated) = 36.3 W/kg

**SAR(1 g) = 8.36 W/kg; SAR(10 g) = 2.38 W/kg**

Maximum value of SAR (measured) = 21.8 W/kg



## System Check\_H5750\_191028

**DUT: Dipole 5 GHz; Type: D5GHzV2; SN: 1019**

Communication System: CW; Frequency: 5750 MHz; Duty Cycle: 1:1

Medium: H34T60N1\_1028 Medium parameters used:  $f = 5750$  MHz;  $\sigma = 5.33$  S/m;  $\epsilon_r = 35.546$ ;  $\rho = 1000$  kg/m<sup>3</sup>

Ambient Temperature : 23.8 °C ; Liquid Temperature : 23.3 °C

DASY5 Configuration:

- Probe: EX3DV4 - SN7537; ConvF(4.99, 4.99, 4.99); Calibrated: 2019/06/18
- Sensor-Surface: 1.4mm (Mechanical Surface Detection)
- Electronics: DAE4 Sn1585; Calibrated: 2019/06/07
- Phantom: SAM Phantom\_1982; Type: QD 000 P41 Ax; Serial: 1982
- Measurement SW: DASY52, Version 52.10 (2); SEMCAD X Version 14.6.12 (7470)

**Pin=100mW/Area Scan (91x91x1):** Interpolated grid: dx=1.000 mm, dy=1.000 mm

Maximum value of SAR (interpolated) = 18.7 W/kg

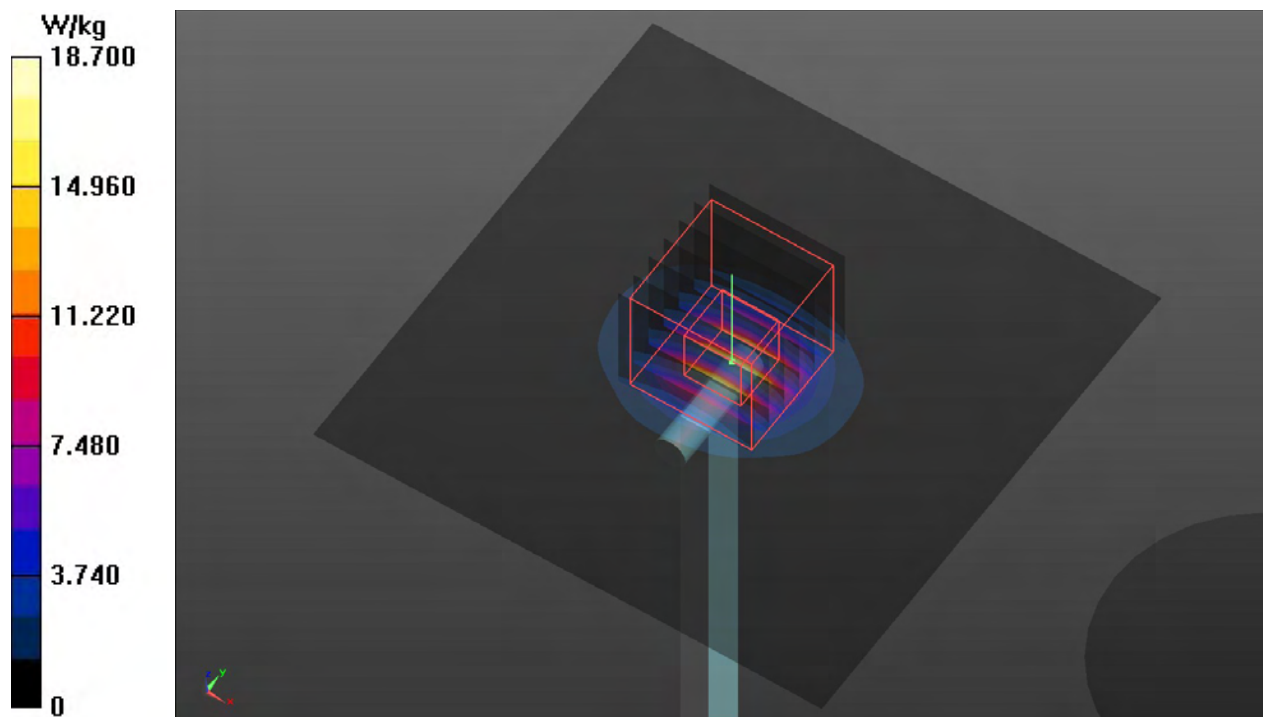
**Pin=100mW/Zoom Scan (7x7x12)/Cube 0:** Measurement grid: dx=4mm, dy=4mm, dz=2mm

Reference Value = 67.94 V/m; Power Drift = 0.05 dB

Peak SAR (extrapolated) = 34.5 W/kg

**SAR(1 g) = 7.66 W/kg; SAR(10 g) = 2.19 W/kg**

Maximum value of SAR (measured) = 20.2 W/kg



## **Appendix B. SAR Plots of SAR Measurement**

The SAR plots for highest measured SAR in each exposure configuration, wireless mode and frequency band combination, and measured SAR > 1.5 W/kg are shown as follows.

**P01 WLAN2.4G\_802.11b\_Bottom Side\_5mm\_Ch11\_Sample1\_Ant0+1****DUT: 190628E06**

Communication System: WLAN\_2.4G; Frequency: 2462 MHz; Duty Cycle: 1:1

Medium: H19T27N1\_1025 Medium parameters used:  $f = 2462$  MHz;  $\sigma = 1.867$  S/m;  $\epsilon_r = 38.595$ ;  $\rho = 1000$  kg/m<sup>3</sup>

Ambient Temperature : 23.7 °C ; Liquid Temperature : 23.3 °C

DASY5 Configuration:

- Probe: EX3DV4 - SN7375; ConvF(7.64, 7.64, 7.64); Calibrated: 2018/12/13
- Sensor-Surface: 1.4mm (Mechanical Surface Detection)
- Electronics: DAE4 Sn1277; Calibrated: 2019/01/24
- Phantom: Twin SAM Phantom\_1822; Type: QD000P40;
- Measurement SW: DASY52, Version 52.10 (2); SEMCAD X Version 14.6.12 (7450)

**- Area Scan (71x171x1):** Interpolated grid: dx=1.200 mm, dy=1.200 mm

Maximum value of SAR (interpolated) = 0.601 W/kg

**- Zoom Scan (5x5x7)/Cube 0:** Measurement grid: dx=8mm, dy=8mm, dz=5mm

Reference Value = 14.68 V/m; Power Drift = -0.06 dB

Peak SAR (extrapolated) = 0.811 W/kg

**SAR(1 g) = 0.308 W/kg; SAR(10 g) = 0.131 W/kg**

Maximum value of SAR (measured) = 0.563 W/kg

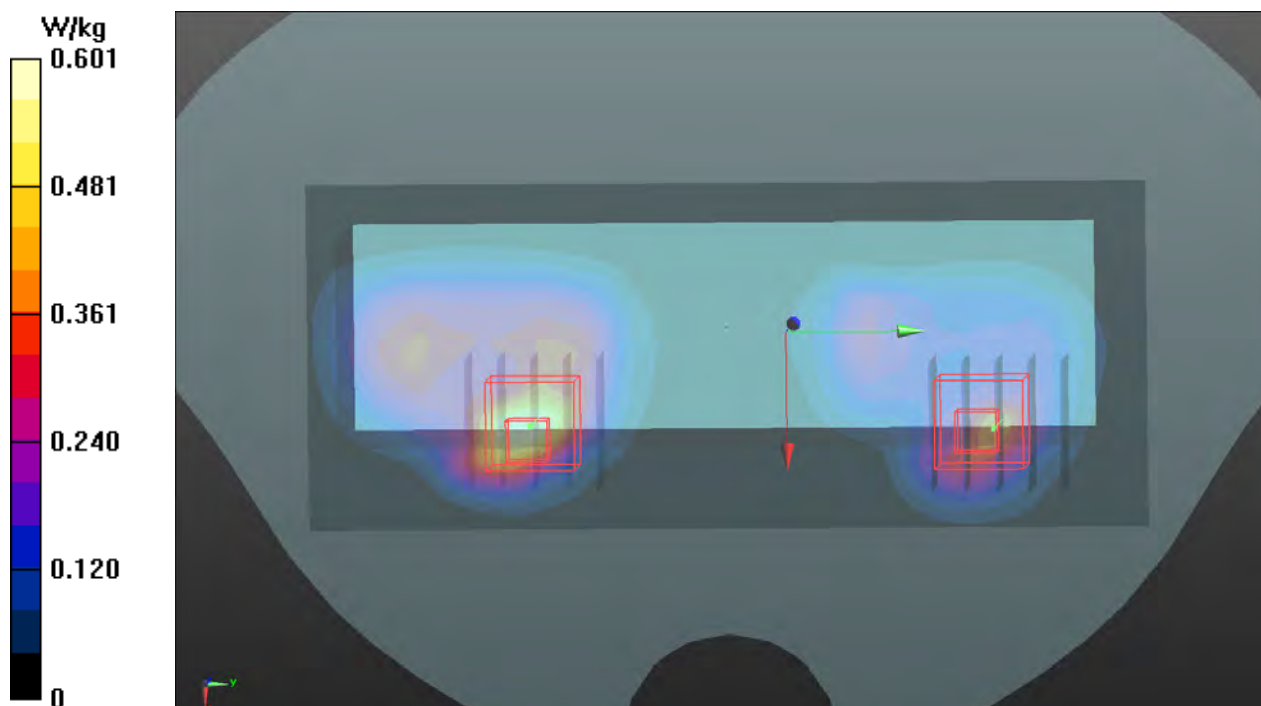
**- Zoom Scan (5x5x7)/Cube 1:** Measurement grid: dx=8mm, dy=8mm, dz=5mm

Reference Value = 14.68 V/m; Power Drift = -0.06 dB

Peak SAR (extrapolated) = 0.756 W/kg

**SAR(1 g) = 0.292 W/kg; SAR(10 g) = 0.120 W/kg**

Maximum value of SAR (measured) = 0.537 W/kg



**P02 WLAN5.3G\_802.11ac VHT80\_Left Side\_5mm\_Ch58\_Sample1\_Ant0+1****DUT: 190628E06**

Communication System: WLAN\_5G; Frequency: 5290 MHz; Duty Cycle: 1:1

Medium: H34T60N1\_1029 Medium parameters used:  $f = 5290$  MHz;  $\sigma = 4.7$  S/m;  $\epsilon_r = 36.874$ ;  $\rho = 1000$  kg/m<sup>3</sup>

Ambient Temperature : 23.5 °C ; Liquid Temperature : 23.3 °C

DASY5 Configuration:

- Probe: EX3DV4 - SN7472; ConvF(5.67, 5.67, 5.67); Calibrated: 2019/08/30
- Sensor-Surface: 1.4mm (Mechanical Surface Detection)
- Electronics: DAE3 Sn579; Calibrated: 2019/08/27
- Phantom: Twin SAM Phantom\_1496; Type: QD000P40CB;
- Measurement SW: DASY52, Version 52.10 (2); SEMCAD X Version 14.6.12 (7470)

**- Area Scan (81x201x1):** Interpolated grid: dx=1.000 mm, dy=1.000 mm

Maximum value of SAR (interpolated) = 0.788 W/kg

**- Zoom Scan (6x6x12)/Cube 0:** Measurement grid: dx=5mm, dy=5mm, dz=2mm

Reference Value = 12.67 V/m; Power Drift = -0.12 dB

Peak SAR (extrapolated) = 1.27 W/kg

**SAR(1 g) = 0.361 W/kg; SAR(10 g) = 0.118 W/kg**

Maximum value of SAR (measured) = 0.776 W/kg

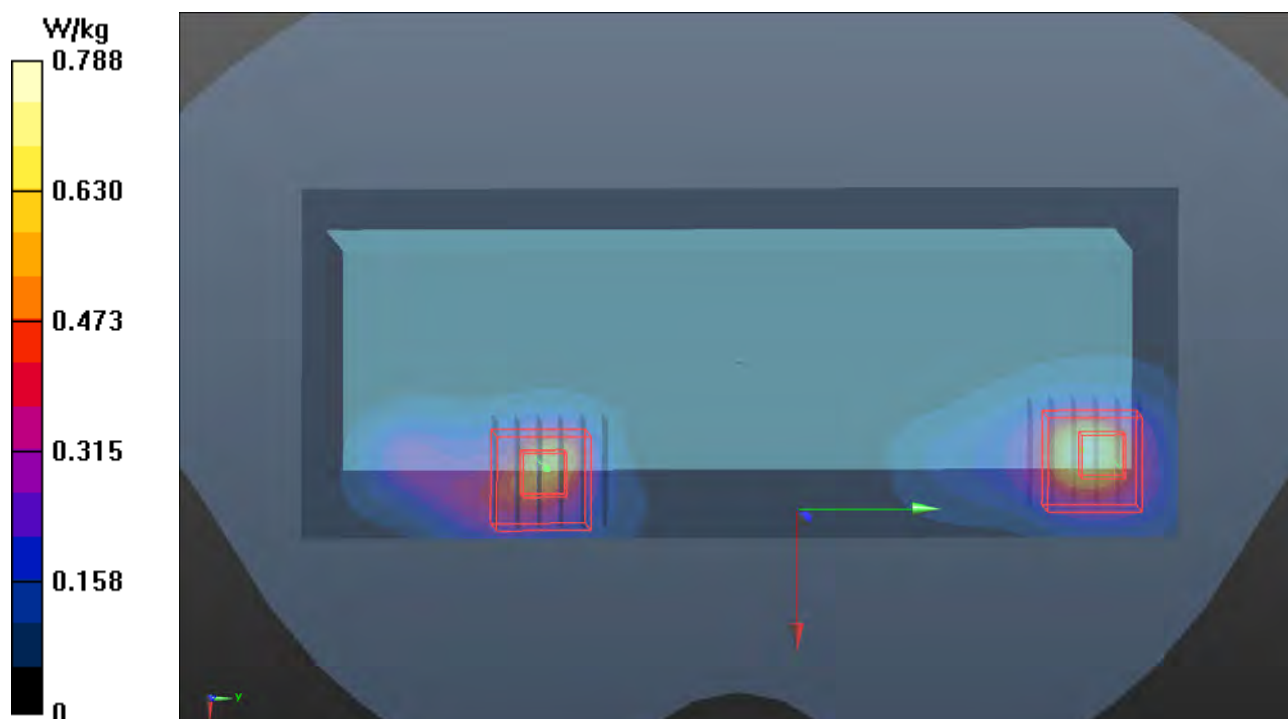
**- Zoom Scan (6x6x12)/Cube 1:** Measurement grid: dx=5mm, dy=5mm, dz=2mm

Reference Value = 12.67 V/m; Power Drift = -0.12 dB

Peak SAR (extrapolated) = 1.13 W/kg

**SAR(1 g) = 0.311 W/kg; SAR(10 g) = 0.106 W/kg**

Maximum value of SAR (measured) = 0.663 W/kg



**P03 WLAN5.6G\_802.11ac VHT80\_Left Side\_5mm\_Ch138\_Sample1\_Ant0+1****DUT: 190628E06**

Communication System: WLAN\_5G; Frequency: 5690 MHz; Duty Cycle: 1:1

Medium: H34T60N1\_1029 Medium parameters used:  $f = 5690$  MHz;  $\sigma = 5.106$  S/m;  $\epsilon_r = 36.082$ ;  $\rho = 1000$  kg/m<sup>3</sup>

Ambient Temperature : 23.5 °C ; Liquid Temperature : 23.3 °C

DASY5 Configuration:

- Probe: EX3DV4 - SN7472; ConvF(5.23, 5.23, 5.23); Calibrated: 2019/08/30
- Sensor-Surface: 1.4mm (Mechanical Surface Detection)
- Electronics: DAE3 Sn579; Calibrated: 2019/08/27
- Phantom: Twin SAM Phantom\_1496; Type: QD000P40CB;
- Measurement SW: DASY52, Version 52.10 (2); SEMCAD X Version 14.6.12 (7470)

**- Area Scan (81x201x1):** Interpolated grid: dx=1.000 mm, dy=1.000 mm

Maximum value of SAR (interpolated) = 1.66 W/kg

**- Zoom Scan (6x6x12)/Cube 0:** Measurement grid: dx=5mm, dy=5mm, dz=2mm

Reference Value = 14.72 V/m; Power Drift = -0.03 dB

Peak SAR (extrapolated) = 2.49 W/kg

**SAR(1 g) = 0.597 W/kg; SAR(10 g) = 0.198 W/kg**

Maximum value of SAR (measured) = 1.42 W/kg

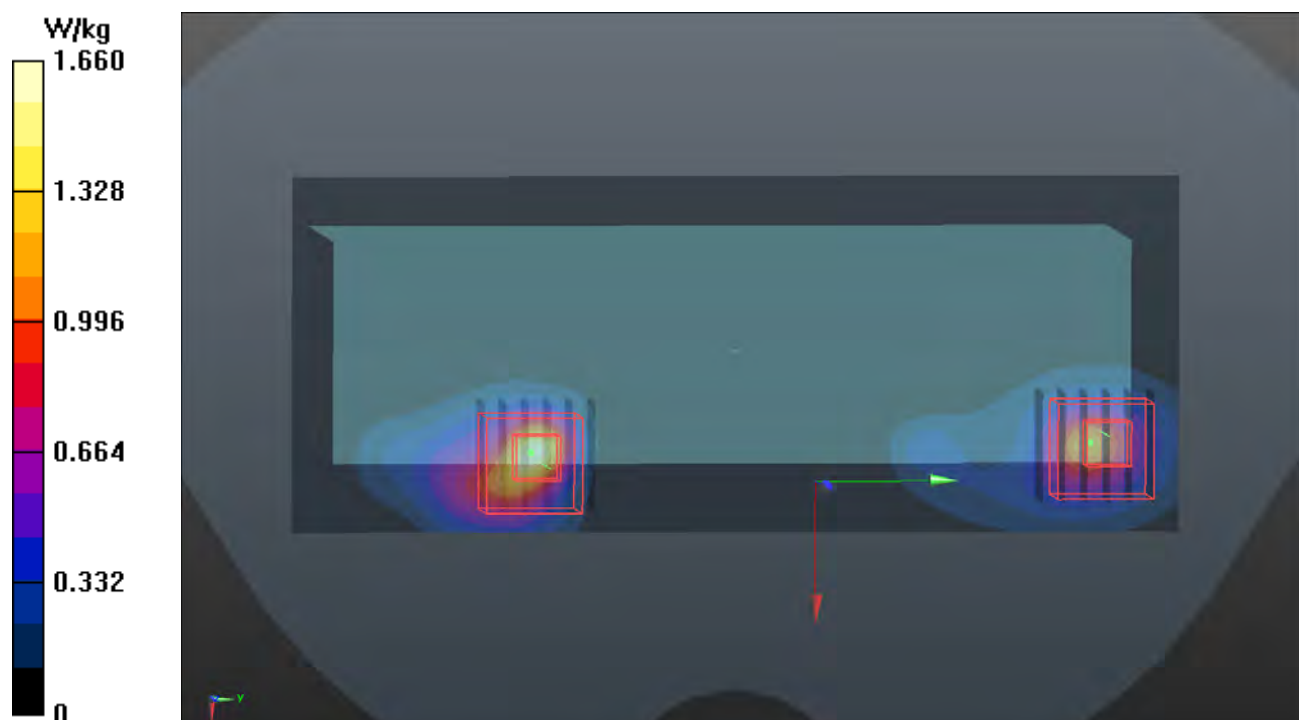
**- Zoom Scan (6x6x12)/Cube 1:** Measurement grid: dx=5mm, dy=5mm, dz=2mm

Reference Value = 14.72 V/m; Power Drift = -0.03 dB

Peak SAR (extrapolated) = 2.18 W/kg

**SAR(1 g) = 0.545 W/kg; SAR(10 g) = 0.187 W/kg**

Maximum value of SAR (measured) = 1.24 W/kg



**P04 WLAN5.8G\_802.11ac VHT80\_Left Side\_5mm\_Ch155\_Sample1\_Ant0+1****DUT: 190628E06**

Communication System: WLAN\_5G; Frequency: 5775 MHz; Duty Cycle: 1:1

Medium: H34T60N1\_1028 Medium parameters used:  $f = 5775$  MHz;  $\sigma = 5.309$  S/m;  $\epsilon_r = 35.467$ ;  $\rho = 1000$  kg/m<sup>3</sup>

Ambient Temperature : 23.8 °C ; Liquid Temperature : 23.3 °C

DASY5 Configuration:

- Probe: EX3DV4 - SN7537; ConvF(4.99, 4.99, 4.99); Calibrated: 2019/06/18
- Sensor-Surface: 1.4mm (Mechanical Surface Detection)
- Electronics: DAE4 Sn1585; Calibrated: 2019/06/07
- Phantom: SAM Phantom\_1982; Type: QD 000 P41 Ax; Serial: 1982
- Measurement SW: DASY52, Version 52.10 (2); SEMCAD X Version 14.6.12 (7470)

**- Area Scan (81x201x1):** Interpolated grid:  $dx=1.000$  mm,  $dy=1.000$  mm

Maximum value of SAR (interpolated) = 1.70 W/kg

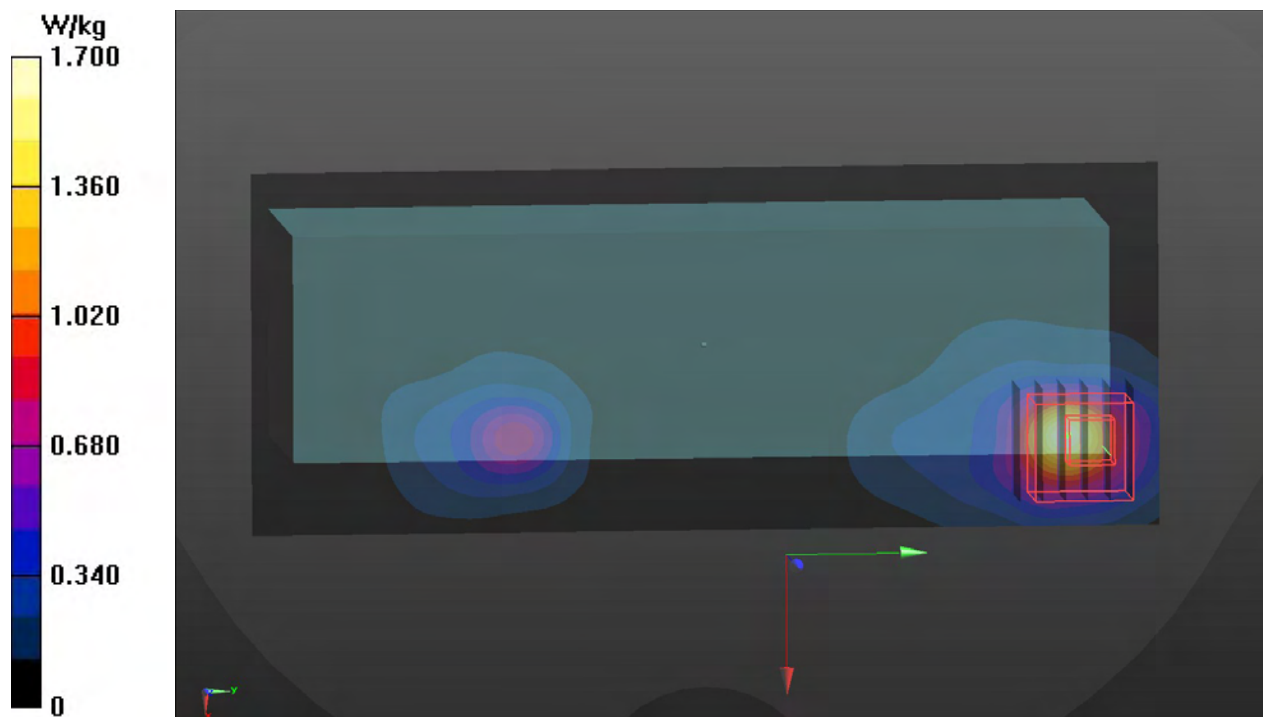
**- Zoom Scan (6x6x12)/Cube 0:** Measurement grid:  $dx=5$ mm,  $dy=5$ mm,  $dz=2$ mm

Reference Value = 15.68 V/m; Power Drift = 0.03 dB

Peak SAR (extrapolated) = 2.84 W/kg

**SAR(1 g) = 0.696 W/kg; SAR(10 g) = 0.273 W/kg**

Maximum value of SAR (measured) = 1.61 W/kg



**P05 BT\_BDR\_Bottom Side\_5mm\_Ch39\_Sample1\_Ant0****DUT: 190628E06**

Communication System: BT; Frequency: 2441 MHz; Duty Cycle: 1:1.66

Medium: H19T27N1\_1025 Medium parameters used:  $f = 2441$  MHz;  $\sigma = 1.842$  S/m;  $\epsilon_r = 38.637$ ;  $\rho = 1000$  kg/m<sup>3</sup>

Ambient Temperature : 23.7 °C ; Liquid Temperature : 23.3 °C

DASY5 Configuration:

- Probe: EX3DV4 - SN7375; ConvF(7.64, 7.64, 7.64); Calibrated: 2018/12/13
- Sensor-Surface: 1.4mm (Mechanical Surface Detection)
- Electronics: DAE4 Sn1277; Calibrated: 2019/01/24
- Phantom: Twin SAM Phantom\_1822; Type: QD000P40;
- Measurement SW: DASY52, Version 52.10 (2); SEMCAD X Version 14.6.12 (7450)

**- Area Scan (71x171x1):** Interpolated grid: dx=1.200 mm, dy=1.200 mm

Maximum value of SAR (interpolated) = 0.116 W/kg

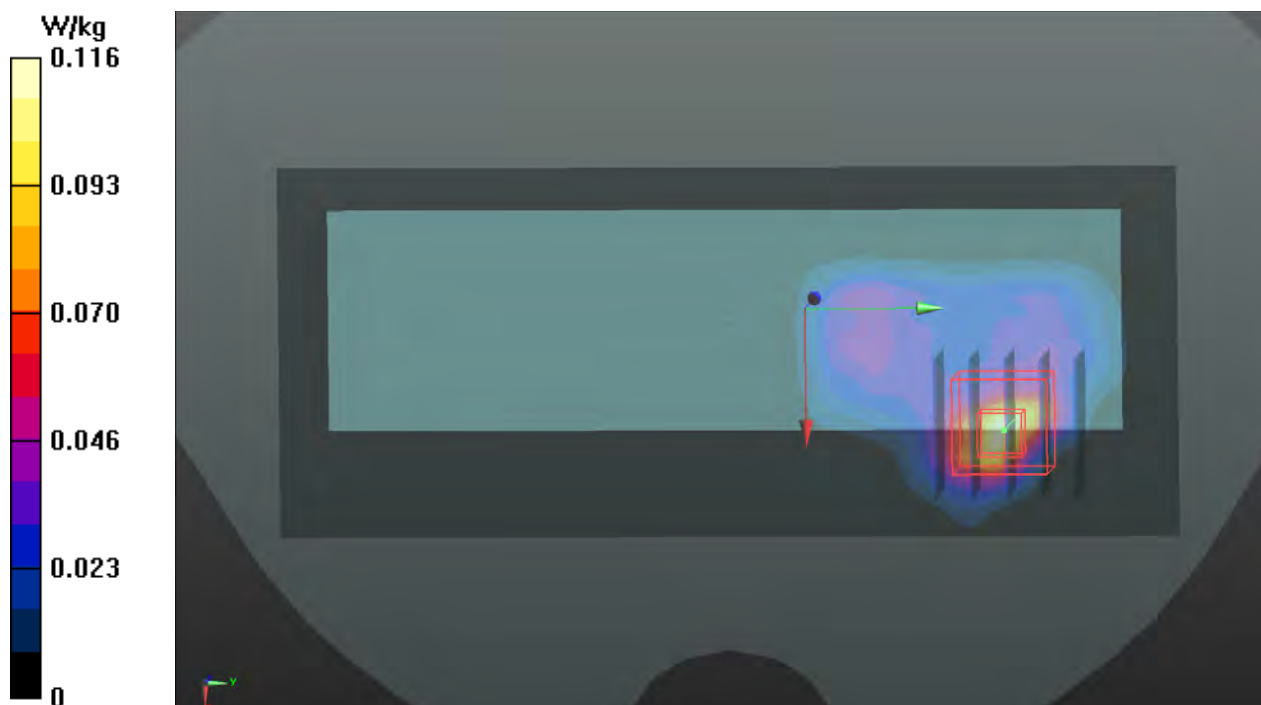
**- Zoom Scan (5x5x7)/Cube 0:** Measurement grid: dx=8mm, dy=8mm, dz=5mm

Reference Value = 6.839 V/m; Power Drift = -0.01 dB

Peak SAR (extrapolated) = 0.144 W/kg

**SAR(1 g) = 0.055 W/kg; SAR(10 g) = 0.022 W/kg**

Maximum value of SAR (measured) = 0.113 W/kg



## **Appendix C. Calibration Certificate for Probe and Dipole**

The SPEAG calibration certificates are shown as follows.



Accredited by the Swiss Accreditation Service (SAS)

The Swiss Accreditation Service is one of the signatories to the EA  
Multilateral Agreement for the recognition of calibration certificates

Accreditation No.: **SCS 0108**

Client **B.V. ADT (Auden)**

Certificate No: **D2450V2-737\_Aug19**

## CALIBRATION CERTIFICATE

Object **D2450V2 - SN:737**

Calibration procedure(s) **QA CAL-05.v11**  
**Calibration Procedure for SAR Validation Sources between 0.7-3 GHz**

Calibration date: **August 26, 2019**

This calibration certificate documents the traceability to national standards, which realize the physical units of measurements (SI).  
The measurements and the uncertainties with confidence probability are given on the following pages and are part of the certificate.

All calibrations have been conducted in the closed laboratory facility: environment temperature ( $22 \pm 3$ )°C and humidity < 70%.

Calibration Equipment used (M&TE critical for calibration)

Primary Standards	ID #	Cal Date (Certificate No.)	Scheduled Calibration
Power meter NRP	SN: 104778	03-Apr-19 (No. 217-02892/02893)	Apr-20
Power sensor NRP-Z91	SN: 103244	03-Apr-19 (No. 217-02892)	Apr-20
Power sensor NRP-Z91	SN: 103245	03-Apr-19 (No. 217-02893)	Apr-20
Reference 20 dB Attenuator	SN: 5058 (20k)	04-Apr-19 (No. 217-02894)	Apr-20
Type-N mismatch combination	SN: 5047.2 / 06327	04-Apr-19 (No. 217-02895)	Apr-20
Reference Probe EX3DV4	SN: 7349	29-May-19 (No. EX3-7349_May19)	May-20
DAE4	SN: 601	30-Apr-19 (No. DAE4-601_Apr19)	Apr-20

Secondary Standards	ID #	Check Date (in house)	Scheduled Check
Power meter E4419B	SN: GB39512475	30-Oct-14 (in house check Feb-19)	In house check: Oct-20
Power sensor HP 8481A	SN: US37292783	07-Oct-15 (in house check Oct-18)	In house check: Oct-20
Power sensor HP 8481A	SN: MY41092317	07-Oct-15 (in house check Oct-18)	In house check: Oct-20
RF generator R&S SMT-06	SN: 100972	15-Jun-15 (in house check Oct-18)	In house check: Oct-20
Network Analyzer Agilent E8358A	SN: US41080477	31-Mar-14 (in house check Oct-18)	In house check: Oct-19

Calibrated by: **Michael Weber** **Laboratory Technician**

Signature

Approved by: **Katja Pokovic** **Technical Manager**

Issued: August 26, 2019

This calibration certificate shall not be reproduced except in full without written approval of the laboratory.



Accredited by the Swiss Accreditation Service (SAS)

The Swiss Accreditation Service is one of the signatories to the EA  
Multilateral Agreement for the recognition of calibration certificates

Accreditation No.: **SCS 0108**

### Glossary:

TSL	tissue simulating liquid
ConvF	sensitivity in TSL / NORM x,y,z
N/A	not applicable or not measured

### Calibration is Performed According to the Following Standards:

- IEEE Std 1528-2013, "IEEE Recommended Practice for Determining the Peak Spatial-Averaged Specific Absorption Rate (SAR) in the Human Head from Wireless Communications Devices: Measurement Techniques", June 2013
- IEC 62209-1, "Measurement procedure for the assessment of Specific Absorption Rate (SAR) from hand-held and body-mounted devices used next to the ear (frequency range of 300 MHz to 6 GHz)", July 2016
- IEC 62209-2, "Procedure to determine the Specific Absorption Rate (SAR) for wireless communication devices used in close proximity to the human body (frequency range of 30 MHz to 6 GHz)", March 2010
- KDB 865664, "SAR Measurement Requirements for 100 MHz to 6 GHz"

### Additional Documentation:

- DASY4/5 System Handbook

### Methods Applied and Interpretation of Parameters:

- Measurement Conditions:** Further details are available from the Validation Report at the end of the certificate. All figures stated in the certificate are valid at the frequency indicated.
- Antenna Parameters with TSL:** The dipole is mounted with the spacer to position its feed point exactly below the center marking of the flat phantom section, with the arms oriented parallel to the body axis.
- Feed Point Impedance and Return Loss:** These parameters are measured with the dipole positioned under the liquid filled phantom. The impedance stated is transformed from the measurement at the SMA connector to the feed point. The Return Loss ensures low reflected power. No uncertainty required.
- Electrical Delay:** One-way delay between the SMA connector and the antenna feed point. No uncertainty required.
- SAR measured:** SAR measured at the stated antenna input power.
- SAR normalized:** SAR as measured, normalized to an input power of 1 W at the antenna connector.
- SAR for nominal TSL parameters:** The measured TSL parameters are used to calculate the nominal SAR result.

The reported uncertainty of measurement is stated as the standard uncertainty of measurement multiplied by the coverage factor  $k=2$ , which for a normal distribution corresponds to a coverage probability of approximately 95%.

## Measurement Conditions

DASY system configuration, as far as not given on page 1.

<b>DASY Version</b>	DASY5	V52.10.2
<b>Extrapolation</b>	Advanced Extrapolation	
<b>Phantom</b>	Modular Flat Phantom	
<b>Distance Dipole Center - TSL</b>	10 mm	with Spacer
<b>Zoom Scan Resolution</b>	dx, dy, dz = 5 mm	
<b>Frequency</b>	2450 MHz $\pm$ 1 MHz	

## Head TSL parameters

The following parameters and calculations were applied.

	Temperature	Permittivity	Conductivity
<b>Nominal Head TSL parameters</b>	22.0 °C	39.2	1.80 mho/m
<b>Measured Head TSL parameters</b>	(22.0 $\pm$ 0.2) °C	37.8 $\pm$ 6 %	1.83 mho/m $\pm$ 6 %
<b>Head TSL temperature change during test</b>	< 0.5 °C	----	----

## SAR result with Head TSL

<b>SAR averaged over 1 cm<sup>3</sup> (1 g) of Head TSL</b>	Condition	
SAR measured	250 mW input power	13.4 W/kg
SAR for nominal Head TSL parameters	normalized to 1W	<b>52.7 W/kg <math>\pm</math> 17.0 % (k=2)</b>

<b>SAR averaged over 10 cm<sup>3</sup> (10 g) of Head TSL</b>	condition	
SAR measured	250 mW input power	6.20 W/kg
SAR for nominal Head TSL parameters	normalized to 1W	<b>24.5 W/kg <math>\pm</math> 16.5 % (k=2)</b>

## Appendix (Additional assessments outside the scope of SCS 0108)

### Antenna Parameters with Head TSL

Impedance, transformed to feed point	54.3 $\Omega$ + 4.5 j $\Omega$
Return Loss	- 24.5 dB

### General Antenna Parameters and Design

Electrical Delay (one direction)	1.162 ns
----------------------------------	----------

After long term use with 100W radiated power, only a slight warming of the dipole near the feedpoint can be measured.

The dipole is made of standard semirigid coaxial cable. The center conductor of the feeding line is directly connected to the second arm of the dipole. The antenna is therefore short-circuited for DC-signals. On some of the dipoles, small end caps are added to the dipole arms in order to improve matching when loaded according to the position as explained in the "Measurement Conditions" paragraph. The SAR data are not affected by this change. The overall dipole length is still according to the Standard.

No excessive force must be applied to the dipole arms, because they might bend or the soldered connections near the feedpoint may be damaged.

### Additional EUT Data

Manufactured by	SPEAG
-----------------	-------

## DASY5 Validation Report for Head TSL

Date: 26.08.2019

Test Laboratory: SPEAG, Zurich, Switzerland

**DUT: Dipole 2450 MHz; Type: D2450V2; Serial: D2450V2 - SN:737**

Communication System: UID 0 - CW; Frequency: 2450 MHz

Medium parameters used:  $f = 2450$  MHz;  $\sigma = 1.83$  S/m;  $\epsilon_r = 37.8$ ;  $\rho = 1000$  kg/m<sup>3</sup>

Phantom section: Flat Section

Measurement Standard: DASY5 (IEEE/IEC/ANSI C63.19-2011)

DASY52 Configuration:

- Probe: EX3DV4 - SN7349; ConvF(7.9, 7.9, 7.9) @ 2450 MHz; Calibrated: 29.05.2019
- Sensor-Surface: 1.4mm (Mechanical Surface Detection)
- Electronics: DAE4 Sn601; Calibrated: 30.04.2019
- Phantom: Flat Phantom 5.0 (front); Type: QD 000 P50 AA; Serial: 1001
- DASY52 52.10.2(1504); SEMCAD X 14.6.12(7470)

### **Dipole Calibration for Head Tissue/Pin=250 mW, d=10mm/Zoom Scan (7x7x7)/Cube 0:**

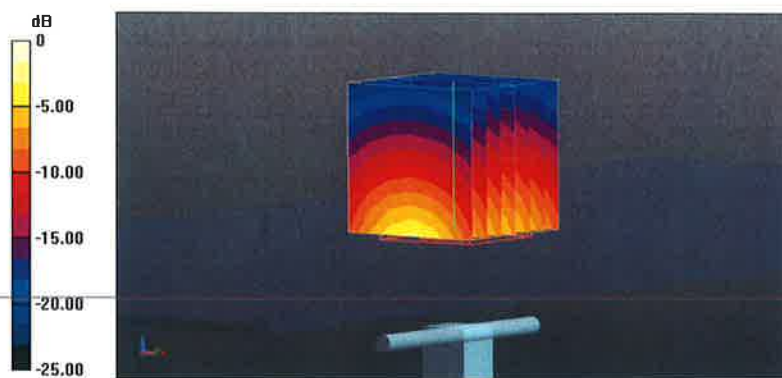
Measurement grid: dx=5mm, dy=5mm, dz=5mm

Reference Value = 117.9 V/m; Power Drift = 0.00 dB

Peak SAR (extrapolated) = 26.7 W/kg

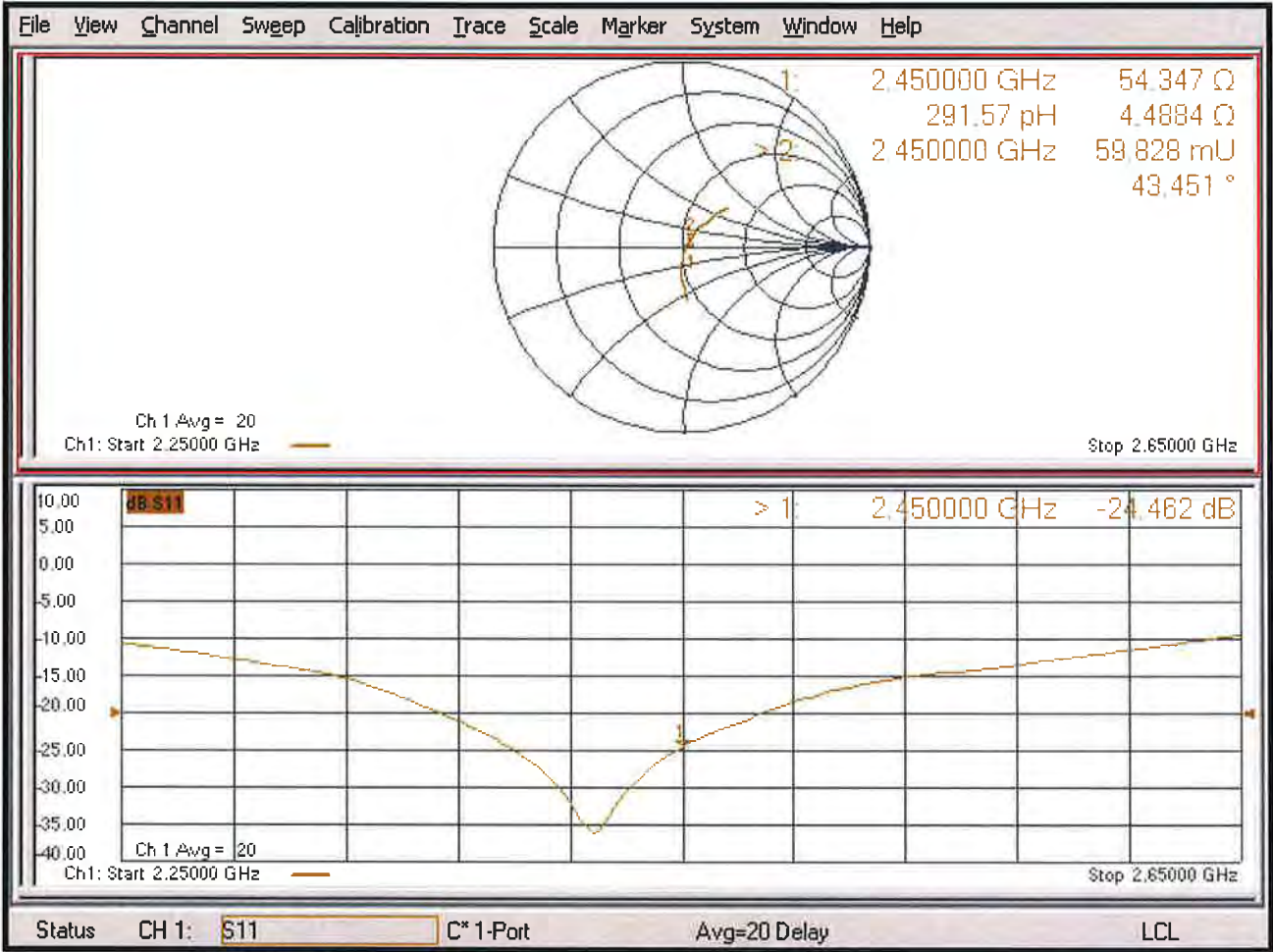
**SAR(1 g) = 13.4 W/kg; SAR(10 g) = 6.2 W/kg**

Maximum value of SAR (measured) = 22.1 W/kg



0 dB = 22.1 W/kg = 13.44 dBW/kg

Impedance Measurement Plot for Head TSL





Accredited by the Swiss Accreditation Service (SAS)

Accreditation No.: **SCS 0108**

The Swiss Accreditation Service is one of the signatories to the EA  
 Multilateral Agreement for the recognition of calibration certificates

Client **B.V. ADT (Auden)**

Certificate No: **D5GHzV2-1019\_Mar19**

## CALIBRATION CERTIFICATE

Object **D5GHzV2 - SN:1019**

Calibration procedure(s) **QA CAL-22.v4**  
**Calibration Procedure for SAR Validation Sources between 3-6 GHz**

Calibration date: **March 21, 2019**

This calibration certificate documents the traceability to national standards, which realize the physical units of measurements (SI).  
 The measurements and the uncertainties with confidence probability are given on the following pages and are part of the certificate.

All calibrations have been conducted in the closed laboratory facility: environment temperature  $(22 \pm 3)^{\circ}\text{C}$  and humidity  $< 70\%$ .

Calibration Equipment used (M&TE critical for calibration)

Primary Standards	ID #	Cal Date (Certificate No.)	Scheduled Calibration
Power meter NRP	SN: 104778	04-Apr-18 (No. 217-02672/02673)	Apr-19
Power sensor NRP-Z91	SN: 103244	04-Apr-18 (No. 217-02672)	Apr-19
Power sensor NRP-Z91	SN: 103245	04-Apr-18 (No. 217-02673)	Apr-19
Reference 20 dB Attenuator	SN: 5058 (20k)	04-Apr-18 (No. 217-02682)	Apr-19
Type-N mismatch combination	SN: 5047.2 / 06327	04-Apr-18 (No. 217-02683)	Apr-19
Reference Probe EX3DV4	SN: 3503	31-Dec-18 (No. EX3-3503_Dec18)	Dec-19
DAE4	SN: 601	04-Oct-18 (No. DAE4-601_Oct18)	Oct-19
Secondary Standards	ID #	Check Date (in house)	Scheduled Check
Power meter E4419B	SN: GB41293874	06-Apr-16 (in house check Jun-18)	In house check: Jun-20
Power sensor HP 8481A	SN: US37292783	07-Oct-15 (in house check Oct-18)	In house check: Oct-20
Power sensor HP 8481A	SN: MY41092317	07-Oct-15 (in house check Oct-18)	In house check: Oct-20
RF generator R&S SMT-06	SN: 100972	15-Jun-15 (in house check Oct-18)	In house check: Oct-20
Network Analyzer Agilent E8358A	SN: US41080477	31-Mar-14 (in house check Oct-18)	In house check: Oct-19

Calibrated by: **Jeton Kastrati**      Function: **Laboratory Technician**      Signature: 

Approved by: **Katja Pokovic**      Technical Manager      

Issued: March 25, 2019

This calibration certificate shall not be reproduced except in full without written approval of the laboratory.



Accredited by the Swiss Accreditation Service (SAS)

The Swiss Accreditation Service is one of the signatories to the EA  
Multilateral Agreement for the recognition of calibration certificates

Accreditation No.: **SCS 0108**

### Glossary:

TSL	tissue simulating liquid
ConvF	sensitivity in TSL / NORM x,y,z
N/A	not applicable or not measured

### Calibration is Performed According to the Following Standards:

- IEEE Std 1528-2013, "IEEE Recommended Practice for Determining the Peak Spatial-Averaged Specific Absorption Rate (SAR) in the Human Head from Wireless Communications Devices: Measurement Techniques", June 2013
- IEC 62209-1, "Measurement procedure for the assessment of Specific Absorption Rate (SAR) from hand-held and body-mounted devices used next to the ear (frequency range of 300 MHz to 6 GHz)", July 2016
- IEC 62209-2, "Procedure to determine the Specific Absorption Rate (SAR) for wireless communication devices used in close proximity to the human body (frequency range of 30 MHz to 6 GHz)", March 2010
- KDB 865664, "SAR Measurement Requirements for 100 MHz to 6 GHz"

### Additional Documentation:

- DASY4/5 System Handbook

### Methods Applied and Interpretation of Parameters:

- Measurement Conditions:** Further details are available from the Validation Report at the end of the certificate. All figures stated in the certificate are valid at the frequency indicated.
- Antenna Parameters with TSL:** The dipole is mounted with the spacer to position its feed point exactly below the center marking of the flat phantom section, with the arms oriented parallel to the body axis.
- Feed Point Impedance and Return Loss:** These parameters are measured with the dipole positioned under the liquid filled phantom. The impedance stated is transformed from the measurement at the SMA connector to the feed point. The Return Loss ensures low reflected power. No uncertainty required.
- Electrical Delay:** One-way delay between the SMA connector and the antenna feed point. No uncertainty required.
- SAR measured:** SAR measured at the stated antenna input power.
- SAR normalized:** SAR as measured, normalized to an input power of 1 W at the antenna connector.
- SAR for nominal TSL parameters:** The measured TSL parameters are used to calculate the nominal SAR result.

The reported uncertainty of measurement is stated as the standard uncertainty of measurement multiplied by the coverage factor  $k=2$ , which for a normal distribution corresponds to a coverage probability of approximately 95%.

### Head TSL parameters at 5600 MHz

The following parameters and calculations were applied.

	Temperature	Permittivity	Conductivity
Nominal Head TSL parameters	22.0 °C	35.5	5.07 mho/m
Measured Head TSL parameters	(22.0 ± 0.2) °C	34.7 ± 6 %	4.85 mho/m ± 6 %
Head TSL temperature change during test	< 0.5 °C	----	----

### SAR result with Head TSL at 5600 MHz

<b>SAR averaged over 1 cm<sup>3</sup> (1 g) of Head TSL</b>	Condition	
SAR measured	100 mW input power	8.64 W/kg
SAR for nominal Head TSL parameters	normalized to 1W	<b>85.8 W/kg ± 19.9 % (k=2)</b>

<b>SAR averaged over 10 cm<sup>3</sup> (10 g) of Head TSL</b>	condition	
SAR measured	100 mW input power	2.47 W/kg
SAR for nominal Head TSL parameters	normalized to 1W	<b>24.5 W/kg ± 19.5 % (k=2)</b>

### Head TSL parameters at 5750 MHz

The following parameters and calculations were applied.

	Temperature	Permittivity	Conductivity
Nominal Head TSL parameters	22.0 °C	35.4	5.22 mho/m
Measured Head TSL parameters	(22.0 ± 0.2) °C	34.5 ± 6 %	5.00 mho/m ± 6 %
Head TSL temperature change during test	< 0.5 °C	----	----

### SAR result with Head TSL at 5750 MHz

<b>SAR averaged over 1 cm<sup>3</sup> (1 g) of Head TSL</b>	Condition	
SAR measured	100 mW input power	8.21 W/kg
SAR for nominal Head TSL parameters	normalized to 1W	<b>81.5 W/kg ± 19.9 % (k=2)</b>

<b>SAR averaged over 10 cm<sup>3</sup> (10 g) of Head TSL</b>	condition	
SAR measured	100 mW input power	2.34 W/kg
SAR for nominal Head TSL parameters	normalized to 1W	<b>23.2 W/kg ± 19.5 % (k=2)</b>

## Measurement Conditions

DASY system configuration, as far as not given on page 1.

<b>DASY Version</b>	DASY5	V52.10.2
<b>Extrapolation</b>	Advanced Extrapolation	
<b>Phantom</b>	Modular Flat Phantom V5.0	
<b>Distance Dipole Center - TSL</b>	10 mm	with Spacer
<b>Zoom Scan Resolution</b>	dx, dy = 4.0 mm, dz = 1.4 mm	Graded Ratio = 1.4 (Z direction)
<b>Frequency</b>	5250 MHz $\pm$ 1 MHz 5600 MHz $\pm$ 1 MHz 5750 MHz $\pm$ 1 MHz	

## Head TSL parameters at 5250 MHz

The following parameters and calculations were applied.

	Temperature	Permittivity	Conductivity
<b>Nominal Head TSL parameters</b>	22.0 °C	35.9	4.71 mho/m
<b>Measured Head TSL parameters</b>	(22.0 $\pm$ 0.2) °C	35.2 $\pm$ 6 %	4.50 mho/m $\pm$ 6 %
<b>Head TSL temperature change during test</b>	< 0.5 °C	----	----

## SAR result with Head TSL at 5250 MHz

<b>SAR averaged over 1 cm<sup>3</sup> (1 g) of Head TSL</b>	Condition	
SAR measured	100 mW input power	8.12 W/kg
SAR for nominal Head TSL parameters	normalized to 1W	<b>80.7 W/kg <math>\pm</math> 19.9 % (k=2)</b>

<b>SAR averaged over 10 cm<sup>3</sup> (10 g) of Head TSL</b>	condition	
SAR measured	100 mW input power	2.34 W/kg
SAR for nominal Head TSL parameters	normalized to 1W	<b>23.2 W/kg <math>\pm</math> 19.5 % (k=2)</b>

## Body TSL parameters at 5250 MHz

The following parameters and calculations were applied.

	Temperature	Permittivity	Conductivity
Nominal Body TSL parameters	22.0 °C	48.9	5.36 mho/m
Measured Body TSL parameters	(22.0 ± 0.2) °C	46.8 ± 6 %	5.45 mho/m ± 6 %
Body TSL temperature change during test	< 0.5 °C	----	----

## SAR result with Body TSL at 5250 MHz

<b>SAR averaged over 1 cm<sup>3</sup> (1 g) of Body TSL</b>	Condition	
SAR measured	100 mW input power	7.54 W/kg
SAR for nominal Body TSL parameters	normalized to 1W	<b>74.8 W/kg ± 19.9 % (k=2)</b>

<b>SAR averaged over 10 cm<sup>3</sup> (10 g) of Body TSL</b>	condition	
SAR measured	100 mW input power	2.11 W/kg
SAR for nominal Body TSL parameters	normalized to 1W	<b>20.9 W/kg ± 19.5 % (k=2)</b>

## Body TSL parameters at 5600 MHz

The following parameters and calculations were applied.

	Temperature	Permittivity	Conductivity
Nominal Body TSL parameters	22.0 °C	48.5	5.77 mho/m
Measured Body TSL parameters	(22.0 ± 0.2) °C	46.2 ± 6 %	5.92 mho/m ± 6 %
Body TSL temperature change during test	< 0.5 °C	----	----

## SAR result with Body TSL at 5600 MHz

<b>SAR averaged over 1 cm<sup>3</sup> (1 g) of Body TSL</b>	Condition	
SAR measured	100 mW input power	7.80 W/kg
SAR for nominal Body TSL parameters	normalized to 1W	<b>77.3 W/kg ± 19.9 % (k=2)</b>

<b>SAR averaged over 10 cm<sup>3</sup> (10 g) of Body TSL</b>	condition	
SAR measured	100 mW input power	2.18 W/kg
SAR for nominal Body TSL parameters	normalized to 1W	<b>21.5 W/kg ± 19.5 % (k=2)</b>

## Body TSL parameters at 5750 MHz

The following parameters and calculations were applied.

	Temperature	Permittivity	Conductivity
Nominal Body TSL parameters	22.0 °C	48.3	5.94 mho/m
Measured Body TSL parameters	(22.0 ± 0.2) °C	46.0 ± 6 %	6.13 mho/m ± 6 %
Body TSL temperature change during test	< 0.5 °C	----	----

## SAR result with Body TSL at 5750 MHz

<b>SAR averaged over 1 cm<sup>3</sup> (1 g) of Body TSL</b>	Condition	
SAR measured	100 mW input power	7.62 W/kg
SAR for nominal Body TSL parameters	normalized to 1W	<b>75.5 W/kg ± 19.9 % (k=2)</b>

<b>SAR averaged over 10 cm<sup>3</sup> (10 g) of Body TSL</b>	condition	
SAR measured	100 mW input power	2.12 W/kg
SAR for nominal Body TSL parameters	normalized to 1W	<b>21.0 W/kg ± 19.5 % (k=2)</b>

## Appendix (Additional assessments outside the scope of SCS 0108)

### Antenna Parameters with Head TSL at 5250 MHz

Impedance, transformed to feed point	52.3 $\Omega$ - 5.8 j $\Omega$
Return Loss	- 24.3 dB

### Antenna Parameters with Head TSL at 5600 MHz

Impedance, transformed to feed point	56.8 $\Omega$ - 1.1 j $\Omega$
Return Loss	- 23.8 dB

### Antenna Parameters with Head TSL at 5750 MHz

Impedance, transformed to feed point	58.3 $\Omega$ + 3.2 j $\Omega$
Return Loss	- 21.7 dB

### Antenna Parameters with Body TSL at 5250 MHz

Impedance, transformed to feed point	52.5 $\Omega$ - 3.7 j $\Omega$
Return Loss	- 27.3 dB

### Antenna Parameters with Body TSL at 5600 MHz

Impedance, transformed to feed point	58.1 $\Omega$ - 1.2 j $\Omega$
Return Loss	- 22.4 dB

### Antenna Parameters with Body TSL at 5750 MHz

Impedance, transformed to feed point	58.7 $\Omega$ + 4.8 j $\Omega$
Return Loss	- 20.8 dB

### General Antenna Parameters and Design

Electrical Delay (one direction)	1.204 ns
----------------------------------	----------

After long term use with 100W radiated power, only a slight warming of the dipole near the feedpoint can be measured.

The dipole is made of standard semirigid coaxial cable. The center conductor of the feeding line is directly connected to the second arm of the dipole. The antenna is therefore short-circuited for DC-signals. On some of the dipoles, small end caps are added to the dipole arms in order to improve matching when loaded according to the position as explained in the "Measurement Conditions" paragraph. The SAR data are not affected by this change. The overall dipole length is still according to the Standard.

No excessive force must be applied to the dipole arms, because they might bend or the soldered connections near the feedpoint may be damaged.

### Additional EUT Data

Manufactured by	SPEAG
-----------------	-------

## DASY5 Validation Report for Head TSL

Date: 21.03.2019

Test Laboratory: SPEAG, Zurich, Switzerland

### DUT: Dipole D5GHzV2; Type: D5GHzV2; Serial: D5GHzV2 - SN:1019

Communication System: UID 0 - CW; Frequency: 5250 MHz, Frequency: 5600 MHz, Frequency: 5750 MHz

Medium parameters used:  $f = 5250$  MHz;  $\sigma = 4.5$  S/m;  $\epsilon_r = 35.2$ ;  $\rho = 1000$  kg/m<sup>3</sup>,

Medium parameters used:  $f = 5600$  MHz;  $\sigma = 4.85$  S/m;  $\epsilon_r = 34.7$ ;  $\rho = 1000$  kg/m<sup>3</sup>,

Medium parameters used:  $f = 5750$  MHz;  $\sigma = 5$  S/m;  $\epsilon_r = 34.5$ ;  $\rho = 1000$  kg/m<sup>3</sup>

Phantom section: Flat Section

Measurement Standard: DASY5 (IEEE/IEC/ANSI C63.19-2011)

#### DASY52 Configuration:

- Probe: EX3DV4 - SN3503; ConvF(5.4, 5.4, 5.4) @ 5250 MHz, ConvF(4.95, 4.95, 4.95) @ 5600 MHz, ConvF(4.98, 4.98, 4.98) @ 5750 MHz; Calibrated: 31.12.2018
- Sensor-Surface: 1.4mm (Mechanical Surface Detection)
- Electronics: DAE4 Sn601; Calibrated: 04.10.2018
- Phantom: Flat Phantom 5.0 (front); Type: QD 000 P50 AA; Serial: 1001
- DASY52 52.10.2(1495); SEMCAD X 14.6.12(7450)

#### **Dipole Calibration for Head Tissue/Pin=100mW, dist=10mm, f=5250 MHz/Zoom Scan, dist=1.4mm (8x8x7)/Cube 0:**

Measurement grid: dx=4mm, dy=4mm, dz=1.4mm

Reference Value = 78.16 V/m; Power Drift = 0.09 dB

Peak SAR (extrapolated) = 28.1 W/kg

**SAR(1 g) = 8.12 W/kg; SAR(10 g) = 2.34 W/kg**

Maximum value of SAR (measured) = 18.1 W/kg

#### **Dipole Calibration for Head Tissue/Pin=100mW, dist=10mm, f=5600 MHz/Zoom Scan, dist=1.4mm (8x8x7)/Cube 0:**

Measurement grid: dx=4mm, dy=4mm, dz=1.4mm

Reference Value = 77.63 V/m; Power Drift = 0.06 dB

Peak SAR (extrapolated) = 32.2 W/kg

**SAR(1 g) = 8.64 W/kg; SAR(10 g) = 2.47 W/kg**

Maximum value of SAR (measured) = 19.7 W/kg

#### **Dipole Calibration for Head Tissue/Pin=100mW, dist=10mm, f=5750 MHz/Zoom Scan, dist=1.4mm (8x8x7)/Cube 0:**

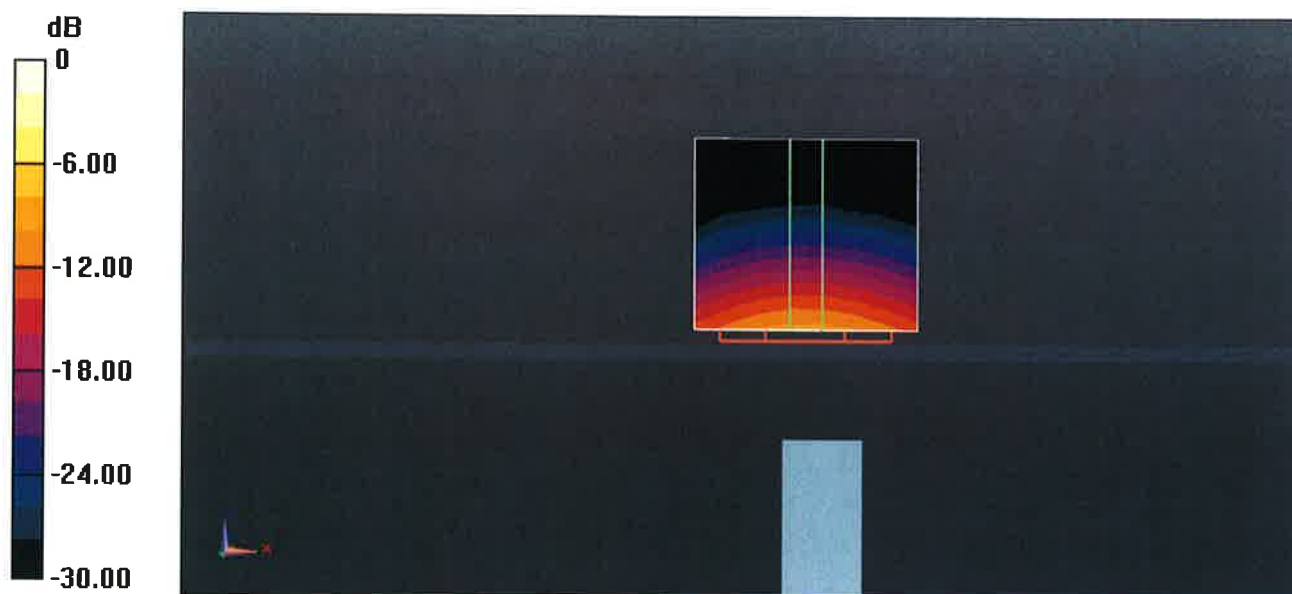
Measurement grid: dx=4mm, dy=4mm, dz=1.4mm

Reference Value = 74.85 V/m; Power Drift = 0.07 dB

Peak SAR (extrapolated) = 32.4 W/kg

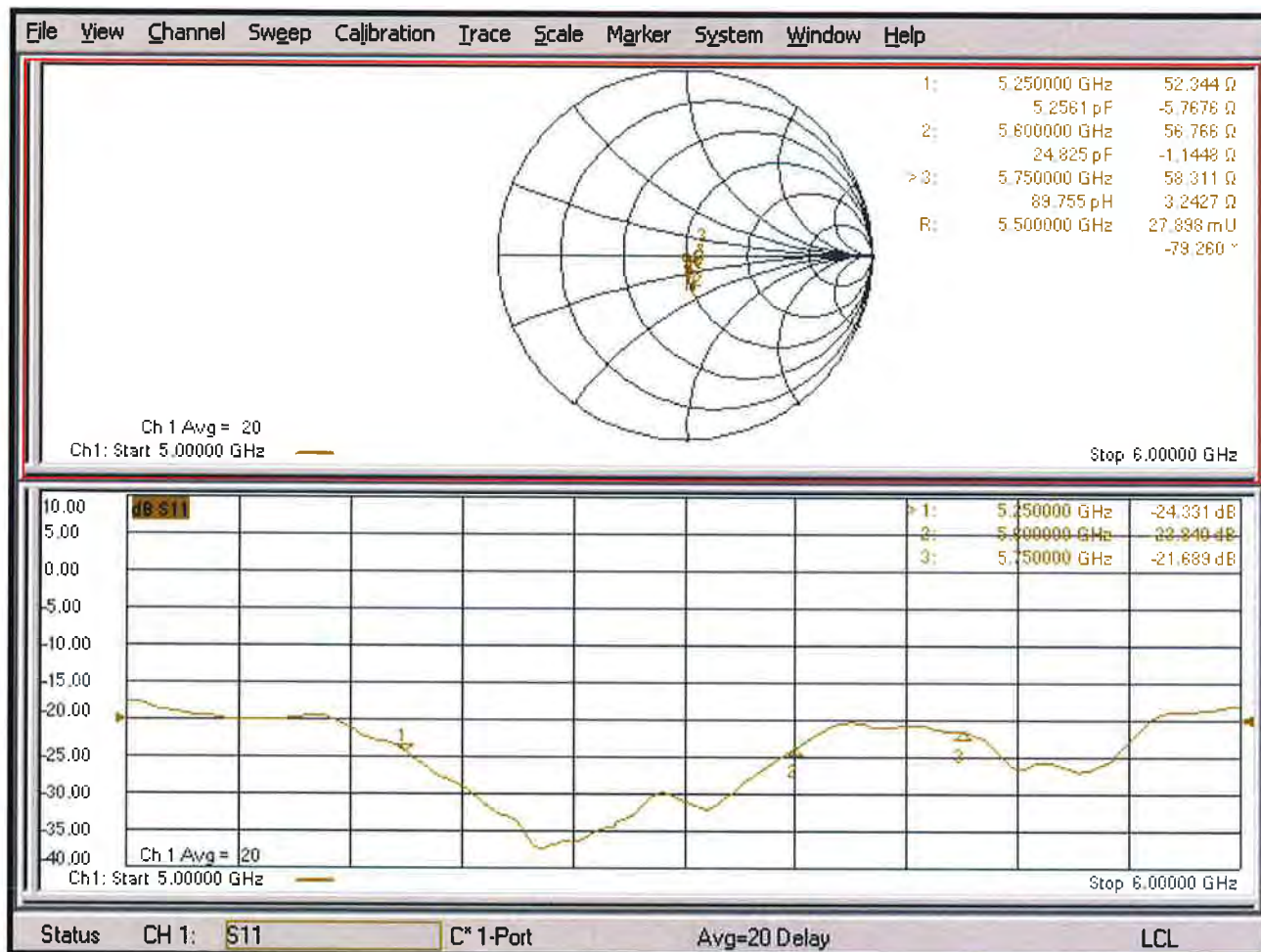
**SAR(1 g) = 8.21 W/kg; SAR(10 g) = 2.34 W/kg**

Maximum value of SAR (measured) = 19.1 W/kg



0 dB = 19.1 W/kg = 12.81 dBW/kg

## Impedance Measurement Plot for Head TSL



## DASY5 Validation Report for Body TSL

Date: 20.03.2019

Test Laboratory: SPEAG, Zurich, Switzerland

**DUT: Dipole D5GHzV2; Type: D5GHzV2; Serial: D5GHzV2 - SN:1019**

Communication System: UID 0 - CW; Frequency: 5250 MHz, Frequency: 5600 MHz, Frequency: 5750 MHz

Medium parameters used:  $f = 5250$  MHz;  $\sigma = 5.45$  S/m;  $\epsilon_r = 46.8$ ;  $\rho = 1000$  kg/m<sup>3</sup>,

Medium parameters used:  $f = 5600$  MHz;  $\sigma = 5.92$  S/m;  $\epsilon_r = 46.2$ ;  $\rho = 1000$  kg/m<sup>3</sup>,

Medium parameters used:  $f = 5750$  MHz;  $\sigma = 6.13$  S/m;  $\epsilon_r = 46$ ;  $\rho = 1000$  kg/m<sup>3</sup>

Phantom section: Flat Section

Measurement Standard: DASY5 (IEEE/IEC/ANSI C63.19-2011)

DASY52 Configuration:

- Probe: EX3DV4 - SN3503testing; ConvF(5.26, 5.26, 5.26) @ 5250 MHz, ConvF(4.7, 4.7, 4.7) @ 5600 MHz, ConvF(4.59, 4.59, 4.59) @ 5750 MHz; Calibrated: 31.12.2018
- Sensor-Surface: 1.4mm (Mechanical Surface Detection)
- Electronics: DAE4 Sn601; Calibrated: 04.10.2018
- Phantom: Flat Phantom 5.0 (back); Type: QD 000 P50 AA; Serial: 1002
- DASY52 52.10.2(1495); SEMCAD X 14.6.12(7450)

**Dipole Calibration for Body Tissue/Pin=100mW, dist=10mm, f=5250 MHz/Zoom Scan, dist=1.4mm (8x8x7)/Cube 0:** Measurement grid: dx=4mm, dy=4mm, dz=1.4mm

Reference Value = 69.09 V/m; Power Drift = -0.05 dB

Peak SAR (extrapolated) = 29.2 W/kg

**SAR(1 g) = 7.54 W/kg; SAR(10 g) = 2.11 W/kg**

Maximum value of SAR (measured) = 17.2 W/kg

**Dipole Calibration for Body Tissue/Pin=100mW, dist=10mm, f=5600 MHz/Zoom Scan, dist=1.4mm (8x8x7)/Cube 0:** Measurement grid: dx=4mm, dy=4mm, dz=1.4mm

Reference Value = 68.10 V/m; Power Drift = -0.00 dB

Peak SAR (extrapolated) = 33.4 W/kg

**SAR(1 g) = 7.8 W/kg; SAR(10 g) = 2.18 W/kg**

Maximum value of SAR (measured) = 18.5 W/kg

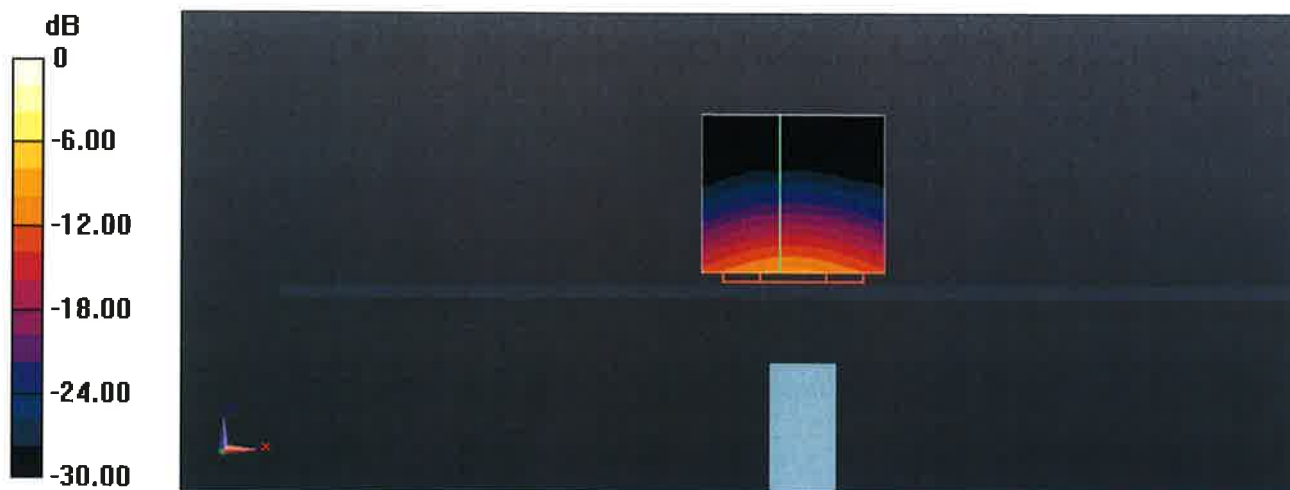
**Dipole Calibration for Body Tissue/Pin=100mW, dist=10mm, f=5750 MHz/Zoom Scan, dist=1.4mm (8x8x7)/Cube 0:** Measurement grid: dx=4mm, dy=4mm, dz=1.4mm

Reference Value = 66.59 V/m; Power Drift = 0.03 dB

Peak SAR (extrapolated) = 34.1 W/kg

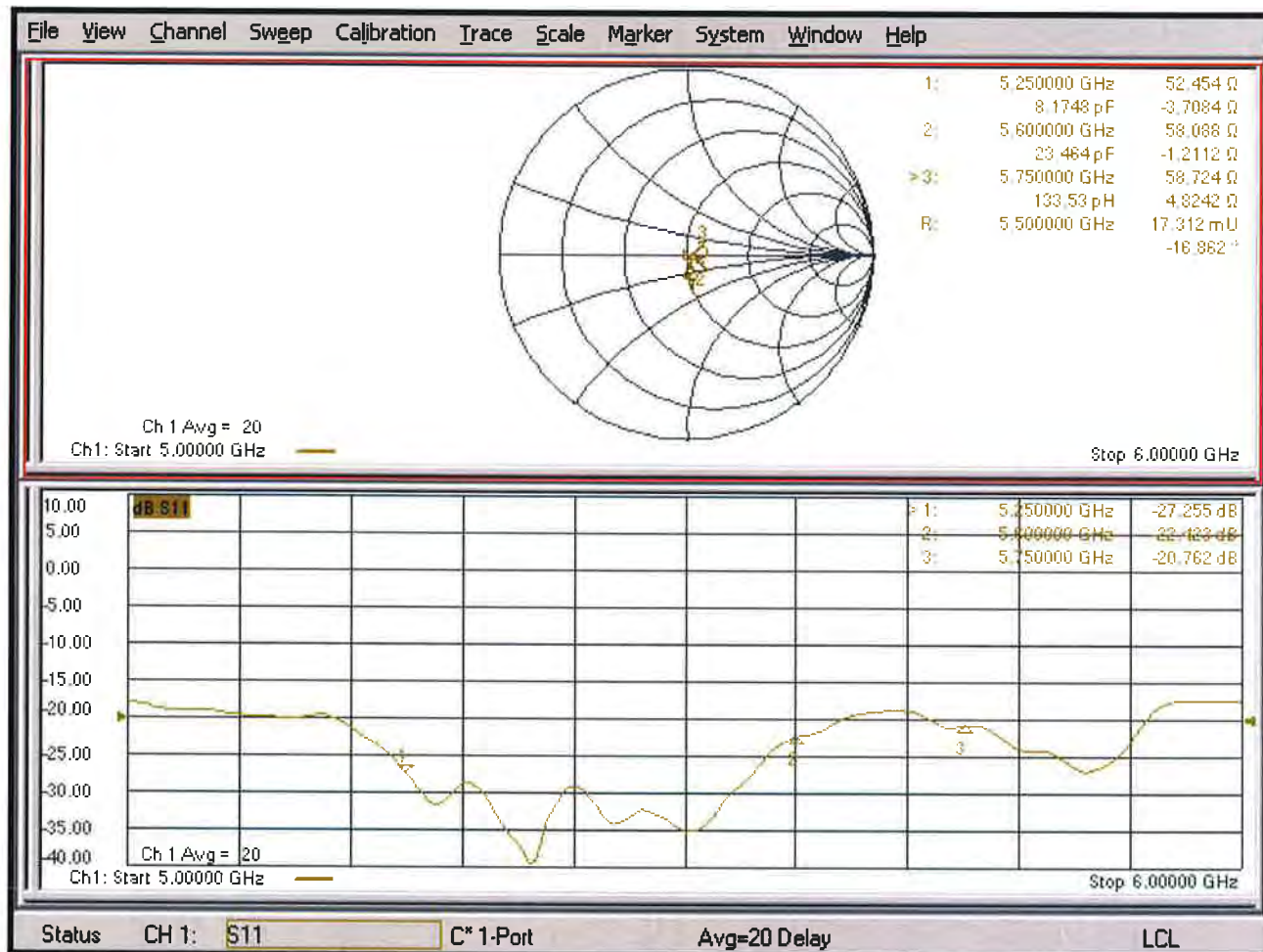
**SAR(1 g) = 7.62 W/kg; SAR(10 g) = 2.12 W/kg**

Maximum value of SAR (measured) = 18.3 W/kg



0 dB = 17.2 W/kg = 12.36 dBW/kg

## Impedance Measurement Plot for Body TSL





Accredited by the Swiss Accreditation Service (SAS)

The Swiss Accreditation Service is one of the signatories to the EA  
Multilateral Agreement for the recognition of calibration certificates

Accreditation No.: **SCS 0108**

Client **Auden**

Certificate No: **EX3-7375\_Dec18**

## CALIBRATION CERTIFICATE

Object **EX3DV4 - SN:7375**

Calibration procedure(s) **QA CAL-01.v9, QA CAL-14.v4, QA CAL-23.v5, QA CAL-25.v6**  
**Calibration procedure for dosimetric E-field probes**

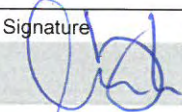
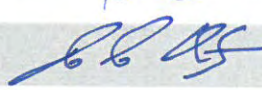
Calibration date: **December 13, 2018**

This calibration certificate documents the traceability to national standards, which realize the physical units of measurements (SI).  
The measurements and the uncertainties with confidence probability are given on the following pages and are part of the certificate.

All calibrations have been conducted in the closed laboratory facility: environment temperature  $(22 \pm 3)^{\circ}\text{C}$  and humidity  $< 70\%$ .

Calibration Equipment used (M&TE critical for calibration)

Primary Standards	ID	Cal Date (Certificate No.)	Scheduled Calibration
Power meter NRP	SN: 104778	04-Apr-18 (No. 217-02672/02673)	Apr-19
Power sensor NRP-Z91	SN: 103244	04-Apr-18 (No. 217-02672)	Apr-19
Power sensor NRP-Z91	SN: 103245	04-Apr-18 (No. 217-02673)	Apr-19
Reference 20 dB Attenuator	SN: S5277 (20x)	04-Apr-18 (No. 217-02682)	Apr-19
Reference Probe ES3DV2	SN: 3013	30-Dec-17 (No. ES3-3013_Dec17)	Dec-18
DAE4	SN: 660	21-Dec-17 (No. DAE4-660_Dec17)	Dec-18
Secondary Standards	ID	Check Date (in house)	Scheduled Check
Power meter E4419B	SN: GB41293874	06-Apr-16 (in house check Jun-18)	In house check: Jun-20
Power sensor E4412A	SN: MY41498087	06-Apr-16 (in house check Jun-18)	In house check: Jun-20
Power sensor E4412A	SN: 000110210	06-Apr-16 (in house check Jun-18)	In house check: Jun-20
RF generator HP 8648C	SN: US3642U01700	04-Aug-99 (in house check Jun-18)	In house check: Jun-20
Network Analyzer E8358A	SN: US41080477	31-Mar-14 (in house check Oct-18)	In house check: Oct-19

Calibrated by:	Name <b>Claudio Leubler</b>	Function <b>Laboratory Technician</b>	Signature 
Approved by:	<b>Katja Pokovic</b>	<b>Technical Manager</b>	
This calibration certificate shall not be reproduced except in full without written approval of the laboratory.			
Issued: December 15, 2018			



Accredited by the Swiss Accreditation Service (SAS)

The Swiss Accreditation Service is one of the signatories to the EA  
 Multilateral Agreement for the recognition of calibration certificates

Accreditation No.: **SCS 0108**

## Glossary:

TSL	tissue simulating liquid
NORM <sub>x,y,z</sub>	sensitivity in free space
ConvF	sensitivity in TSL / NORM <sub>x,y,z</sub>
DCP	diode compression point
CF	crest factor (1/duty_cycle) of the RF signal
A, B, C, D	modulation dependent linearization parameters
Polarization $\varphi$	$\varphi$ rotation around probe axis
Polarization $\vartheta$	$\vartheta$ rotation around an axis that is in the plane normal to probe axis (at measurement center), i.e., $\vartheta = 0$ is normal to probe axis
Connector Angle	information used in DASY system to align probe sensor X to the robot coordinate system

## Calibration is Performed According to the Following Standards:

- IEEE Std 1528-2013, "IEEE Recommended Practice for Determining the Peak Spatial-Averaged Specific Absorption Rate (SAR) in the Human Head from Wireless Communications Devices: Measurement Techniques", June 2013
- IEC 62209-1, "Measurement procedure for the assessment of Specific Absorption Rate (SAR) from hand-held and body-mounted devices used next to the ear (frequency range of 300 MHz to 6 GHz)", July 2016
- IEC 62209-2, "Procedure to determine the Specific Absorption Rate (SAR) for wireless communication devices used in close proximity to the human body (frequency range of 30 MHz to 6 GHz)", March 2010
- KDB 865664, "SAR Measurement Requirements for 100 MHz to 6 GHz"

## Methods Applied and Interpretation of Parameters:

- NORM<sub>x,y,z</sub>**: Assessed for E-field polarization  $\vartheta = 0$  ( $f \leq 900$  MHz in TEM-cell;  $f > 1800$  MHz: R22 waveguide). NORM<sub>x,y,z</sub> are only intermediate values, i.e., the uncertainties of NORM<sub>x,y,z</sub> does not affect the  $E^2$ -field uncertainty inside TSL (see below ConvF).
- NORM(f)<sub>x,y,z</sub>** = NORM<sub>x,y,z</sub> \* frequency\_response (see Frequency Response Chart). This linearization is implemented in DASY4 software versions later than 4.2. The uncertainty of the frequency response is included in the stated uncertainty of ConvF.
- DCP<sub>x,y,z</sub>**: DCP are numerical linearization parameters assessed based on the data of power sweep with CW signal (no uncertainty required). DCP does not depend on frequency nor media.
- PAR**: PAR is the Peak to Average Ratio that is not calibrated but determined based on the signal characteristics
- A<sub>x,y,z</sub>; B<sub>x,y,z</sub>; C<sub>x,y,z</sub>; D<sub>x,y,z</sub>; VR<sub>x,y,z</sub>**: A, B, C, D are numerical linearization parameters assessed based on the data of power sweep for specific modulation signal. The parameters do not depend on frequency nor media. VR is the maximum calibration range expressed in RMS voltage across the diode.
- ConvF and Boundary Effect Parameters**: Assessed in flat phantom using E-field (or Temperature Transfer Standard for  $f \leq 800$  MHz) and inside waveguide using analytical field distributions based on power measurements for  $f > 800$  MHz. The same setups are used for assessment of the parameters applied for boundary compensation (alpha, depth) of which typical uncertainty values are given. These parameters are used in DASY4 software to improve probe accuracy close to the boundary. The sensitivity in TSL corresponds to NORM<sub>x,y,z</sub> \* ConvF whereby the uncertainty corresponds to that given for ConvF. A frequency dependent ConvF is used in DASY version 4.4 and higher which allows extending the validity from  $\pm 50$  MHz to  $\pm 100$  MHz.
- Spherical isotropy (3D deviation from isotropy)**: in a field of low gradients realized using a flat phantom exposed by a patch antenna.
- Sensor Offset**: The sensor offset corresponds to the offset of virtual measurement center from the probe tip (on probe axis). No tolerance required.
- Connector Angle**: The angle is assessed using the information gained by determining the NORM<sub>x</sub> (no uncertainty required).

# Probe EX3DV4

## SN:7375

Manufactured: April 13, 2015  
Calibrated: December 13, 2018

Calibrated for DASY/EASY Systems  
(Note: non-compatible with DASY2 system!)

## DASY/EASY - Parameters of Probe: EX3DV4 - SN:7375

### Basic Calibration Parameters

	Sensor X	Sensor Y	Sensor Z	Unc (k=2)
Norm ( $\mu\text{V}/(\text{V}/\text{m})^2$ ) <sup>A</sup>	0.50	0.42	0.46	$\pm 10.1 \%$
DCP (mV) <sup>B</sup>	99.7	99.5	99.8	

### Modulation Calibration Parameters

UID	Communication System Name		A dB	B dB $\sqrt{\mu\text{V}}$	C	D dB	VR mV	Unc <sup>E</sup> (k=2)
0	CW	X	0.0	0.0	1.0	0.00	162.8	$\pm 3.3 \%$
		Y	0.0	0.0	1.0		162.4	
		Z	0.0	0.0	1.0		176.7	

Note: For details on UID parameters see Appendix.

### Sensor Model Parameters

	C1 fF	C2 fF	$\alpha$ $\text{V}^{-1}$	T1 $\text{ms}\cdot\text{V}^{-2}$	T2 $\text{ms}\cdot\text{V}^{-1}$	T3 ms	T4 $\text{V}^{-2}$	T5 $\text{V}^{-1}$	T6
X	49.17	370.4	36.49	10.04	0.092	5.100	1.852	0.214	1.010
Y	33.20	261.0	38.89	2.699	0.121	5.052	0.000	0.162	1.015
Z	41.99	314.1	35.78	7.410	0.109	5.054	1.240	0.205	1.005

The reported uncertainty of measurement is stated as the standard uncertainty of measurement multiplied by the coverage factor  $k=2$ , which for a normal distribution corresponds to a coverage probability of approximately 95%.

<sup>A</sup> The uncertainties of Norm X,Y,Z do not affect the  $E^2$ -field uncertainty inside TSL (see Pages 5 and 6).

<sup>B</sup> Numerical linearization parameter: uncertainty not required.

<sup>E</sup> Uncertainty is determined using the max. deviation from linear response applying rectangular distribution and is expressed for the square of the field value.

## DASY/EASY - Parameters of Probe: EX3DV4 - SN:7375

### Calibration Parameter Determined in Head Tissue Simulating Media

f (MHz) <sup>C</sup>	Relative Permittivity <sup>F</sup>	Conductivity (S/m) <sup>F</sup>	ConvF X	ConvF Y	ConvF Z	Alpha <sup>G</sup>	Depth <sup>G</sup> (mm)	Unc (k=2)
750	41.9	0.89	10.35	10.35	10.35	0.40	0.94	± 12.0 %
835	41.5	0.90	10.13	10.13	10.13	0.50	0.81	± 12.0 %
900	41.5	0.97	9.83	9.83	9.83	0.44	0.84	± 12.0 %
1450	40.5	1.20	8.93	8.93	8.93	0.47	0.80	± 12.0 %
1750	40.1	1.37	8.58	8.58	8.58	0.39	0.84	± 12.0 %
1900	40.0	1.40	8.26	8.26	8.26	0.34	0.85	± 12.0 %
2000	40.0	1.40	8.19	8.19	8.19	0.33	0.84	± 12.0 %
2300	39.5	1.67	7.79	7.79	7.79	0.31	0.85	± 12.0 %
2450	39.2	1.80	7.64	7.64	7.64	0.34	0.86	± 12.0 %
2600	39.0	1.96	7.42	7.42	7.42	0.36	0.85	± 12.0 %
3500	37.9	2.91	7.20	7.20	7.20	0.28	1.20	± 13.1 %
3700	37.7	3.12	7.06	7.06	7.06	0.25	1.20	± 13.1 %
3900	37.5	3.32	6.96	6.96	6.96	0.25	1.80	± 13.1 %
4600	36.7	4.04	6.74	6.74	6.74	0.25	1.80	± 13.1 %
5250	35.9	4.71	5.29	5.29	5.29	0.40	1.80	± 13.1 %
5600	35.5	5.07	4.69	4.69	4.69	0.40	1.80	± 13.1 %
5750	35.4	5.22	4.85	4.85	4.85	0.40	1.80	± 13.1 %

<sup>C</sup> Frequency validity above 300 MHz of ± 100 MHz only applies for DASY v4.4 and higher (see Page 2), else it is restricted to ± 50 MHz. The uncertainty is the RSS of the ConvF uncertainty at calibration frequency and the uncertainty for the indicated frequency band. Frequency validity below 300 MHz is ± 10, 25, 40, 50 and 70 MHz for ConvF assessments at 30, 64, 128, 150 and 220 MHz respectively. Above 5 GHz frequency validity can be extended to ± 110 MHz.

<sup>F</sup> At frequencies below 3 GHz, the validity of tissue parameters ( $\epsilon$  and  $\sigma$ ) can be relaxed to ± 10% if liquid compensation formula is applied to measured SAR values. At frequencies above 3 GHz, the validity of tissue parameters ( $\epsilon$  and  $\sigma$ ) is restricted to ± 5%. The uncertainty is the RSS of the ConvF uncertainty for indicated target tissue parameters.

<sup>G</sup> Alpha/Depth are determined during calibration. SPEAG warrants that the remaining deviation due to the boundary effect after compensation is always less than ± 1% for frequencies below 3 GHz and below ± 2% for frequencies between 3-6 GHz at any distance larger than half the probe tip diameter from the boundary.

## DASY/EASY - Parameters of Probe: EX3DV4 - SN:7375

### Calibration Parameter Determined in Body Tissue Simulating Media

f (MHz) <sup>C</sup>	Relative Permittivity <sup>F</sup>	Conductivity (S/m) <sup>F</sup>	ConvF X	ConvF Y	ConvF Z	Alpha <sup>G</sup>	Depth <sup>G</sup> (mm)	Unc (k=2)
750	55.5	0.96	10.52	10.52	10.52	0.47	0.80	± 12.0 %
835	55.2	0.97	10.18	10.18	10.18	0.46	0.80	± 12.0 %
900	55.0	1.05	9.93	9.93	9.93	0.45	0.81	± 12.0 %
1450	54.0	1.30	8.75	8.75	8.75	0.38	0.80	± 12.0 %
1750	53.4	1.49	8.56	8.56	8.56	0.44	0.88	± 12.0 %
1900	53.3	1.52	8.20	8.20	8.20	0.38	0.89	± 12.0 %
2000	53.3	1.52	8.14	8.14	8.14	0.27	1.10	± 12.0 %
2300	52.9	1.81	7.69	7.69	7.69	0.45	0.83	± 12.0 %
2450	52.7	1.95	7.81	7.81	7.81	0.34	0.92	± 12.0 %
2600	52.5	2.16	7.53	7.53	7.53	0.24	1.05	± 12.0 %
3500	51.3	3.31	7.17	7.17	7.17	0.28	1.20	± 13.1 %
3700	51.0	3.55	6.98	6.98	6.98	0.20	1.25	± 13.1 %
3900	51.2	3.78	6.86	6.86	6.86	0.20	1.90	± 13.1 %
4600	49.8	4.60	6.73	6.73	6.73	0.20	1.90	± 13.1 %
5250	48.9	5.36	4.65	4.65	4.65	0.50	1.90	± 13.1 %
5600	48.5	5.77	4.00	4.00	4.00	0.50	1.90	± 13.1 %
5750	48.3	5.94	4.27	4.27	4.27	0.50	1.90	± 13.1 %

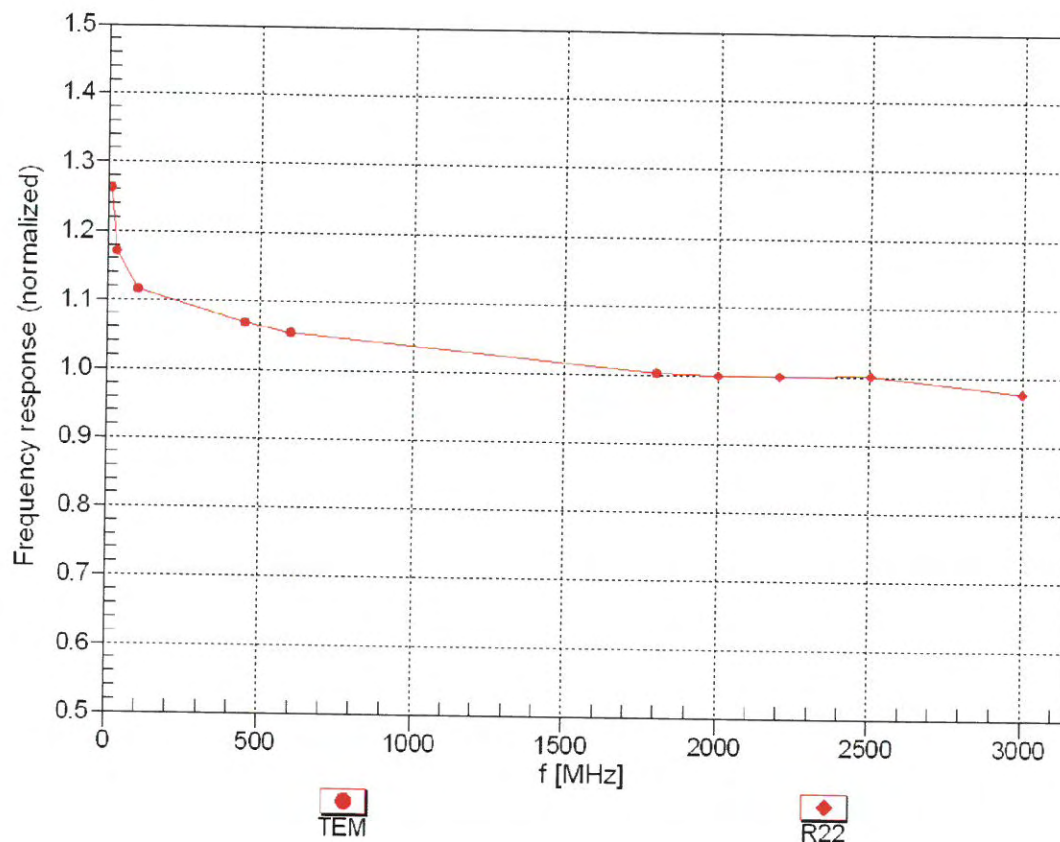
<sup>C</sup> Frequency validity above 300 MHz of ± 100 MHz only applies for DASY v4.4 and higher (see Page 2), else it is restricted to ± 50 MHz. The uncertainty is the RSS of the ConvF uncertainty at calibration frequency and the uncertainty for the indicated frequency band. Frequency validity below 300 MHz is ± 10, 25, 40, 50 and 70 MHz for ConvF assessments at 30, 64, 128, 150 and 220 MHz respectively. Above 5 GHz frequency validity can be extended to ± 110 MHz.

<sup>F</sup> At frequencies below 3 GHz, the validity of tissue parameters ( $\epsilon$  and  $\sigma$ ) can be relaxed to ± 10% if liquid compensation formula is applied to measured SAR values. At frequencies above 3 GHz, the validity of tissue parameters ( $\epsilon$  and  $\sigma$ ) is restricted to ± 5%. The uncertainty is the RSS of the ConvF uncertainty for indicated target tissue parameters.

<sup>G</sup> Alpha/Depth are determined during calibration. SPEAG warrants that the remaining deviation due to the boundary effect after compensation is always less than ± 1% for frequencies below 3 GHz and below ± 2% for frequencies between 3-6 GHz at any distance larger than half the probe tip diameter from the boundary.

## Frequency Response of E-Field

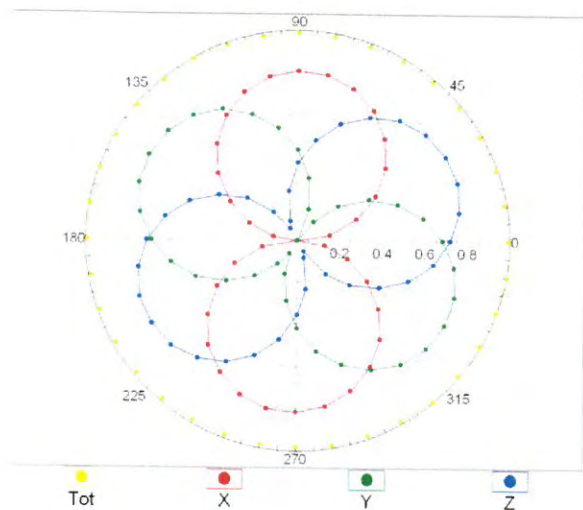
(TEM-Cell:ifi110 EXX, Waveguide: R22)



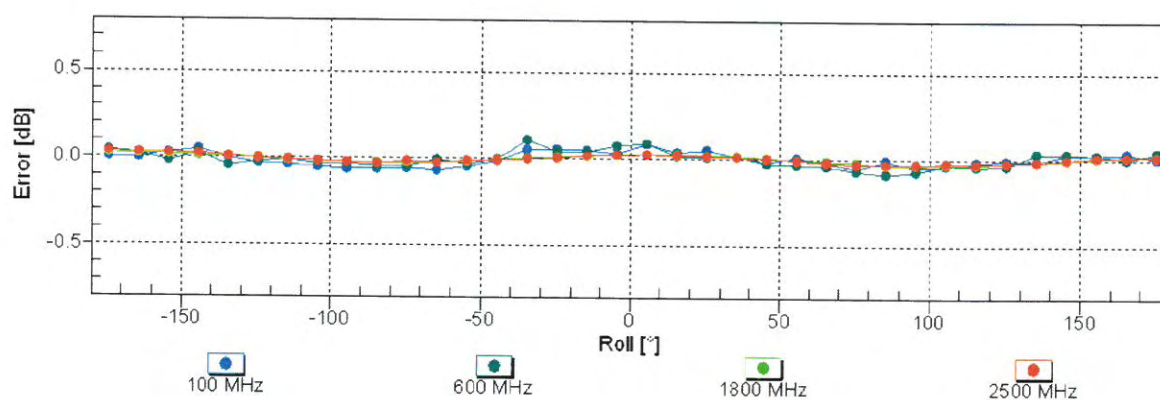
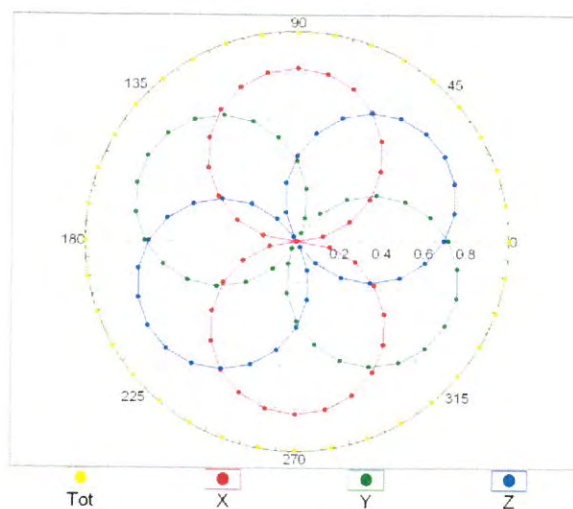
Uncertainty of Frequency Response of E-field:  $\pm 6.3\%$  ( $k=2$ )

## Receiving Pattern ( $\phi$ ), $\theta = 0^\circ$

f=600 MHz, TEM

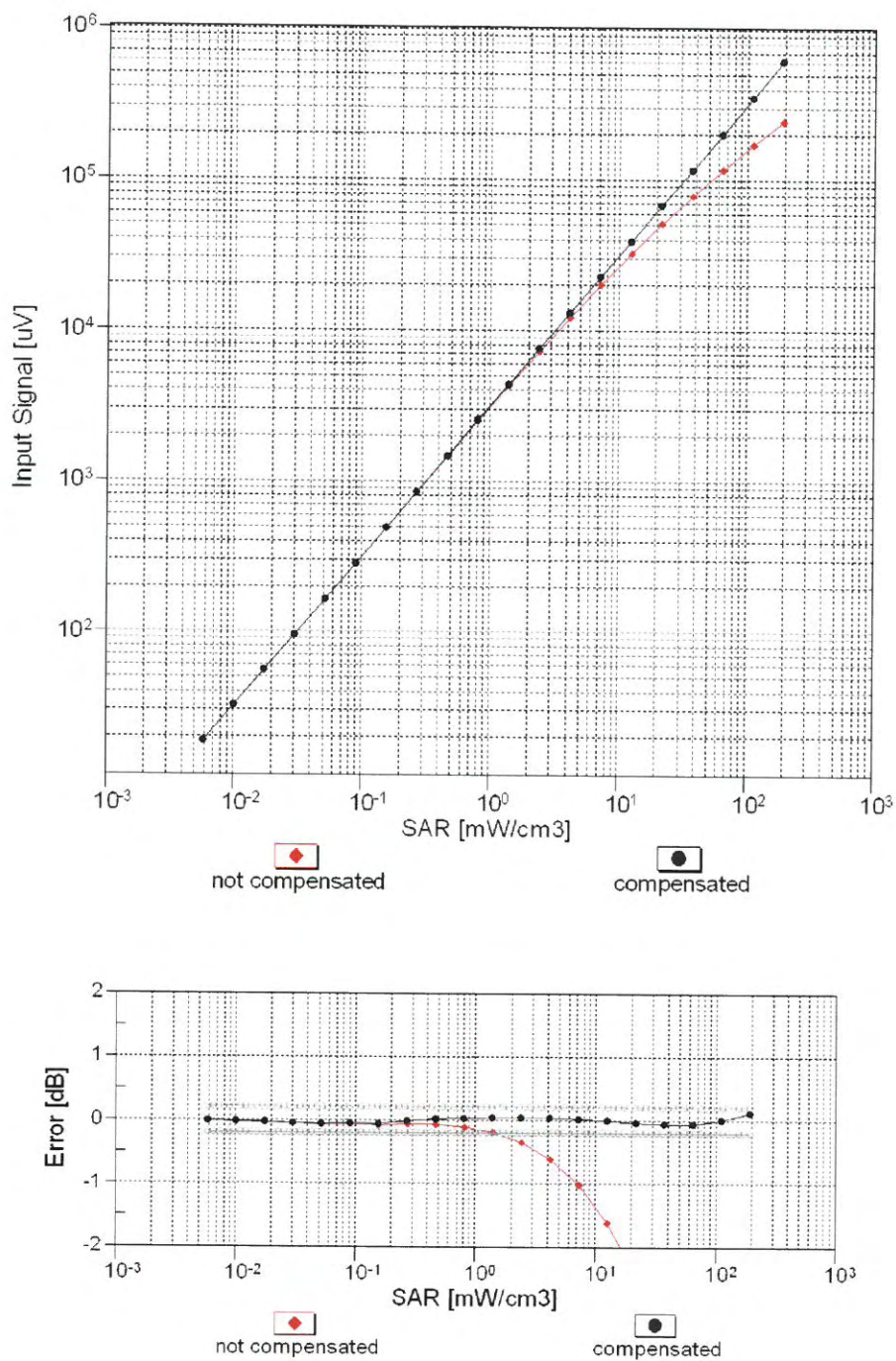


f=1800 MHz, R22



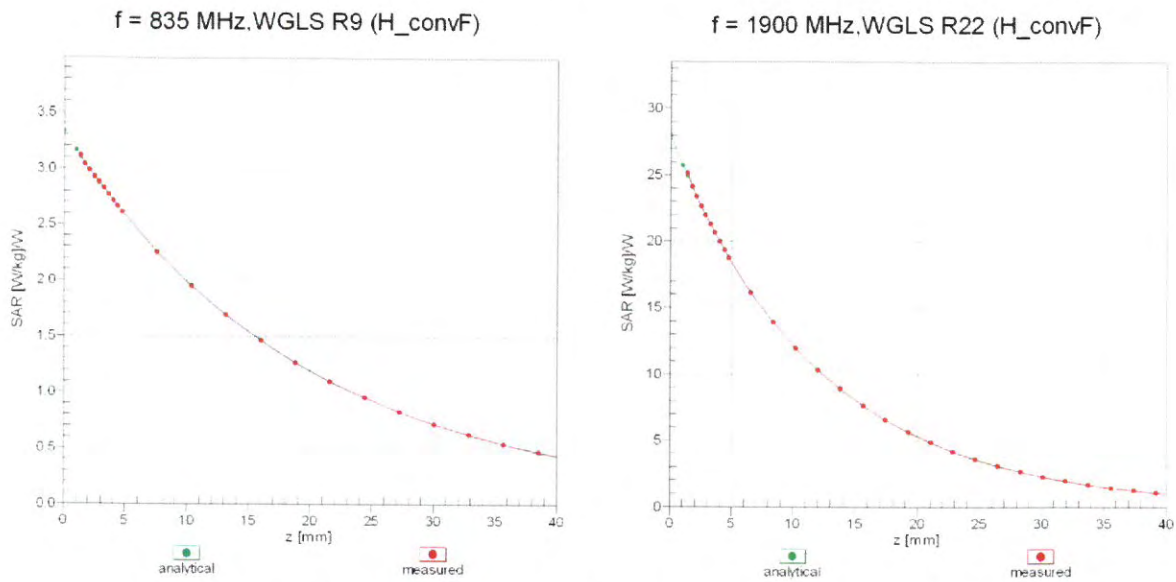
Uncertainty of Axial Isotropy Assessment:  $\pm 0.5\%$  ( $k=2$ )

## Dynamic Range $f(\text{SAR}_{\text{head}})$ (TEM cell, $f_{\text{eval}} = 1900 \text{ MHz}$ )

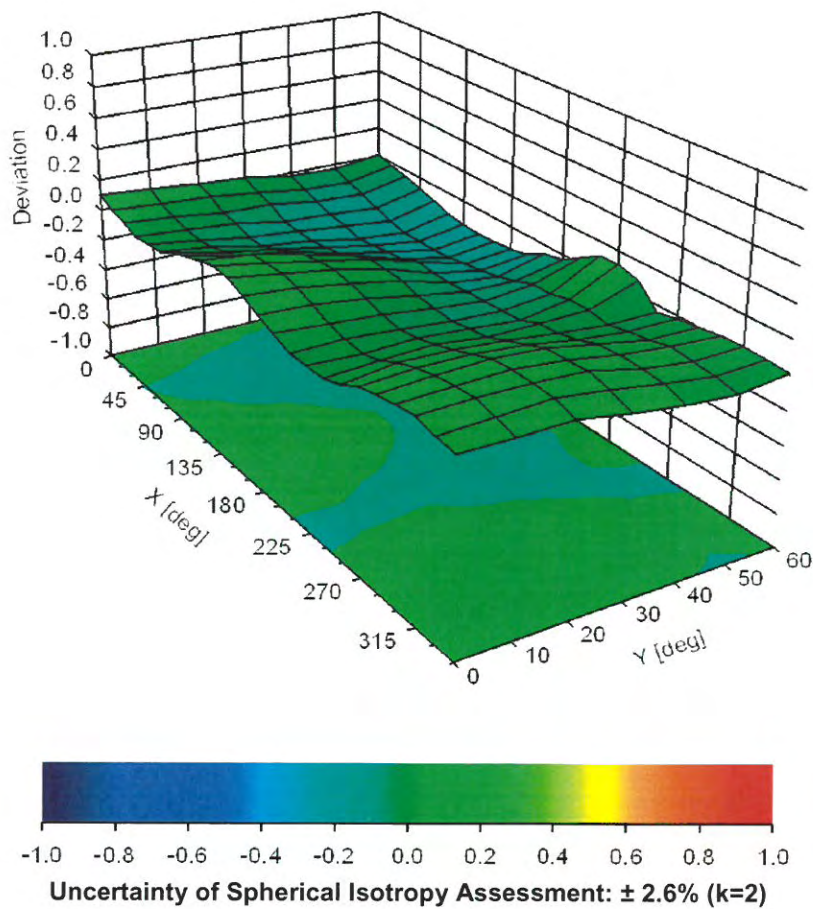


Uncertainty of Linearity Assessment:  $\pm 0.6\%$  ( $k=2$ )

# Conversion Factor Assessment



## Deviation from Isotropy in Liquid Error ( $\phi, \theta$ ), f = 900 MHz



## DASY/EASY - Parameters of Probe: EX3DV4 - SN:7375

### Other Probe Parameters

Sensor Arrangement	Triangular
Connector Angle (°)	15.4
Mechanical Surface Detection Mode	enabled
Optical Surface Detection Mode	disabled
Probe Overall Length	337 mm
Probe Body Diameter	10 mm
Tip Length	9 mm
Tip Diameter	2.5 mm
Probe Tip to Sensor X Calibration Point	1 mm
Probe Tip to Sensor Y Calibration Point	1 mm
Probe Tip to Sensor Z Calibration Point	1 mm
Recommended Measurement Distance from Surface	1.4 mm

**Appendix: Modulation Calibration Parameters**

UID	Communication System Name		A dB	B dB $\sqrt{\mu V}$	C	D dB	VR mV	Max Unc <sup>E</sup> (k=2)
0	CW	X	0.00	0.00	1.00	0.00	162.8	$\pm 3.3 \%$
		Y	0.00	0.00	1.00		162.4	
		Z	0.00	0.00	1.00		176.7	
10010- CAA	SAR Validation (Square, 100ms, 10ms)	X	2.91	69.50	11.48	10.00	20.0	$\pm 9.6 \%$
		Y	1.35	61.41	6.87		20.0	
		Z	1.64	63.37	8.27		20.0	
10011- CAB	UMTS-FDD (WCDMA)	X	1.84	78.98	21.46	0.00	150.0	$\pm 9.6 \%$
		Y	0.82	65.25	13.30		150.0	
		Z	1.06	68.85	16.02		150.0	
10012- CAB	IEEE 802.11b WiFi 2.4 GHz (DSSS, 1 Mbps)	X	1.24	66.18	17.53	0.41	150.0	$\pm 9.6 \%$
		Y	1.01	62.53	14.24		150.0	
		Z	1.12	63.97	15.48		150.0	
10013- CAB	IEEE 802.11g WiFi 2.4 GHz (DSSS-OFDM, 6 Mbps)	X	4.93	67.08	17.64	1.46	150.0	$\pm 9.6 \%$
		Y	4.56	66.44	16.91		150.0	
		Z	4.76	66.70	17.11		150.0	
10021- DAC	GSM-FDD (TDMA, GMSK)	X	100.00	116.80	28.03	9.39	50.0	$\pm 9.6 \%$
		Y	100.00	104.25	21.97		50.0	
		Z	100.00	108.46	24.06		50.0	
10023- DAC	GPRS-FDD (TDMA, GMSK, TN 0)	X	100.00	115.86	27.65	9.57	50.0	$\pm 9.6 \%$
		Y	27.86	91.24	18.81		50.0	
		Z	100.00	107.87	23.85		50.0	
10024- DAC	GPRS-FDD (TDMA, GMSK, TN 0-1)	X	100.00	124.40	30.29	6.56	60.0	$\pm 9.6 \%$
		Y	100.00	102.44	19.86		60.0	
		Z	100.00	110.17	23.70		60.0	
10025- DAC	EDGE-FDD (TDMA, 8PSK, TN 0)	X	7.05	92.09	38.98	12.57	50.0	$\pm 9.6 \%$
		Y	3.18	64.30	23.15		50.0	
		Z	5.20	80.44	32.44		50.0	
10026- DAC	EDGE-FDD (TDMA, 8PSK, TN 0-1)	X	10.75	101.29	37.96	9.56	60.0	$\pm 9.6 \%$
		Y	4.58	78.65	28.18		60.0	
		Z	7.14	89.57	32.76		60.0	
10027- DAC	GPRS-FDD (TDMA, GMSK, TN 0-1-2)	X	100.00	136.39	34.55	4.80	80.0	$\pm 9.6 \%$
		Y	100.00	100.53	18.19		80.0	
		Z	100.00	113.90	24.50		80.0	
10028- DAC	GPRS-FDD (TDMA, GMSK, TN 0-1-2-3)	X	100.00	154.91	41.33	3.55	100.0	$\pm 9.6 \%$
		Y	100.00	96.11	15.71		100.0	
		Z	100.00	119.88	26.26		100.0	
10029- DAC	EDGE-FDD (TDMA, 8PSK, TN 0-1-2)	X	5.71	84.43	30.09	7.80	80.0	$\pm 9.6 \%$
		Y	3.25	71.14	23.56		80.0	
		Z	4.39	77.68	26.53		80.0	
10030- CAA	IEEE 802.15.1 Bluetooth (GFSK, DH1)	X	100.00	126.72	30.80	5.30	70.0	$\pm 9.6 \%$
		Y	100.00	98.47	17.62		70.0	
		Z	100.00	109.19	22.80		70.0	
10031- CAA	IEEE 802.15.1 Bluetooth (GFSK, DH3)	X	100.00	204.79	58.62	1.88	100.0	$\pm 9.6 \%$
		Y	20.70	333.07	21.03		100.0	
		Z	100.00	114.13	22.48		100.0	

10032-CAA	IEEE 802.15.1 Bluetooth (GFSK, DH5)	X	100.00	332.68	104.48	1.17	100.0	± 9.6 %
		Y	0.02	110.01	6.35		100.0	
		Z	100.00	131.38	27.95		100.0	
10033-CAA	IEEE 802.15.1 Bluetooth (PI/4-DQPSK, DH1)	X	100.00	140.44	39.63	5.30	70.0	± 9.6 %
		Y	4.74	82.59	20.12		70.0	
		Z	38.53	116.47	31.52		70.0	
10034-CAA	IEEE 802.15.1 Bluetooth (PI/4-DQPSK, DH3)	X	100.00	137.36	36.72	1.88	100.0	± 9.6 %
		Y	1.09	65.96	11.42		100.0	
		Z	3.95	83.00	20.15		100.0	
10035-CAA	IEEE 802.15.1 Bluetooth (PI/4-DQPSK, DH5)	X	93.71	135.49	35.72	1.17	100.0	± 9.6 %
		Y	0.84	63.91	10.00		100.0	
		Z	2.28	76.28	17.42		100.0	
10036-CAA	IEEE 802.15.1 Bluetooth (8-DPSK, DH1)	X	100.00	141.11	39.94	5.30	70.0	± 9.6 %
		Y	6.85	88.04	21.99		70.0	
		Z	100.00	131.91	35.24		70.0	
10037-CAA	IEEE 802.15.1 Bluetooth (8-DPSK, DH3)	X	100.00	137.50	36.72	1.88	100.0	± 9.6 %
		Y	1.01	65.33	11.12		100.0	
		Z	3.38	81.04	19.46		100.0	
10038-CAA	IEEE 802.15.1 Bluetooth (8-DPSK, DH5)	X	100.00	137.56	36.40	1.17	100.0	± 9.6 %
		Y	0.84	64.10	10.23		100.0	
		Z	2.31	76.79	17.76		100.0	
10039-CAB	CDMA2000 (1xRTT, RC1)	X	19.34	107.07	27.68	0.00	150.0	± 9.6 %
		Y	0.72	62.44	8.55		150.0	
		Z	2.02	74.02	15.92		150.0	
10042-CAB	IS-54 / IS-136 FDD (TDMA/FDM, PI/4-DQPSK, Halfrate)	X	100.00	114.63	26.27	7.78	50.0	± 9.6 %
		Y	2.19	68.12	10.36		50.0	
		Z	100.00	105.23	21.86		50.0	
10044-CAA	IS-91/EIA/TIA-553 FDD (FDMA, FM)	X	0.00	122.73	2.62	0.00	150.0	± 9.6 %
		Y	0.11	121.80	11.55		150.0	
		Z	0.01	113.49	7.34		150.0	
10048-CAA	DECT (TDD, TDMA/FDM, GFSK, Full Slot, 24)	X	100.00	110.31	26.61	13.80	25.0	± 9.6 %
		Y	5.04	69.37	13.19		25.0	
		Z	26.95	89.52	20.10		25.0	
10049-CAA	DECT (TDD, TDMA/FDM, GFSK, Double Slot, 12)	X	1017.78	139.92	31.99	10.79	40.0	± 9.6 %
		Y	4.91	72.32	13.17		40.0	
		Z	100.00	106.11	23.44		40.0	
10056-CAA	UMTS-TDD (TD-SCDMA, 1.28 Mcps)	X	100.00	130.04	36.07	9.03	50.0	± 9.6 %
		Y	26.70	99.76	25.13		50.0	
		Z	100.00	123.07	32.44		50.0	
10058-DAC	EDGE-FDD (TDMA, 8PSK, TN 0-1-2-3)	X	4.32	78.02	26.46	6.55	100.0	± 9.6 %
		Y	2.76	68.34	21.38		100.0	
		Z	3.52	73.12	23.61		100.0	
10059-CAB	IEEE 802.11b WiFi 2.4 GHz (DSSS, 2 Mbps)	X	1.30	67.86	18.55	0.61	110.0	± 9.6 %
		Y	1.00	63.07	14.61		110.0	
		Z	1.14	64.89	16.05		110.0	
10060-CAB	IEEE 802.11b WiFi 2.4 GHz (DSSS, 5.5 Mbps)	X	100.00	160.04	44.97	1.30	110.0	± 9.6 %
		Y	1.79	82.46	21.13		110.0	
		Z	100.00	146.44	38.81		110.0	

10061-CAB	IEEE 802.11b WiFi 2.4 GHz (DSSS, 11 Mbps)	X	9.96	110.55	34.50	2.04	110.0	± 9.6 %
		Y	1.33	71.06	18.70		110.0	
		Z	2.29	79.83	22.80		110.0	
10062-CAC	IEEE 802.11a/h WiFi 5 GHz (OFDM, 6 Mbps)	X	4.75	67.15	17.08	0.49	100.0	± 9.6 %
		Y	4.36	66.39	16.30		100.0	
		Z	4.58	66.75	16.56		100.0	
10063-CAC	IEEE 802.11a/h WiFi 5 GHz (OFDM, 9 Mbps)	X	4.77	67.26	17.20	0.72	100.0	± 9.6 %
		Y	4.37	66.48	16.40		100.0	
		Z	4.59	66.82	16.65		100.0	
10064-CAC	IEEE 802.11a/h WiFi 5 GHz (OFDM, 12 Mbps)	X	5.06	67.50	17.41	0.86	100.0	± 9.6 %
		Y	4.61	66.69	16.61		100.0	
		Z	4.85	67.06	16.87		100.0	
10065-CAC	IEEE 802.11a/h WiFi 5 GHz (OFDM, 18 Mbps)	X	4.92	67.40	17.53	1.21	100.0	± 9.6 %
		Y	4.47	66.51	16.68		100.0	
		Z	4.71	66.92	16.95		100.0	
10066-CAC	IEEE 802.11a/h WiFi 5 GHz (OFDM, 24 Mbps)	X	4.93	67.41	17.70	1.46	100.0	± 9.6 %
		Y	4.48	66.48	16.82		100.0	
		Z	4.72	66.91	17.11		100.0	
10067-CAC	IEEE 802.11a/h WiFi 5 GHz (OFDM, 36 Mbps)	X	5.21	67.49	18.11	2.04	100.0	± 9.6 %
		Y	4.76	66.79	17.33		100.0	
		Z	5.00	67.10	17.56		100.0	
10068-CAC	IEEE 802.11a/h WiFi 5 GHz (OFDM, 48 Mbps)	X	5.25	67.55	18.35	2.55	100.0	± 9.6 %
		Y	4.78	66.67	17.49		100.0	
		Z	5.03	67.03	17.73		100.0	
10069-CAC	IEEE 802.11a/h WiFi 5 GHz (OFDM, 54 Mbps)	X	5.32	67.51	18.52	2.67	100.0	± 9.6 %
		Y	4.84	66.70	17.68		100.0	
		Z	5.10	67.06	17.93		100.0	
10071-CAB	IEEE 802.11g WiFi 2.4 GHz (DSSS/OFDM, 9 Mbps)	X	5.01	67.13	17.94	1.99	100.0	± 9.6 %
		Y	4.64	66.49	17.21		100.0	
		Z	4.84	66.75	17.40		100.0	
10072-CAB	IEEE 802.11g WiFi 2.4 GHz (DSSS/OFDM, 12 Mbps)	X	4.99	67.49	18.20	2.30	100.0	± 9.6 %
		Y	4.58	66.67	17.37		100.0	
		Z	4.79	67.01	17.59		100.0	
10073-CAB	IEEE 802.11g WiFi 2.4 GHz (DSSS/OFDM, 18 Mbps)	X	5.03	67.61	18.52	2.83	100.0	± 9.6 %
		Y	4.63	66.82	17.70		100.0	
		Z	4.84	67.13	17.90		100.0	
10074-CAB	IEEE 802.11g WiFi 2.4 GHz (DSSS/OFDM, 24 Mbps)	X	4.99	67.43	18.65	3.30	100.0	± 9.6 %
		Y	4.63	66.75	17.85		100.0	
		Z	4.81	66.99	18.03		100.0	
10075-CAB	IEEE 802.11g WiFi 2.4 GHz (DSSS/OFDM, 36 Mbps)	X	5.02	67.53	18.98	3.82	90.0	± 9.6 %
		Y	4.63	66.70	18.08		90.0	
		Z	4.83	67.01	18.30		90.0	
10076-CAB	IEEE 802.11g WiFi 2.4 GHz (DSSS/OFDM, 48 Mbps)	X	5.00	67.21	19.04	4.15	90.0	± 9.6 %
		Y	4.67	66.57	18.25		90.0	
		Z	4.84	66.80	18.43		90.0	
10077-CAB	IEEE 802.11g WiFi 2.4 GHz (DSSS/OFDM, 54 Mbps)	X	5.02	67.26	19.13	4.30	90.0	± 9.6 %
		Y	4.70	66.65	18.36		90.0	
		Z	4.86	66.86	18.52		90.0	

10081-CAB	CDMA2000 (1xRTT, RC3)	X	3.86	88.87	22.28	0.00	150.0	± 9.6 %
		Y	0.39	60.00	6.46		150.0	
		Z	0.81	66.53	12.23		150.0	
10082-CAB	IS-54 / IS-136 FDD (TDMA/FDM, PI/4-DQPSK, Fullrate)	X	2.69	65.59	5.86	4.77	80.0	± 9.6 %
		Y	10.04	60.19	1.48		80.0	
		Z	0.56	60.00	3.36		80.0	
10090-DAC	GPRS-FDD (TDMA, GMSK, TN 0-4)	X	100.00	124.42	30.32	6.56	60.0	± 9.6 %
		Y	100.00	102.56	19.93		60.0	
		Z	100.00	110.21	23.74		60.0	
10097-CAB	UMTS-FDD (HSDPA)	X	2.27	72.27	18.51	0.00	150.0	± 9.6 %
		Y	1.59	66.74	14.34		150.0	
		Z	1.87	68.75	16.12		150.0	
10098-CAB	UMTS-FDD (HSUPA, Subtest 2)	X	2.23	72.34	18.54	0.00	150.0	± 9.6 %
		Y	1.56	66.67	14.30		150.0	
		Z	1.83	68.72	16.10		150.0	
10099-DAC	EDGE-FDD (TDMA, 8PSK, TN 0-4)	X	10.89	101.61	38.07	9.56	60.0	± 9.6 %
		Y	4.60	78.77	28.23		60.0	
		Z	7.21	89.78	32.83		60.0	
10100-CAE	LTE-FDD (SC-FDMA, 100% RB, 20 MHz, QPSK)	X	3.77	74.04	18.80	0.00	150.0	± 9.6 %
		Y	2.72	68.71	15.92		150.0	
		Z	3.14	70.85	17.03		150.0	
10101-CAE	LTE-FDD (SC-FDMA, 100% RB, 20 MHz, 16-QAM)	X	3.46	69.06	17.08	0.00	150.0	± 9.6 %
		Y	2.95	66.60	15.43		150.0	
		Z	3.19	67.71	16.09		150.0	
10102-CAE	LTE-FDD (SC-FDMA, 100% RB, 20 MHz, 64-QAM)	X	3.55	68.89	17.10	0.00	150.0	± 9.6 %
		Y	3.05	66.66	15.56		150.0	
		Z	3.30	67.68	16.17		150.0	
10103-CAG	LTE-TDD (SC-FDMA, 100% RB, 20 MHz, QPSK)	X	6.76	78.84	22.54	3.98	65.0	± 9.6 %
		Y	4.52	72.48	19.54		65.0	
		Z	5.54	75.19	20.58		65.0	
10104-CAG	LTE-TDD (SC-FDMA, 100% RB, 20 MHz, 16-QAM)	X	6.13	74.76	21.60	3.98	65.0	± 9.6 %
		Y	4.52	69.83	18.98		65.0	
		Z	5.39	72.35	20.09		65.0	
10105-CAG	LTE-TDD (SC-FDMA, 100% RB, 20 MHz, 64-QAM)	X	5.63	72.80	21.01	3.98	65.0	± 9.6 %
		Y	4.49	69.37	19.06		65.0	
		Z	5.15	71.22	19.87		65.0	
10108-CAG	LTE-FDD (SC-FDMA, 100% RB, 10 MHz, QPSK)	X	3.28	73.32	18.73	0.00	150.0	± 9.6 %
		Y	2.33	68.12	15.72		150.0	
		Z	2.72	70.14	16.88		150.0	
10109-CAG	LTE-FDD (SC-FDMA, 100% RB, 10 MHz, 16-QAM)	X	3.13	69.19	17.16	0.00	150.0	± 9.6 %
		Y	2.57	66.50	15.16		150.0	
		Z	2.85	67.67	16.00		150.0	
10110-CAG	LTE-FDD (SC-FDMA, 100% RB, 5 MHz, QPSK)	X	2.73	72.94	18.68	0.00	150.0	± 9.6 %
		Y	1.82	67.19	14.96		150.0	
		Z	2.20	69.39	16.50		150.0	
10111-CAG	LTE-FDD (SC-FDMA, 100% RB, 5 MHz, 16-QAM)	X	2.96	70.94	17.93	0.00	150.0	± 9.6 %
		Y	2.25	67.31	15.02		150.0	
		Z	2.60	68.87	16.38		150.0	

10112-CAG	LTE-FDD (SC-FDMA, 100% RB, 10 MHz, 64-QAM)	X	3.24	69.02	17.13	0.00	150.0	± 9.6 %
		Y	2.70	66.62	15.28		150.0	
		Z	2.97	67.67	16.06		150.0	
10113-CAG	LTE-FDD (SC-FDMA, 100% RB, 5 MHz, 64-QAM)	X	3.10	70.86	17.94	0.00	150.0	± 9.6 %
		Y	2.39	67.55	15.21		150.0	
		Z	2.75	69.01	16.50		150.0	
10114-CAC	IEEE 802.11n (HT Greenfield, 13.5 Mbps, BPSK)	X	5.21	67.66	16.94	0.00	150.0	± 9.6 %
		Y	4.87	66.86	16.35		150.0	
		Z	5.05	67.26	16.51		150.0	
10115-CAC	IEEE 802.11n (HT Greenfield, 81 Mbps, 16-QAM)	X	5.51	67.77	16.99	0.00	150.0	± 9.6 %
		Y	5.12	66.96	16.40		150.0	
		Z	5.30	67.30	16.54		150.0	
10116-CAC	IEEE 802.11n (HT Greenfield, 135 Mbps, 64-QAM)	X	5.32	67.88	16.97	0.00	150.0	± 9.6 %
		Y	4.94	67.01	16.35		150.0	
		Z	5.14	67.44	16.53		150.0	
10117-CAC	IEEE 802.11n (HT Mixed, 13.5 Mbps, BPSK)	X	5.17	67.51	16.88	0.00	150.0	± 9.6 %
		Y	4.84	66.74	16.30		150.0	
		Z	5.02	67.13	16.47		150.0	
10118-CAC	IEEE 802.11n (HT Mixed, 81 Mbps, 16-QAM)	X	5.60	68.01	17.11	0.00	150.0	± 9.6 %
		Y	5.21	67.22	16.54		150.0	
		Z	5.38	67.50	16.65		150.0	
10119-CAC	IEEE 802.11n (HT Mixed, 135 Mbps, 64-QAM)	X	5.29	67.82	16.95	0.00	150.0	± 9.6 %
		Y	4.95	67.06	16.38		150.0	
		Z	5.12	67.40	16.52		150.0	
10140-CAE	LTE-FDD (SC-FDMA, 100% RB, 15 MHz, 16-QAM)	X	3.59	68.89	17.01	0.00	150.0	± 9.6 %
		Y	3.07	66.68	15.46		150.0	
		Z	3.33	67.69	16.09		150.0	
10141-CAE	LTE-FDD (SC-FDMA, 100% RB, 15 MHz, 64-QAM)	X	3.70	68.89	17.13	0.00	150.0	± 9.6 %
		Y	3.20	66.88	15.69		150.0	
		Z	3.45	67.80	16.26		150.0	
10142-CAE	LTE-FDD (SC-FDMA, 100% RB, 3 MHz, QPSK)	X	2.64	74.18	18.92	0.00	150.0	± 9.6 %
		Y	1.52	66.51	13.74		150.0	
		Z	1.99	69.58	16.12		150.0	
10143-CAE	LTE-FDD (SC-FDMA, 100% RB, 3 MHz, 16-QAM)	X	3.08	73.19	18.30	0.00	150.0	± 9.6 %
		Y	1.91	66.61	13.39		150.0	
		Z	2.49	69.82	16.01		150.0	
10144-CAE	LTE-FDD (SC-FDMA, 100% RB, 3 MHz, 64-QAM)	X	2.61	69.56	16.12	0.00	150.0	± 9.6 %
		Y	1.68	64.21	11.60		150.0	
		Z	2.16	66.87	14.05		150.0	
10145-CAF	LTE-FDD (SC-FDMA, 100% RB, 1.4 MHz, QPSK)	X	2.17	73.67	16.29	0.00	150.0	± 9.6 %
		Y	0.62	60.00	6.23		150.0	
		Z	1.04	64.05	10.54		150.0	
10146-CAF	LTE-FDD (SC-FDMA, 100% RB, 1.4 MHz, 16-QAM)	X	7.15	82.63	18.53	0.00	150.0	± 9.6 %
		Y	0.82	60.00	6.21		150.0	
		Z	1.41	63.26	9.17		150.0	
10147-CAF	LTE-FDD (SC-FDMA, 100% RB, 1.4 MHz, 64-QAM)	X	35.33	102.70	24.44	0.00	150.0	± 9.6 %
		Y	0.84	60.10	6.34		150.0	
		Z	1.56	64.29	9.81		150.0	