

# SM-ATK02N Asset Tracker

## User Guide



# SM-ATK02N Asset Tracker

---

## Contents

SM-ATK02N Asset Tracker	3
Device Specifications	3
Device Lifespan	3
Electrical	3
Mechanical	3
Device notification payload	3
Purchasing the SM-ATK02N Asset Tracker	4
Powering on the device and Installation	5
Optional mounting bracket	6
Device operation and LED behavior	8
How to contact us	9
Frequently Asked Questions (FAQ)	10

## SM-ATK02N Asset Tracker

The SM-ATK02N Asset Tracker interfaces with Link Labs Asset Management Operations Center server to provide customers with a highly accurate GPS, Wi-Fi, Bluetooth positioning service, and accelerometer and temperature. The device comes with a signed Link Labs certificate for an out-of-the-box experience that requires no device configuration.

The SM-ATK02N asset tracker is an IP67 rated device with a 5-color LED indicator.

---

### Device Specifications

#### Device Lifespan

- Up to 1,080 notifications or 2 years from date of manufacturing, whichever comes first

#### Electrical

- Lithium thionyl chloride 2.2Ah Battery

#### Mechanical

- Case Material: ABS
- Dimensions: 75 x 72 x 23mm
- Weight: 110g
- Operating Temperature: -20°C to +50°C

#### Device notification payload contains

- GPS for outdoor positioning
- WiFi for outdoor positioning
  - Only when GPS positioning data is not available
- Cell Tower ID for outdoor positioning
- Bluetooth for indoor positioning
- Movement and Impact reports



## Powering on the device and installation

The device has the power button located on the back side of the device and a LED light indication located on the front of the device.

*Please note the location of the Power Button and LED Lights*



To power on the device, press and hold the power button for 3 seconds. The LED light will blink white 3 times during this power on cycle.

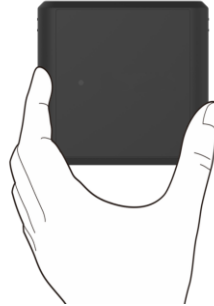
- The device notification cycles will start upon device power on.
- After the power on cycle, the LED will blink blue slowly while it checks for LTE-M network coverage.
  - Upon successful network connection the blue LED light will turn solid blue for 2 seconds
  - If network coverage is not available, the blue LED light will fast blink for 2 seconds.

To power cycle the device, press and hold the power button for 10 seconds. The LED light will show solid red, then restart the power on cycle.

# SM-ATK02N Asset Tracker

---

The SM-ATK02N Asset Tracker comes with double sided VHB tape to affix the device to flat surfaces. Please ensure you power up the device before you affix the device.



## Optional mounting bracket

An optional mounting bracket for the SM-ATK02N Asset Tracker is available for purchase.



Customers may use screws, zip ties or VHB tape to affix the mounting bracket to a variety of surfaces.

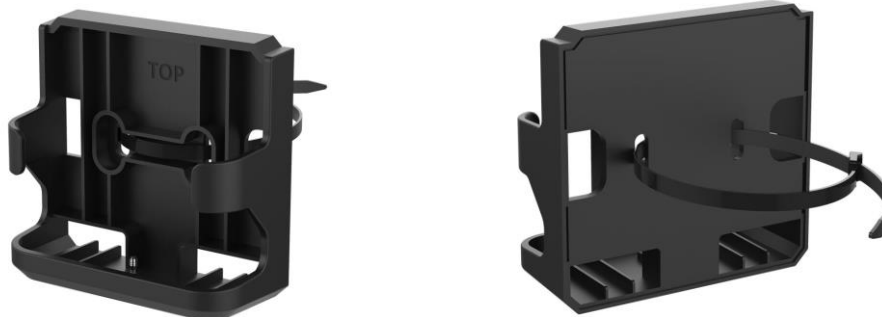
Using Screws to affix bracket



# SM-ATK02N Asset Tracker

---

Using zip ties to affix bracket



Using VHB tape to affix bracket



After affixing the mounting bracket, insert the asset tracker into the mounting bracket and secure it by tightening the screw located on the bottom.



# SM-ATK02N Asset Tracker

## Device operation and LED behavior

The SM-ATK02N asset tracker has a lifespan of 1080 notifications or 2 years from date of manufacturing, whichever comes first.



Button operations include the following:

To	User Action	LED Behavior
Power-ON device	User presses and holds power button for 3 seconds	White LED blinks 3 times quickly
Device Status check	User single clicks power button	When device is in Power-On state and asleep, device fast blink WHITE 2 times
		When device is in Power-Off state, device fast blink RED 2 times
Device Power Cycle	User presses and holds power button for 10 secs	Solid RED then 3 fast WHITE blinks (when device enters Power On state)

The LED light have the following behavior during the device operation.

Device Status	Device status indicators	LED Behavior
Network coverage feedback	After Power-ON cycle, device performs coverage check	BLUE - Slow blink, while checking
	- In coverage	BLUE - Solid 2 seconds
	- Out of coverage	BLUE - Fast blink for 2 seconds
Device wakes up to transmit payload	Attempting	GREEN - Slow Blink
	Successful	GREEN - Solid 2 seconds
	Unsuccessful	GREEN- Fast Blink for 2 seconds
FOTA/SOTA/Config changes	Updating	YELLOW - Slow blink while updating
	Update Successful	YELLOW - Solid 2 seconds

## Frequency Asked Questions (FAQ)

Question	Answer
How do I power on the device?	Device is powered on by pressing/holding the button for 3 seconds. The LED will blink white 3 times to indicate it is powered up.
How do I diagnose what is going on with my device?	Most of the device diagnostics can be observed from the LED light on the device.
Can I power down the device?	Devices purchased through the IoT Marketplace do not have the ability to be powered off after the initial power on.
Can I change the configuration of the device?	<p>Devices purchased through the IoT Marketplace are loaded with default settings that are pre-configured.</p> <p>Enterprise customers seeking to deploy different configurations of the device require additional purchase. Customers are encouraged to contact Link Labs IoT Business Development Team</p>



# SM-ATK02N Asset Tracker

---

## **Federal Communication Commission Interference Statement**

This device complies with Part 15 of the FCC Rules. Operation is subject to the following two conditions: (1) This device may not cause harmful interference, and (2) this device must accept any interference received, including interference that may cause undesired operation.

This equipment has been tested and found to comply with the limits for a Class B digital device, pursuant to Part 15 of the FCC Rules. These limits are designed to provide reasonable protection against harmful interference in a residential installation. This equipment generates, uses and can radiate radio frequency energy and, if not installed and used in accordance with the instructions, may cause harmful interference to radio communications. However, there is no guarantee that interference will not occur in a particular installation. If this equipment does cause harmful interference to radio or television reception, which can be determined by turning the equipment off and on, the user is encouraged to try to correct the interference by one of the following measures:

- Reorient or relocate the receiving antenna.
- Increase the separation between the equipment and receiver.
- Connect the equipment into an outlet on a circuit different from that to which the receiver is connected.
- Consult the dealer or an experienced radio/TV technician for help.

FCC Caution: Any changes or modifications not expressly approved by the party responsible for compliance could void the user's authority to operate this equipment.

This transmitter must not be co-located or operating in conjunction with any other antenna or transmitter.

## **Radiation Exposure Statement:**

This equipment complies with FCC radiation exposure limits set forth for an uncontrolled environment. This equipment should be installed and operated with minimum distance 20cm between the radiator & your body.

## **Industry Canada statement**

This device complies with ISED's licence-exempt RSSs. Operation is subject to the following two conditions: (1) This device may not cause harmful interference, and (2) this device must accept any interference received, including interference that may cause undesired operation.

Le présent appareil est conforme aux CNR d'ISED applicables aux appareils radio exempts de licence. L'exploitation est autorisée aux deux conditions suivantes : (1) le dispositif ne doit pas produire de brouillage préjudiciable, et (2) ce dispositif doit accepter tout brouillage reçu, y compris un brouillage susceptible de provoquer un fonctionnement indésirable.

## **Radiation Exposure Statement:**

This equipment complies with ISED radiation exposure limits set forth for an uncontrolled environment. This equipment should be installed and operated with greater than 20cm between the radiator & your body.

## **Déclaration d'exposition aux radiations:**

Cet équipement est conforme aux limites d'exposition aux rayonnements ISED établies pour un environnement non contrôlé. Cet équipement doit être installé et utilisé à plus de 20cm entre le radiateur et votre corps.