

# TEST REPORT

Report No.: BCTC2412356516-1E

---

Applicant: REOLINK INNOVATION LIMITED

---

Product Name: WiFi module

---

Test Model: SKI.WB800D80U.2\_D40L

---

Tested Date: 2024-12-09 to 2024-12-30

---

Issued Date: 2024-12-30

---

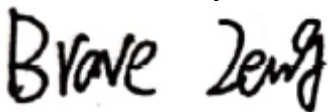
**Shenzhen BCTC Testing Co., Ltd.**



**FCC ID: 2AYHE-2404B**

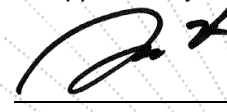
Product Name: WiFi module  
Trademark: **Reolink**  
Model/Type reference: SKI.WB800D80U.2\_D40L  
Prepared For: REOLINK INNOVATION LIMITED  
Address: FLAT/RM 705 7/F FA YUEN COMMERCIAL BUILDING 75-77 FA YUEN STREET  
MONG KOK KL HONG KONG  
Manufacturer: REOLINK INNOVATION LIMITED  
Address: FLAT/RM 705 7/F FA YUEN COMMERCIAL BUILDING 75-77 FA YUEN STREET  
MONG KOK KL HONG KONG  
Prepared By: Shenzhen BCTC Testing Co., Ltd.  
Address: 1-2/F., Building B, Pengzhou Industrial Park, No.158, Fuyuan 1st Road, Zhancheng,  
Fuhai Subdistrict, Bao'an District, Shenzhen, Guangdong, China  
Sample Received Date: 2024-12-09  
Sample tested Date: 2024-12-09 to 2024-12-30  
Issue Date: 2024-12-30  
Report No.: BCTC2412356516-1E  
Test Standards: FCC Part15.247  
ANSI C63.10-2013  
Test Results: PASS  
Remark: This is Bluetooth BLE radio test report.

Tested by:



Brave Zeng/ Project Handler

Approved by:



Zero Zhou/Reviewer

The test report is effective only with both signature and specialized stamp. This result(s) shown in this report refer only to the sample(s) tested. Without written approval of Shenzhen BCTC Testing Co., Ltd, this report can't be reproduced except in full. The tested sample(s) and the sample information are provided by the client.

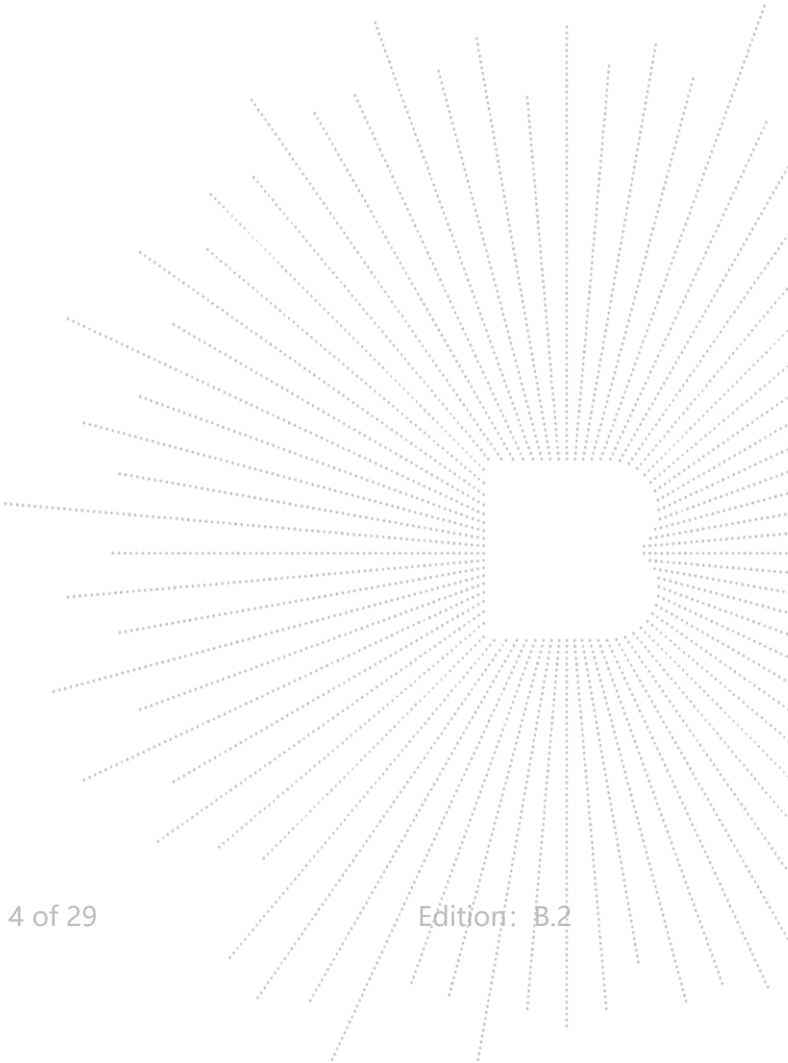
## Table Of Content

Test Report Declaration	Page
1. Version .....	4
2. Test Summary .....	5
3. Measurement Uncertainty .....	6
4. Product Information And Test Setup .....	7
4.1 Product Information .....	7
4.2 Test Setup Configuration .....	7
4.3 Support Equipment .....	8
4.4 Channel List .....	8
4.5 Test Mode .....	8
4.6 Table Of Parameters Of Text Software Setting .....	9
5. Test Facility And Test Instrument Used .....	10
5.1 Test Facility .....	10
5.2 Test Instrument Used .....	10
6. Conducted Emissions .....	11
6.1 Block Diagram Of Test Setup .....	11
6.2 Limit .....	11
6.3 Test Procedure .....	11
6.4 EUT Operating Conditions .....	11
6.5 Test Result .....	12
7. Radiated Emissions .....	14
7.1 Block Diagram Of Test Setup .....	14
7.2 Limit .....	15
7.3 Test Procedure .....	16
7.4 EUT Operating Conditions .....	17
7.5 Test Result .....	17
8. Radiated Band Emission Measurement And Restricted Bands Of Operation .....	22
8.1 Block Diagram Of Test Setup .....	22
8.2 Limit .....	22
8.3 Test Procedure .....	23
8.4 EUT operating Conditions .....	23
8.5 Test Result .....	24
9. Antenna Requirement .....	25
9.1 Limit .....	25
9.2 Test Result .....	25
10. EUT Photographs .....	26
11. EUT Test Setup Photographs .....	27

(Note: N/A Means Not Applicable)

1. Version

Report No.	Issue Date	Description	Approved
BCTC2412356516-1E	2024-12-30	Original	Valid

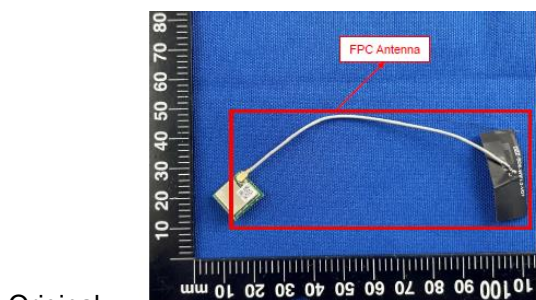


## 2. Test Summary

The Product has been tested according to the following specifications:

No.	Test Parameter	Clause No.	Results
1	Conducted Emission	15.207	PASS
2	Radiated Spurious Emission	15.247 (d), 15.205	PASS
3	Restricted Band of Operation	15.205	PASS
4	Band Edge (Out of Band Emissions)	15.247(d)	PASS
5	Antenna Requirement	15.203	PASS

Note: According to the following changes in the product, change the antenna, Therefore, conducted emission and radiation emission, radiation stray and radiation sideband tests were only carried out in this report on the original report (BL-SZ2450651-601)



Original:



New

Note: According to the following changes in the original test report BL-SZ2450651-601), no changes have been made to the product. Only updated test instruments, conducted emission, radiation emission, radiation sideband, radiation spurious, EUT photos, etc.

### 3. Measurement Uncertainty

Where relevant, the following measurement uncertainty levels have been estimated for tests performed on the Product as specified in CISPR 16-4-2. This uncertainty represents an expanded uncertainty expressed at approximately the 95% confidence level using a coverage factor of k=2.

No.	Item	Uncertainty
1	3m chamber Radiated spurious emission(9kHz-30MHz)	U=3.7dB
2	3m chamber Radiated spurious emission(30MHz-1GHz)	U=4.3dB
3	3m chamber Radiated spurious emission(1GHz-18GHz)	U=4.5dB
4	3m chamber Radiated spurious emission(18GHz-40GHz)	U=3.34dB
5	Conducted Emission(150kHz-30MHz)	U=3.20dB
6	Conducted Adjacent channel power	U=1.38dB
7	Conducted output power uncertainty Above 1G	U=1.576dB
8	Conducted output power uncertainty below 1G	U=1.28dB
9	humidity uncertainty	U=5.3%
10	Temperature uncertainty	U=0.59°C

## 4. Product Information And Test Setup

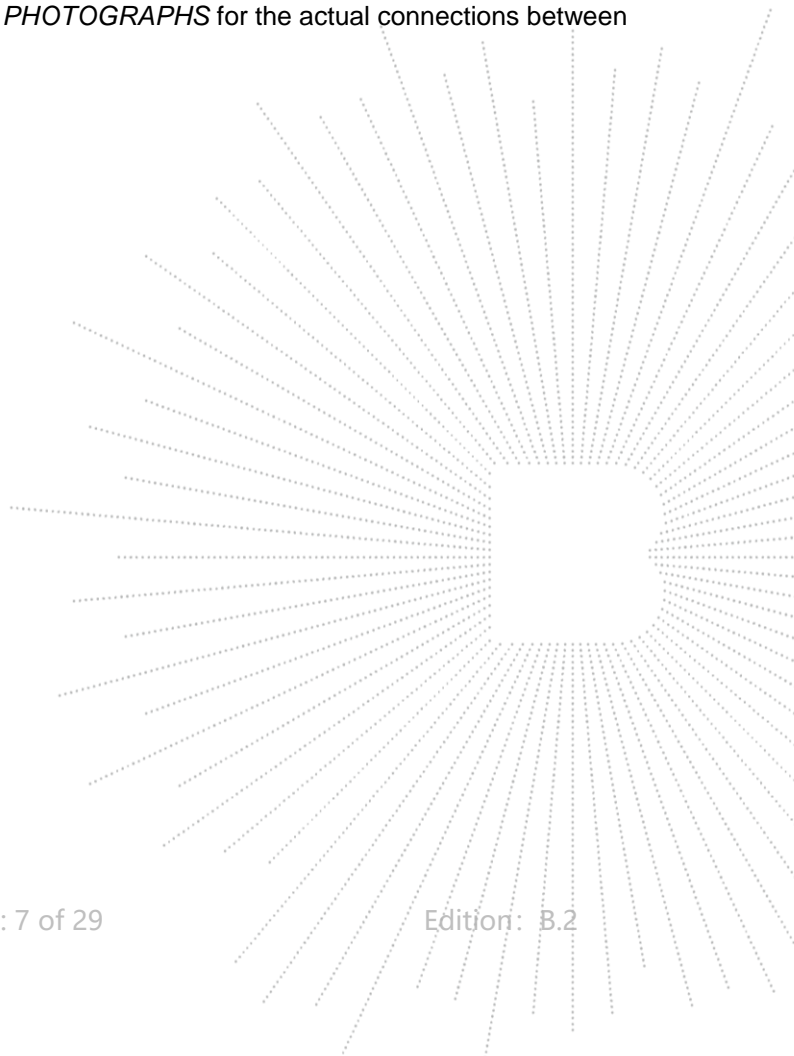
### 4.1 Product Information

Model/Type reference: SKI.WB800D80U.2\_D40L  
Model differences: N/A  
Bluetooth Version: 5.0  
Hardware Version: N/A  
Software Version: N/A  
Operation Frequency: 2402-2480MHz  
Type of Modulation: GFSK  
Data Rate: LE 1M PHY, LE 2M PHY  
Number Of Channel 40CH  
Antenna installation: FPC antenna

Antenna Gain: 2.6 dBi  
Remark:  
☒ The antenna gain of the product comes from the antenna report provided by the customer, and the test data is affected by the customer information.  
☐ The antenna gain of the product is provided by the customer, and the test data is affected by the customer information.  
Ratings: DC 3.3V

### 4.2 Test Setup Configuration

See test photographs attached in *EUT TEST SETUP PHOTOGRAPHS* for the actual connections between Product and support equipment.





### 4.3 Support Equipment

No.	Device Type	Brand	Model	Series No.	Note
E-1	WiFi module	<b>Reolink</b>	SKI.WB800D8 0U.2_D40L	N/A	EUT
E-2	PC	Lenovo	ThinkPad S2	---	---
E-3	Adapter	---	---	---	---

Item	Shielded Type	Ferrite Core	Length	Note
C-1	NO	NO	0M	DC cable unshielded

**Notes:**

1. All the equipment/cables were placed in the worst-case configuration to maximize the emission during the test.
2. Grounding was established in accordance with the manufacturer's requirements and conditions for the intended use.

### 4.4 Channel List

Channel List					
Channel	Frequency (MHz)	Channel	Frequency (MHz)	Channel	Frequency (MHz)
01	2402	11	2422	21	2442
02	2404	12	2424	22	2444
03	2406	13	2426	23	2446
~	~	~	~	~	~
09	2418	19	2438	39	2478
10	2420	20	2440	40	2480

### 4.5 Test Mode

To investigate the maximum EMI emission characteristics generates from EUT, the test system was pre-scanning tested base on the consideration of following EUT operation mode or test configuration mode which possible have effect on EMI emission level. Each of these EUT operation mode(s) or test configuration mode(s) mentioned above was evaluated respectively.

For All Mode	Description	Modulation Type
Mode 1	CH01	GFSK 1M
Mode 2	CH20	
Mode 3	CH40	
Mode 4	CH01	GFSK 2M
Mode 5	CH20	
Mode 6	CH40	
Mode 7	BT Link+WIFI Link(Conducted emission and Radiated emission)	

**Note:**

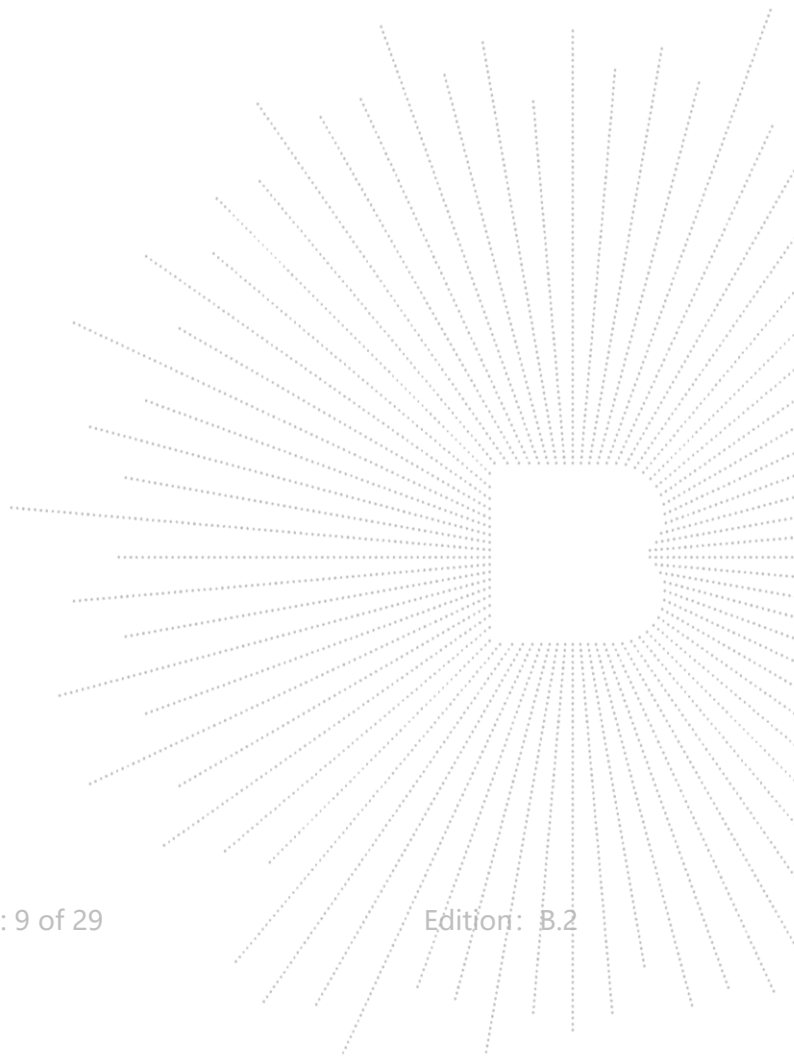
- (1) The measurements are performed at the highest, middle, lowest available channels.
- (2) Fully-charged battery is used during the test



#### 4.6 Table Of Parameters Of Text Software Setting

During testing channel & power controlling software provided by the customer was used to control the operating channel as well as the output power level. The RF output power selection is for the setting of RF output power expected by the customer and is going to be fixed on the firmware of the final end product power parameters

Test software Version	CMD		
	2402 MHz	2440 MHz	2480 MHz
Frequency			
Parameters	DEF	DEF	DEF



## 5. Test Facility And Test Instrument Used

### 5.1 Test Facility

All measurement facilities used to collect the measurement data are located at Shenzhen BCTC Testing Co., Ltd. Address: 1-2/F., Building B, Pengzhou Industrial Park, No.158, Fuyuan 1st Road, Zhancheng, Fuhai Subdistrict, Bao'an District, Shenzhen, Guangdong, China. The site and apparatus are constructed in conformance with the requirements of ANSI C63.4 and CISPR 16-1-1 other equivalent standards.

FCC Test Firm Registration Number: 712850

A2LA certificate registration number is: CN1212

ISED Registered No.: 23583

ISED CAB identifier: CN0017

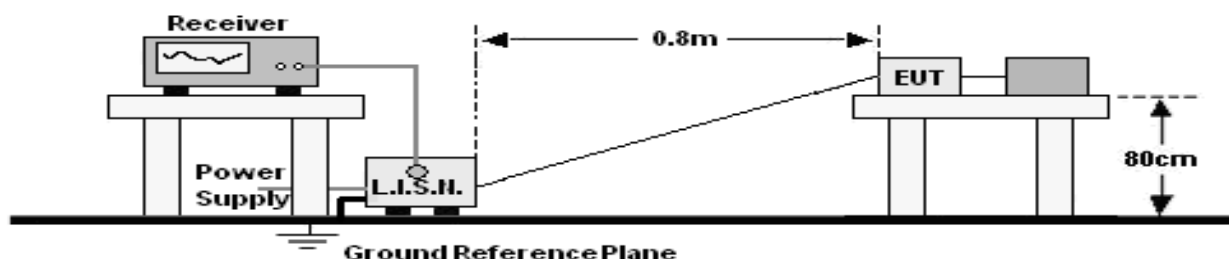
### 5.2 Test Instrument Used

Conducted Emissions Test					
Equipment	Manufacturer	Model#	Serial#	Last Cal.	Next Cal.
Receiver	R&S	ESR3	102075	May 16, 2024	May 15, 2025
LISN	R&S	ENV216	101375	May 16, 2024	May 15, 2025
Software	Frad	EZ-EMC	EMC-CON 3A1	\	\
Pulse limiter	Schwarzbeck	VTSD9561-F	01323	May 16, 2024	May 15, 2025

Radiated Emissions Test (966 Chamber01)					
Equipment	Manufacturer	Model#	Serial#	Last Cal.	Next Cal.
966 chamber	ChengYu	966 Room	966	May 16, 2024	May 15, 2025
Receiver	R&S	ESR3	102075	May 16, 2024	May 15, 2025
Receiver	R&S	ESRP	101154	May 16, 2024	May 15, 2025
Amplifier	Schwarzbeck	BBV9744	9744-0037	May 16, 2024	May 15, 2025
TRILOG Broadband Antenna	Schwarzbeck	VULB9163	942	May 21, 2024	May 20, 2025
Loop Antenna(9KHz -30MHz)	Schwarzbeck	FMZB1519B	00014	May 21, 2024	May 20, 2025
Amplifier	SKET	LAPA_01G18 G-45dB	SK2021040901	May 16, 2024	May 15, 2025
Horn Antenna	Schwarzbeck	BBHA9120D	1541	May 21, 2024	May 20, 2025
Amplifier(18G Hz-40GHz)	MITEQ	TTA1840-35-HG	2034381	May 16, 2024	May 15, 2025
Horn Antenna(18G Hz-40GHz)	Schwarzbeck	BBHA9170	00822	May 21, 2024	May 20, 2025
Spectrum Analyzer9kHz-40GHz	R&S	FSP40	100363	May 16, 2024	May 15, 2025
Software	Frad	EZ-EMC	FA-03A2 RE	\	\

## 6. Conducted Emissions

### 6.1 Block Diagram Of Test Setup



### 6.2 Limit

FREQUENCY (MHz)	Limit (dBuV)	
	Quas-peak	Average
0.15 -0.5	66 - 56 *	56 - 46 *
0.50 -5.0	56.00	46.00
5.0 -30.0	60.00	50.00

Notes:

- \*Decreasing linearly with logarithm of frequency.
- The lower limit shall apply at the transition frequencies.

### 6.3 Test Procedure

Receiver Parameters	Setting
Attenuation	10 dB
Start Frequency	0.15 MHz
Stop Frequency	30 MHz
IF Bandwidth	9 kHz

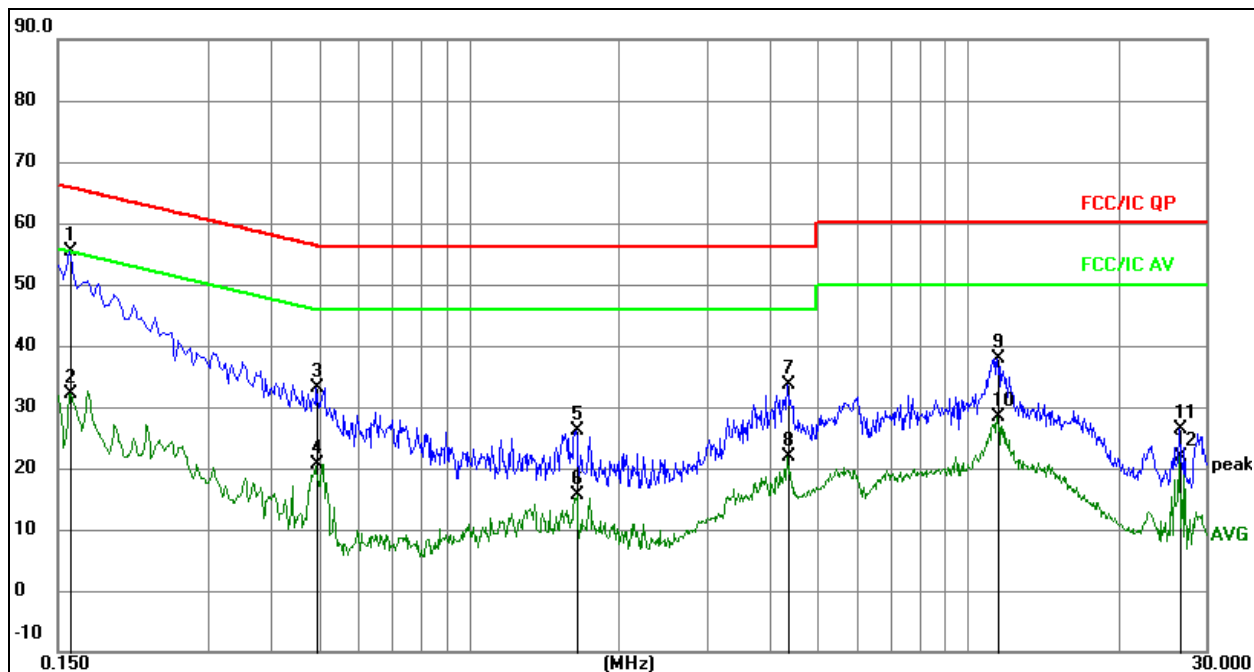
- The Product was placed on a nonconductive table 0.8 m above the horizontal ground reference plane, and 0.4 m from the vertical ground reference plane, and connected to the main through Line Impedance Stability Network (L.I.S.N).
- The RBW of the receiver was set at 9 kHz in 150 kHz ~ 30MHz with Peak and AVG detector in Max Hold mode. Run the receiver's pre-scan to record the maximum disturbance generated from Product in all power lines in the full band.
- For each frequency whose maximum record was higher or close to limit, measure its QP and AVG values and record.

### 6.4 EUT Operating Conditions

The EUT was configured for testing in a typical fashion (as a customer would normally use it). The EUT has been programmed to continuously transmit during test. This operating condition was tested and used to collect the included data.

## 6.5 Test Result

Temperature:	26 °C	Relative Humidity:	54%
Pressure:	101KPa	Phase :	L
Test Mode:	Mode 7	Test Voltage :	DC 5V from PC

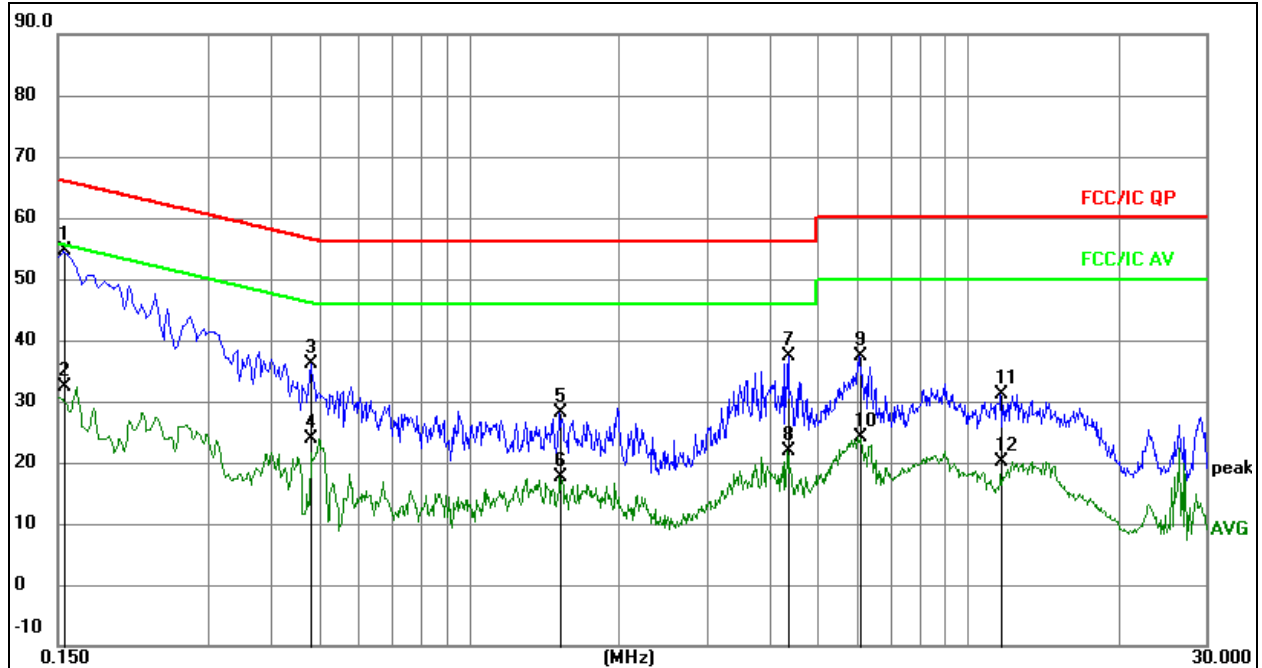


### Remark:

1. All readings are Quasi-Peak and Average values.
2. Factor = Insertion Loss + Cable Loss.
3. Measurement=Reading Level+ Correct Factor
4. Over=Measurement-Limit

No.	Mk.	Freq. MHz	Reading Level	Correct Factor dB	Measure- ment dBuV	Limit dBuV	Over dB	Detector
1	*	0.1590	35.20	20.07	55.27	65.52	-10.25	QP
2		0.1590	12.15	20.07	32.22	55.52	-23.30	AVG
3		0.4965	13.17	20.08	33.25	56.06	-22.81	QP
4		0.4965	0.66	20.08	20.74	46.06	-25.32	AVG
5		1.6395	6.06	20.10	26.16	56.00	-29.84	QP
6		1.6395	-4.43	20.10	15.67	46.00	-30.33	AVG
7		4.3485	13.38	20.14	33.52	56.00	-22.48	QP
8		4.3485	1.62	20.14	21.76	46.00	-24.24	AVG
9		11.4765	17.71	20.21	37.92	60.00	-22.08	QP
10		11.4765	8.17	20.21	28.38	50.00	-21.62	AVG
11		26.6100	6.08	20.29	26.37	60.00	-33.63	QP
12		26.6100	1.59	20.29	21.88	50.00	-28.12	AVG

Temperature:	26 °C	Relative Humidity:	54%
Pressure:	101KPa	Phase :	N
Test Mode:	Mode 7	Test Voltage :	DC 5V from PC



Remark:

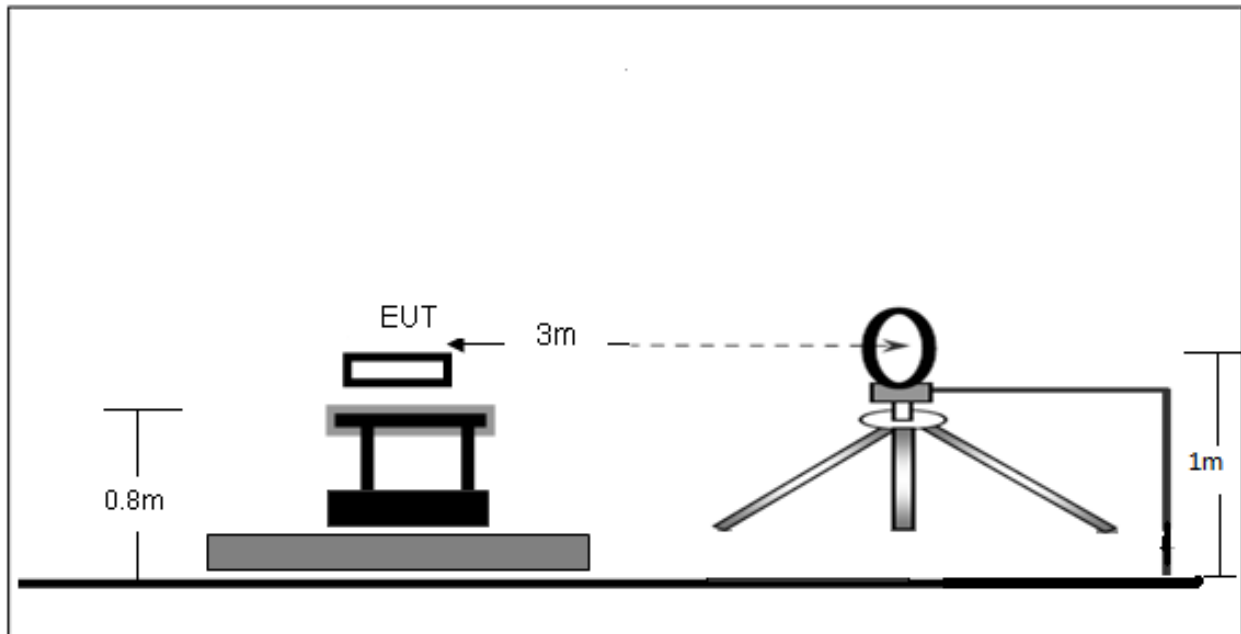
1. All readings are Quasi-Peak and Average values.
2. Factor = Insertion Loss + Cable Loss.
3. Measurement=Reading Level+ Correct Factor
4. Over=Measurement-Limit

No.	Mk.	Freq.	Reading Level	Correct Factor	Measurement	Limit	Over	Detector
		MHz		dB	dBuV	dBuV	dB	
1	*	0.1545	34.44	20.07	54.51	65.75	-11.24	QP
2		0.1545	12.25	20.07	32.32	55.75	-23.43	AVG
3		0.4830	16.14	20.08	36.22	56.29	-20.07	QP
4		0.4830	3.84	20.08	23.92	46.29	-22.37	AVG
5		1.5225	7.97	20.10	28.07	56.00	-27.93	QP
6		1.5225	-2.55	20.10	17.55	46.00	-28.45	AVG
7		4.3710	17.35	20.14	37.49	56.00	-18.51	QP
8		4.3710	1.76	20.14	21.90	46.00	-24.10	AVG
9		6.0765	17.12	20.15	37.27	60.00	-22.73	QP
10		6.0765	3.98	20.15	24.13	50.00	-25.87	AVG
11		11.6700	10.93	20.22	31.15	60.00	-28.85	QP
12		11.6700	-0.15	20.22	20.07	50.00	-29.93	AVG

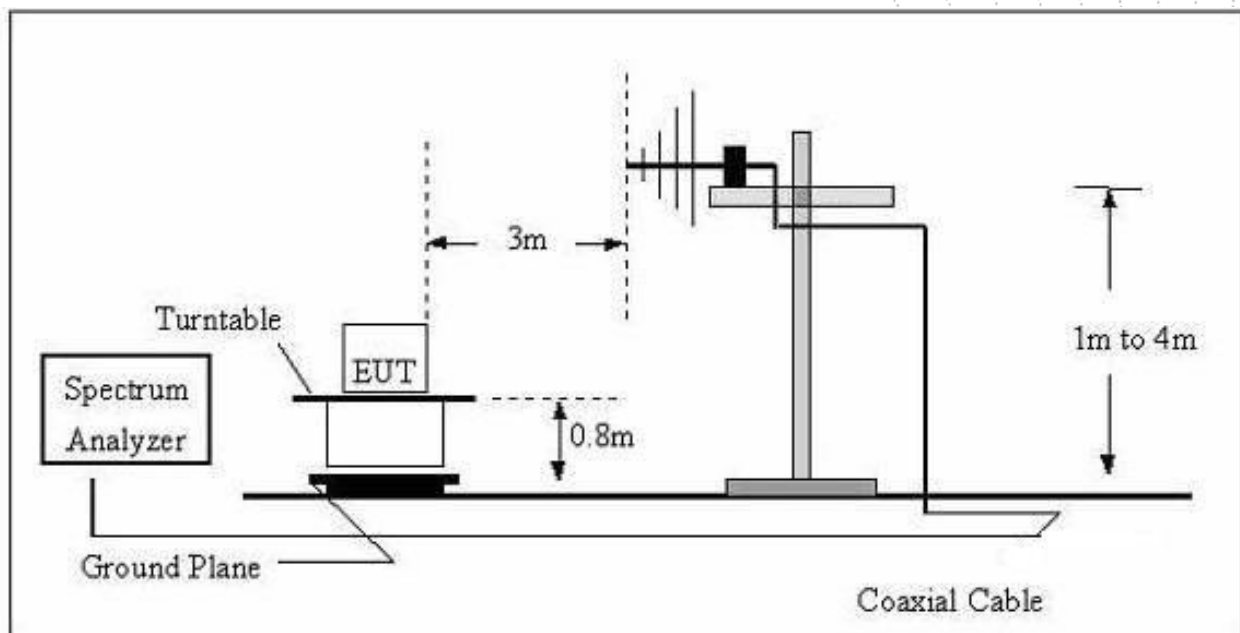
## 7. Radiated Emissions

### 7.1 Block Diagram Of Test Setup

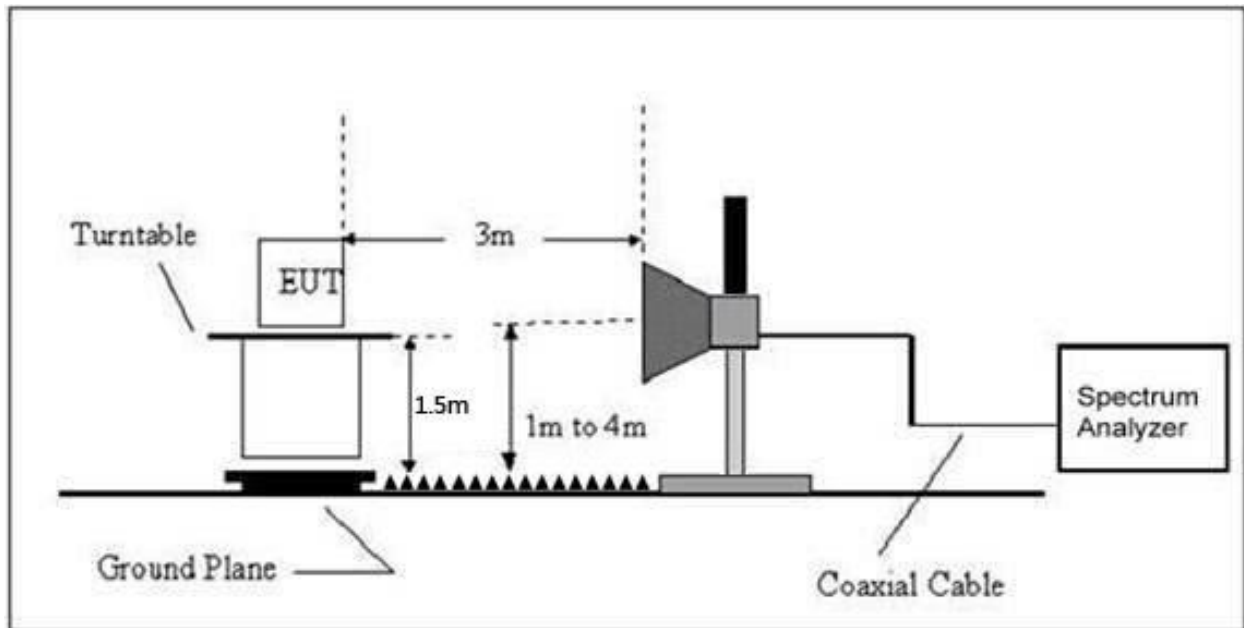
(A) Radiated Emission Test-Up Frequency Below 30MHz



(B) Radiated Emission Test-Up Frequency 30MHz~1GHz



(C) Radiated Emission Test-Up Frequency Above 1GHz



## 7.2 Limit

20dBc in any 100 kHz bandwidth outside the operating frequency band. In case the emission fall within the restricted band specified on 15.205(a), then the 15.209(a) limit in the table below has to be followed.

Frequency (MHz)	Field Strength uV/m	Distance (m)	Field Strength Limit at 3m Distance	
			uV/m	dBuV/m
0.009 ~ 0.490	$2400/F(\text{kHz})$	300	$10000 * 2400/F(\text{kHz})$	$20\log^{(2400/F(\text{kHz}))} + 80$
0.490 ~ 1.705	$24000/F(\text{kHz})$	30	$100 * 24000/F(\text{kHz})$	$20\log^{(24000/F(\text{kHz}))} + 40$
1.705 ~ 30	30	30	$100 * 30$	$20\log^{(30)} + 40$
30 ~ 88	100	3	100	$20\log^{(100)}$
88 ~ 216	150	3	150	$20\log^{(150)}$
216 ~ 960	200	3	200	$20\log^{(200)}$
Above 960	500	3	500	$20\log^{(500)}$

### LIMITS OF RADIATED EMISSION MEASUREMENT (Above 1000MHz)

FREQUENCY (MHz)	Limit (dBuV/m) (at 3M)	
	PEAK	AVERAGE
Above 1000	74	54

Notes:

- (1) The limit for radiated test was performed according to FCC PART 15C.
- (2) The tighter limit applies at the band edges.
- (3) Emission level (dBuV/m)=20log Emission level (uV/m).



# FREQUENCY RANGE OF RADIATED MEASUREMENT (For unintentional radiators)

Highest frequency generated or Upper frequency of measurement used in the device or on which the device operates or tunes (MHz)	Range (MHz)
Below 1.705	30
1.705 – 108	1000
108 – 500	2000
500 – 1000	5000
Above 1000	5 <sup>th</sup> harmonic of the highest frequency or 40 GHz, whichever is lower

## 7.3 Test Procedure

Receiver Parameter	Setting
Attenuation	Auto
9kHz~150kHz	RBW 200Hz for QP
150kHz~30MHz	RBW 9kHz for QP
30MHz~1000MHz	RBW 120kHz for QP

Spectrum Parameter	Setting
1-25GHz	RBW 1 MHz /VBW 1 MHz for Peak, RBW 1 MHz / VBW 10Hz for Average

Below 1GHz test procedure as below:

- The EUT was placed on the top of a rotating table 0.8 meters above the ground at a 3 meter semi-anechoic chamber. The table was rotated 360 degrees to determine the position of the highest radiation.
- The EUT was set 3 meters away from the interference-receiving antenna, which was mounted on the top of a variable-height antenna tower.
- The antenna height is varied from one meter to four meters above the ground to determine the maximum value of the field strength. Both horizontal and vertical polarizations of the antenna are set to make the measurement.
- For each suspected emission, the EUT was arranged to its worst case and then the antenna was tuned to heights from 1 meter to 4 meters (for the test frequency of below 30MHz, the antenna was tuned to heights 1 meter) and the rotatable table was turned from 0 degrees to 360 degrees to find the maximum reading.
- The test-receiver system was set to Peak Detect Function and Specified Bandwidth with Maximum Hold Mode.
- If the emission level of the EUT in peak mode was 10dB lower than the limit specified, then testing could be stopped and the peak values of the EUT would be reported. Otherwise the emissions that did not have 10dB margin would be re-tested one by one using peak, quasi-peak or average method as specified and then reported in a data sheet.

Above 1GHz test procedure as below:

- Different between above is the test site, change from Semi- Anechoic Chamber to fully Anechoic Chamber and change form table 0.8 metre to 1.5 metre (Above 18GHz the distance is 1 meter and table is 1.5 metre).
- Test the EUT in the lowest channel, the middle channel, the Highest channel.

Note:

Both horizontal and vertical antenna polarities were tested and performed pretest to three orthogonal axis. The worst case emissions were reported.

Above 1GHz test procedure as below:

- The EUT was placed on the top of a rotating table 1.5 meters above the ground at a 3 meter chamber. The table was rotated 360 degrees to determine the position of the highest radiation.
- The EUT was set 3 meters away from the interference-receiving antenna, which was mounted on the top of a variable-height antenna tower.
- The antenna height is varied from one meter to four meters above the ground to determine the maximum value of the field strength. Both horizontal and vertical polarizations of the antenna are set to make the measurement.
- For each suspected emission, the EUT was arranged to its worst case and then the antenna was tuned to heights from 1 meter to 4 meters and the rota table was turned from 0 degrees to 360 degrees to find the maximum reading.
- The test-receiver system was set to Peak Detect Function and Specified Bandwidth with Maximum Hold Mode.
- If the emission level of the EUT in peak mode was 10dB lower than the limit specified, then testing could be stopped and the peak values of the EUT would be reported. Otherwise the emissions that did not have 10dB margin would be re-tested one by one using peak, quasi-peak or average method as specified and then reported in a data sheet.
- Test the EUT in the lowest channel, the Highest channel.

Note:

Both horizontal and vertical antenna polarities were tested and performed pretest to three orthogonal axis. The worst case emissions were reported.

## 7.4 EUT Operating Conditions

The EUT was configured for testing in a typical fashion (as a customer would normally use it). The EUT has been programmed to continuously transmit during test. This operating condition was tested and used to collect the included data.

## 7.5 Test Result

Below 30MHz

Temperature:	26°C	Relative Humidity:	24%
Pressure:	101KPa	Test Voltage:	DC 5V from PC
Test Mode:	Mode 7	Polarization :	--

Freq. (MHz)	Reading (dBuV/m)	Limit (dBuV/m)	Margin (dB)	State P/F
--	--	--	--	PASS
--	--	--	--	PASS

Note:

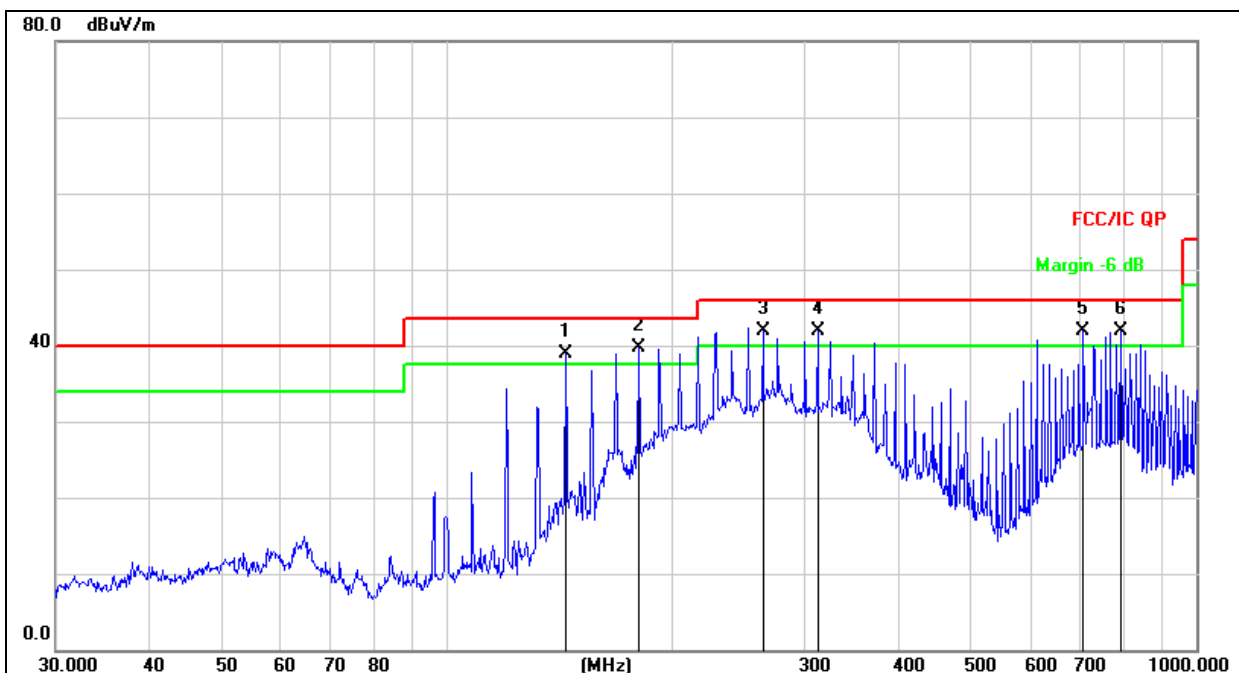
The amplitude of spurious emissions which are attenuated by more than 20dB below the permissible value has no need to be reported.

Distance extrapolation factor =  $40 \log (\text{specific distance/test distance})$  (dB);

Limit line = specific limits(dBuv) + distance extrapolation factor.

Between 30MHz – 1GHz

Temperature:	26°C	Relative Humidity:	54%
Pressure:	101KPa	Phase :	Horizontal
Test Mode:	Mode 7	Test Voltage:	DC 5V from PC

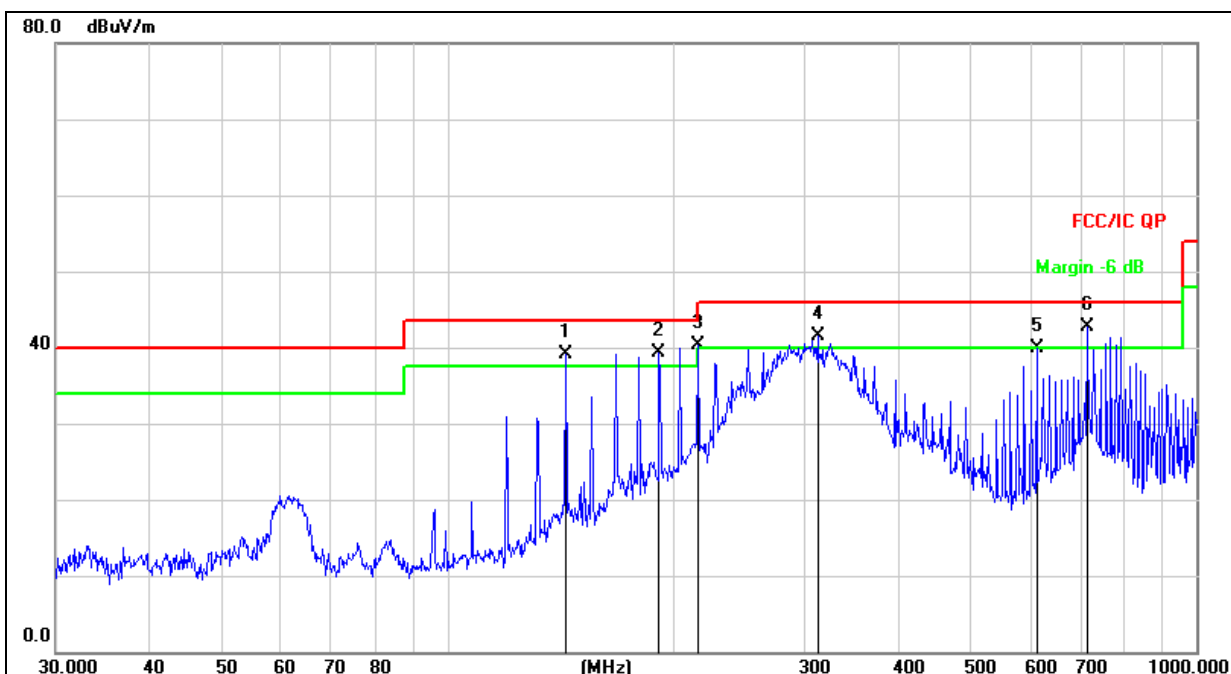


Remark:

1. Factor = Antenna Factor + Cable Loss – Pre-amplifier.
2. Measurement=Reading Level+ Correct Factor
3. Over=Measurement-Limit

No.	Mk.	Freq.	Reading Level	Correct Factor	Measurement	Limit	Over	
		MHz	dBuV	dB	dBuV/m	dB/m	dB	Detector
1	!	143.8293	57.85	-19.00	38.85	43.50	-4.65	QP
2	*	180.0165	56.98	-17.20	39.78	43.50	-3.72	QP
3	!	263.8190	55.91	-14.00	41.91	46.00	-4.09	QP
4	!	312.1792	54.66	-12.81	41.85	46.00	-4.15	QP
5	!	706.6997	47.44	-5.61	41.83	46.00	-4.17	QP
6	!	793.3958	46.48	-4.48	42.00	46.00	-4.00	QP

Temperature:	26°C	Relative Humidity:	54%
Pressure:	101KPa	Phase :	Vertical
Test Mode:	Mode 7	Test Voltage:	DC 5V from PC



Remark:

1. Factor = Antenna Factor + Cable Loss – Pre-amplifier.
2. Measurement=Reading Level+ Correct Factor
3. Over=Measurement-Limit

No.	Mk.	Freq.	Reading Level	Correct Factor	Measurement	Limit	Over	
		MHz	dBuV	dB	dBuV/m	dB/m	dB	Detector
1	!	143.8293	58.03	-19.00	39.03	43.50	-4.47	QP
2	!	191.7450	55.64	-16.33	39.31	43.50	-4.19	QP
3	!	216.0240	55.64	-15.26	40.38	46.00	-5.62	QP
4	!	312.1792	54.33	-12.81	41.52	46.00	-4.48	QP
5		612.0642	46.72	-6.81	39.91	46.00	-6.09	QP
6	*	714.1734	48.25	-5.51	42.74	46.00	-3.26	QP

Between 1GHz – 25GHz

GFSK 1M							
Polar (H/V)	Frequency (MHz)	Reading Level (dBuV/m)	Correct Factor (dB)	Measurement (dBuV/m)	Limits (dBuV/m)	Over (dB)	Detector Type
Low channel							
V	4804.00	69.40	-19.99	49.41	74.00	-24.59	PK
V	4804.00	53.29	-19.99	33.30	54.00	-20.70	AV
V	7206.00	68.38	-14.22	54.16	74.00	-19.84	PK
V	7206.00	54.24	-14.22	40.02	54.00	-13.98	AV
H	4804.00	68.37	-19.99	48.38	74.00	-25.62	PK
H	4804.00	53.79	-19.99	33.80	54.00	-20.20	AV
H	7206.00	69.78	-14.22	55.56	74.00	-18.44	PK
H	7206.00	52.31	-14.22	38.09	54.00	-15.91	AV
Middle channel							
V	4880.00	68.29	-19.84	48.45	74.00	-25.55	PK
V	4880.00	54.36	-19.84	34.52	54.00	-19.48	AV
V	7320.00	69.99	-13.90	56.09	74.00	-17.91	PK
V	7320.00	52.59	-13.90	38.69	54.00	-15.31	AV
H	4880.00	67.28	-19.84	47.44	74.00	-26.56	PK
H	4880.00	52.38	-19.84	32.54	54.00	-21.46	AV
H	7320.00	68.52	-13.90	54.62	74.00	-19.38	PK
H	7320.00	53.66	-13.90	39.76	54.00	-14.24	AV
High channel							
V	4960.00	68.80	-19.68	49.12	74.00	-24.88	PK
V	4960.00	54.04	-19.68	34.36	54.00	-19.64	AV
V	7440.00	69.79	-13.57	56.22	74.00	-17.78	PK
V	7440.00	54.40	-13.57	40.83	54.00	-13.17	AV
H	4960.00	69.87	-19.68	50.19	74.00	-23.81	PK
H	4960.00	53.49	-19.68	33.81	54.00	-20.19	AV
H	7440.00	67.82	-13.57	54.25	74.00	-19.75	PK
H	7440.00	52.50	-13.57	38.93	54.00	-15.07	AV

Remark:

1. Measurement = Reading Level + Correct Factor,  
Correct Factor = Antenna Factor + Cable Loss – Pre-amplifier,  
Over= Measurement – Limit
- 2.If peak below the average limit, the average emission was no test.
3. In restricted bands of operation, The spurious emissions below the permissible value more than 20dB
4. The amplitude of spurious emissions which are attenuated by more than 20dB below the permissible value has no need to be reported.

GFSK 2M							
Polar (H/V)	Frequency (MHz)	Reading Level (dBuV/m)	Correct Factor (dB)	Measurement (dBuV/m)	Limits (dBuV/m)	Over (dB)	Detector Type
Low channel							
V	4804.00	67.23	-19.99	47.24	74.00	-26.76	PK
V	4804.00	52.50	-19.99	32.51	54.00	-21.49	AV
V	7206.00	68.25	-14.22	54.03	74.00	-19.97	PK
V	7206.00	54.25	-14.22	40.03	54.00	-13.97	AV
H	4804.00	67.24	-19.99	47.25	74.00	-26.75	PK
H	4804.00	52.67	-19.99	32.68	54.00	-21.32	AV
H	7206.00	68.23	-14.22	54.01	74.00	-19.99	PK
H	7206.00	53.24	-14.22	39.02	54.00	-14.98	AV
Middle channel							
V	4880.00	67.63	-19.84	47.79	74.00	-26.21	PK
V	4880.00	54.42	-19.84	34.58	54.00	-19.42	AV
V	7320.00	67.94	-13.90	54.04	74.00	-19.96	PK
V	7320.00	54.55	-13.90	40.65	54.00	-13.35	AV
H	4880.00	67.85	-19.84	48.01	74.00	-25.99	PK
H	4880.00	52.70	-19.84	32.86	54.00	-21.14	AV
H	7320.00	68.18	-13.90	54.28	74.00	-19.72	PK
H	7320.00	54.24	-13.90	40.34	54.00	-13.66	AV
High channel							
V	4960.00	68.92	-19.68	49.24	74.00	-24.76	PK
V	4960.00	53.80	-19.68	34.12	54.00	-19.88	AV
V	7440.00	67.11	-13.57	53.54	74.00	-20.46	PK
V	7440.00	52.37	-13.57	38.80	54.00	-15.20	AV
H	4960.00	68.54	-19.68	48.86	74.00	-25.14	PK
H	4960.00	53.29	-19.68	33.61	54.00	-20.39	AV
H	7440.00	68.03	-13.57	54.46	74.00	-19.54	PK
H	7440.00	53.93	-13.57	40.36	54.00	-13.64	AV

**Remark:**

1. Measurement = Reading Level + Correct Factor,  
Correct Factor = Antenna Factor + Cable Loss – Pre-amplifier,  
Over= Measurement – Limit
- 2.If peak below the average limit, the average emission was no test.
3. In restricted bands of operation, The spurious emissions below the permissible value more than 20dB
4. The amplitude of spurious emissions which are attenuated by more than 20dB below the permissible value has no need to be reported.



## 8. Radiated Band Emission Measurement And Restricted Bands Of Operation

### 8.1 Block Diagram Of Test Setup

Radiated Emission Test-Up Frequency Above 1GHz



### 8.2 Limit

FCC Part15 C Section 15.209 and 15.205

(a) Except as shown in paragraph (d) of this section, only spurious emissions are permitted in any of the frequency bands listed below:

MHz	MHz	MHz	GHz
0.090-0.110	16.42-16.423	399.9-410	4.5-5.15
0.495-0.505	16.69475-16.69525	608-614	5.35-5.46
2.1735-2.1905	16.80425-16.80475	960-1240	7.25-7.75
4.125-4.128	25.5-25.67	1300-1427	8.025-8.5
4.17725-4.17775	37.5-38.25	1435-1626.5	9.0-9.2
4.20725-4.20775	73-74.6	1645.5-1646.5	9.3-9.5
6.215-6.218	74.8-75.2	1660-1710	10.6-12.7
6.26775-6.26825	108-121.94	1718.8-1722.2	13.25-13.4
6.31175-6.31225	123-138	2200-2300	14.47-14.5
8.291-8.294	149.9-150.05	2310-2390	15.35-16.2
8.362-8.366	156.52475-156.52525	2483.5-2500	17.7-21.4
8.37625-8.38675	156.7-156.9	2690-2900	22.01-23.12
8.41425-8.41475	162.0125-167.17	3260-3267	23.6-24.0
12.29-12.293	167.72-173.2	3332-3339	31.2-31.8
12.51975-12.52025	240-285	3345.8-3358	36.43-36.5
12.57675-12.57725	322-335.4	3600-4400	( <sup>2</sup> )
13.36-13.41			



## LIMITS OF RADIATED EMISSION MEASUREMENT (Above 1000MHz)

FREQUENCY (MHz)	Limit (dBuV/m) (at 3M)	
	PEAK	AVERAGE
Above 1000	74	54

## Notes:

- (1) The limit for radiated test was performed according to FCC PART 15C.
- (2) The tighter limit applies at the band edges.
- (3) Emission level (dBuV/m)=20log Emission level (uV/m).

### 8.3 Test Procedure

Receiver Parameter	Setting
Attenuation	Auto
Start Frequency	2300MHz
Stop Frequency	2520
RB / VB (emission in restricted band)	1 MHz / 1 MHz for Peak, 1 MHz / 10Hz for Average

Above 1GHz test procedure as below:

- a. The EUT was placed on the top of a rotating table 1.5 meters above the ground at a 3 meter chamber. The table was rotated 360 degrees to determine the position of the highest radiation.
- b. The EUT was set 3 meters away from the interference-receiving antenna, which was mounted on the top of a variable-height antenna tower.
- c. The antenna height is varied from one meter to four meters above the ground to determine the maximum value of the field strength. Both horizontal and vertical polarizations of the antenna are set to make the measurement.
- d. For each suspected emission, the EUT was arranged to its worst case and then the antenna was tuned to heights from 1 meter to 4 meters and the rota table was turned from 0 degrees to 360 degrees to find the maximum reading.
- e. The test-receiver system was set to Peak Detect Function and Specified Bandwidth with Maximum Hold Mode.
- f. If the emission level of the EUT in peak mode was 10dB lower than the limit specified, then testing could be stopped and the peak values of the EUT would be reported. Otherwise the emissions that did not have 10dB margin would be re-tested one by one using peak, quasi-peak or average method as specified and then reported in a data sheet.
- g. Test the EUT in the lowest channel, the Highest channel.

## Note:

Both horizontal and vertical antenna polarities were tested and performed pretest to three orthogonal axis. The worst case emissions were reported.

### 8.4 EUT operating Conditions

The EUT was configured for testing in a typical fashion (as a customer would normally use it). The EUT has been programmed to continuously transmit during test. This operating condition was tested and used to collect the included data.

## 8.5 Test Result

	Polar (H/V)	Frequency (MHz)	Reading Level (dBuV/m)	Correct Factor (dB)	Measure- ment (dBuV/m)	Limits (dBuV/m)		Result
					PK	PK	AV	
GFSK 1M	Low Channel 2402MHz							
	H	2390.00	70.56	-25.43	45.13	74.00	54.00	PASS
	H	2400.00	71.71	-25.40	46.31	74.00	54.00	PASS
	V	2390.00	72.71	-25.43	47.28	74.00	54.00	PASS
	V	2400.00	76.95	-25.40	51.55	74.00	54.00	PASS
	High Channel 2480MHz							
	H	2483.50	76.48	-25.15	51.33	74.00	54.00	PASS
	H	2500.00	74.38	-25.10	49.28	74.00	54.00	PASS
	V	2483.50	71.61	-25.15	46.46	74.00	54.00	PASS
	V	2500.00	71.32	-25.10	46.22	74.00	54.00	PASS
GFSK 2M	Low Channel 2402MHz							
	H	2390.00	72.34	-25.43	46.91	74.00	54.00	PASS
	H	2400.00	73.43	-25.40	48.03	74.00	54.00	PASS
	V	2390.00	72.07	-25.43	46.64	74.00	54.00	PASS
	V	2400.00	76.60	-25.40	51.20	74.00	54.00	PASS
	High Channel 2480MHz							
	H	2483.50	76.40	-25.15	51.25	74.00	54.00	PASS
	H	2500.00	72.01	-25.10	46.91	74.00	54.00	PASS
	V	2483.50	71.11	-25.15	45.96	74.00	54.00	PASS
	V	2500.00	71.48	-25.10	46.38	74.00	54.00	PASS
Remark: 1. Measurement = Reading Level + Correct Factor, Correct Factor = Antenna Factor + Cable Loss – Pre-amplifier, Over= Measurement – Limit 2. If the PK measured levels comply with average limit, then the average level were deemed to comply with average limit. 3 In restricted bands of operation, The spurious emissions below the permissible value more than 20dB 4. The amplitude of spurious emissions which are attenuated by more than 20dB below the permissible value has no need to be reported.								

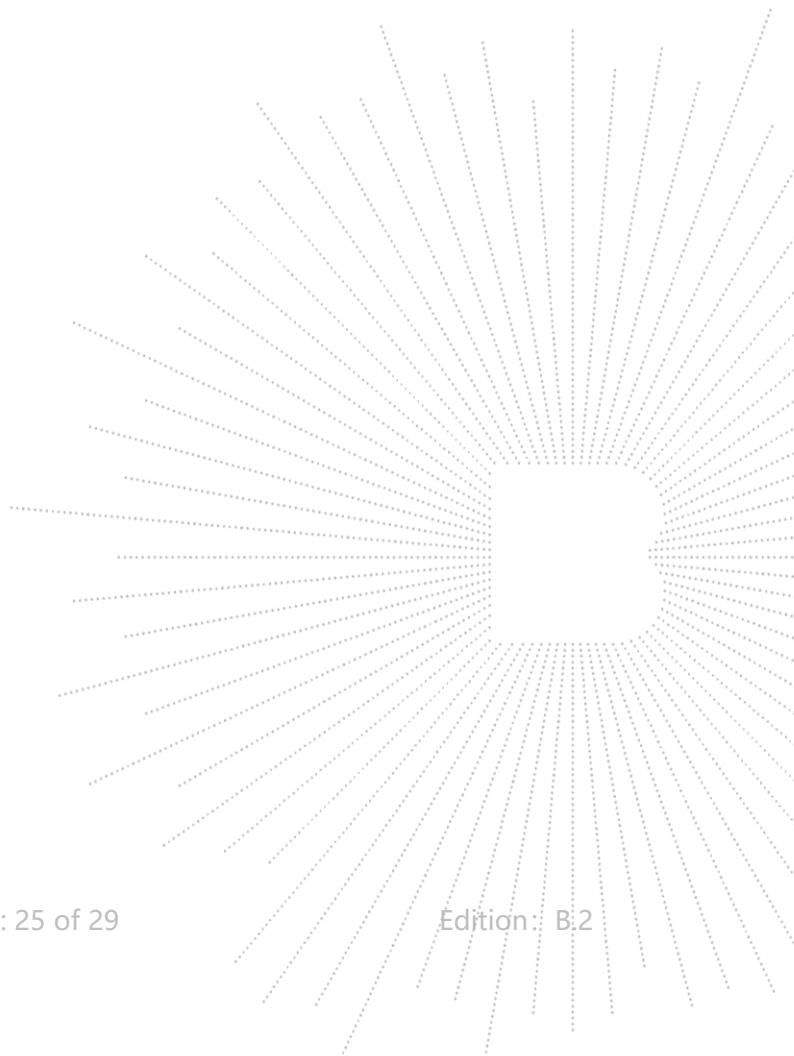
## 9. Antenna Requirement

### 9.1 Limit

15.203 requirement: For intentional device, according to 15.203: an intentional radiator shall be designed to ensure that no antenna other than that furnished by the responsible party shall be used with the device.

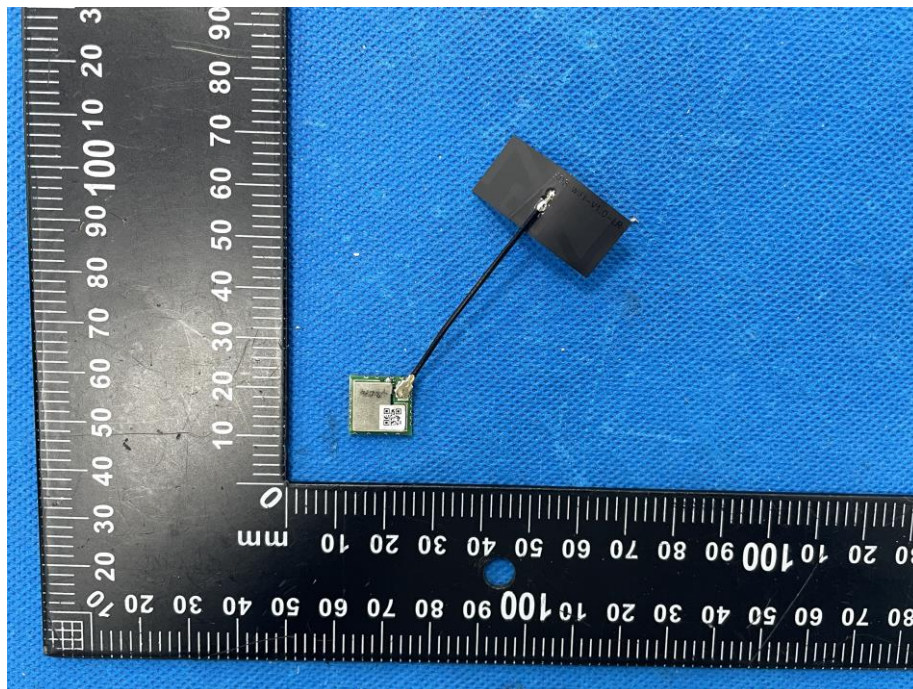
### 9.2 Test Result

The EUT antenna is FPC Antenna, Antenna Gain is 2.6 dBi, fulfill the requirement of this section.

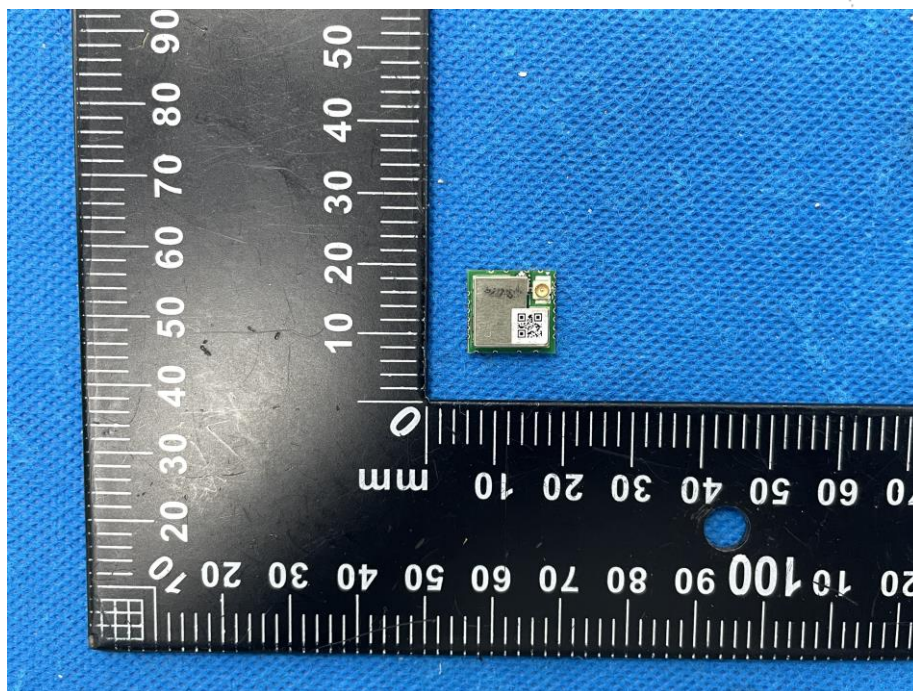


## 10. EUT Photographs

EUT Photo 1



EUT Photo 2



NOTE: Appendix-Photographs Of EUT Constructional Details.

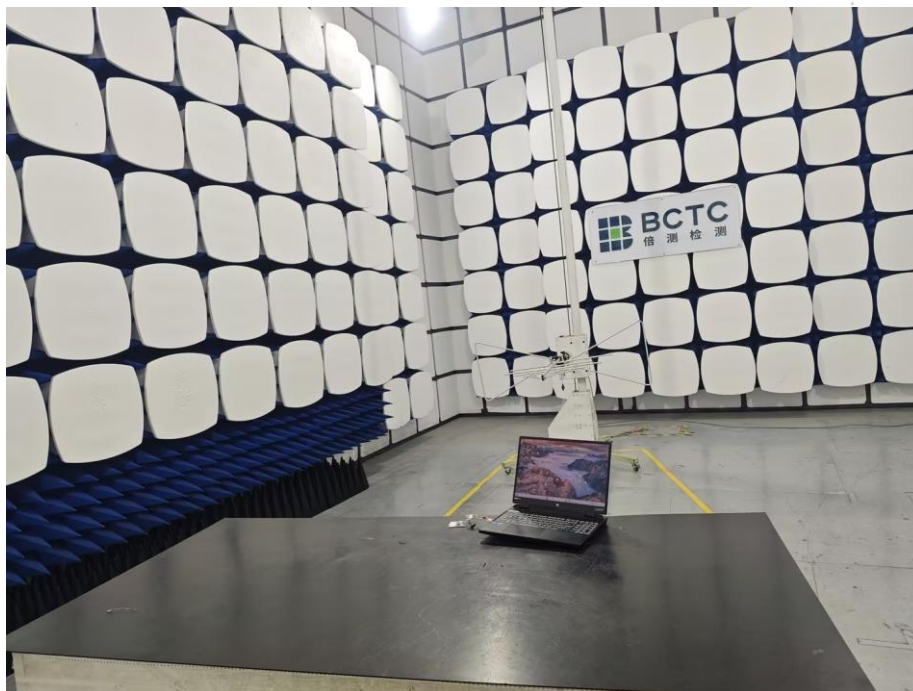


## 11. EUT Test Setup Photographs

### Conducted Emissions Photo



### Radiated Measurement Photos





## STATEMENT

1. The equipment lists are traceable to the national reference standards.
2. The test report can not be partially copied unless prior written approval is issued from our lab.
3. The test report is invalid without the "special seal for inspection and testing".
4. The test report is invalid without the signature of the approver.
5. The test process and test result is only related to the Unit Under Test.
6. Sample information is provided by the client and the laboratory is not responsible for its authenticity.
7. The quality system of our laboratory is in accordance with ISO/IEC17025.
8. If there is any objection to this test report, the client should inform issuing laboratory within 15 days from the date of receiving test report.

Address:

1-2/F., Building B, Pengzhou Industrial Park, No.158, Fuyuan 1st Road, Zhancheng, Fuhai Subdistrict, Bao'an District, Shenzhen, Guangdong, China

TEL: 400-788-9558

P.C.: 518103

FAX: 0755-33229357

Website: <http://www.chnbctc.com>

Consultation E-mail: [bctc@bctc-lab.com.cn](mailto:bctc@bctc-lab.com.cn)

Complaint/Advice E-mail: [advice@bctc-lab.com.cn](mailto:advice@bctc-lab.com.cn)

※※※※※ END ※※※※※