

PHILIPS

Wireless Home Speaker

TAFS1GC



User manual

TAFS1GC/37, TAFS1/37

Register your product and get support at
www.philips.com/support



Contents

1	Important	2
	Safety	2

2	Your wireless speaker	3
	Introduction	3
	What's in the box	3
	Overview of the speaker	3

3	Get started	4
	Plugin the power	4
	Turn on/off	4

4	Play from wi-Fi devices	5
	Play from WI-FI devices	5
	Step	5
	Upgrade	6

5	Play from Bluetooth devices	7
	Play from Bluetooth devices	7
	Control playback	7
		7

6	Product information	8
----------	----------------------------	----------

7	Troubleshooting	9
	General	9
	Bluetooth	9

8	Notice	10
	Compliance	10
	Care of the environment	10
	FCC Statement	10
	Listen to Spotify	11
	Trademark notice	12

1 Important

Safety

Important safety instructions

- Make sure that the power supply voltage corresponds to the voltage on the back or the underside of the unit.
- The speaker shall not be exposed to dripping or splashing
- Do not place any source of danger on the speaker (e.g. liquid filled objects, lit candles).
- Make sure that there is enough free space around the speaker for ventilation.
- Please use the speaker safely in an environment with temperature between 0 °C and 40 °C .
- Only use attachments and accessories specified by the manufacturer



Warning

- Never remove the casing of this speaker
- Never lubricate any part of this speaker.
- Place this speaker on a flat, hard and stable surface
- Never place this speaker on other electrical equipment.
- Only use this speaker indoors. Keep this speaker away from water, moisture and liquid-filled objects
- Keep this speaker away from direct sunlight, naked flames or heat
- Risk of explosion if a battery is replaced by an incorrect type

2 Your wireless speaker

Congratulations on your purchase, and welcome to Philips! To fully benefit from the support that Philips offers, register your product at www.philips.com/welcome.

Introduction

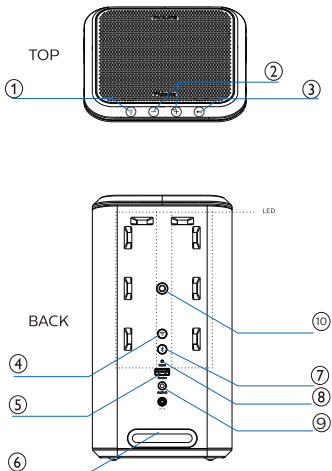
With this speaker, you can enjoy audio from Wi-Fi connected devices

What's in the box

Check and identify the contents of your package:

- Speaker
- Power cable
- Quick start guide
- Safety sheet
- Worldwide warranty

Overview of the speaker



- ① LEDs are also used to indicate the Status of Smart Speaker.
 - Press once to change LED light mode.
- ②
 - Press to increase or decrease volume.
 - Press and once to increase the LED light brightness.
 - Press and once to decrease the LED light brightness
- ③
 - In Bluetooth mode, press to pause or resume play.
 - In Bluetooth mode, press twice to play the next track.
 - In Wi-Fi mode, press to pause or resume play.
 - Press and once to select next LED light color.
- ④
 - Trigger Wi-Fi setup.
- ⑤
 - SERVICE (No Playback Function).
- ⑥
 - Connect to the power supply.
- ⑦
 - Enter Bluetooth pairing mode.
 - Clear Bluetooth pairing information.
- ⑧
 - RESET. Press and hold for 5 seconds to restore the factory settings.
- ⑨
 - Audio input from, for example, an MP3 player (3.5mm jack).
- ⑩
 - Wall nut. This structure can be used to hang the equipment on the wall.

3 Get started

Always follow the instructions in this chapter in sequence.

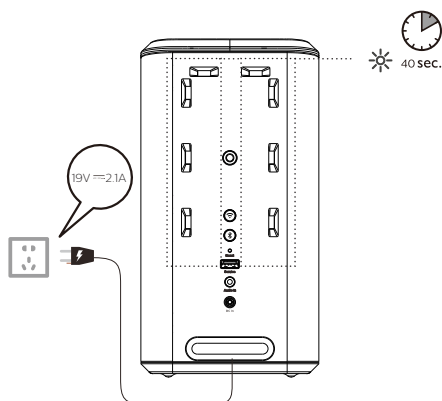
Plug in the power

The speaker is powered by AC input.

Note

- Power requirement: 19V \approx 2.1A .
- After the speaker is powered on, the LED flashes 40S .

Connect the AC IN socket on the speaker to an outlet (19V \approx 2.1A) by using the provided Power cable.



! Caution

- Risk of speaker damage! Make sure the power supply voltage corresponds to the voltage printed on the back or the underside of the speaker.
- Risk of electric shock! When unplug the Power cable, always pull the plug from the socket. Never pull the cable.
- Use only a power cable specified by the manufacturer or sold with this speaker

Turn on/off

To turn the speaker off, pull the cable.

Note

- The speaker will turn off automatically after 15 minutes without user operations and music playback.

4 Play from WI-FI devices

Play from wi-Fi devices

With this speaker, you can enjoy audio from your WI-FI device

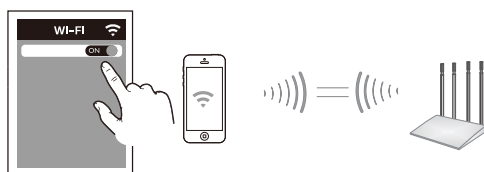
Note

- Make sure that the W-Fi function is enabled on your device.
- Keep away from any other electronic device that may cause interference.

- 1 Download and run the Philips Sound app on a phone or tablet. Set up your device in the Philips Sound app.

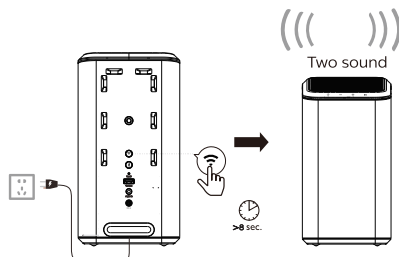


- 2 Turn on the Wi-Fi function on the smartphone and connect to the Wi-Fi network.

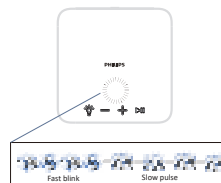


STEP

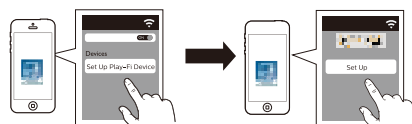
- (1) Press and hold for 8 sec of wifi connection button located at the back cabinet to reset the Wi-Fi connection.
- (2) Until the second chime can be heard.



- (3) The wifi light on the top panel is changing from fast Blink (Attempting to connect or connecting to a Wi-Fi router) to Slow Pulse (Setup Mode).



- (4) Open the Play-Fi App. Set up the unit with Philips Sound app.



- (5) The wifi light on the top panel is changed to solid when the connection is successful.

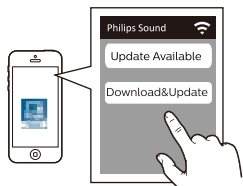


Upgrade

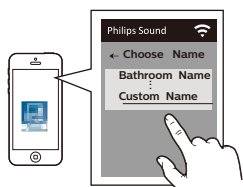
Upgrade to latest firmware version when first time set up.

Note

- Always upgrade your device with latest firmware version to improve the functionality and features of your device.



After connection, you can change the device name to your custom name. Otherwise, it follows the default name.



Note

1. When the first time set up is not successful, you need to step out of Philips Sound app.
2. Restart the app.
3. Start the set up again.




5 Play from Bluetooth devices

Play from Bluetooth devices

With this speaker, you can enjoy audio from your Bluetooth device.



 Note

- Make sure that the Bluetooth function is enabled on your device.
- The maximum distance for pairing the speaker and your Bluetooth device is 20 meters (66 feet).
- Keep away from any other electronic device that may cause interference.

- 1 Press  , it will enter Bluetooth pairing mode automatically.
- 2 Enable Bluetooth and select “Play-Fi Device (xxxxxx)-BT” in the Bluetooth list on your device for pairing.
- 3 Play audio on your Bluetooth device to start streaming music.



LED indicator	Description
Blinking blue slowly	Ready for pairing
	Reconnecting the last connected device
Solid blue	Connected

 Note

- To disconnect a device, press and hold  for 2 seconds until the LED indicator blinks **blue** quickly.
- When you turn on the speaker, it always automatically tries to reconnect the last successfully connected device.
- To clear the pairing information, press and hold  for 2 seconds until the LED indicator slowly blinking **blue** for 3 times.

Control playback

During playing the music,

	Press to pause or resume play
	Press twice to play the next track
	Adjust the volume

6 Product information



Note

- Product information is subject to change without prior notice.

General information

Model name:	TAFS1GC/37, TAFS1/37
Power supply:	19V---2.1A
Dimensions (W x H x D)	115x116x212mm
Weight (main unit)	1.79kg

Amplifier

Output power	40W
Frequency response	20—20000 Hz
Signal to noise ratio	70db

Speakers

Impedance	40Hm
Maximum input power	30W,10W
Size	3.5inch, 1inch
USB Rating	5V/1A

Bluetooth

Bluetooth version	4.2
Frequency range	2400-2483.5MHz
Maximum transimtion power	9.12dBm
Compatible Bluetooth profiles	A2DP
Bluetooth range	approx.20m

Ambilight Module

2.4G Wi-Fi transmit frequency range 2412~2472 MHz

2.4G Wi-Fi transmit power	<20dBm
5G Wi-Fi transmitter frequency range	5150~5250MHZ ,5250~5350MHz, 5470~5725MHz
5G Wi-Fi transmit power	<23dBm
5G Wi-Fi transmitter frequency range	5725~5825MHz
5G Wi-Fi transmit power	<14dBm

Play-FI module

2.4G Wi-Fi transmit frequency range: 2412~2472 MHz

2.4G Wi-Fi transmit power	<20dBm
5G Wi-Fi transmitter frequency range	5150~5250MHz,5250~5350MHz,5470~5725MHz
5G Wi-Fi transmit power	<20dBm
5G Wi-Fi transmitter frequency range	5725~5825MHz
5G Wi-Fi transmit power	<14dBm

7 Troubleshooting



Warning

- Never remove the casing of the speaker.

To keep the warranty valid, never try to repair the speaker yourself.

If you encounter problems when using this speaker, check the following points before requesting service. If the problem remains unsolved, go to the Philips website (www.philips.com/welcome). When you contact Philips, ensure that the speaker is nearby and the model number and serial number are available.

General

No power

- Make sure the speaker is fully charged.
- Make sure the **AC IN** socket of the speaker is properly connected.
- As a power-saving feature, the speaker turns off automatically 15 minutes after no audio signal is received or no audio device is connected.

No sound

- Adjust the volume on this speaker.
- Adjust the volume on the connected device.
- In **AUDIO IN** mode, make sure that music playback through Bluetooth is stopped.
- Make sure that your Bluetooth device is within the operational range.

No response from the speaker

- Restart the speaker.

Bluetooth

The audio quality is poor after connection with a Bluetooth-enabled device

- The Bluetooth reception is poor. Move the device closer to this speaker or remove any obstacle between them.

Fail to find [Philips 6205] on your Bluetooth device for pairing

- Press and hold  for 2 seconds to enter Bluetooth pairing mode, and then try again.

Cannot connect with your Bluetooth device

- The Bluetooth function of your device is not enabled. Refer to the user manual of your device to find out how to enable the function.
- This speaker is not in pairing mode.
- This speaker is already connected to another Bluetooth-enabled device. Disconnect and try again.

8 Notice

Any changes or modifications made to this device that are not expressly approved by **MMD Hong Kong Holding Limited** may void the user's authority to operate the product.

Compliance



This product complies with the radio interference requirements of the European community. Hereby, **MMD Hong Kong Holding Limited** declares that essential requirements and other relevant provisions of RED Directive 2014/53/EU and UK radio Equipment Regulations SI 2017 No 1206. You can find the Declaration of Conformity on www.philips.com/support.

Care of the environment

Disposal of your old product



Your product is designed and manufactured with high quality materials and components, which can be recycled and reused.



This symbol on a product means that the product is covered by European Directive 2012/19/EU.



This symbol means that the product contains batteries covered by European Directive 2013/56/EU which cannot be disposed of with normal household waste.

Inform yourself about the local separate collection system for electrical and electronic products and batteries. Follow local rules and

never dispose of the product and batteries with normal household waste. Correct disposal of old products and batteries helps prevent negative consequences for the environment and human health.

Environmental information

All unnecessary packaging has been omitted. We have tried to make the packaging easy to separate into three materials: cardboard (box), polystyrene foam (buffer) and polyethylene (bags, protective foam sheet.)

Your system consists of materials which can be recycled and reused if disassembled by a specialized company. Please observe the local regulations regarding the disposal of packaging materials, exhausted batteries and old equipment.

FCC Statement

This device complies with Part 15 of the FCC Rules. Operation is subject to the following two conditions: (1) This device may not cause harmful interference, and (2) This device must accept any interference received, including interference that may cause undesired operation.

Warning: Changes or modifications not expressly approved by the party responsible for compliance could void the user's authority to operate the equipment.

Note: This equipment has been tested and found to comply with the limits for a Class B digital device, pursuant to Part 15 of the FCC Rules.

These limits are designed to provide reasonable protection against harmful interference in a residential installation.

This equipment generates, uses and can radiate radio frequency energy and, if not installed and used in accordance with the instructions, may cause harmful interference to radio communications. However, there is no guarantee that interference will not occur in a particular installation. If this equipment does cause harmful interference to radio or

television reception, which can be determined by turning the equipment off and on, the user is encouraged to try to correct the interference by one or more of the following measures: (1) Reorient or relocate the receiving antenna. (2) Increase the separation between the equipment and receiver. (3) Connect the equipment into an outlet on a circuit different from that to which the receiver is connected. (4) Consult the dealer or an experienced radio/TV technician for help.

RF Warning Statement

This equipment must be installed and operated in accordance with provided instructions and the antenna(s) used for this transmitter must be installed to provide a separation distance of at least 20 cm from all persons and must not be co-located or operating in conjunction with any other antenna or transmitter. End-users and installers must be provided with antenna installation instructions and consider removing the no-collocation statement.

IC Warning : This device contains licence-exempt transmitter(s)/receiver(s) that comply with Innovation, Science and Economic Development Canada's licence-exempt RSS(s). Operation is subject to the following two conditions:
(1) This device may not cause interference.
(2) This device must accept any interference, including interference that may cause undesired operation of the device.

L'émetteur/récepteur exempt de licence contenu dans le présent appareil est conforme aux CNR d'Innovation, Sciences et Développement économique Canada applicables aux appareils radio exempts de licence. L'exploitation est autorisée aux deux conditions suivantes :

- 1) L'appareil ne doit pas produire de brouillage;
- 2) L'appareil doit accepter tout brouillage radioélectrique subi, même si le brouillage est susceptible d'en compromettre le fonctionnement.

The device meets the exemption from the routine evaluation limits in section 2.5 of RSS 102 and compliance with RSS-102 RF exposure, users can obtain Canadian information on RF exposure and compliance. Le dispositif rencontre l'exemption des limites courantes d'évaluation dans la section 2.5 de RSS 102 et la conformité à l'exposition de RSS-102 rf, utilisateurs peut obtenir l'information canadienne sur l'exposition et la conformité de rf.

the device for operation in the band 5150-5250 MHz is only for indoor use to reduce the potential for harmful interference to co-channel mobile satellite systems

les dispositifs fonctionnant dans la bande 5150-5250 MHz sont réservés uniquement pour une utilisation à l'intérieur afin de réduire les risques de brouillage préjudiciable aux systèmes de satellites mobiles utilisant les mêmes canaux;

This transmitter must not be co-located or operating in conjunction with any other antenna or transmitter. This equipment should be installed and operated with a minimum distance of 20 centimeters between the radiator and your body.

Cet émetteur ne doit pas être Co-placé ou ne fonctionnant en même temps qu'aucune autre antenne ou émetteur. Cet équipement devrait être installé et actionné avec une distance minimum de 20 centimètres entre le radiateur et votre corps.

Listen to Spotify

Use your phone, tablet or computer as a remote control for Spotify.
Go to spotify.com/connect to learn how

The Spotify Software is subject to third party licenses found here:
www.spotify.com/connect/third-party-licenses.

Trademark notice



For DTS patents, see <http://patents.dts.com>. Manufactured under license from DTS, Inc. (for companies headquartered in the U.S./Japan/Taiwan) or under license from DTS Licensing Limited (for all other companies). DTS, Play-Fi, and the DTS Play-Fi logo are registered trademarks or trademarks of DTS, Inc. in the United States and other countries. 2020 DTS, Inc. ALL RIGHTS RESERVED.

The Wi-Fi CERTIFIED Logo is a certification mark of Wi-Fi Alliance®.

To control this AirPlay 2 -enabled speaker, iOS 11.4 or later is required. Use of the Works with Apple badge means that an accessory has been designed to work specifically with the technology identified in the badge and has been certified by the developer to meet Apple performance standards.

Apple® and Airplay® are trademarks of Apple Inc., registered in the US and other countries.

The Spotify Software is subject to third party licenses found here: www.spotify.com/connect/third-party-licenses.

Use your phone, tablet or computer as a remote control for Spotify. Go to spotify.com/connect to learn how. The Bluetooth® word mark and logos are registered trademarks owned by Bluetooth SIG, Inc. and any use of such marks by MMD Hong Kong Holding Limited is under license. Other trademarks and trade names are those of their respective owners.

Chromecast built-in is a trademark of Google LLC.



Specifications are subject to change without notice.

Philips and the Philips Shield Emblem are registered trademarks of Koninklijke Philips N.V. and are used under license. This product has been manufactured by and is sold under the responsibility of MMD Hong Kong Holding Limited or one of its affiliates, and MMD Hong Kong Holding Limited is the warrantor in relation to this product.

