

Test Laboratory: BTL

Date: 2022/10/16

System Check_H750

Frequency: 750 MHz; Duty Cycle: 1:1; Room Ambient Temperature: 23.0°C; Liquid Temperature: 22.0°C
Medium parameters used: $f = 750 \text{ MHz}$; $\sigma = 0.905 \text{ S/m}$; $\epsilon_r = 42.477$; $\rho = 1000 \text{ kg/m}^3$

DASY5 Configuration:

- Area Scan Setting: Find Secondary Maximum Within: 2.0 dB and with a peak SAR value greater than 0.0012W/kg
- Electronics: DAE4 Sn1486; Calibrated: 2022/5/31
- Probe: EX3DV4 - SN7369; ConvF(10.39, 10.39, 10.39) @ 750 MHz; Calibrated: 2022/5/28
- Sensor-Surface: 2mm (Mechanical Surface Detection)
- Phantom: SAM Twin Phantom V5.0; Type: QD 000 P40 C; Serial:1661

Configuration/Pin=250mW/Area Scan (7x13x1):

Measurement grid: $dx=15\text{mm}$, $dy=15\text{mm}$

Maximum value of SAR (measured) = 2.51 W/kg

Configuration/Pin=250mW/Zoom Scan (5x5x7)/Cube 0:

Measurement grid: $dx=8\text{mm}$, $dy=8\text{mm}$, $dz=5\text{mm}$

Reference Value = 53.73 V/m; Power Drift = 0.00 dB

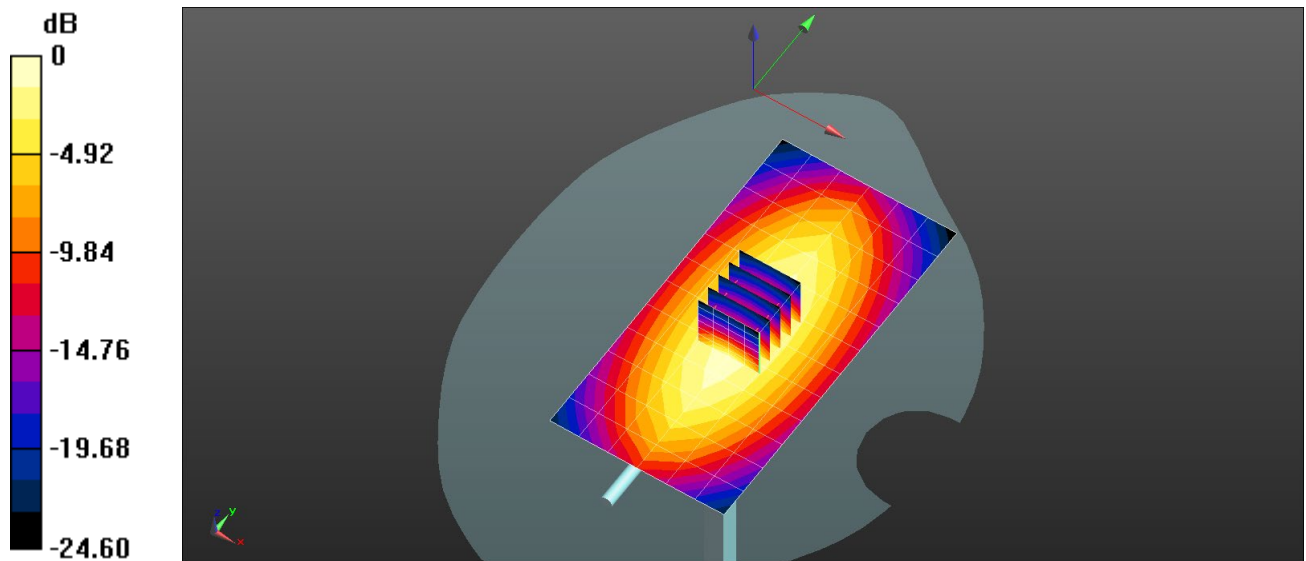
Peak SAR (extrapolated) = 2.92 W/kg

SAR(1 g) = 2.03 W/kg; SAR(10 g) = 1.37 W/kg

Smallest distance from peaks to all points 3 dB below = 21.5 mm

Ratio of SAR at M2 to SAR at M1 = 69.2%

Maximum value of SAR (measured) = 2.53 W/kg



0 dB = 2.51 W/kg = 4.00 dBW/kg

Test Laboratory: BTL

Date: 2022/10/20

System Check_H750

Frequency: 750 MHz; Duty Cycle: 1:1; Room Ambient Temperature: 23.0°C; Liquid Temperature: 22.0°C

Medium parameters used: $f = 750 \text{ MHz}$; $\sigma = 0.923 \text{ S/m}$; $\epsilon_r = 42.155$; $\rho = 1000 \text{ kg/m}^3$

DASY5 Configuration:

- Area Scan Setting: Find Secondary Maximum Within: 2.0 dB and with a peak SAR value greater than 0.0012W/kg
- Electronics: DAE4 Sn1486; Calibrated: 2022/5/31
- Probe: EX3DV4 - SN7369; ConvF(10.39, 10.39, 10.39) @ 750 MHz; Calibrated: 2022/5/28
- Sensor-Surface: 2mm (Mechanical Surface Detection)
- Phantom: SAM Twin Phantom V5.0; Type: QD 000 P40 C; Serial: TP-1897

Configuration/Pin=250mW/Area Scan (7x13x1):

Measurement grid: $dx=15\text{mm}$, $dy=15\text{mm}$

Maximum value of SAR (measured) = 2.56 W/kg

Configuration/Pin=250mW/Zoom Scan (5x5x7)/Cube 0:

Measurement grid: $dx=8\text{mm}$, $dy=8\text{mm}$, $dz=5\text{mm}$

Reference Value = 53.73 V/m; Power Drift = 0.00 dB

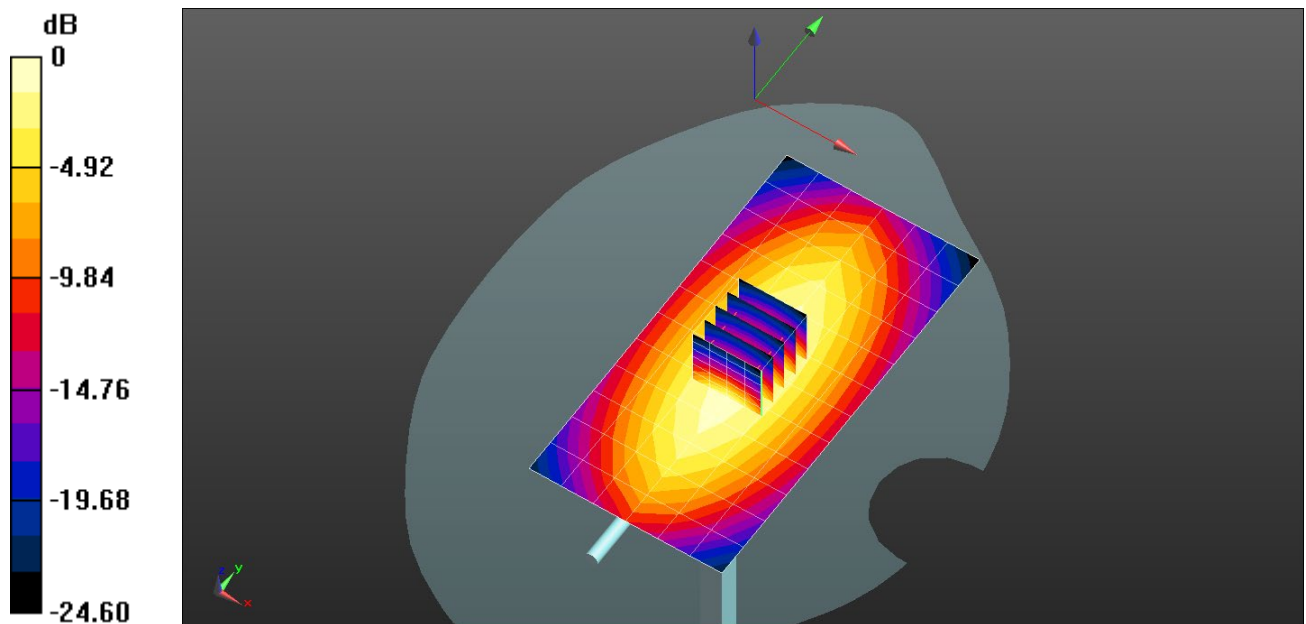
Peak SAR (extrapolated) = 2.98 W/kg

SAR(1 g) = 2.07 W/kg; SAR(10 g) = 1.4 W/kg

Smallest distance from peaks to all points 3 dB below = 21.5 mm

Ratio of SAR at M2 to SAR at M1 = 69.2%

Maximum value of SAR (measured) = 2.58 W/kg



0 dB = 2.56 W/kg = 4.09 dBW/kg

Test Laboratory: BTL

Date: 2022/10/21

System Check_H750

Frequency: 750 MHz; Duty Cycle: 1:1; Room Ambient Temperature: 23.0°C; Liquid Temperature: 22.0°C

Medium parameters used: $f = 750 \text{ MHz}$; $\sigma = 0.924 \text{ S/m}$; $\epsilon_r = 41.978$; $\rho = 1000 \text{ kg/m}^3$

DASY5 Configuration:

- Area Scan Setting: Find Secondary Maximum Within: 2.0 dB and with a peak SAR value greater than 0.0012W/kg
- Electronics: DAE4 Sn1486; Calibrated: 2022/5/31
- Probe: EX3DV4 - SN7369; ConvF(10.39, 10.39, 10.39) @ 750 MHz; Calibrated: 2022/5/28
- Sensor-Surface: 2mm (Mechanical Surface Detection)
- Phantom: SAM Twin Phantom V5.0; Type: QD 000 P40 C; Serial: TP-1897

Configuration/Pin=250mW 2/Area Scan (7x13x1):

Measurement grid: $dx=15\text{mm}$, $dy=15\text{mm}$

Maximum value of SAR (measured) = 2.67 W/kg

Configuration/Pin=250mW 2/Zoom Scan (5x5x7)/Cube 0:

Measurement grid: $dx=8\text{mm}$, $dy=8\text{mm}$, $dz=5\text{mm}$

Reference Value = 54.96 V/m; Power Drift = -0.01 dB

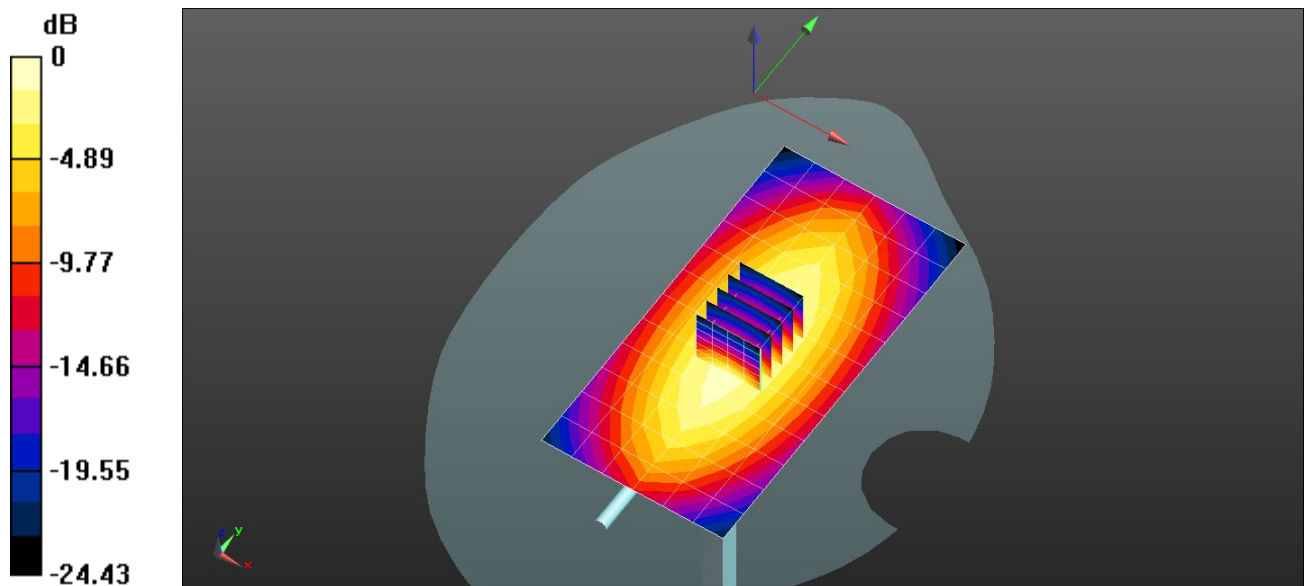
Peak SAR (extrapolated) = 3.11 W/kg

SAR(1 g) = 2.16 W/kg; SAR(10 g) = 1.46 W/kg

Smallest distance from peaks to all points 3 dB below = 21.5 mm

Ratio of SAR at M2 to SAR at M1 = 69.3%

Maximum value of SAR (measured) = 2.69 W/kg



0 dB = 2.67 W/kg = 4.26 dBW/kg

Test Laboratory: BTL

Date: 2021/10/21

System Check_H835

Frequency: 835 MHz; Duty Cycle: 1:1; Room Ambient Temperature: 23.0°C; Liquid Temperature: 22.0°C

Medium parameters used (interpolated): $f = 835$ MHz; $\sigma = 0.939$ S/m; $\epsilon_r = 41.717$; $\rho = 1000$ kg/m³

DASY5 Configuration:

- Area Scan Setting: Find Secondary Maximum Within: 2.0 dB and with a peak SAR value greater than 0.0012W/kg
- Electronics: DAE4 Sn1486; Calibrated: 2022/5/31
- Probe: EX3DV4 - SN7369; ConvF(10.02, 10.02, 10.02) @ 835 MHz; Calibrated: 2022/5/28
- Sensor-Surface: 2mm (Mechanical Surface Detection)
- Phantom: SAM Twin Phantom V5.0; Type: QD 000 P40 C; Serial: TP-1897

Configuration/Pin=250mW/Area Scan (7x13x1):

Measurement grid: dx=15mm, dy=15mm

Maximum value of SAR (measured) = 3.22 W/kg

Configuration/Pin=250mW/Zoom Scan (5x5x7)/Cube 0:

Measurement grid: dx=8mm, dy=8mm, dz=5mm

Reference Value = 59.38 V/m; Power Drift = 0.00 dB

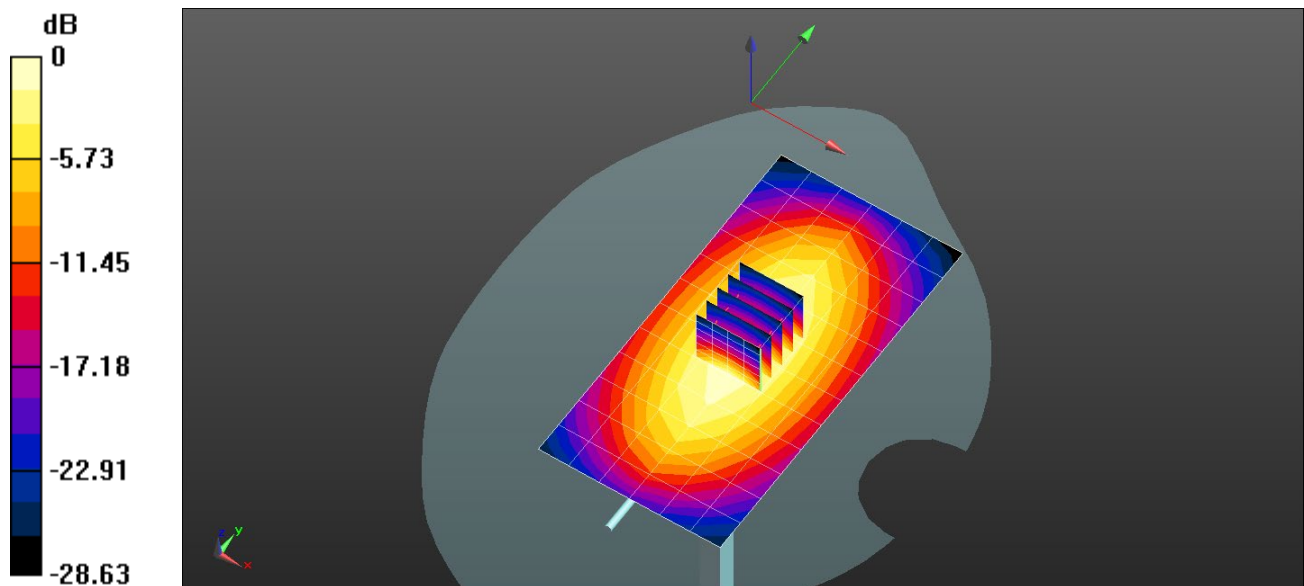
Peak SAR (extrapolated) = 3.84 W/kg

SAR(1 g) = 2.55 W/kg; SAR(10 g) = 1.65 W/kg

Smallest distance from peaks to all points 3 dB below = 16 mm

Ratio of SAR at M2 to SAR at M1 = 66.1%

Maximum value of SAR (measured) = 3.26 W/kg



0 dB = 3.22 W/kg = 5.07 dBW/kg

Test Laboratory: BTL

Date: 2021/10/15

System Check_H835

Frequency: 835 MHz; Duty Cycle: 1:1; Room Ambient Temperature: 23.0°C; Liquid Temperature: 22.0°C

Medium parameters used: $f = 835 \text{ MHz}$; $\sigma = 0.908 \text{ S/m}$; $\epsilon_r = 43.415$; $\rho = 1000 \text{ kg/m}^3$

DASY5 Configuration:

- Area Scan Setting: Find Secondary Maximum Within: 2.0 dB and with a peak SAR value greater than 0.0012W/kg
- Electronics: DAE4 Sn1486; Calibrated: 2022/5/31
- Probe: EX3DV4 - SN7369; ConvF(10.02, 10.02, 10.02) @ 835 MHz; Calibrated: 2022/5/28
- Sensor-Surface: 2mm (Mechanical Surface Detection)
- Phantom: SAM Twin Phantom V5.0; Type: QD 000 P40 C; Serial: TP-1897

Configuration/Pin=250mW/Area Scan (7x13x1):

Measurement grid: $dx=15\text{mm}$, $dy=15\text{mm}$

Maximum value of SAR (measured) = 2.96 W/kg

Configuration/Pin=250mW/Zoom Scan (5x5x7)/Cube 0:

Measurement grid: $dx=8\text{mm}$, $dy=8\text{mm}$, $dz=5\text{mm}$

Reference Value = 58.43 V/m; Power Drift = -0.01 dB

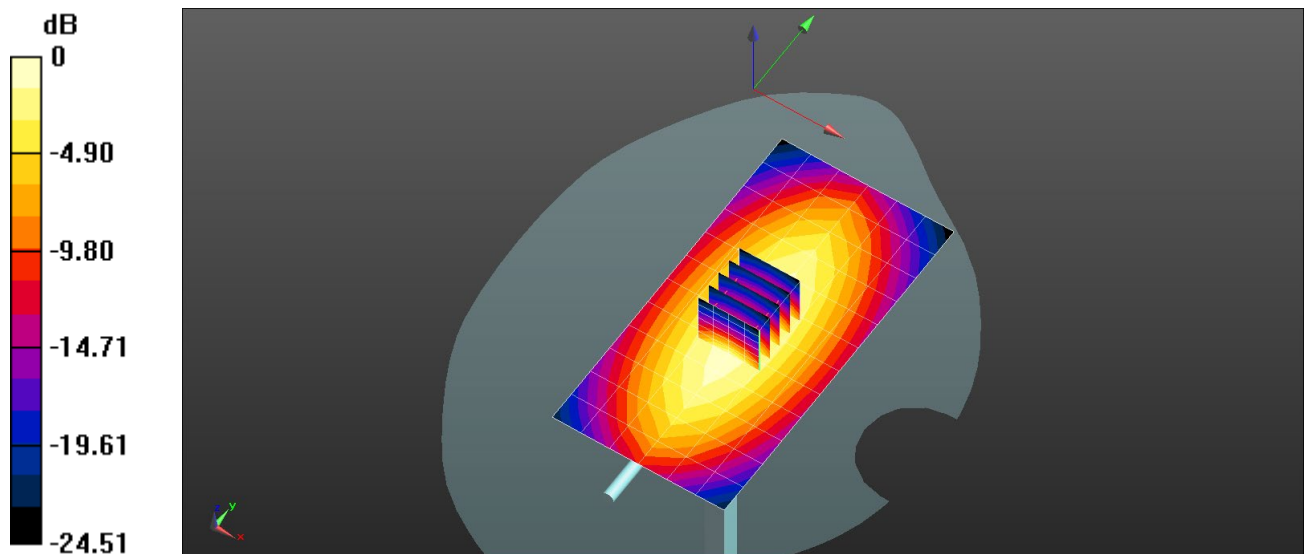
Peak SAR (extrapolated) = 3.44 W/kg

SAR(1 g) = 2.4 W/kg; SAR(10 g) = 1.62 W/kg

Smallest distance from peaks to all points 3 dB below = 21.5 mm

Ratio of SAR at M2 to SAR at M1 = 69.6%

Maximum value of SAR (measured) = 2.98 W/kg



0 dB = 2.96 W/kg = 4.72 dBW/kg

Test Laboratory: BTL

Date: 2022/10/15

System Check_H835

Frequency: 835 MHz; Duty Cycle: 1:1; Room Ambient Temperature: 23.0°C; Liquid Temperature: 22.0°C

Medium parameters used: $f = 835 \text{ MHz}$; $\sigma = 0.894 \text{ S/m}$; $\epsilon_r = 42.431$; $\rho = 1000 \text{ kg/m}^3$

DASY5 Configuration:

- Area Scan Setting: Find Secondary Maximum Within: 2.0 dB and with a peak SAR value greater than 0.0012W/kg
- Electronics: DAE4 Sn1289; Calibrated: 2022/5/31
- Probe: EX3DV4 - SN7678; ConvF(10.73, 10.73, 10.73) @ 835 MHz; Calibrated: 2022/8/30
- Sensor-Surface: 2mm (Mechanical Surface Detection)
- Phantom: Twin-SAM V5.0 (30deg probe tilt); Type: QD 000 P40 CD; Serial: xxxx

Configuration/Pin=250mW/Area Scan (7x13x1):

Measurement grid: $dx=15\text{mm}$, $dy=15\text{mm}$

Maximum value of SAR (measured) = 3.48 W/kg

Configuration/Pin=250mW/Zoom Scan (5x5x7)/Cube 0:

Measurement grid: $dx=8\text{mm}$, $dy=8\text{mm}$, $dz=5\text{mm}$

Reference Value = 63.85 V/m; Power Drift = -0.01 dB

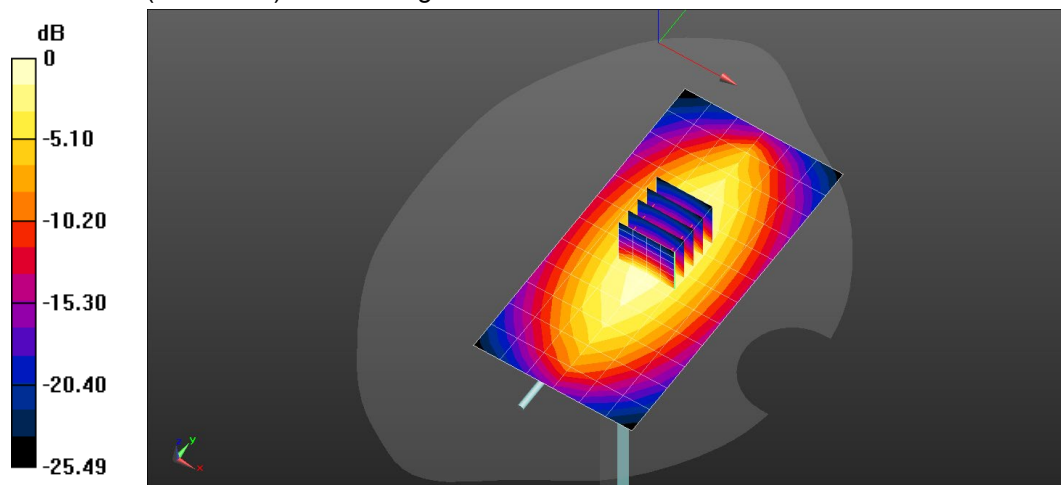
Peak SAR (extrapolated) = 4.68 W/kg

SAR(1 g) = 2.61 W/kg; SAR(10 g) = 1.67 W/kg

Smallest distance from peaks to all points 3 dB below = 16 mm

Ratio of SAR at M2 to SAR at M1 = 58.1%

Maximum value of SAR (measured) = 3.50 W/kg



0 dB = 3.48 W/kg = 5.41 dBW/kg

Test Laboratory: BTL

Date: 2022/10/20

System Check_H835

Frequency: 835 MHz; Duty Cycle: 1:1; Room Ambient Temperature: 23.0°C; Liquid Temperature: 22.0°C

Medium parameters used: $f = 835 \text{ MHz}$; $\sigma = 0.898 \text{ S/m}$; $\epsilon_r = 42.862$; $\rho = 1000 \text{ kg/m}^3$

DASY5 Configuration:

- Area Scan Setting: Find Secondary Maximum Within: 2.0 dB and with a peak SAR value greater than 0.0012W/kg
- Electronics: DAE4 Sn1289; Calibrated: 2022/5/31
- Probe: EX3DV4 - SN7678; ConvF(10.73, 10.73, 10.73) @ 835 MHz; Calibrated: 2022/8/30
- Sensor-Surface: 2mm (Mechanical Surface Detection)
- Phantom: Twin-SAM V5.0 (30deg probe tilt); Type: QD 000 P40 CD; Serial: 1897

Configuration/Pin=250mW/Area Scan (7x13x1):

Measurement grid: $dx=15\text{mm}$, $dy=15\text{mm}$

Maximum value of SAR (measured) = 3.49 W/kg

Configuration/Pin=250mW/Zoom Scan (5x5x7)/Cube 0:

Measurement grid: $dx=8\text{mm}$, $dy=8\text{mm}$, $dz=5\text{mm}$

Reference Value = 63.85 V/m; Power Drift = -0.01 dB

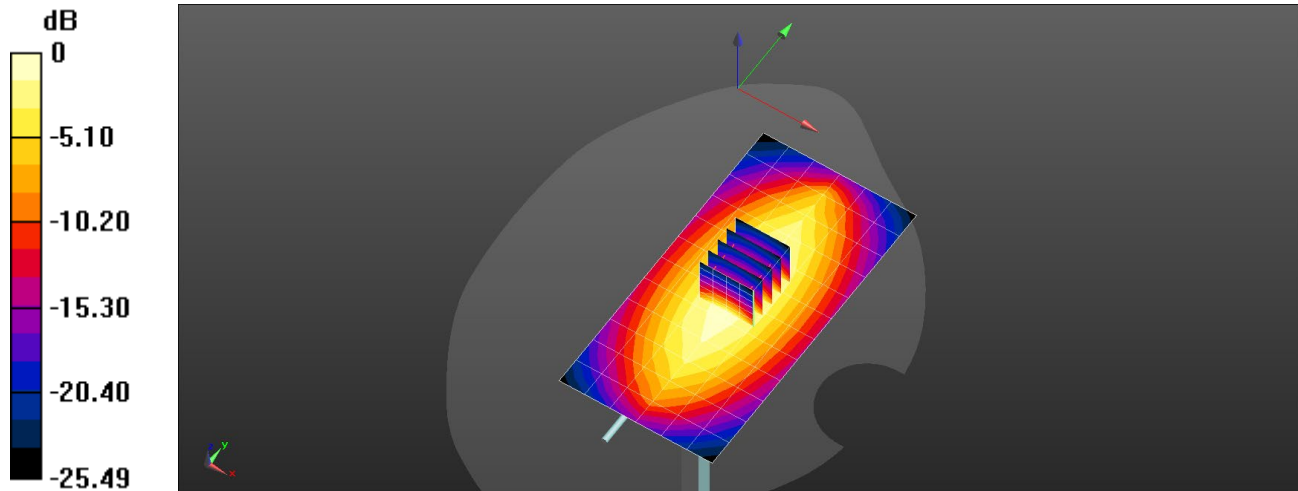
Peak SAR (extrapolated) = 4.70 W/kg

SAR(1 g) = 2.62 W/kg; SAR(10 g) = 1.67 W/kg

Smallest distance from peaks to all points 3 dB below = 16 mm

Ratio of SAR at M2 to SAR at M1 = 58.1%

Maximum value of SAR (measured) = 3.52 W/kg



0 dB = 3.49 W/kg = 5.43 dBW/kg

Test Laboratory: BTL

Date: 2022/10/20

System Check_H835

Frequency: 835 MHz; Duty Cycle: 1:1; Room Ambient Temperature: 23.0°C; Liquid Temperature: 22.0°C

Medium parameters used (interpolated): $f = 835 \text{ MHz}$; $\sigma = 0.921 \text{ S/m}$; $\epsilon_r = 41.895$; $\rho = 1000 \text{ kg/m}^3$

DASY5 Configuration:

- Area Scan Setting: Find Secondary Maximum Within: 2.0 dB and with a peak SAR value greater than 0.0012W/kg
- Electronics: DAE4 Sn1486; Calibrated: 2022/5/31
- Probe: EX3DV4 - SN7369; ConvF(10.02, 10.02, 10.02) @ 835 MHz; Calibrated: 2022/5/28
- Sensor-Surface: 2mm (Mechanical Surface Detection)
- Phantom: SAM Twin Phantom V5.0; Type: QD 000 P40 C; Serial: TP-1897

Configuration/Pin=250mW/Area Scan (7x13x1):

Measurement grid: $dx=15\text{mm}$, $dy=15\text{mm}$

Maximum value of SAR (measured) = 3.07 W/kg

Configuration/Pin=250mW/Zoom Scan (5x5x7)/Cube 0:

Measurement grid: $dx=8\text{mm}$, $dy=8\text{mm}$, $dz=5\text{mm}$

Reference Value = 58.08 V/m; Power Drift = 0.01 dB

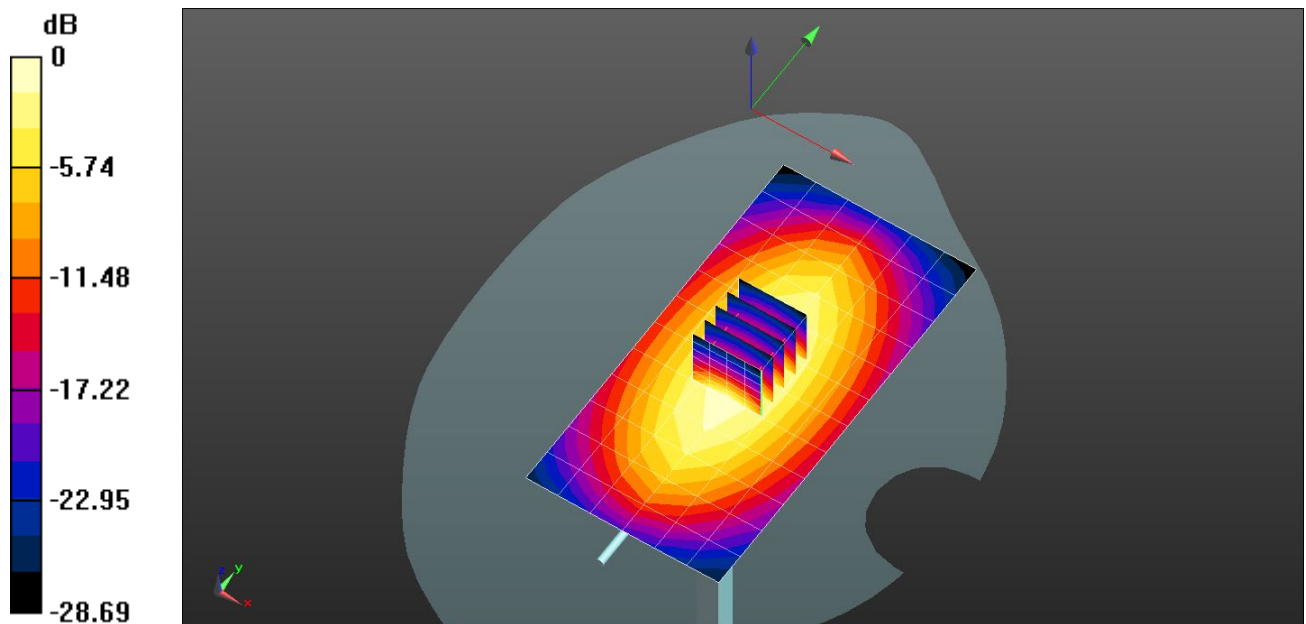
Peak SAR (extrapolated) = 3.66 W/kg

SAR(1 g) = 2.44 W/kg; SAR(10 g) = 1.58 W/kg

Smallest distance from peaks to all points 3 dB below = 16 mm

Ratio of SAR at M2 to SAR at M1 = 66.1%

Maximum value of SAR (measured) = 3.11 W/kg



0 dB = 3.07 W/kg = 4.87 dBW/kg

Test Laboratory: BTL

Date: 2022/10/24

System Check_H835

Frequency: 835 MHz; Duty Cycle: 1:1; Room Ambient Temperature: 23.0°C; Liquid Temperature: 22.0°C
Medium parameters used: $f = 835$ MHz; $\sigma = 0.904$ S/m; $\epsilon_r = 43.28$; $\rho = 1000$ kg/m³

DASY5 Configuration:

- Area Scan Setting: Find Secondary Maximum Within: 2.0 dB and with a peak SAR value greater than 0.0012W/kg
- Electronics: DAE4 Sn1486; Calibrated: 2022/5/31
- Probe: EX3DV4 - SN7369; ConvF(10.02, 10.02, 10.02) @ 835 MHz; Calibrated: 2022/5/28
- Sensor-Surface: 2mm (Mechanical Surface Detection)
- Phantom: SAM Twin Phantom V5.0; Type: QD 000 P40 C; Serial: TP-1897

Configuration/Pin=250mW/Area Scan (7x13x1):

Measurement grid: dx=15mm, dy=15mm

Maximum value of SAR (measured) = 2.91 W/kg

Configuration/Pin=250mW/Zoom Scan (5x5x7)/Cube 0:

Measurement grid: dx=8mm, dy=8mm, dz=5mm

Reference Value = 58.08 V/m; Power Drift = 0.01 dB

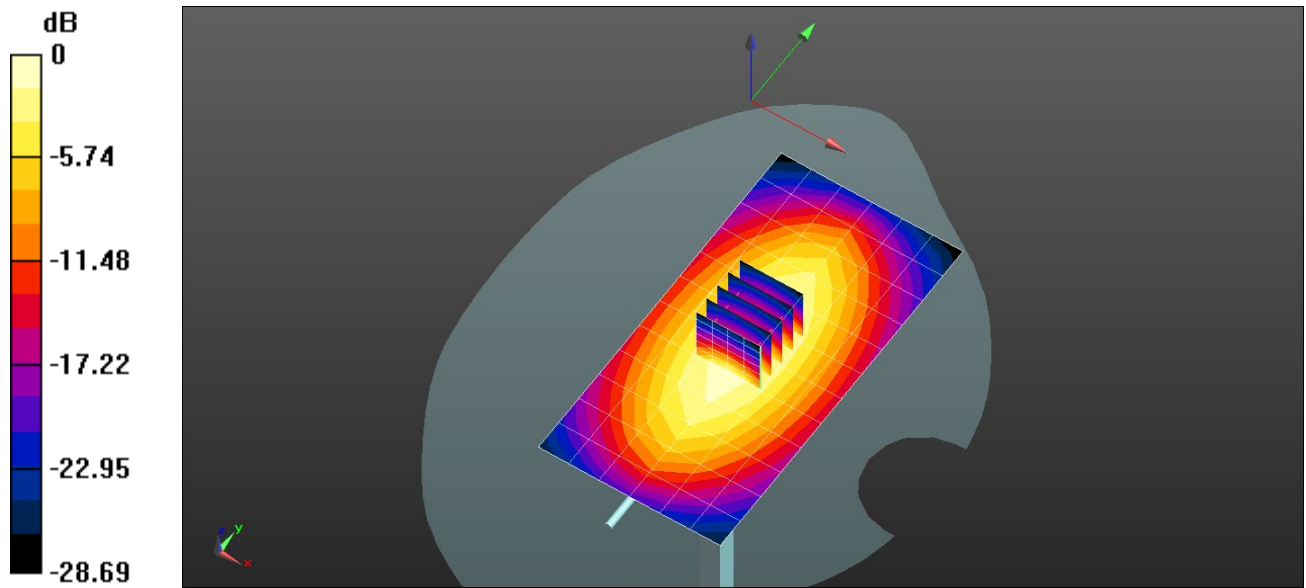
Peak SAR (extrapolated) = 3.47 W/kg

SAR(1 g) = 2.31 W/kg; SAR(10 g) = 1.5 W/kg

Smallest distance from peaks to all points 3 dB below = 16 mm

Ratio of SAR at M2 to SAR at M1 = 66.1%

Maximum value of SAR (measured) = 2.95 W/kg



0 dB = 2.91 W/kg = 4.65 dBW/kg

Test Laboratory: BTL

Date: 2022/10/20

System Check_H1800

Frequency: 1800 MHz; Duty Cycle: 1:1; Room Ambient Temperature: 23.0°C; Liquid Temperature: 22.0°C

Medium parameters used: $f = 1800 \text{ MHz}$; $\sigma = 1.404 \text{ S/m}$; $\epsilon_r = 39.906$; $\rho = 1000 \text{ kg/m}^3$

DASY5 Configuration:

- Area Scan Setting: Find Secondary Maximum Within: 2.0 dB and with a peak SAR value greater than 0.0012W/kg
- Electronics: DAE4 Sn1486; Calibrated: 2022/5/31
- Probe: EX3DV4 - SN7369; ConvF(8.67, 8.67, 8.67) @ 1800 MHz; Calibrated: 2022/5/28
- Sensor-Surface: 2mm (Mechanical Surface Detection)
- Phantom: SAM Twin Phantom V5.0; Type: QD 000 P40 C; Serial: 1661

Configuration/Pin=250mW/Area Scan (7x7x1):

Measurement grid: $dx=15\text{mm}$, $dy=15\text{mm}$

Maximum value of SAR (measured) = 13.8 W/kg

Configuration/Pin=250mW/Zoom Scan (5x5x7)/Cube 0:

Measurement grid: $dx=8\text{mm}$, $dy=8\text{mm}$, $dz=5\text{mm}$

Reference Value = 100.8 V/m; Power Drift = 0.01 dB

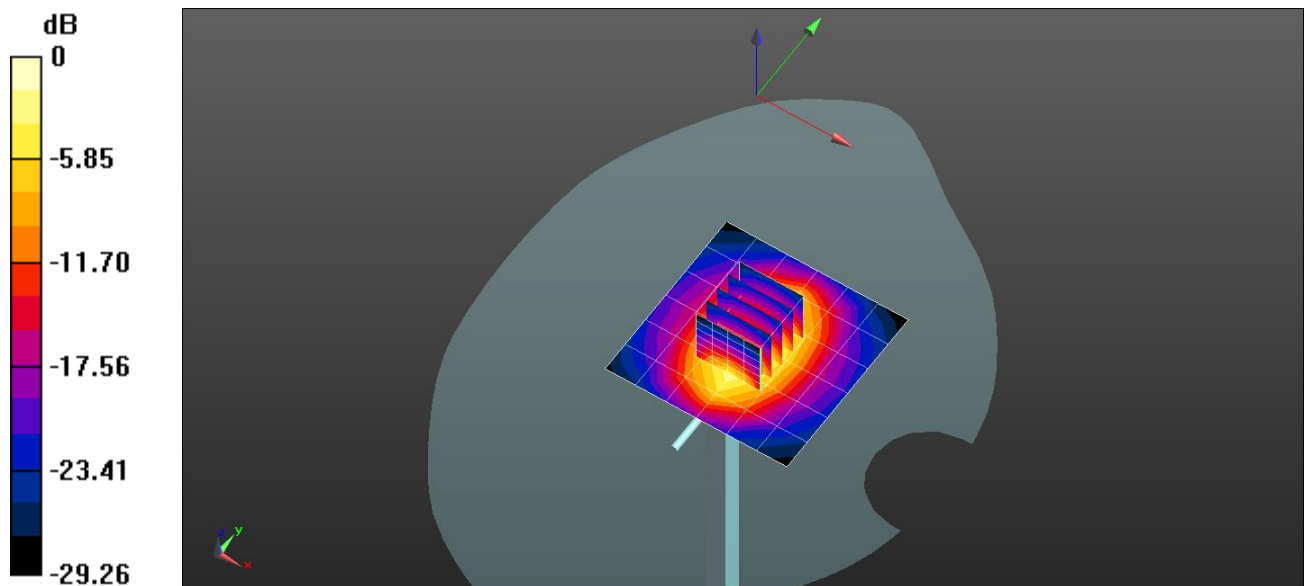
Peak SAR (extrapolated) = 17.2 W/kg

SAR(1 g) = 9.89 W/kg; SAR(10 g) = 5.34 W/kg

Smallest distance from peaks to all points 3 dB below = 10.7 mm

Ratio of SAR at M2 to SAR at M1 = 57.8%

Maximum value of SAR (measured) = 13.8 W/kg



0 dB = 13.8 W/kg = 11.41 dBW/kg

Test Laboratory: BTL

Date: 2022/10/19

System Check_H1800

Frequency: 1800 MHz; Duty Cycle: 1:1; Room Ambient Temperature: 23.0°C; Liquid Temperature: 22.0°C

Medium parameters used: $f = 1800$ MHz; $\sigma = 1.375$ S/m; $\epsilon_r = 41.088$; $\rho = 1000$ kg/m³

DASY5 Configuration:

- Area Scan Setting: Find Secondary Maximum Within: 2.0 dB and with a peak SAR value greater than 0.0012W/kg
- Electronics: DAE4 Sn1289; Calibrated: 2022/5/31
- Probe: EX3DV4 - SN7678; ConvF(8.63, 8.63, 8.63) @ 1800 MHz; Calibrated: 2022/8/30
- Sensor-Surface: 2mm (Mechanical Surface Detection (Locations From Previous Scan Used)), Sensor-Surface: 2mm (Mechanical Surface Detection)
- Phantom: Twin-SAM V5.0 (30deg probe tilt); Type: QD 000 P40 CD; Serial: 1897

Configuration/Pin=250mW/Area Scan (7x7x1):

Measurement grid: dx=15mm, dy=15mm

Maximum value of SAR (measured) = 14.7 W/kg

Configuration/Pin=250mW/Zoom Scan (5x5x7)/Cube 0:

Measurement grid: dx=8mm, dy=8mm, dz=5mm

Reference Value = 105.4 V/m; Power Drift = 0.00 dB

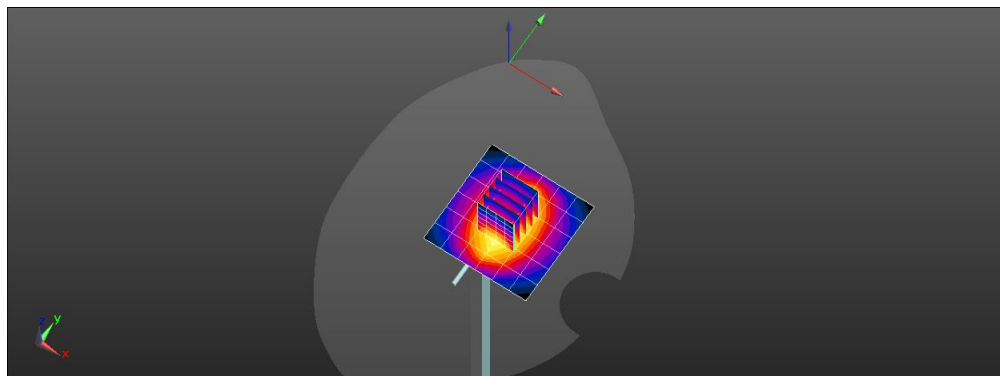
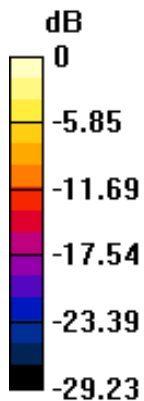
Peak SAR (extrapolated) = 18.3 W/kg

SAR(1 g) = 10.3 W/kg; SAR(10 g) = 5.42 W/kg

Smallest distance from peaks to all points 3 dB below = 10.1 mm

Ratio of SAR at M2 to SAR at M1 = 55.8%

Maximum value of SAR (measured) = 14.6 W/kg



0 dB = 14.7 W/kg = 11.67 dBW/kg

Test Laboratory: BTL

Date: 2022/10/14

System Check_H1800

Frequency: 1800 MHz; Duty Cycle: 1:1; Room Ambient Temperature: 23.0°C; Liquid Temperature: 22.0°C

Medium parameters used: $f = 1800 \text{ MHz}$; $\sigma = 1.368 \text{ S/m}$; $\epsilon_r = 40.972$; $\rho = 1000 \text{ kg/m}^3$

DASY5 Configuration:

- Area Scan Setting: Find Secondary Maximum Within: 2.0 dB and with a peak SAR value greater than 0.0012W/kg
- Electronics: DAE4 Sn1486; Calibrated: 2022/5/31
- Probe: EX3DV4 - SN7369; ConvF(8.67, 8.67, 8.67) @ 1800 MHz; Calibrated: 2022/5/28
- Sensor-Surface: 2mm (Mechanical Surface Detection)
- Phantom: SAM Twin Phantom V5.0; Type: QD 000 P40 C; Serial:1661

Configuration/Pin=250mW/Area Scan (7x7x1):

Measurement grid: $dx=15\text{mm}$, $dy=15\text{mm}$

Maximum value of SAR (measured) = 13.5 W/kg

Configuration/Pin=250mW/Zoom Scan (5x5x7)/Cube 0:

Measurement grid: $dx=8\text{mm}$, $dy=8\text{mm}$, $dz=5\text{mm}$

Reference Value = 100.8 V/m; Power Drift = 0.01 dB

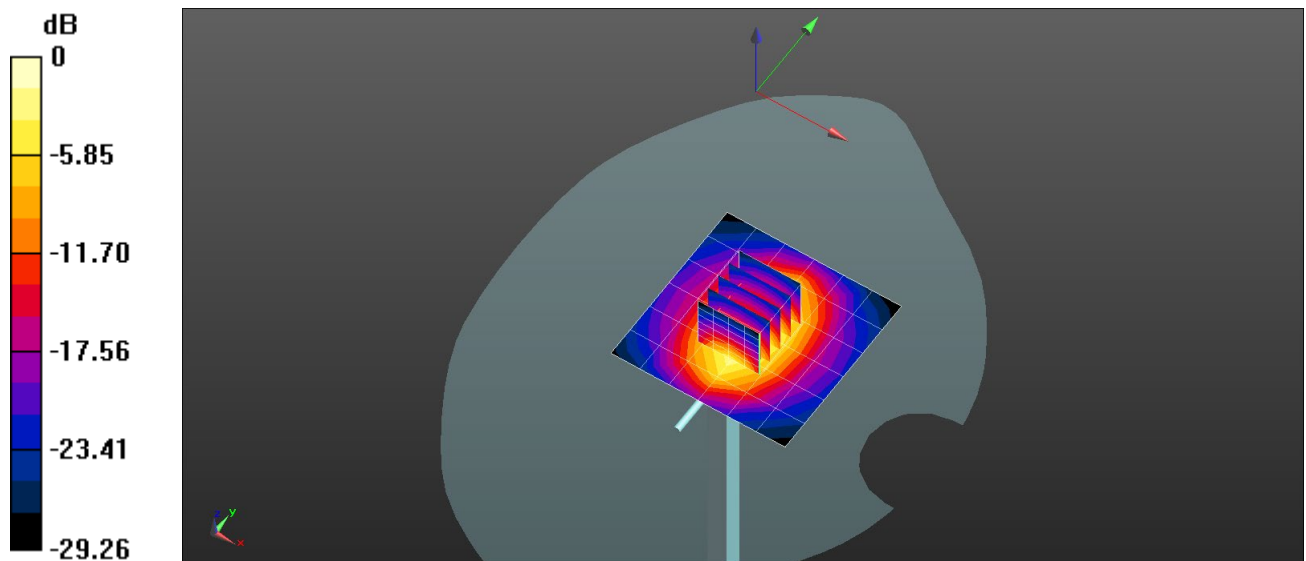
Peak SAR (extrapolated) = 16.7 W/kg

SAR(1 g) = 9.64 W/kg; SAR(10 g) = 5.2 W/kg

Smallest distance from peaks to all points 3 dB below = 10.7 mm

Ratio of SAR at M2 to SAR at M1 = 57.8%

Maximum value of SAR (measured) = 13.4 W/kg



0 dB = 13.5 W/kg = 11.29 dBW/kg

Test Laboratory: BTL

Date: 2022/10/22

System Check_H1800

Frequency: 1800 MHz; Duty Cycle: 1:1; Room Ambient Temperature: 23.0°C; Liquid Temperature: 22.0°C

Medium parameters used: $f = 1800 \text{ MHz}$; $\sigma = 1.378 \text{ S/m}$; $\epsilon_r = 41.521$; $\rho = 1000 \text{ kg/m}^3$

DASY5 Configuration:

- Area Scan Setting: Find Secondary Maximum Within: 2.0 dB and with a peak SAR value greater than 0.0012W/kg
- Electronics: DAE4 Sn1289; Calibrated: 2022/5/31
- Probe: EX3DV4 - SN7678; ConvF(8.63, 8.63, 8.63) @ 1800 MHz; Calibrated: 2022/8/30
- Sensor-Surface: 2mm (Mechanical Surface Detection (Locations From Previous Scan Used)), Sensor-Surface: 2mm (Mechanical Surface Detection)
- Phantom: Twin-SAM V5.0 (30deg probe tilt); Type: QD 000 P40 CD; Serial: 1897

Configuration/Pin=250mW/Area Scan (7x7x1):

Measurement grid: $dx=15\text{mm}$, $dy=15\text{mm}$

Maximum value of SAR (measured) = 14.7 W/kg

Configuration/Pin=250mW/Zoom Scan (5x5x7)/Cube 0:

Measurement grid: $dx=8\text{mm}$, $dy=8\text{mm}$, $dz=5\text{mm}$

Reference Value = 105.4 V/m; Power Drift = 0.00 dB

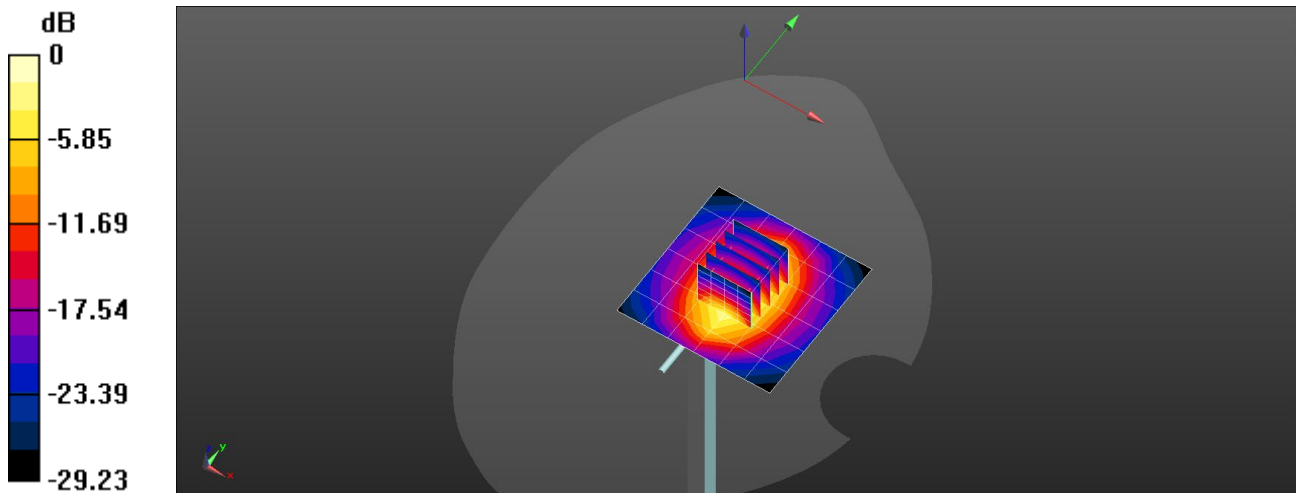
Peak SAR (extrapolated) = 18.4 W/kg

SAR(1 g) = 10.3 W/kg; SAR(10 g) = 5.44 W/kg

Smallest distance from peaks to all points 3 dB below = 10.1 mm

Ratio of SAR at M2 to SAR at M1 = 55.8%

Maximum value of SAR (measured) = 14.6 W/kg



0 dB = 14.7 W/kg = 11.68 dBW/kg

Test Laboratory: BTL

Date: 2022/10/25

System Check_H1800

Frequency: 1800 MHz; Duty Cycle: 1:1; Room Ambient Temperature: 23.0°C; Liquid Temperature: 22.0°C

Medium parameters used: $f = 1800 \text{ MHz}$; $\sigma = 1.358 \text{ S/m}$; $\epsilon_r = 40.153$; $\rho = 1000 \text{ kg/m}^3$

DASY5 Configuration:

- Area Scan Setting: Find Secondary Maximum Within: 2.0 dB and with a peak SAR value greater than 0.0012W/kg
- Electronics: DAE4 Sn1289; Calibrated: 2022/5/31
- Probe: EX3DV4 - SN7678; ConvF(8.63, 8.63, 8.63) @ 1800 MHz; Calibrated: 2022/8/30
- Sensor-Surface: 2mm (Mechanical Surface Detection (Locations From Previous Scan Used)), Sensor-Surface: 2mm (Mechanical Surface Detection)
- Phantom: Twin-SAM V5.0 (30deg probe tilt); Type: QD 000 P40 CD; Serial: 1897

Configuration/Pin=250mW/Area Scan (7x7x1):

Measurement grid: $dx=15\text{mm}$, $dy=15\text{mm}$

Maximum value of SAR (measured) = 14.5 W/kg

Configuration/Pin=250mW/Zoom Scan (5x5x7)/Cube 0:

Measurement grid: $dx=8\text{mm}$, $dy=8\text{mm}$, $dz=5\text{mm}$

Reference Value = 105.4 V/m; Power Drift = 0.00 dB

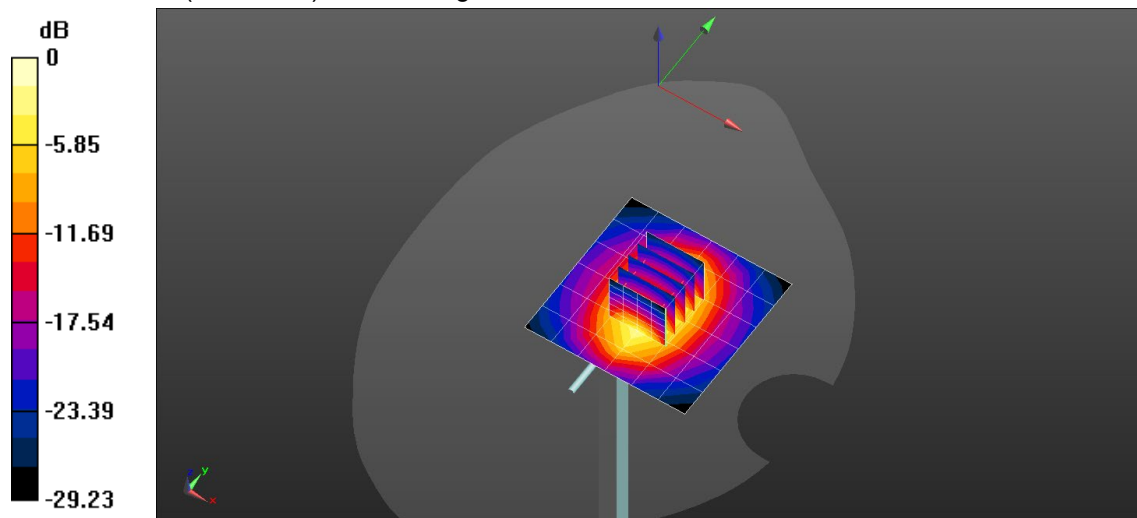
Peak SAR (extrapolated) = 18.1 W/kg

SAR(1 g) = 10.2 W/kg; SAR(10 g) = 5.36 W/kg

Smallest distance from peaks to all points 3 dB below = 10.1 mm

Ratio of SAR at M2 to SAR at M1 = 55.8%

Maximum value of SAR (measured) = 14.4 W/kg



0 dB = 14.5 W/kg = 11.62 dBW/kg

Test Laboratory: BTL

Date: 2021/10/21

System Check_H1800

Frequency: 1800 MHz; Duty Cycle: 1:1; Room Ambient Temperature: 23.0°C; Liquid Temperature: 22.0°C

Medium parameters used: $f = 1800$ MHz; $\sigma = 1.402$ S/m; $\epsilon_r = 39.734$; $\rho = 1000$ kg/m³

DASY5 Configuration:

- Area Scan Setting: Find Secondary Maximum Within: 2.0 dB and with a peak SAR value greater than 0.0012W/kg
- Electronics: DAE4 Sn1486; Calibrated: 2022/5/31
- Probe: EX3DV4 - SN7369; ConvF(8.67, 8.67, 8.67) @ 1800 MHz; Calibrated: 2022/5/28
- Sensor-Surface: 2mm (Mechanical Surface Detection)
- Phantom: SAM Twin Phantom V5.0; Type: QD 000 P40 C; Serial: TP-1897

Configuration/Pin=250mW/Area Scan (7x7x1):

Measurement grid: dx=15mm, dy=15mm

Maximum value of SAR (measured) = 12.6 W/kg

Configuration/Pin=250mW/Zoom Scan (5x5x7)/Cube 0:

Measurement grid: dx=8mm, dy=8mm, dz=5mm

Reference Value = 96.57 V/m; Power Drift = 0.01 dB

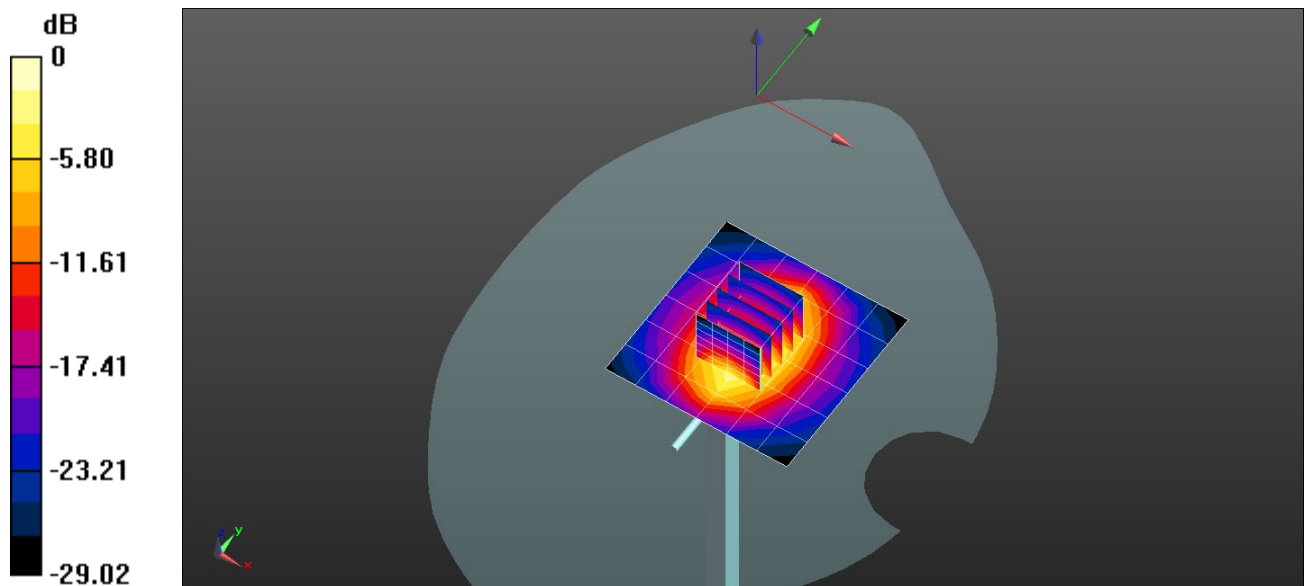
Peak SAR (extrapolated) = 15.7 W/kg

SAR(1 g) = 9.02 W/kg; SAR(10 g) = 4.87 W/kg

Smallest distance from peaks to all points 3 dB below = 10.7 mm

Ratio of SAR at M2 to SAR at M1 = 57.7%

Maximum value of SAR (measured) = 12.6 W/kg



0 dB = 12.6 W/kg = 11.01 dBW/kg

Test Laboratory: BTL

Date: 2022/10/24

System Check_H1800

Frequency: 1800 MHz; Duty Cycle: 1:1; Room Ambient Temperature: 23.0°C; Liquid Temperature: 22.0°C

Medium parameters used: $f = 1800 \text{ MHz}$; $\sigma = 1.377 \text{ S/m}$; $\epsilon_r = 41.42$; $\rho = 1000 \text{ kg/m}^3$

DASY5 Configuration:

- Area Scan Setting: Find Secondary Maximum Within: 2.0 dB and with a peak SAR value greater than 0.0012W/kg
- Electronics: DAE4 Sn1486; Calibrated: 2022/5/31
- Probe: EX3DV4 - SN7369; ConvF(8.67, 8.67, 8.67) @ 1800 MHz; Calibrated: 2022/5/28
- Sensor-Surface: 2mm (Mechanical Surface Detection)
- Phantom: SAM Twin Phantom V5.0; Type: QD 000 P40 C; Serial: TP-1897

Configuration/Pin=250mW/Area Scan (7x7x1):

Measurement grid: $dx=15\text{mm}$, $dy=15\text{mm}$

Maximum value of SAR (measured) = 13.6 W/kg

Configuration/Pin=250mW/Zoom Scan (5x5x7)/Cube 0:

Measurement grid: $dx=8\text{mm}$, $dy=8\text{mm}$, $dz=5\text{mm}$

Reference Value = 100.8 V/m; Power Drift = 0.01 dB

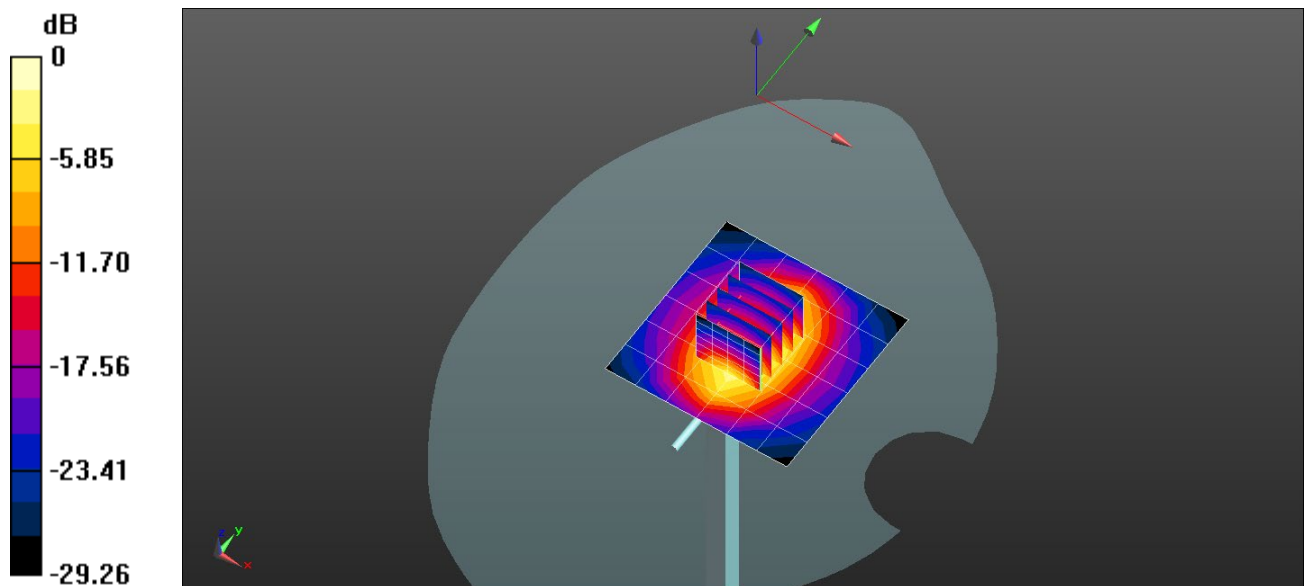
Peak SAR (extrapolated) = 16.9 W/kg

SAR(1 g) = 9.7 W/kg; SAR(10 g) = 5.24 W/kg

Smallest distance from peaks to all points 3 dB below = 10.7 mm

Ratio of SAR at M2 to SAR at M1 = 57.8%

Maximum value of SAR (measured) = 13.5 W/kg



0 dB = 13.6 W/kg = 11.32 dBW/kg

Test Laboratory: BTL

Date: 2022/10/13

System Check_H1900

Frequency: 1900 MHz; Duty Cycle: 1:1; Room Ambient Temperature: 23.0°C; Liquid Temperature: 22.0°C
Medium parameters used: $f = 1900$ MHz; $\sigma = 1.417$ S/m; $\epsilon_r = 40.571$; $\rho = 1000$ kg/m³

DASY5 Configuration:

- Area Scan Setting: Find Secondary Maximum Within: 2.0 dB and with a peak SAR value greater than 0.0012W/kg
- Electronics: DAE4 Sn1486; Calibrated: 2022/5/31
- Probe: EX3DV4 - SN7369; ConvF(8.3, 8.3, 8.3) @ 1900 MHz; Calibrated: 2022/5/28
- Sensor-Surface: 1.4mm (Mechanical Surface Detection)
- Phantom: SAM Twin Phantom V5.0; Type: QD 000 P40 C; Serial:1661

Configuration/Pin=250mW/Area Scan (7x7x1):

Measurement grid: dx=15mm, dy=15mm

Maximum value of SAR (measured) = 15.3 W/kg

Configuration/Pin=250mW/Zoom Scan (5x5x7)/Cube 0:

Measurement grid: dx=8mm, dy=8mm, dz=5mm

Reference Value = 101.9 V/m; Power Drift = 0.02 dB

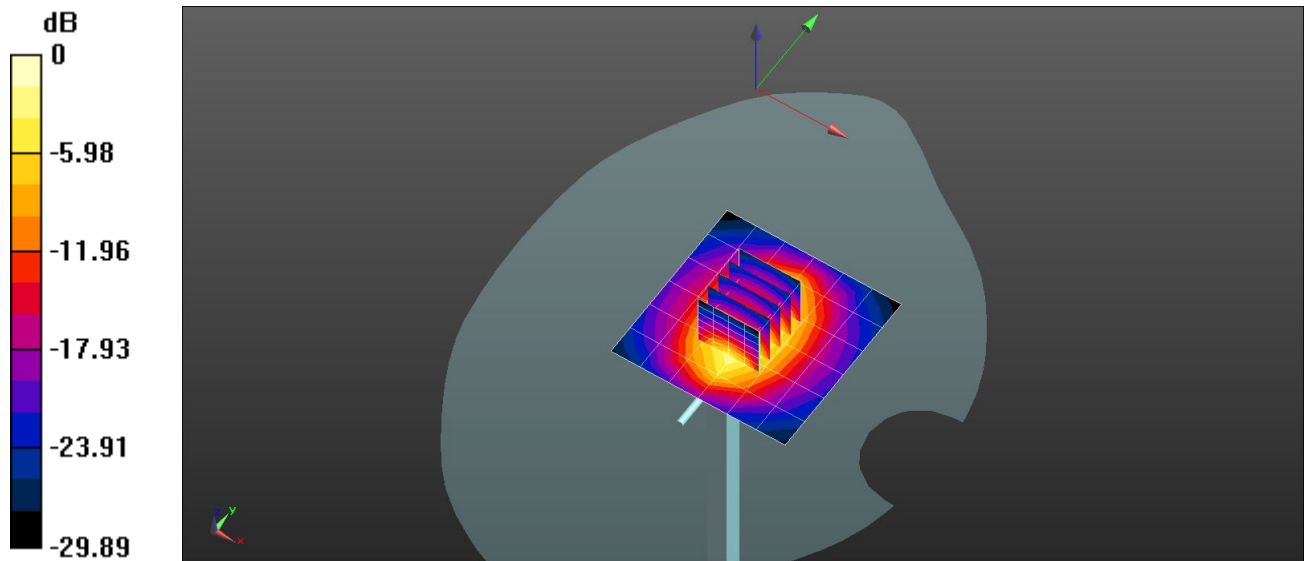
Peak SAR (extrapolated) = 18.6 W/kg

SAR(1 g) = 10.3 W/kg; SAR(10 g) = 5.47 W/kg

Smallest distance from peaks to all points 3 dB below = 10.1 mm

Ratio of SAR at M2 to SAR at M1 = 55.7%

Maximum value of SAR (measured) = 15.8 W/kg



0 dB = 15.3 W/kg = 11.86 dBW/kg

Test Laboratory: BTL

Date: 2022/10/20

System Check_H1900

Frequency: 1900 MHz; Duty Cycle: 1:1; Room Ambient Temperature: 23.0°C; Liquid Temperature: 22.0°C

Medium parameters used: $f = 1900$ MHz; $\sigma = 1.462$ S/m; $\epsilon_r = 39.787$; $\rho = 1000$ kg/m³

DASY5 Configuration:

- Area Scan Setting: Find Secondary Maximum Within: 2.0 dB and with a peak SAR value greater than 0.0012W/kg
- Electronics: DAE4 Sn1486; Calibrated: 2022/5/31
- Probe: EX3DV4 - SN7369; ConvF(8.3, 8.3, 8.3) @ 1900 MHz; Calibrated: 2022/5/28
- Sensor-Surface: 1.4mm (Mechanical Surface Detection)
- Phantom: SAM Twin Phantom V5.0; Type: QD 000 P40 C; Serial: TP-1897

Configuration/Pin=250mW/Area Scan (7x7x1):

Measurement grid: dx=15mm, dy=15mm

Maximum value of SAR (measured) = 15.8 W/kg

Configuration/Pin=250mW/Zoom Scan (5x5x7)/Cube 0:

Measurement grid: dx=8mm, dy=8mm, dz=5mm

Reference Value = 101.9 V/m; Power Drift = 0.02 dB

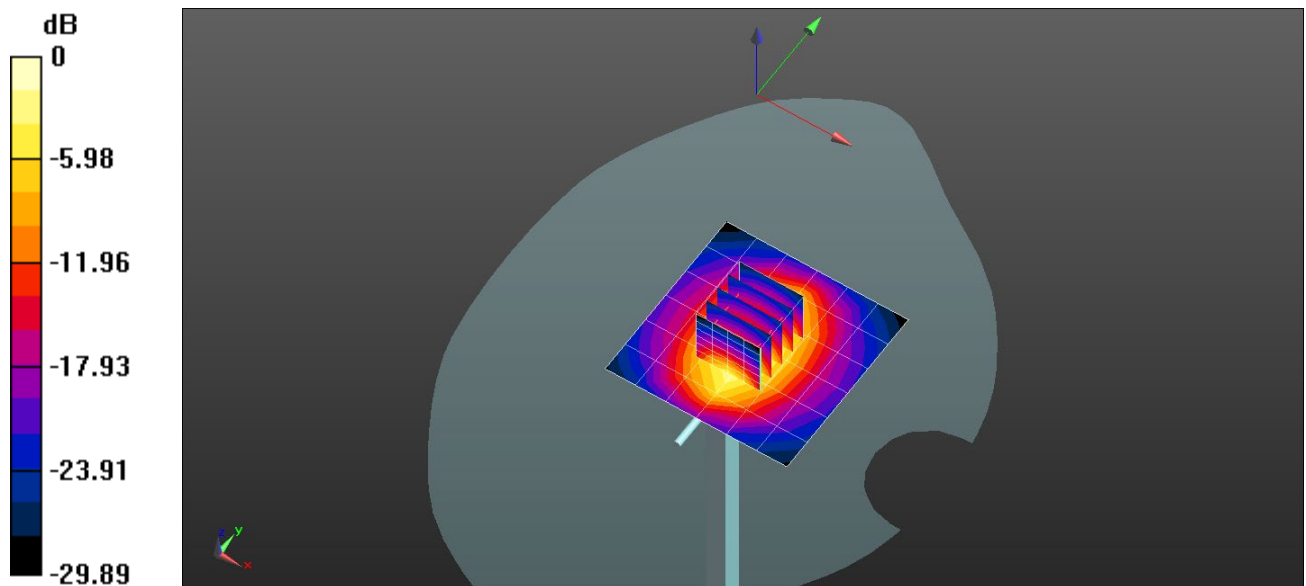
Peak SAR (extrapolated) = 19.1 W/kg

SAR(1 g) = 10.7 W/kg; SAR(10 g) = 5.65 W/kg

Smallest distance from peaks to all points 3 dB below = 10.1 mm

Ratio of SAR at M2 to SAR at M1 = 55.7%

Maximum value of SAR (measured) = 16.3 W/kg



0 dB = 15.8 W/kg = 12.00 dBW/kg

Test Laboratory: BTL

Date: 2022/10/24

System Check_H1900

Frequency: 1900 MHz; Duty Cycle: 1:1; Room Ambient Temperature: 23.0°C; Liquid Temperature: 22.0°C

Medium parameters used: $f = 1900$ MHz; $\sigma = 1.403$ S/m; $\epsilon_r = 40.674$; $\rho = 1000$ kg/m³

DASY5 Configuration:

- Area Scan Setting: Find Secondary Maximum Within: 2.0 dB and with a peak SAR value greater than 0.0012W/kg
- Electronics: DAE4 Sn1486; Calibrated: 2022/5/31
- Probe: EX3DV4 - SN7369; ConvF(8.3, 8.3, 8.3) @ 1900 MHz; Calibrated: 2022/5/28
- Sensor-Surface: 1.4mm (Mechanical Surface Detection)
- Phantom: SAM Twin Phantom V5.0; Type: QD 000 P40 C; Serial: TP-1897

Configuration/Pin=250mW/Area Scan (7x7x1):

Measurement grid: dx=15mm, dy=15mm

Maximum value of SAR (measured) = 14.9 W/kg

Configuration/Pin=250mW/Zoom Scan (5x5x7)/Cube 0:

Measurement grid: dx=8mm, dy=8mm, dz=5mm

Reference Value = 100.7 V/m; Power Drift = 0.01 dB

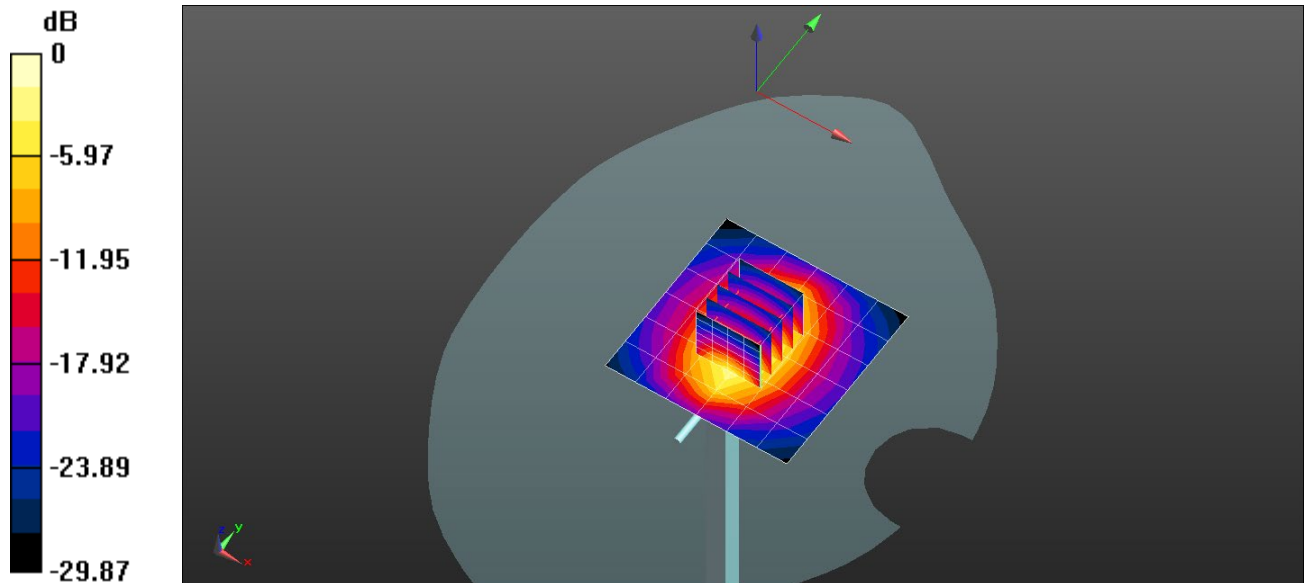
Peak SAR (extrapolated) = 18.0 W/kg

SAR(1 g) = 10 W/kg; SAR(10 g) = 5.3 W/kg

Smallest distance from peaks to all points 3 dB below = 10.1 mm

Ratio of SAR at M2 to SAR at M1 = 55.5%

Maximum value of SAR (measured) = 15.3 W/kg



0 dB = 14.9 W/kg = 11.72 dBW/kg

Test Laboratory: BTL

Date: 2022/10/25

System Check_H2600

Frequency: 2600 MHz; Duty Cycle: 1:1; Room Ambient Temperature: 23.0°C; Liquid Temperature: 22.0°C

Medium parameters used: $f = 2600$ MHz; $\sigma = 1.956$ S/m; $\epsilon_r = 39.519$; $\rho = 1000$ kg/m³

DASY5 Configuration:

- Area Scan Setting: Find Secondary Maximum Within: 2.0 dB and with a peak SAR value greater than 0.0012W/kg
- Electronics: DAE4 Sn1486; Calibrated: 2022/5/31
- Probe: EX3DV4 - SN7369; ConvF(7.49, 7.49, 7.49) @ 2600 MHz; Calibrated: 2022/5/28
- Sensor-Surface: 2mm (Mechanical Surface Detection)
- Phantom: SAM Twin Phantom V5.0; Type: QD 000 P40 C; Serial: TP-1897

System Performance Check at Frequencies above 1 GHz/Pin=250mW/Area Scan (9x9x1):

Measurement grid: dx=12mm, dy=12mm

Maximum value of SAR (measured) = 21.2 W/kg

System Performance Check at Frequencies above 1 GHz/Pin=250mW/Zoom Scan (7x7x7)/Cube 0:

Measurement grid: dx=5mm, dy=5mm, dz=5mm

Reference Value = 106.4 V/m; Power Drift = 0.00 dB

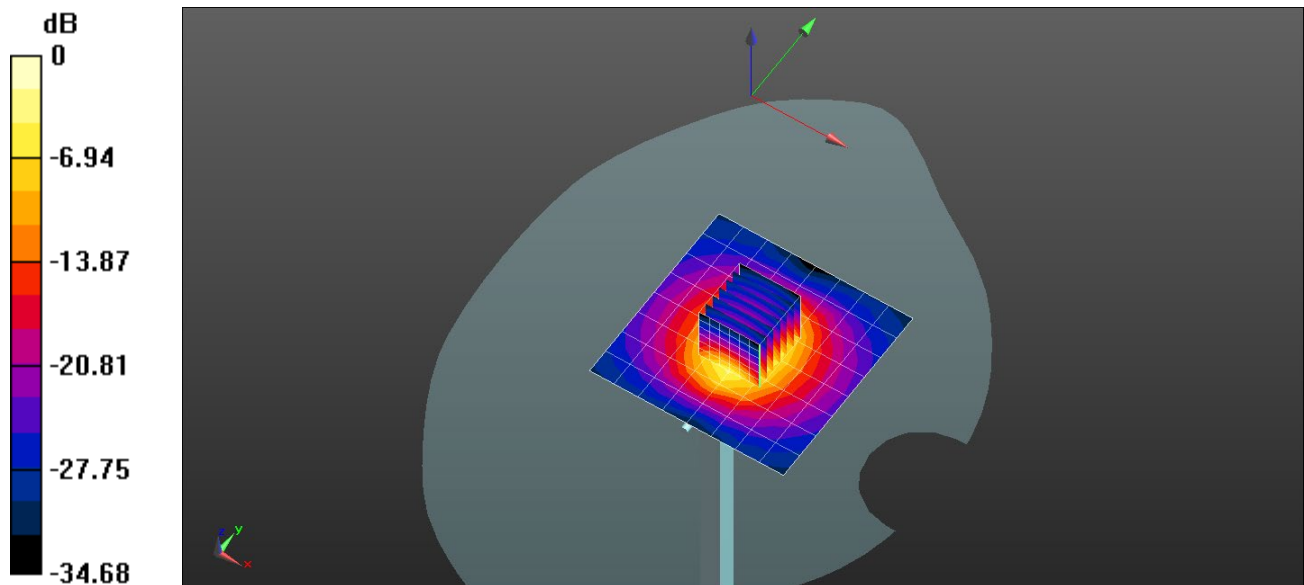
Peak SAR (extrapolated) = 29.7 W/kg

SAR(1 g) = 13.3 W/kg; SAR(10 g) = 5.79 W/kg

Smallest distance from peaks to all points 3 dB below = 9 mm

Ratio of SAR at M2 to SAR at M1 = 44.4%

Maximum value of SAR (measured) = 21.2 W/kg



0 dB = 21.2 W/kg = 13.26 dBW/kg

Test Laboratory: BTL

Date: 2022/10/22

System Check_H2600

Frequency: 2600 MHz; Duty Cycle: 1:1; Room Ambient Temperature: 23.0°C; Liquid Temperature: 22.0°C

Medium parameters used: $f = 2600$ MHz; $\sigma = 1.895$ S/m; $\epsilon_r = 38.364$; $\rho = 1000$ kg/m³

DASY5 Configuration:

- Area Scan Setting: Find Secondary Maximum Within: 2.0 dB and with a peak SAR value greater than 0.0012W/kg
- Electronics: DAE4 Sn1486; Calibrated: 2022/5/31
- Probe: EX3DV4 - SN7369; ConvF(7.49, 7.49, 7.49) @ 2600 MHz; Calibrated: 2022/5/28
- Sensor-Surface: 2mm (Mechanical Surface Detection)
- Phantom: SAM Twin Phantom V5.0; Type: QD 000 P40 C; Serial: TP-1897

System Performance Check at Frequencies above 1 GHz/Pin=250mW/Area Scan (9x9x1):

Measurement grid: dx=12mm, dy=12mm

Maximum value of SAR (measured) = 20.5 W/kg

System Performance Check at Frequencies above 1 GHz/Pin=250mW/Zoom Scan (7x7x7)/Cube 0:

Measurement grid: dx=5mm, dy=5mm, dz=5mm

Reference Value = 106.4 V/m; Power Drift = 0.00 dB

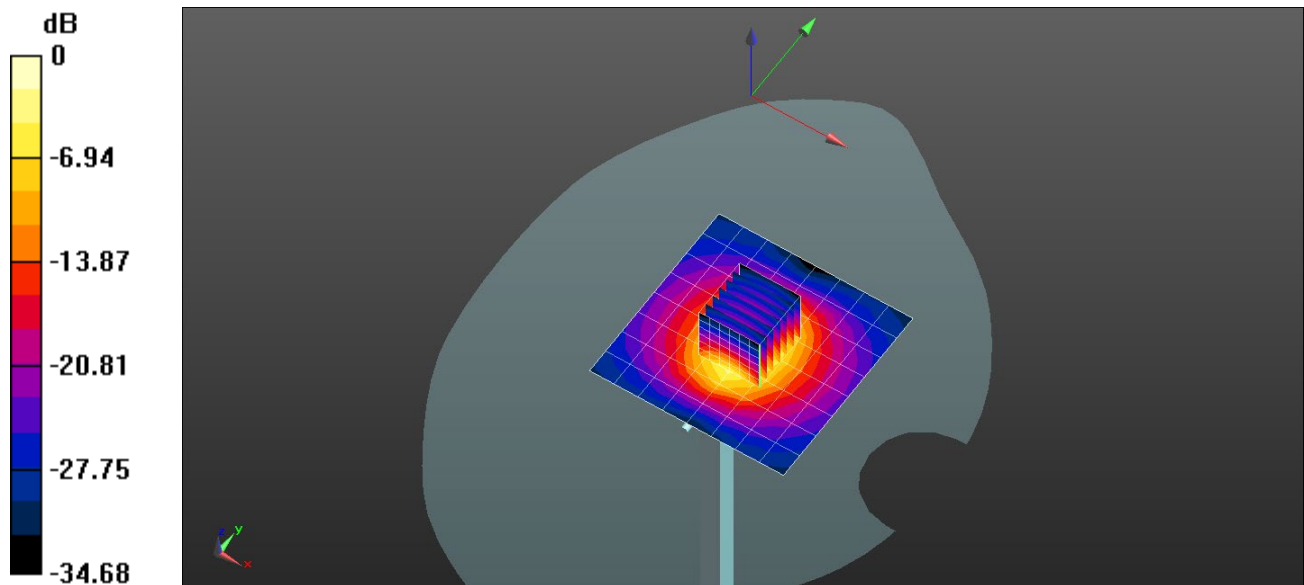
Peak SAR (extrapolated) = 28.8 W/kg

SAR(1 g) = 12.9 W/kg; SAR(10 g) = 5.61 W/kg

Smallest distance from peaks to all points 3 dB below = 9 mm

Ratio of SAR at M2 to SAR at M1 = 44.4%

Maximum value of SAR (measured) = 20.6 W/kg



0 dB = 20.5 W/kg = 13.12 dBW/kg

Test Laboratory: BTL

Date: 2022/10/20

System Check_H2600

Frequency: 2600 MHz; Duty Cycle: 1:1; Room Ambient Temperature: 23.0°C; Liquid Temperature: 22.0°C
Medium parameters used: $f = 2600$ MHz; $\sigma = 1.975$ S/m; $\epsilon_r = 39.567$; $\rho = 1000$ kg/m³

DASY5 Configuration:

- Area Scan Setting: Find Secondary Maximum Within: 2.0 dB and with a peak SAR value greater than 0.0012W/kg
- Electronics: DAE4 Sn1486; Calibrated: 2022/5/31
- Probe: EX3DV4 - SN7369; ConvF(7.49, 7.49, 7.49) @ 2600 MHz; Calibrated: 2022/5/28
- Sensor-Surface: 2mm (Mechanical Surface Detection)
- Phantom: SAM Twin Phantom V5.0; Type: QD 000 P40 C; Serial: TP-1897

System Performance Check at Frequencies above 1 GHz/Pin=250mW/Area Scan (9x9x1):

Measurement grid: dx=12mm, dy=12mm

Maximum value of SAR (measured) = 21.4 W/kg

System Performance Check at Frequencies above 1 GHz/Pin=250mW/Zoom Scan (7x7x7)/Cube 0:

Measurement grid: dx=5mm, dy=5mm, dz=5mm

Reference Value = 106.4 V/m; Power Drift = 0.00 dB

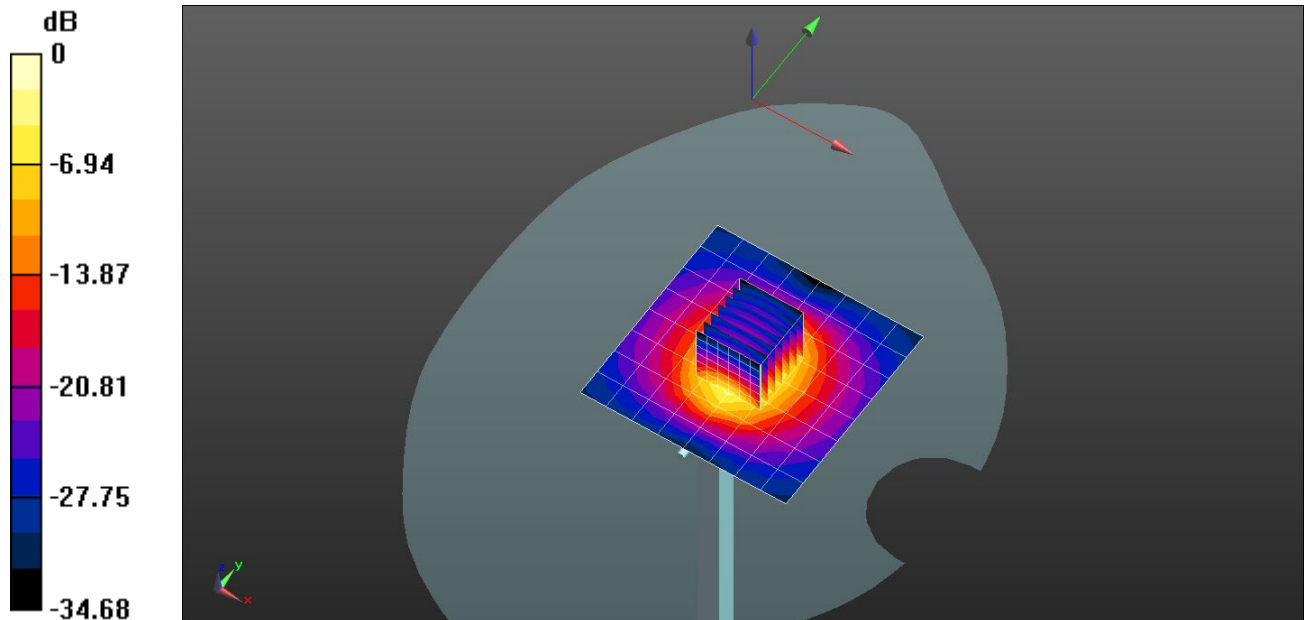
Peak SAR (extrapolated) = 30.0 W/kg

SAR(1 g) = 13.4 W/kg; SAR(10 g) = 5.85 W/kg

Smallest distance from peaks to all points 3 dB below = 9 mm

Ratio of SAR at M2 to SAR at M1 = 44.4%

Maximum value of SAR (measured) = 21.5 W/kg



0 dB = 21.4 W/kg = 13.30 dBW/kg

Test Laboratory: BTL

Date: 2022/10/19

System Check_H2600

Frequency: 2600 MHz; Duty Cycle: 1:1; Room Ambient Temperature: 23.0°C; Liquid Temperature: 22.0°C

Medium parameters used: $f = 2600$ MHz; $\sigma = 1.946$ S/m; $\epsilon_r = 38.514$; $\rho = 1000$ kg/m³

DASY5 Configuration:

- Area Scan Setting: Find Secondary Maximum Within: 2.0 dB and with a peak SAR value greater than 0.0012W/kg
- Electronics: DAE4 Sn1486; Calibrated: 2022/5/31
- Probe: EX3DV4 - SN7369; ConvF(7.49, 7.49, 7.49) @ 2600 MHz; Calibrated: 2022/5/28
- Sensor-Surface: 2mm (Mechanical Surface Detection)
- Phantom: SAM Twin Phantom V5.0; Type: QD 000 P40 C; Serial: TP-1897

System Performance Check at Frequencies above 1 GHz/Pin=250mW /Area Scan (9x9x1):

Measurement grid: dx=12mm, dy=12mm

Maximum value of SAR (measured) = 21.1 W/kg

System Performance Check at Frequencies above 1 GHz/Pin=250mW /Zoom Scan (7x7x7)/Cube 0:

Measurement grid: dx=5mm, dy=5mm, dz=5mm

Reference Value = 106.4 V/m; Power Drift = 0.00 dB

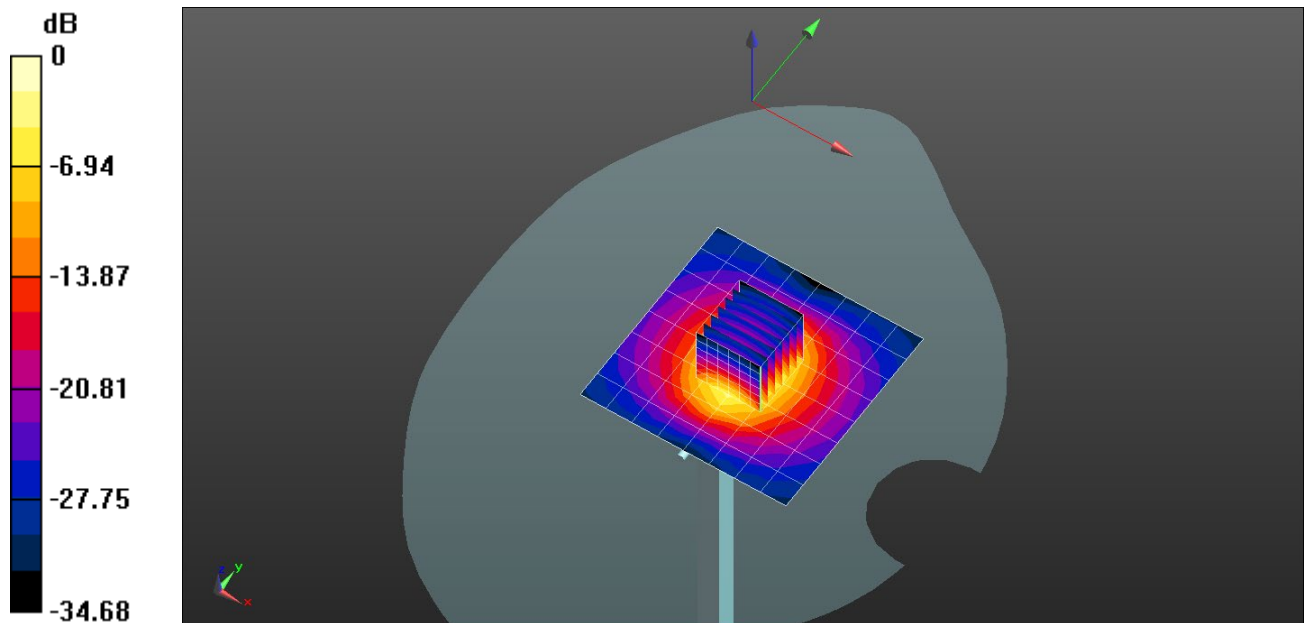
Peak SAR (extrapolated) = 29.6 W/kg

SAR(1 g) = 13.2 W/kg; SAR(10 g) = 5.76 W/kg

Smallest distance from peaks to all points 3 dB below = 9 mm

Ratio of SAR at M2 to SAR at M1 = 44.4%

Maximum value of SAR (measured) = 21.1 W/kg



0 dB = 21.1 W/kg = 13.23 dBW/kg

Test Laboratory: BTL

Date: 2022/10/19

System Check_H2600

Frequency: 2600 MHz; Duty Cycle: 1:1; Room Ambient Temperature: 23.0°C; Liquid Temperature: 22.0°C

Medium parameters used: $f = 2600$ MHz; $\sigma = 2.036$ S/m; $\epsilon_r = 38.696$; $\rho = 1000$ kg/m³

DASY5 Configuration:

- Area Scan Setting: Find Secondary Maximum Within: 2.0 dB and with a peak SAR value greater than 0.0012W/kg
- Electronics: DAE4 Sn1289; Calibrated: 2022/5/31
- Probe: EX3DV4 - SN7678; ConvF(8.11, 8.11, 8.11) @ 2600 MHz; Calibrated: 2022/8/30
- Sensor-Surface: 1.4mm (Mechanical Surface Detection)
- Phantom: Twin-SAM V5.0 (30deg probe tilt); Type: QD 000 P40 CD; Serial: 1897

System Performance Check at Frequencies above 1 GHz/Pin=250mW/Area Scan (9x9x1):

Measurement grid: dx=12mm, dy=12mm

Maximum value of SAR (measured) = 23.2 W/kg

System Performance Check at Frequencies above 1 GHz/Pin=250mW/Zoom Scan (7x7x7)/Cube 0:

Measurement grid: dx=5mm, dy=5mm, dz=5mm

Reference Value = 110.8 V/m; Power Drift = -0.02 dB

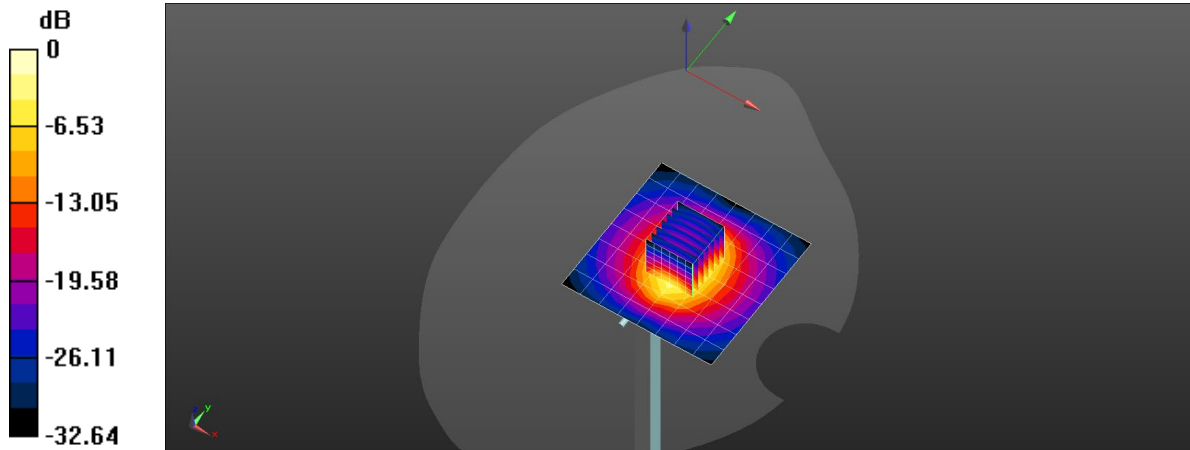
Peak SAR (extrapolated) = 28.8 W/kg

SAR(1 g) = 13.6 W/kg; SAR(10 g) = 6.25 W/kg

Smallest distance from peaks to all points 3 dB below = 9 mm

Ratio of SAR at M2 to SAR at M1 = 46.9%

Maximum value of SAR (measured) = 23.1 W/kg



0 dB = 23.2 W/kg = 13.66 dBW/kg

Test Laboratory: BTL

Date: 2022/10/18

System Check_H2600

Frequency: 2600 MHz; Duty Cycle: 1:1; Room Ambient Temperature: 23.0°C; Liquid Temperature: 22.0°C

Medium parameters used: $f = 2600$ MHz; $\sigma = 2.026$ S/m; $\epsilon_r = 38.584$; $\rho = 1000$ kg/m³

DASY5 Configuration:

- Area Scan Setting: Find Secondary Maximum Within: 2.0 dB and with a peak SAR value greater than 0.0012W/kg
- Electronics: DAE4 Sn1486; Calibrated: 2022/5/31
- Probe: EX3DV4 - SN7369; ConvF(7.49, 7.49, 7.49) @ 2600 MHz; Calibrated: 2022/5/28
- Sensor-Surface: 2mm (Mechanical Surface Detection)
- Phantom: SAM Twin Phantom V5.0; Type: QD 000 P40 C; Serial: 1661

System Performance Check at Frequencies above 1 GHz/Pin=250mW 2/Area Scan (9x9x1):

Measurement grid: dx=12mm, dy=12mm

Maximum value of SAR (measured) = 21.9 W/kg

System Performance Check at Frequencies above 1 GHz/Pin=250mW 2/Zoom Scan (7x7x7)/Cube 0:

Measurement grid: dx=5mm, dy=5mm, dz=5mm

Reference Value = 106.4 V/m; Power Drift = 0.00 dB

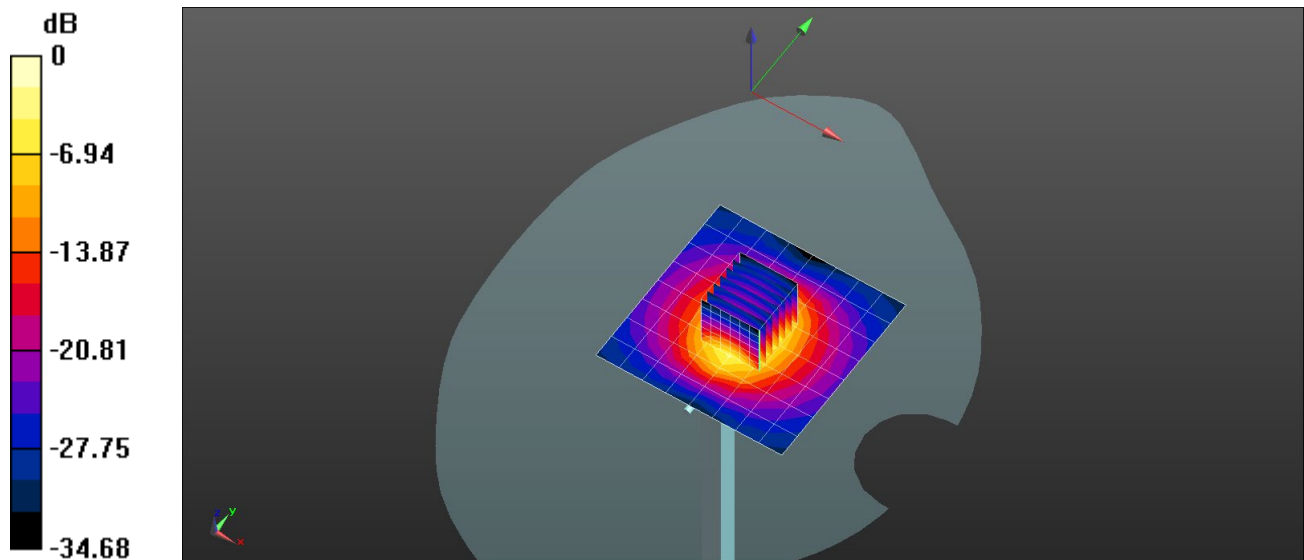
Peak SAR (extrapolated) = 30.8 W/kg

SAR(1 g) = 13.8 W/kg; SAR(10 g) = 6 W/kg

Smallest distance from peaks to all points 3 dB below = 9 mm

Ratio of SAR at M2 to SAR at M1 = 44.4%

Maximum value of SAR (measured) = 22.0 W/kg



0 dB = 21.9 W/kg = 13.41 dBW/kg

Test Laboratory: BTL

Date: 2022/10/17

System Check_H2600

Frequency: 2600 MHz; Duty Cycle: 1:1; Room Ambient Temperature: 23.0°C; Liquid Temperature: 22.0°C

Medium parameters used: $f = 2600$ MHz; $\sigma = 2.015$ S/m; $\epsilon_r = 37.066$; $\rho = 1000$ kg/m³

DASY5 Configuration:

- Area Scan Setting: Find Secondary Maximum Within: 2.0 dB and with a peak SAR value greater than 0.0012W/kg
- Electronics: DAE4 Sn1289; Calibrated: 2022/5/31
- Probe: EX3DV4 - SN7678; ConvF(8.11, 8.11, 8.11) @ 2600 MHz; Calibrated: 2022/8/30
- Sensor-Surface: 1.4mm (Mechanical Surface Detection)
- Phantom: Twin-SAM V5.0 (30deg probe tilt); Type: QD 000 P40 CD; Serial: 1897

System Performance Check at Frequencies above 1 GHz/Pin=250mW /Area Scan (9x9x1):

Measurement grid: dx=12mm, dy=12mm

Maximum value of SAR (measured) = 24.7 W/kg

System Performance Check at Frequencies above 1 GHz/Pin=250mW /Zoom Scan (7x7x7)/Cube 0:

Measurement grid: dx=5mm, dy=5mm, dz=5mm

Reference Value = 115.3 V/m; Power Drift = -0.02 dB

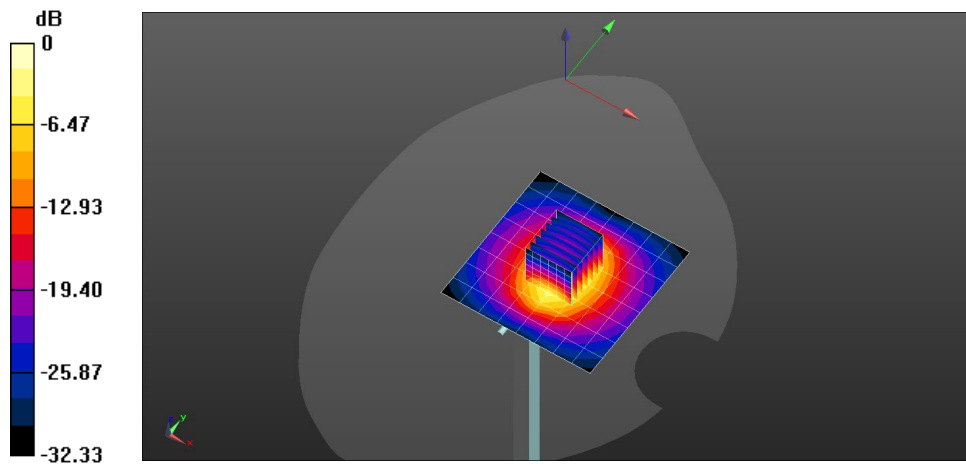
Peak SAR (extrapolated) = 30.8 W/kg

SAR(1 g) = 14.5 W/kg; SAR(10 g) = 6.64 W/kg

Smallest distance from peaks to all points 3 dB below = 9 mm

Ratio of SAR at M2 to SAR at M1 = 46.6%

Maximum value of SAR (measured) = 24.7 W/kg



0 dB = 24.7 W/kg = 13.93 dBW/kg

Test Laboratory: BTL

Date: 2022/10/15

System Check_H2600

Frequency: 2600 MHz; Duty Cycle: 1:1; Room Ambient Temperature: 23.0°C; Liquid Temperature: 22.0°C

Medium parameters used: $f = 2600$ MHz; $\sigma = 2.017$ S/m; $\epsilon_r = 37.487$; $\rho = 1000$ kg/m³

DASY5 Configuration:

- Area Scan Setting: Find Secondary Maximum Within: 2.0 dB and with a peak SAR value greater than 0.0012W/kg
- Electronics: DAE4 Sn1289; Calibrated: 2022/5/31
- Probe: EX3DV4 - SN7678; ConvF(8.11, 8.11, 8.11) @ 2600 MHz; Calibrated: 2022/8/30
- Sensor-Surface: 1.4mm (Mechanical Surface Detection)
- Phantom: Twin-SAM V5.0 (30deg probe tilt); Type: QD 000 P40 CD; Serial: 1897

System Performance Check at Frequencies above 1 GHz/Pin=250mW/Area Scan (9x9x1):

Measurement grid: dx=12mm, dy=12mm

Maximum value of SAR (measured) = 23.0 W/kg

System Performance Check at Frequencies above 1 GHz/Pin=250mW/Zoom Scan (7x7x7)/Cube 0:

Measurement grid: dx=5mm, dy=5mm, dz=5mm

Reference Value = 110.8 V/m; Power Drift = -0.02 dB

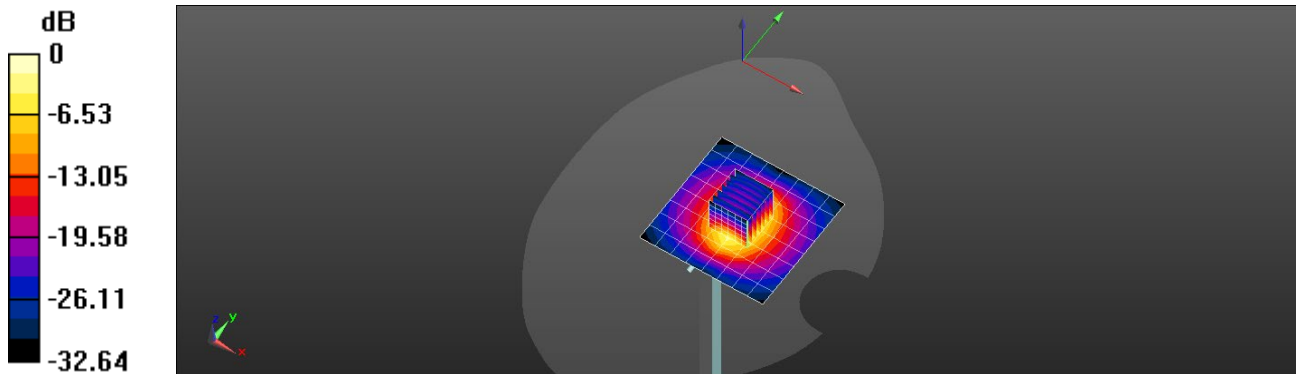
Peak SAR (extrapolated) = 28.5 W/kg

SAR(1 g) = 13.5 W/kg; SAR(10 g) = 6.19 W/kg

Smallest distance from peaks to all points 3 dB below = 9 mm

Ratio of SAR at M2 to SAR at M1 = 46.9%

Maximum value of SAR (measured) = 22.9 W/kg



0 dB = 23.0 W/kg = 13.61 dBW/kg

Test Laboratory: BTL

Date: 2022/10/17

System Check_H2600

Frequency: 2600 MHz; Duty Cycle: 1:1; Room Ambient Temperature: 23.0°C; Liquid Temperature: 22.0°C

Medium parameters used: $f = 2600$ MHz; $\sigma = 1.949$ S/m; $\epsilon_r = 39.395$; $\rho = 1000$ kg/m³

DASY5 Configuration:

- Area Scan Setting: Find Secondary Maximum Within: 2.0 dB and with a peak SAR value greater than 0.0012W/kg
- Electronics: DAE4 Sn1486; Calibrated: 2022/5/31
- Probe: EX3DV4 - SN7369; ConvF(7.49, 7.49, 7.49) @ 2600 MHz; Calibrated: 2022/5/28
- Sensor-Surface: 2mm (Mechanical Surface Detection)
- Phantom: SAM Twin Phantom V5.0; Type: QD 000 P40 C; Serial: TP-1897

System Performance Check at Frequencies above 1 GHz/Pin=250mW/Area Scan (9x9x1):

Measurement grid: dx=12mm, dy=12mm

Maximum value of SAR (measured) = 21.5 W/kg

System Performance Check at Frequencies above 1 GHz/Pin=250mW/Zoom Scan (7x7x7)/Cube 0:

Measurement grid: dx=5mm, dy=5mm, dz=5mm

Reference Value = 107.5 V/m; Power Drift = 0.01 dB

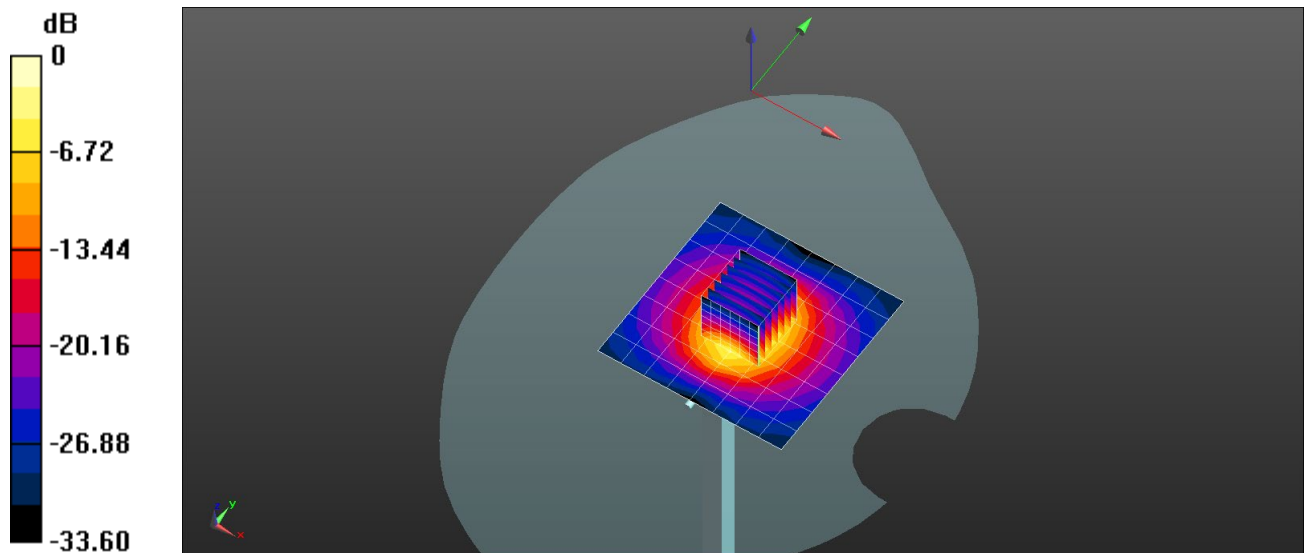
Peak SAR (extrapolated) = 30.2 W/kg

SAR(1 g) = 13.5 W/kg; SAR(10 g) = 5.88 W/kg

Smallest distance from peaks to all points 3 dB below = 9 mm

Ratio of SAR at M2 to SAR at M1 = 44.3%

Maximum value of SAR (measured) = 21.6 W/kg



0 dB = 21.5 W/kg = 13.32 dBW/kg

Test Laboratory: BTL

Date: 2022/10/18

System Check_H2600

Frequency: 2600 MHz; Duty Cycle: 1:1; Room Ambient Temperature: 23.0°C; Liquid Temperature: 22.0°C

Medium parameters used: $f = 2600 \text{ MHz}$; $\sigma = 2.026 \text{ S/m}$; $\epsilon_r = 38.584$; $\rho = 1000 \text{ kg/m}^3$

DASY5 Configuration:

- Area Scan Setting: Find Secondary Maximum Within: 2.0 dB and with a peak SAR value greater than 0.0012W/kg
- Electronics: DAE4 Sn1289; Calibrated: 2022/5/31
- Probe: EX3DV4 - SN7678; ConvF(8.11, 8.11, 8.11) @ 2600 MHz; Calibrated: 2022/8/30
- Sensor-Surface: 1.4mm (Mechanical Surface Detection)
- Phantom: Twin-SAM V5.0 (30deg probe tilt); Type: QD 000 P40 CD; Serial: 1897

System Performance Check at Frequencies above 1 GHz/Pin=250mW /Area Scan (9x9x1):

Measurement grid: $dx=12\text{mm}$, $dy=12\text{mm}$

Maximum value of SAR (measured) = 24.0 W/kg

System Performance Check at Frequencies above 1 GHz/Pin=250mW /Zoom Scan (7x7x7)/Cube 0:

Measurement grid: $dx=5\text{mm}$, $dy=5\text{mm}$, $dz=5\text{mm}$

Reference Value = 113.2 V/m; Power Drift = 0.01 dB

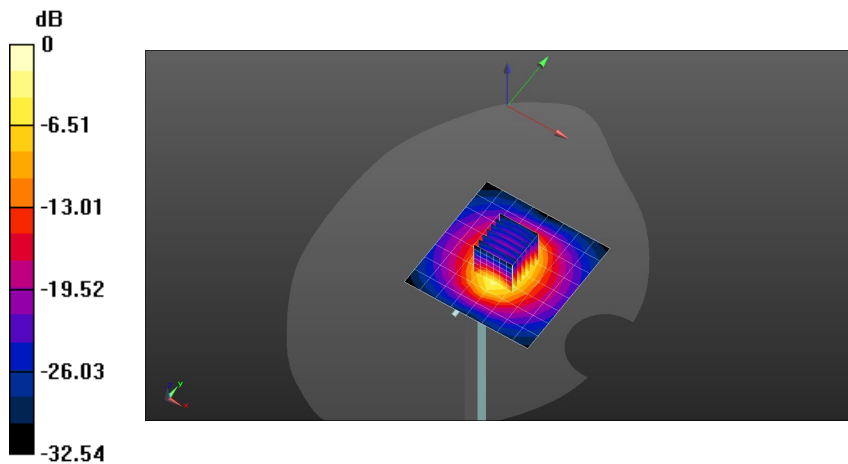
Peak SAR (extrapolated) = 29.8 W/kg

SAR(1 g) = 14 W/kg; SAR(10 g) = 6.41 W/kg

Smallest distance from peaks to all points 3 dB below = 9 mm

Ratio of SAR at M2 to SAR at M1 = 46.6%

Maximum value of SAR (measured) = 23.9 W/kg



0 dB = 24.0 W/kg = 13.80 dBW/kg

Test Laboratory: BTL

Date: 2022/10/24

System Check_H2600

Frequency: 2600 MHz; Duty Cycle: 1:1; Room Ambient Temperature: 23.0°C; Liquid Temperature: 22.0°C

Medium parameters used: $f = 2600$ MHz; $\sigma = 2.034$ S/m; $\epsilon_r = 38.321$; $\rho = 1000$ kg/m³

DASY5 Configuration:

- Area Scan Setting: Find Secondary Maximum Within: 2.0 dB and with a peak SAR value greater than 0.0012W/kg
- Electronics: DAE4 Sn1486; Calibrated: 2022/5/31
- Probe: EX3DV4 - SN7369; ConvF(7.49, 7.49, 7.49) @ 2600 MHz; Calibrated: 2022/5/28
- Sensor-Surface: 2mm (Mechanical Surface Detection)
- Phantom: SAM Twin Phantom V5.0; Type: QD 000 P40 C; Serial:1661

System Performance Check at Frequencies above 1 GHz/Pin=250mW/Area Scan (9x9x1):

Measurement grid: dx=12mm, dy=12mm

Maximum value of SAR (measured) = 23.8 W/kg

System Performance Check at Frequencies above 1 GHz/Pin=250mW/Zoom Scan (7x7x7)/Cube 0:

Measurement grid: dx=5mm, dy=5mm, dz=5mm

Reference Value = 110.5 V/m; Power Drift = -0.01 dB

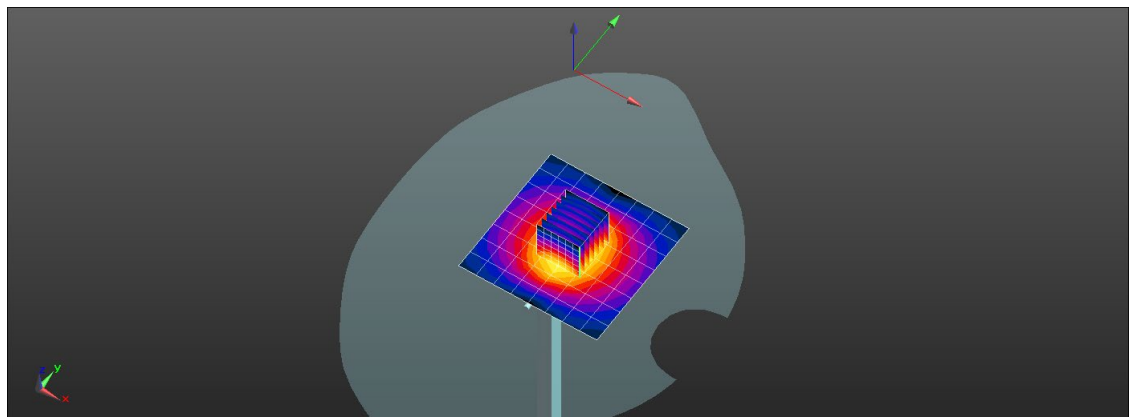
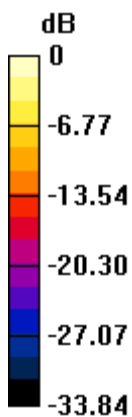
Peak SAR (extrapolated) = 33.5 W/kg

SAR(1 g) = 14.9 W/kg; SAR(10 g) = 6.49 W/kg

Smallest distance from peaks to all points 3 dB below = 9 mm

Ratio of SAR at M2 to SAR at M1 = 44.3%

Maximum value of SAR (measured) = 23.9 W/kg



0 dB = 23.8 W/kg = 13.76 dBW/kg

Test Laboratory: BTL

Date: 2022/10/25

System Check_H2600

Frequency: 2600 MHz; Duty Cycle: 1:1; Room Ambient Temperature: 23.0°C; Liquid Temperature: 22.0°C

Medium parameters used: $f = 2600$ MHz; $\sigma = 2.034$ S/m; $\epsilon_r = 38.325$; $\rho = 1000$ kg/m³

DASY5 Configuration:

- Area Scan Setting: Find Secondary Maximum Within: 2.0 dB and with a peak SAR value greater than 0.0012W/kg
- Electronics: DAE4 Sn1289; Calibrated: 2022/5/31
- Probe: EX3DV4 - SN7678; ConvF(8.11, 8.11, 8.11) @ 2600 MHz; Calibrated: 2022/8/30
- Sensor-Surface: 1.4mm (Mechanical Surface Detection)
- Phantom: Twin-SAM V5.0 (30deg probe tilt); Type: QD 000 P40 CD; Serial: 1897

System Performance Check at Frequencies above 1 GHz/Pin=250mW /Area Scan (9x9x1):

Measurement grid: dx=12mm, dy=12mm

Maximum value of SAR (measured) = 24.2 W/kg

System Performance Check at Frequencies above 1 GHz/Pin=250mW /Zoom Scan (7x7x7)/Cube 0:

Measurement grid: dx=5mm, dy=5mm, dz=5mm

Reference Value = 113.7 V/m; Power Drift = -0.01 dB

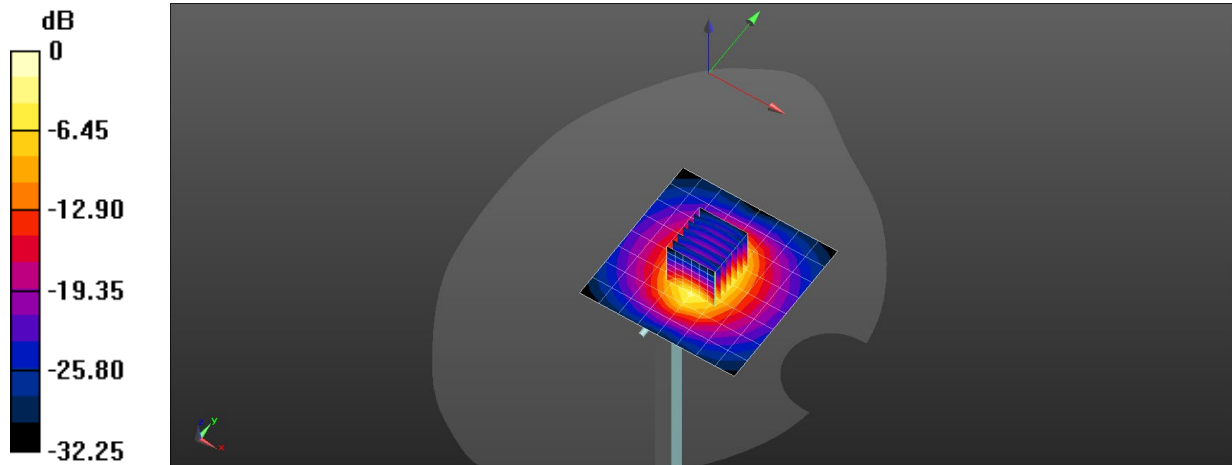
Peak SAR (extrapolated) = 30.3 W/kg

SAR(1 g) = 14.3 W/kg; SAR(10 g) = 6.54 W/kg

Smallest distance from peaks to all points 3 dB below = 9 mm

Ratio of SAR at M2 to SAR at M1 = 46.7%

Maximum value of SAR (measured) = 24.3 W/kg



0 dB = 24.2 W/kg = 13.84 dBW/kg

Test Laboratory: BTL

Date: 2022/10/24

System Check_H2600

Frequency: 2600 MHz; Duty Cycle: 1:1; Room Ambient Temperature: 23.0°C; Liquid Temperature: 22.0°C

Medium parameters used: $f = 2600$ MHz; $\sigma = 1.919$ S/m; $\epsilon_r = 38.858$; $\rho = 1000$ kg/m³

DASY5 Configuration:

- Area Scan Setting: Find Secondary Maximum Within: 2.0 dB and with a peak SAR value greater than 0.0012W/kg
- Electronics: DAE4 Sn1289; Calibrated: 2022/5/31
- Probe: EX3DV4 - SN7678; ConvF(8.11, 8.11, 8.11) @ 2600 MHz; Calibrated: 2022/8/30
- Sensor-Surface: 1.4mm (Mechanical Surface Detection)
- Phantom: Twin-SAM V5.0 (30deg probe tilt); Type: QD 000 P40 CD; Serial: 1897

System Performance Check at Frequencies above 1 GHz/Pin=250mW /Area Scan (9x9x1):

Measurement grid: dx=12mm, dy=12mm

Maximum value of SAR (measured) = 22.8 W/kg

System Performance Check at Frequencies above 1 GHz/Pin=250mW /Zoom Scan (7x7x7)/Cube 0:

Measurement grid: dx=5mm, dy=5mm, dz=5mm

Reference Value = 113.7 V/m; Power Drift = -0.01 dB

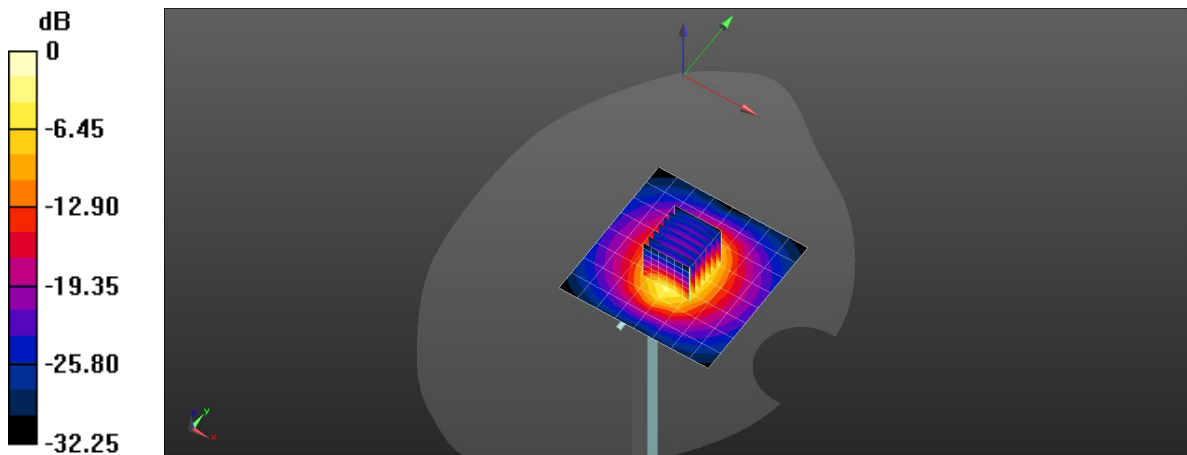
Peak SAR (extrapolated) = 28.6 W/kg

SAR(1 g) = 13.5 W/kg; SAR(10 g) = 6.17 W/kg

Smallest distance from peaks to all points 3 dB below = 9 mm

Ratio of SAR at M2 to SAR at M1 = 46.7%

Maximum value of SAR (measured) = 23.0 W/kg



0 dB = 22.8 W/kg = 13.58 dBW/kg

Test Laboratory: BTL

Date: 2022/10/20

System Check _H2600

Frequency: 2600 MHz; Duty Cycle: 1:1; Room Ambient Temperature: 23.0°C; Liquid Temperature: 22.0°C

Medium parameters used: $f = 2600$ MHz; $\sigma = 2.027$ S/m; $\epsilon_r = 37.75$; $\rho = 1000$ kg/m³

DASY5 Configuration:

- Area Scan Setting: Find Secondary Maximum Within: 2.0 dB and with a peak SAR value greater than 0.0012W/kg
- Electronics: DAE4 Sn1289; Calibrated: 2022/5/31
- Probe: EX3DV4 - SN7678; ConvF(8.11, 8.11, 8.11) @ 2600 MHz; Calibrated: 2022/8/30
- Sensor-Surface: 1.4mm (Mechanical Surface Detection)
- Phantom: Twin-SAM V5.0 (30deg probe tilt); Type: QD 000 P40 CD; Serial: 1897

System Performance Check at Frequencies above 1 GHz/Pin=250mW/Area Scan (9x9x1):

Measurement grid: dx=12mm, dy=12mm

Maximum value of SAR (measured) = 23.1 W/kg

System Performance Check at Frequencies above 1 GHz/Pin=250mW/Zoom Scan (7x7x7)/Cube 0:

Measurement grid: dx=5mm, dy=5mm, dz=5mm

Reference Value = 110.8 V/m; Power Drift = -0.02 dB

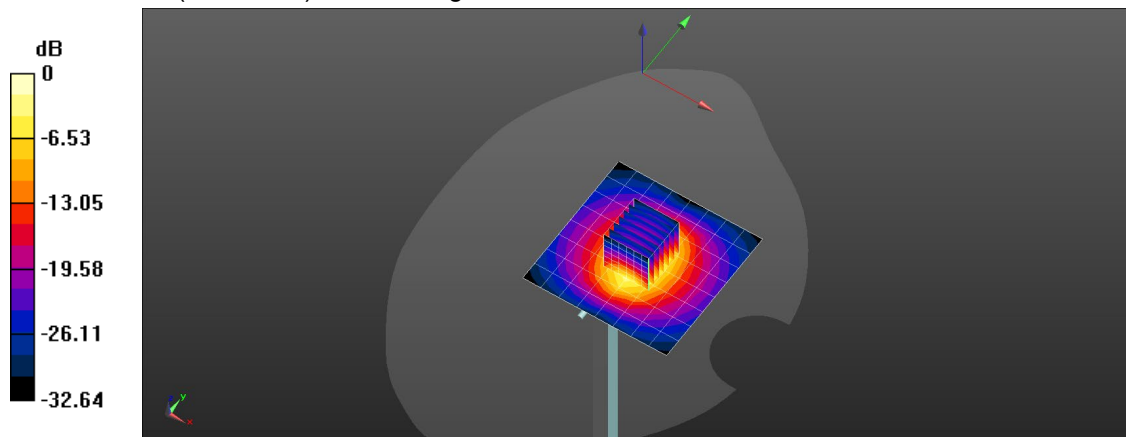
Peak SAR (extrapolated) = 28.7 W/kg

SAR(1 g) = 13.6 W/kg; SAR(10 g) = 6.22 W/kg

Smallest distance from peaks to all points 3 dB below = 9 mm

Ratio of SAR at M2 to SAR at M1 = 46.9%

Maximum value of SAR (measured) = 23.0 W/kg



0 dB = 23.1 W/kg = 13.63 dBW/kg

Test Laboratory: BTL

Date: 2022/10/21

System Check _H2600

Frequency: 2600 MHz; Duty Cycle: 1:1; Room Ambient Temperature: 23.0°C; Liquid Temperature: 22.0°C

Medium parameters used: $f = 2600$ MHz; $\sigma = 2.046$ S/m; $\epsilon_r = 37.56$; $\rho = 1000$ kg/m³

DASY5 Configuration:

- Area Scan Setting: Find Secondary Maximum Within: 2.0 dB and with a peak SAR value greater than 0.0012W/kg
- Electronics: DAE4 Sn1289; Calibrated: 2022/5/31
- Probe: EX3DV4 - SN7678; ConvF(8.11, 8.11, 8.11) @ 2600 MHz; Calibrated: 2022/8/30
- Sensor-Surface: 1.4mm (Mechanical Surface Detection)
- Phantom: Twin-SAM V5.0 (30deg probe tilt); Type: QD 000 P40 CD; Serial: 1897

System Performance Check at Frequencies above 1 GHz/Pin=250mW /Area Scan (9x9x1):

Measurement grid: dx=12mm, dy=12mm

Maximum value of SAR (measured) = 24.2 W/kg

System Performance Check at Frequencies above 1 GHz/Pin=250mW /Zoom Scan (7x7x7)/Cube 0:

Measurement grid: dx=5mm, dy=5mm, dz=5mm

Reference Value = 113.2 V/m; Power Drift = 0.01 dB

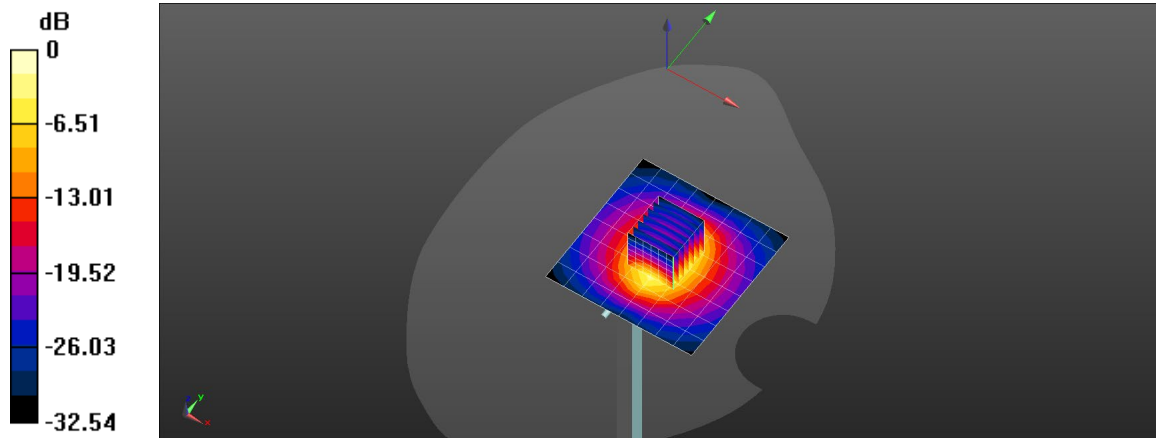
Peak SAR (extrapolated) = 30.1 W/kg

SAR(1 g) = 14.2 W/kg; SAR(10 g) = 6.47 W/kg

Smallest distance from peaks to all points 3 dB below = 9 mm

Ratio of SAR at M2 to SAR at M1 = 46.6%

Maximum value of SAR (measured) = 24.1 W/kg



0 dB = 24.2 W/kg = 13.84 dBW/kg