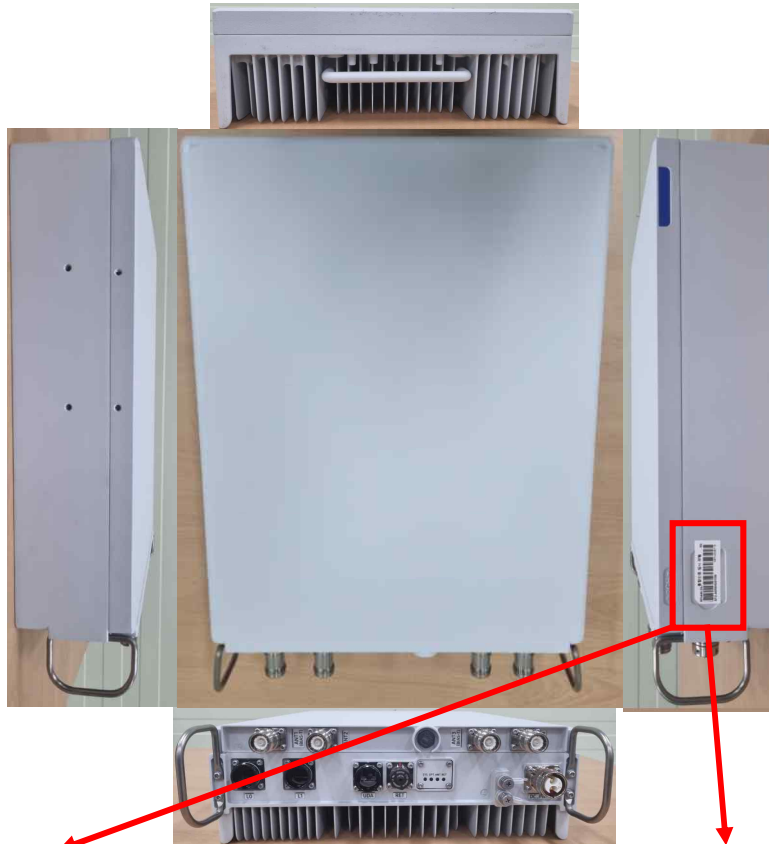


Label Location



<p>SAMSUNG</p> <p>Product : RRU (RF4486) Model : RF4486-25A</p> <p>Yen Phong 1 Industrial Zone, Yen Trung Commune, Yen Phong District, Bac Ninh Province, Vietnam MADE IN VIETNAM</p> <p>Rating : --- - 48 V ; 20.3A FCC ID : A3LRF4486-25A This device complies with Part 15 of the FCC Rules. Operation is subject to the following two conditions: (1) This device may not cause harmful interference, and (2) this device must accept any interference received, including interference that may cause undesired operation.</p> <p>IP65 RAINPROOF</p> <p>UL LISTED</p> <p>SEV E149091 I.T.E.</p>	<p>SAMSUNG</p> <p>Product : RRU (RF4486) Model : RF4486-25A</p> <p>129, Samsung-ro, Yeongtong-gu, Suwon-si, Gyeonggi-do, Korea MADE IN KOREA</p> <p>Rating : --- - 48 V ; 20.3A FCC ID : A3LRF4486-25A This device complies with Part 15 of the FCC Rules. Operation is subject to the following two conditions: (1) This device may not cause harmful interference, and (2) this device must accept any interference received, including interference that may cause undesired operation.</p> <p>IP65 RAINPROOF</p> <p>UL LISTED</p> <p>SUWON E149091 I.T.E.</p>
---	--

The FCC identifier Label will be displayed on the right side of the RRU(Remote Radio Unit) in accordance with the following figure, displaying FCC ID: A3LRF4486-25A. The adhesive label shall be permanently affixed at a conspicuous location on the device.