

Appendix B

Detailed Test Results

BT for Head

Test Laboratory: SGS-SAR Lab

A3957 Bluetooth DH5 39CH Front side 0mm

DUT: A3957

Communication System: UID 0, Bluetooth (0); Frequency: 2441 MHz; Duty Cycle: 1:1.731

Medium: HSL2450; Medium parameters used: $f = 2441$ MHz; $\sigma = 1.811$ S/m; $\epsilon_r = 38.658$; $\rho = 1000$ kg/m³

Phantom section: Flat Section

DASY 5 Configuration:

- Probe: EX3DV4 - SN3836; ConvF(7.35, 7.35, 7.35); Calibrated: 2024/9/19
- Sensor-Surface: 1.4mm (Mechanical Surface Detection)
- Electronics: DAE4 Sn760; Calibrated: 2024/8/15
- Phantom: SAM5; Type: SAM Twin; Serial: 1673
- DASY52 52.10.4(1527); SEMCAD X 14.6.14(7483)

Configuration/Body/Area Scan (7x8x1): Measurement grid: dx=12mm, dy=12mm

Maximum value of SAR (measured) = 0.476 W/kg

Configuration/Body/Zoom Scan (7x7x7)/Cube 0: Measurement grid: dx=5mm, dy=5mm, dz=5mm

Reference Value = 8.802 V/m; Power Drift = 0.07 dB

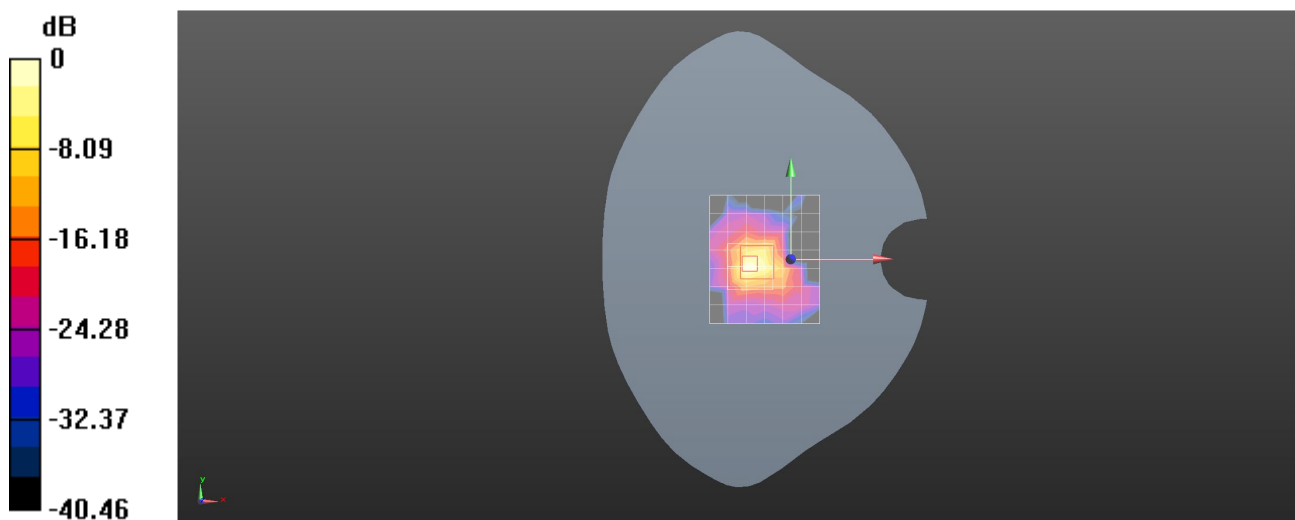
Peak SAR (extrapolated) = 1.13 W/kg

SAR(1 g) = 0.179 W/kg; SAR(10 g) = 0.059 W/kg

Smallest distance from peaks to all points 3 dB below = 6.2 mm

Ratio of SAR at M2 to SAR at M1 = 37.4%

Maximum value of SAR (measured) = 0.496 W/kg



0 dB = 0.496 W/kg = -3.05 dBW/kg

Test Laboratory: SGS-SAR Lab

A3957 Bluetooth DH5 78CH Front side 0mm

DUT: A3957

Communication System: UID 0, Bluetooth (0); Frequency: 2480 MHz; Duty Cycle: 1:1.731

Medium: HSL2450; Medium parameters used: $f = 2480$ MHz; $\sigma = 1.837$ S/m; $\epsilon_r = 38.574$; $\rho = 1000$ kg/m³

Phantom section: Flat Section

DASY 5 Configuration:

- Probe: EX3DV4 - SN3836; ConvF(7.35, 7.35, 7.35); Calibrated: 2024/9/19
- Sensor-Surface: 1.4mm (Mechanical Surface Detection)
- Electronics: DAE4 Sn760; Calibrated: 2024/8/15
- Phantom: SAM5; Type: SAM Twin; Serial: 1673
- DASY52 52.10.4(1527); SEMCAD X 14.6.14(7483)

Configuration/Body/Area Scan (6x8x1): Measurement grid: dx=12mm, dy=12mm

Maximum value of SAR (measured) = 0.289 W/kg

Configuration/Body/Zoom Scan (7x7x7)/Cube 0: Measurement grid: dx=5mm, dy=5mm, dz=5mm

Reference Value = 5.916 V/m; Power Drift = 0.08 dB

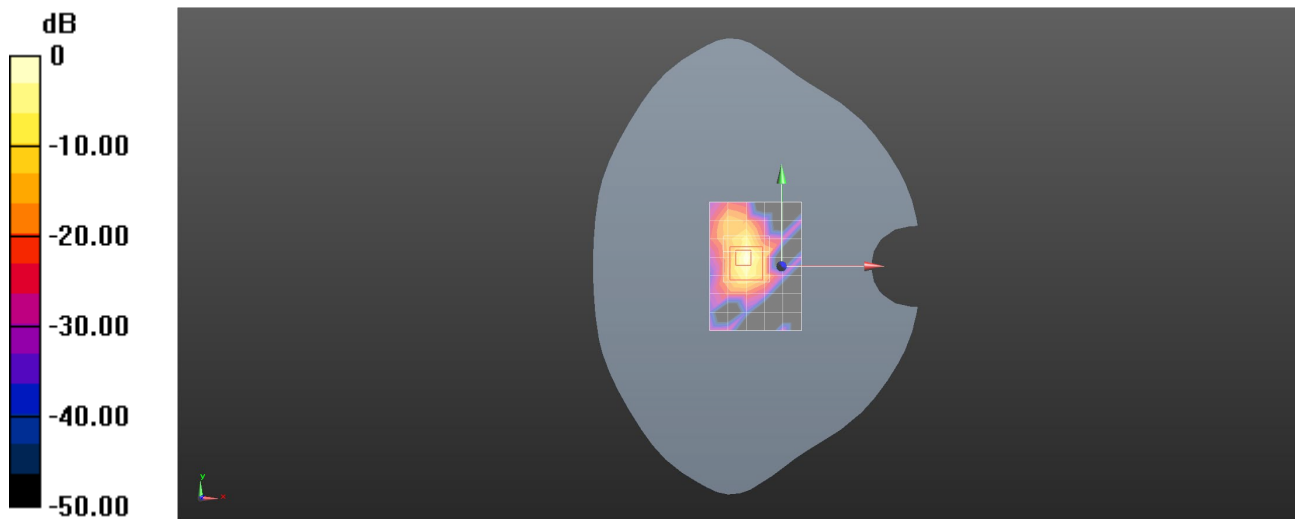
Peak SAR (extrapolated) = 0.738 W/kg

SAR(1 g) = 0.114 W/kg; SAR(10 g) = 0.035 W/kg

Smallest distance from peaks to all points 3 dB below = 7.2 mm

Ratio of SAR at M2 to SAR at M1 = 36.7%

Maximum value of SAR (measured) = 0.350 W/kg



0 dB = 0.350 W/kg = -4.56 dBW/kg