



IO65XP

Product Manual

Welcome

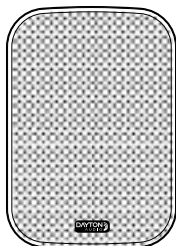
Thank you for choosing the Dayton Audio IO65XP Outdoor Bluetooth Speakers. Designed with durability and performance in mind, these speakers deliver rich, immersive sound to elevate your outdoor spaces. Whether you're enjoying your favorite music, streaming movies, or setting the mood for a gathering, the IO65XP ensures every note is clear and vibrant.

Built for the elements, the IP66-rated enclosures provide outstanding weatherproof protection, making them perfect for year-round use. With a built-in amplifier and hassle-free Bluetooth connectivity, setting up is as easy as plugging in, pairing, and pressing play.

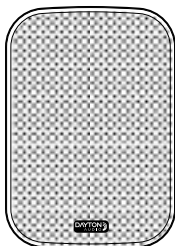
Contents

Welcome	1
Contents	1
What's In The Box	2
Unpacking	2
Panels and Controls	3
Installation	4
Hooking Up	5
Connecting Speakers	5
Connecting To Power	5
Connecting to Bluetooth	6
Care and Maintenance	6
Troubleshooting	7
Specifications	8

What's In The Box



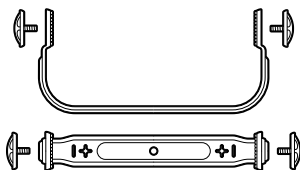
Active (powered)
Speaker



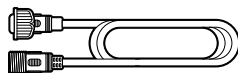
Passive (unpowered)
Speaker



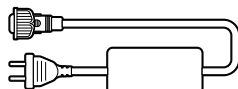
This Manual



Mounting Brackets
and Hardware



25' Speaker Cable



Power Cable

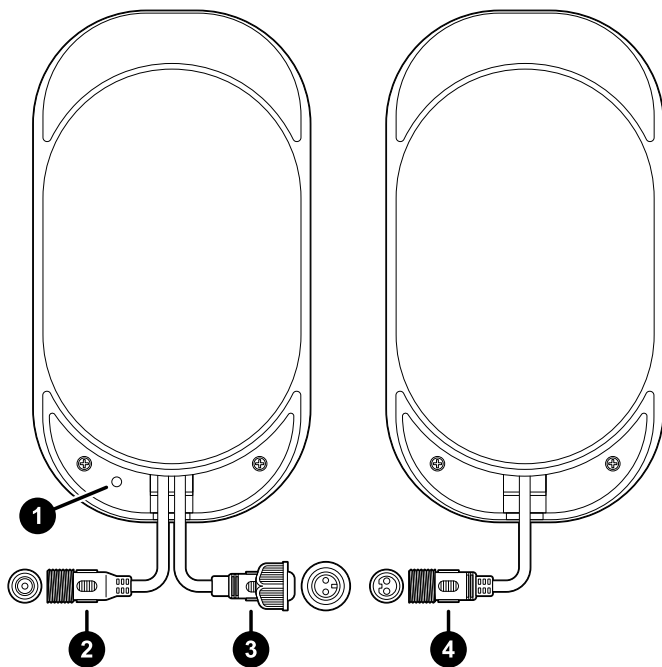
Unpacking

Please unpack the speakers and carefully examine them for any potential damage that may have occurred during shipping. If damage is discovered, it is important to inform the shipping company promptly.

While Dayton Audio is available and willing to assist as necessary, only the recipient can initiate a claim for any shipping-related damage. If the product shows visible signs of damage upon arrival, be sure to retain the shipping carton for the shipper's inspection.

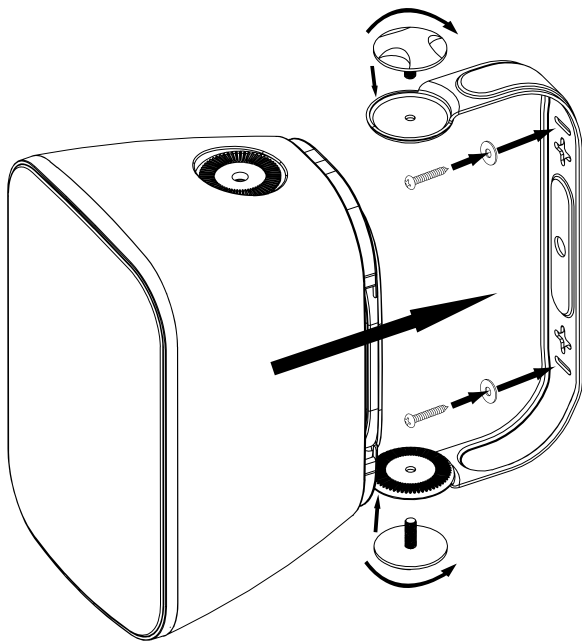
It is strongly advised to keep all packing materials, as they may be useful in the future event the speakers need to be transported or stored. Never attempt to ship the speakers without the original factory carton and the accompanying packing materials.

Panels and Controls



1. Bluetooth Pair Button
2. DC Power Input
3. Speaker Output
4. Speaker Input

Installation



- The patio speakers are best installed in a location that is not directly exposed to the elements
- Place the powered speaker close to an AC outlet for easier connectivity
- Use appropriate hardware for securing the wall mount bracket to any wall or surface
- Install the bracket before installing the speaker onto the bracket



1. Read these instructions.
2. Follow these instructions.
3. Comply with all warnings.
4. Follow all instructions.
5. Do not use this device near water.
6. Use only a dry cloth for cleaning.
7. Do not block the ventilation holes.
8. Install according to the manufacturer's instructions.
9. Do not install it near heat sources such as radiators, sockets, stoves, or other devices that generate heat (including amplifiers).
10. Do not bypass the safety device of the polarized plug. The polarized plug has two blades, one not wider than the other. Providing large blades is for our safety. If the provided plug is not suitable for your socket, please consult an electrician to replace the outdated socket.
11. Protect the power cord, especially the plug, socket, and point of removal from the device, to prevent stepping on or pinching the power cord.
12. Use only accessories specified by the manufacturer.
13. Remove this device during thunderstorms or prolonged periods of inactivity.
14. Repairs and maintenance shall be carried out by qualified service personnel. When the device is damaged by any of the following types, it must be repaired: power cord or plug damage, liquid overflow or falling into the device, device exposure to rain/water or moisture, malfunction or falling.
15. Bare fire sources, such as illuminated candles, should not be placed on the device.
16. Warning: To reduce the risk of fire or electric shock, do not expose this device to rain or moisture. The device shall not be exposed to dripping or splashing, and objects filled with liquid, such as vases, shall not be placed on the device.
17. Warning: The main plug/device coupler is used as a disconnecting device, and the disconnecting device should be kept operable at any time.
18. Properly handle this product. This mark indicates that the product should not be disposed of together with other household waste across the European Union. In order to prevent potential harm to the environment or human health caused by uncontrolled waste disposal, responsible recycling of waste should be carried out to promote the sustainable reuse of material resources. To return the product, please use the return and payment system or contact the retailer who purchased the product. They can use this product for environmentally safe recycling.
19. The equipment should be used at a maximum ambient temperature of 40 degrees Celsius.
20. The product must be used on an open workbench.



FCC Statement

This device complies with Part 15 of the FCC Rules. Operation is subject to the following two conditions:

- (a) This device may not cause harmful interference. (b) This device must accept any interference received, including interference that may cause undesired operation.

NOTE 1: This equipment has been tested and found to comply with the limits for a Class B digital device, pursuant to part 15 of the FCC Rules. These limits are designed to provide reasonable protection against harmful interference in a residential installation. This equipment generates uses and can radiate radio frequency energy and, if not installed and used in accordance with the instructions, may cause harmful interference to radio communications. However, there is no guarantee that interference will not occur in a particular installation. If this equipment does cause harmful interference to radio or television reception, which can be determined by turning the equipment off and on, the user is encouraged to try to correct the interference by one or more of the following measures:

- Reorient or relocate the receiving antenna.
- Increase the separation between the equipment and receiver.
- Connect the equipment into an outlet on a circuit different from that to which the receiver is connected.
- Consult the dealer or an experienced radio/TV technician for help.

NOTE 2: Changes or modifications not expressly approved by the party responsible for compliance could void the user's authority to operate the equipment.

5-Year Limited Warranty

See daytonaudio.com for details



daytonaudio.com
tel + 937.743.8248
info@daytonaudio.com

705 Pleasant Valley Dr.
Springboro, OH 45066
USA

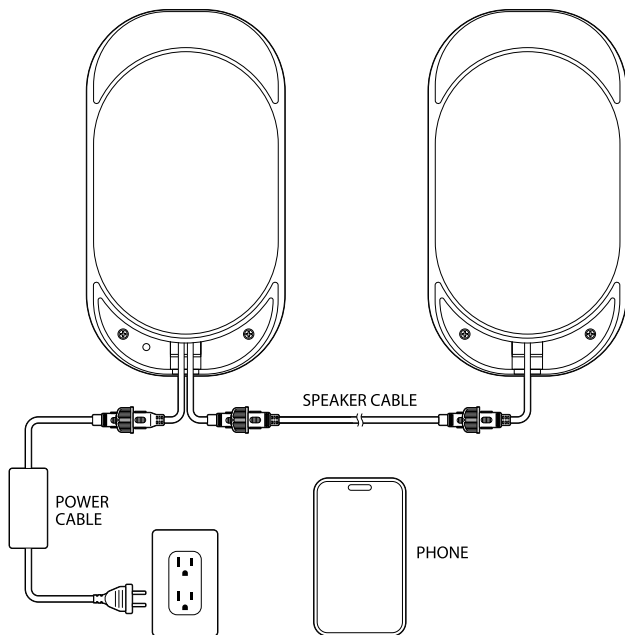


Dayton Audio®

Last Revised: 12/5/2024



Hooking Up



Connecting Speakers

Using the supplied speaker wire, connect the output of the powered speaker to the input of the passive speaker. Ensure the connectors are screwed down tightly to form a water-resistant seal.

Connecting To Power

Connect the included waterproof power supply to the DC input on the rear of the powered speaker and to mains power.



Connecting to Bluetooth


1. The speakers will automatically enter pairing mode when powered on. If available, the speakers will connect to the last known device.
2. Using a smartphone, tablet, computer, or other device capable of transmitting Bluetooth audio, go to the device's settings and scan for available Bluetooth devices.
3. Look for and select "DA IO65XP" in the device list and begin pairing. The Bluetooth source light on the rear of the speaker will flash until a device is paired.
4. Once the Bluetooth source light stops flashing and the device indicates that it is connected, begin streaming your favorite music from up to 30 feet away.


Disconnecting from Bluetooth

To unpair or disconnect from Bluetooth press and hold the "pair" button on the rear of the powered speaker or disconnect from the Bluetooth device itself. The IO65XP will be findable for 25 seconds. To reestablish Bluetooth pairing mode, simply press the 'pair' button on the rear of the powered speaker or power cycle the system altogether.

Care and Maintenance

Outdoor speakers are designed to withstand outdoor environments, including incidental water exposure. Dirt and debris can be cleaned off with a garden hose sprayer, and excessive buildup can be removed with a damp sponge or cloth.

 Avoid using pressure washing machines on the speakers. Improper use could damage the tweeter and woofer on the front of the speaker.

 Avoid leaving the speakers plugged in for long periods of time when not in use.



Specifications

Frequency Response	45 - 20,000 Hz
Power Output	100W max (80W RMS)
Transducers	
Woofer	6-1/2" Polypropylene Cone with Rubber Surround
Tweeter	1" Soft Dome
System Format	2-Way
Bluetooth	Version 5.3
General	
Power Requirement	24 VDC / 4.5A
Power Supply (External)	100-240 VAC / 50-60 Hz
Amplification	Class D
Dimensions (each) W x H x D	7-3/4 x 11-1/4 x 7-7/8 in. (197 x 285 x 200 mm)
Net Weight (Active)	6.88 lbs. (3.12 kg.)
Net Weight (Passive)	6.75 lbs. (3.06 kg.)
Ingress Protection Rating	
Speakers	IP66
Power Supply	IP67
Finishes Available	Black White

All specifications are accurate at the time of printing.
Dayton Audio reserves the right to make improvements without notice.

Troubleshooting

Problem	Cause	Solution
The speakers fail to turn on	The power cable is not properly connected	Check to make sure both ends of the power cable are connected properly.
	Power outlet not working	Verify that the power outlet being used is supplying power by checking any switches, GFCI or circuit breakers.
Low or no sound	The volume is turned down or muted	Turn the volume up to disable mute.
Unable to connect to Bluetooth	Another device is already connected	Disconnect other devices by pressing and holding the pair button on the rear of the speaker. (p.6)
	Speakers are too far away	Move closer to the speakers.
	Speakers not in pairing mode	Press the pairing button on the back of the speaker. (p.6)
Distorted or Intermittent sound	Poor Bluetooth connection	Move closer to the speakers, or remove any obstruction to the speakers. Bluetooth signals can become very weak when traveling through exterior walls.
	Potential damage to the speaker	Please contact Dayton Audio customer support for additional assistance.